



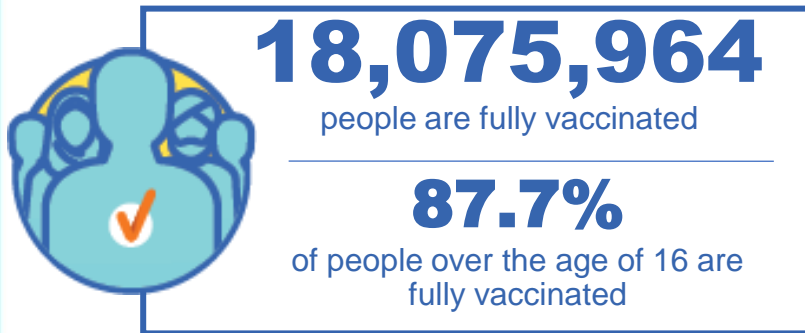
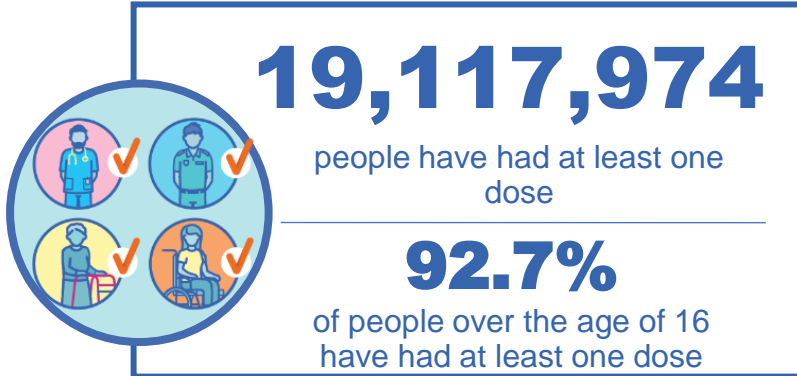
Australian Government
Operation COVID Shield

COVID-19 Vaccine Roll-out

03 December 2021

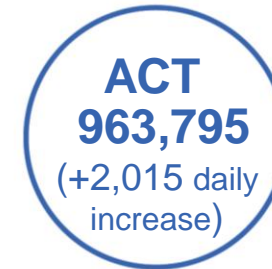
Data as at:
02 Dec 2021

Total vaccine doses



39,485,933 total vaccine doses administered nationally as at 02 December

+99,084 recorded in the last 24 hours



*Administration state breakdown indicates state in which a vaccine was administered

**Overall dose count includes instances of more than two doses per person in a small number of cases.

Data as at:
02 Dec 2021

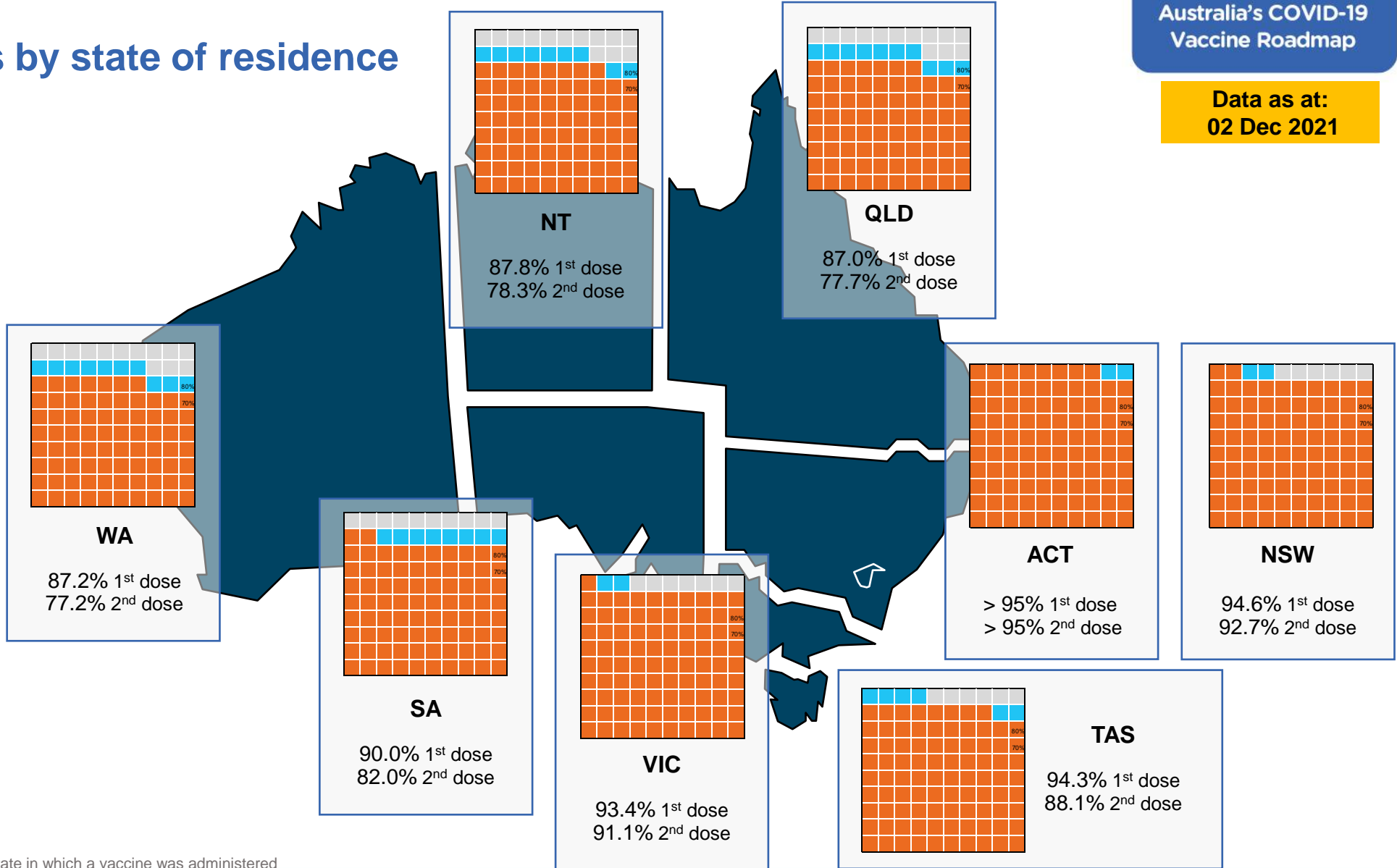
Vaccinations by state of residence

First doses

Age	Today	4 weeks ago	8 weeks ago
16+	92.7%	89.3%	82.2%
50+	>95%	>95%	92.1%
70+	>95%	>95%	>95%

Fully vaccinated

Age	Today	4 weeks ago	8 weeks ago
16+	87.7%	80.1%	61.3%
50+	94.2%	88.4%	76.4%
70+	>95%	92.9%	83.3%



*Residential state may differ from the state in which a vaccine was administered

Commonwealth and Jurisdiction vaccine doses administered

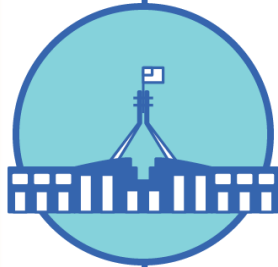
Data as at:
02 Dec 2021



39,485,933 total vaccine doses administered nationally as at 02 December
+ **99,084** recorded in the last 24 hours



15,999,505 doses administered by state and territory facilities
+ **30,101** recorded in the last 24 hours



23,486,428 doses administered by commonwealth facilities
+ **68,983** recorded in the last 24 hours
22,359,605 total vaccine doses administered in primary care settings
1,126,823 total vaccine doses administered in aged care and disability settings

NSW	Jurisdictions	Commonwealth
Cumulative	4,219,732	8,757,467
Daily increase	2,527	12,186

VIC	Jurisdictions	Commonwealth
Cumulative	4,769,587	5,955,697
Daily increase	3,838	11,527

QLD	Jurisdictions	Commonwealth
Cumulative	2,931,680	4,357,878
Daily increase	11,222	24,398

WA	Jurisdictions	Commonwealth
Cumulative	1,675,841	2,006,488
Daily increase	5,048	11,228

TAS	Jurisdictions	Commonwealth
Cumulative	462,305	391,128
Daily increase	1,288	1,885

SA	Jurisdictions	Commonwealth
Cumulative	1,225,215	1,382,651
Daily increase	3,940	6,258

ACT	Jurisdictions	Commonwealth
Cumulative	487,107	476,688
Daily increase	1,426	589

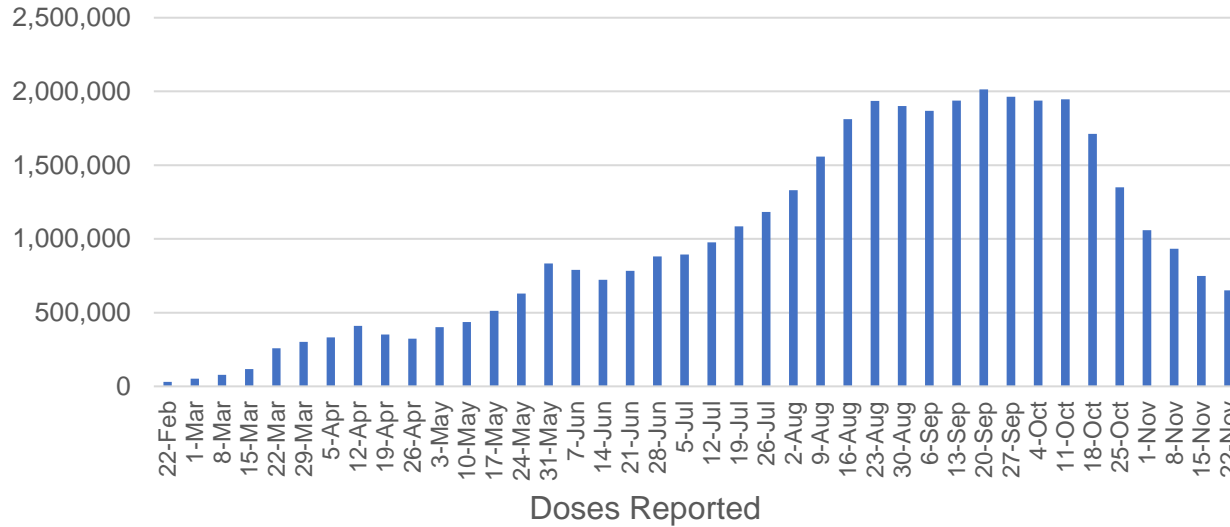
NT	Jurisdictions	Commonwealth
Cumulative	228,038	158,431
Daily increase	812	912

Vaccine milestone charts

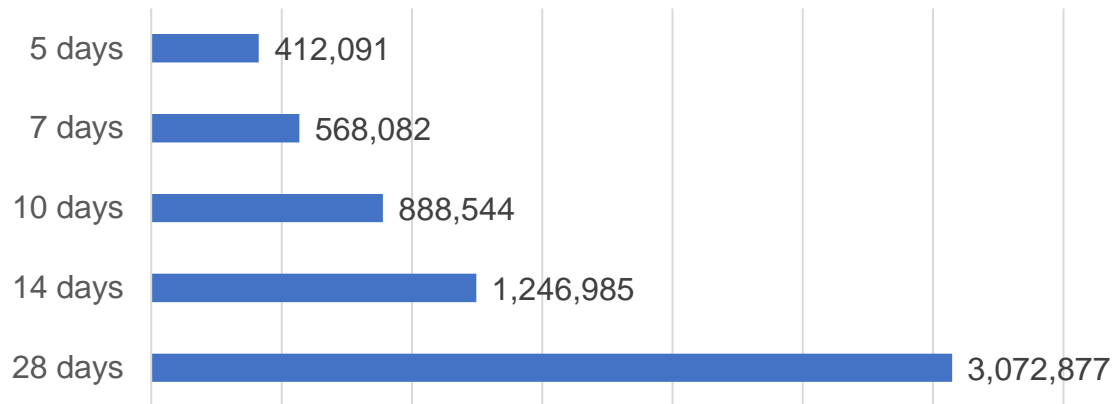
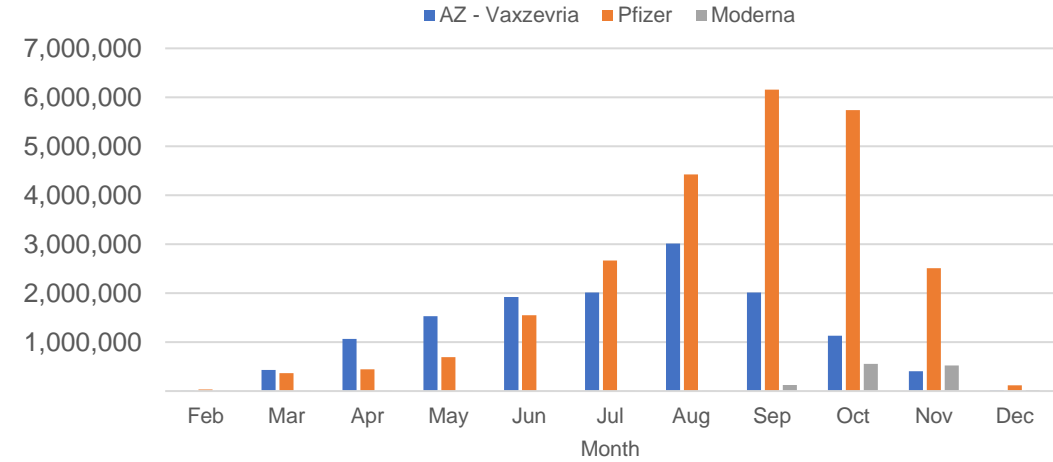
Data as at:
02 Dec 2021

Australia's COVID-19
Vaccine Roadmap

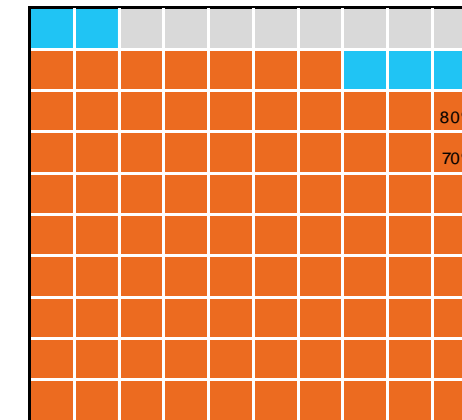
Doses Administered by Week



Doses by administration month and vaccine type



Eligible population percentage coverage



1st dose: 92.7% 2nd dose: 87.7%

*Each square represents 1% of the national population. Squares are filled as milestones are achieved.

*Sourced from the Australian Immunisation Register.

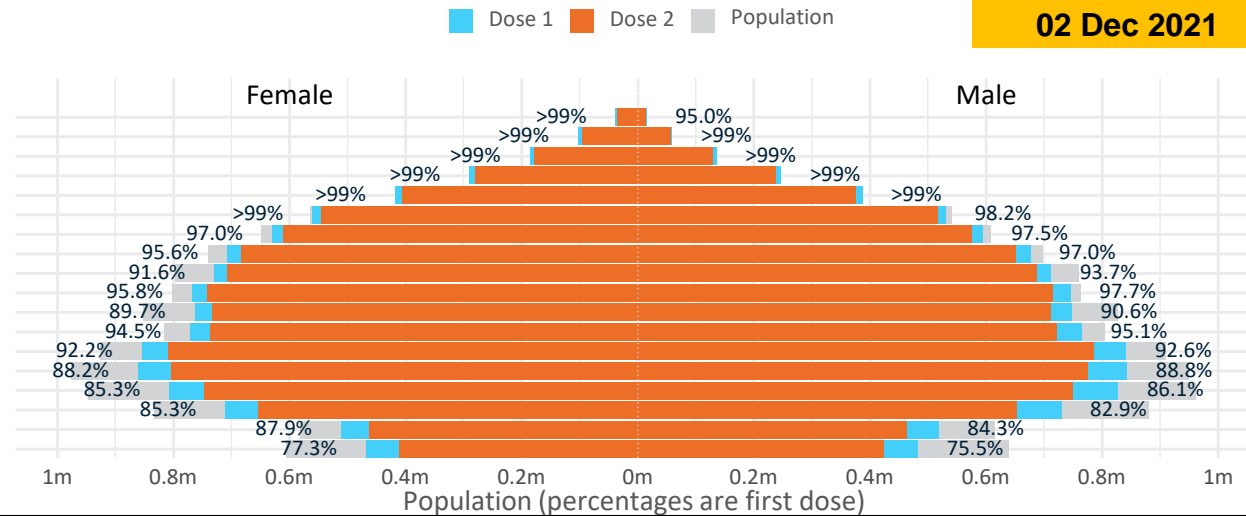
Data as at:
02 Dec 2021

Doses by age and sex

First and second doses by age and sex

	16+	50+	70+	12-15
Dose 1	92.72% (19,117,974 doses / 20,619,959 people)	97.56% (8,536,084 doses / 8,749,703 people)	>99% (2,970,162 doses / 2,934,706 people)	76.43% (950,738 doses / 1,243,990 people)
Dose 2	87.66% (18,075,964 doses / 20,619,959 people)	94.25% (8,246,200 doses / 8,749,703 people)	97.84% (2,871,281 doses / 2,934,706 people)	67.09% (834,637 doses / 1,243,990 people)

Age	Dose 1	Dose 2
95+	52,743 (>99%)	48,305 (91.3%)
90-94	162,002 (>99%)	152,409 (96.2%)
85-89	321,677 (>99%)	307,114 (97.1%)
80-84	536,931 (>99%)	518,703 (98.2%)
75-79	805,027 (>99%)	782,699 (>99%)
70-74	1,091,782 (98.8%)	1,062,051 (96.1%)
65-69	1,224,995 (97.4%)	1,186,878 (94.3%)
60-64	1,384,182 (96.3%)	1,335,008 (92.9%)
55-59	1,442,264 (92.7%)	1,395,730 (89.7%)
50-54	1,514,481 (96.8%)	1,457,303 (93.1%)
45-49	1,512,523 (90.2%)	1,446,443 (86.3%)
40-44	1,537,860 (94.9%)	1,459,815 (90.1%)
35-39	1,700,043 (92.6%)	1,596,380 (87.0%)
30-34	1,711,083 (88.9%)	1,585,213 (82.4%)
25-29	1,644,572 (86.3%)	1,504,032 (78.9%)
20-24	1,446,075 (84.5%)	1,310,755 (76.5%)
16-19	1,029,734 (86.1%)	927,126 (77.5%)
12-15	950,738 (76.4%)	834,637 (67.1%)

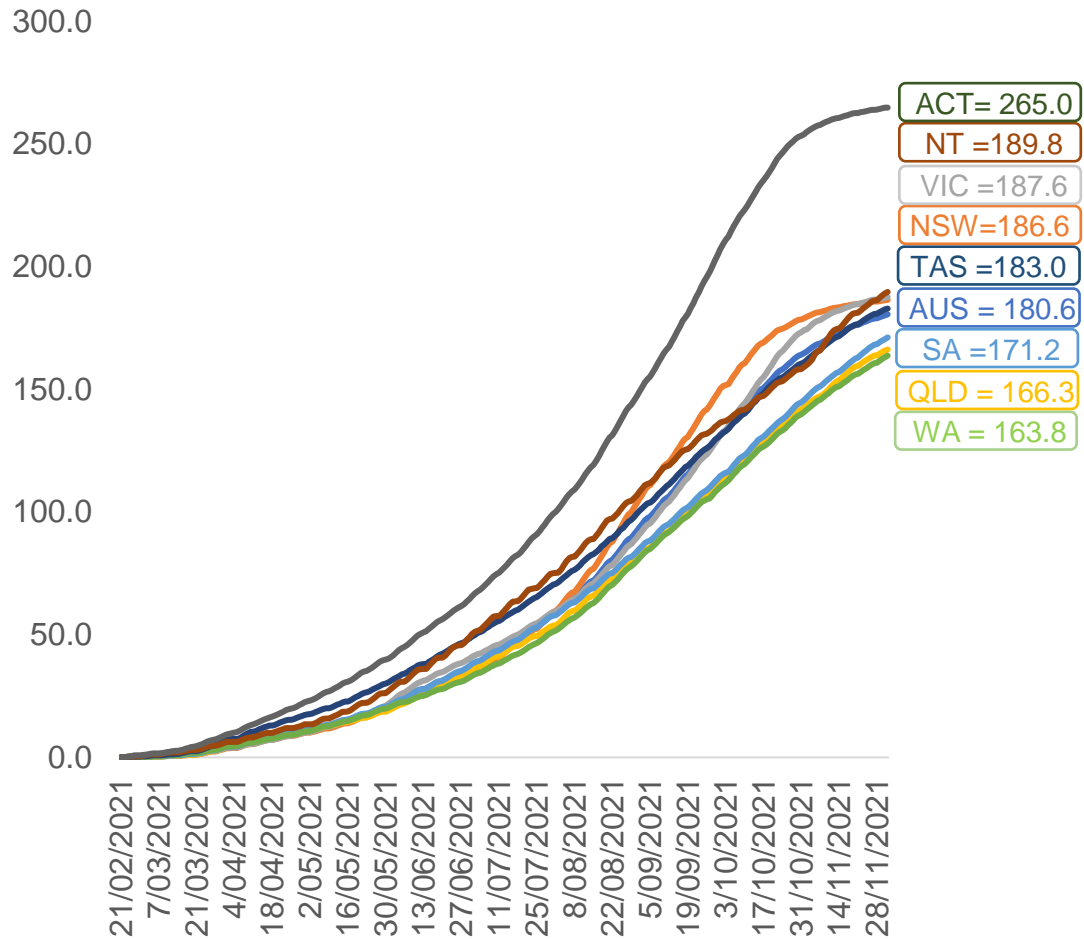


	AUS	ACT	NSW	NT	QLD	SA	TAS	VIC	WA
16 and over - dose 1	19,117,974	345,758	6,211,901	167,227	3,579,324	1,296,027	415,199	5,050,613	1,844,088
16 and over - dose 2	18,075,964	339,100	6,087,267	149,267	3,195,634	1,180,782	387,697	4,925,408	1,633,032
16 and over - population	20,619,959*	344,037	6,565,651	190,571	4,112,707	1,440,400	440,172	5,407,574	2,114,978
16 and over % with dose 1	92.72%	>99%	94.61%	87.75%	87.03%	89.98%	94.33%	93.40%	87.19%
16 and over % with dose 2	87.66%	98.56%	92.71%	78.33%	77.70%	81.98%	88.08%	91.08%	77.21%
50 and over - dose 1	8,536,084	133,795	2,769,030	56,072	1,656,806	644,131	212,340	2,170,903	835,450
50 and over - dose 2	8,246,200	131,761	2,726,422	52,573	1,566,552	608,027	202,526	2,126,405	781,201
50 and over - population	8,749,703	127,802	2,807,793	62,280	1,758,855	674,384	220,036	2,211,211	885,370
50 and over % with dose 1	97.56%	>99%	98.62%	90.03%	94.20%	95.51%	96.50%	98.18%	94.36%
50 and over % with dose 2	94.25%	>99%	97.10%	84.41%	89.07%	90.16%	92.04%	96.16%	88.23%
70 and over - dose 1	2,970,162	43,636	978,454	11,483	570,792	240,871	77,981	748,662	276,403
70 and over - dose 2	2,871,281	42,788	959,742	10,833	545,262	228,171	74,154	729,989	261,067
70 and over - population	2,934,706	39,946	962,606	12,343	577,767	240,514	77,155	743,519	280,281
70 and over % with dose 1	>99%	>99%	>99%	93.03%	98.79%	>99%	>99%	>99%	98.62%
70 and over % with dose 2	97.84%	>99%	>99%	87.77%	94.37%	94.87%	96.11%	98.18%	93.14%
12 to 15 - dose 1	950,738	19,704	317,562	9,535	174,960	57,277	19,400	268,403	76,423
12 to 15 - dose 2	834,637	18,891	300,688	7,340	139,168	43,957	16,139	245,553	57,233
12 to 15 - population	1,243,990	19,693	390,330	13,060	270,146	82,747	26,308	308,611	132,869
12 to 15 % with dose 1	76.43%	>99%	81.36%	73.01%	64.76%	69.22%	73.74%	86.97%	57.52%
12 to 15 % with dose 2	67.09%	95.93%	77.03%	56.20%	51.52%	53.12%	61.35%	79.57%	43.07%

*National population will not equal sum of listed jurisdictions due to a small number of people counted in national population residing in some 'other' territories. Sum of state doses will not add to national total as some records are unable to be geocoded to a State or Territory.
Doses sourced from Australian Immunisation Register, population from ABS ERP June 2020

Vaccinations by location

Cumulative total doses administered vs eligible state populations*

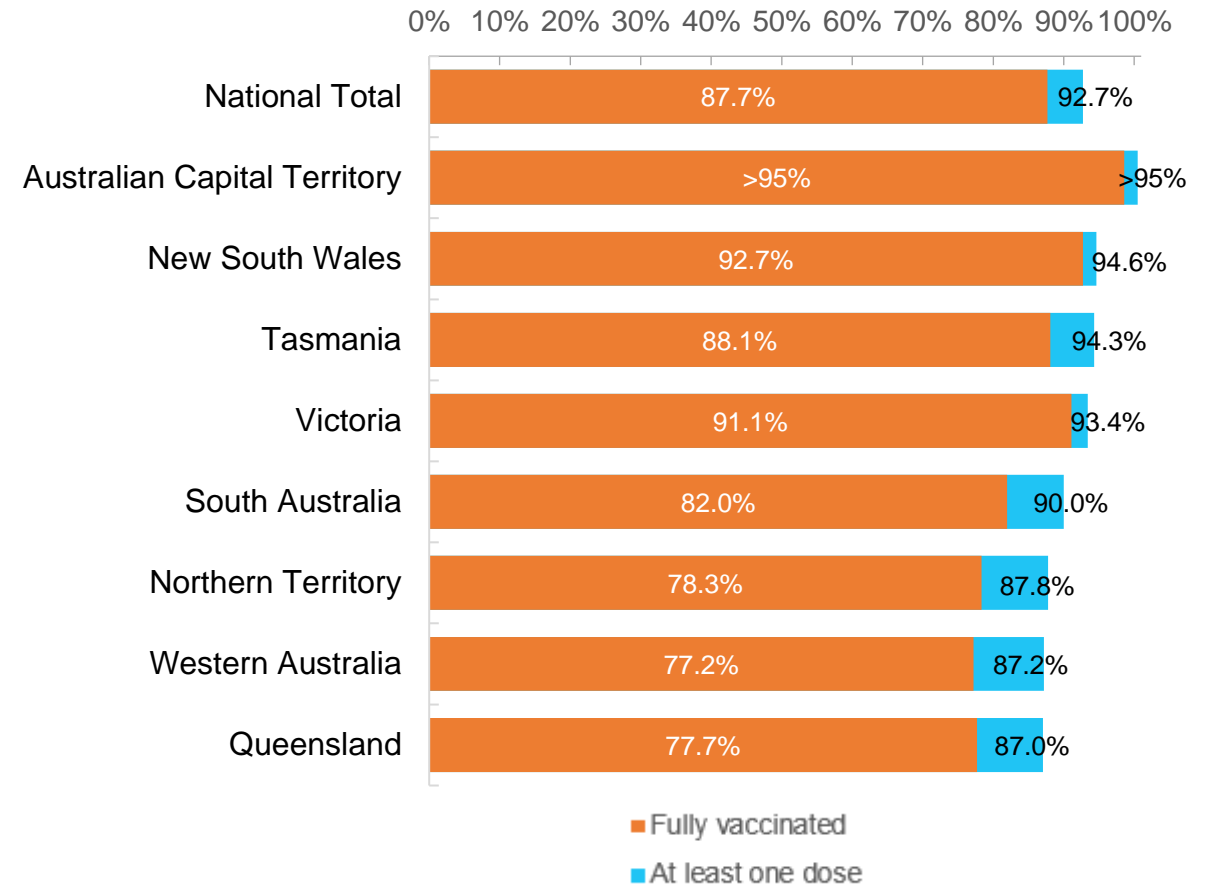


*Not an indication of percentage vaccinated, numbers will exceed 100 due to multiple doses required per person of the population. All doses are included, including those for the 12-15 cohort, and are based on vaccination provider location.

Data as at:
02 Dec 2021

Australia's COVID-19
Vaccine Roadmap

First and Second Doses by state of residence



Aboriginal and Torres Strait Islander peoples

Number of people vaccinated

**Data as at:
30 Nov 2021
Updated weekly**

**Australia's COVID-19
Vaccine Roadmap**



391,929

people over the age of 16
have had at least one dose

73.9%

of people over the age of 16
have had at least one dose



331,966

people over the age of 16
are fully vaccinated

62.4%

of people over the age of 16 are
fully vaccinated



**39,188
(54.7%)**

people aged 12-15 years
have had at least one dose

173 Aboriginal community controlled health services (ACCHS)

0#	50	27	41	12	3	21	19
ACT	NSW	NT	QLD	SA	TAS	VIC	WA

Medicare Address State ^{##}	Individuals Dose 1	Individuals Dose 1 %	Individuals Dose 2	Individuals Dose 2 %
Australian Capital Territory	4,913	90.0%	4,691	85.8%
New South Wales	136,813	85.3%	130,695	81.4%
Northern Territory	36,749	79.8%	28,194	60.9%
Queensland	96,092	66.7%	73,689	51.0%
South Australia	17,403	67.8%	13,804	53.5%
Tasmania	13,704	79.4%	12,364	71.4%
Victoria	35,451	87.5%	33,389	82.3%
Western Australia	36,959	57.5%	25,432	39.4%
Unknown/Other Territories	13,845	51.3%	9,708	35.8%
Totals	391,929	73.9%	331,966	62.4%

Source: Australian Immunisation Register

*Identifying as Aboriginal and Torres Strait Islander is optional and the estimated population may be under reported.

**Includes all Aboriginal and Torres Strait Islander peoples who have received a vaccination, not limited to those administered in an ACCHS setting

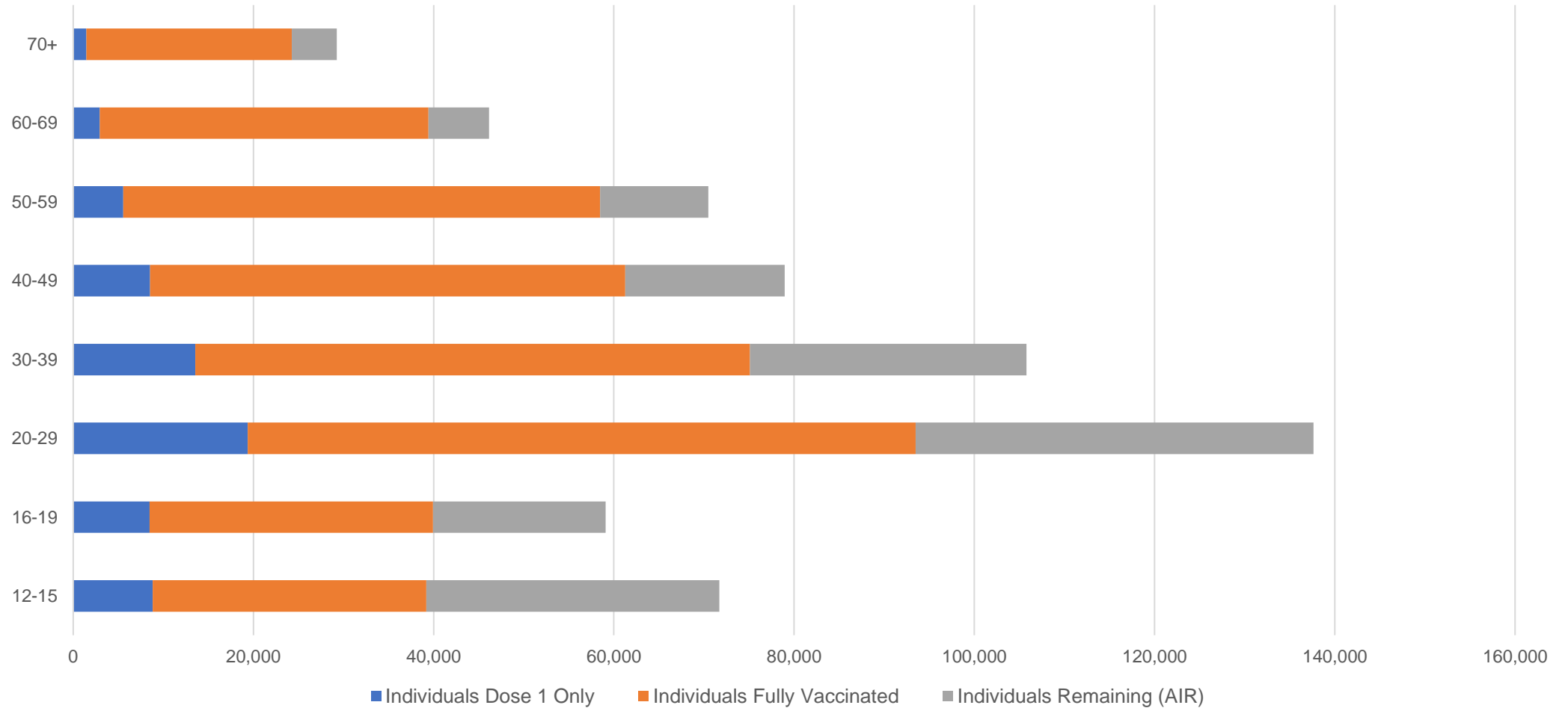
#ACCHS in the ACT are currently operating as a Commonwealth Vaccine Clinics so not included to avoid double counting

##The above table includes all identified Aboriginal and Torres Strait Islander people who are aged 16 and above by their state of residence.

Aboriginal and Torres Strait Islander peoples Number of people vaccinated by age

Data as at:
30 Nov 2021
Updated weekly

Australia's COVID-19
Vaccine Roadmap



Source: Australian Immunisation Register

Data as at:
02 Dec 2021

Commonwealth primary care



Primary care vaccine administration sites

5,643	137	172	3,453
GPs	CVCs	ACCHS	Pharmacies



22,359,605 total vaccine doses administered
primary care settings as at 02 December
+ 62,905 recorded in the last 24 hours

Primary care vaccinations by provider type

	Doses administered	Daily increase	7 day increase
General Practice* includes other Commonwealth	19,966,462	45,090	252,668
Pharmacy	2,393,143	17,815	112,798



161,603 doses administered to persons residing in other territories or with missing residential information

*General practice includes Commonwealth Vaccination Clinics, Aboriginal Community Health Centres, Royal Flying Doctor Service and other Commonwealth vaccination facilities

Source: Australian Immunisation Register

Data as at:
02 Dec 2021

Commonwealth aged care and disability doses administered



1,126,823 (+ 6,078 last 24 hours)

Total vaccine doses administered in aged care and disability facilities as at 02 December

Number of doses administered as part of the Commonwealth aged and disability care rollout

NSW
524,320
(+1,529 daily increase)

VIC
209,488
(+1,374 daily increase)

QLD
173,155
(+1,798 daily increase)

WA
79,649
(+157 daily increase)

TAS
19,656
(+171 daily increase)

SA
72,338
(+641 daily increase)

ACT
14,615
(+110 daily increase)

NT
6,324
(+31 daily increase)

27,278

doses administered to persons residing in other territories or with missing residential information

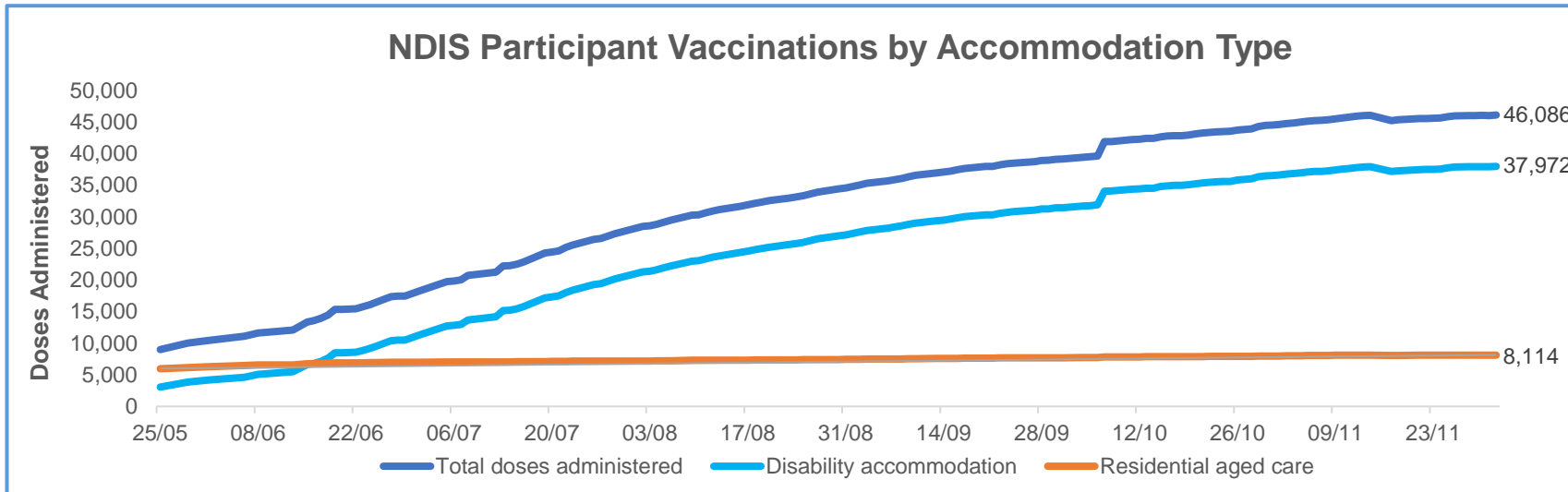
*Sourced from the Australian Immunisation Register. Includes all persons vaccinated at participating residential aged care, disability and related industry settings.
**State level breakdown indicates the residential location and may not align to the state in which the vaccination occurred.

Source: Australian Immunisation Register

Data as at:
02 Dec 2021*

Vaccination rate of people with disability and the disability workforce

Phase 1a – People with disability living in shared accommodation



	Total people with at least one dose	People fully vaccinated	Total number of individuals in cohort	Total doses administered	% People with at least one dose	% People fully vaccinated
NDIS participants living in shared accommodation **	23,542	22,544	27,603	46,086	85.3%	81.7%
NDIS screened workers ***	220,892	209,953	251,862	430,845	87.7%	83.4%



* Updates are available Monday to Friday on participants, and bi-weekly for workers, numbers may be up to four days old.

** Shared accommodation means two or more people with disability living in shared residential accommodation and NDIS participants living in Residential Aged Care accommodation as per the eligibility criteria of Phase 1a. The number of residents changes over time and refinement of methodology can lead to corrections in totals.

*** Total number of workers within the NDIS Commission Worker Screening database who have ever been successfully screened and linked to an NDIS registered provider or participant.

Source: Linkage between National Disability Insurance Agency data, NDIS Quality and Safeguards Commission data and the Australian Immunisation Register.

Residential aged care vaccination rollout

Residential aged care facilities status

100%

Commonwealth facilities visited (2,565 planned sites)

162,211

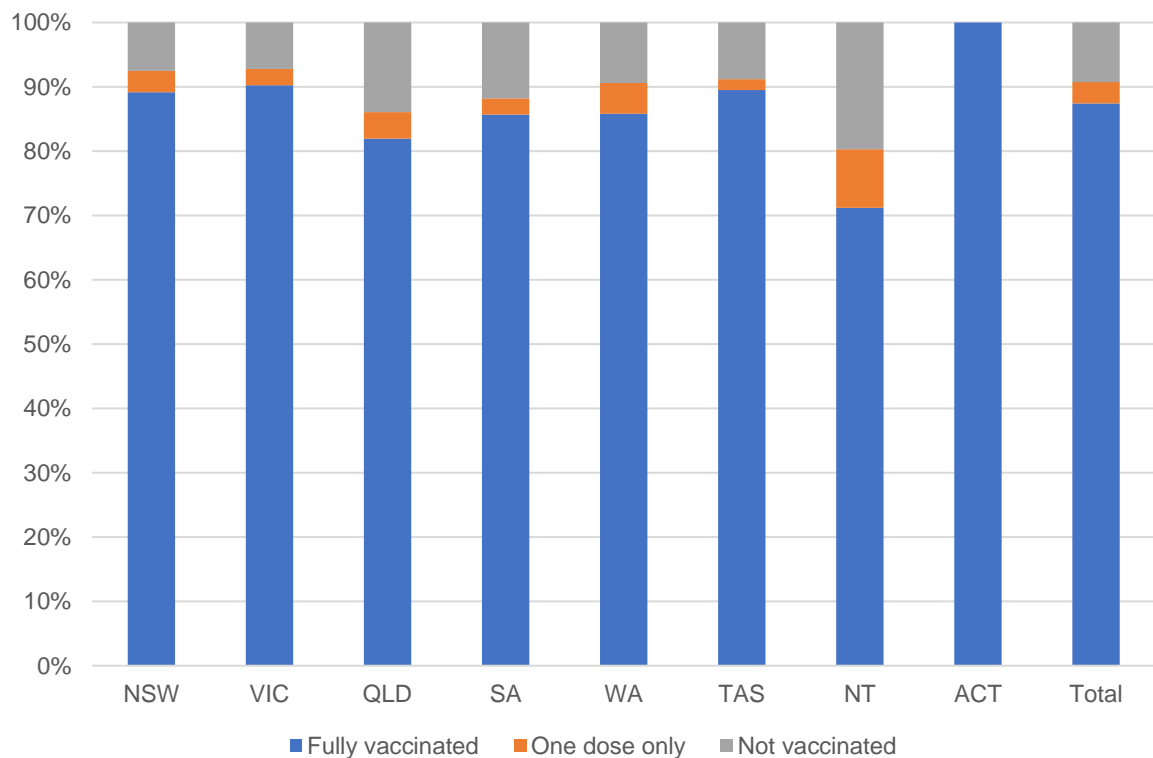
People fully vaccinated

168,409

People with at least one dose

Data as at: 02 Dec 2021

Aged care resident vaccinations



Aged care worker vaccinations

Jurisdictions	Total workers with at least one dose	Workers fully vaccinated	% Workers with at least one dose	% Workers fully vaccinated
NSW	79,208	79,133	99.7%	99.6%
VIC	71,212	71,126	99.8%	99.7%
QLD	49,126	48,894	100.0%	99.5%
SA	27,624	27,179	99.9%	98.3%
WA	23,702	23,537	100.0%	99.3%
TAS	7,674	7,491	99.8%	97.4%
NT	855	850	100.0%	99.4%
ACT	2,997	2,996	100.0%	100.0%
Total	262,398	261,206	99.9%	99.4%

Source: My Aged Care Portal staff vaccination progress

**Resident vaccination information is reported manually by service providers

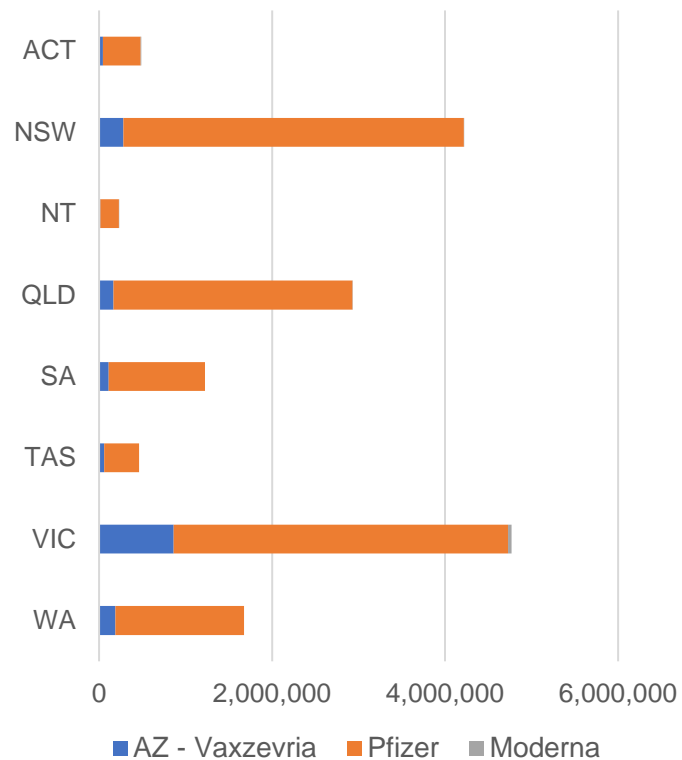
*Status updates are provided by facilities at least once per week. Reporting is updated Monday to Friday to encompass different facility updates being made on different days.

Data is sourced directly from Aged Care Service Providers and is not drawn or closely aligned with data from AIR due to inconsistencies and potential lags in uploading of records.

Data as at:
02 Dec 2021

Jurisdiction administered

Total vaccine doses administered in State and Territory clinics as at 02 December



15,999,505 total vaccine doses administered in State and Territory clinics as at 02 December
 + **30,101** recorded in the last 24 hours
 + **184,572** recorded in the last 7 days

NSW
4,219,732
 (+2,527 daily increase)

VIC
4,769,587
 (+3,838 daily increase)

QLD
2,931,680
 (+11,222 daily increase)

WA
1,675,841
 (+5,048 daily increase)

TAS
462,305
 (+1,288 daily increase)

SA
1,225,215
 (+3,940 daily increase)

ACT
487,107
 (+1,426 daily increase)

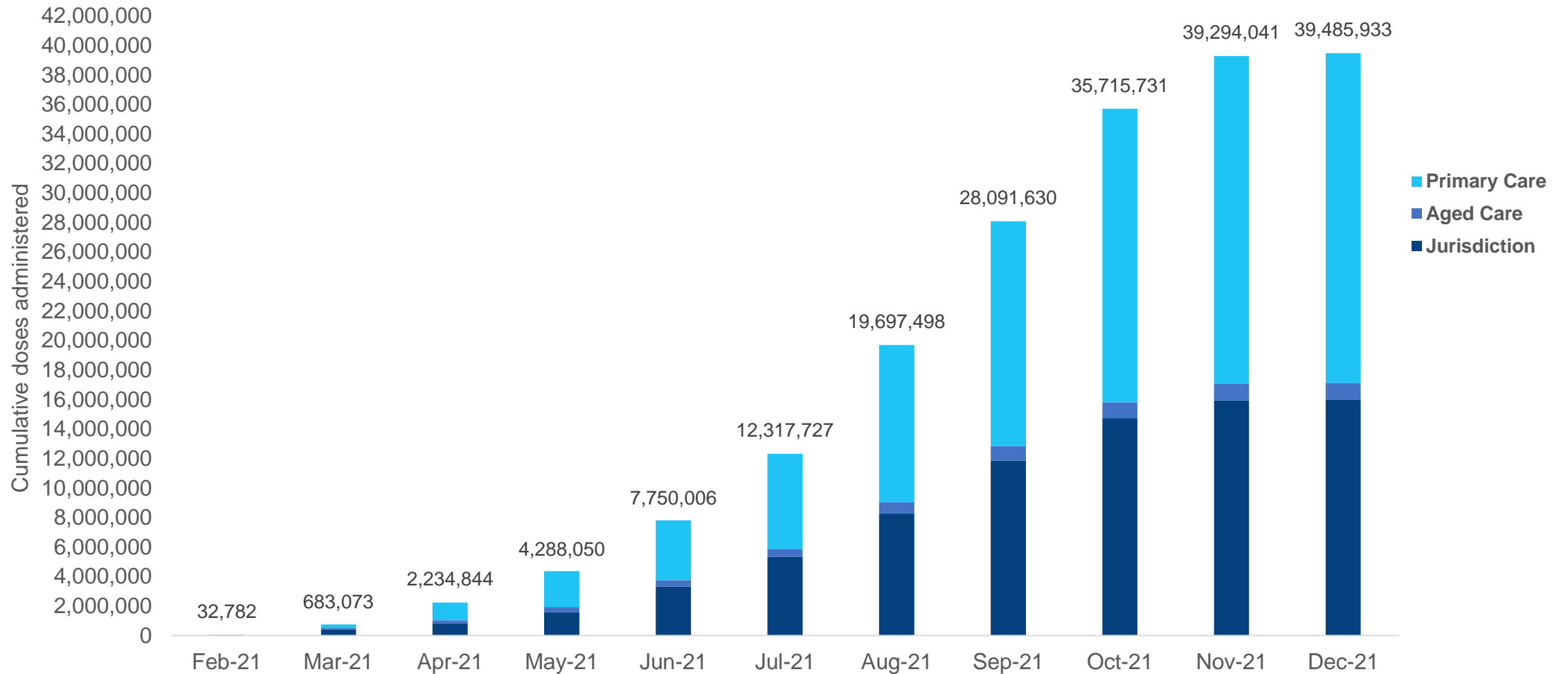
NT
228,038
 (+812 daily increase)

*Sourced from the Australian Immunisation Register and self-reported data. Numbers are calculated as difference in daily cumulative reported numbers to allow for historical corrections in all self-reported data sources.

Source: Australian Immunisation Register

Data as at:
02 Dec 2021

Cumulative doses administered by channel



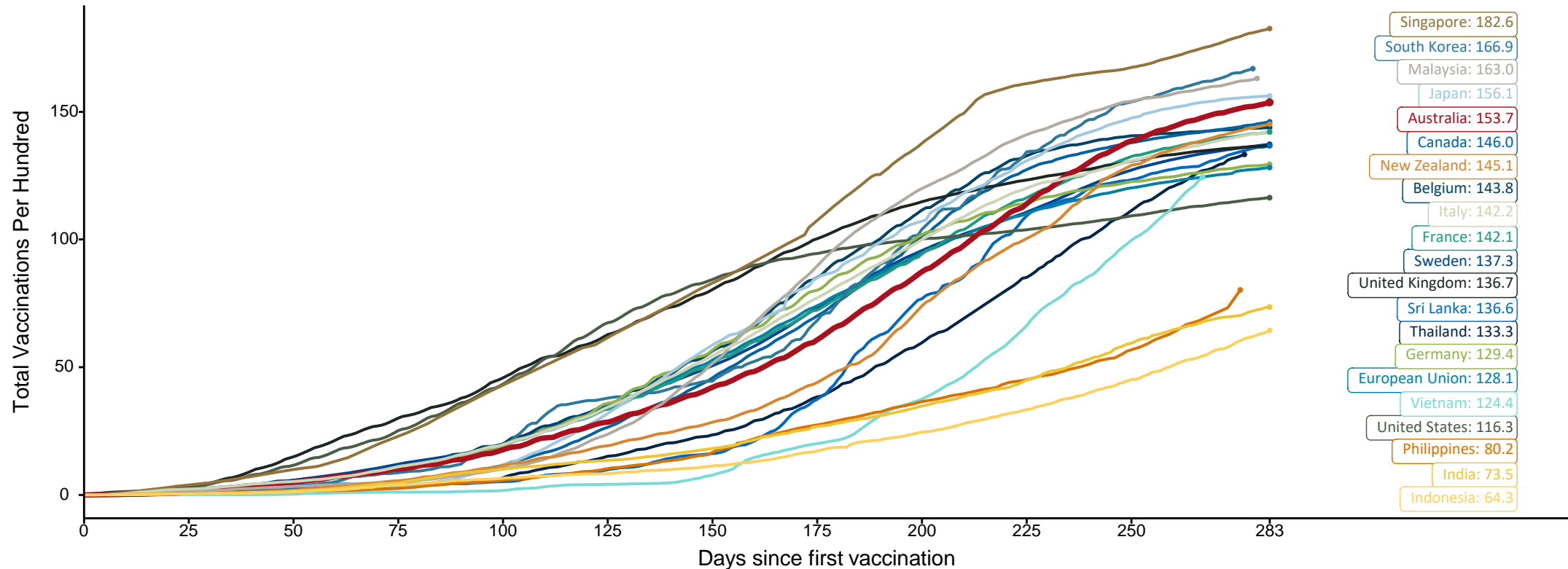
Source: Australian Immunisation Register

Doses at equivalent stages of rollout (Day 283)

Data as at:
02 Dec 2021

The x-axis is truncated at the length of Australia's vaccination program. Countries with intermittent reporting have had their doses per 100 imputed to Australia's current stage of rollout. Israel excluded as it is beyond scale of the graph

Cumulative doses administered (02 Dec): **39,485,933**

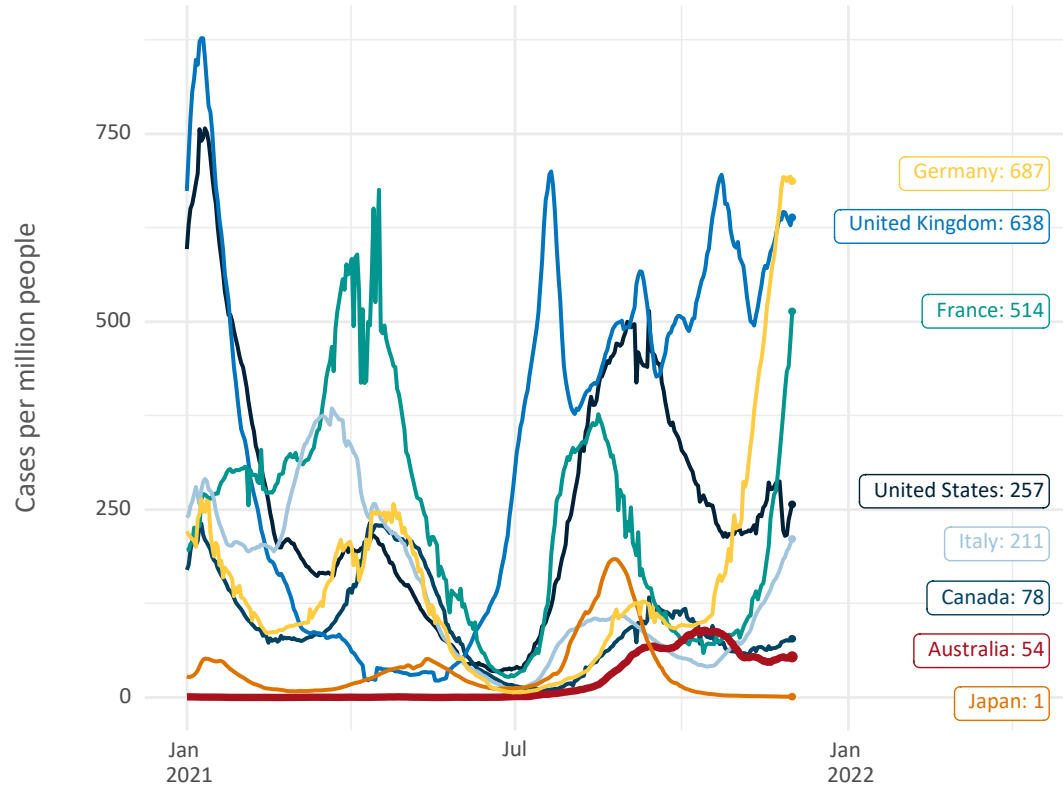


Note: From 15 September 2021, data for Australia includes all doses administered to people 12 and over. Prior to 15 September, data was for 16 and over
 Source: Department of Health (Australia), Our World in Data (international)
 Latest data: 02 December

Data as at:
02 Dec 2021

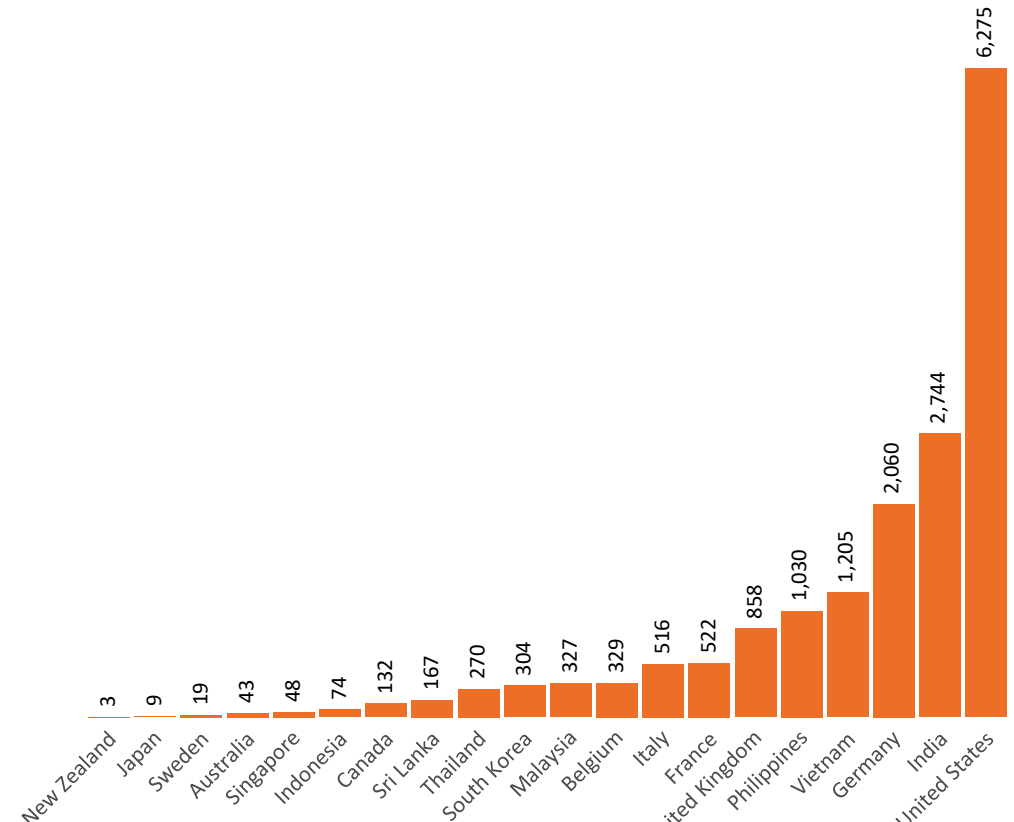
International data – COVID-19

New daily cases per million in 2021, Australia and G7 countries
Smoothed - 7 day average



Source: OWID
Data downloaded: 03 Dec 2021 08:09
Latest data: 01 Dec 2021


COVID-19 deaths in past 7 days - Australia and select countries



Source: OWID
Data downloaded: 03 Dec 2021 08:09
Latest data: 01 Dec 2021

Data as at midnight:
2 Dec 2021

Pandemic Response Payments



2.38 million
People have received at least one COVID Disaster Payment (including ISP200)

\$13.06 billion
Paid Out as at 2 Dec 2021


6.11 million
Claims granted across three different payments



94%
of Claims Received Digitally



COVID Disaster Payment:	5.89 million claims received - 2.19 million individuals paid a total of \$12.59 billion.
\$200 Income Support Payment:	352,000 claims received - 183,000 individuals paid a total of \$268.84 million.
Pandemic Leave Disaster Payment:	143,000 claims received - 122,000 individuals paid a total of \$201.47 million.



THREE PAYMENTS AVAILABLE

COVID Disaster Payment
assisting during a lockdown event in a Commonwealth hotspot.

Income Support Payment \$200
for income support recipients who lost at least 8 hours of work.

Pandemic Leave Disaster Payment
for those who have to self-isolate, quarantine or care.

For more information visit:
servicesaustralia.gov.au

COVID-19 DISASTER PAYMENTS

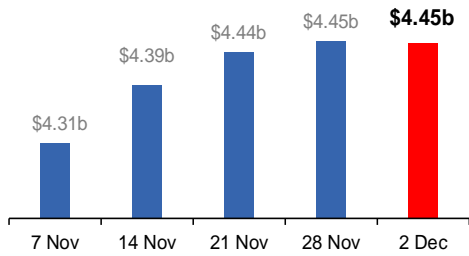
Victoria
Lockdown (#6) since 6 Aug to 28 Oct
Claiming period ends 9 Dec

745,000 people have received at least one COVID Disaster Payment.

\$4.45b paid out as at 2 Dec 2021.

\$15m paid in initial and reoccurring payments in the week ending 28 Nov 2021.

Cumulative payments made by State since activation on 8 Jun 2021.



Date	Cumulative Payments (\$b)
7 Nov	\$4.31b
14 Nov	\$4.39b
21 Nov	\$4.44b
28 Nov	\$4.45b
2 Dec	\$4.45b

Northern Territory
Lockdown (#3) from 16 Nov to 22 Nov
Claiming period ends 27 Dec

6,900 people have received at least one COVID Disaster Payment.

\$5.4m paid out as at 2 Dec 2021.

\$678,000 paid in initial payments in the week ending 28 Nov 2021.

Cumulative payments made by State since activation on 25 Aug 2021.



Date	Cumulative Payments (\$m)
7 Nov	\$3.8m
14 Nov	\$3.9m
21 Nov	\$4.1m
28 Nov	\$4.8m
2 Dec	\$5.4m

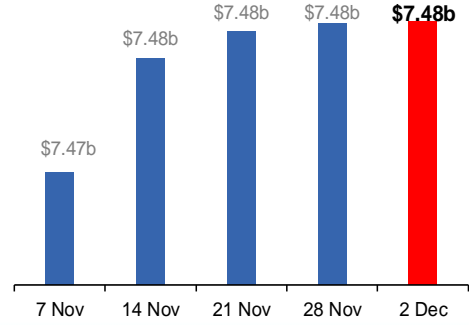
New South Wales
Lockdown from 24 Jun to 10 Oct
Claiming period ended 27 Nov

1.08m people have received at least one COVID Disaster Payment.

\$7.48b paid out as at 2 Dec 2021.

\$754,000 paid in initial and reoccurring payments in the week ending 28 Nov 2021.

Cumulative payments made by State since activation on 1 Jul 2021.



Date	Cumulative Payments (\$b)
7 Nov	\$7.47b
14 Nov	\$7.48b
21 Nov	\$7.48b
28 Nov	\$7.48b
2 Dec	\$7.48b

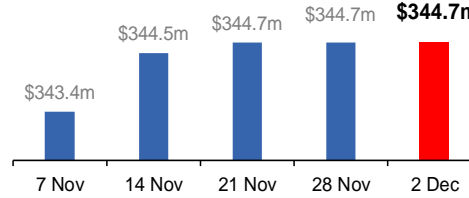
Australian Capital Territory
Lockdown since 12 Aug to 14 Oct
Claiming period ended 25 Nov

65,000 people have received at least one COVID Disaster Payment.

\$344.7m paid out as at 2 Dec 2021.

\$30,000 paid in initial and reoccurring payments in the week ending 28 Nov 2021.

Cumulative payments made by State since activation on 20 Aug 2021.



Date	Cumulative Payments (\$m)
7 Nov	\$343.4m
14 Nov	\$344.5m
21 Nov	\$344.7m
28 Nov	\$344.7m
2 Dec	\$344.7m

Pandemic Response Payments (continued)

Data as at midnight:
2 Dec 2021

COVID-19 DISASTER PAYMENTS

