



Australian Government
Operation COVID Shield

COVID-19 Vaccine Roll-out

29 December 2021

Data as at:
28 Dec 2021

Total vaccine doses



42,289,453 total vaccine
doses administered nationally as at 28 December
+37,226 recorded in the last 24 hours



19,432,639

people have had at least one
dose

94.2%

of people over the age of 16
have had at least one dose



18,802,753

people are fully vaccinated

91.2%

of people over the age of 16 are
fully vaccinated



2,144,822

people over the age of 16
who have received more
than two doses

NSW
13,621,571
(+8,967 daily
increase)

VIC
11,252,128
(+5,073 daily
increase)

QLD
8,153,596
(+7,439 daily
increase)

WA
4,033,077
(+9,251 daily
increase)

TAS
931,765
(+376 daily
increase)

SA
2,844,524
(+5,199 daily
increase)

ACT
1,034,527
(+810 daily
increase)

NT
418,265
(+111 daily
increase)

*Administration state breakdown indicates state in which a vaccine was administered

**Overall dose count includes instances of more than two doses per person in a small number of cases.

Source: Australian Immunisation Register

Data as at:
28 Dec 2021

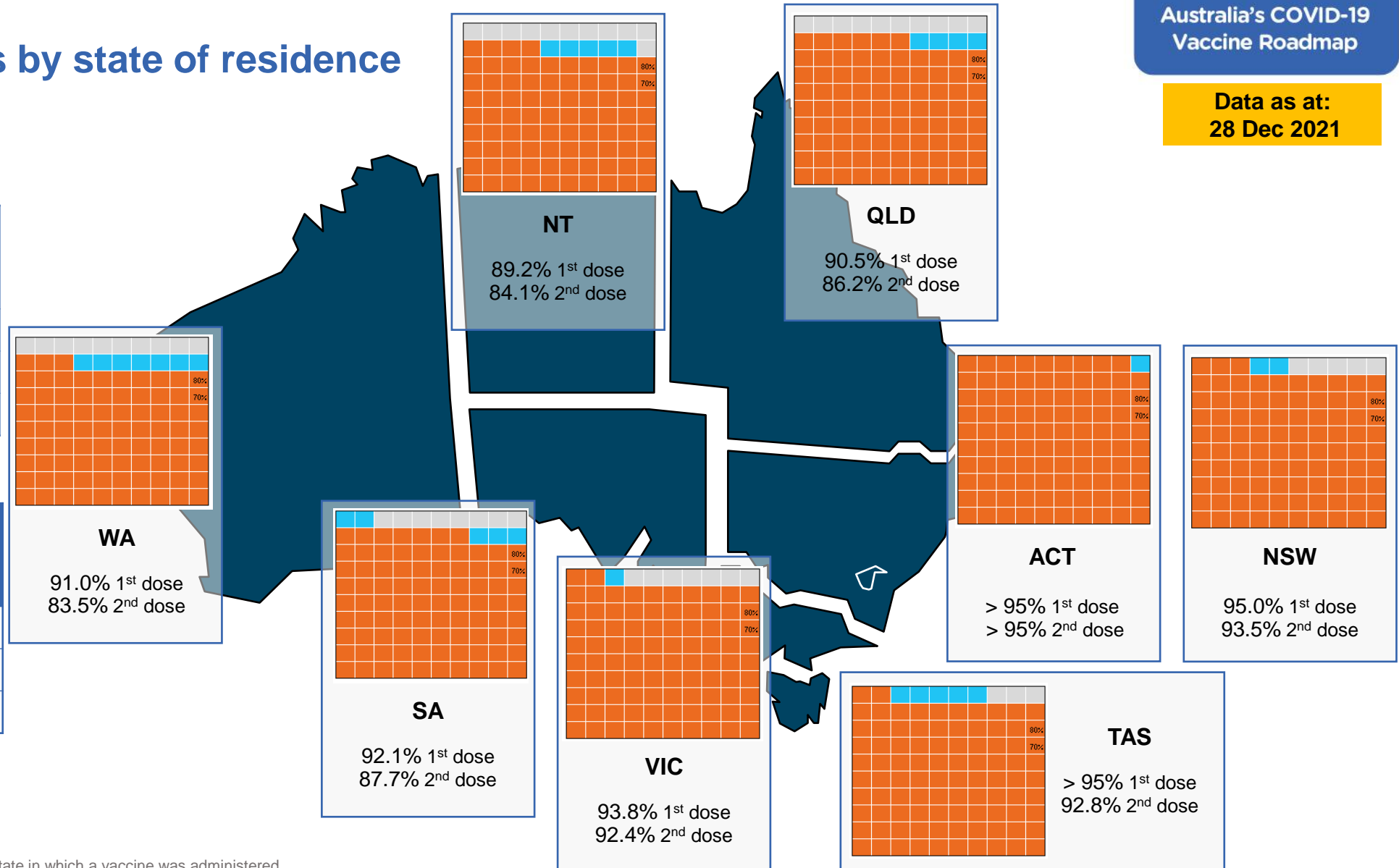
Vaccinations by state of residence

First doses

Age	Today	4 weeks ago	8 weeks ago
16+	94.2%	92.8%	89.1%
50+	>95%	>95%	>95%
70+	>95%	>95%	>95%

Fully vaccinated

Age	Today	4 weeks ago	8 weeks ago
16+	91.2%	87.6%	79.2%
50+	>95%	94.4%	87.9%
70+	>95%	>95%	92.7%



*Residential state may differ from the state in which a vaccine was administered

Commonwealth and Jurisdiction vaccine doses administered

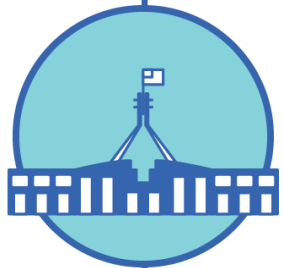
Data as at:
28 Dec 2021



42,289,453 total vaccine
doses administered nationally as at 28 December
+ 37,226 recorded in the last 24 hours



16,923,974
doses administered by state
and territory facilities
+ 14,716
recorded in the last 24 hours



25,365,479
doses administered by
commonwealth facilities
+ 22,510
recorded in the last 24 hours
24,192,535 total vaccine doses
administered in primary care settings
1,172,944 total vaccine doses
administered in aged care and disability
settings

NSW	Jurisdictions	Commonwealth
Cumulative	4,375,122	9,246,449
Daily increase	2,617	6,350

VIC	Jurisdictions	Commonwealth
Cumulative	4,929,424	6,322,704
Daily increase	499	4,574

QLD	Jurisdictions	Commonwealth
Cumulative	3,226,067	4,927,529
Daily increase	888	6,551

WA	Jurisdictions	Commonwealth
Cumulative	1,796,253	2,236,824
Daily increase	6,346	2,905

TAS	Jurisdictions	Commonwealth
Cumulative	491,641	440,124
Daily increase	0	376

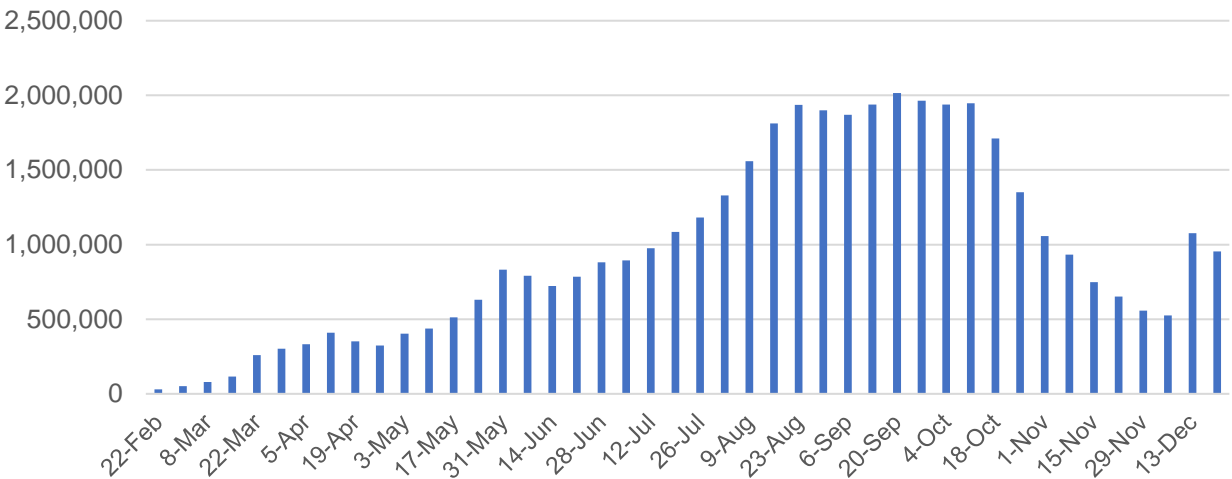
SA	Jurisdictions	Commonwealth
Cumulative	1,330,186	1,514,338
Daily increase	4,042	1,157

ACT	Jurisdictions	Commonwealth
Cumulative	530,448	504,079
Daily increase	256	554

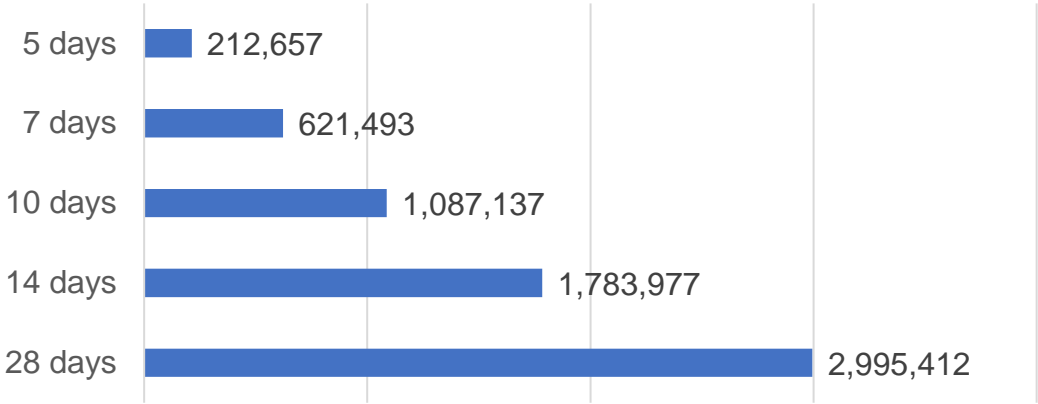
NT	Jurisdictions	Commonwealth
Cumulative	244,833	173,432
Daily increase	68	43

Vaccine milestone charts

Doses Administered by Week



Doses Reported

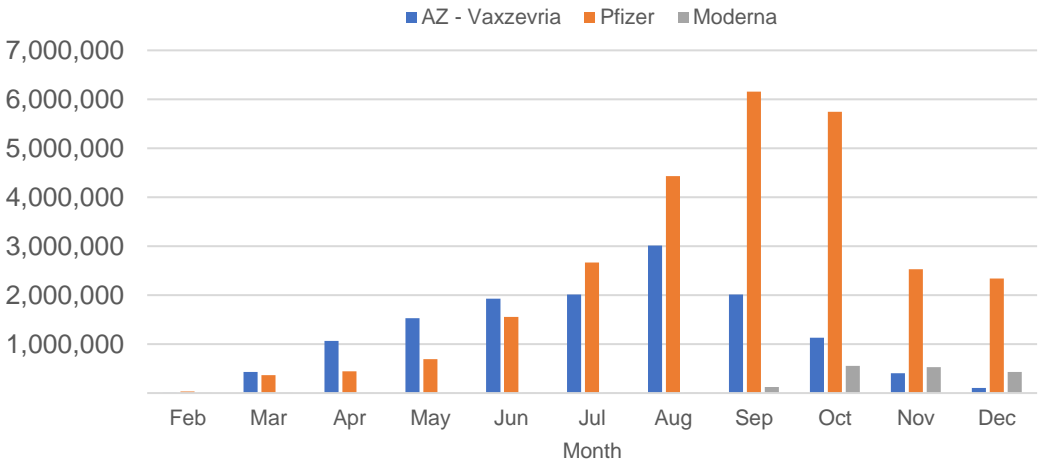


*Sourced from the Australian Immunisation Register.

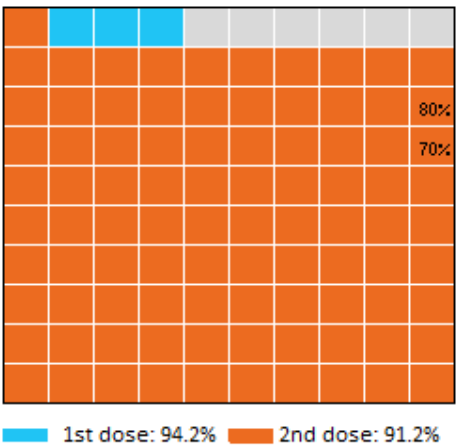
Data as at:
28 Dec 2021

Australia's COVID-19
Vaccine Roadmap

Doses by administration month and vaccine type



Eligible population percentage coverage



*Each square represents 1% of the national population.
Squares are filled as milestones are achieved.

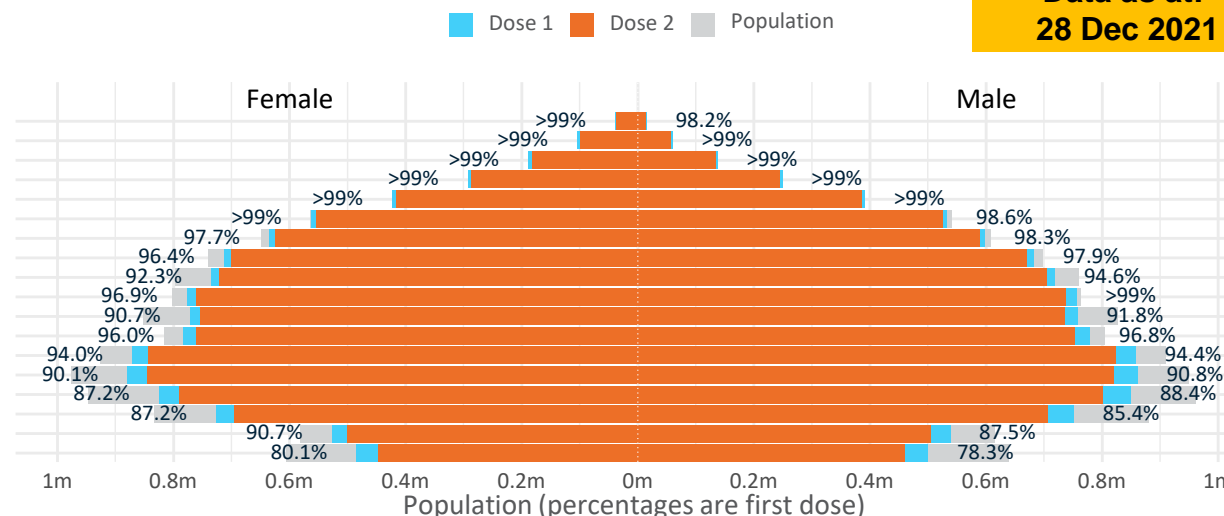
Doses by age and sex

First and second doses by age and sex

Australia's COVID-19
Vaccine Roadmap

Data as at:
28 Dec 2021

Age	Dose 1	Dose 2
95+	54,432 (>99%)	50,625 (95.7%)
90-94	164,924 (>99%)	157,452 (>99%)
85-89	326,546 (>99%)	316,005 (>99%)
80-84	542,550 (>99%)	530,445 (>99%)
75-79	815,539 (>99%)	801,484 (>99%)
70-74	1,096,734 (>99%)	1,079,428 (97.7%)
65-69	1,234,783 (98.1%)	1,213,920 (96.5%)
60-64	1,396,894 (97.2%)	1,370,701 (95.4%)
55-59	1,455,026 (93.5%)	1,426,275 (91.7%)
50-54	1,533,727 (98.0%)	1,498,831 (95.8%)
45-49	1,531,038 (91.3%)	1,490,671 (88.9%)
40-44	1,564,425 (96.6%)	1,516,000 (93.6%)
35-39	1,733,404 (94.5%)	1,669,725 (91.0%)
30-34	1,748,407 (90.9%)	1,671,310 (86.9%)
25-29	1,684,630 (88.4%)	1,599,544 (83.9%)
20-24	1,483,582 (86.6%)	1,405,139 (82.1%)
16-19	1,065,998 (89.1%)	1,005,198 (84.1%)
12-15	985,178 (79.2%)	906,697 (72.9%)



	AUS	ACT	NSW	NT	QLD	SA	TAS	VIC	WA
16 and over - dose 1	19,432,639	347,121	6,235,611	169,945	3,722,712	1,327,147	429,695	5,072,926	1,923,766
16 and over - dose 2	18,802,753	342,223	6,141,713	160,271	3,544,651	1,263,720	408,425	4,994,716	1,765,402
16 and over - population	20,619,959*	344,037	6,565,651	190,571	4,112,707	1,440,400	440,172	5,407,574	2,114,978
16 and over % with dose 1	94.24%	>99%	94.97%	89.18%	90.52%	92.14%	97.62%	93.81%	90.96%
16 and over % with dose 2	91.19%	>99%	93.54%	84.10%	86.19%	87.73%	92.79%	92.37%	83.47%
50 and over - dose 1	8,621,155	134,409	2,781,009	56,700	1,689,369	653,157	215,588	2,181,825	852,987
50 and over - dose 2	8,445,166	132,849	2,748,600	54,889	1,644,445	633,417	209,673	2,154,086	816,597
50 and over - population	8,749,703	127,802	2,807,793	62,280	1,758,855	674,384	220,036	2,211,211	885,370
50 and over % with dose 1	98.53%	>99%	>99%	91.04%	96.05%	96.85%	97.98%	98.67%	96.34%
50 and over % with dose 2	96.52%	>99%	97.89%	88.13%	93.50%	93.93%	95.29%	97.42%	92.23%
70 and over - dose 1	3,000,725	43,911	985,031	11,677	579,805	244,364	79,149	754,283	280,902
70 and over - dose 2	2,935,439	43,251	970,153	11,295	565,106	236,766	76,831	741,971	270,767
70 and over - population	2,934,706	39,946	962,606	12,343	577,767	240,514	77,155	743,519	280,281
70 and over % with dose 1	>99%	>99%	>99%	94.60%	>99%	>99%	>99%	>99%	>99%
70 and over % with dose 2	>99%	>99%	>99%	91.51%	97.81%	98.44%	>99%	>99%	96.61%
12 to 15 - dose 1	985,178	19,746	318,046	9,975	188,871	61,631	20,716	271,513	87,265
12 to 15 - dose 2	906,697	19,086	305,019	8,589	167,492	54,306	18,483	257,544	70,044
12 to 15 - population	1,243,990	19,693	390,330	13,060	270,146	82,747	26,308	308,611	132,869
12 to 15 % with dose 1	79.20%	>99%	81.48%	76.38%	69.91%	74.48%	78.74%	87.98%	65.68%
12 to 15 % with dose 2	72.89%	96.92%	78.14%	65.77%	62.00%	65.63%	70.26%	83.45%	52.72%

*National population will not equal sum of listed jurisdictions due to a small number of people counted in national population residing in some 'other' territories. Due to data revisions Singapore has been removed. Sum of state doses will not add to national total as some records are unable to be geocoded to a State or Territory.
Doses sourced from Australian Immunisation Register, population from ABS ERP June 2020

Aboriginal and Torres Strait Islander peoples

Number of people vaccinated

Data as at:
28 Dec 2021 Updated
weekly

Australia's COVID-19
Vaccine Roadmap



415,514

people over the age of 16
have had at least one dose

78.8%

of people over the age of 16
have had at least one dose



374,181

people over the age of 16
are fully vaccinated

71.1%

of people over the age of 16 are
fully vaccinated



**42,469
(59.4%)**

people aged 12-15 years
have had at least one dose

173 Aboriginal community controlled health services (ACCHS)

0#	50	27	41	12	3	21	19
ACT	NSW	NT	QLD	SA	TAS	VIC	WA

Medicare Address State ^{##}	Individuals Dose 1	Individuals Dose 1 %	Individuals Dose 2	Individuals Dose 2 %
Australian Capital Territory	4,953	90.7%	4,800	87.9%
New South Wales	137,647	86.2%	133,561	83.7%
Northern Territory	39,591	84.2%	34,497	73.4%
Queensland	108,070	75.4%	93,797	65.4%
South Australia	18,694	73.6%	16,211	63.8%
Tasmania	14,416	84.9%	13,336	78.5%
Victoria	35,757	88.6%	34,561	85.6%
Western Australia	42,332	66.4%	32,420	50.8%
Unknown/Other Territories	14,054	56.0%	10,998	43.8%
Totals	415,514	78.8%	374,181	71.0%

Source: Australian Immunisation Register

*Identifying as Aboriginal and Torres Strait Islander is optional and the estimated population may be under reported.

**Includes all Aboriginal and Torres Strait Islander peoples who have received a vaccination, not limited to those administered in an ACCHS setting

#ACCHS in the ACT are currently operating as a Commonwealth Vaccine Clinics so not included to avoid double counting

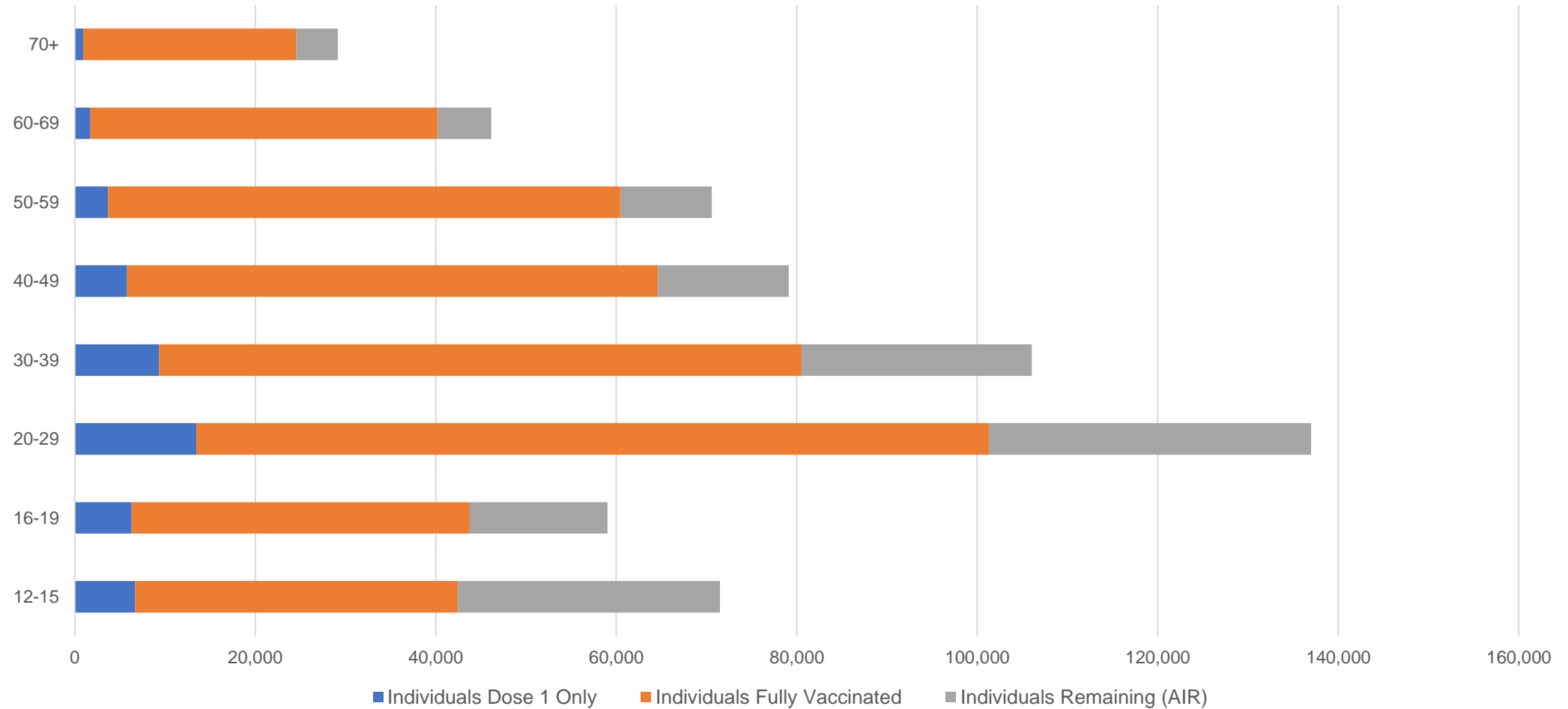
##The above table includes all identified Aboriginal and Torres Strait Islander people who are aged 16 and above by their state of residence.

Aboriginal and Torres Strait Islander peoples

Number of people vaccinated by age

Data as at:
28 Dec 2021
Updated weekly

Australia's COVID-19
Vaccine Roadmap



Source: Australian Immunisation Register

Data as at:
28 Dec 2021

Commonwealth primary care



Primary care vaccine administration sites

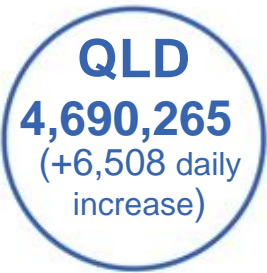
5,674	137	173	3,472
GPs	CVCs	ACCHS	Pharmacies



24,192,535 total vaccine doses administered
primary care settings as at 28 December
+ 22,433 recorded in the last 24 hours

Primary care vaccinations by provider type

	Doses administered	Daily increase	7 day increase
General Practice* includes other Commonwealth	21,130,741	8,860	242,180
Pharmacy	3,061,794	13,573	172,048



135,912 doses administered to persons
residing in other territories or with
missing residential information

*General practice includes Commonwealth Vaccination Clinics, Aboriginal Community Health Centres, Royal Flying Doctor Service and other Commonwealth vaccination facilities

Source: Australian Immunisation Register

Data as at:
28 Dec 2021

Commonwealth aged care and disability doses administered



1,172,944 (+ 77 last 24 hours)

Total vaccine doses administered in aged care and disability facilities as at 28 December

Number of doses administered as part of the Commonwealth aged and disability care rollout

NSW
537,660
(+6 daily increase)

VIC
218,102
(+1 daily increase)

QLD
183,173
(+78 daily increase)

WA
84,599
(-1# daily increase)

TAS
21,095
(+4 daily increase)

SA
78,143
(+0 daily increase)

ACT
15,343
(-3# daily increase)

NT
6,650
(+0 daily increase)

28,179

doses administered to persons
residing in other territories or with
missing residential information

Source: Australian Immunisation Register

*Sourced from the Australian Immunisation Register. Includes all persons vaccinated at participating residential aged care, disability and related industry settings.

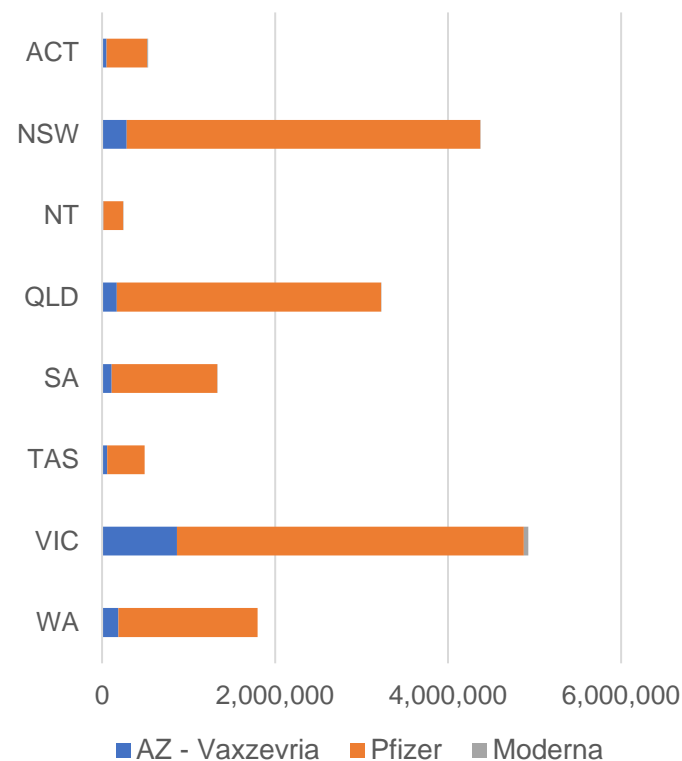
**State level breakdown indicates the residential location and may not align to the state in which the vaccination occurred.

#Numbers are calculated as difference in daily cumulative reported numbers to allow for historical corrections in all data sources. This can occasionally result in negative numbers, such as for WA and ACT, where historical details about doses have been updated.

Data as at:
28 Dec 2021

Jurisdiction administered

Total vaccine doses administered in State and Territory clinics as at 28 December



16,923,974 total vaccine doses administered
in State and Territory clinics as at 28 December
+ **14,716** recorded in the last 24 hours
+ **202,468** recorded in the last 7 days

NSW
4,375,122
(+2,617 daily
increase)

VIC
4,929,424
(+499 daily
increase)

QLD
3,226,067
(+888 daily
increase)

WA
1,796,253
(+6,346 daily
increase)

TAS
491,641
(+0 daily
increase)

SA
1,330,186
(+4,042 daily
increase)

ACT
530,448
(+256 daily
increase)

NT
244,833
(+68 daily
increase)

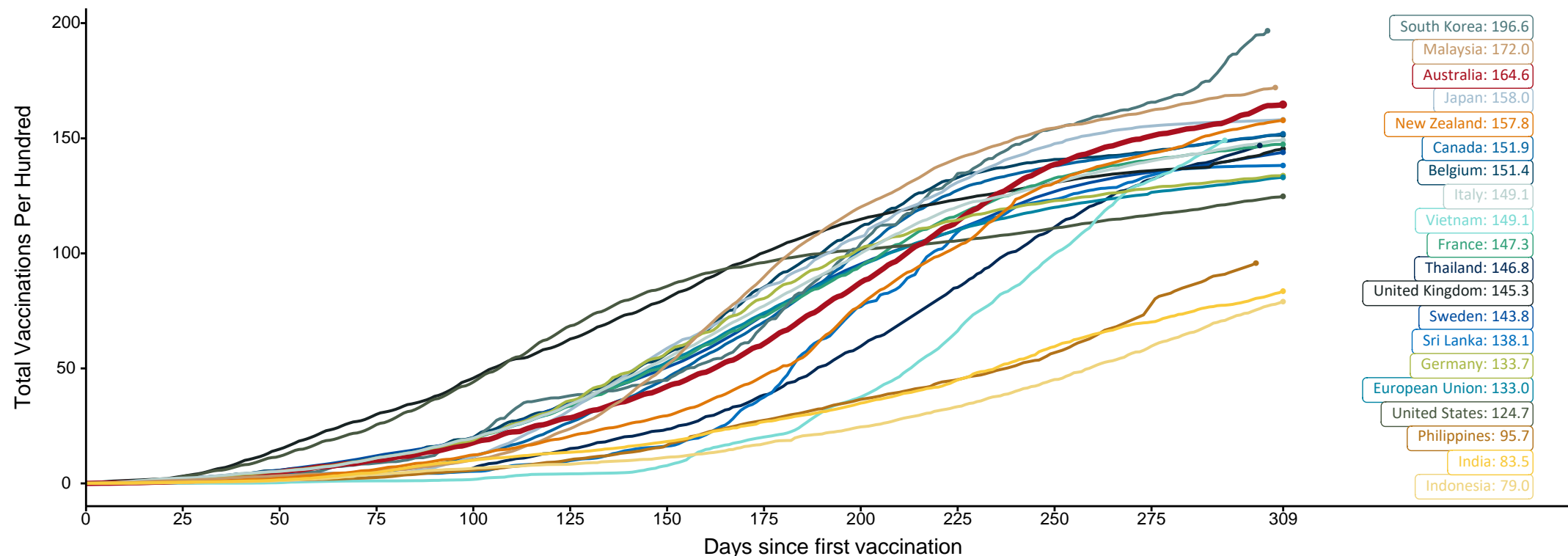
*Sourced from the Australian Immunisation Register and self-reported data. Numbers are calculated as difference in daily cumulative reported numbers to allow for historical corrections in all self-reported data sources.

Doses at equivalent stages of rollout (Day 309)

Data as at:
28 Dec 2021

The x-axis is truncated at the length of Australia's vaccination program. Countries with intermittent reporting have had their doses per 100 imputed to Australia's current stage of rollout. Israel excluded as it is beyond scale of the graph

Cumulative doses administered (28 Dec): **42,289,453**

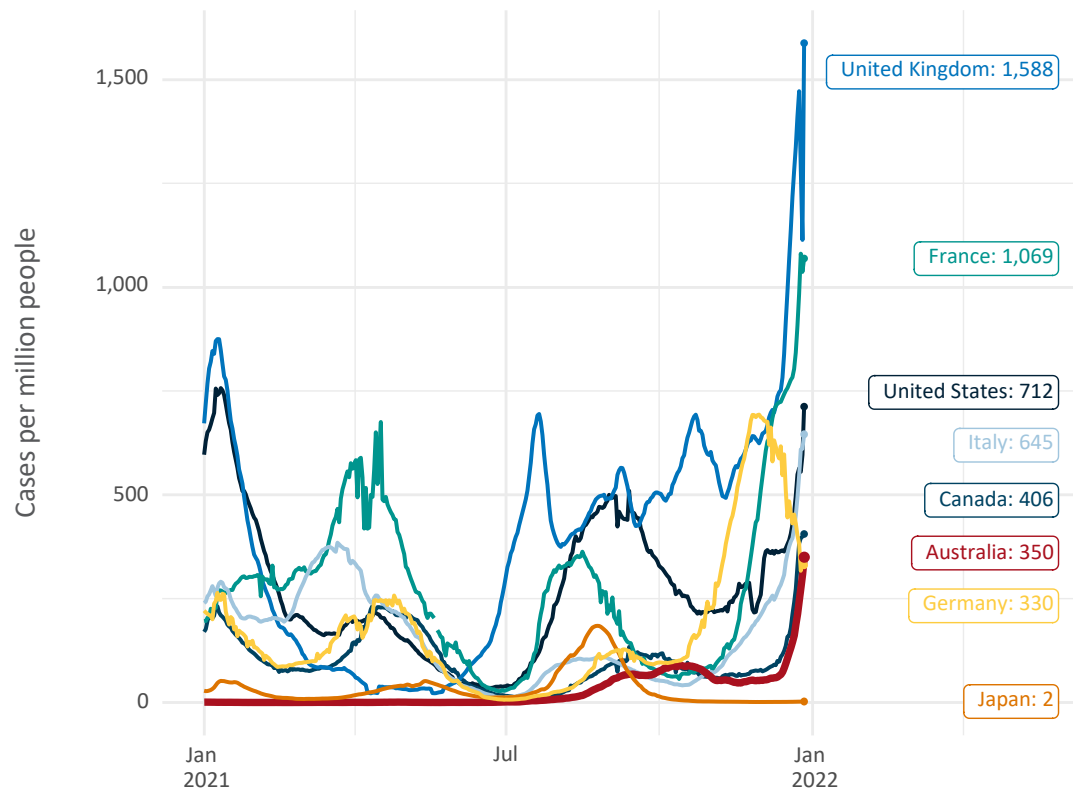


Note: From 15 September 2021, data for Australia includes all doses administered to people 12 and over. Prior to 15 September, data was for 16 and over
Due to data revisions, Singapore has been removed from the chart
Source: Department of Health (Australia), Our World in Data (international)
Latest data: 28 December

International data – COVID-19

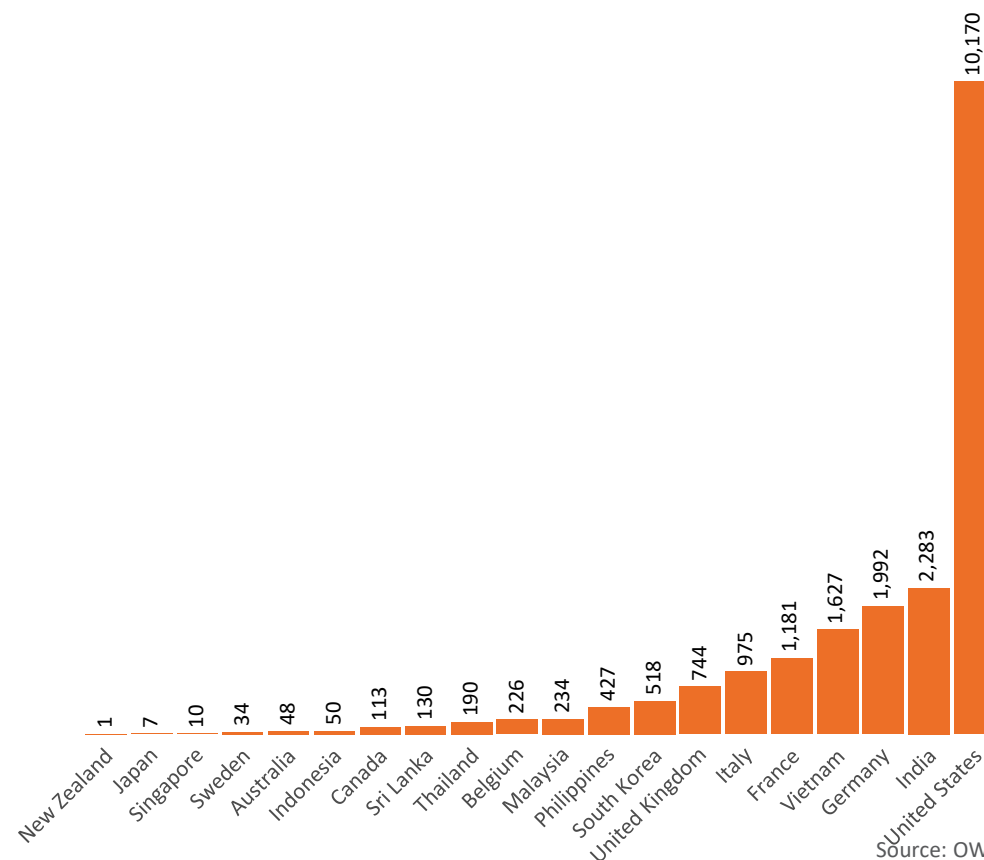
Data as at:
28 Dec 2021

New daily cases per million in 2021, Australia and G7 countries
Smoothed - 7 day average



Source: OWID
Data downloaded: 29 Dec 2021 08:11
Latest data: 27 Dec 2021

COVID-19 deaths in past 7 days - Australia and select countries



Source: OWID
Data downloaded: 29 Dec 2021 08:11
Latest data: 27 Dec 2021