



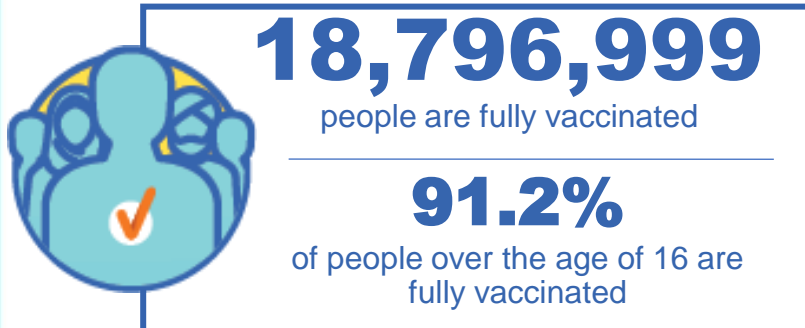
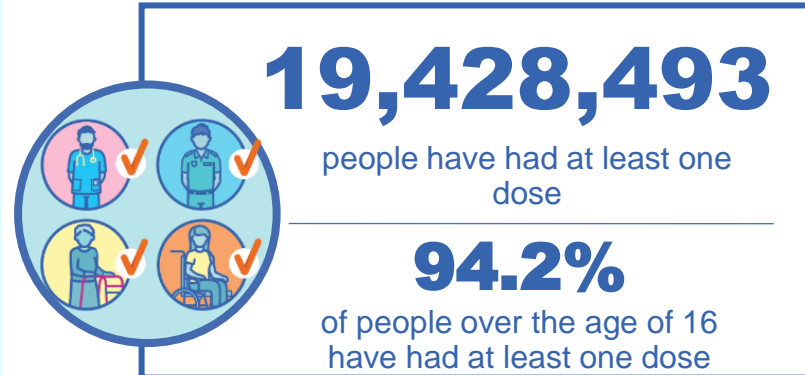
Australian Government
Operation COVID Shield

COVID-19 Vaccine Rollout

28 December 2021

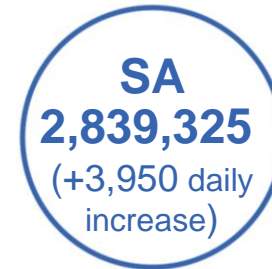
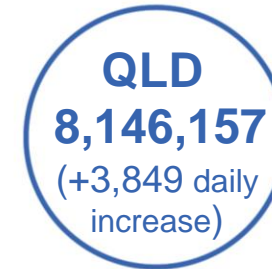
Data as at:
27 Dec 2021

Total vaccine doses



42,252,227 total vaccine doses administered nationally as at 27 December

+31,159 recorded in the last 24 hours



*Administration state breakdown indicates state in which a vaccine was administered

**Overall dose count includes instances of more than two doses per person in a small number of cases.

Source: Australian Immunisation Register

Data as at:
27 Dec 2021

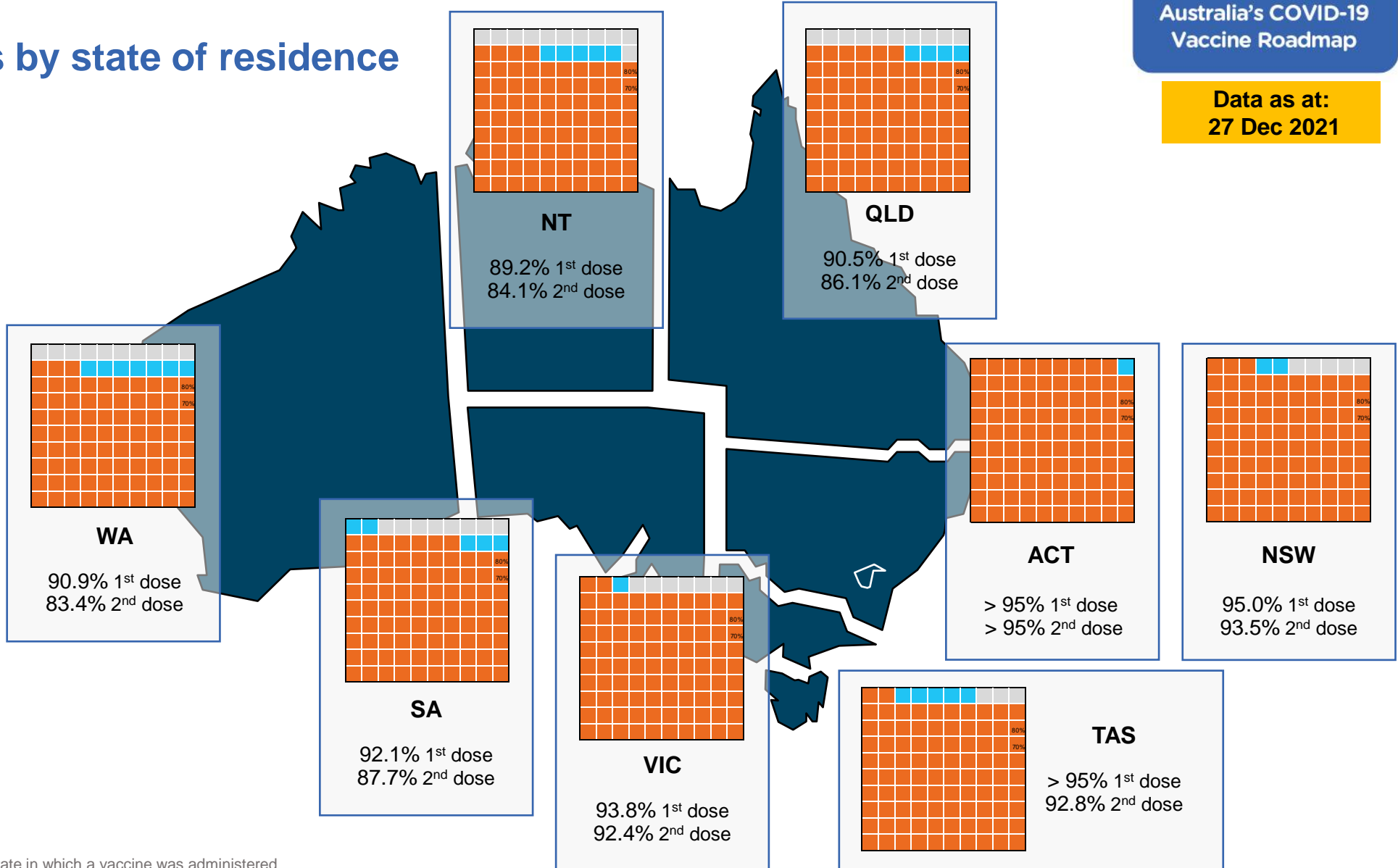
Vaccinations by state of residence

First doses

Age	Today	4 weeks ago	8 weeks ago
16+	94.2%	92.7%	89.0%
50+	>95%	>95%	>95%
70+	>95%	>95%	>95%

Fully vaccinated

Age	Today	4 weeks ago	8 weeks ago
16+	91.2%	87.4%	78.8%
50+	>95%	94.2%	87.6%
70+	>95%	>95%	92.4%



*Residential state may differ from the state in which a vaccine was administered

Commonwealth and Jurisdiction vaccine doses administered

Data as at:
27 Dec 2021



42,252,227 total vaccine doses administered nationally as at 27 December
+ 31,159 recorded in the last 24 hours

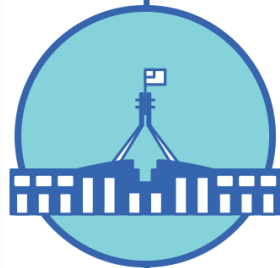


16,909,258

doses administered by state and territory facilities

+ 12,624

recorded in the last 24 hours



25,342,969

doses administered by commonwealth facilities

+ 18,535

recorded in the last 24 hours

24,170,102 total vaccine doses administered in primary care settings

1,172,867 total vaccine doses administered in aged care and disability settings

NSW	Jurisdictions	Commonwealth
Cumulative	4,372,505	9,240,099
Daily increase	2,527	5,394

VIC	Jurisdictions	Commonwealth
Cumulative	4,928,925	6,318,130
Daily increase	531	5,116

QLD	Jurisdictions	Commonwealth
Cumulative	3,225,179	4,920,978
Daily increase	5	3,844

WA	Jurisdictions	Commonwealth
Cumulative	1,789,907	2,233,919
Daily increase	6,211	2,365

TAS	Jurisdictions	Commonwealth
Cumulative	491,641	439,748
Daily increase	0	355

SA	Jurisdictions	Commonwealth
Cumulative	1,326,144	1,513,181
Daily increase	2,987	963

ACT	Jurisdictions	Commonwealth
Cumulative	530,192	503,525
Daily increase	229	293

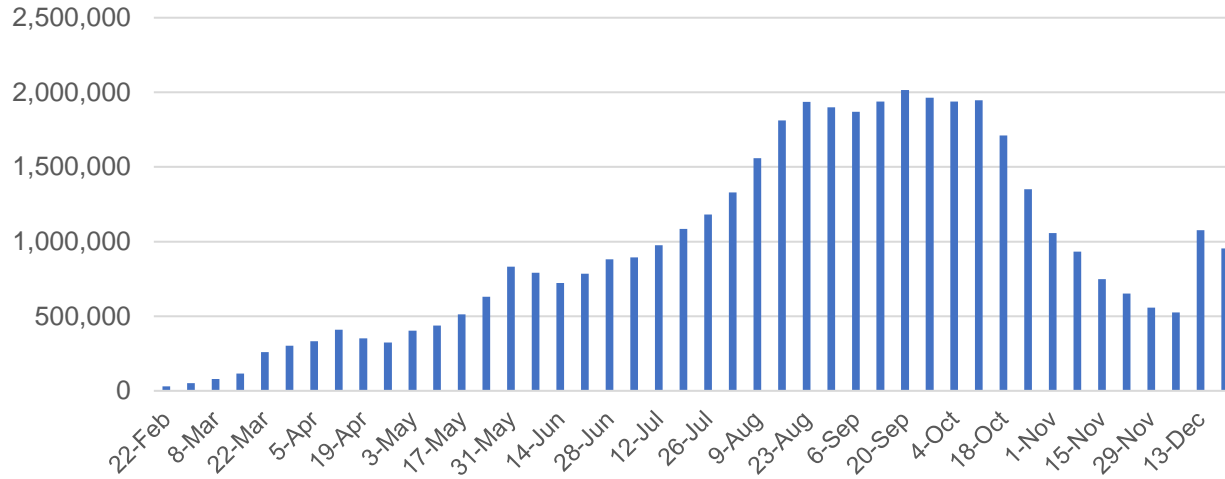
NT	Jurisdictions	Commonwealth
Cumulative	244,765	173,389
Daily increase	134	205

Vaccine milestone charts

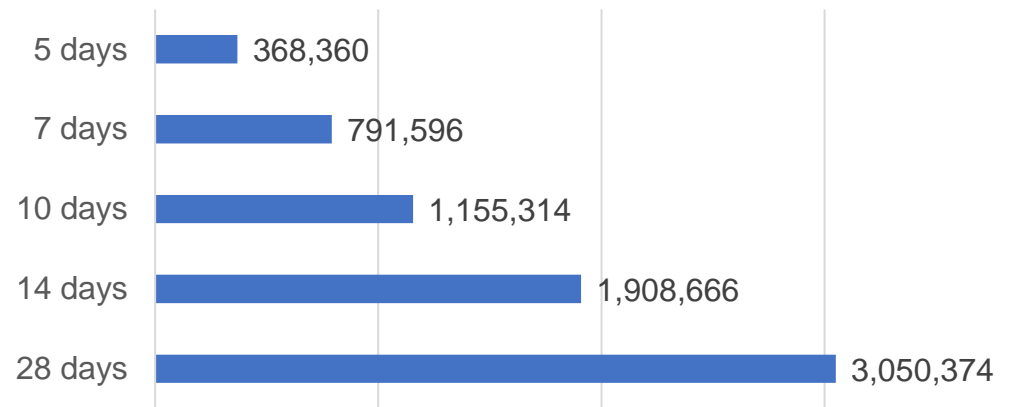
Data as at:
27 Dec 2021

Australia's COVID-19
Vaccine Roadmap

Doses Administered by Week

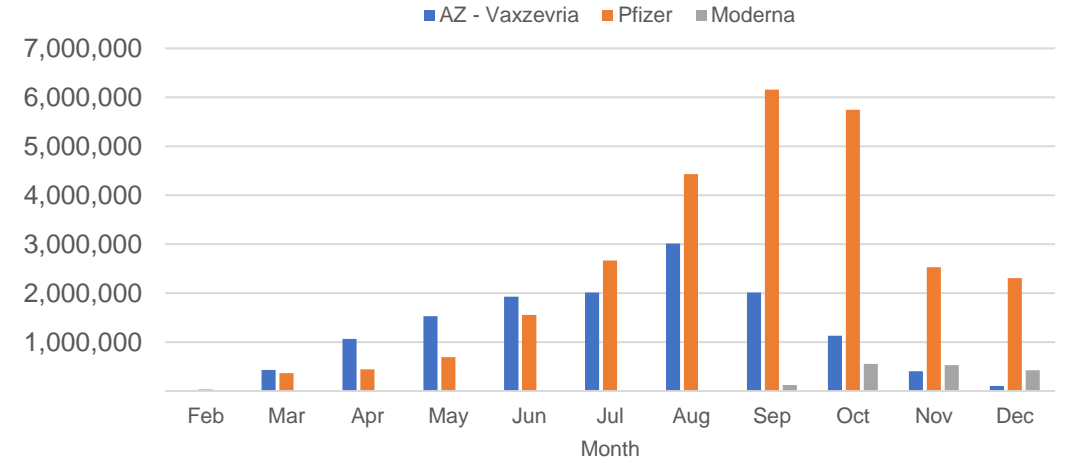


Doses Reported

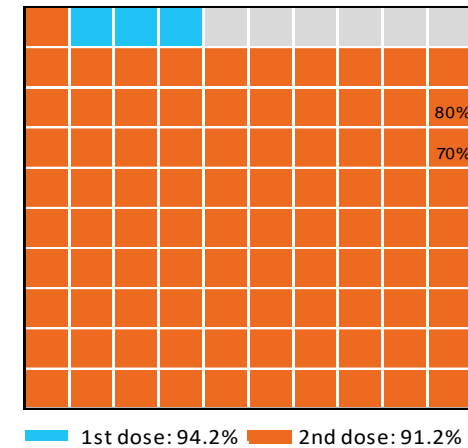


*Sourced from the Australian Immunisation Register.

Doses by administration month and vaccine type



Eligible population percentage coverage



*Each square represents 1% of the national population. Squares are filled as milestones are achieved.

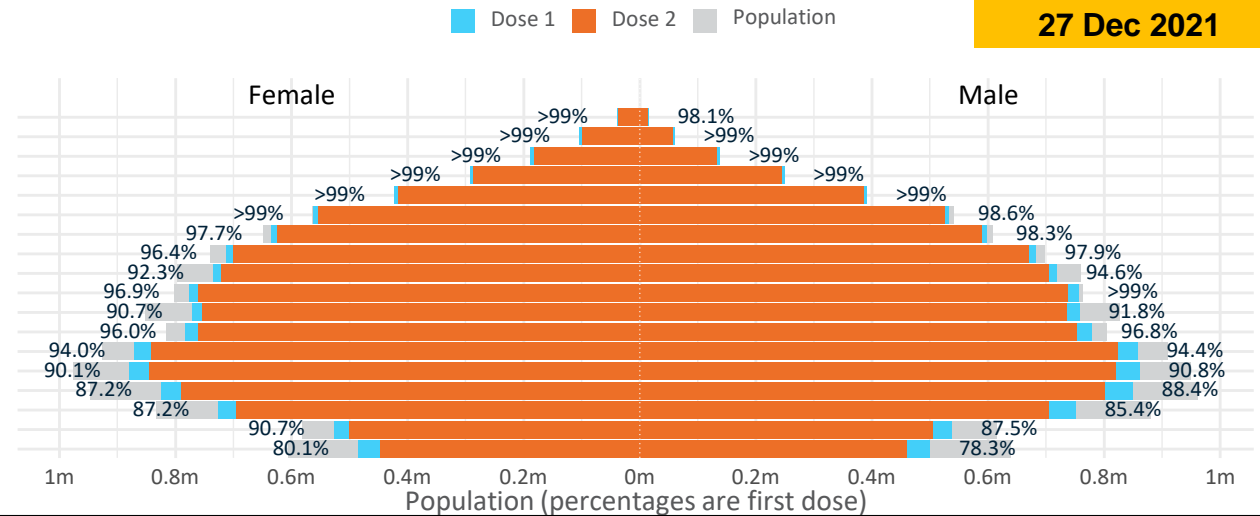
Doses by age and sex

First and second doses by age and sex

Data as at:
27 Dec 2021

	16+	50+	70+	12-15
Dose 1	94.22% (19,428,493 doses / 20,619,959 people)	98.52% (8,619,793 doses / 8,749,703 people)	>99% (2,999,995 doses / 2,934,706 people)	79.21% (985,383 doses / 1,243,990 people)
Dose 2	91.16% (18,796,999 doses / 20,619,959 people)	96.50% (8,443,601 doses / 8,749,703 people)	>99% (2,934,674 doses / 2,934,706 people)	72.92% (907,057 doses / 1,243,990 people)

Age	Dose 1	Dose 2
95+	54,380 (>99%)	50,576 (95.6%)
90-94	164,865 (>99%)	157,381 (>99%)
85-89	326,419 (>99%)	315,865 (>99%)
80-84	542,417 (>99%)	530,307 (>99%)
75-79	815,194 (>99%)	801,145 (>99%)
70-74	1,096,720 (>99%)	1,079,400 (97.7%)
65-69	1,234,654 (98.1%)	1,213,770 (96.5%)
60-64	1,396,687 (97.2%)	1,370,424 (95.4%)
55-59	1,454,840 (93.5%)	1,426,075 (91.7%)
50-54	1,533,617 (98.0%)	1,498,658 (95.8%)
45-49	1,530,842 (91.3%)	1,490,370 (88.9%)
40-44	1,564,027 (96.5%)	1,515,509 (93.5%)
35-39	1,732,949 (94.4%)	1,669,045 (91.0%)
30-34	1,748,248 (90.9%)	1,670,818 (86.9%)
25-29	1,684,245 (88.3%)	1,598,864 (83.9%)
20-24	1,483,084 (86.6%)	1,404,410 (82.0%)
16-19	1,065,305 (89.1%)	1,004,382 (84.0%)
12-15	985,383 (79.2%)	907,057 (72.9%)



	AUS	ACT	NSW	NT	QLD	SA	TAS	VIC	WA
16 and over - dose 1	19,428,493	347,081	6,235,186	169,940	3,721,661	1,326,781	429,662	5,072,563	1,921,830
16 and over - dose 2	18,796,999	342,154	6,141,236	160,243	3,542,718	1,263,134	408,367	4,994,188	1,763,290
16 and over - population	20,619,959*	344,037	6,565,651	190,571	4,112,707	1,440,400	440,172	5,407,574	2,114,978
16 and over % with dose 1	94.22%	>99%	94.97%	89.17%	90.49%	92.11%	97.61%	93.80%	90.87%
16 and over % with dose 2	91.16%	>99%	93.54%	84.09%	86.14%	87.69%	92.77%	92.36%	83.37%
50 and over - dose 1	8,619,793	134,397	2,780,724	56,692	1,689,038	653,033	215,579	2,181,610	852,588
50 and over - dose 2	8,443,601	132,829	2,748,315	54,880	1,644,006	633,245	209,656	2,153,827	816,216
50 and over - population	8,749,703	127,802	2,807,793	62,280	1,758,855	674,384	220,036	2,211,211	885,370
50 and over % with dose 1	98.52%	>99%	>99%	91.03%	96.03%	96.83%	97.97%	98.66%	96.30%
50 and over % with dose 2	96.50%	>99%	97.88%	88.12%	93.47%	93.90%	95.28%	97.40%	92.19%
70 and over - dose 1	2,999,995	43,903	984,824	11,674	579,643	244,308	79,130	754,103	280,809
70 and over - dose 2	2,934,674	43,238	969,944	11,292	564,937	236,702	76,809	741,786	270,670
70 and over - population	2,934,706	39,946	962,606	12,343	577,767	240,514	77,155	743,519	280,281
70 and over % with dose 1	>99%	>99%	>99%	94.58%	>99%	>99%	>99%	>99%	>99%
70 and over % with dose 2	>99%	>99%	>99%	91.49%	97.78%	98.42%	>99%	>99%	96.57%
12 to 15 - dose 1	985,383	19,765	318,269	9,980	188,930	61,585	20,727	271,699	86,998
12 to 15 - dose 2	907,057	19,106	305,264	8,595	167,516	54,279	18,495	257,698	69,959
12 to 15 - population	1,243,990	19,693	390,330	13,060	270,146	82,747	26,308	308,611	132,869
12 to 15 % with dose 1	79.21%	>99%	81.54%	76.42%	69.94%	74.43%	78.79%	88.04%	65.48%
12 to 15 % with dose 2	72.92%	97.02%	78.21%	65.81%	62.01%	65.81%	70.30%	83.50%	52.65%

*National population will not equal sum of listed jurisdictions due to a small number of people counted in national population residing in some 'other' territories. Due to data revisions Singapore has been removed. Sum of state doses will not add to national total as some records are unable to be geocoded to a State or Territory. Doses sourced from Australian Immunisation Register, population from ABS ERP June 2020

Aboriginal and Torres Strait Islander peoples

Number of people vaccinated

Data as at:
21 Dec 2021
Updated weekly

Australia's COVID-19
Vaccine Roadmap



412,913

people over the age of 16
have had at least one dose

78.3%

of people over the age of 16
have had at least one dose



369,582

people over the age of 16
are fully vaccinated

70.1%

of people over the age of 16 are
fully vaccinated



**42,130
(58.9%)**

people aged 12-15 years
have had at least one dose

173 Aboriginal community controlled health services (ACCHS)

0#	50	27	41	12	3	21	19
ACT	NSW	NT	QLD	SA	TAS	VIC	WA

Medicare Address State ^{##}	Individuals Dose 1	Individuals Dose 1 %	Individuals Dose 2	Individuals Dose 2 %
Australian Capital Territory	4,942	90.6%	4,779	87.6%
New South Wales	137,732	86.2%	133,475	83.5%
Northern Territory	38,978	83.7%	33,663	72.3%
Queensland	106,775	74.4%	91,675	63.9%
South Australia	18,598	73.1%	15,961	62.7%
Tasmania	14,372	84.2%	13,247	77.6%
Victoria	35,786	88.5%	34,530	85.4%
Western Australia	41,686	65.4%	31,370	49.2%
Unknown/Other Territories	14,044	55.4%	10,882	42.9%
Totals	412,913	78.3%	369,582	70.1%

Source: Australian Immunisation Register

*Identifying as Aboriginal and Torres Strait Islander is optional and the estimated population may be under reported.

**Includes all Aboriginal and Torres Strait Islander peoples who have received a vaccination, not limited to those administered in an ACCHS setting

#ACCHS in the ACT are currently operating as a Commonwealth Vaccine Clinics so not included to avoid double counting

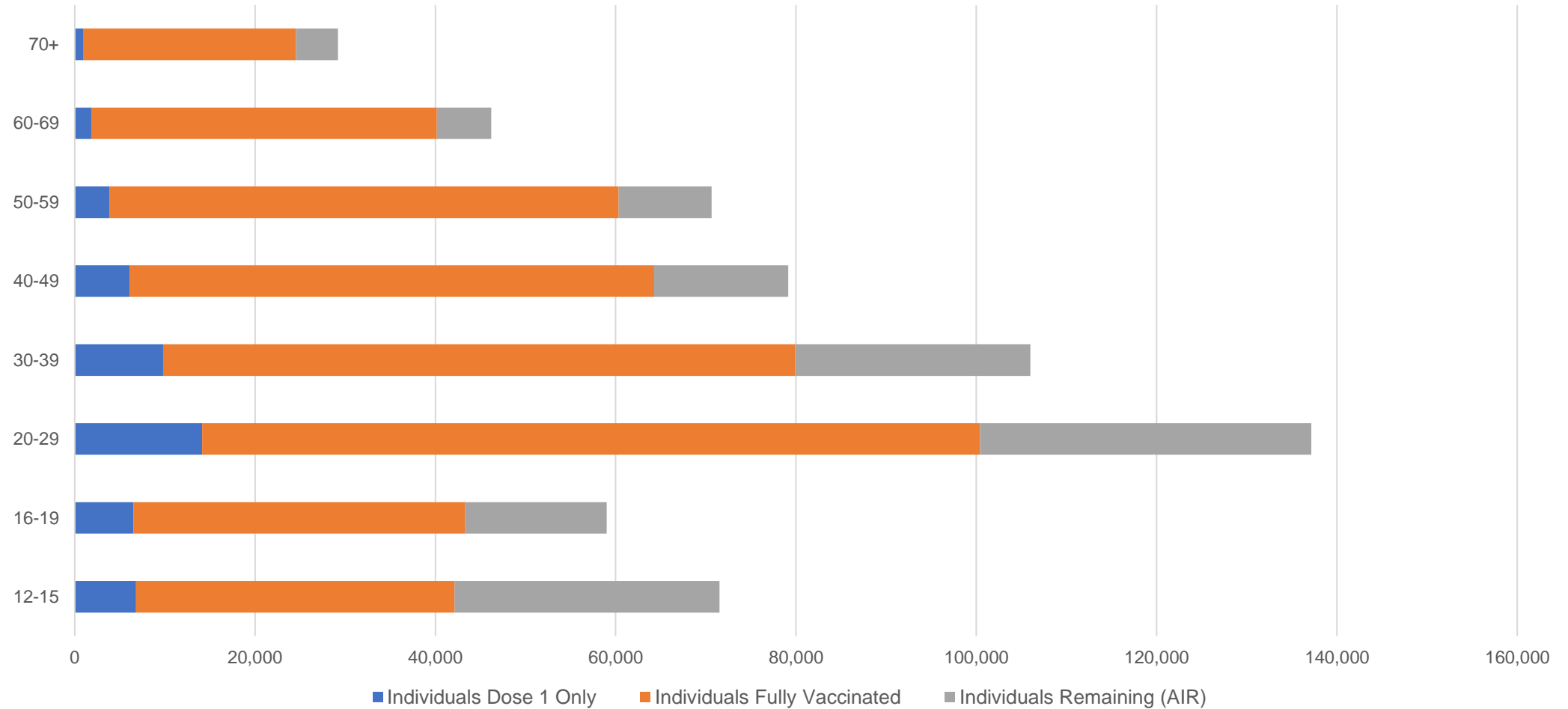
##The above table includes all identified Aboriginal and Torres Strait Islander people who are aged 16 and above by their state of residence.

Aboriginal and Torres Strait Islander peoples

Number of people vaccinated by age

Data as at:
21 Dec 2021
Updated weekly

Australia's COVID-19
Vaccine Roadmap



Source: Australian Immunisation Register

Data as at:
27 Dec 2021

Commonwealth primary care



Primary care vaccine administration sites

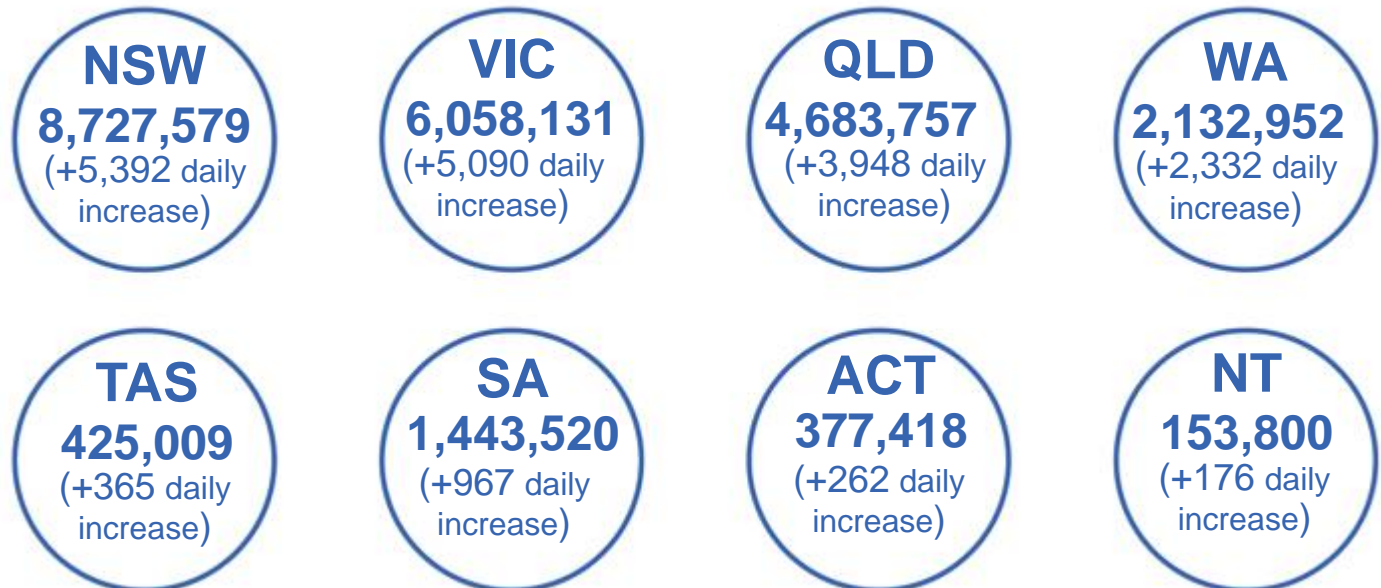
5,674	137	173	3,472
GPs	CVCs	ACCHS	Pharmacies



24,170,102 total vaccine doses administered
primary care settings as at 27 December
+ 18,535 recorded in the last 24 hours

Primary care vaccinations by provider type

	Doses administered	Daily increase	7 day increase
General Practice* includes other Commonwealth	21,121,881	7,005	323,588
Pharmacy	3,048,221	11,530	212,860



167,936 doses administered to persons residing in other territories or with missing residential information

*General practice includes Commonwealth Vaccination Clinics, Aboriginal Community Health Centres, Royal Flying Doctor Service and other Commonwealth vaccination facilities

Source: Australian Immunisation Register

Data as at:
27 Dec 2021

Commonwealth aged care and disability doses administered



1,172,867 (+ 0 last 24 hours)

Total vaccine doses administered in aged care and disability facilities as at 27 December

Number of doses administered as part of the Commonwealth aged and disability care rollout

NSW
537,654
(-2# daily increase)

VIC
218,101
(-2# daily increase)

QLD
183,095
(+6 daily increase)

WA
84,600
(-1# daily increase)

TAS
21,091
(+2 daily increase)

SA
78,143
(-1# daily increase)

ACT
15,346
(+0 daily increase)

NT
6,650
(+0 daily increase)

28,187

doses administered to persons residing in other territories or with missing residential information

Source: Australian Immunisation Register

*Sourced from the Australian Immunisation Register. Includes all persons vaccinated at participating residential aged care, disability and related industry settings.

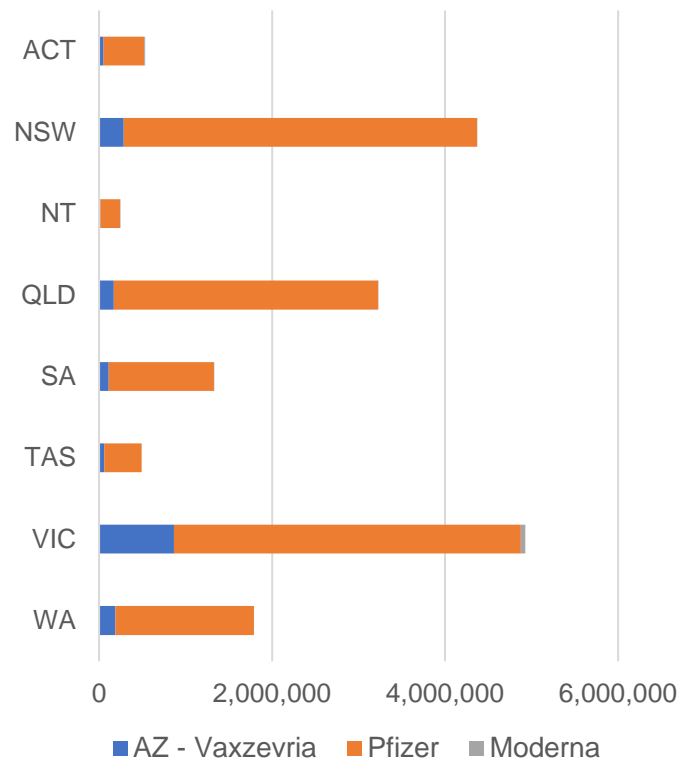
**State level breakdown indicates the residential location and may not align to the state in which the vaccination occurred.

#Numbers are calculated as difference in daily cumulative reported numbers to allow for historical corrections in all data sources. This can occasionally result in negative numbers, such as for NSW, VIC, WA and SA, where historical details about doses have been updated.

Data as at:
27 Dec 2021

Jurisdiction administered

Total vaccine doses administered in State and Territory clinics as at 27 December



16,909,258 total vaccine doses administered in State and Territory clinics as at 27 December
 + **12,624** recorded in the last 24 hours
 + **249,140** recorded in the last 7 days

NSW
4,372,505
 (+2,527 daily increase)

VIC
4,928,925
 (+531 daily increase)

QLD
3,225,179
 (+5 daily increase)

WA
1,789,907
 (+6,211 daily increase)

TAS
491,641
 (+0 daily increase)

SA
1,326,144
 (+2,987 daily increase)

ACT
530,192
 (+229 daily increase)

NT
244,765
 (+134 daily increase)

*Sourced from the Australian Immunisation Register and self-reported data. Numbers are calculated as difference in daily cumulative reported numbers to allow for historical corrections in all self-reported data sources.

Source: Australian Immunisation Register