



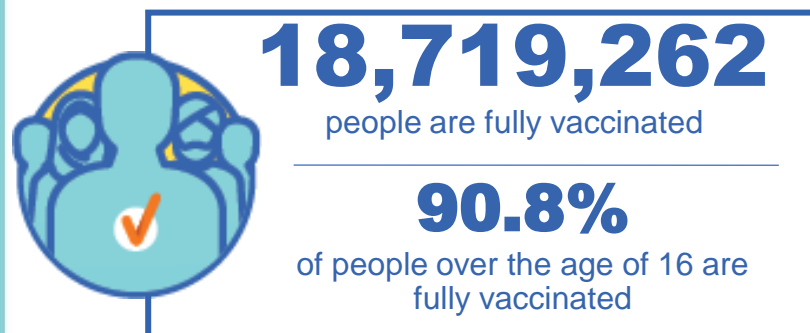
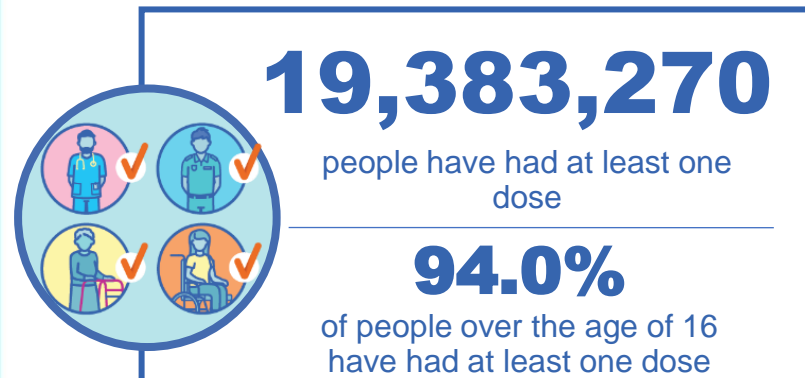
Australian Government
Operation COVID Shield

COVID-19 Vaccine Roll-out

22 December 2021

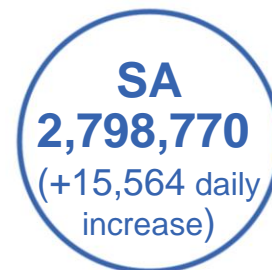
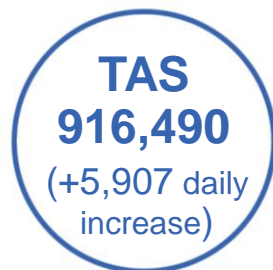
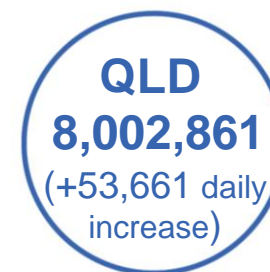
Data as at:
21 Dec 2021

Total vaccine doses



41,667,960 total vaccine doses administered nationally as at 21 December

+207,329 recorded in the last 24 hours



*Administration state breakdown indicates state in which a vaccine was administered

**Overall dose count includes instances of more than two doses per person in a small number of cases.

Source: Australian Immunisation Register

Data as at:
21 Dec 2021

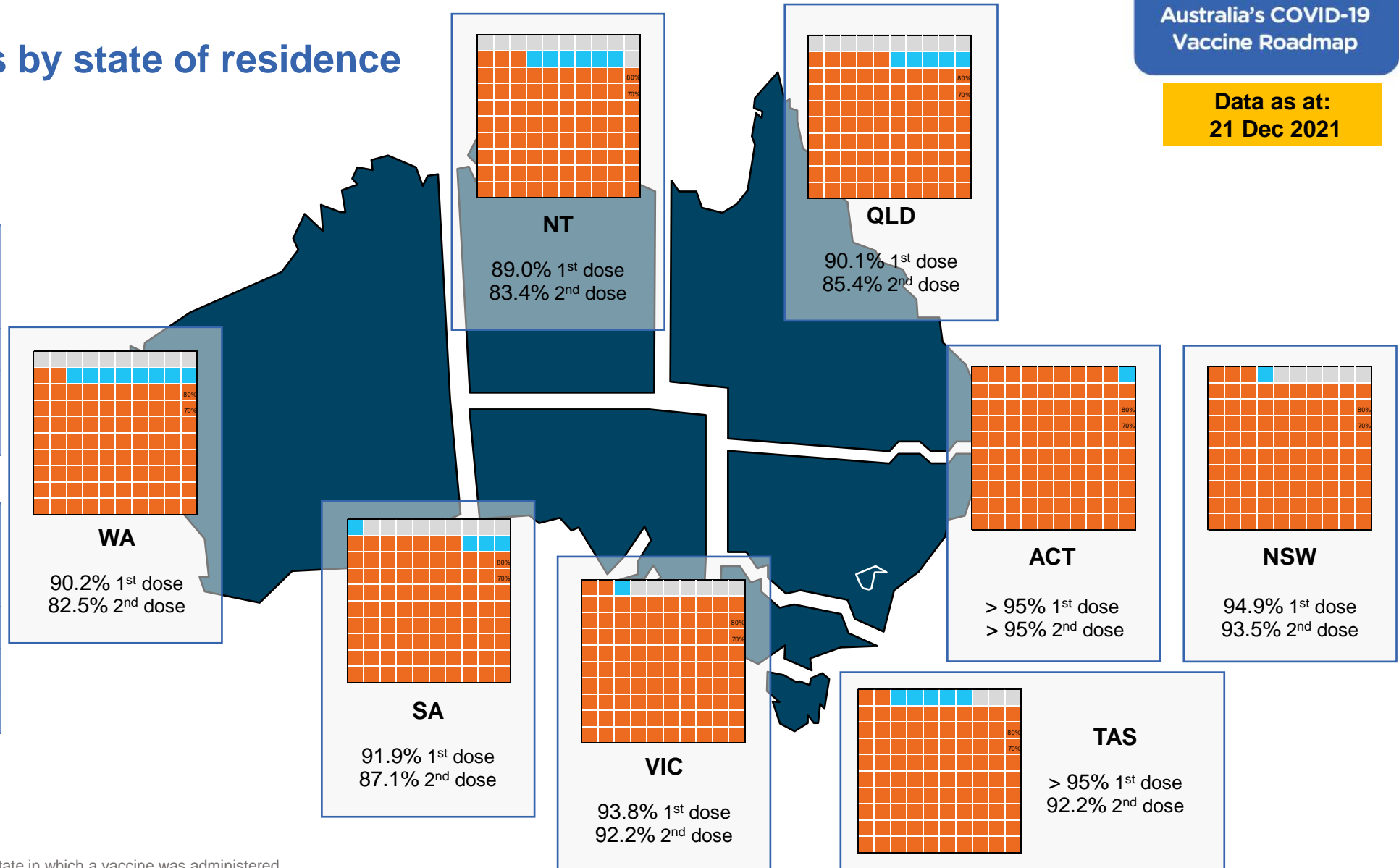
Vaccinations by state of residence

First doses

Age	Today	4 weeks ago	8 weeks ago
16+	94.0%	92.1%	87.8%
50+	95%	>95%	>95%
70+	95>%	>95%	>95%

Fully vaccinated

Age	Today	4 weeks ago	8 weeks ago
16+	90.8%	86.2%	75.7%
50+	>95%	93.2%	85.3%
70+	>95%	>95%	90.4%



*Residential state may differ from the state in which a vaccine was administered

Commonwealth and Jurisdiction vaccine doses administered

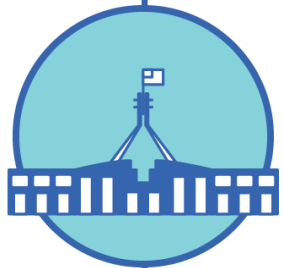
Data as at:
21 Dec 2021



41,667,960 total vaccine
doses administered nationally as at 21 December
+ 207,329 recorded in the last 24 hours



16,721,506
doses administered by state
and territory facilities
+ 61,388
recorded in the last 24 hours



24,946,454
doses administered by
commonwealth facilities
+ 145,941
recorded in the last 24 hours
23,778,307 total vaccine doses
administered in primary care settings
1,168,147 total vaccine doses
administered in aged care and disability
settings

NSW	Jurisdictions	Commonwealth
Cumulative	4,327,083	9,117,446
Daily increase	11,305	43,779

VIC	Jurisdictions	Commonwealth
Cumulative	4,896,563	6,227,995
Daily increase	16,575	31,004

QLD	Jurisdictions	Commonwealth
Cumulative	3,177,920	4,824,941
Daily increase	13,972	39,689

WA	Jurisdictions	Commonwealth
Cumulative	1,763,476	2,187,578
Daily increase	6,536	15,276

TAS	Jurisdictions	Commonwealth
Cumulative	486,076	430,414
Daily increase	2,092	3,815

SA	Jurisdictions	Commonwealth
Cumulative	1,309,307	1,489,463
Daily increase	6,464	9,100

ACT	Jurisdictions	Commonwealth
Cumulative	519,793	497,751
Daily increase	3,358	2,299

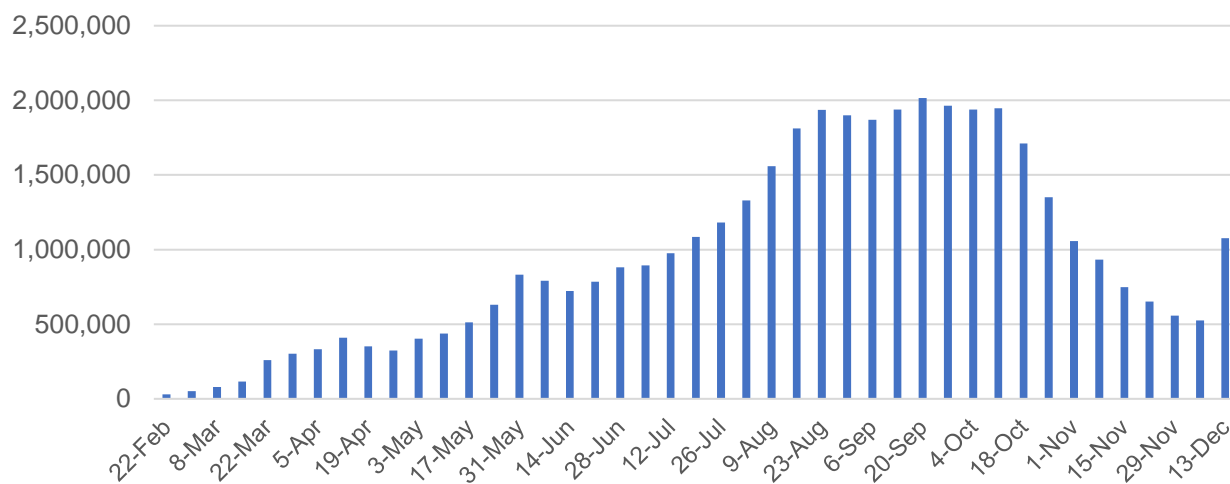
NT	Jurisdictions	Commonwealth
Cumulative	241,288	170,866
Daily increase	1,086	979

Vaccine milestone charts

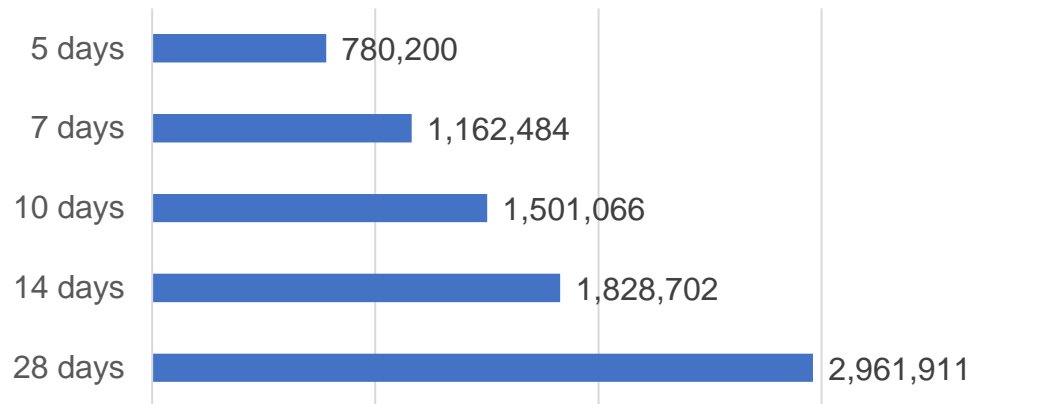
Data as at:
21 Dec 2021

Australia's COVID-19
Vaccine Roadmap

Doses Administered by Week

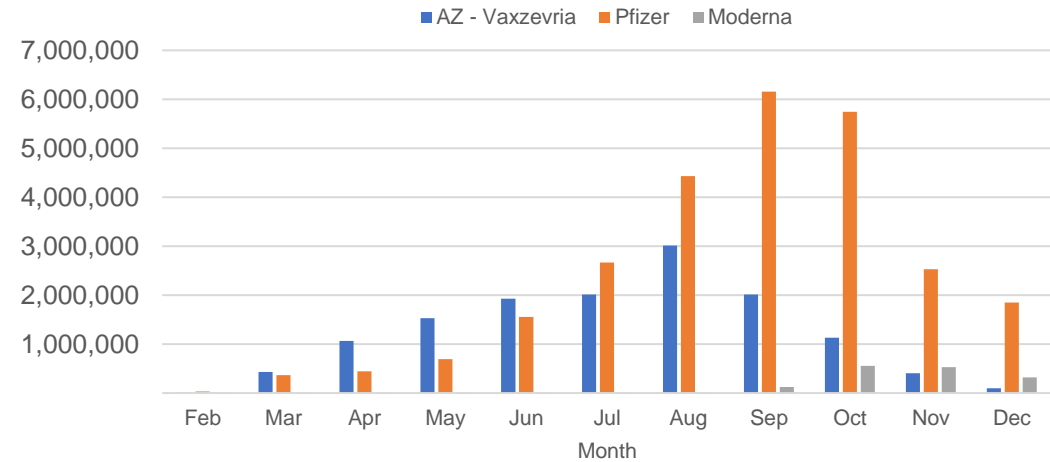


Doses Reported

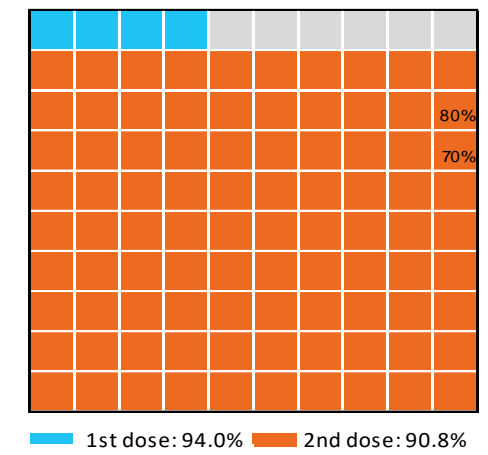


*Sourced from the Australian Immunisation Register.

Doses by administration month and vaccine type



Eligible population percentage coverage



*Each square represents 1% of the national population. Squares are filled as milestones are achieved.

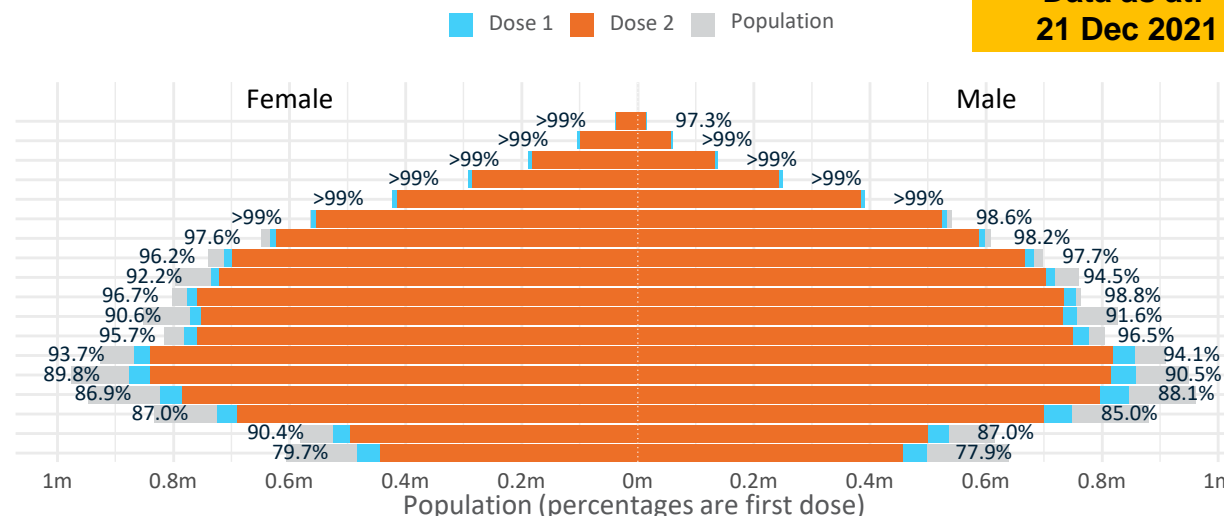
Doses by age and sex

First and second doses by age and sex

Australia's COVID-19
Vaccine Roadmap

Data as at:
21 Dec 2021

Age	Dose 1	Dose 2
95+	53,948 (>99%)	50,120 (94.7%)
90-94	164,325 (>99%)	156,697 (98.9%)
85-89	325,466 (>99%)	314,574 (>99%)
80-84	541,457 (>99%)	528,867 (>99%)
75-79	813,066 (>99%)	798,359 (>99%)
70-74	1,095,963 (>99%)	1,077,893 (97.5%)
65-69	1,233,058 (98.0%)	1,211,308 (96.3%)
60-64	1,394,570 (97.1%)	1,366,914 (95.1%)
55-59	1,453,060 (93.4%)	1,423,144 (91.5%)
50-54	1,530,811 (97.8%)	1,493,880 (95.5%)
45-49	1,528,574 (91.2%)	1,486,105 (88.6%)
40-44	1,559,904 (96.3%)	1,508,981 (93.1%)
35-39	1,728,266 (94.2%)	1,661,172 (90.5%)
30-34	1,742,594 (90.6%)	1,661,258 (86.4%)
25-29	1,678,935 (88.1%)	1,588,975 (83.3%)
20-24	1,478,563 (86.3%)	1,394,593 (81.4%)
16-19	1,060,710 (88.7%)	996,422 (83.3%)
12-15	980,536 (78.8%)	901,046 (72.4%)



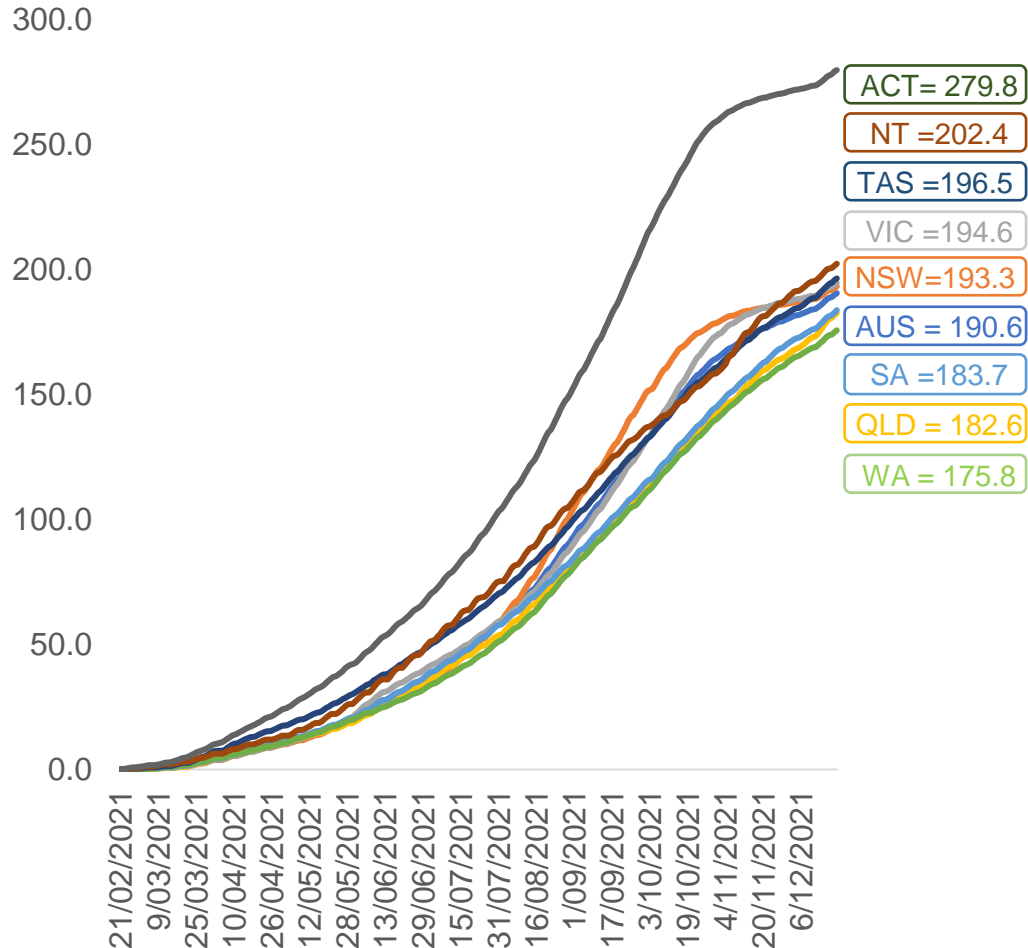
	AUS	ACT	NSW	NT	QLD	SA	TAS	VIC	WA
16 and over - dose 1	19,383,270	346,928	6,232,433	169,569	3,705,688	1,323,460	428,107	5,070,073	1,907,355
16 and over - dose 2	18,719,262	341,866	6,136,698	158,943	3,510,563	1,255,265	405,697	4,988,019	1,745,288
16 and over - population	20,619,959*	344,037	6,565,651	190,571	4,112,707	1,440,400	440,172	5,407,574	2,114,978
16 and over % with dose 1	94.00%	>99%	94.92%	88.98%	90.10%	91.88%	97.26%	93.76%	90.18%
16 and over % with dose 2	90.78%	>99%	93.47%	83.40%	85.36%	87.15%	92.17%	92.24%	82.52%
50 and over - dose 1	8,605,724	134,325	2,778,729	56,582	1,685,014	652,070	215,167	2,179,811	849,464
50 and over - dose 2	8,421,756	132,730	2,745,892	54,585	1,636,667	630,937	208,926	2,150,890	812,184
50 and over - population	8,749,703	127,802	2,807,793	62,280	1,758,855	674,384	220,036	2,211,211	885,370
50 and over % with dose 1	98.35%	>99%	98.96%	90.85%	95.80%	96.69%	97.79%	98.58%	95.94%
50 and over % with dose 2	96.25%	>99%	97.80%	87.64%	93.05%	93.56%	94.95%	97.27%	91.73%
70 and over - dose 1	2,994,225	43,843	983,515	11,650	578,275	243,847	78,970	753,042	279,916
70 and over - dose 2	2,926,510	43,168	968,385	11,225	562,719	235,831	76,539	740,254	269,549
70 and over - population	2,934,706	39,946	962,606	12,343	577,767	240,514	77,155	743,519	280,281
70 and over % with dose 1	>99%	>99%	>99%	94.39%	>99%	>99%	>99%	>99%	>99%
70 and over % with dose 2	>99%	>99%	>99%	90.94%	97.40%	98.05%	>99%	>99%	96.17%
12 to 15 - dose 1	980,536	19,776	318,230	9,913	187,200	61,119	20,520	271,761	84,806
12 to 15 - dose 2	901,046	19,122	305,196	8,461	165,188	53,471	18,176	256,658	68,842
12 to 15 - population	1,243,990	19,693	390,330	13,060	270,146	82,747	26,308	308,611	132,869
12 to 15 % with dose 1	78.82%	>99%	81.53%	75.90%	69.30%	73.86%	78.00%	88.06%	63.83%
12 to 15 % with dose 2	72.43%	97.10%	78.19%	64.79%	61.15%	64.62%	69.09%	83.17%	51.81%

*National population will not equal sum of listed jurisdictions due to a small number of people counted in national population residing in some 'other' territories. Sum of state doses will not add to national total as some records are unable to be geocoded to a State or Territory.

Doses sourced from Australian Immunisation Register, population from ABS ERP June 2020

Vaccinations by location

Cumulative total doses administered vs eligible state populations*

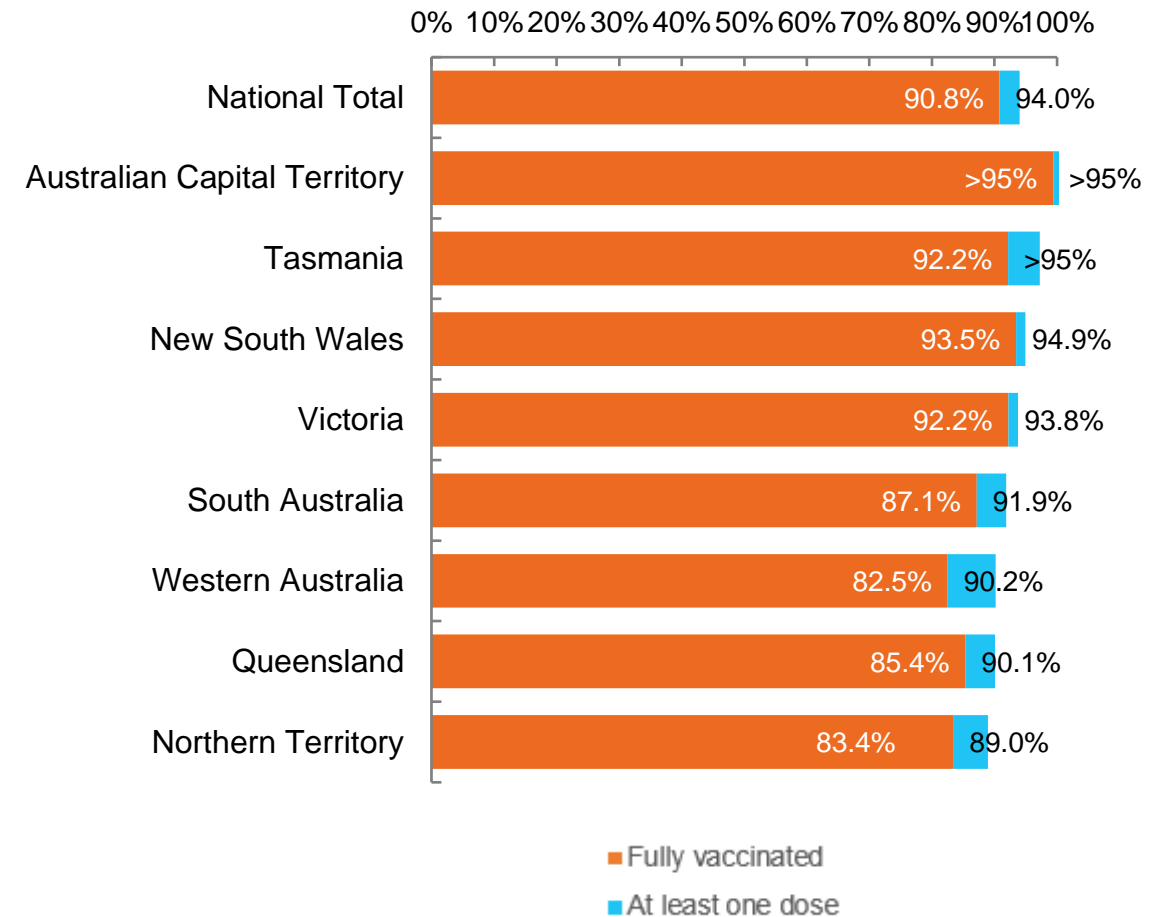


*Not an indication of percentage vaccinated, numbers will exceed 100 due to multiple doses required per person of the population. All doses are included, including those for the 12-15 cohort, and are based on vaccination provider location.

Data as at:
21 Dec 2021

Australia's COVID-19
Vaccine Roadmap

First and Second Doses by state of residence



Aboriginal and Torres Strait Islander peoples

Number of people vaccinated

Data as at:
21 Dec 2021
Updated weekly

Australia's COVID-19
Vaccine Roadmap



412,913

people over the age of 16
have had at least one dose

78.3%

of people over the age of 16
have had at least one dose



369,582

people over the age of 16
are fully vaccinated

70.1%

of people over the age of 16 are
fully vaccinated



**42,130
(58.9%)**

people aged 12-15 years
have had at least one dose

173 Aboriginal community controlled health services (ACCHS)

0#	50	27	41	12	3	21	19
ACT	NSW	NT	QLD	SA	TAS	VIC	WA

Medicare Address State ^{##}	Individuals Dose 1	Individuals Dose 1 %	Individuals Dose 2	Individuals Dose 2 %
Australian Capital Territory	4,942	90.6%	4,779	87.6%
New South Wales	137,732	86.2%	133,475	83.5%
Northern Territory	38,978	83.7%	33,663	72.3%
Queensland	106,775	74.4%	91,675	63.9%
South Australia	18,598	73.1%	15,961	62.7%
Tasmania	14,372	84.2%	13,247	77.6%
Victoria	35,786	88.5%	34,530	85.4%
Western Australia	41,686	65.4%	31,370	49.2%
Unknown/Other Territories	14,044	55.4%	10,882	42.9%
Totals	412,913	78.3%	369,582	70.1%

Source: Australian Immunisation Register

*Identifying as Aboriginal and Torres Strait Islander is optional and the estimated population may be under reported.

**Includes all Aboriginal and Torres Strait Islander peoples who have received a vaccination, not limited to those administered in an ACCHS setting

#ACCHS in the ACT are currently operating as a Commonwealth Vaccine Clinics so not included to avoid double counting

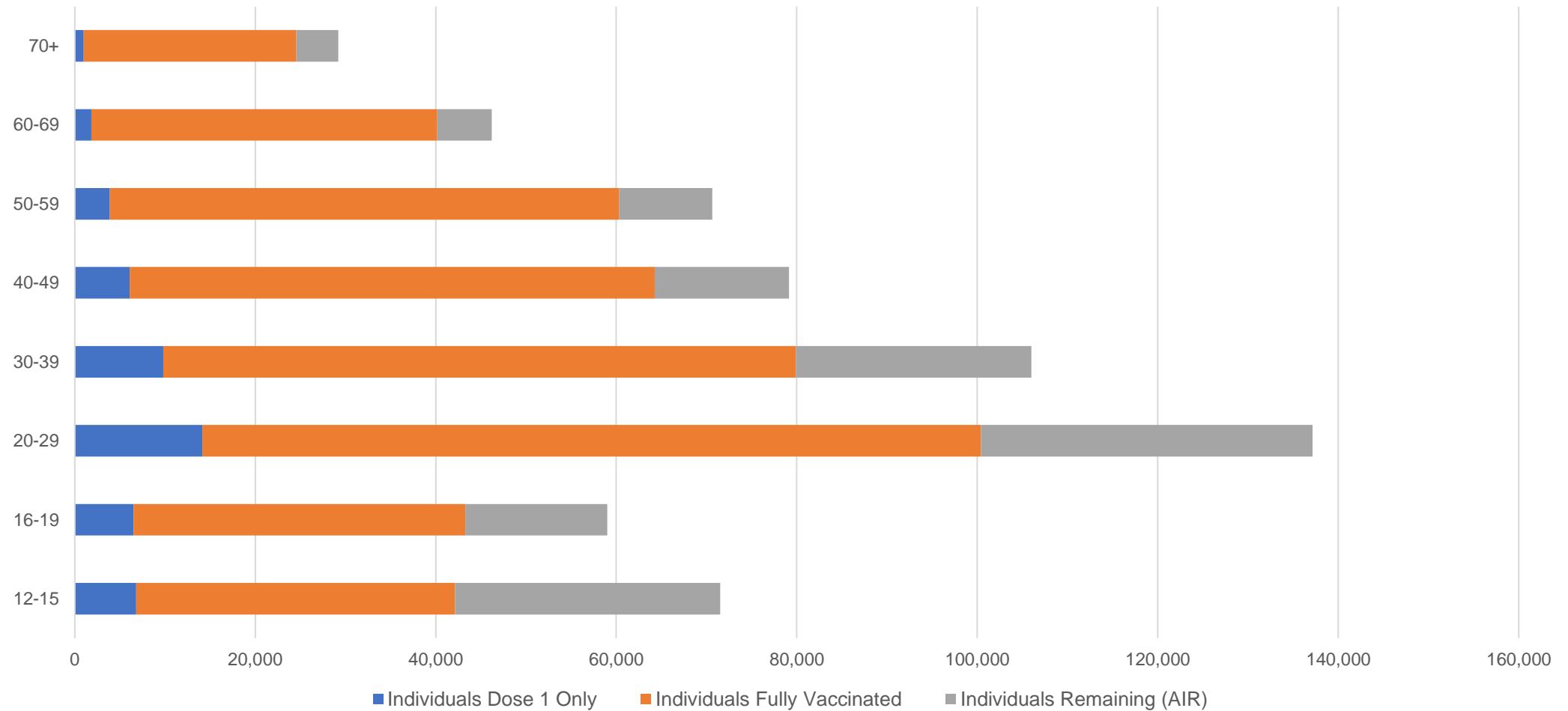
##The above table includes all identified Aboriginal and Torres Strait Islander people who are aged 16 and above by their state of residence.

Aboriginal and Torres Strait Islander peoples

Number of people vaccinated by age

Data as at:
21 Dec 2021
Updated weekly

Australia's COVID-19
Vaccine Roadmap



Source: Australian Immunisation Register

Data as at:
21 Dec 2021

Commonwealth primary care



Primary care vaccine administration sites

5,668	137	173	3,464
GPs	CVCs	ACCHS	Pharmacies



23,778,307 total vaccine doses administered
primary care settings as at 21 December
+ 144,653 recorded in the last 24 hours

Primary care vaccinations by provider type

	Doses administered	Daily increase	7 day increase
General Practice* includes other Commonwealth	20,888,561	90,268	491,141
Pharmacy	2,889,746	54,385	284,559

NSW
8,610,123
(+43,570 daily increase)

VIC
5,970,445
(+30,606 daily increase)

QLD
4,589,066
(+39,543 daily increase)

WA
2,088,543
(+15,067 daily increase)

TAS
415,919
(+3,856 daily increase)

SA
1,420,194
(+9,123 daily increase)

ACT
371,958
(+2,254 daily increase)

NT
151,394
(+986 daily increase)

160,665 doses administered to persons
residing in other territories or with
missing residential information

*General practice includes Commonwealth Vaccination Clinics, Aboriginal Community Health Centres, Royal Flying Doctor Service and other Commonwealth vaccination facilities

Source: Australian Immunisation Register

Data as at:
21 Dec 2021

Commonwealth aged care and disability doses administered



1,168,147 (+ 1,288 last 24 hours)

Total vaccine doses administered in aged care and disability facilities as at 21 December

Number of doses administered as part of the Commonwealth aged and disability care rollout

NSW
535,024
(+586 daily increase)

VIC
217,788
(+324 daily increase)

QLD
182,804
(+361 daily increase)

WA
83,459
(+65 daily increase)

TAS
21,086
(+3 daily increase)

SA
78,132
(+3 daily increase)

ACT
15,347
(+4 daily increase)

NT
6,641
(+0 daily increase)

27,866

doses administered to persons
residing in other territories or with
missing residential information

*Sourced from the Australian Immunisation Register. Includes all persons vaccinated at participating residential aged care, disability and related industry settings.

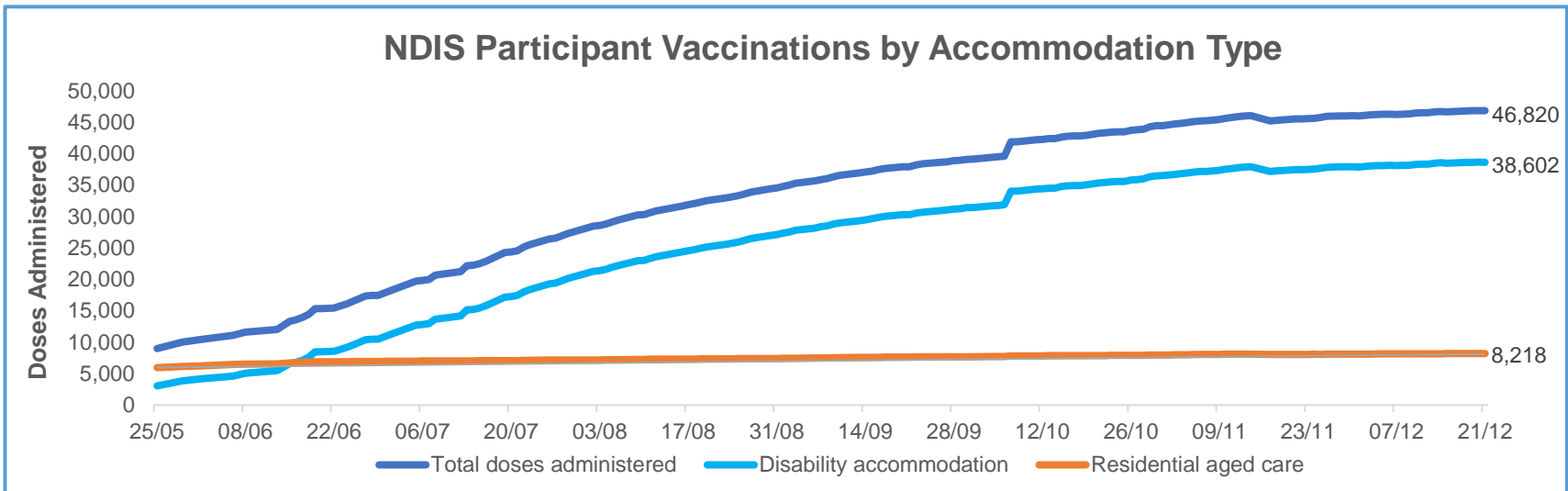
**State level breakdown indicates the residential location and may not align to the state in which the vaccination occurred.

Source: Australian Immunisation Register

Data as at:
21 Dec 2021*

Vaccination rate of people with disability and the disability workforce

Phase 1a – People with disability living in shared accommodation



	Total people with at least one dose	People fully vaccinated	Total number of individuals in cohort	Total doses administered	% People with at least one dose	% People fully vaccinated
NDIS participants living in shared accommodation **	23,793	23,027	27,603	46,820	86.2%	83.4%
NDIS screened workers ***	237,143	231,474	267,670	468,617	88.6%	86.5%



* Updates are available Monday to Friday on participants, and bi-weekly for workers, numbers may be up to four days old.

** Shared accommodation means two or more people with disability living in shared residential accommodation and NDIS participants living in Residential Aged Care accommodation as per the eligibility criteria of Phase 1a. The number of residents changes over time and refinement of methodology can lead to corrections in totals.

*** Total number of workers within the NDIS Commission Worker Screening database who have ever been successfully screened and linked to an NDIS registered provider or participant.

Source: Linkage between National Disability Insurance Agency data, NDIS Quality and Safeguards Commission data and the Australian Immunisation Register.

Residential aged care vaccination rollout

Residential aged care facilities status

100% Commonwealth facilities visited (2,591 planned sites)

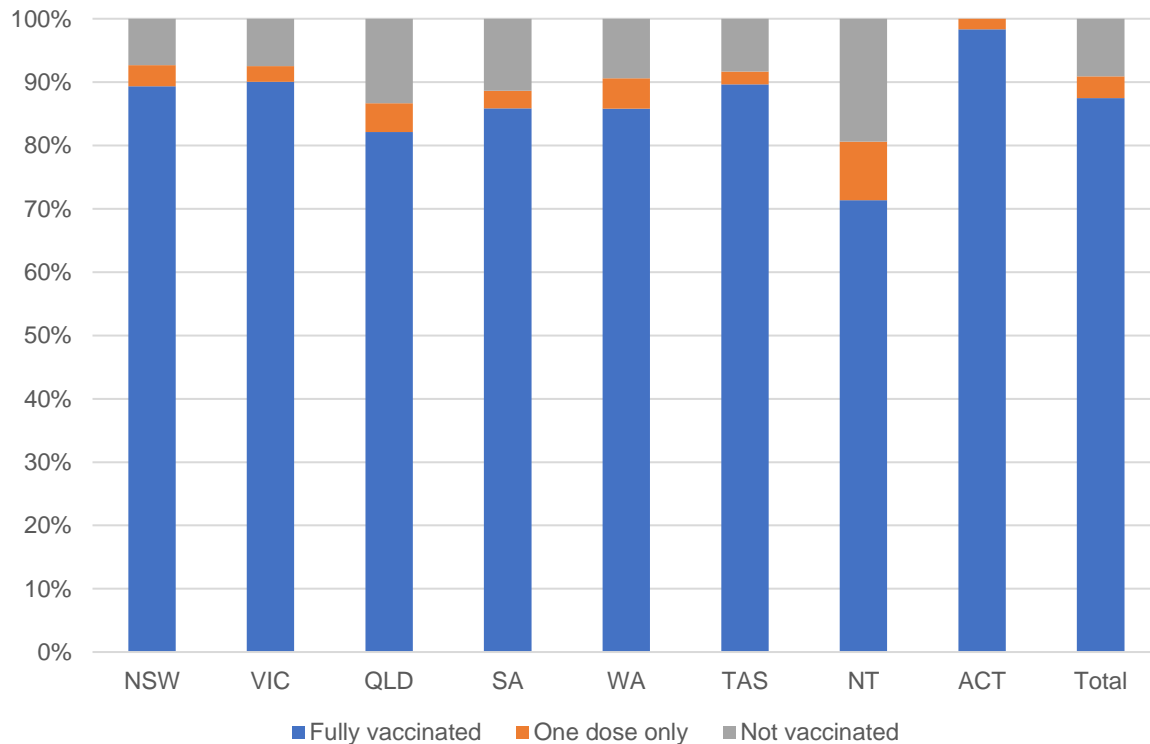
163,171 People fully vaccinated

169,621 People with at least one dose

Australia's COVID-19 Vaccine Roadmap

Data as at:
21 Dec 2021

Aged care resident vaccinations



Aged care worker vaccinations

Jurisdictions	Total workers with at least one dose	Workers fully vaccinated	% Workers with at least one dose	% Workers fully vaccinated
NSW	79,232	79,189	99.5%	99.5%
VIC	70,827	70,801	99.2%	99.2%
QLD	48,425	48,373	98.8%	98.7%
SA	27,655	27,500	100.0%	99.4%
WA	23,752	23,664	99.8%	99.4%
TAS	7,605	7,534	100.0%	99.1%
NT	852	852	100.0%	100.0%
ACT	2,989	2,989	100.0%	100.0%
Total	261,337	260,902	99.4%	99.2%

Source: My Aged Care Portal staff vaccination progress

**Resident vaccination information is reported manually by service providers

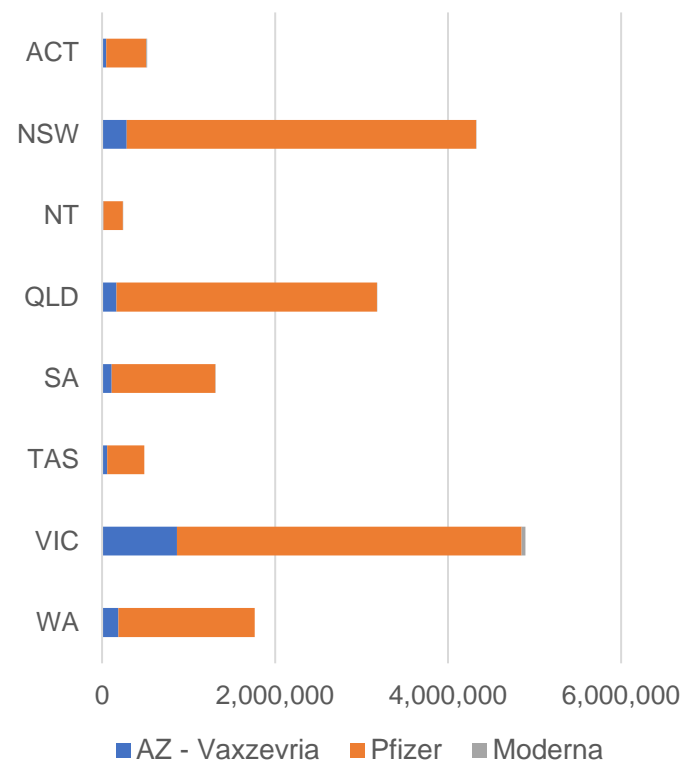
*Status updates are provided by facilities at least once per week. Reporting is updated Monday to Friday to encompass different facility updates being made on different days.

Data is sourced directly from Aged Care Service Providers and is not drawn or closely aligned with data from AIR due to inconsistencies and potential lags in uploading of records.

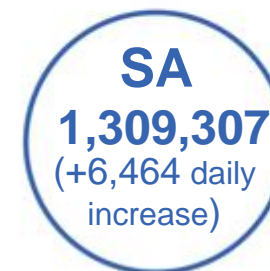
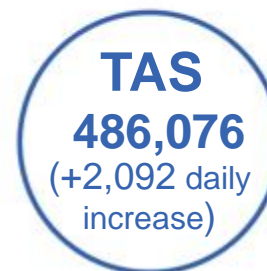
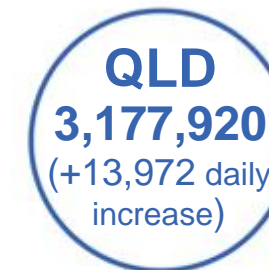
Data as at:
21 Dec 2021

Jurisdiction administered

Total vaccine doses administered in State and Territory clinics as at 21 December



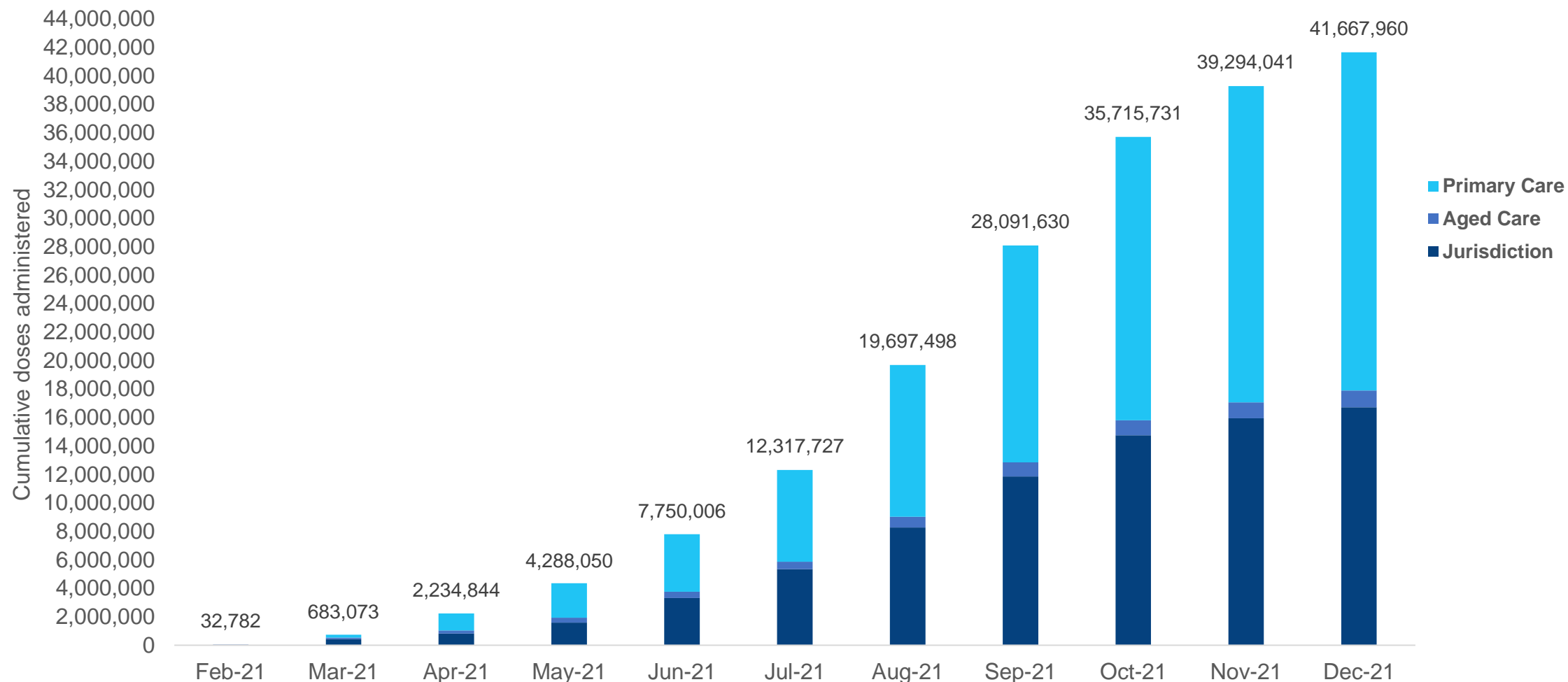
16,721,506 total vaccine doses administered
in State and Territory clinics as at 21 December
+ 61,388 recorded in the last 24 hours
+ 374,916 recorded in the last 7 days



*Sourced from the Australian Immunisation Register and self-reported data. Numbers are calculated as difference in daily cumulative reported numbers to allow for historical corrections in all self-reported data sources.

Cumulative doses administered by channel

Data as at:
21 Dec 2021



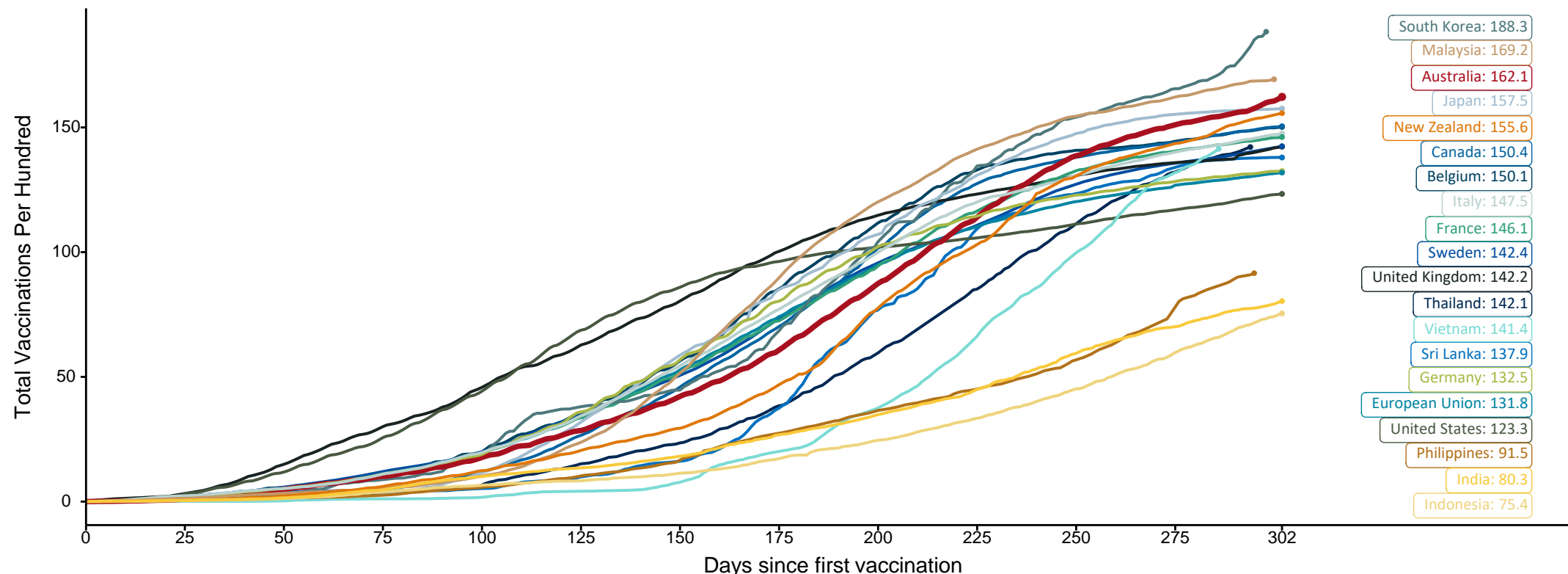
Source: Australian Immunisation Register

Doses at equivalent stages of rollout (Day 302)

Data as at:
21 Dec 2021

The x-axis is truncated at the length of Australia's vaccination program. Countries with intermittent reporting have had their doses per 100 imputed to Australia's current stage of rollout. Israel excluded as it is beyond scale of the graph

Cumulative doses administered (21 Dec): **41,667,960**

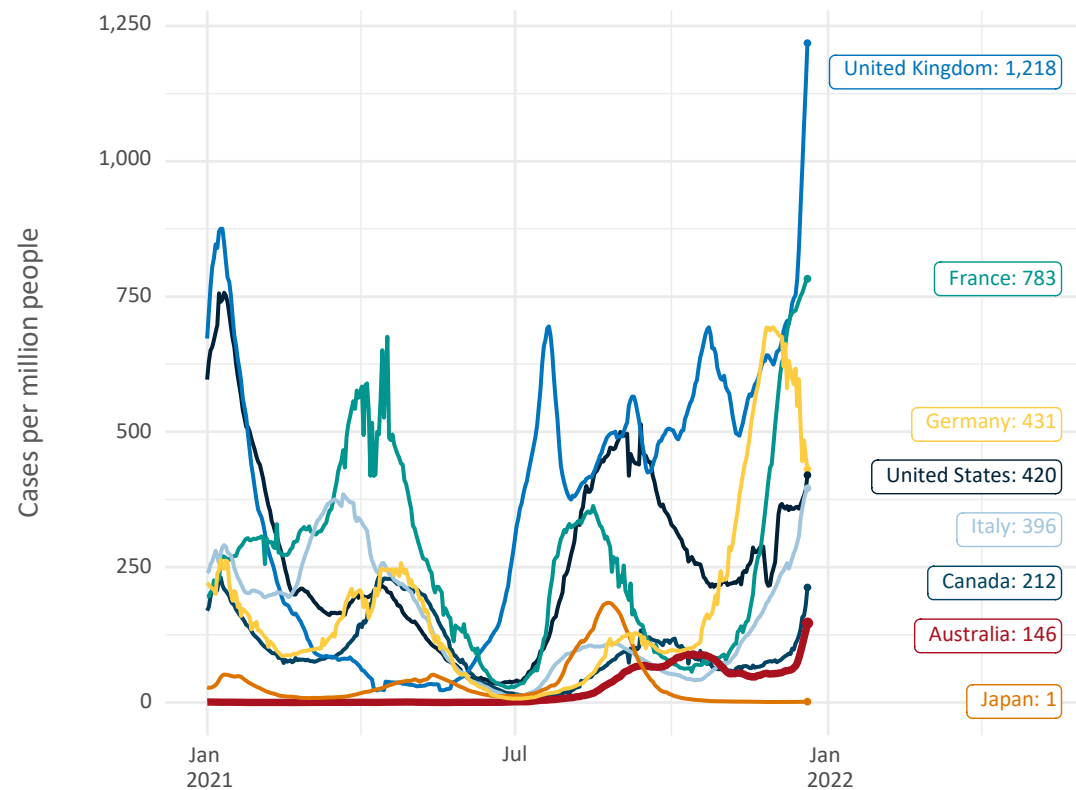


Note: From 15 September 2021, data for Australia includes all doses administered to people 12 and over. Prior to 15 September, data was for 16 and over
Due to data revisions, Singapore has been removed from the chart
Source: Department of Health (Australia), Our World in Data (international)
Latest data: 21 December

International data – COVID-19

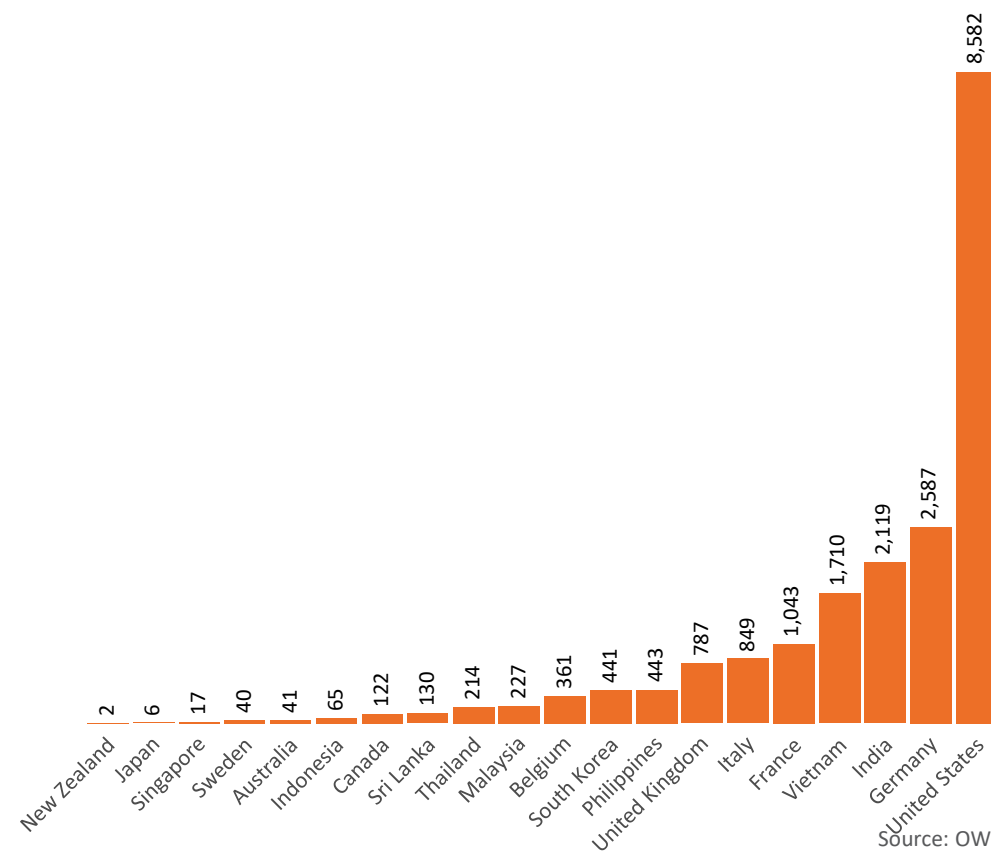
Data as at:
21 Dec 2021

New daily cases per million in 2021, Australia and G7 countries
Smoothed - 7 day average



Source: OWID
Data downloaded: 22 Dec 2021 07:41
Latest data: 20 Dec 2021

COVID-19 deaths in past 7 days - Australia and select countries



Source: OWID
Data downloaded: 22 Dec 2021 07:41
Latest data: 20 Dec 2021

Pandemic Response Payments

Australia's COVID-19
Vaccine Roadmap

Data as at midnight:
19 Dec 2021



COVID Disaster Payment:	5.89 million claims received - 2.19 million individuals paid a total of \$12.59 billion.
\$200 Income Support Payment:	353,000 claims received - 183,000 individuals paid a total of \$268.89 million.
Pandemic Leave Disaster Payment:	158,000 claims received - 135,000 individuals paid a total of \$218.58 million.



COVID Disaster Payment

assisting during a lockdown
event in a Commonwealth
hotspot.

Income Support Payment \$200

for income support
recipients who lost at
least 8 hours of work.

Pandemic Leave Disaster Payment

for those who have to
self-isolate, quarantine
or care.

For more information visit:
servicesaustralia.gov.au

COVID-19 DISASTER PAYMENTS

Victoria

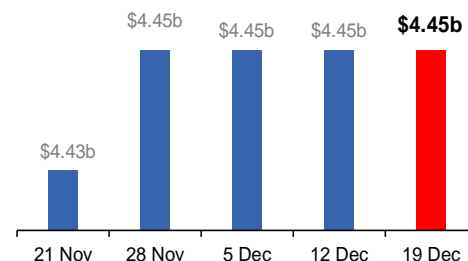
Lockdown (#6) since 6 Aug to 28 Oct
Claiming period ends 9 Dec

**745,000 people have received at least
one COVID Disaster Payment.**

\$4.45b paid out as at 19 Dec 2021.

**\$50,000 paid in initial and reoccurring
payments in the week ending
19 Dec 2021.**

Cumulative payments made by State since
activation on 8 Jun 2021.



Northern Territory

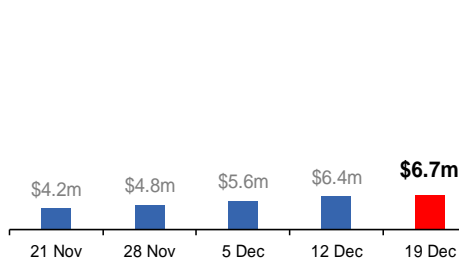
Lockdown (#3) from 16 Nov to 22 Nov
Claiming period ends 27 Dec

**7,300 people have received at least one
COVID Disaster Payment.**

\$6.7m paid out as at 19 Dec 2021.

**\$295,000 paid in initial payments in the
week ending 19 Dec 2021.**

Cumulative payments made by State since
activation on 25 Aug 2021.



New South Wales

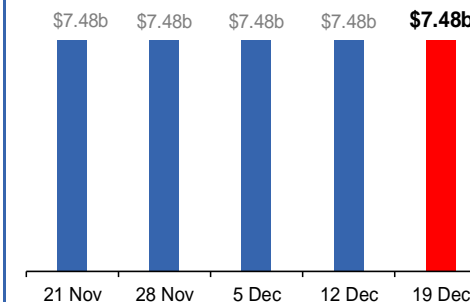
Lockdown from 24 Jun to 10 Oct
Claiming period ended 27 Nov

**1.08m people have received at least
one COVID Disaster Payment.**

\$7.48b paid out as at 19 Dec 2021.

**\$35,000 paid in initial and reoccurring
payments in the week ending
19 Dec 2021.**

Cumulative payments made by State since
activation on 1 Jul 2021.



Australian Capital Territory

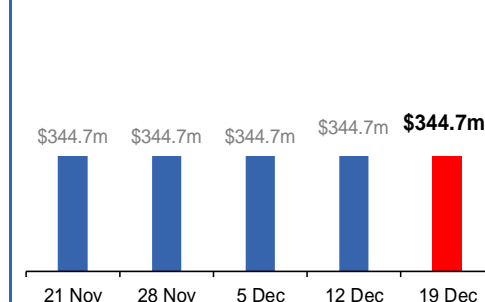
Lockdown since 12 Aug to 14 Oct
Claiming period ended 25 Nov

**65,000 people have received at least
one COVID Disaster Payment.**

\$344.7m paid out as at 19 Dec 2021.

**\$2,000 paid in initial and reoccurring
payments in the week ending
19 Dec 2021.**

Cumulative payments made by State since
activation on 20 Aug 2021.



Data as at midnight:
19 Dec 2021

Pandemic Response Payments (continued)

COVID-19 DISASTER PAYMENTS


Tasmania

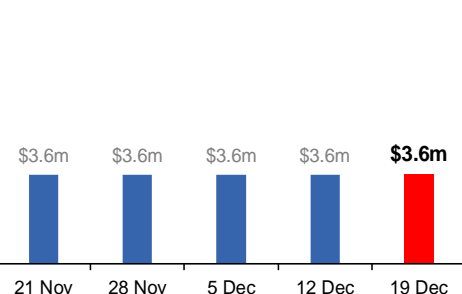
Lockdown from 15 Oct to 18 Oct
Claiming period ended 12 Nov

6,900 people have received at least one COVID Disaster Payment.

\$3.6m paid out as at 19 Dec 2021.

Nil paid in initial payments in the week ending 19 Dec 2021.

 Cumulative payments made by State since activation on 22 Oct 2021.




Queensland

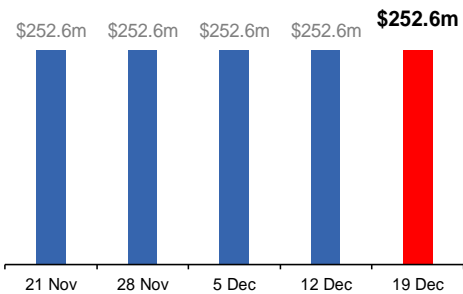
Lockdown from 31 Jul to 11 Aug
Claiming period ended 28 Aug

196,000 people have received at least one COVID Disaster Payment.

\$252.6m paid out as at 19 Dec 2021.

Nil paid in initial payments in the week ending 19 Dec 2021.

 Cumulative payments made by State since activation on 7 Aug 2021.




South Australia

Lockdown from 21 to 27 Jul
Claiming period ended 17 Aug

86,000 people have received at least one COVID Disaster Payment.

\$48.2m paid out as at 19 Dec 2021.

\$300 paid in initial and reoccurring payments in the week ending 19 Dec 2021.

 Cumulative payments made by State since activation on 28 Jul 2021.

