



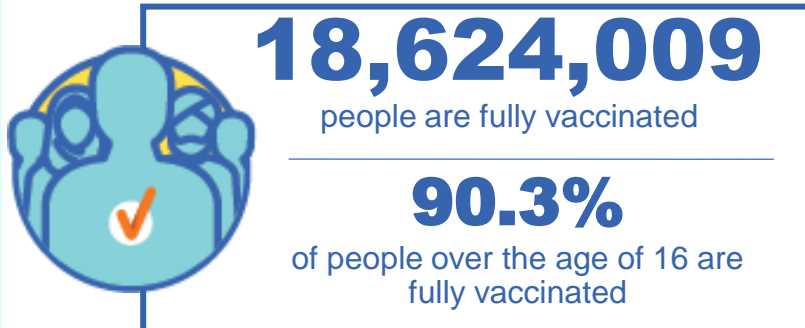
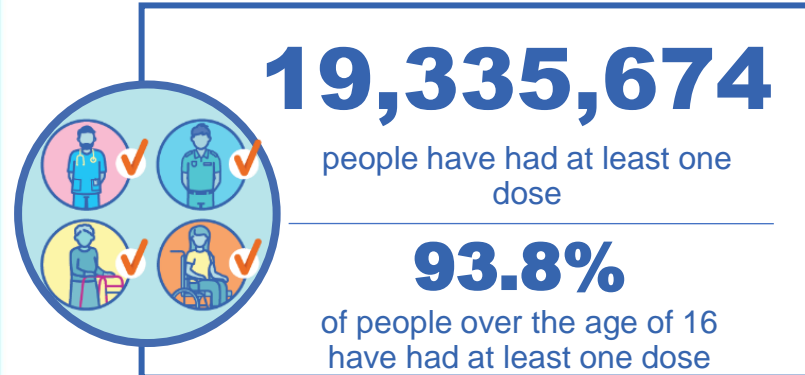
Australian Government
Operation COVID Shield

COVID-19 Vaccine Rollout

18 December 2021

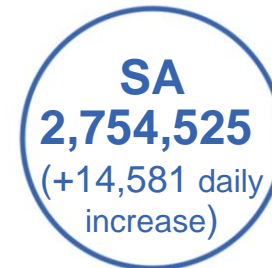
Data as at:
17 Dec 2021

Total vaccine doses



41,096,913 total vaccine doses administered nationally as at 17 December

+209,153 recorded in the last 24 hours



*Administration state breakdown indicates state in which a vaccine was administered
**Overall dose count includes instances of more than two doses per person in a small number of cases.

Source: Australian Immunisation Register

Data as at:
17 Dec 2021

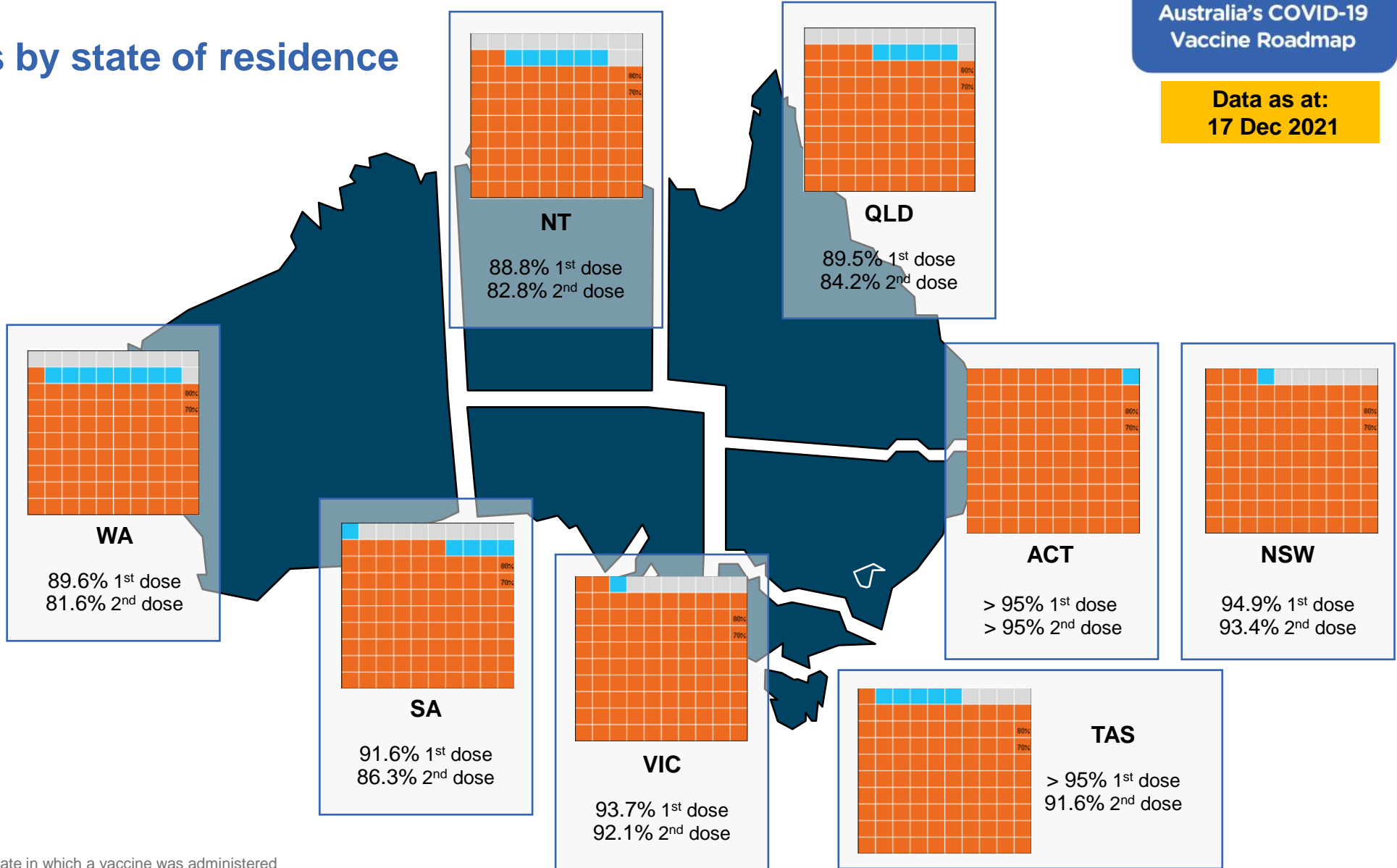
Vaccinations by state of residence

First doses

Age	Today	4 weeks ago	8 weeks ago
16+	93.8%	91.6%	87.0%
50+	>95%	>95%	94.8%
70+	>95%	>95%	>95%

Fully vaccinated

Age	Today	4 weeks ago	8 weeks ago
16+	90.3%	85.3%	73.4%
50+	>95%	92.6%	83.8%
70+	>95%	>95%	89.3%



*Residential state may differ from the state in which a vaccine was administered

Commonwealth and Jurisdiction vaccine doses administered

Data as at:
17 Dec 2021



41,096,913 total vaccine doses administered nationally as at 17 December

+ 209,153 recorded in the last 24 hours

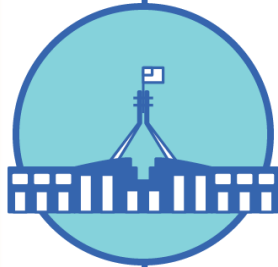


16,517,753

doses administered by state and territory facilities

+ 59,464

recorded in the last 24 hours



24,579,160

doses administered by commonwealth facilities

+ 149,689

recorded in the last 24 hours

23,413,371 total vaccine doses administered in primary care settings

1,165,789 total vaccine doses administered in aged care and disability settings

NSW	Jurisdictions	Commonwealth
Cumulative	4,287,773	9,008,513
Daily increase	12,273	42,004

VIC	Jurisdictions	Commonwealth
Cumulative	4,853,983	6,150,212
Daily increase	11,673	30,174

QLD	Jurisdictions	Commonwealth
Cumulative	3,119,389	4,723,047
Daily increase	19,592	47,028

WA	Jurisdictions	Commonwealth
Cumulative	1,742,575	2,147,504
Daily increase	5,706	15,445

TAS	Jurisdictions	Commonwealth
Cumulative	478,487	421,635
Daily increase	1,177	3,012

SA	Jurisdictions	Commonwealth
Cumulative	1,286,868	1,467,657
Daily increase	5,768	8,813

ACT	Jurisdictions	Commonwealth
Cumulative	510,386	491,707
Daily increase	2,314	2,046

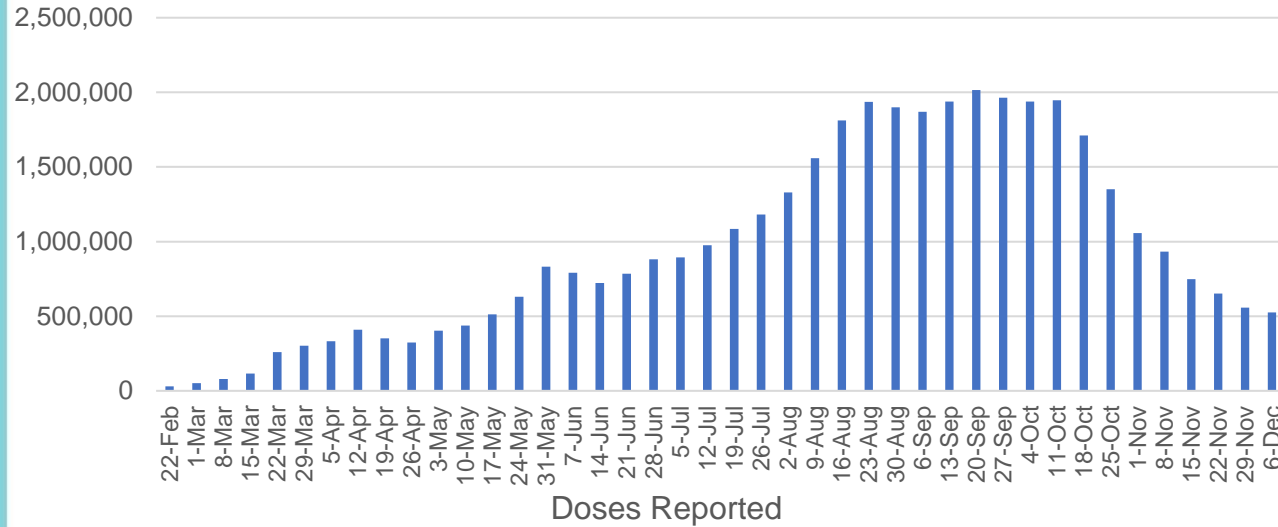
NT	Jurisdictions	Commonwealth
Cumulative	238,292	168,885
Daily increase	961	1,167

Vaccine milestone charts

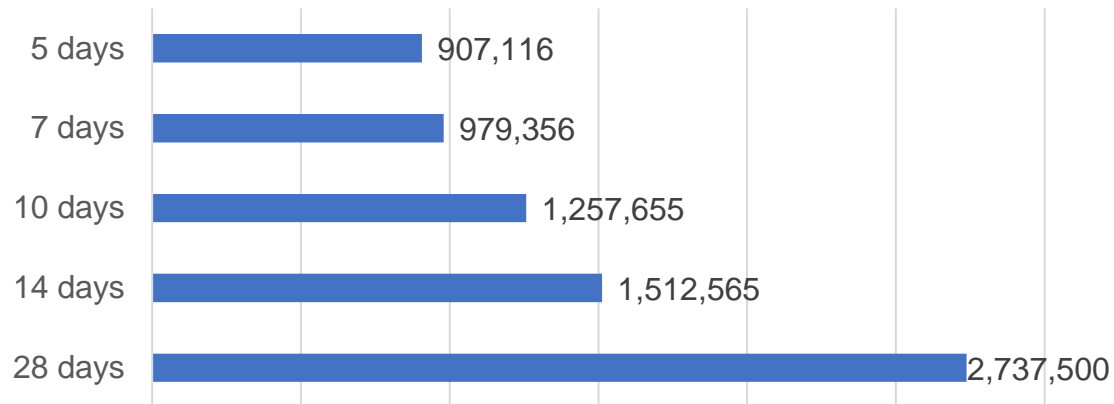
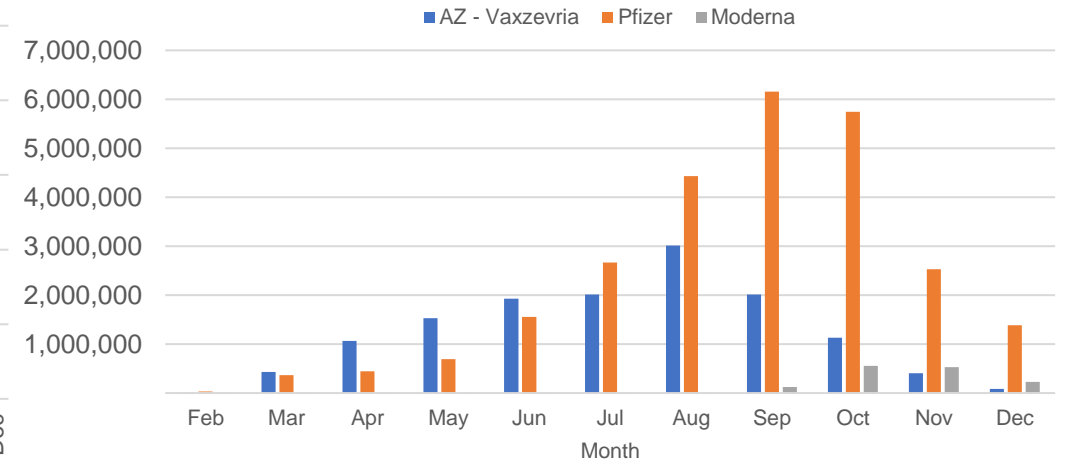
Data as at:
17 Dec 2021

Australia's COVID-19
Vaccine Roadmap

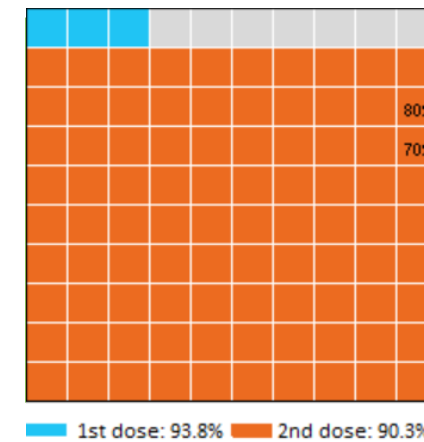
Doses Administered by Week



Doses by administration month and vaccine type



Eligible population percentage coverage



*Each square represents 1% of the national population. Squares are filled as milestones are achieved.

*Sourced from the Australian Immunisation Register.

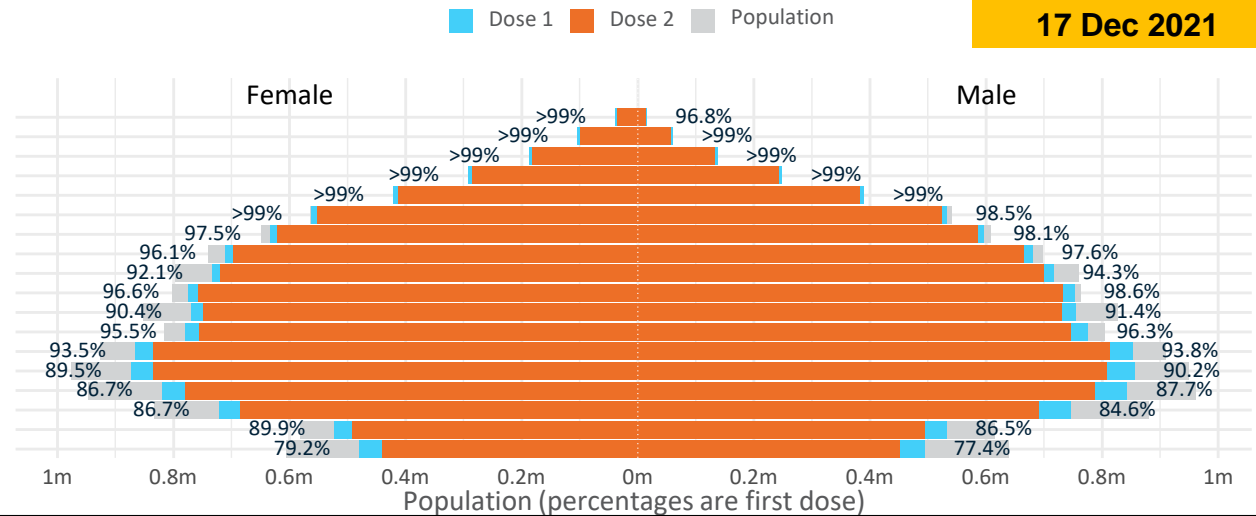
Doses by age and sex

First and second doses by age and sex

**Data as at:
17 Dec 2021**

	16+	50+	70+	12-15
Dose 1	93.77% (19,335,674 doses / 20,619,959 people)	98.21% (8,593,176 doses / 8,749,703 people)	>99% (2,989,778 doses / 2,934,706 people)	78.30% (974,037 doses / 1,243,990 people)
Dose 2	90.32% (18,624,009 doses / 20,619,959 people)	95.99% (8,398,804 doses / 8,749,703 people)	>99% (2,919,149 doses / 2,934,706 people)	71.64% (891,153 doses / 1,243,990 people)

Age	Dose 1	Dose 2
95+	53,708 (>99%)	49,816 (94.1%)
90-94	163,948 (>99%)	156,128 (98.6%)
85-89	324,730 (>99%)	313,448 (>99%)
80-84	540,730 (>99%)	527,530 (>99%)
75-79	811,389 (>99%)	795,994 (>99%)
70-74	1,095,273 (>99%)	1,076,233 (97.4%)
65-69	1,231,572 (97.9%)	1,208,383 (96.0%)
60-64	1,392,743 (96.9%)	1,363,104 (94.9%)
55-59	1,451,030 (93.3%)	1,419,407 (91.2%)
50-54	1,528,053 (97.7%)	1,488,761 (95.2%)
45-49	1,525,796 (91.0%)	1,480,323 (88.3%)
40-44	1,556,288 (96.1%)	1,501,748 (92.7%)
35-39	1,723,124 (93.9%)	1,651,227 (90.0%)
30-34	1,736,879 (90.3%)	1,649,597 (85.8%)
25-29	1,672,706 (87.7%)	1,575,681 (82.6%)
20-24	1,472,672 (86.0%)	1,381,151 (80.7%)
16-19	1,055,033 (88.2%)	985,478 (82.4%)
12-15	974,037 (78.3%)	891,153 (71.6%)



	AUS	ACT	NSW	NT	QLD	SA	TAS	VIC	WA
16 and over - dose 1	19,335,674	346,705	6,228,896	169,242	3,682,184	1,319,662	426,253	5,066,414	1,894,291
16 and over - dose 2	18,624,009	341,498	6,130,696	157,751	3,463,688	1,243,054	403,015	4,979,933	1,726,066
16 and over - population	20,619,959*	344,037	6,565,651	190,571	4,112,707	1,440,400	440,172	5,407,574	2,114,978
16 and over % with dose 1	93.77%	>99%	94.87%	88.81%	89.53%	91.62%	96.84%	93.69%	89.57%
16 and over % with dose 2	90.32%	>99%	93.38%	82.78%	84.22%	86.30%	91.56%	92.09%	81.61%
50 and over - dose 1	8,593,176	134,200	2,776,884	56,501	1,679,712	651,041	214,740	2,178,168	846,540
50 and over - dose 2	8,398,804	132,590	2,743,354	54,333	1,627,156	627,809	208,147	2,147,765	808,009
50 and over - population	8,749,703	127,802	2,807,793	62,280	1,758,855	674,384	220,036	2,211,211	885,370
50 and over % with dose 1	98.21%	>99%	98.90%	90.72%	95.50%	96.54%	97.59%	98.51%	95.61%
50 and over % with dose 2	95.99%	>99%	97.70%	87.24%	92.51%	93.09%	94.60%	97.13%	91.26%
70 and over - dose 1	2,989,778	43,797	982,528	11,621	576,831	243,417	78,797	752,219	279,146
70 and over - dose 2	2,919,149	43,106	967,085	11,168	560,223	234,842	76,258	738,853	268,538
70 and over - population	2,934,706	39,946	962,606	12,343	577,767	240,514	77,155	743,519	280,281
70 and over % with dose 1	>99%	>99%	>99%	94.15%	>99%	>99%	>99%	>99%	>99%
70 and over % with dose 2	>99%	>99%	>99%	90.48%	96.96%	97.64%	98.84%	>99%	95.81%
12 to 15 - dose 1	974,037	19,750	318,034	9,869	184,554	60,389	20,309	271,461	82,387
12 to 15 - dose 2	891,153	19,067	304,770	8,363	161,486	51,766	17,853	254,753	67,162
12 to 15 - population	1,243,990	19,693	390,330	13,060	270,146	82,747	26,308	308,611	132,869
12 to 15 % with dose 1	78.30%	>99%	81.48%	75.57%	68.32%	72.98%	77.20%	87.96%	62.01%
12 to 15 % with dose 2	71.64%	96.82%	78.08%	64.04%	59.78%	62.56%	67.86%	82.55%	50.55%

*National population will not equal sum of listed jurisdictions due to a small number of people counted in national population residing in some 'other' territories. Sum of state doses will not add to national total as some records are unable to be geocoded to a State or Territory.

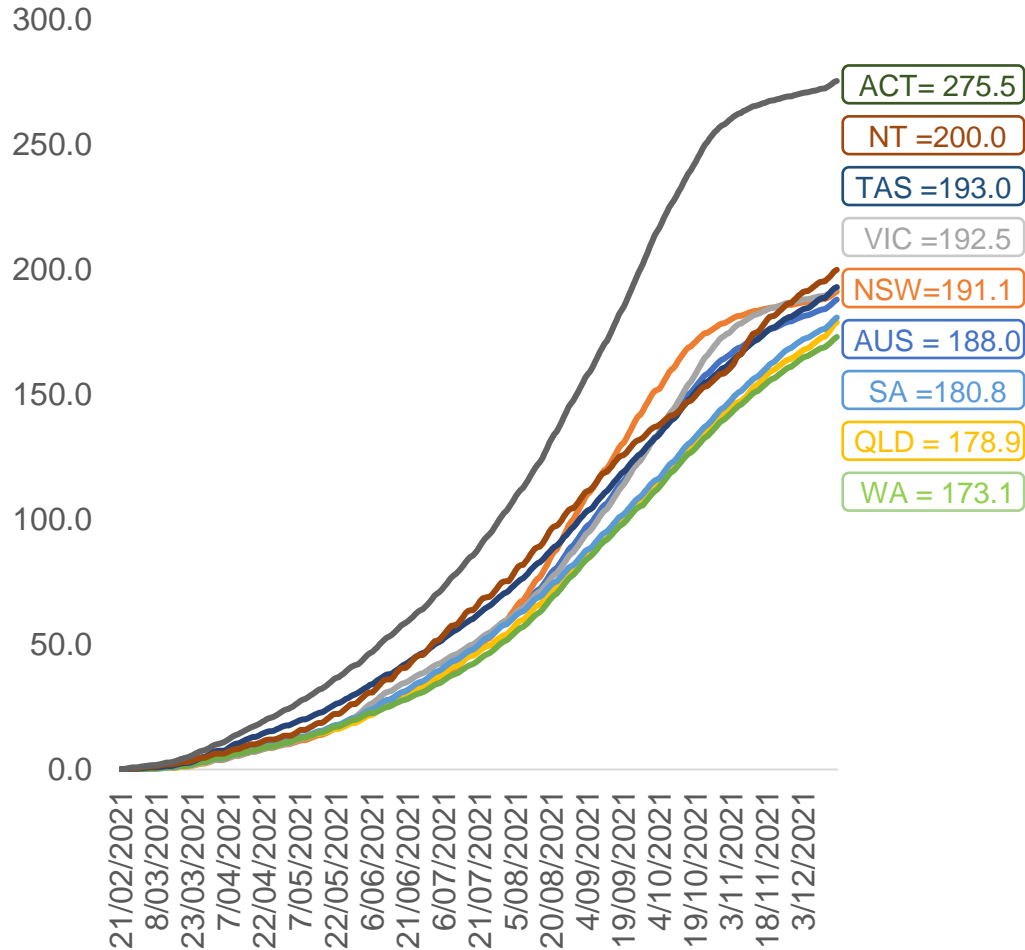
Doses sourced from Australian Immunisation Register, population from ABS ERP June 2020

Vaccinations by location

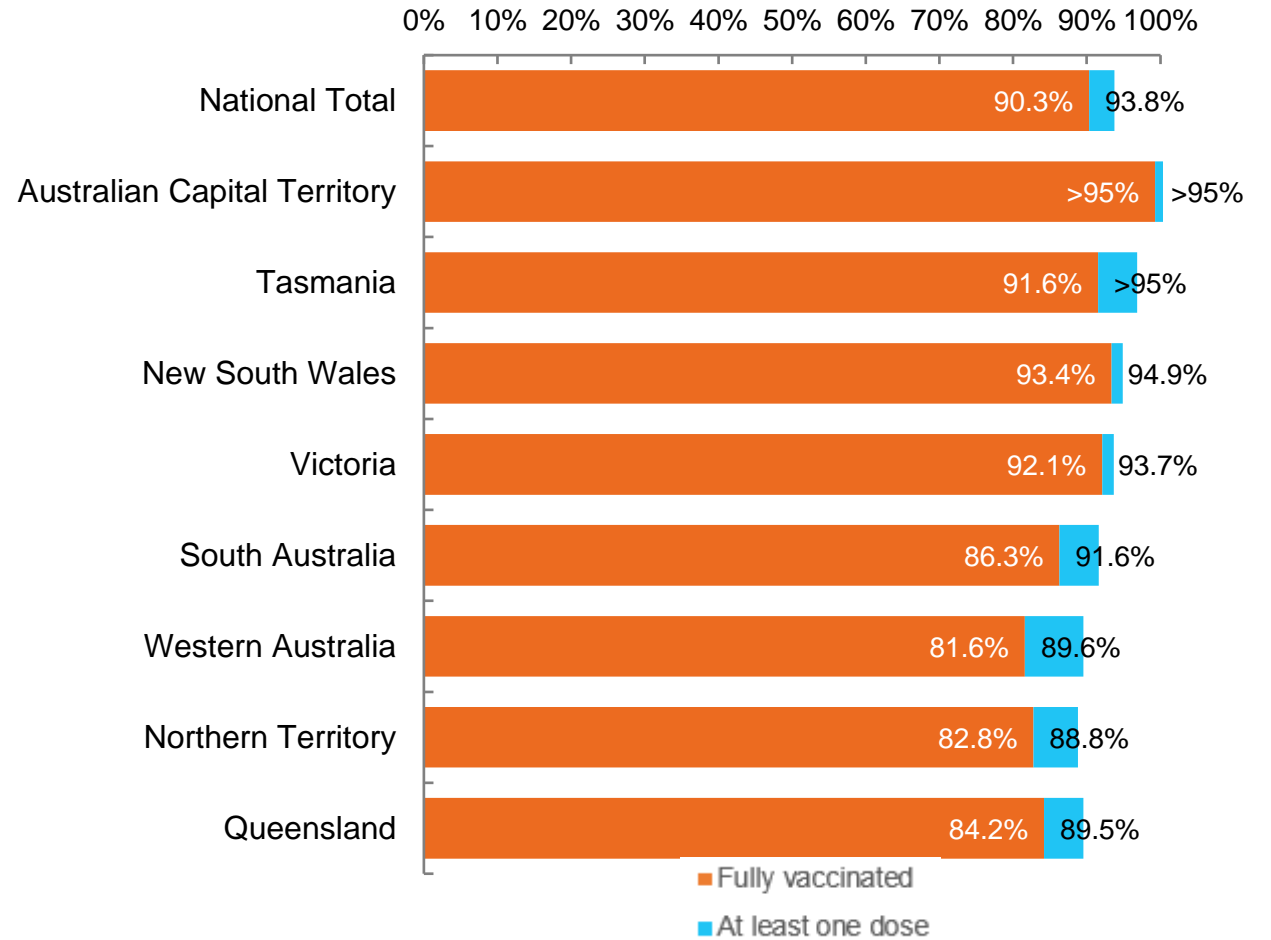
Data as at:
17 Dec 2021

Australia's COVID-19
Vaccine Roadmap

Cumulative total doses administered vs eligible state populations*



First and Second Doses by state of residence



*Not an indication of percentage vaccinated, numbers will exceed 100 due to multiple doses required per person of the population. All doses are included, including those for the 12-15 cohort, and are based on vaccination provider location.

Aboriginal and Torres Strait Islander peoples

Number of people vaccinated

Data as at:
14 Dec 2021
Updated weekly

Australia's COVID-19
Vaccine Roadmap



406,330

people over the age of 16
have had at least one dose

77.0%

of people over the age of 16
have had at least one dose



357,778

people over the age of 16
are fully vaccinated

67.8%

of people over the age of 16 are
fully vaccinated



**41,082
(57.4%)**

people aged 12-15 years
have had at least one dose

173 Aboriginal community controlled health services (ACCHS)

0#	50	27	41	12	3	21	19
ACT	NSW	NT	QLD	SA	TAS	VIC	WA

Medicare Address State ^{##}	Individuals Dose 1	Individuals Dose 1 %	Individuals Dose 2	Individuals Dose 2 %
Australian Capital Territory	4,933	90.5%	4,754	87.2%
New South Wales	137,732	86.1%	133,061	83.1%
Northern Territory	38,360	82.6%	32,287	69.6%
Queensland	102,592	71.7%	85,148	59.5%
South Australia	18,369	72.1%	15,302	60.1%
Tasmania	14,193	83.0%	12,950	75.8%
Victoria	35,749	88.3%	34,299	84.7%
Western Australia	40,303	63.3%	29,301	46.0%
Unknown/Other Territories	14,099	54.4%	10,676	41.2%
Totals	406,330	77.0%	357,778	67.8%

Source: Australian Immunisation Register

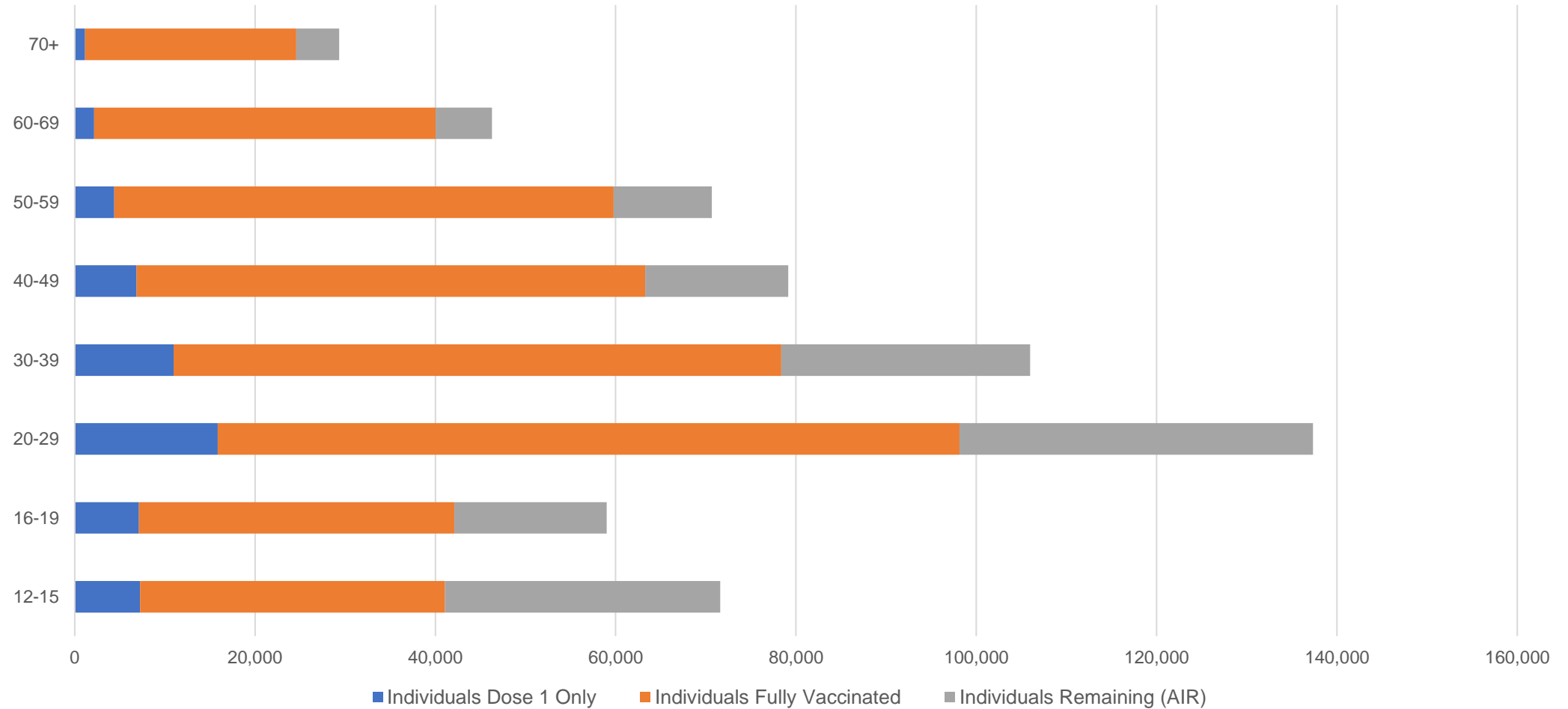
*Identifying as Aboriginal and Torres Strait Islander is optional and the estimated population may be under reported.
 **Includes all Aboriginal and Torres Strait Islander peoples who have received a vaccination, not limited to those administered in an ACCHS setting
 #ACCHS in the ACT are currently operating as a Commonwealth Vaccine Clinics so not included to avoid double counting
 ##The above table includes all identified Aboriginal and Torres Strait Islander people who are aged 16 and above by their state of residence.

Aboriginal and Torres Strait Islander peoples

Number of people vaccinated by age

Data as at:
14 Dec 2021
Updated weekly

Australia's COVID-19
Vaccine Roadmap



Source: Australian Immunisation Register

Data as at:
17 Dec 2021

Commonwealth primary care



Primary care vaccine administration sites

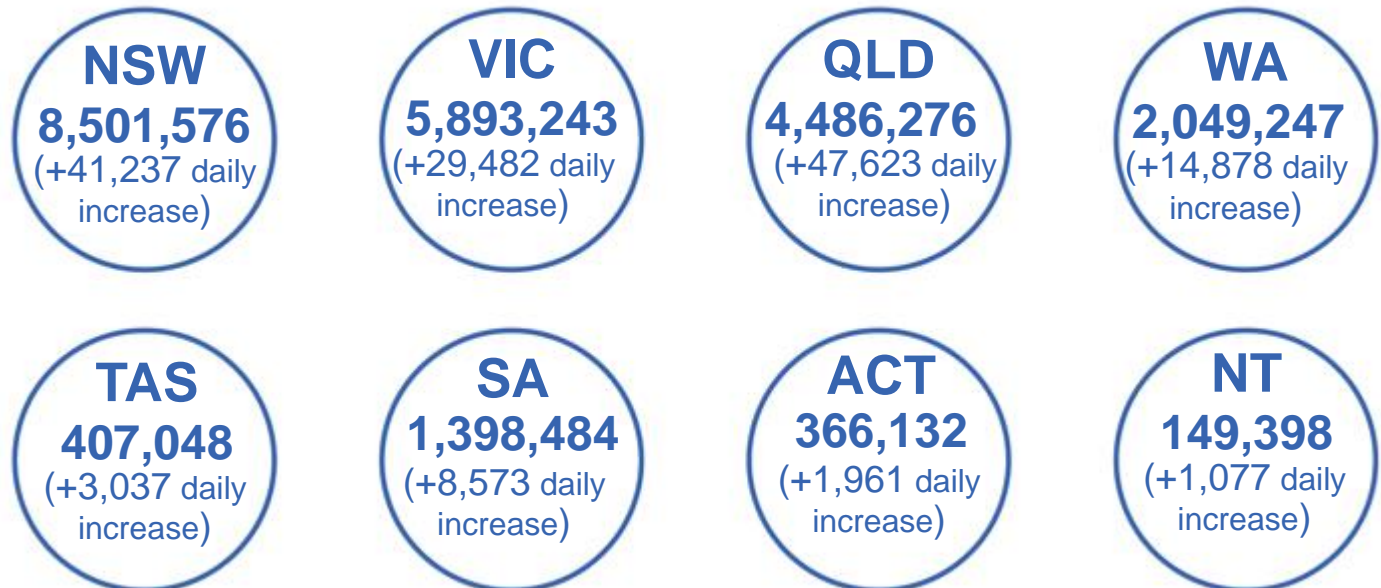
5,668	137	173	3,465
GPs	CVCs	ACCHS	Pharmacies



23,413,371 total vaccine doses administered
primary care settings as at 17 December
+ 146,934 recorded in the last 24 hours

Primary care vaccinations by provider type

	Doses administered	Daily increase	7 day increase
General Practice* includes other Commonwealth	20,660,739	94,819	416,706
Pharmacy	2,752,632	52,115	236,005



161,967 doses administered to persons residing in other territories or with missing residential information

*General practice includes Commonwealth Vaccination Clinics, Aboriginal Community Health Centres, Royal Flying Doctor Service and other Commonwealth vaccination facilities

Source: Australian Immunisation Register

Data as at:
17 Dec 2021

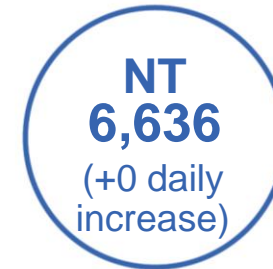
Commonwealth aged care and disability doses administered



1,165,789 (+ 2,755 last 24 hours)

Total vaccine doses administered in aged care and disability facilities as at 17 December

Number of doses administered as part of the Commonwealth aged and disability care rollout



28,034

doses administered to persons residing in other territories or with missing residential information

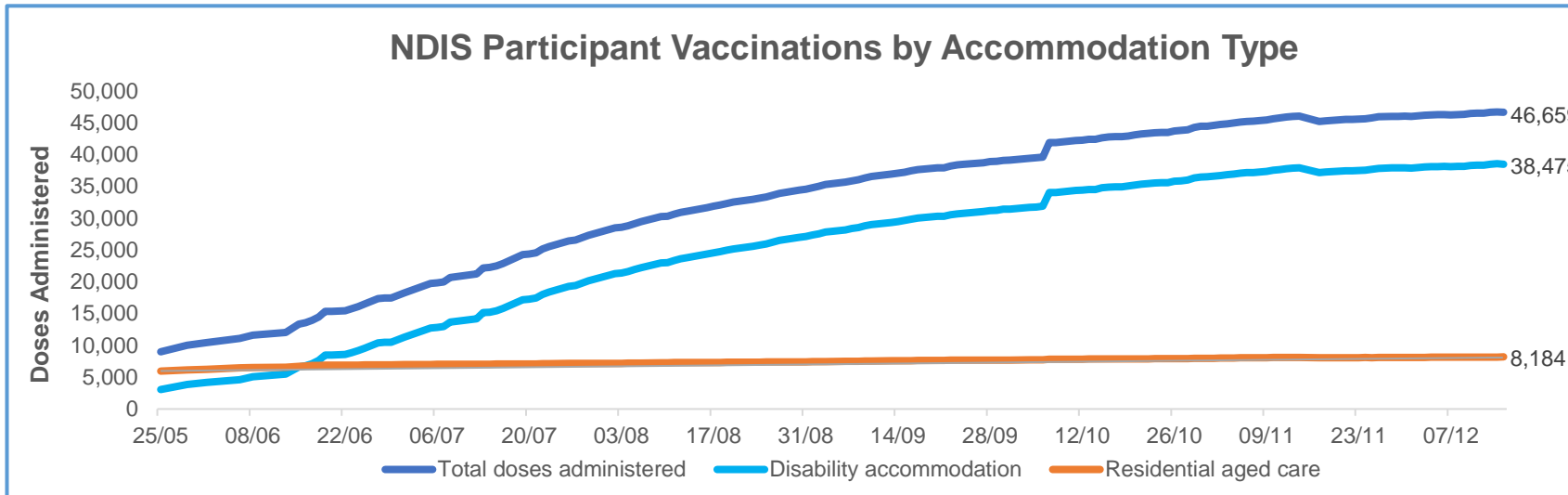
*Sourced from the Australian Immunisation Register. Includes all persons vaccinated at participating residential aged care, disability and related industry settings.
**State level breakdown indicates the residential location and may not align to the state in which the vaccination occurred.

Source: Australian Immunisation Register

Data as at:
15 Dec 2021*

Vaccination rate of people with disability and the disability workforce

Phase 1a – People with disability living in shared accommodation



	Total people with at least one dose	People fully vaccinated	Total number of individuals in cohort	Total doses administered	% People with at least one dose	% People fully vaccinated
NDIS participants living in shared accommodation **	23,745	22,914	27,603	46,659	86.0%	83.0%
NDIS screened workers ***	231,856	223,650	262,707	455,506	88.3%	85.1%

* Updates are available Monday to Friday on participants, and bi-weekly for workers, numbers may be up to four days old.

** Shared accommodation means two or more people with disability living in shared residential accommodation and NDIS participants living in Residential Aged Care accommodation as per the eligibility criteria of Phase 1a. The number of residents changes over time and refinement of methodology can lead to corrections in totals.

*** Total number of workers within the NDIS Commission Worker Screening database who have ever been successfully screened and linked to an NDIS registered provider or participant.

Source: Linkage between National Disability Insurance Agency data, NDIS Quality and Safeguards Commission data and the Australian Immunisation Register.

Residential aged care vaccination rollout

Residential aged care facilities status

100% Commonwealth facilities visited (2,577 planned sites)

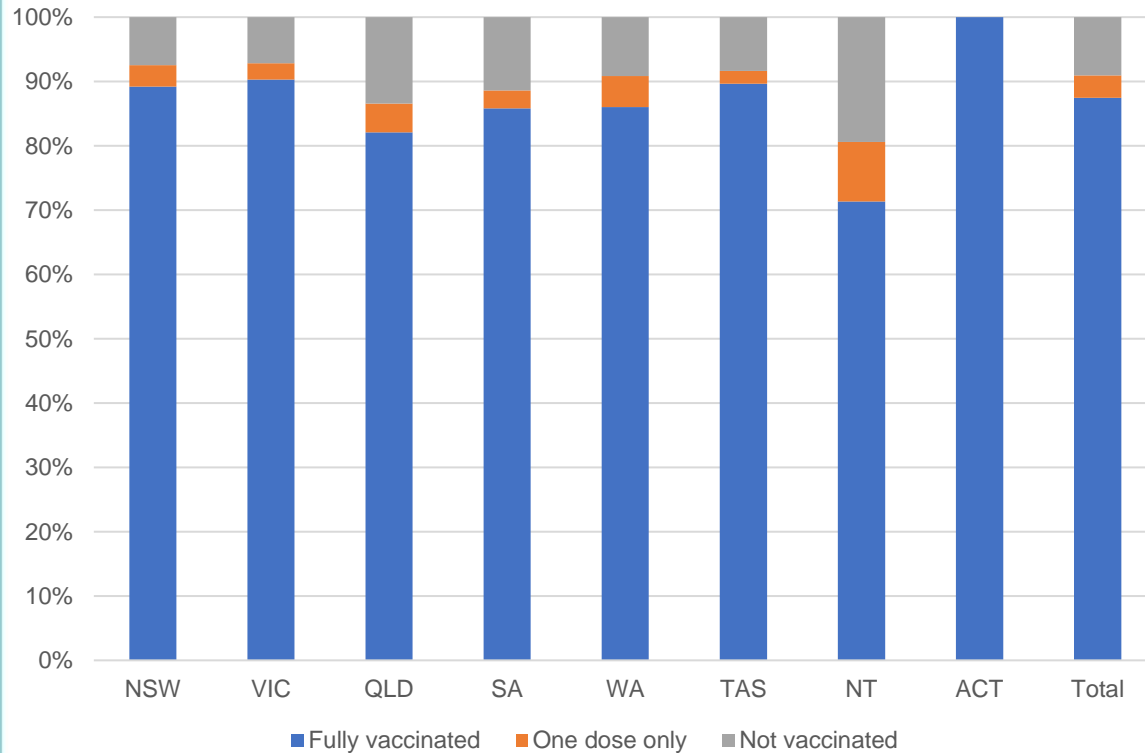
162,602 People fully vaccinated

168,992 People with at least one dose

Australia's COVID-19 Vaccine Roadmap

Data as at:
16 Dec 2021

Aged care resident vaccinations



Aged care worker vaccinations

Jurisdictions	Total workers with at least one dose	Workers fully vaccinated	% Workers with at least one dose	% Workers fully vaccinated
NSW	79,357	79,315	99.9%	99.9%
VIC	70,851	70,848	99.6%	99.6%
QLD	48,988	48,925	99.9%	99.7%
SA	27,513	27,329	99.5%	98.8%
WA	23,800	23,693	99.9%	99.5%
TAS	7,575	7,492	100.0%	98.9%
NT	870	867	100.0%	99.7%
ACT	2,992	2,992	100.0%	100.0%
Total	261,946	261,461	99.8%	99.6%

Source: My Aged Care Portal staff vaccination progress

**Resident vaccination information is reported manually by service providers

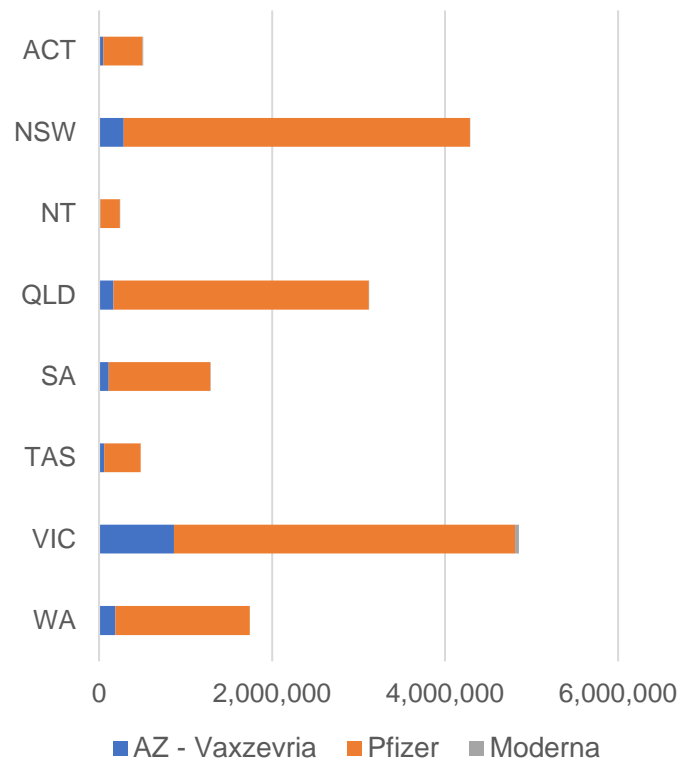
*Status updates are provided by facilities at least once per week. Reporting is updated Monday to Friday to encompass different facility updates being made on different days.

Data is sourced directly from Aged Care Service Providers and is not drawn or closely aligned with data from AIR due to inconsistencies and potential lags in uploading of records.

Data as at:
17 Dec 2021

Jurisdiction administered

Total vaccine doses administered in State and Territory clinics as at 17 December



16,517,753 total vaccine doses administered in State and Territory clinics as at 17 December
 + **59,464** recorded in the last 24 hours
 + **311,392** recorded in the last 7 days

NSW
4,287,773
 (+12,273 daily increase)

VIC
4,853,983
 (+11,673 daily increase)

QLD
3,119,389
 (+19,592 daily increase)

WA
1,742,575
 (+5,706 daily increase)

TAS
478,487
 (+1,177 daily increase)

SA
1,286,868
 (+5,768 daily increase)

ACT
510,386
 (+2,314 daily increase)

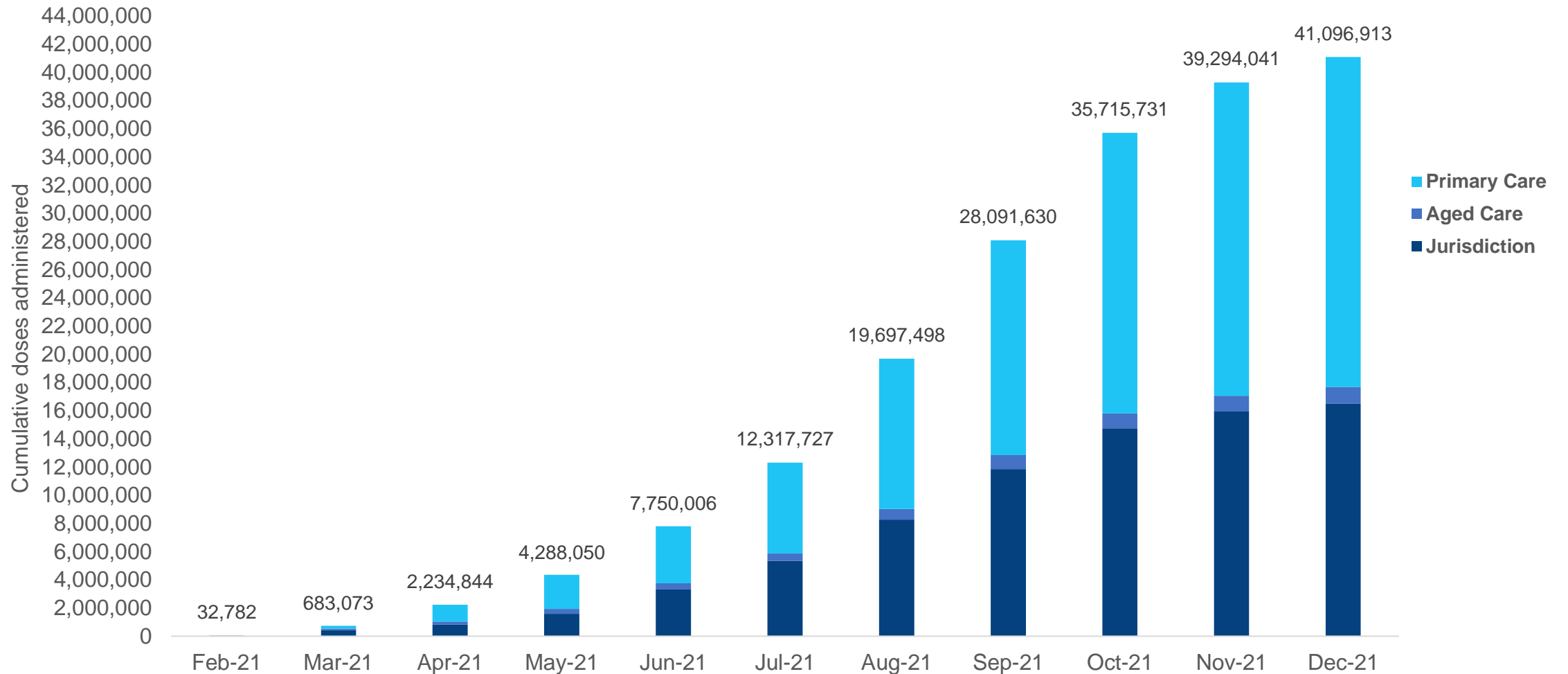
NT
238,292
 (+961 daily increase)

*Sourced from the Australian Immunisation Register and self-reported data. Numbers are calculated as difference in daily cumulative reported numbers to allow for historical corrections in all self-reported data sources.

Source: Australian Immunisation Register

Data as at:
17 Dec 2021

Cumulative doses administered by channel



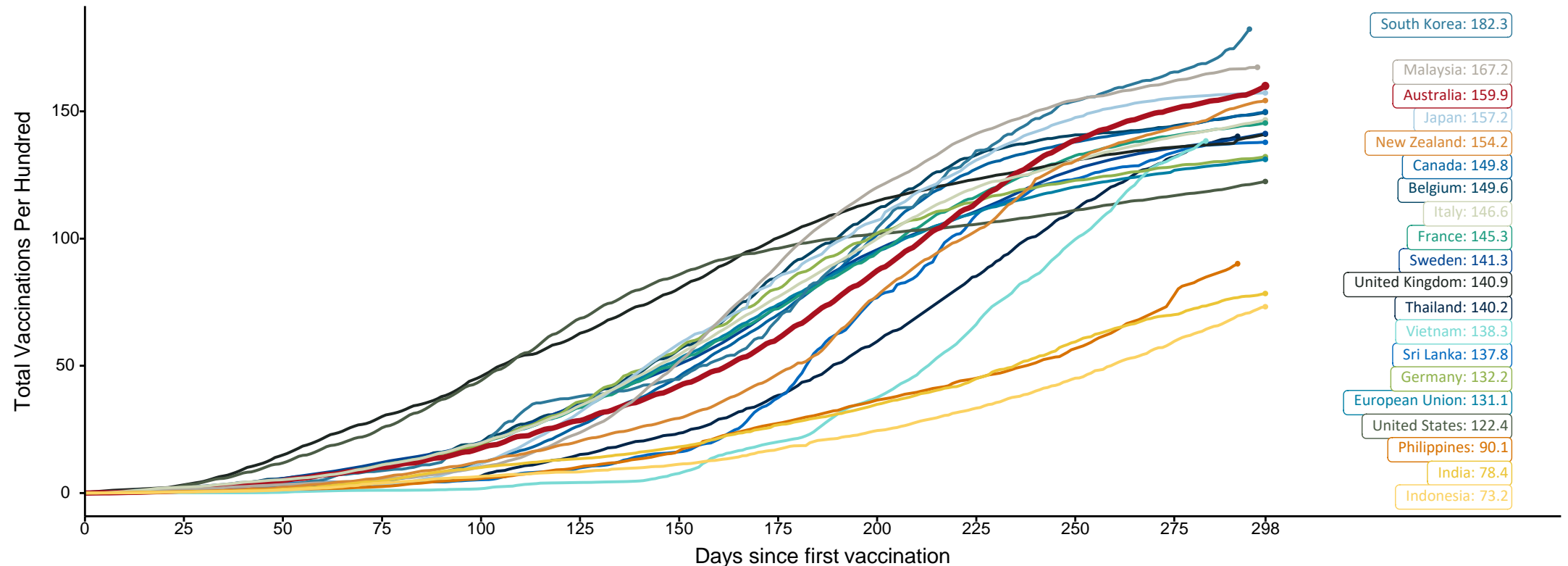
Source: Australian Immunisation Register

Doses at equivalent stages of rollout (Day 298)

Data as at:
17 Dec 2021

The x-axis is truncated at the length of Australia's vaccination program. Countries with intermittent reporting have had their doses per 100 imputed to Australia's current stage of rollout. Israel excluded as it is beyond scale of the graph

Cumulative doses administered (17 Dec): **41,096,913**

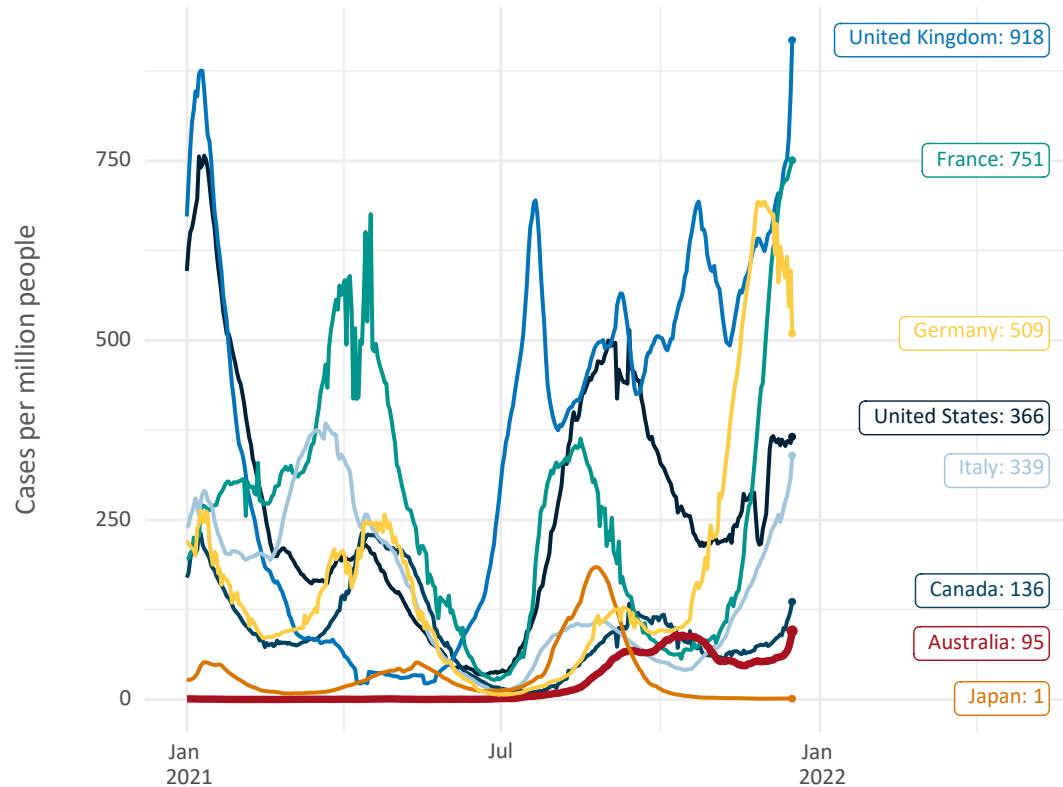


Note: From 15 September 2021, data for Australia includes all doses administered to people 12 and over. Prior to 15 September, data was for 16 and over
 Due to data revisions, Singapore has been removed from the chart
 Source: Department of Health (Australia), Our World in Data (international)
 Latest data: 17 December

Data as at:
17 Dec 2021

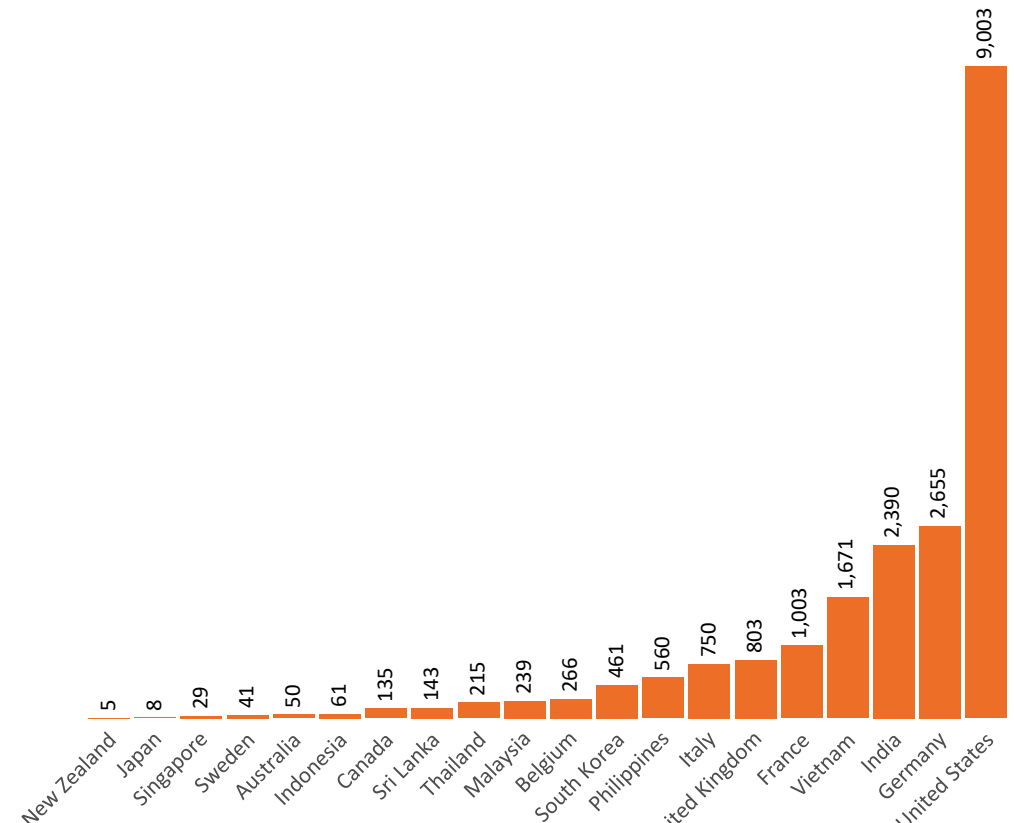
International data – COVID-19

New daily cases per million in 2021, Australia and G7 countries
Smoothed - 7 day average



Source: OWID
Data downloaded: 18 Dec 2021 10:30
Latest data: 16 Dec 2021

COVID-19 deaths in past 7 days - Australia and select countries



Source: OWID
Data downloaded: 18 Dec 2021 10:31
Latest data: 16 Dec 2021

Data as at midnight:
17 Dec 2021

Pandemic Response Payments



2.38 million
People have received at least one COVID Disaster Payment (including ISP200)

\$13.08 billion
Paid Out as at 17 Dec 2021


6.13 million
Claims granted across three different payments



96%
of Claims Received Digitally



COVID Disaster Payment:	5.89 million claims received - 2.19 million individuals paid a total of \$12.59 billion.
\$200 Income Support Payment:	352,000 claims received - 183,000 individuals paid a total of \$268.89 million.
Pandemic Leave Disaster Payment:	158,000 claims received - 135,000 individuals paid a total of \$218.40 million.



THREE PAYMENTS AVAILABLE

COVID Disaster Payment
assisting during a lockdown event in a Commonwealth hotspot.

Income Support Payment \$200
for income support recipients who lost at least 8 hours of work.

Pandemic Leave Disaster Payment
for those who have to self-isolate, quarantine or care.

For more information visit:
servicesaustralia.gov.au

COVID-19 DISASTER PAYMENTS

Victoria
Lockdown (#6) since 6 Aug to 28 Oct
Claiming period ends 9 Dec

745,000 people have received at least one COVID Disaster Payment.

\$4.45b paid out as at 17 Dec 2021.

\$770,000 paid in initial and reoccurring payments in the week ending 12 Dec 2021.

Cumulative payments made by State since activation on 8 Jun 2021.

Date	Cumulative Payments
21 Nov	\$4.43b
28 Nov	\$4.45b
5 Dec	\$4.45b
12 Dec	\$4.45b
17 Dec	\$4.45b

Northern Territory
Lockdown (#3) from 16 Nov to 22 Nov
Claiming period ends 27 Dec

7,300 people have received at least one COVID Disaster Payment.

\$6.7m paid out as at 17 Dec 2021.

\$816,000 paid in initial payments in the week ending 12 Dec 2021.

Cumulative payments made by State since activation on 25 Aug 2021.

Date	Cumulative Payments
21 Nov	\$4.2m
28 Nov	\$4.8m
5 Dec	\$5.6m
12 Dec	\$6.4m
17 Dec	\$6.7m

New South Wales
Lockdown from 24 Jun to 10 Oct
Claiming period ended 27 Nov

1.08m people have received at least one COVID Disaster Payment.

\$7.48b paid out as at 17 Dec 2021.

\$128,000 paid in initial and reoccurring payments in the week ending 12 Dec 2021.

Cumulative payments made by State since activation on 1 Jul 2021.

Date	Cumulative Payments
21 Nov	\$7.48b
28 Nov	\$7.48b
5 Dec	\$7.48b
12 Dec	\$7.48b
17 Dec	\$7.48b

Australian Capital Territory
Lockdown since 12 Aug to 14 Oct
Claiming period ended 25 Nov

65,000 people have received at least one COVID Disaster Payment.

\$344.7m paid out as at 17 Dec 2021.

\$6,000 paid in initial and reoccurring payments in the week ending 12 Dec 2021.

Cumulative payments made by State since activation on 20 Aug 2021.

Date	Cumulative Payments
21 Nov	\$344.7m
28 Nov	\$344.7m
5 Dec	\$344.7m
12 Dec	\$344.7m
17 Dec	\$344.7m

Pandemic Response Payments (continued)

Data as at midnight:
17 Dec 2021

COVID-19 DISASTER PAYMENTS

