



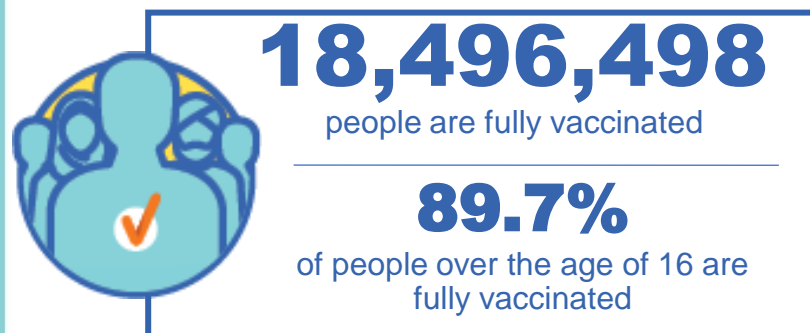
Australian Government
Operation COVID Shield

COVID-19 Vaccine Rollout

15 December 2021

Data as at:
14 Dec 2021

Total vaccine doses



40,505,476 total vaccine doses administered nationally as at 14 December

+161,915 recorded in the last 24 hours

NSW
13,150,881
(+35,672 daily increase)

VIC
10,886,515
(+30,874 daily increase)

QLD
7,657,016
(+52,195 daily increase)

WA
3,827,972
(+18,646 daily increase)

TAS
884,369
(+3,116 daily increase)

SA
2,708,507
(+13,777 daily increase)

ACT
989,677
(+5,982 daily increase)

NT
400,539
(+1,653 daily increase)

*Administration state breakdown indicates state in which a vaccine was administered

**Overall dose count includes instances of more than two doses per person in a small number of cases.

Source: Australian Immunisation Register

Data as at:
14 Dec 2021

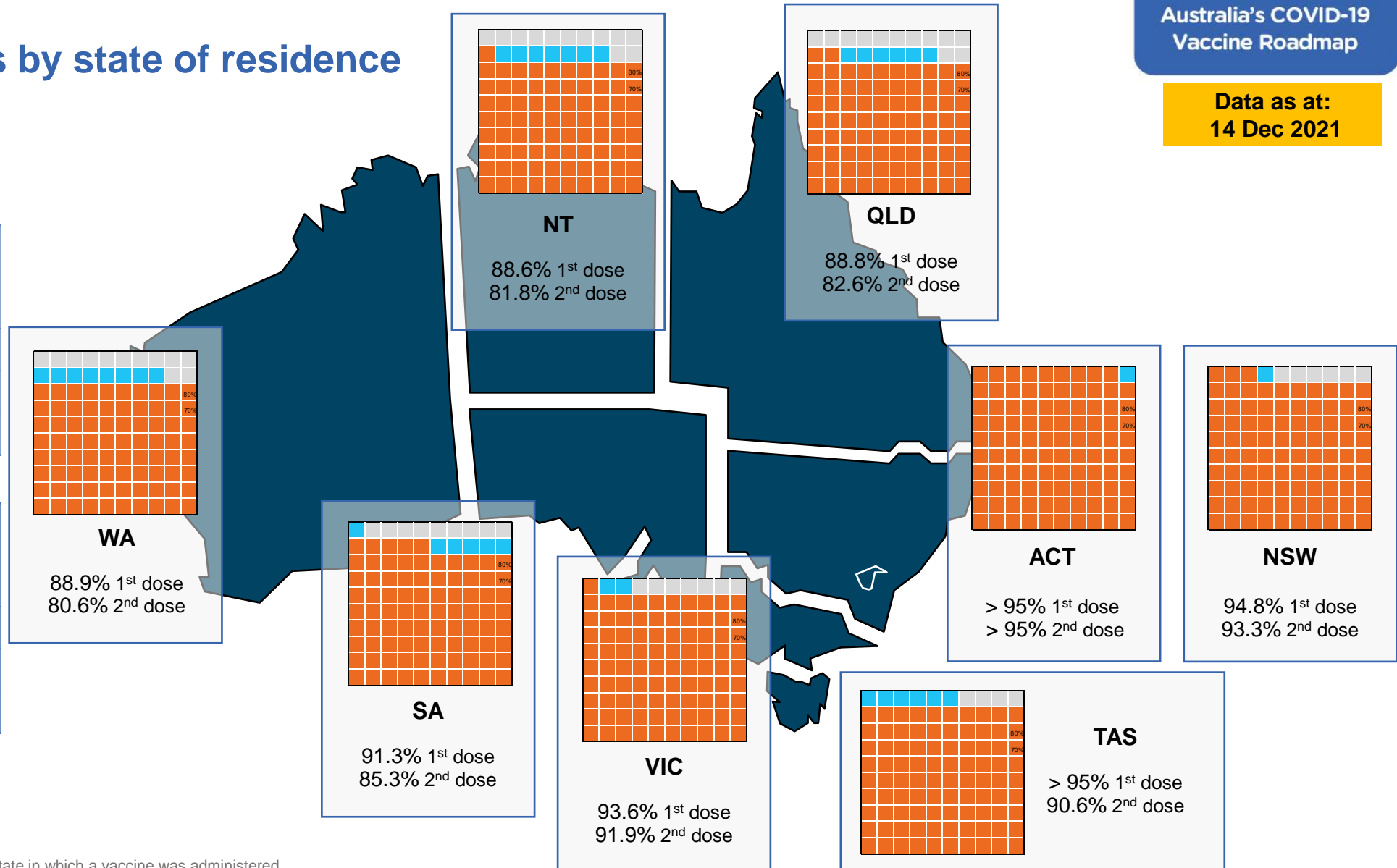
Vaccinations by state of residence

First doses

Age	Today	4 weeks ago	8 weeks ago
16+	93.5%	91.1%	86.1%
50+	>95%	>95%	94.3%
70+	>95%	>95%	>95%

Fully vaccinated

Age	Today	4 weeks ago	8 weeks ago
16+	89.7%	84.3%	70.9%
50+	>95%	91.7%	82.2%
70+	>95%	>95%	87.8%



*Residential state may differ from the state in which a vaccine was administered

Commonwealth and Jurisdiction vaccine doses administered

Data as at:
14 Dec 2021



40,505,476 total vaccine
doses administered nationally as at 14 December
+ 161,915 recorded in the last 24 hours



16,346,590
doses administered by state
and territory facilities
+ 47,435
recorded in the last 24 hours



24,158,886
doses administered by
commonwealth facilities
+ 114,480
recorded in the last 24 hours

23,002,607 total vaccine doses
administered in primary care settings
1,156,279 total vaccine doses
administered in aged care and disability
settings

NSW	Jurisdictions	Commonwealth
Cumulative	4,257,058	8,893,823
Daily increase	7,477	28,195

VIC	Jurisdictions	Commonwealth
Cumulative	4,820,531	6,065,984
Daily increase	10,223	20,651

QLD	Jurisdictions	Commonwealth
Cumulative	3,064,783	4,592,233
Daily increase	14,336	37,859

WA	Jurisdictions	Commonwealth
Cumulative	1,724,507	2,103,465
Daily increase	6,343	12,303

TAS	Jurisdictions	Commonwealth
Cumulative	472,174	412,195
Daily increase	22	3,094

SA	Jurisdictions	Commonwealth
Cumulative	1,268,779	1,439,728
Daily increase	5,836	7,941

ACT	Jurisdictions	Commonwealth
Cumulative	503,630	486,047
Daily increase	2,400	3,582

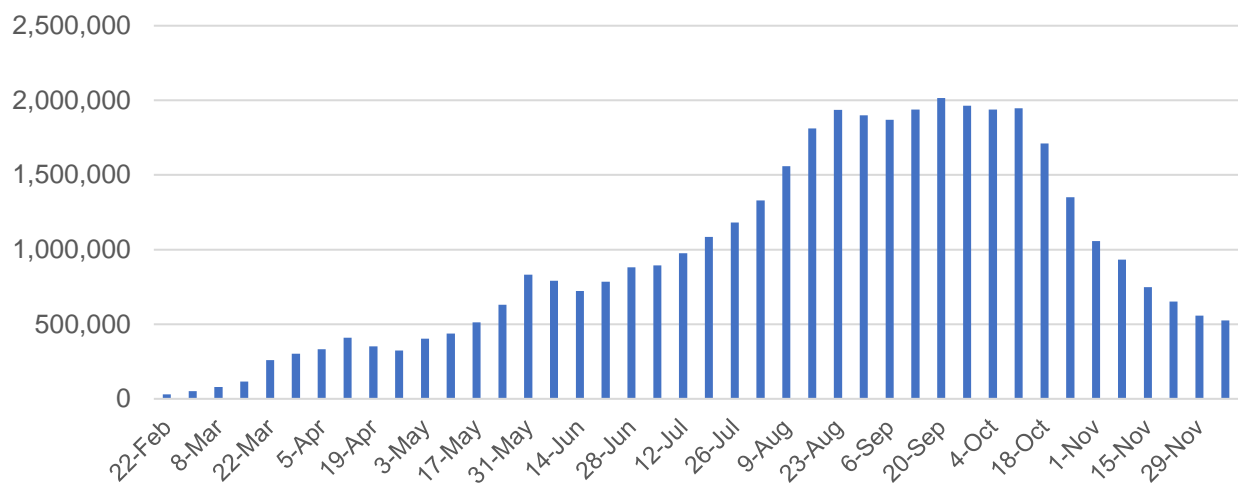
NT	Jurisdictions	Commonwealth
Cumulative	235,128	165,411
Daily increase	798	855

Vaccine milestone charts

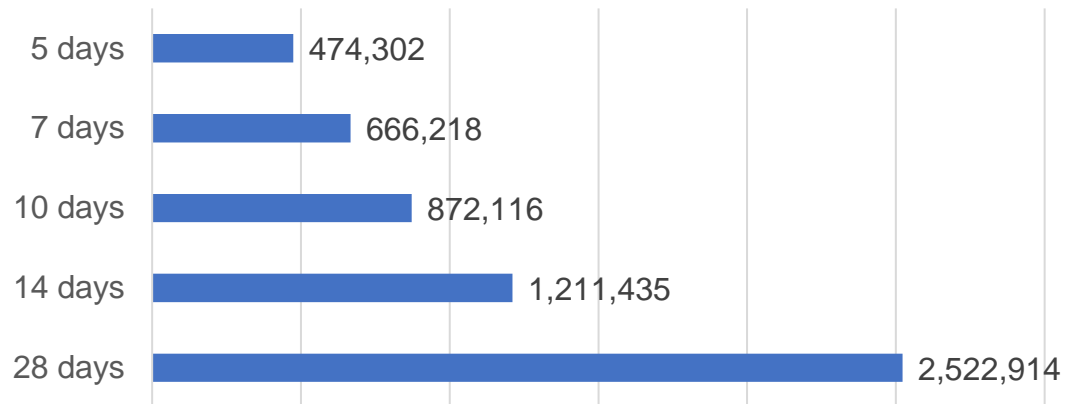
Data as at:
14 Dec 2021

Australia's COVID-19
Vaccine Roadmap

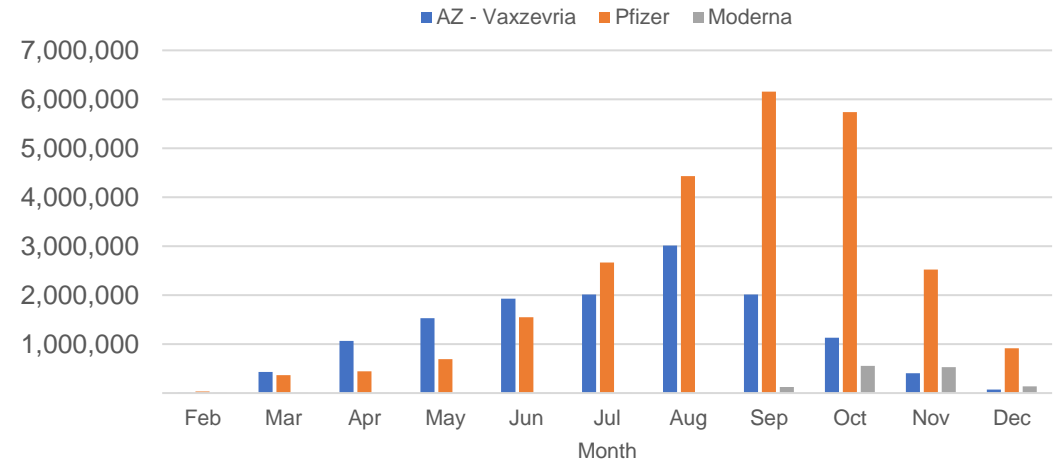
Doses Administered by Week



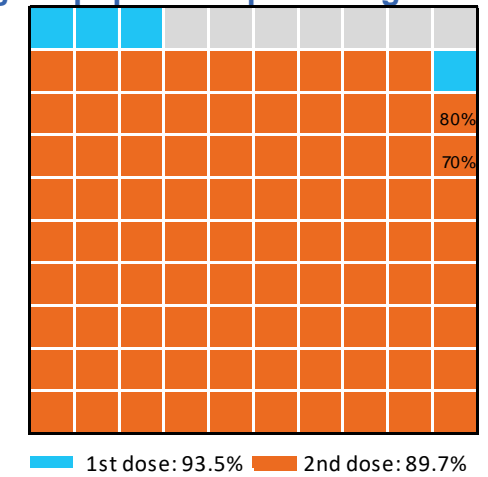
Doses Reported



Doses by administration month and vaccine type



Eligible population percentage coverage



*Sourced from the Australian Immunisation Register.

*Each square represents 1% of the national population. Squares are filled as milestones are achieved.

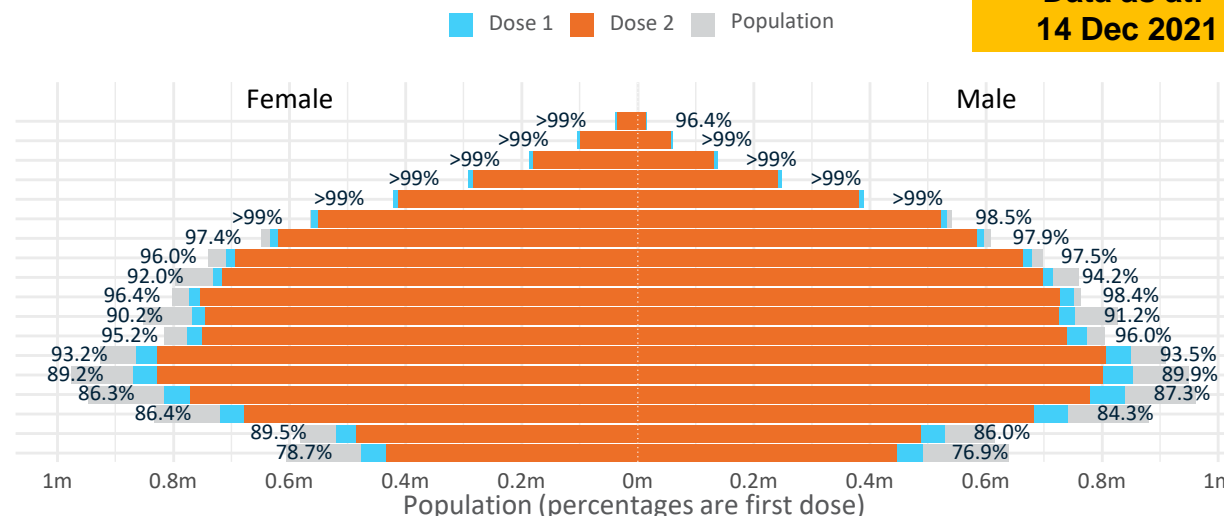
Doses by age and sex

First and second doses by age and sex

Australia's COVID-19
Vaccine Roadmap

Data as at:
14 Dec 2021

Age	Dose 1	Dose 2
95+	53,505 (>99%)	49,476 (93.5%)
90-94	163,493 (>99%)	155,306 (98.0%)
85-89	323,963 (>99%)	311,970 (98.7%)
80-84	539,918 (>99%)	525,623 (>99%)
75-79	809,909 (>99%)	793,081 (>99%)
70-74	1,094,304 (>99%)	1,073,050 (97.1%)
65-69	1,229,912 (97.8%)	1,203,879 (95.7%)
60-64	1,390,678 (96.8%)	1,357,330 (94.5%)
55-59	1,448,744 (93.1%)	1,413,892 (90.9%)
50-54	1,524,540 (97.4%)	1,481,345 (94.7%)
45-49	1,522,281 (90.8%)	1,472,518 (87.8%)
40-44	1,551,388 (95.8%)	1,491,699 (92.1%)
35-39	1,717,338 (93.6%)	1,638,243 (89.3%)
30-34	1,730,357 (89.9%)	1,634,363 (85.0%)
25-29	1,665,601 (87.4%)	1,558,128 (81.7%)
20-24	1,466,660 (85.7%)	1,364,336 (79.7%)
16-19	1,049,287 (87.7%)	972,259 (81.3%)
12-15	967,415 (77.8%)	878,778 (70.6%)



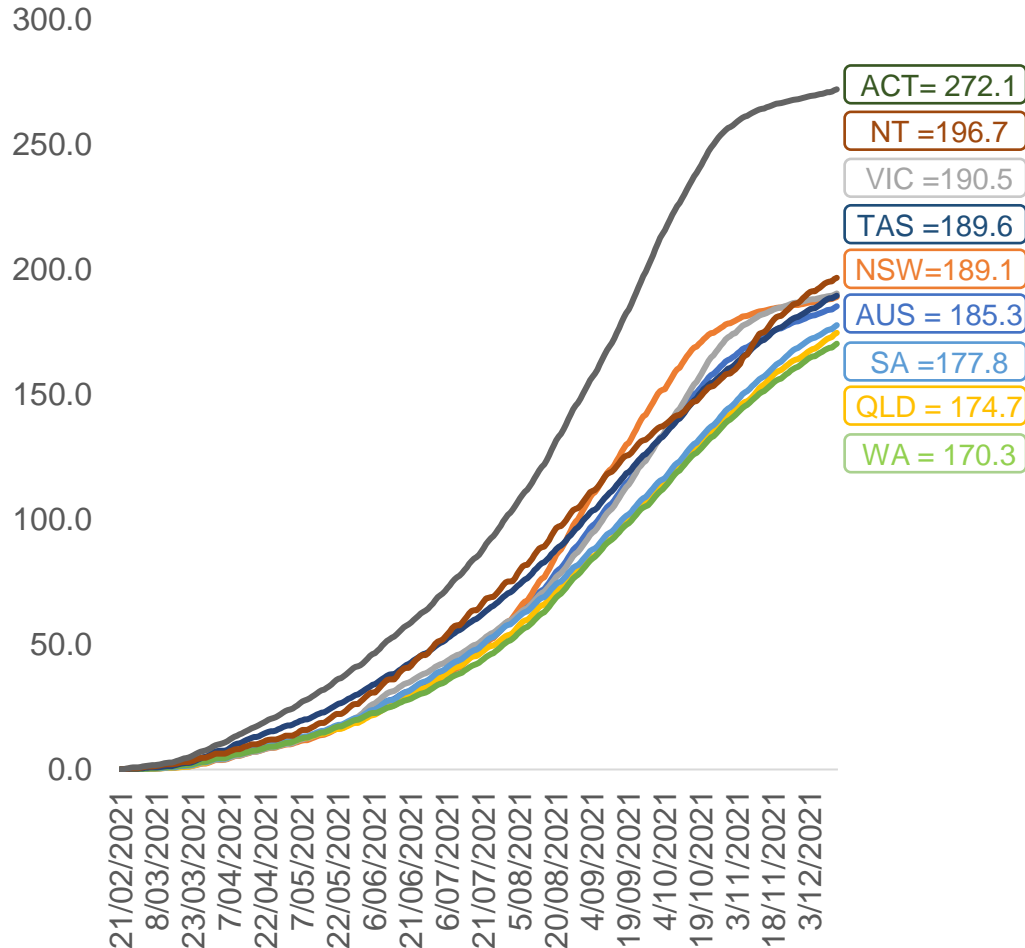
	AUS	ACT	NSW	NT	QLD	SA	TAS	VIC	WA
16 and over - dose 1	19,281,878	346,492	6,225,345	168,766	3,652,773	1,315,448	423,700	5,062,837	1,880,904
16 and over - dose 2	18,496,498	341,012	6,122,549	155,912	3,395,259	1,228,562	398,923	4,969,408	1,704,734
16 and over - population	20,619,959*	344,037	6,565,651	190,571	4,112,707	1,440,400	440,172	5,407,574	2,114,978
16 and over % with dose 1	93.51%	>99%	94.82%	88.56%	88.82%	91.33%	96.26%	93.62%	88.93%
16 and over % with dose 2	89.70%	>99%	93.25%	81.81%	82.56%	85.29%	90.63%	91.90%	80.60%
50 and over - dose 1	8,578,966	134,106	2,775,128	56,393	1,673,028	649,679	214,154	2,176,502	843,388
50 and over - dose 2	8,364,952	132,412	2,740,077	53,936	1,612,051	623,146	206,919	2,143,603	802,269
50 and over - population	8,749,703	127,802	2,807,793	62,280	1,758,855	674,384	220,036	2,211,211	885,370
50 and over % with dose 1	98.05%	>99%	98.84%	90.55%	95.12%	96.34%	97.33%	98.43%	95.26%
50 and over % with dose 2	95.60%	>99%	97.59%	86.60%	91.65%	92.40%	94.04%	96.94%	90.61%
70 and over - dose 1	2,985,092	43,768	981,655	11,591	575,123	242,872	78,582	751,402	278,368
70 and over - dose 2	2,908,506	43,047	965,631	11,087	556,359	233,218	75,825	737,041	266,956
70 and over - population	2,934,706	39,946	962,606	12,343	577,767	240,514	77,155	743,519	280,281
70 and over % with dose 1	>99%	>99%	>99%	93.91%	>99%	>99%	>99%	>99%	>99%
70 and over % with dose 2	>99%	>99%	>99%	89.82%	96.29%	96.97%	98.28%	>99%	95.25%
12 to 15 - dose 1	967,415	19,738	317,621	9,785	181,785	59,636	20,101	270,860	80,474
12 to 15 - dose 2	878,778	19,047	303,747	8,133	156,765	50,077	17,360	252,366	65,337
12 to 15 - population	1,243,990	19,693	390,330	13,060	270,146	82,747	26,308	308,611	132,869
12 to 15 % with dose 1	77.77%	>99%	81.37%	74.92%	67.29%	72.07%	76.41%	87.77%	60.57%
12 to 15 % with dose 2	70.64%	96.72%	77.82%	62.27%	58.03%	60.52%	65.99%	81.77%	49.17%

*National population will not equal sum of listed jurisdictions due to a small number of people counted in national population residing in some 'other' territories. Sum of state doses will not add to national total as some records are unable to be geocoded to a State or Territory.

Doses sourced from Australian Immunisation Register, population from ABS ERP June 2020

Vaccinations by location

Cumulative total doses administered vs eligible state populations*

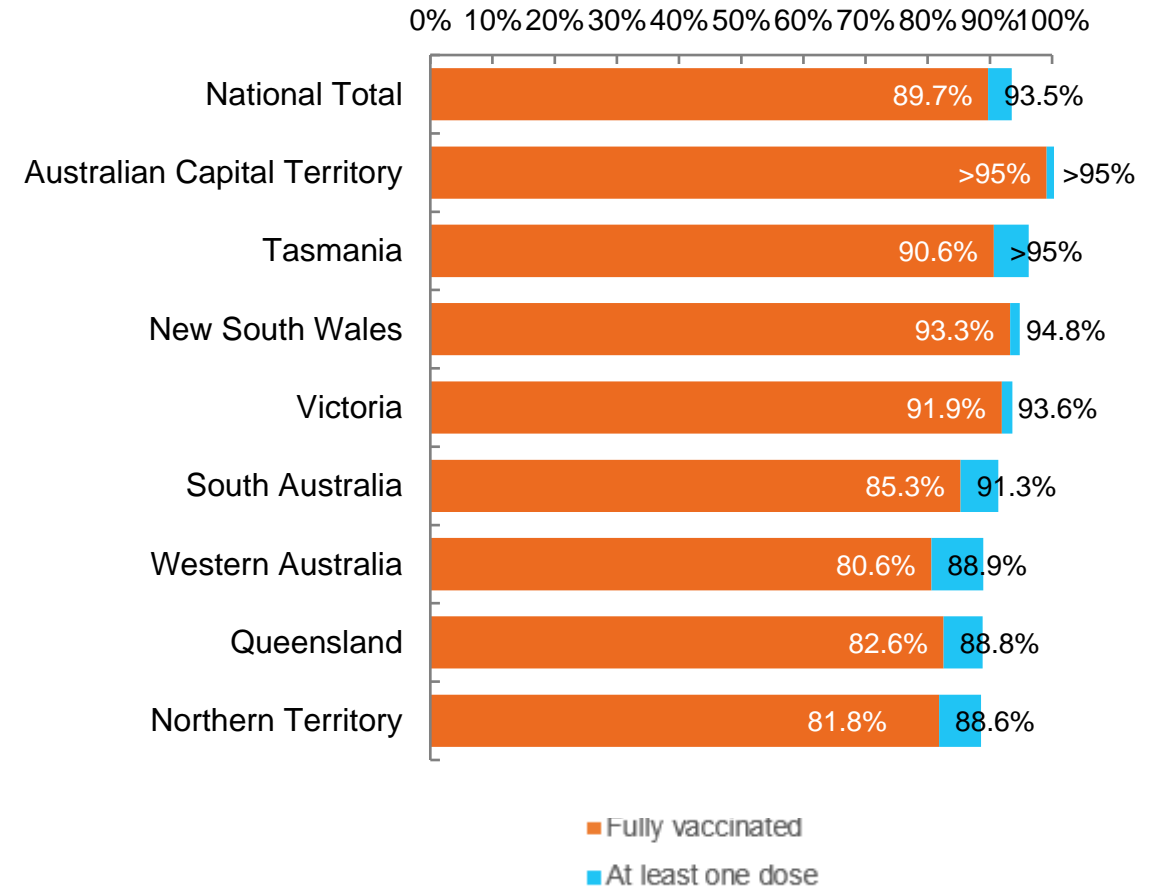


*Not an indication of percentage vaccinated, numbers will exceed 100 due to multiple doses required per person of the population. All doses are included, including those for the 12-15 cohort, and are based on vaccination provider location.

Data as at:
14 Dec 2021

Australia's COVID-19
Vaccine Roadmap

First and Second Doses by state of residence



Aboriginal and Torres Strait Islander peoples

Number of people vaccinated

Data as at:
14 Dec 2021
Updated weekly

Australia's COVID-19
Vaccine Roadmap



406,330

people over the age of 16
have had at least one dose

77.0%

of people over the age of 16
have had at least one dose



357,778

people over the age of 16
are fully vaccinated

67.8%

of people over the age of 16 are
fully vaccinated



**41,082
(57.4%)**

people aged 12-15 years
have had at least one dose

173 Aboriginal community controlled health services (ACCHS)

0#	50	27	41	12	3	21	19
ACT	NSW	NT	QLD	SA	TAS	VIC	WA

Medicare Address State ^{##}	Individuals Dose 1	Individuals Dose 1 %	Individuals Dose 2	Individuals Dose 2 %
Australian Capital Territory	4,933	90.5%	4,754	87.2%
New South Wales	137,732	86.1%	133,061	83.1%
Northern Territory	38,360	82.6%	32,287	69.6%
Queensland	102,592	71.7%	85,148	59.5%
South Australia	18,369	72.1%	15,302	60.1%
Tasmania	14,193	83.0%	12,950	75.8%
Victoria	35,749	88.3%	34,299	84.7%
Western Australia	40,303	63.3%	29,301	46.0%
Unknown/Other Territories	14,099	54.4%	10,676	41.2%
Totals	406,330	77.0%	357,778	67.8%

Source: Australian Immunisation Register

*Identifying as Aboriginal and Torres Strait Islander is optional and the estimated population may be under reported.

**Includes all Aboriginal and Torres Strait Islander peoples who have received a vaccination, not limited to those administered in an ACCHS setting

#ACCHS in the ACT are currently operating as a Commonwealth Vaccine Clinics so not included to avoid double counting

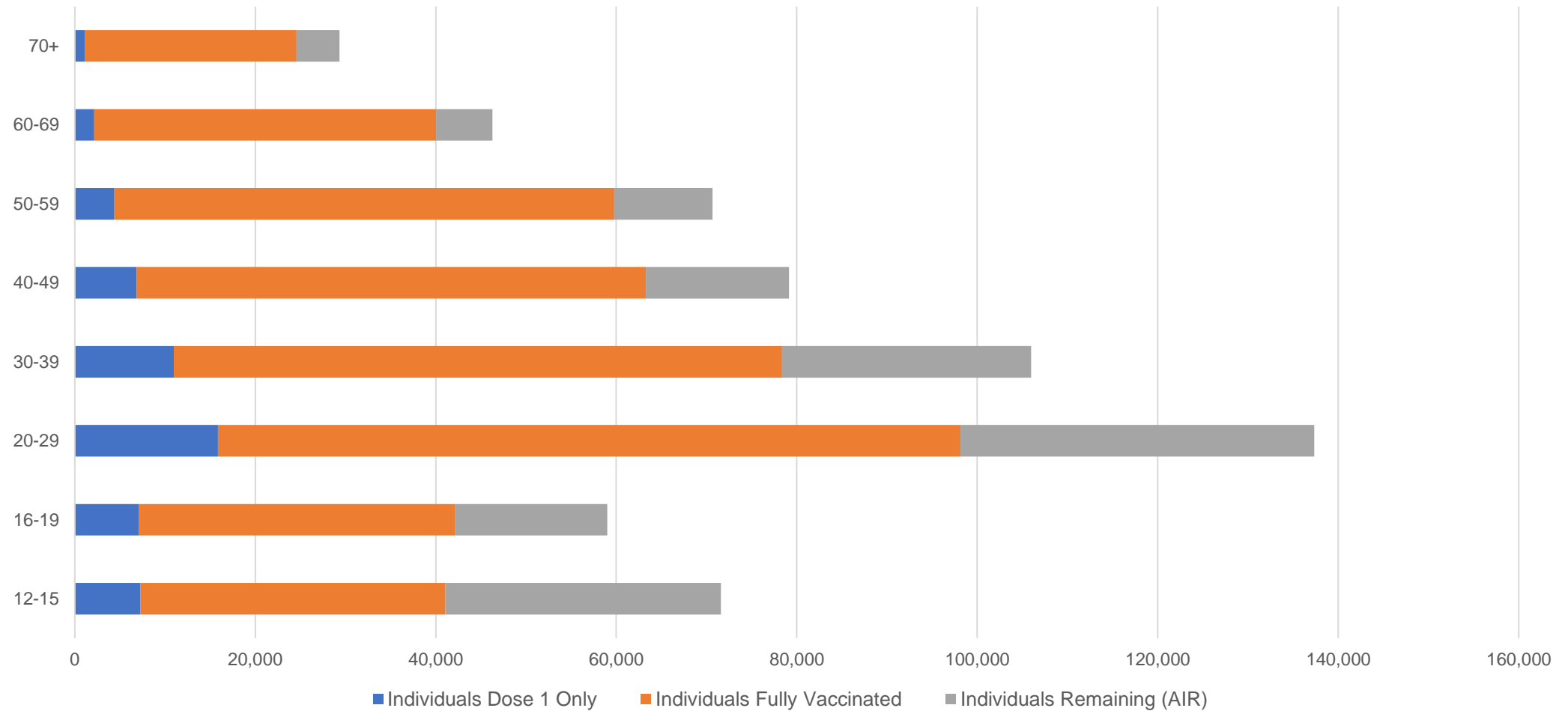
##The above table includes all identified Aboriginal and Torres Strait Islander people who are aged 16 and above by their state of residence.

Aboriginal and Torres Strait Islander peoples

Number of people vaccinated by age

Data as at:
14 Dec 2021
Updated weekly

Australia's COVID-19
Vaccine Roadmap



Source: Australian Immunisation Register

Data as at:
14 Dec 2021

Commonwealth primary care



Primary care vaccine administration sites

5,661	137	173	3,459
GPs	CVCs	ACCHS	Pharmacies



23,002,607 total vaccine doses administered
primary care settings as at 14 December
+ 112,302 recorded in the last 24 hours

Primary care vaccinations by provider type

	Doses administered	Daily increase	7 day increase
General Practice* includes other Commonwealth	20,397,420	71,831	284,143
Pharmacy	2,605,187	40,471	146,823



163,774 doses administered to persons
residing in other territories or with
missing residential information

*General practice includes Commonwealth Vaccination Clinics, Aboriginal Community Health Centres, Royal Flying Doctor Service and other Commonwealth vaccination facilities

Source: Australian Immunisation Register

Data as at:
14 Dec 2021

Commonwealth aged care and disability doses administered



1,156,279 (+ 2,178 last 24 hours)

Total vaccine doses administered in aged care and disability facilities as at 14 December

Number of doses administered as part of the Commonwealth aged and disability care rollout

NSW
531,950
(+431 daily increase)

VIC
215,036
(+573 daily increase)

QLD
179,686
(+600 daily increase)

WA
82,601
(+145 daily increase)

TAS
20,978
(+14 daily increase)

SA
76,303
(+371 daily increase)

ACT
15,148
(+19 daily increase)

NT
6,632
(+29 daily increase)

27,945

doses administered to persons
residing in other territories or with
missing residential information

*Sourced from the Australian Immunisation Register. Includes all persons vaccinated at participating residential aged care, disability and related industry settings.

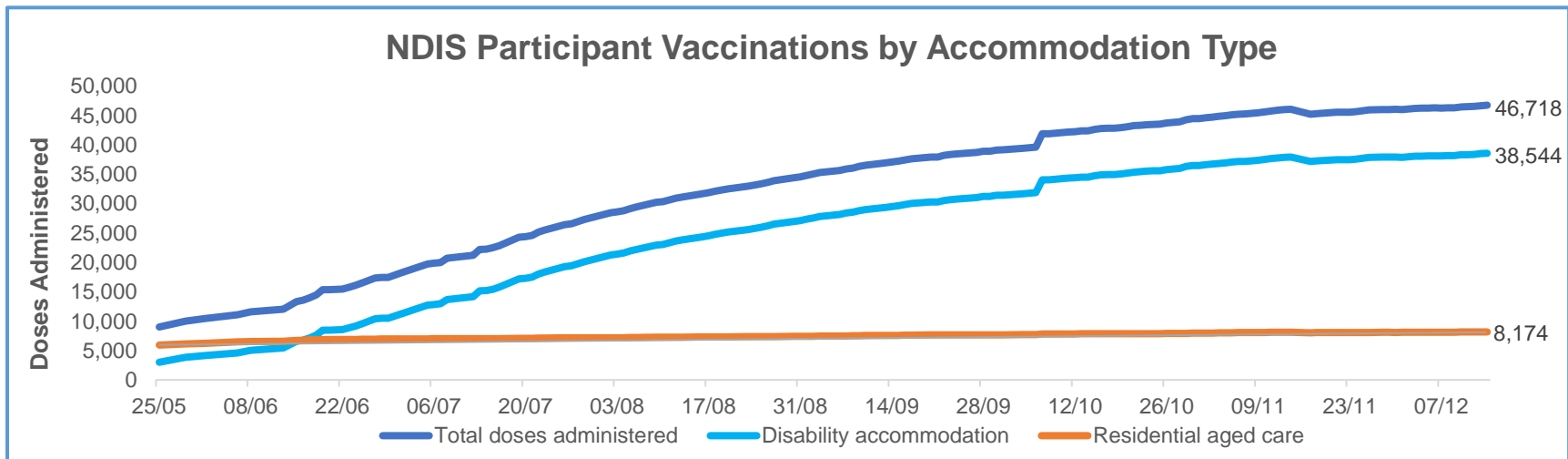
**State level breakdown indicates the residential location and may not align to the state in which the vaccination occurred.

Source: Australian Immunisation Register

Data as at:
14 Dec 2021*

Vaccination rate of people with disability and the disability workforce

Phase 1a – People with disability living in shared accommodation



	Total people with at least one dose	People fully vaccinated	Total number of individuals in cohort	Total doses administered	% People with at least one dose	% People fully vaccinated
NDIS participants living in shared accommodation **	23,782	22,936	27,603	46,718	86.2%	83.1%
NDIS screened workers ***	231,856	223,650	262,707	455,506	88.3%	85.1%



* Updates are available Monday to Friday on participants, and bi-weekly for workers, numbers may be up to four days old.

** Shared accommodation means two or more people with disability living in shared residential accommodation and NDIS participants living in Residential Aged Care accommodation as per the eligibility criteria of Phase 1a. The number of residents changes over time and refinement of methodology can lead to corrections in totals.

*** Total number of workers within the NDIS Commission Worker Screening database who have ever been successfully screened and linked to an NDIS registered provider or participant.

Source: Linkage between National Disability Insurance Agency data, NDIS Quality and Safeguards Commission data and the Australian Immunisation Register.

Residential aged care vaccination rollout

Residential aged care facilities status

100% Commonwealth facilities visited (2,576 planned sites)

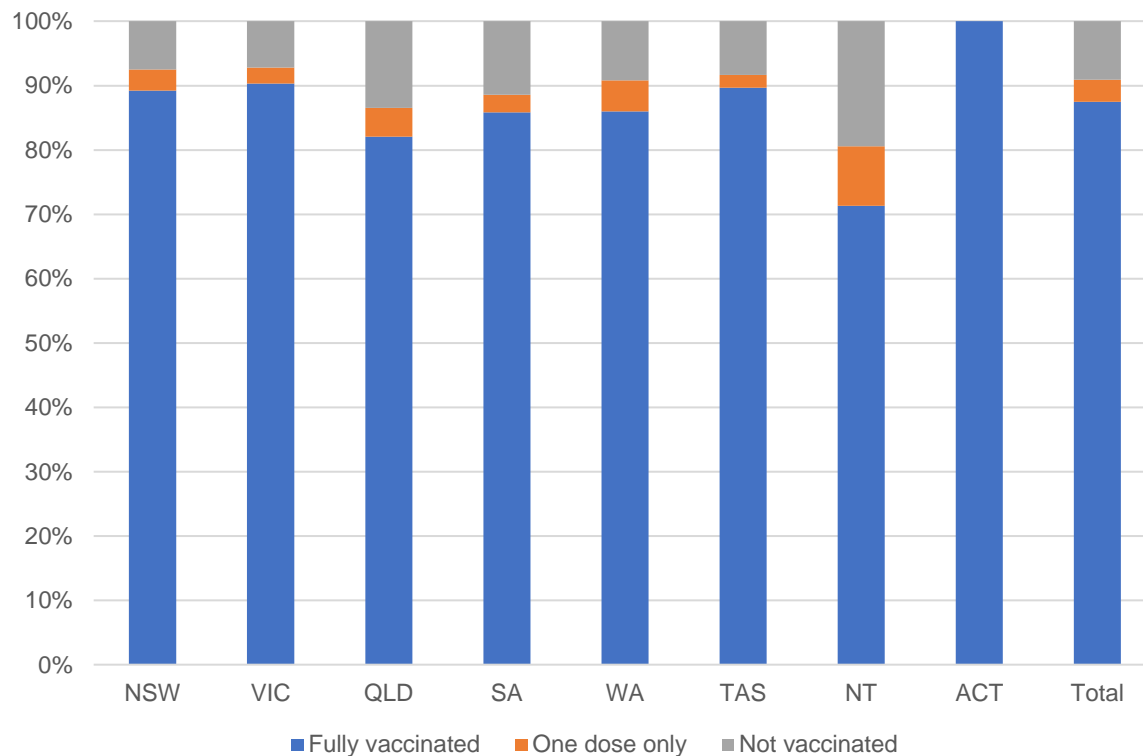
162,591 People fully vaccinated

168,971 People with at least one dose

Australia's COVID-19 Vaccine Roadmap

Data as at:
14 Dec 2021

Aged care resident vaccinations



Aged care worker vaccinations

Jurisdictions	Total workers with at least one dose	Workers fully vaccinated	% Workers with at least one dose	% Workers fully vaccinated
NSW	79,262	79,219	99.7%	99.7%
VIC	71,075	71,073	99.9%	99.9%
QLD	48,968	48,901	99.9%	99.7%
SA	27,606	27,411	100.0%	99.3%
WA	23,811	23,702	99.9%	99.5%
TAS	7,577	7,493	100.0%	98.9%
NT	870	867	100.0%	99.7%
ACT	2,999	2,999	100.0%	100.0%
Total	262,168	261,665	99.9%	99.7%

Source: My Aged Care Portal staff vaccination progress

**Resident vaccination information is reported manually by service providers

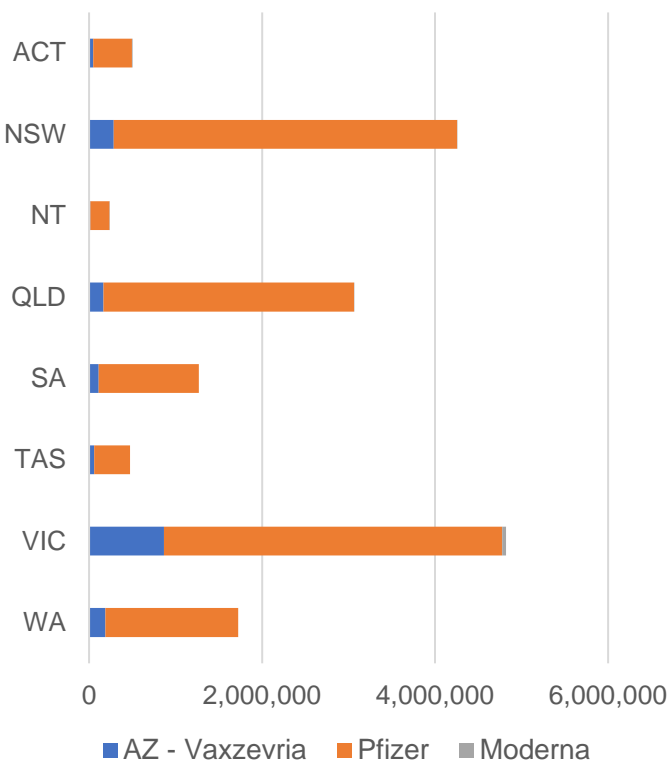
*Status updates are provided by facilities at least once per week. Reporting is updated Monday to Friday to encompass different facility updates being made on different days.

Data is sourced directly from Aged Care Service Providers and is not drawn or closely aligned with data from AIR due to inconsistencies and potential lags in uploading of records.

Data as at:
14 Dec 2021

Jurisdiction administered

Total vaccine doses administered in State and Territory clinics as at 14 December



16,346,590 total vaccine doses administered
in State and Territory clinics as at 14 December
+ 47,435 recorded in the last 24 hours
+ 218,777 recorded in the last 7 days

NSW
4,257,058
(+7,477 daily increase)

VIC
4,820,531
(+10,223 daily increase)

QLD
3,064,783
(+14,336 daily increase)

WA
1,724,507
(+6,343 daily increase)

TAS
472,174
(+22 daily increase)

SA
1,268,779
(+5,836 daily increase)

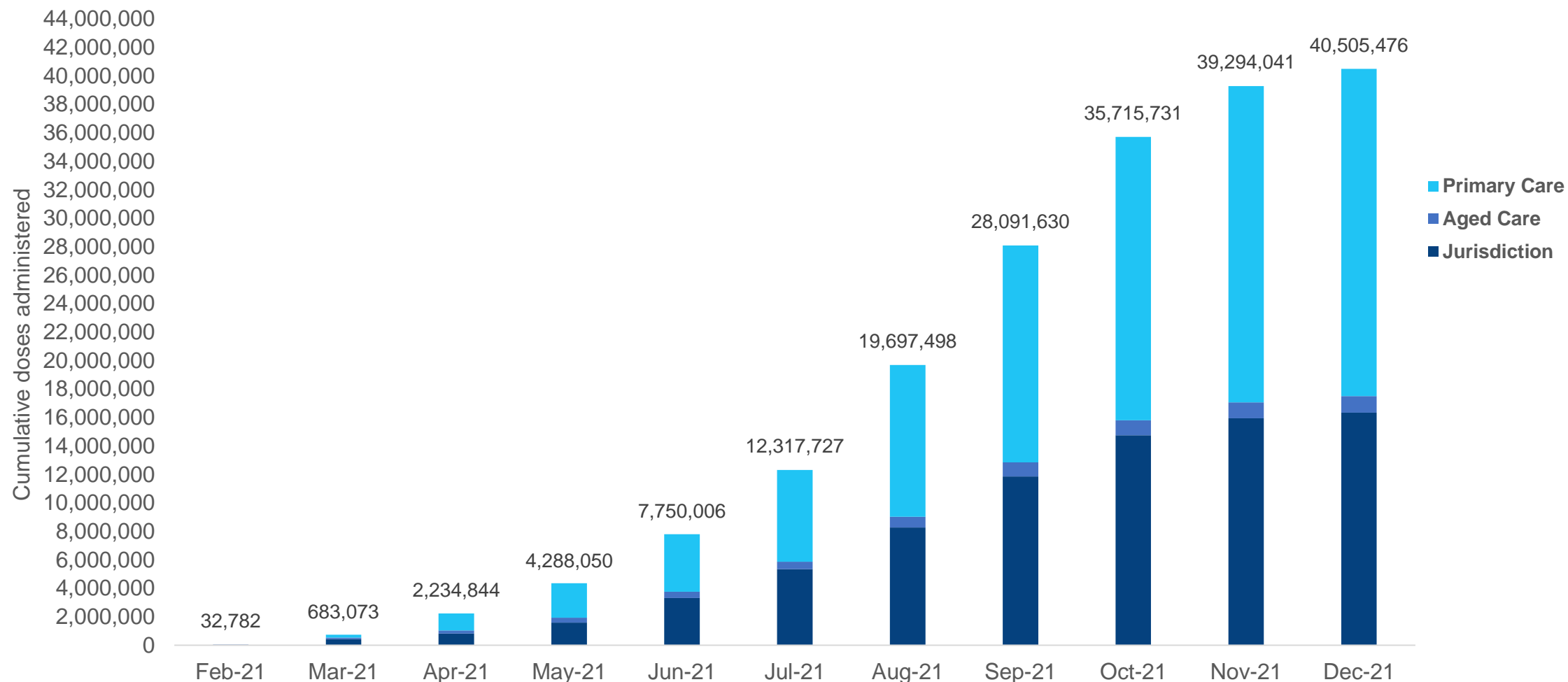
ACT
503,630
(+2,400 daily increase)

NT
235,128
(+798 daily increase)

*Sourced from the Australian Immunisation Register and self-reported data. Numbers are calculated as difference in daily cumulative reported numbers to allow for historical corrections in all self-reported data sources.

Cumulative doses administered by channel

Data as at:
14 Dec 2021



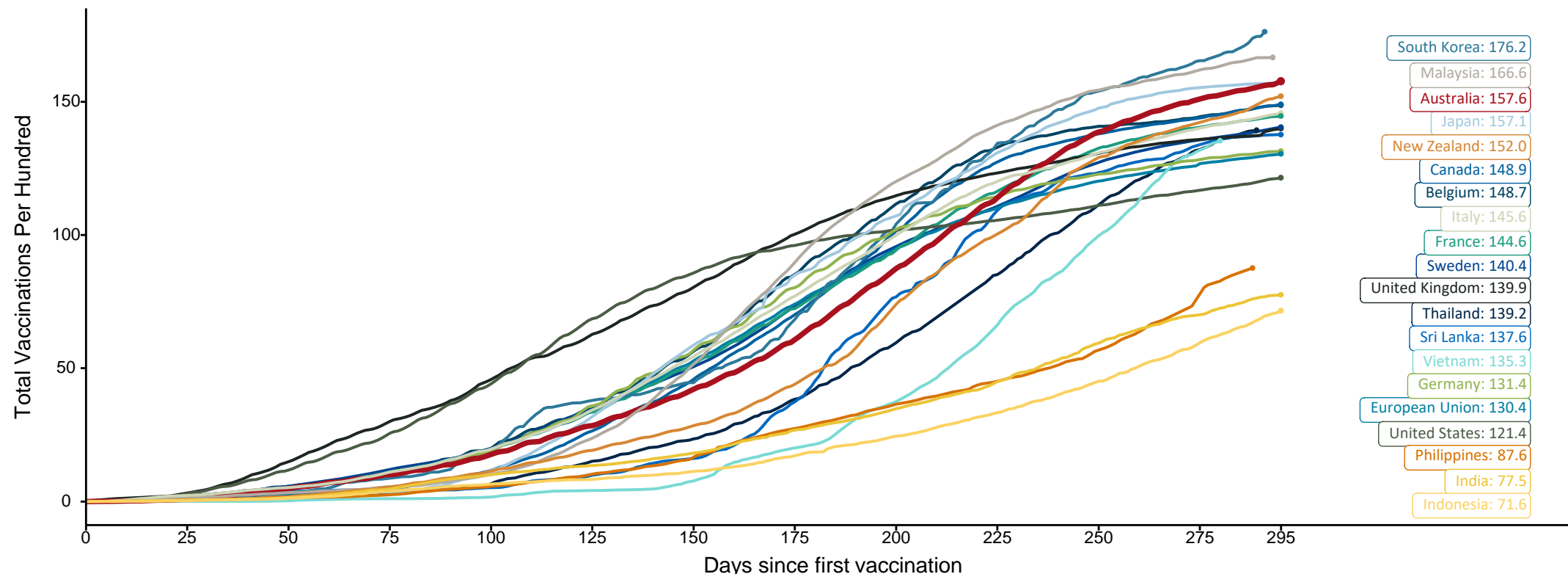
Source: Australian Immunisation Register

Doses at equivalent stages of rollout (Day 295)

Data as at:
14 Dec 2021

The x-axis is truncated at the length of Australia's vaccination program. Countries with intermittent reporting have had their doses per 100 imputed to Australia's current stage of rollout. Israel excluded as it is beyond scale of the graph

Cumulative doses administered (14 Dec): **40,505,476**

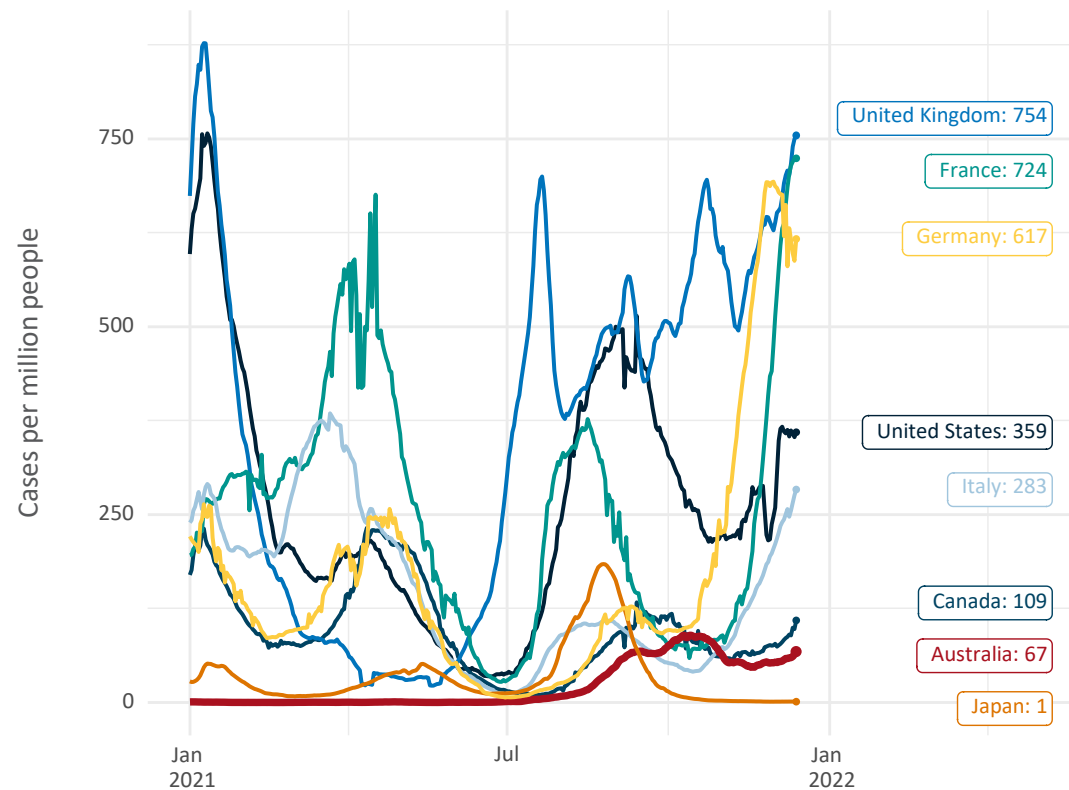


Note: From 15 September 2021, data for Australia includes all doses administered to people 12 and over. Prior to 15 September, data was for 16 and over
Due to data revisions, Singapore has been removed from the chart
Source: Department of Health (Australia), Our World in Data (international)
Latest data: 14 December

International data – COVID-19

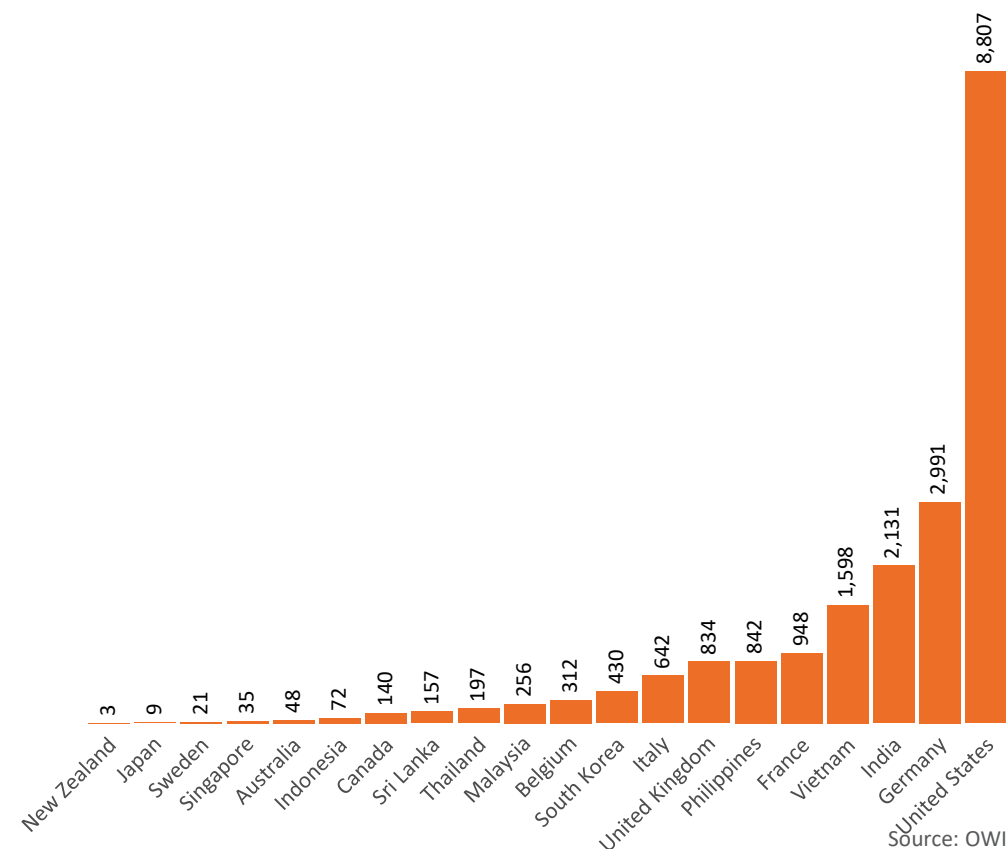
Data as at:
14 Dec 2021

New daily cases per million in 2021, Australia and G7 countries
Smoothed - 7 day average



Source: OWID
Data downloaded: 15 Dec 2021 08:10
Latest data: 13 Dec 2021

COVID-19 deaths in past 7 days - Australia and select countries



Source: OWID
Data downloaded: 15 Dec 2021 08:10
Latest data: 13 Dec 2021

Pandemic Response Payments

Australia's COVID-19
Vaccine Roadmap

Data as at midnight:
14 Dec 2021



COVID Disaster Payment:	5.89 million claims received - 2.19 million individuals paid a total of \$12.59 billion.
\$200 Income Support Payment:	352,000 claims received - 183,000 individuals paid a total of \$268.88 million.
Pandemic Leave Disaster Payment:	151,000 claims received - 129,000 individuals paid a total of \$212.55 million.



COVID Disaster Payment

assisting during a lockdown
event in a Commonwealth
hotspot.

Income Support Payment \$200

for income support
recipients who lost at
least 8 hours of work.

Pandemic Leave Disaster Payment

for those who have to
self-isolate, quarantine
or care.

For more information visit:
servicesaustralia.gov.au

COVID-19 DISASTER PAYMENTS

Victoria

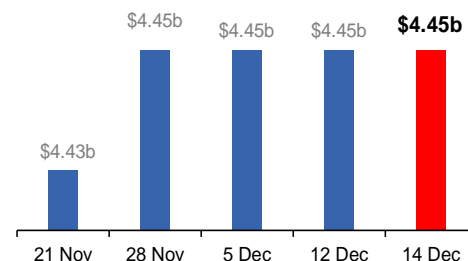
Lockdown (#6) since 6 Aug to 28 Oct
Claiming period ends 9 Dec

**745,000 people have received at least
one COVID Disaster Payment.**

\$4.45b paid out as at 14 Dec 2021.

**\$770,000 paid in initial and reoccurring
payments in the week ending
12 Dec 2021.**

Cumulative payments made by State since
activation on 8 Jun 2021.



Northern Territory

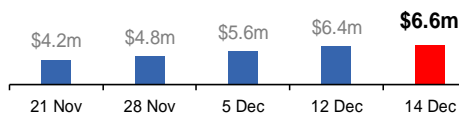
Lockdown (#3) from 16 Nov to 22 Nov
Claiming period ends 27 Dec

**7,200 people have received at least one
COVID Disaster Payment.**

\$6.6m paid out as at 14 Dec 2021.

**\$816,000 paid in initial payments in the
week ending 12 Dec 2021.**

Cumulative payments made by State since
activation on 25 Aug 2021.



New South Wales

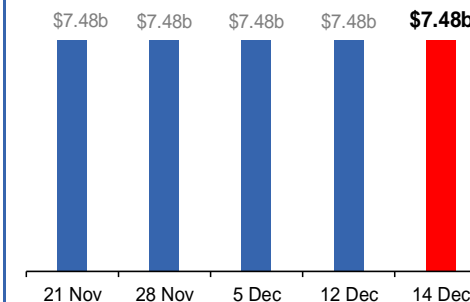
Lockdown from 24 Jun to 10 Oct
Claiming period ended 27 Nov

**1.08m people have received at least
one COVID Disaster Payment.**

\$7.48b paid out as at 14 Dec 2021.

**\$128,000 paid in initial and reoccurring
payments in the week ending
12 Dec 2021.**

Cumulative payments made by State since
activation on 1 Jul 2021.



Australian Capital Territory

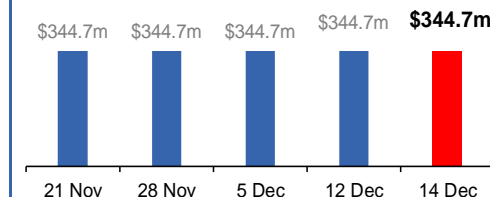
Lockdown since 12 Aug to 14 Oct
Claiming period ended 25 Nov

**65,000 people have received at least
one COVID Disaster Payment.**

\$344.7m paid out as at 14 Dec 2021.

**\$6,000 paid in initial and reoccurring
payments in the week ending
12 Dec 2021.**

Cumulative payments made by State since
activation on 20 Aug 2021.



Data as at midnight:
14 Dec 2021

Pandemic Response Payments (continued)

COVID-19 DISASTER PAYMENTS


Tasmania

Lockdown from 15 Oct to 18 Oct
Claiming period ended 12 Nov

6,900 people have received at least one COVID Disaster Payment.

\$3.6m paid out as at 14 Dec 2021.

Nil paid in initial payments in the week ending 12 Dec 2021.

 Cumulative payments made by State since activation on 22 Oct 2021.




Queensland

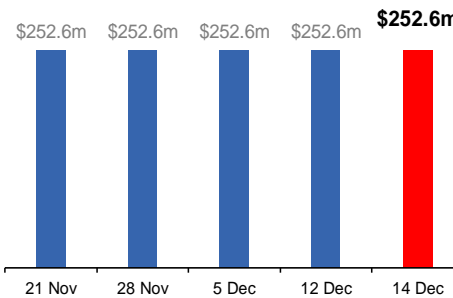
Lockdown from 31 Jul to 11 Aug
Claiming period ended 28 Aug

196,000 people have received at least one COVID Disaster Payment.

\$252.6m paid out as at 14 Dec 2021.

\$5,000 paid in initial and reoccurring payments in the week ending 12 Dec 2021.

 Cumulative payments made by State since activation on 7 Aug 2021.




South Australia

Lockdown from 21 to 27 Jul
Claiming period ended 17 Aug

86,000 people have received at least one COVID Disaster Payment.

\$48.2m paid out as at 14 Dec 2021.

\$1,200 paid in initial and reoccurring payments in the week ending 12 Dec 2021.

 Cumulative payments made by State since activation on 28 Jul 2021.

