



Australian Government
Operation COVID Shield

COVID-19 Vaccine Rollout

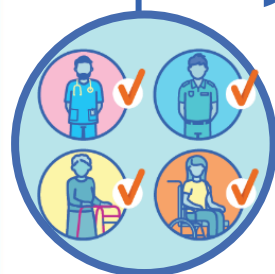
14 December 2021

Data as at:
13 Dec 2021

Total vaccine doses



40,343,561 total vaccine
doses administered nationally as at 13 December
+153,764 recorded in the last 24 hours



19,264,759

people have had at least one
dose

93.4%

of people over the age of 16
have had at least one dose



18,454,334

people are fully vaccinated

89.5%

of people over the age of 16 are
fully vaccinated



771,682

people over the age of 16
who have received more
than two doses

NSW
13,115,209
(+29,054 daily
increase)

VIC
10,855,641
(+26,248 daily
increase)

QLD
7,604,821
(+62,409 daily
increase)

WA
3,809,326
(+16,469 daily
increase)

TAS
881,253
(+2,357 daily
increase)

SA
2,694,730
(+12,097 daily
increase)

ACT
983,695
(+3,477 daily
increase)

NT
398,886
(+1,653 daily
increase)

*Administration state breakdown indicates state in which a vaccine was administered

**Overall dose count includes instances of more than two doses per person in a small number of cases.

Source: Australian Immunisation Register

Data as at:
13 Dec 2021

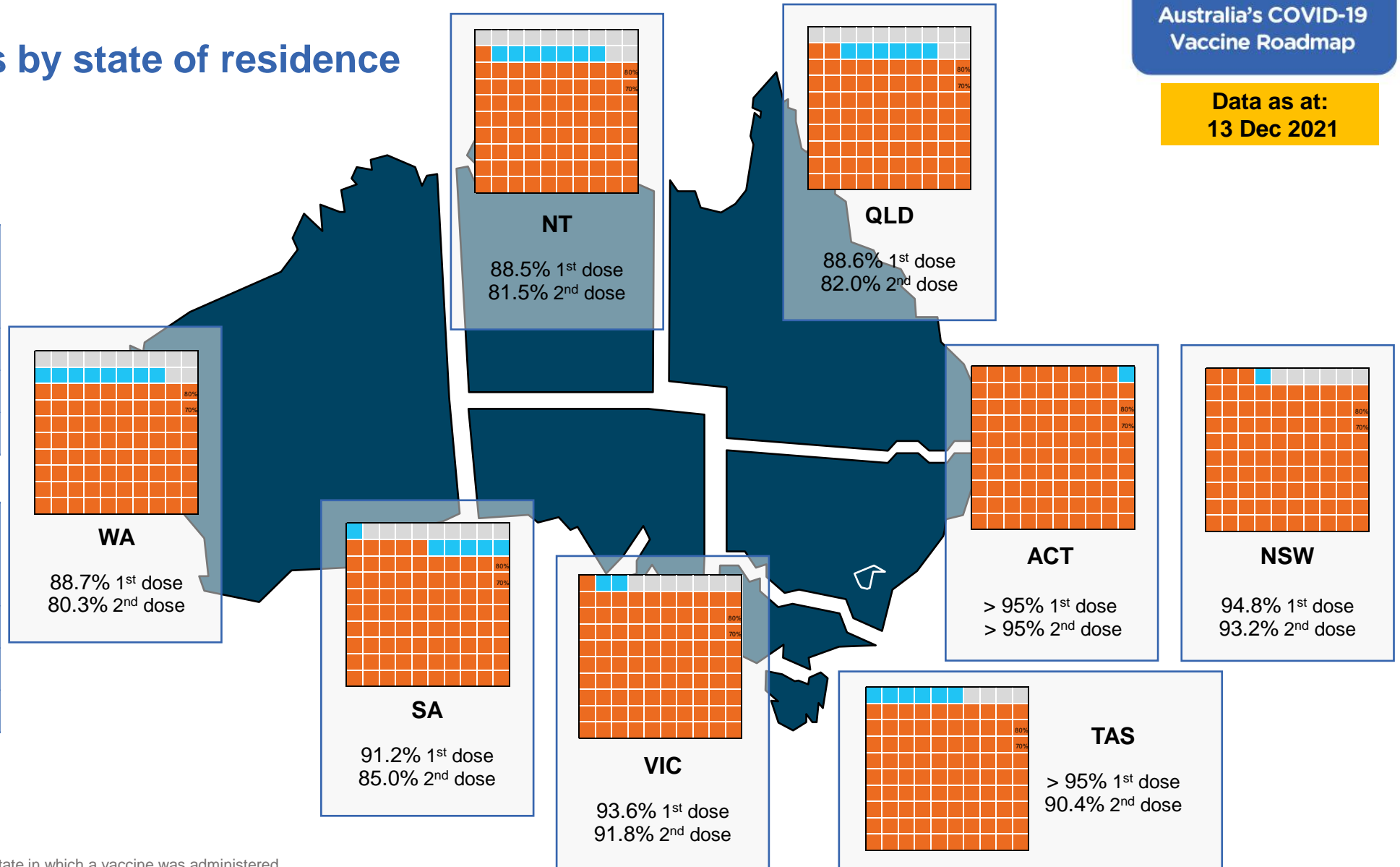
Vaccinations by state of residence

First doses

Age	Today	4 weeks ago	8 weeks ago
16+	93.4%	91.0%	85.8%
50+	>95%	>95%	94.1%
70+	>95%	>95%	>95%

Fully vaccinated

Age	Today	4 weeks ago	8 weeks ago
16+	89.5%	84.0%	70.1%
50+	>95%	91.4%	81.6%
70+	>95%	>95%	87.3%



*Residential state may differ from the state in which a vaccine was administered

Commonwealth and Jurisdiction vaccine doses administered

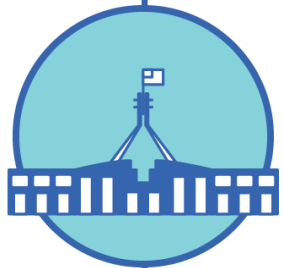
Data as at:
13 Dec 2021



40,343,561 total vaccine
doses administered nationally as at 13 December
+ 153,764 recorded in the last 24 hours



16,299,155
doses administered by state
and territory facilities
+ 58,457
recorded in the last 24 hours



24,044,406
doses administered by
commonwealth facilities
+ 95,307
recorded in the last 24 hours

22,890,305 total vaccine doses
administered in primary care settings
1,154,101 total vaccine doses
administered in aged care and disability
settings

NSW	Jurisdictions	Commonwealth
Cumulative	4,249,581	8,865,628
Daily increase	6,233	22,821

VIC	Jurisdictions	Commonwealth
Cumulative	4,810,308	6,045,333
Daily increase	7,851	18,397

QLD	Jurisdictions	Commonwealth
Cumulative	3,050,447	4,554,374
Daily increase	30,717	31,692

WA	Jurisdictions	Commonwealth
Cumulative	1,718,164	2,091,162
Daily increase	5,323	11,146

TAS	Jurisdictions	Commonwealth
Cumulative	472,152	409,101
Daily increase	246	2,111

SA	Jurisdictions	Commonwealth
Cumulative	1,262,943	1,431,787
Daily increase	5,294	6,803

ACT	Jurisdictions	Commonwealth
Cumulative	501,230	482,465
Daily increase	2,000	1,477

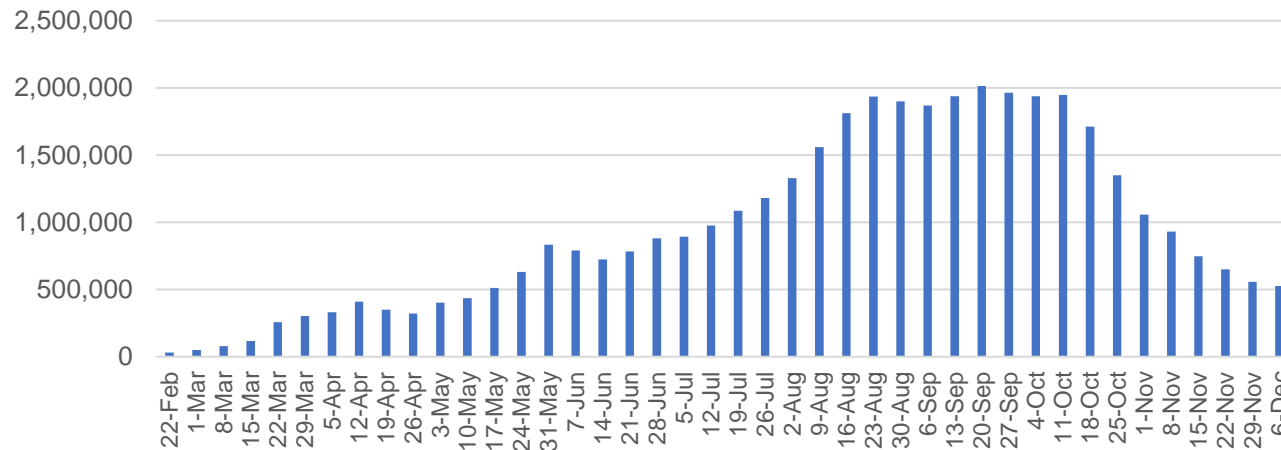
NT	Jurisdictions	Commonwealth
Cumulative	234,330	164,556
Daily increase	793	860

Vaccine milestone charts

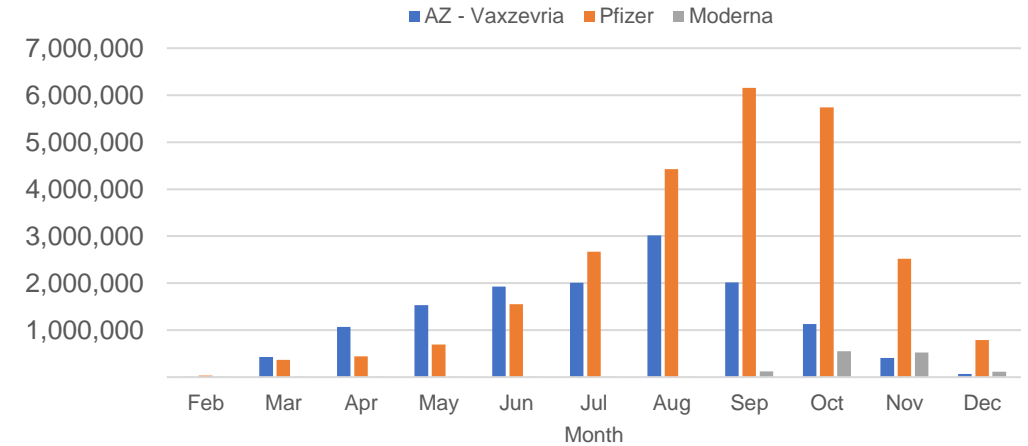
Data as at:
13 Dec 2021

Australia's COVID-19
Vaccine Roadmap

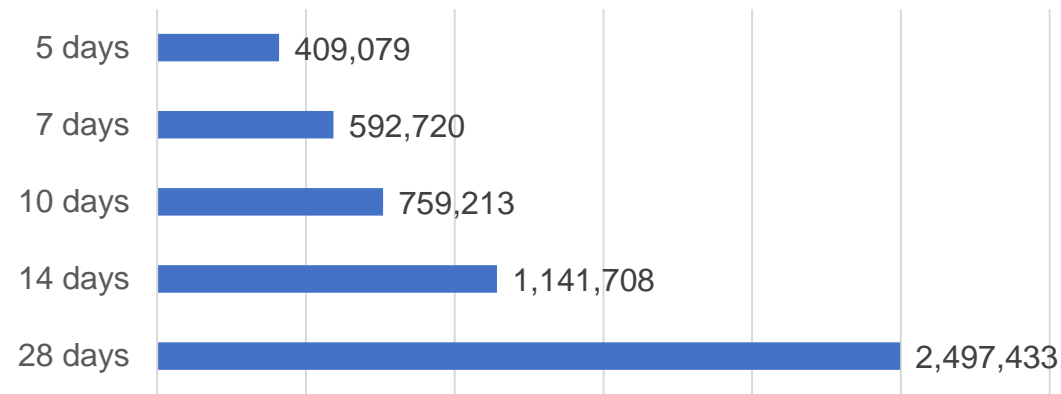
Doses Administered by Week



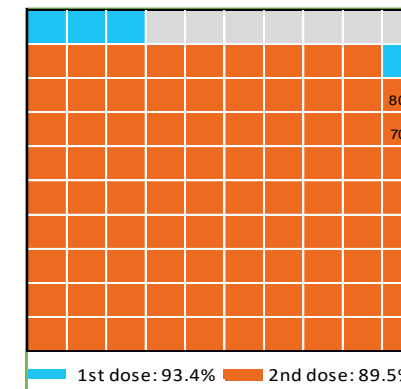
Doses by administration month and vaccine type



Doses Reported



Eligible population percentage coverage



*Sourced from the Australian Immunisation Register.

*Each square represents 1% of the national population. Squares are filled as milestones are achieved.

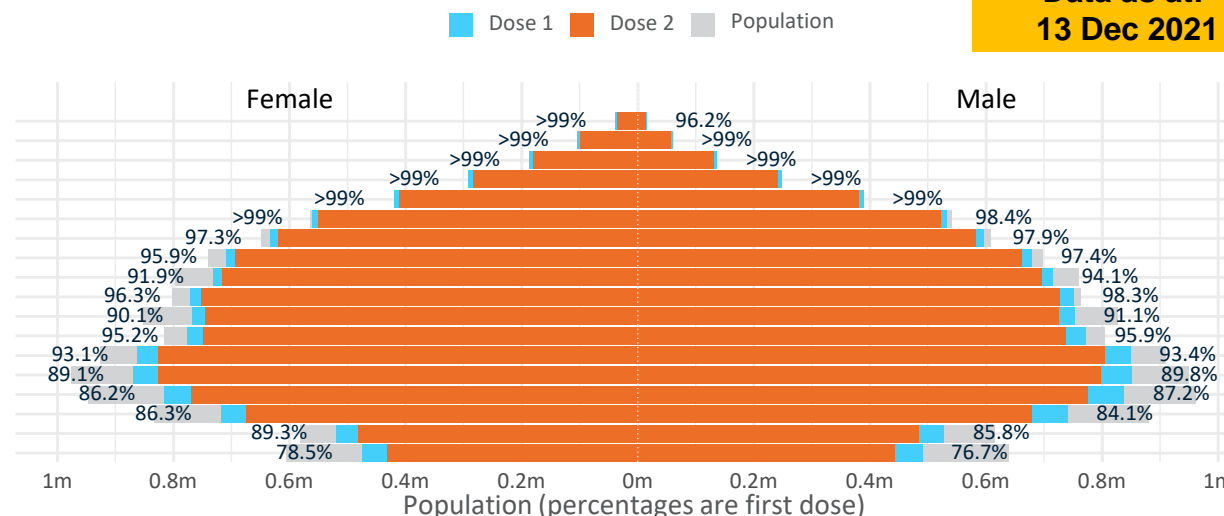
Doses by age and sex

First and second doses by age and sex

Australia's COVID-19
Vaccine Roadmap

Data as at:
13 Dec 2021

Age	Dose 1	Dose 2
95+	53,435 (>99%)	49,377 (93.3%)
90-94	163,358 (>99%)	155,053 (97.9%)
85-89	323,696 (>99%)	311,474 (98.5%)
80-84	539,638 (>99%)	524,978 (>99%)
75-79	809,483 (>99%)	792,144 (>99%)
70-74	1,094,031 (>99%)	1,072,029 (97.0%)
65-69	1,229,410 (97.7%)	1,202,347 (95.6%)
60-64	1,389,894 (96.7%)	1,355,235 (94.3%)
55-59	1,447,987 (93.1%)	1,412,080 (90.8%)
50-54	1,523,454 (97.4%)	1,479,032 (94.5%)
45-49	1,521,229 (90.7%)	1,469,976 (87.7%)
40-44	1,549,919 (95.7%)	1,488,352 (91.9%)
35-39	1,715,541 (93.5%)	1,634,021 (89.0%)
30-34	1,728,525 (89.9%)	1,629,490 (84.7%)
25-29	1,663,424 (87.2%)	1,552,531 (81.4%)
20-24	1,464,702 (85.5%)	1,358,766 (79.4%)
16-19	1,047,033 (87.6%)	967,449 (80.9%)
12-15	965,617 (77.6%)	874,772 (70.3%)



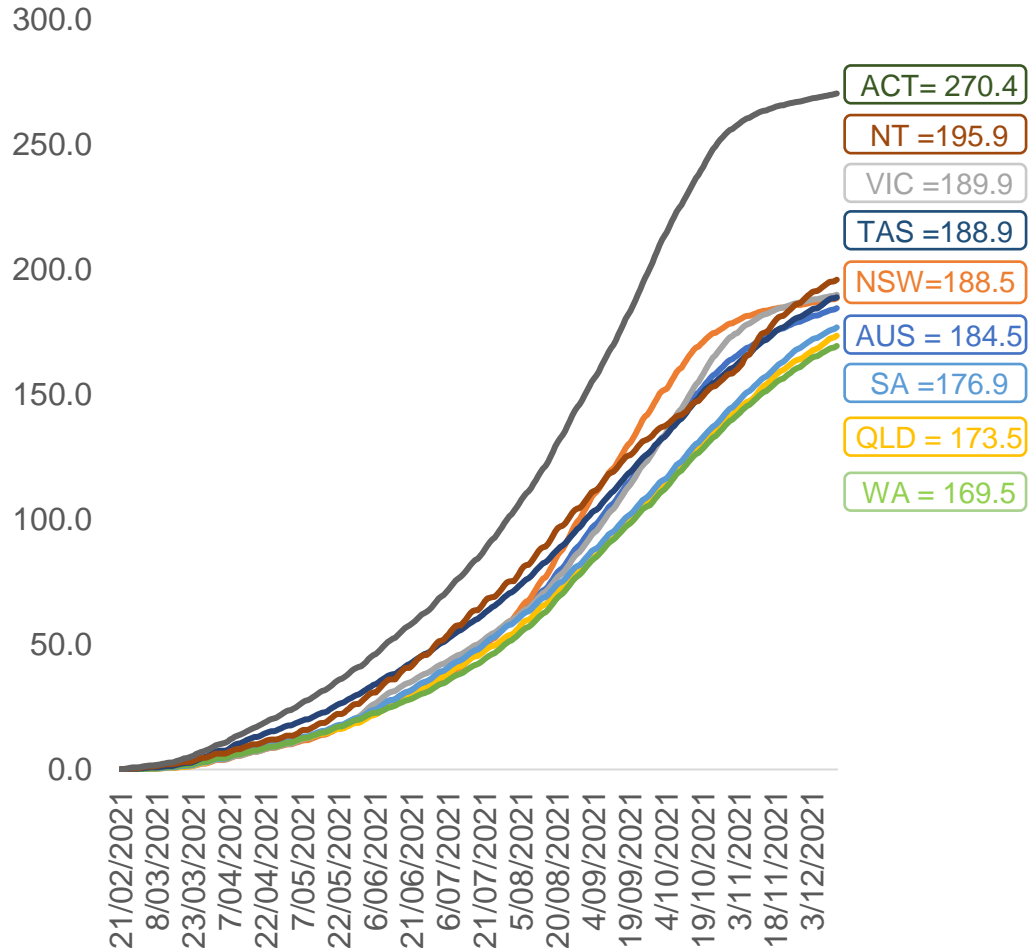
	AUS	ACT	NSW	NT	QLD	SA	TAS	VIC	WA
16 and over - dose 1	19,264,759	346,415	6,223,930	168,601	3,644,371	1,313,942	423,075	5,061,404	1,876,623
16 and over - dose 2	18,454,334	340,824	6,119,359	155,286	3,373,810	1,223,638	397,972	4,965,575	1,697,457
16 and over - population	20,619,959*	344,037	6,565,651	190,571	4,112,707	1,440,400	440,172	5,407,574	2,114,978
16 and over % with dose 1	93.43%	>99%	94.80%	88.47%	88.61%	91.22%	96.12%	93.60%	88.73%
16 and over % with dose 2	89.50%	>99%	93.20%	81.48%	82.03%	84.95%	90.41%	91.83%	80.26%
50 and over - dose 1	8,574,386	134,075	2,774,488	56,369	1,671,126	649,223	213,988	2,175,886	842,368
50 and over - dose 2	8,353,749	132,362	2,738,800	53,830	1,607,408	621,668	206,537	2,142,179	800,208
50 and over - population	8,749,703	127,802	2,807,793	62,280	1,758,855	674,384	220,036	2,211,211	885,370
50 and over % with dose 1	98.00%	>99%	98.81%	90.51%	95.01%	96.27%	97.25%	98.40%	95.14%
50 and over % with dose 2	95.47%	>99%	97.54%	86.43%	91.39%	92.18%	93.87%	96.88%	90.38%
70 and over - dose 1	2,983,641	43,758	981,374	11,582	574,634	242,691	78,533	751,136	278,149
70 and over - dose 2	2,905,055	43,030	965,097	11,067	555,216	232,738	75,693	736,476	266,360
70 and over - population	2,934,706	39,946	962,606	12,343	577,767	240,514	77,155	743,519	280,281
70 and over % with dose 1	>99%	>99%	>99%	93.83%	>99%	>99%	>99%	>99%	>99%
70 and over % with dose 2	98.99%	>99%	>99%	89.66%	96.10%	96.77%	98.11%	>99%	95.03%
12 to 15 - dose 1	965,617	19,739	317,674	9,759	180,884	59,396	20,081	270,685	79,966
12 to 15 - dose 2	874,772	19,030	303,532	8,045	155,135	49,470	17,291	251,752	64,576
12 to 15 - population	1,243,990	19,693	390,330	13,060	270,146	82,747	26,308	308,611	132,869
12 to 15 % with dose 1	77.62%	>99%	81.39%	74.72%	66.96%	71.78%	76.33%	87.71%	60.18%
12 to 15 % with dose 2	70.32%	96.63%	77.76%	61.60%	57.43%	59.78%	65.73%	81.58%	48.60%

*National population will not equal sum of listed jurisdictions due to a small number of people counted in national population residing in some 'other' territories. Sum of state doses will not add to national total as some records are unable to be geocoded to a State or Territory.

Doses sourced from Australian Immunisation Register, population from ABS ERP June 2020

Vaccinations by location

Cumulative total doses administered vs eligible state populations*

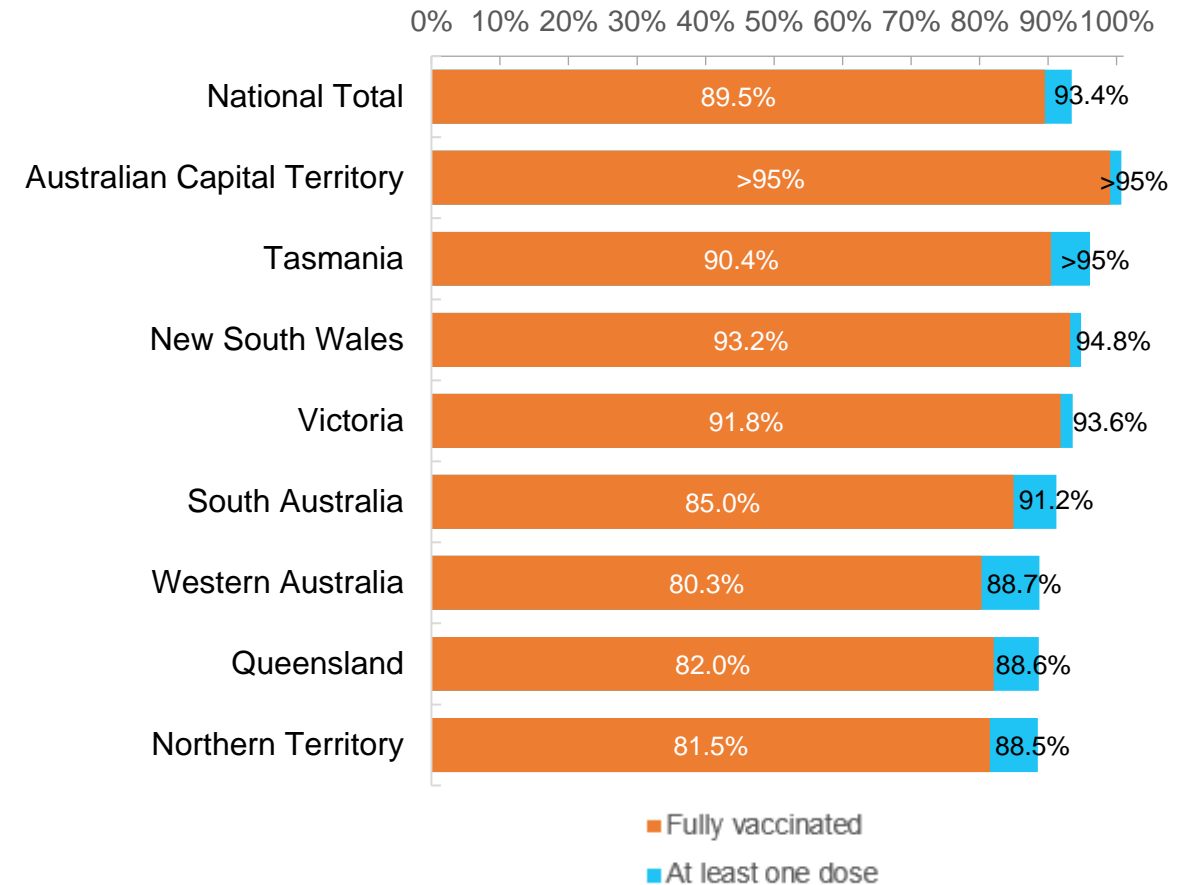


*Not an indication of percentage vaccinated, numbers will exceed 100 due to multiple doses required per person of the population. All doses are included, including those for the 12-15 cohort, and are based on vaccination provider location.

Data as at:
13 Dec 2021

Australia's COVID-19
Vaccine Roadmap

First and Second Doses by state of residence



Aboriginal and Torres Strait Islander peoples

Number of people vaccinated

Data as at:
07 Dec 2021
Updated weekly

Australia's COVID-19
Vaccine Roadmap



399,610

people over the age of 16
have had at least one dose

75.7%

of people over the age of 16
have had at least one dose



344,716

people over the age of 16
are fully vaccinated

65.3%

of people over the age of 16 are
fully vaccinated



**40,103
(56.0%)**

people aged 12-15 years
have had at least one dose

172 Aboriginal community controlled health services (ACCHS)

0#	50	26	40	12	3	21	18
ACT	NSW	NT	QLD	SA	TAS	VIC	WA

Medicare Address State ^{##}	Individuals Dose 1	Individuals Dose 1 %	Individuals Dose 2	Individuals Dose 2 %
Australian Capital Territory	4,928	90.4%	4,726	86.7%
New South Wales	137,349	85.8%	132,020	82.5%
Northern Territory	37,429	81.5%	30,051	65.5%
Queensland	99,232	69.4%	79,141	55.3%
South Australia	17,931	70.4%	14,501	57.0%
Tasmania	13,936	81.3%	12,639	73.7%
Victoria	35,617	88.0%	33,888	83.7%
Western Australia	38,957	61.2%	27,383	43.1%
Unknown/Other Territories	14,231	53.6%	10,367	39.0%
Totals	399,610	75.7%	344,716	65.3%

Source: Australian Immunisation Register

*Identifying as Aboriginal and Torres Strait Islander is optional and the estimated population may be under reported.

**Includes all Aboriginal and Torres Strait Islander peoples who have received a vaccination, not limited to those administered in an ACCHS setting

#ACCHS in the ACT are currently operating as a Commonwealth Vaccine Clinics so not included to avoid double counting

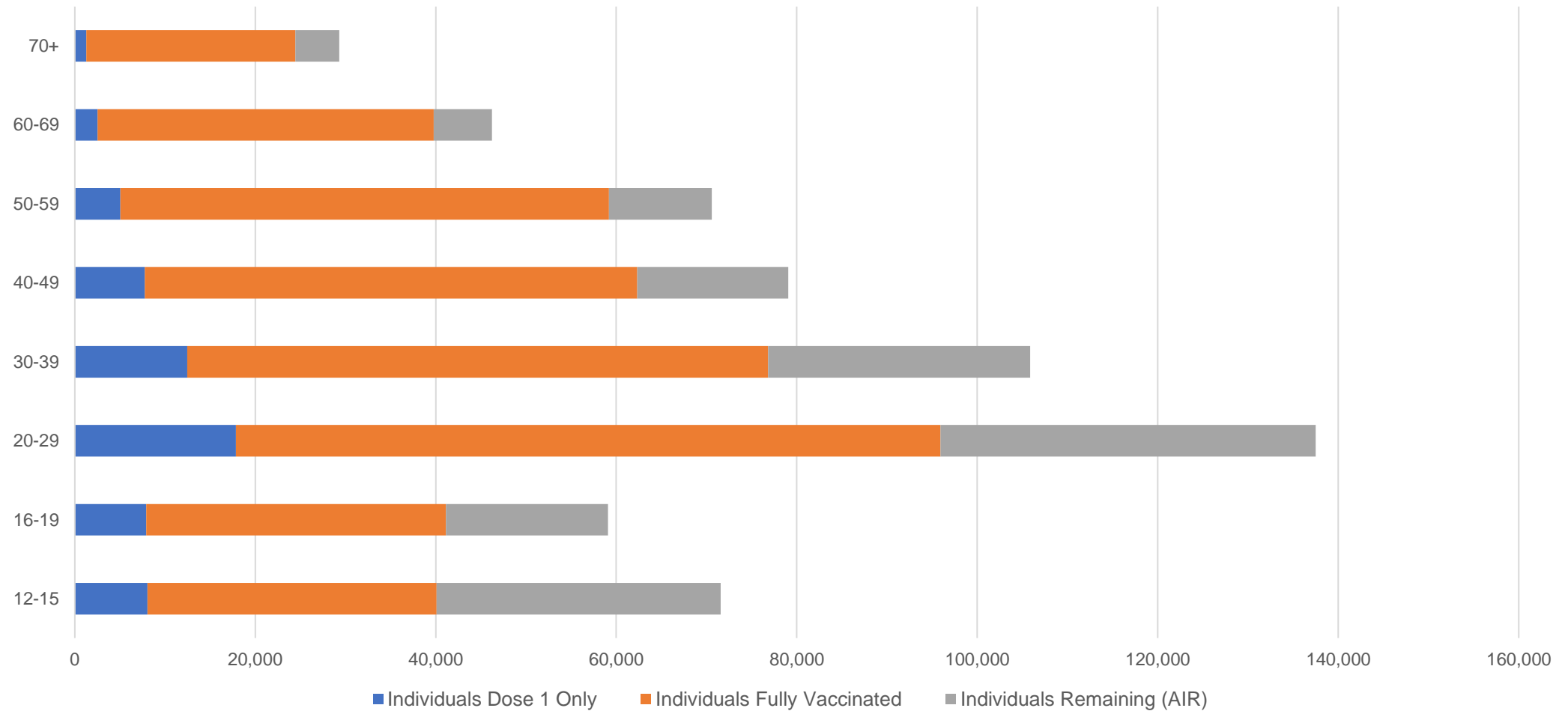
##The above table includes all identified Aboriginal and Torres Strait Islander people who are aged 16 and above by their state of residence.

Aboriginal and Torres Strait Islander peoples

Number of people vaccinated by age

Data as at:
07 Dec 2021
Updated weekly

Australia's COVID-19
Vaccine Roadmap



Source: Australian Immunisation Register

Data as at:
13 Dec 2021

Commonwealth primary care



Primary care vaccine administration sites

5,661	137	173	3,459
GPs	CVCs	ACCHS	Pharmacies



22,890,305 total vaccine doses administered
primary care settings as at 13 December
+ 93,197 recorded in the last 24 hours

Primary care vaccinations by provider type

	Doses administered	Daily increase	7 day increase
General Practice* includes other Commonwealth	20,325,589	58,023	251,907
Pharmacy	2,564,716	35,174	124,269

NSW
8,360,453
(+21,975 daily increase)

VIC
5,791,139
(+18,107 daily increase)

QLD
4,317,327
(+31,445 daily increase)

WA
1,994,018
(+10,470 daily increase)

TAS
394,477
(+2,138 daily increase)

SA
1,364,383
(+6,375 daily increase)

ACT
359,164
(+1,415 daily increase)

NT
145,329
(+791 daily increase)

164,015 doses administered to persons
residing in other territories or with
missing residential information

*General practice includes Commonwealth Vaccination Clinics, Aboriginal Community Health Centres, Royal Flying Doctor Service and other Commonwealth vaccination facilities

Source: Australian Immunisation Register

Data as at:
13 Dec 2021

Commonwealth aged care and disability doses administered



1,154,101 (+ 2,110 last 24 hours)

Total vaccine doses administered in aged care and disability facilities as at 13 December

Number of doses administered as part of the Commonwealth aged and disability care rollout

NSW
531,519
(+678 daily increase)

VIC
214,463
(+215 daily increase)

QLD
179,086
(+455 daily increase)

WA
82,456
(+225 daily increase)

TAS
20,964
(-3# daily increase)

SA
75,932
(+398 daily increase)

ACT
15,129
(-5# daily increase)

NT
6,603
(-5# daily increase)

27,949

doses administered to persons
residing in other territories or with
missing residential information

*Sourced from the Australian Immunisation Register. Includes all persons vaccinated at participating residential aged care, disability and related industry settings.

**State level breakdown indicates the residential location and may not align to the state in which the vaccination occurred.

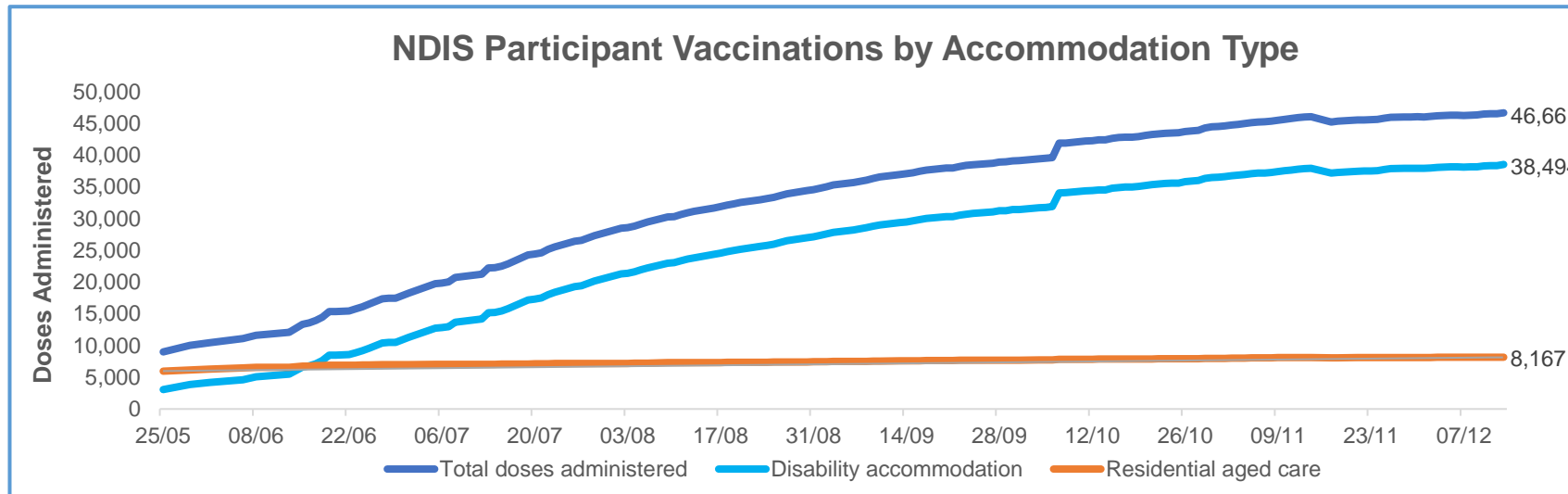
#Numbers are calculated as difference in daily cumulative reported numbers to allow for historical corrections in all data sources. This can occasionally result in negative numbers, such as for TAS, ACT and NT, where historical details about doses have been updated.

Source: Australian Immunisation Register

Data as at:
13 Dec 2021*

Vaccination rate of people with disability and the disability workforce

Phase 1a – People with disability living in shared accommodation



	Total people with at least one dose	People fully vaccinated	Total number of individuals in cohort	Total doses administered	% People with at least one dose	% People fully vaccinated
NDIS participants living in shared accommodation **	23,766	22,895	27,603	46,661	86.1%	82.9%
NDIS screened workers ***	231,856	223,650	262,707	455,506	88.3%	85.1%

* Updates are available Monday to Friday on participants, and bi-weekly for workers, numbers may be up to four days old.

** Shared accommodation means two or more people with disability living in shared residential accommodation and NDIS participants living in Residential Aged Care accommodation as per the eligibility criteria of Phase 1a. The number of residents changes over time and refinement of methodology can lead to corrections in totals.

*** Total number of workers within the NDIS Commission Worker Screening database who have ever been successfully screened and linked to an NDIS registered provider or participant.

Source: Linkage between National Disability Insurance Agency data, NDIS Quality and Safeguards Commission data and the Australian Immunisation Register.



Residential aged care vaccination rollout

Residential aged care facilities status

100% Commonwealth facilities visited (2,574 planned sites)

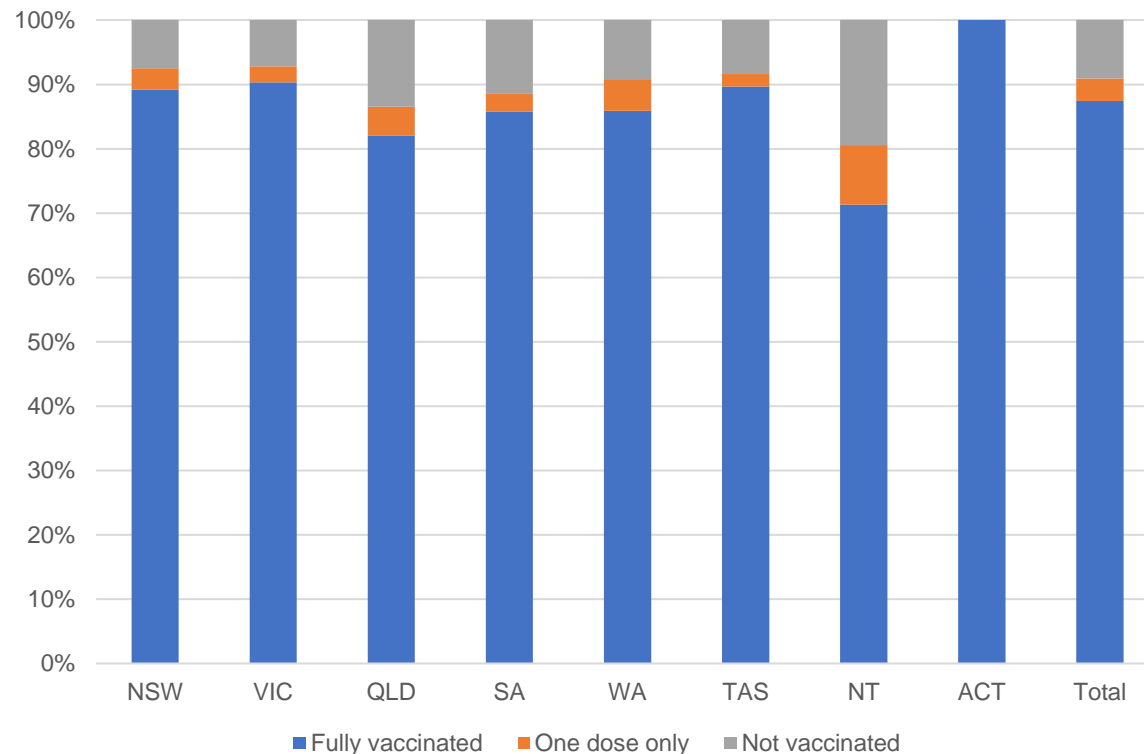
162,512 People fully vaccinated

168,912 People with at least one dose

Australia's COVID-19 Vaccine Roadmap

Data as at:
13 Dec 2021

Aged care resident vaccinations



Aged care worker vaccinations

Jurisdictions	Total workers with at least one dose	Workers fully vaccinated	% Workers with at least one dose	% Workers fully vaccinated
NSW	79,483	79,419	100.0%	99.9%
VIC	71,172	71,172	99.8%	99.8%
QLD	49,048	48,952	100.0%	99.8%
SA	27,685	27,474	100.0%	99.2%
WA	23,741	23,633	100.0%	99.5%
TAS	7,557	7,467	100.0%	98.8%
NT	867	864	100.0%	99.7%
ACT	2,996	2,996	100.0%	100.0%
Total	262,549	261,977	99.9%	99.7%

Source: My Aged Care Portal staff vaccination progress

**Resident vaccination information is reported manually by service providers

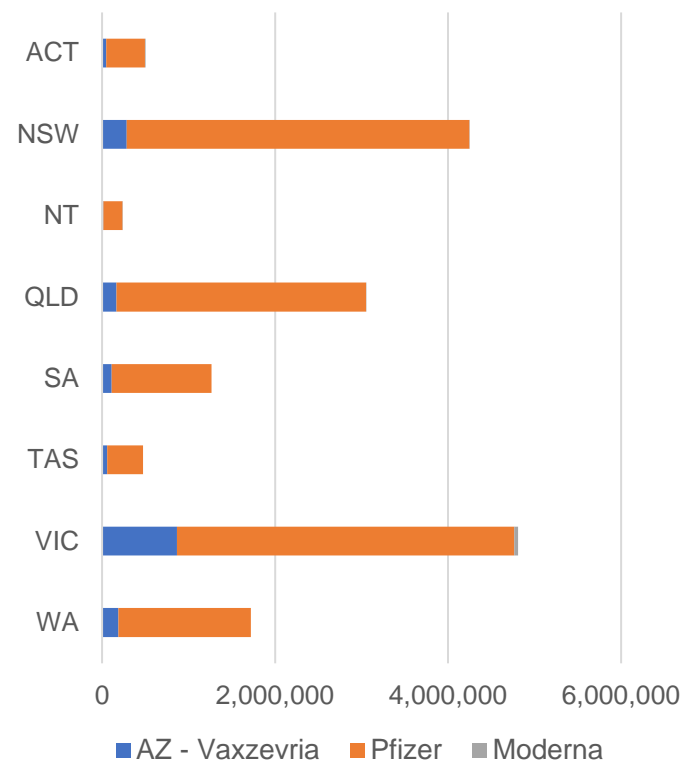
*Status updates are provided by facilities at least once per week. Reporting is updated Monday to Friday to encompass different facility updates being made on different days.

Data is sourced directly from Aged Care Service Providers and is not drawn or closely aligned with data from AIR due to inconsistencies and potential lags in uploading of records.

Data as at:
13 Dec 2021

Jurisdiction administered

Total vaccine doses administered in State and Territory clinics as at 13 December



16,299,155 total vaccine doses administered
in State and Territory clinics as at 13 December
+ **58,457** recorded in the last 24 hours
+ **200,010** recorded in the last 7 days

NSW
4,249,581
(+6,233 daily
increase)

VIC
4,810,308
(+7,851 daily
increase)

QLD
3,050,447
(+30,717 daily
increase)

WA
1,718,164
(+5,323 daily
increase)

TAS
472,152
(+246 daily
increase)

SA
1,262,943
(+5,294 daily
increase)

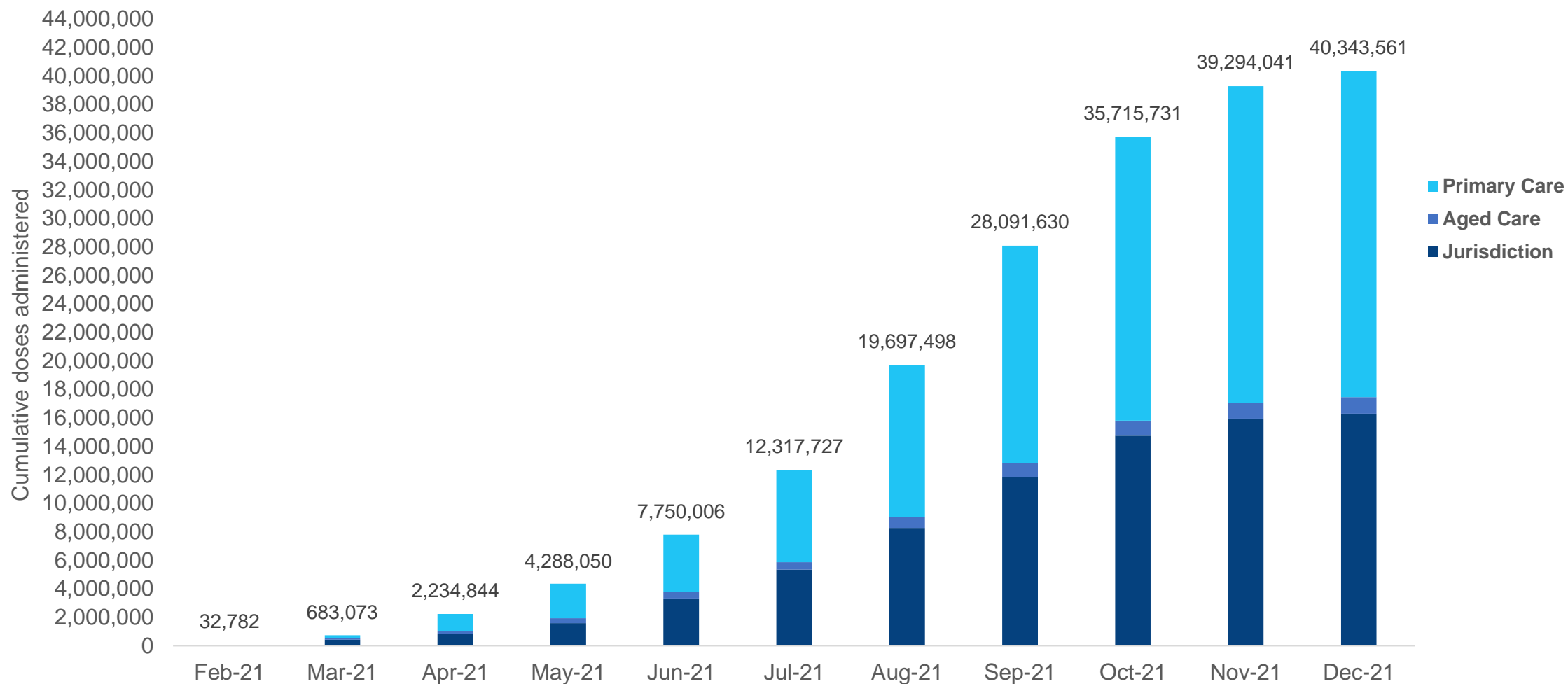
ACT
501,230
(+2,000 daily
increase)

NT
234,330
(+793 daily
increase)

*Sourced from the Australian Immunisation Register and self-reported data. Numbers are calculated as difference in daily cumulative reported numbers to allow for historical corrections in all self-reported data sources.

Cumulative doses administered by channel

Data as at:
13 Dec 2021



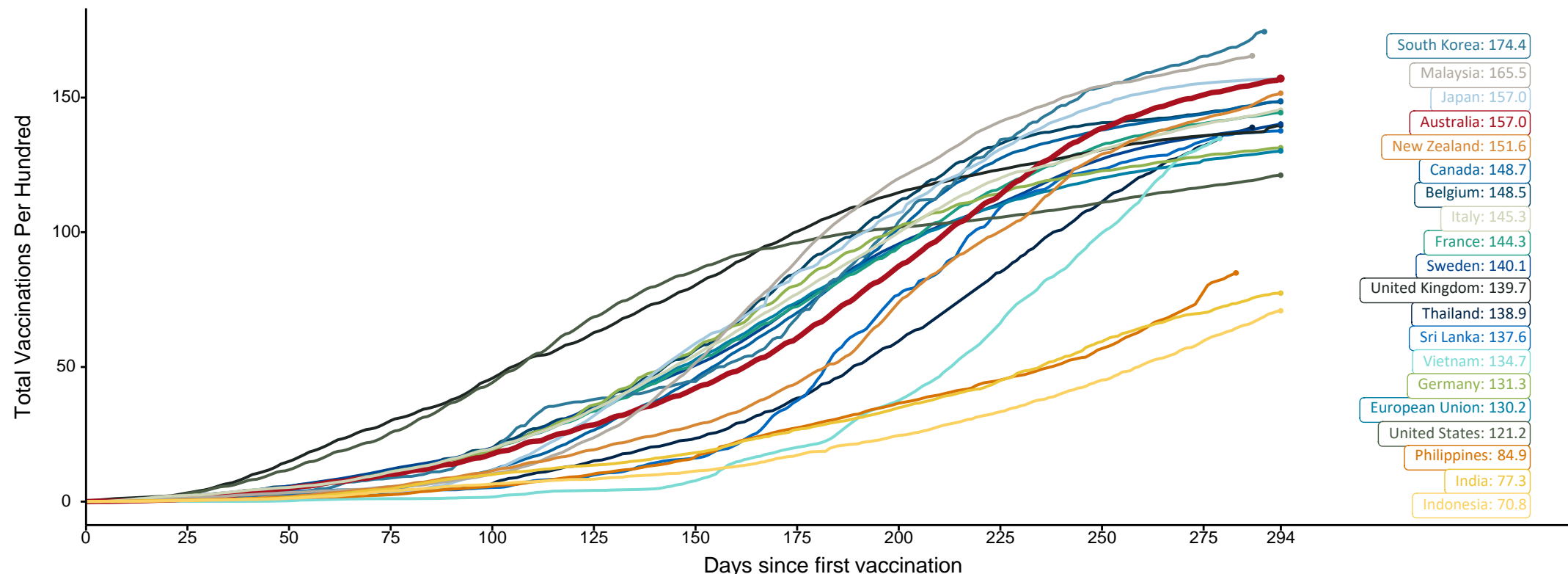
Source: Australian Immunisation Register

Doses at equivalent stages of rollout (Day 294)

Data as at:
13 Dec 2021

The x-axis is truncated at the length of Australia's vaccination program. Countries with intermittent reporting have had their doses per 100 imputed to Australia's current stage of rollout. Israel excluded as it is beyond scale of the graph

Cumulative doses administered (13 Dec): **40,343,561**

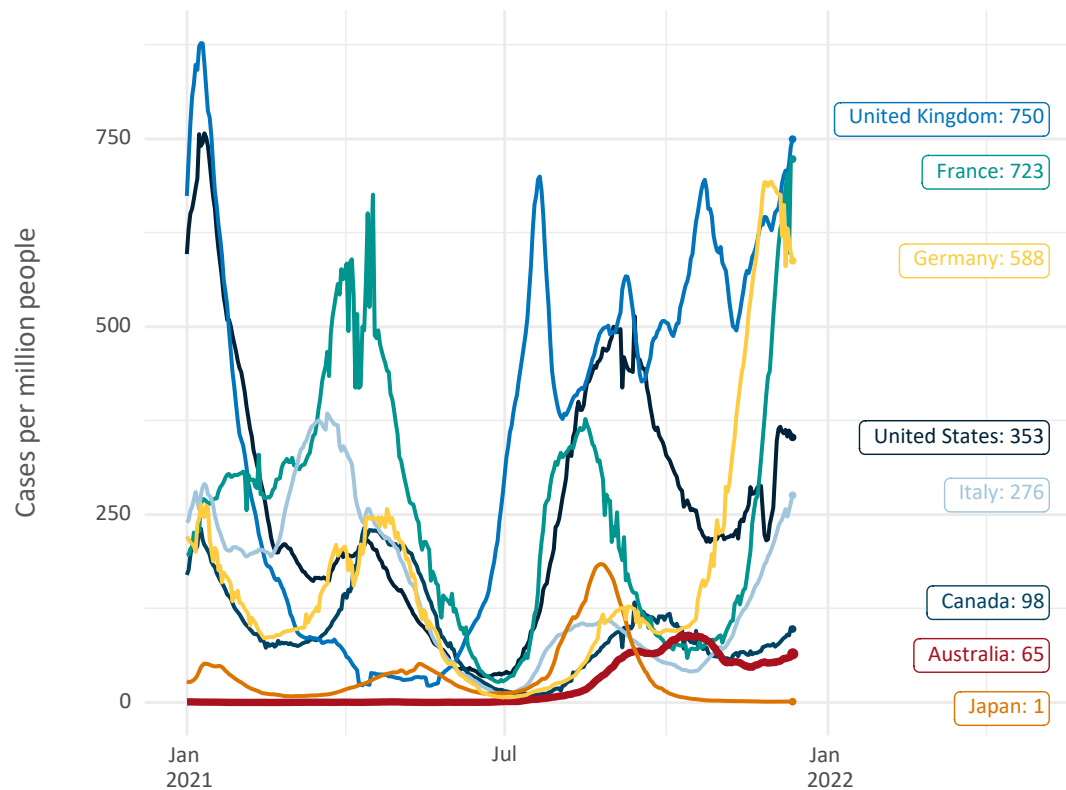


Note: From 15 September 2021, data for Australia includes all doses administered to people 12 and over. Prior to 15 September, data was for 16 and over
Due to data revisions, Singapore has been removed from the chart
Source: Department of Health (Australia), Our World in Data (international)
Latest data: 13 December

Data as at:
13 Dec 2021

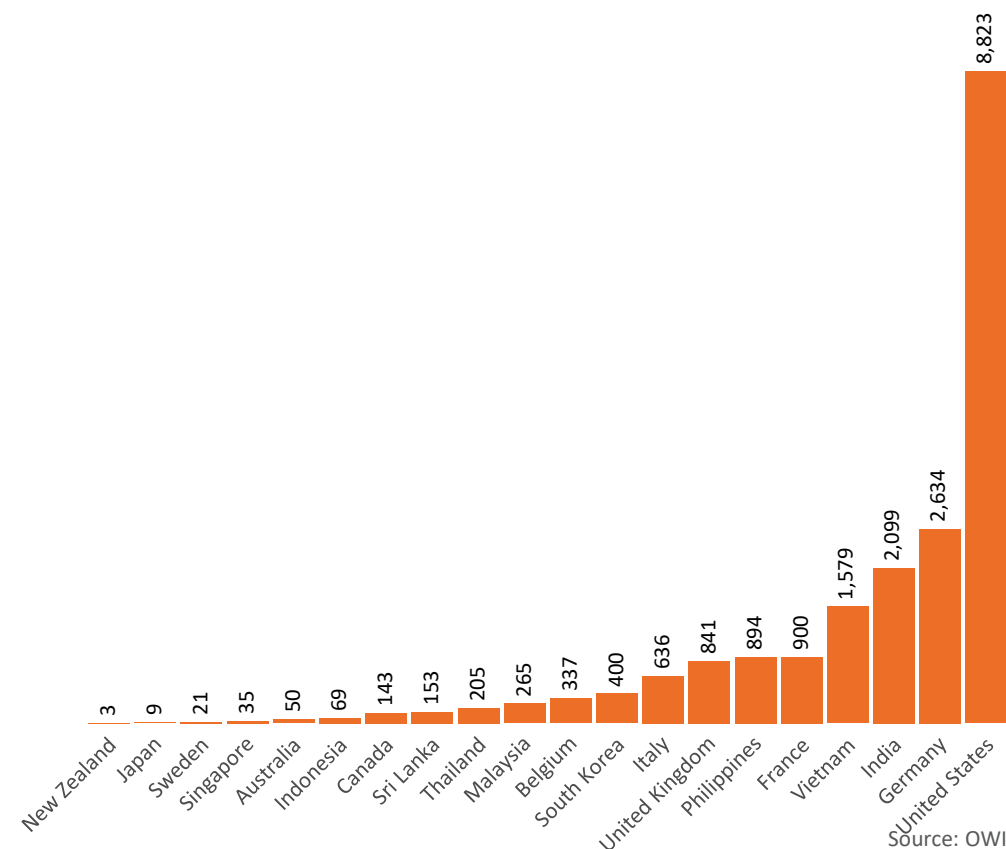
International data – COVID-19

New daily cases per million in 2021, Australia and G7 countries
Smoothed - 7 day average



Source: OWID
Data downloaded: 14 Dec 2021 08:11
Latest data: 12 Dec 2021

COVID-19 deaths in past 7 days - Australia and select countries



Source: OWID
Data downloaded: 14 Dec 2021 08:11
Latest data: 12 Dec 2021

Pandemic Response Payments

Australia's COVID-19
Vaccine Roadmap

Data as at midnight:
13 Dec 2021



COVID Disaster Payment:	5.89 million claims received - 2.19 million individuals paid a total of \$12.59 billion.
\$200 Income Support Payment:	352,000 claims received - 183,000 individuals paid a total of \$268.88 million.
Pandemic Leave Disaster Payment:	150,000 claims received - 129,000 individuals paid a total of \$211.81 million.



COVID Disaster Payment

assisting during a lockdown
event in a Commonwealth
hotspot.

Income Support Payment \$200

for income support
recipients who lost at
least 8 hours of work.

Pandemic Leave Disaster Payment

for those who have to
self-isolate, quarantine
or care.

For more information visit:
servicesaustralia.gov.au

COVID-19 DISASTER PAYMENTS

Victoria

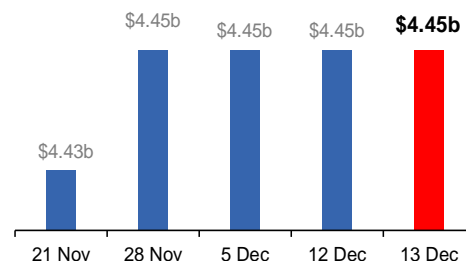
Lockdown (#6) since 6 Aug to 28 Oct
Claiming period ends 9 Dec

**745,000 people have received at least
one COVID Disaster Payment.**

\$4.45b paid out as at 13 Dec 2021.

**\$770,000 paid in initial and reoccurring
payments in the week ending
12 Dec 2021.**

Cumulative payments made by State since
activation on 8 Jun 2021.



Northern Territory

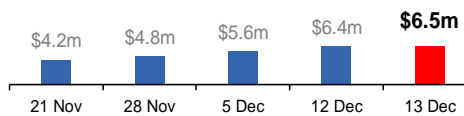
Lockdown (#3) from 16 Nov to 22 Nov
Claiming period ends 27 Dec

**7,200 people have received at least one
COVID Disaster Payment.**

\$6.5m paid out as at 13 Dec 2021.

**\$816,000 paid in initial payments in the
week ending 12 Dec 2021.**

Cumulative payments made by State since
activation on 25 Aug 2021.



New South Wales

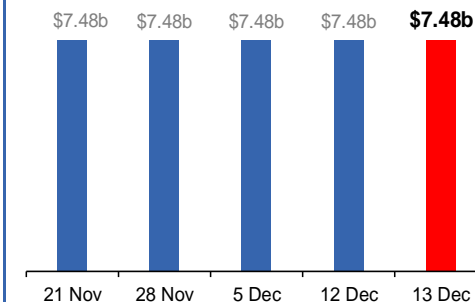
Lockdown from 24 Jun to 10 Oct
Claiming period ended 27 Nov

**1.08m people have received at least
one COVID Disaster Payment.**

\$7.48b paid out as at 13 Dec 2021.

**\$128,000 paid in initial and reoccurring
payments in the week ending
12 Dec 2021.**

Cumulative payments made by State since
activation on 1 Jul 2021.



Australian Capital Territory

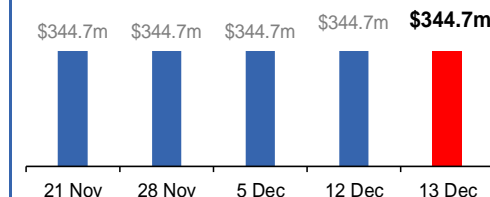
Lockdown since 12 Aug to 14 Oct
Claiming period ended 25 Nov

**65,000 people have received at least
one COVID Disaster Payment.**

\$344.7m paid out as at 13 Dec 2021.

**\$6,000 paid in initial and reoccurring
payments in the week ending
12 Dec 2021.**

Cumulative payments made by State since
activation on 20 Aug 2021.



Data as at midnight:
13 Dec 2021

Pandemic Response Payments (continued)

COVID-19 DISASTER PAYMENTS


Tasmania

Lockdown from 15 Oct to 18 Oct
Claiming period ended 12 Nov

6,900 people have received at least one COVID Disaster Payment.

\$3.6m paid out as at 13 Dec 2021.

Nil paid in initial payments in the week ending 12 Dec 2021.

 Cumulative payments made by State since activation on 22 Oct 2021.




Queensland

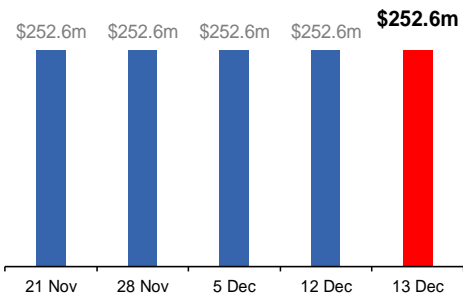
Lockdown from 31 Jul to 11 Aug
Claiming period ended 28 Aug

196,000 people have received at least one COVID Disaster Payment.

\$252.6m paid out as at 13 Dec 2021.

\$5,000 paid in initial and reoccurring payments in the week ending 12 Dec 2021.

 Cumulative payments made by State since activation on 7 Aug 2021.




South Australia

Lockdown from 21 to 27 Jul
Claiming period ended 17 Aug

86,000 people have received at least one COVID Disaster Payment.

\$48.2m paid out as at 13 Dec 2021.

\$1,200 paid in initial and reoccurring payments in the week ending 12 Dec 2021.

 Cumulative payments made by State since activation on 28 Jul 2021.

