



CURRENT STATUS OF CONFIRMED CASES



79



ACT	NSW	NT	QLD	SA	TAS	VIC	WA
2	25	0	0	0	0	52	0

539



ACT	NSW	NT	QLD	SA	TAS	VIC	WA
5	151	39	27	2	0	315	0

49,462,643

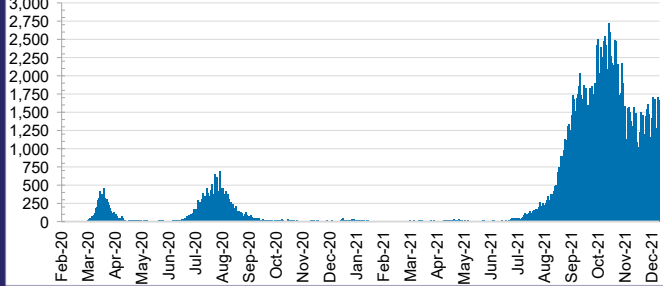


0.5% POSITIVE

**TOTAL TESTS
CONDUCTED**

ACT	NSW	NT	QLD
654,163	22,472,084	534,807	5,010,839
POSITIVE	POSITIVE	POSITIVE	POSITIVE
0.3%	0.4%	0.1%	0.0%
SA	TAS	VIC	WA
2,668,652	411,985	15,725,769	1,984,344
POSITIVE	POSITIVE	POSITIVE	POSITIVE
0.0%	0.1%	0.8%	0.1%

DAILY NUMBER OF REPORTED CASES

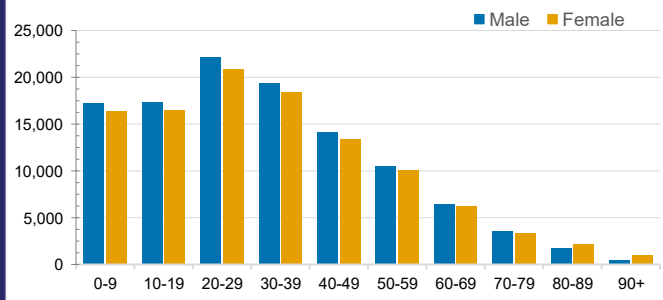


CASES IN AGED CARE SERVICES

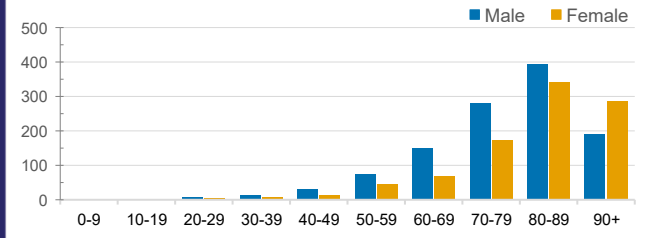
Confirmed Cases	Australia	ACT	NSW	NT	QLD	SA	TAS	VIC	WA
Residential Care Recipients	3542 [1842] (886)	19 [8] (7)	530 [122] (101)	0	1 (1)	0	1 (1)	2991 [1712] (776)	0
In Home Care Recipients	135 [76] (11)	0	36 [15] (3)	0	8 [8]	1 [1]	5 [3] (2)	85 [49] (5)	1 (1)

Cases in care recipients [recovered] (deaths)

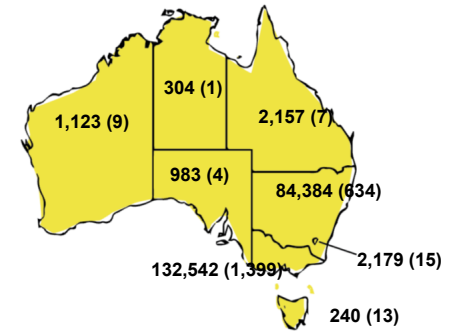
CASES BY AGE GROUP AND SEX



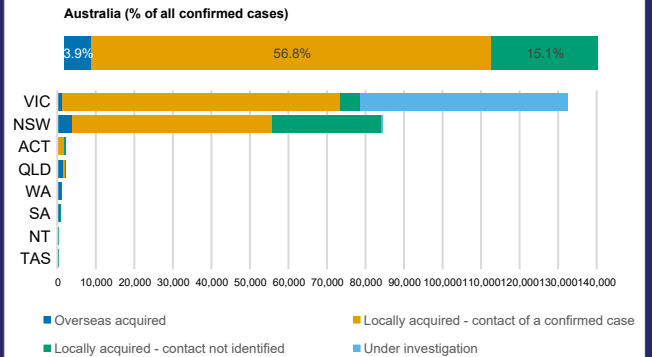
DEATHS BY AGE GROUP AND SEX



CASES (DEATHS) BY STATE AND TERRITORIES



CASES BY SOURCE OF INFECTION



PUBLIC HEALTH RESPONSE MEASURE

