



CURRENT STATUS OF CONFIRMED CASES



79



ACT	NSW	NT	QLD	SA	TAS	VIC	WA
2	25	1	0	0	0	51	0

529



ACT	NSW	NT	QLD	SA	TAS	VIC	WA
4	151	35	34	2	0	303	0

49,270,259

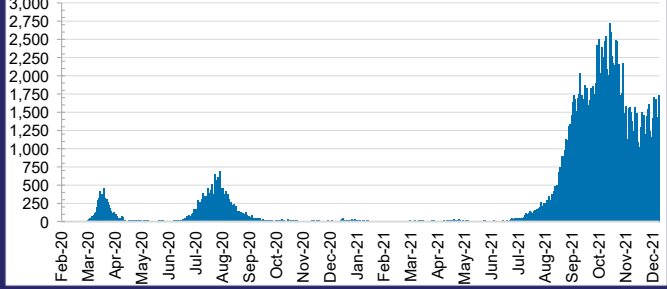


0.5% POSITIVE

**TOTAL TESTS
CONDUCTED**

ACT	NSW	NT	QLD
651,102	22,387,201	532,586	4,996,142
POSITIVE	POSITIVE	POSITIVE	POSITIVE
0.3%	0.4%	0.1%	0.0%
SA	TAS	VIC	WA
2,655,774	411,164	15,654,591	1,981,699
POSITIVE	POSITIVE	POSITIVE	POSITIVE
0.0%	0.1%	0.8%	0.1%

DAILY NUMBER OF REPORTED CASES

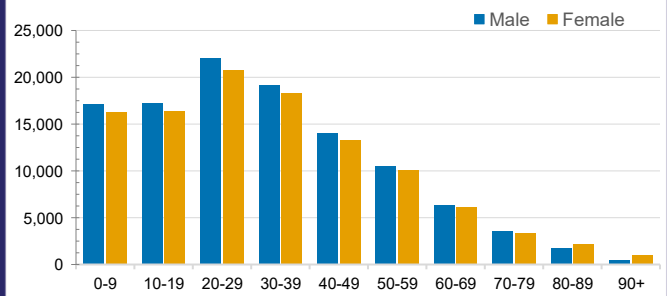


CASES IN AGED CARE SERVICES

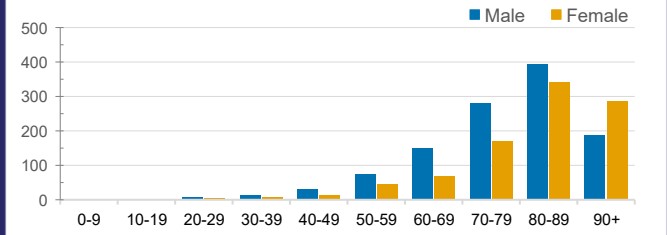
Confirmed Cases	Australia	ACT	NSW	NT	QLD	SA	TAS	VIC	WA
Residential Care Recipients	3534 [1840] (885)	19 [8] (7)	528 [122] (101)	0	1 (1)	0	1 (1)	2985 [1710] (775)	0
In Home Care Recipients	135 [76] (11)	0	35 [15] (3)	0	8 [8]	1 [1]	5 [3] (2)	85 [49] (5)	1 (1)

Cases in care recipients [recovered] (deaths)

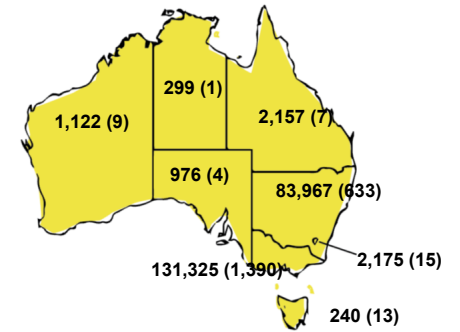
CASES BY AGE GROUP AND SEX



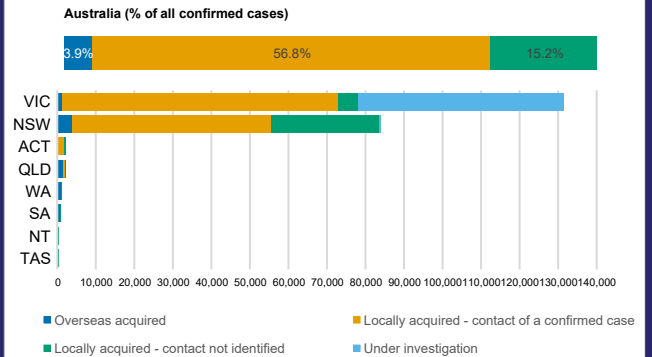
DEATHS BY AGE GROUP AND SEX



CASES (DEATHS) BY STATE AND TERRITORIES



CASES BY SOURCE OF INFECTION



PUBLIC HEALTH RESPONSE MEASURE

