



CURRENT STATUS OF CONFIRMED CASES



122



ACT	NSW	NT	QLD	SA	TAS	VIC	WA
0	63	0	0	4	0	55	0

1,481



ACT	NSW	NT	QLD	SA	TAS	VIC	WA
4	747	195	103	37	0	395	0

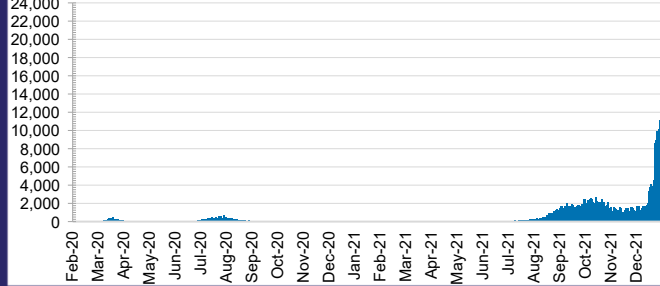
54,703,523



0.7% POSITIVE

ACT	NSW	NT	QLD
739,670	25,021,284	591,670	5,468,623
POSITIVE	POSITIVE	POSITIVE	POSITIVE
0.5%	0.7%	0.1%	0.2%
SA	TAS	VIC	WA
3,061,982	449,798	17,290,692	2,079,804
POSITIVE	POSITIVE	POSITIVE	POSITIVE
0.3%	0.1%	1.0%	0.1%

DAILY NUMBER OF REPORTED CASES

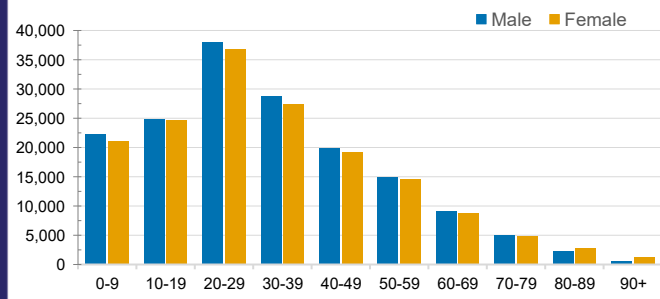


CASES IN AGED CARE SERVICES

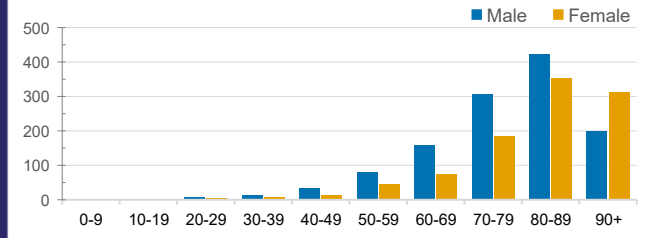
Confirmed Cases	Australia	ACT	NSW	NT	QLD	SA	TAS	VIC	WA
Residential Care Recipients	4000 [1959] (912)	19 [8] (7)	764 [123] (110)	0	13 (1)	0	1 (1)	3143 [1828] (792)	0
In Home Care Recipients	187 [76] (13)	0	44 [15] (3)	0	11 [8]	1 [1]	5 [3] (2)	125 [49] (7)	1 (1)

Cases in care recipients [recovered] (deaths)

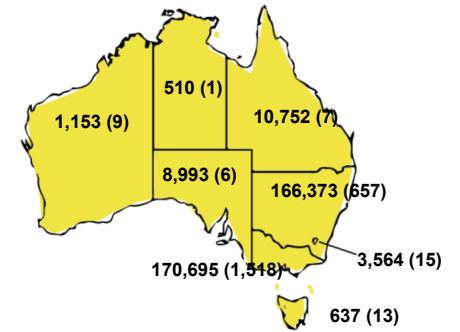
CASES BY AGE GROUP AND SEX



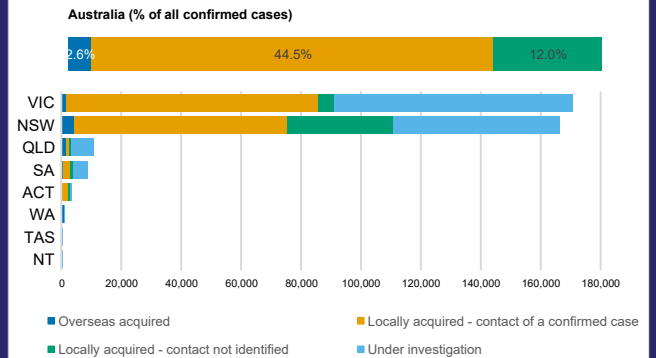
DEATHS BY AGE GROUP AND SEX



CASES (DEATHS) BY STATE AND TERRITORIES



CASES BY SOURCE OF INFECTION



PUBLIC HEALTH RESPONSE MEASURE

