



CURRENT STATUS OF CONFIRMED CASES



71

CURRENT CASES
INTENSIVE CARE UNITS (ICU)

ACT	NSW	NT	QLD	SA	TAS	VIC	WA
3	25	0	0	0	0	43	0

511

CURRENT CASES
ADMITTED TO HOSPITALS

ACT	NSW	NT	QLD	SA	TAS	VIC	WA
4	140	61	16	1	0	289	0

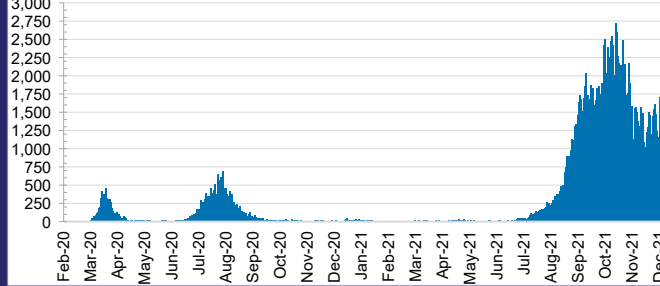
48,445,060

0.4% POSITIVE

TOTAL TESTS
CONDUCTED

ACT	NSW	NT	QLD
644,564	22,039,691	520,037	4,945,853
POSITIVE	POSITIVE	POSITIVE	POSITIVE
0.3%	0.4%	0.1%	0.0%
SA	TAS	VIC	WA
2,588,826	407,604	15,333,513	1,964,972
POSITIVE	POSITIVE	POSITIVE	POSITIVE
0.0%	0.1%	0.8%	0.1%

DAILY NUMBER OF REPORTED CASES

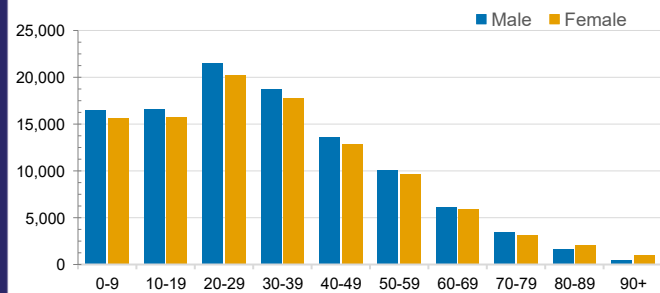


CASES IN AGED CARE SERVICES

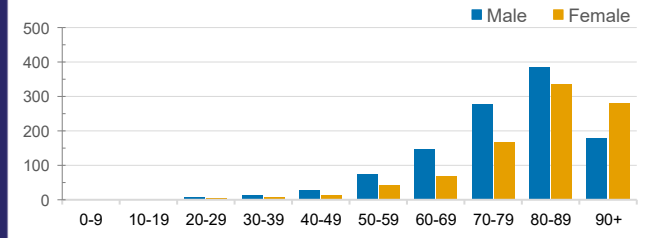
Confirmed Cases	Australia	ACT	NSW	NT	QLD	SA	TAS	VIC	WA
Residential Care Recipients	3451 [1813] (877)	19 [8] (7)	498 [122] (99)	0	1 (1)	0	1 (1)	2932 [1683] (769)	0
In Home Care Recipients	124 [76] (11)	0	34 [15] (3)	0	8 [8]	1 [1]	5 [3] (2)	75 [49] (5)	1 (1)

Cases in care recipients [recovered] (deaths)

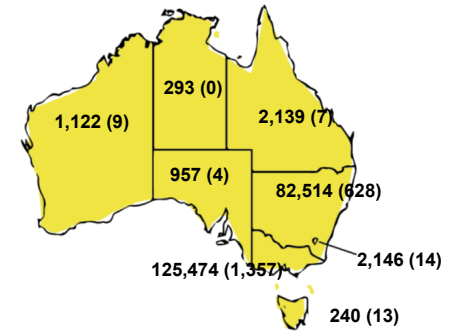
CASES BY AGE GROUP AND SEX



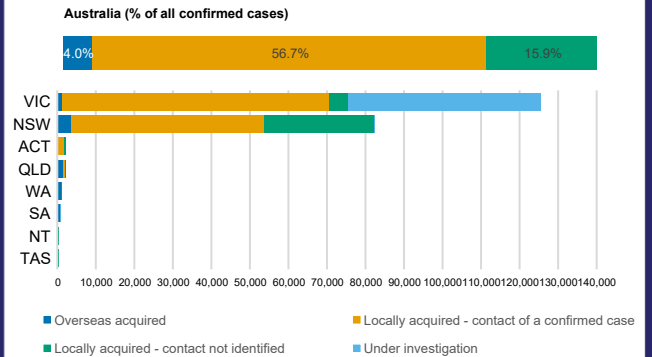
DEATHS BY AGE GROUP AND SEX



CASES (DEATHS) BY STATE AND TERRITORIES



CASES BY SOURCE OF INFECTION



PUBLIC HEALTH RESPONSE MEASURE

