



**CURRENT STATUS OF CONFIRMED CASES**



**126**



ACT	NSW	NT	QLD	SA	TAS	VIC	WA
0	61	0	0	3	0	62	0

**1,314**



ACT	NSW	NT	QLD	SA	TAS	VIC	WA
4	625	158	93	37	0	397	0

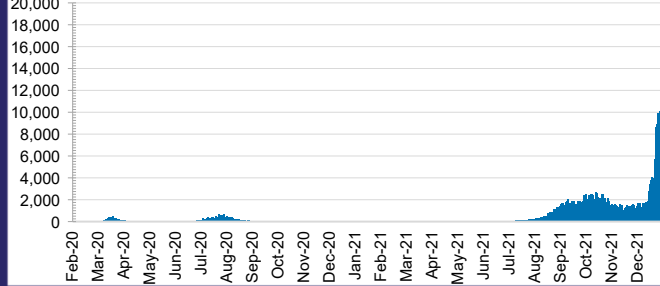
**54,434,530**



**0.6% POSITIVE**

ACT	NSW	NT	QLD
734,132	24,924,083	580,515	5,433,431
POSITIVE	POSITIVE	POSITIVE	POSITIVE
0.5%	0.6%	0.1%	0.2%
SA	TAS	VIC	WA
3,038,562	446,580	17,209,599	2,067,628
POSITIVE	POSITIVE	POSITIVE	POSITIVE
0.3%	0.1%	1.0%	0.1%

**DAILY NUMBER OF REPORTED CASES**

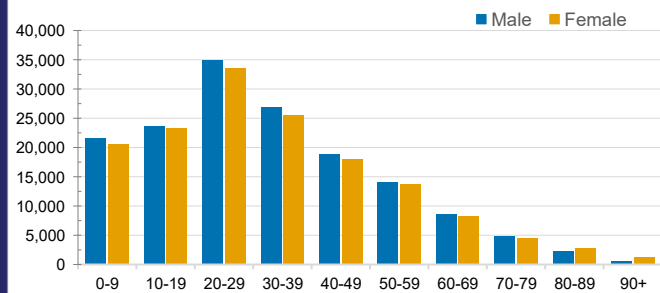


**CASES IN AGED CARE SERVICES**

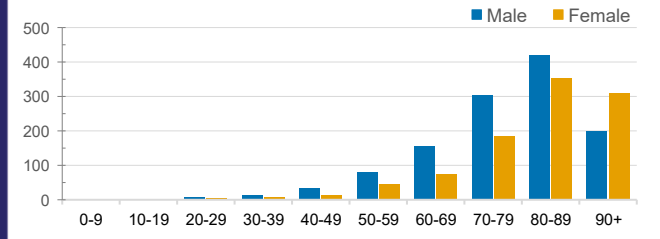
Confirmed Cases	Australia	ACT	NSW	NT	QLD	SA	TAS	VIC	WA
Residential Care Recipients	3963 [1950] (909)	19 [8] (7)	735 [122] (107)	0	10 (1)	0	1 (1)	3141 [1820] (792)	0
In Home Care Recipients	187 [76] (13)	0	44 [15] (3)	0	11 [8]	1 [1]	5 [3] (2)	125 [49] (7)	1 (1)

Cases in care recipients [recovered] (deaths)

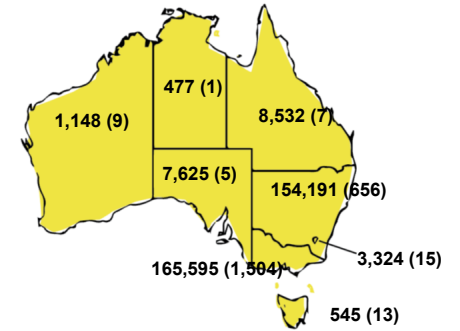
**CASES BY AGE GROUP AND SEX**



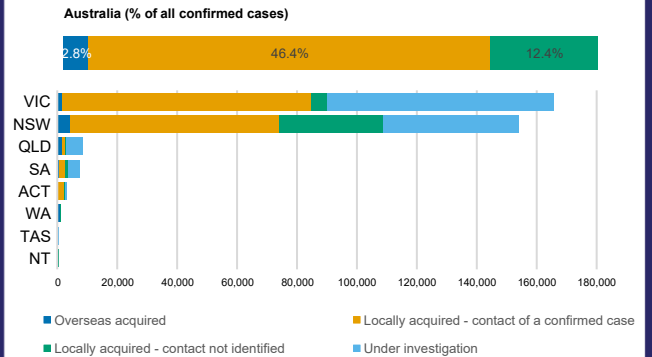
**DEATHS BY AGE GROUP AND SEX**



**CASES (DEATHS) BY STATE AND TERRITORIES**



**CASES BY SOURCE OF INFECTION**



**PUBLIC HEALTH RESPONSE MEASURE**

