



CURRENT STATUS OF CONFIRMED CASES



135



| ACT | NSW | NT | QLD | SA | TAS | VIC | WA |
|-----|-----|----|-----|----|-----|-----|----|
| 0 | 60 | 1 | 0 | 5 | 0 | 69 | 0 |

1,146



| ACT | NSW | NT | QLD | SA | TAS | VIC | WA |
|-----|-----|-----|-----|----|-----|-----|----|
| 3 | 557 | 100 | 89 | 36 | 0 | 361 | 0 |

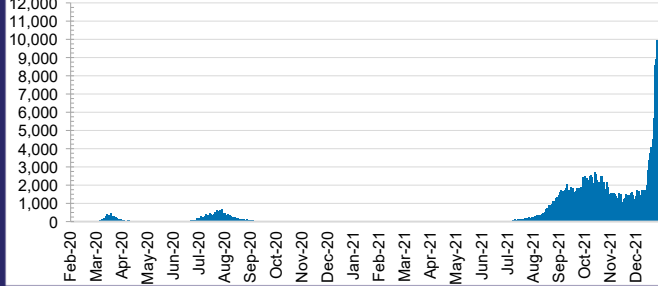
54,112,957



0.6% POSITIVE

| ACT | NSW | NT | QLD |
|-----------|------------|------------|-----------|
| 731,228 | 24,766,325 | 578,833 | 5,398,606 |
| POSITIVE | POSITIVE | POSITIVE | POSITIVE |
| 0.4% | 0.6% | 0.1% | 0.1% |
| SA | TAS | VIC | WA |
| 3,015,820 | 444,078 | 17,134,467 | 2,043,600 |
| POSITIVE | POSITIVE | POSITIVE | POSITIVE |
| 0.2% | 0.1% | 0.9% | 0.1% |

DAILY NUMBER OF REPORTED CASES

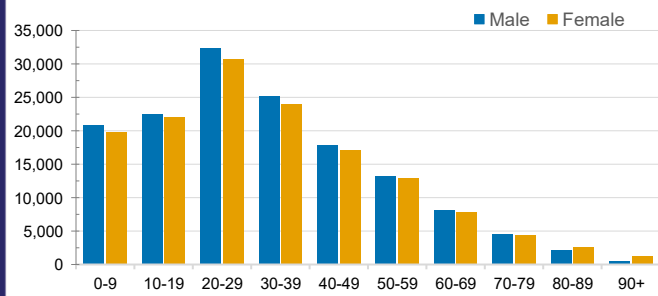


CASES IN AGED CARE SERVICES

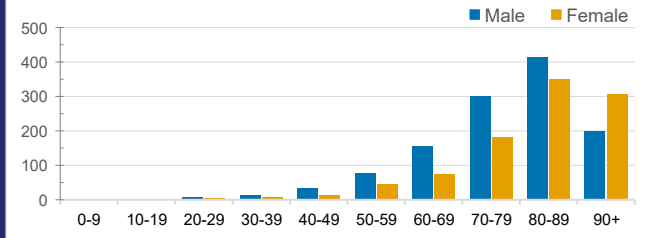
| Confirmed Cases | Australia | ACT | NSW | NT | QLD | SA | TAS | VIC | WA |
|-----------------------------|-------------------|------------|-----------------|----|--------|-------|-----------|-------------------|-------|
| Residential Care Recipients | 3896 [1950] (909) | 19 [8] (7) | 701 [122] (107) | 0 | 5 (1) | 0 | 1 (1) | 3130 [1820] (792) | 0 |
| In Home Care Recipients | 187 [76] (13) | 0 | 44 [15] (3) | 0 | 11 [8] | 1 [1] | 5 [3] (2) | 125 [49] (7) | 1 (1) |

Cases in care recipients [recovered] (deaths)

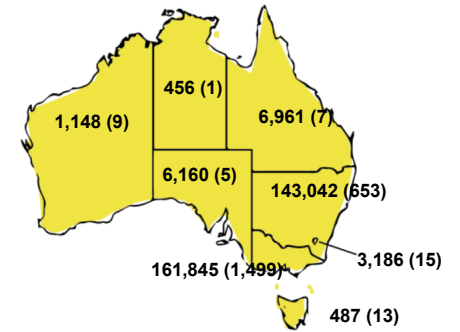
CASES BY AGE GROUP AND SEX



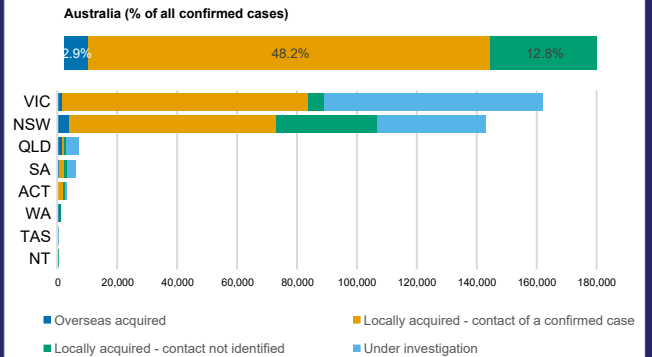
DEATHS BY AGE GROUP AND SEX



CASES (DEATHS) BY STATE AND TERRITORIES



CASES BY SOURCE OF INFECTION



PUBLIC HEALTH RESPONSE MEASURE

