



CURRENT STATUS OF CONFIRMED CASES



140



ACT	NSW	NT	QLD	SA	TAS	VIC	WA
0	55	1	0	4	0	80	0

1,100



ACT	NSW	NT	QLD	SA	TAS	VIC	WA
1	521	115	72	23	0	368	0

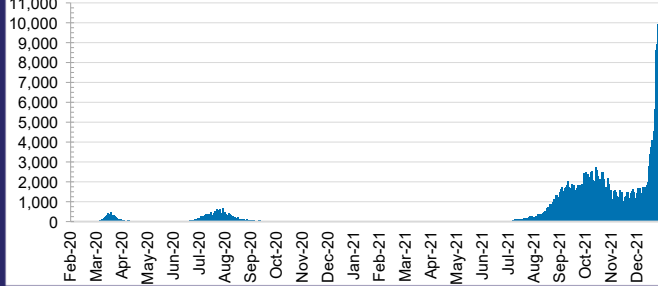
53,892,781



0.6% POSITIVE

ACT	NSW	NT	QLD
727,827	24,672,744	576,997	5,366,599
POSITIVE	POSITIVE	POSITIVE	POSITIVE
0.4%	0.6%	0.1%	0.1%
SA	TAS	VIC	WA
2,995,767	441,463	17,067,784	2,043,600
POSITIVE	POSITIVE	POSITIVE	POSITIVE
0.2%	0.1%	0.9%	0.1%

DAILY NUMBER OF REPORTED CASES

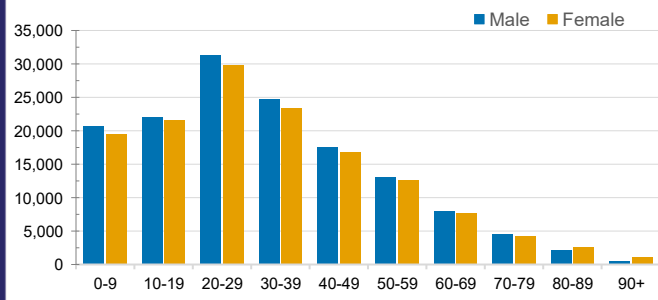


CASES IN AGED CARE SERVICES

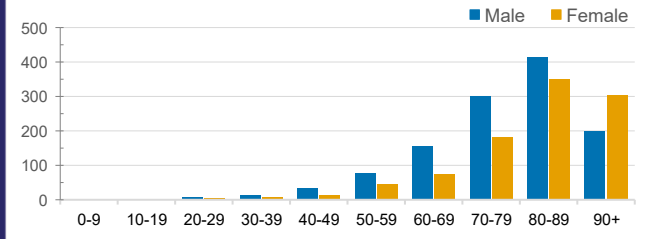
Confirmed Cases	Australia	ACT	NSW	NT	QLD	SA	TAS	VIC	WA
Residential Care Recipients	3857 [1950] (909)	19 [8] (7)	671 [122] (107)	0	3 (1)	0	1 (1)	3127 [1820] (792)	0
In Home Care Recipients	187 [76] (13)	0	44 [15] (3)	0	11 [8]	1 [1]	5 [3] (2)	125 [49] (7)	1 (1)

Cases in care recipients [recovered] (deaths)

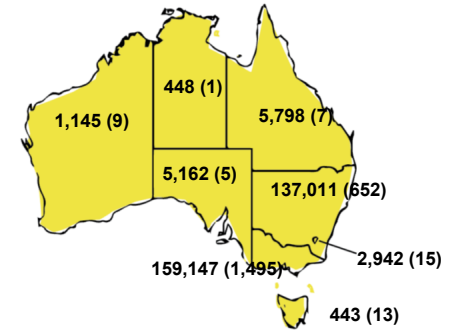
CASES BY AGE GROUP AND SEX



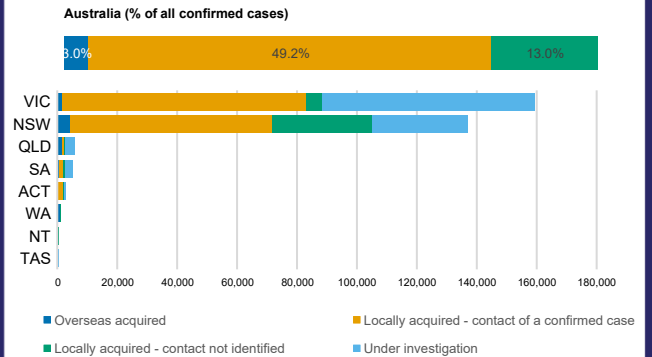
DEATHS BY AGE GROUP AND SEX



CASES (DEATHS) BY STATE AND TERRITORIES



CASES BY SOURCE OF INFECTION



PUBLIC HEALTH RESPONSE MEASURE

