



**CURRENT STATUS OF CONFIRMED CASES**



**131**



| ACT | NSW | NT | QLD | SA | TAS | VIC | WA |
|-----|-----|----|-----|----|-----|-----|----|
| 0   | 53  | 1  | 1   | 1  | 0   | 75  | 0  |

**994**



| ACT | NSW | NT | QLD | SA | TAS | VIC | WA |
|-----|-----|----|-----|----|-----|-----|----|
| 2   | 382 | 94 | 111 | 8  | 0   | 397 | 0  |

**53,154,261**

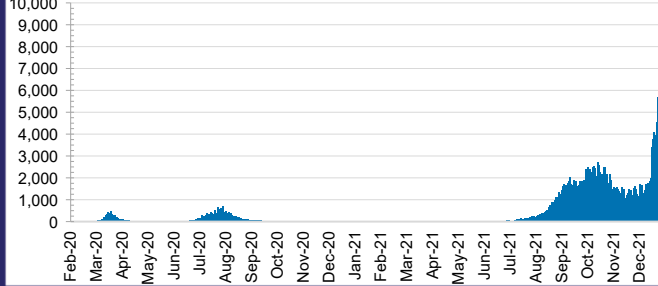


**0.5% POSITIVE**

**TOTAL TESTS  
CONDUCTED**

| ACT       | NSW        | NT         | QLD       |
|-----------|------------|------------|-----------|
| 715,777   | 24,316,697 | 575,056    | 5,278,248 |
| POSITIVE  | POSITIVE   | POSITIVE   | POSITIVE  |
| 0.4%      | 0.5%       | 0.1%       | 0.1%      |
| SA        | TAS        | VIC        | WA        |
| 2,935,413 | 435,479    | 16,853,991 | 2,043,600 |
| POSITIVE  | POSITIVE   | POSITIVE   | POSITIVE  |
| 0.1%      | 0.1%       | 0.9%       | 0.1%      |

**DAILY NUMBER OF REPORTED CASES**

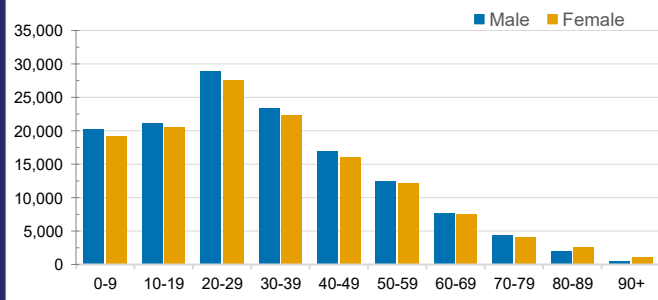


**CASES IN AGED CARE SERVICES**

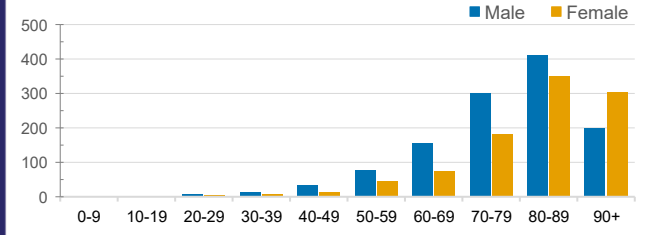
| Confirmed Cases             | Australia         | ACT        | NSW             | NT | QLD    | SA    | TAS       | VIC               | WA    |
|-----------------------------|-------------------|------------|-----------------|----|--------|-------|-----------|-------------------|-------|
| Residential Care Recipients | 3784 [1948] (905) | 19 [8] (7) | 632 [122] (106) | 0  | 1 (1)  | 0     | 1 (1)     | 3113 [1818] (790) | 0     |
| In Home Care Recipients     | 187 [76] (13)     | 0          | 44 [15] (3)     | 0  | 11 [8] | 1 [1] | 5 [3] (2) | 125 [49] (7)      | 1 (1) |

Cases in care recipients [recovered] (deaths)

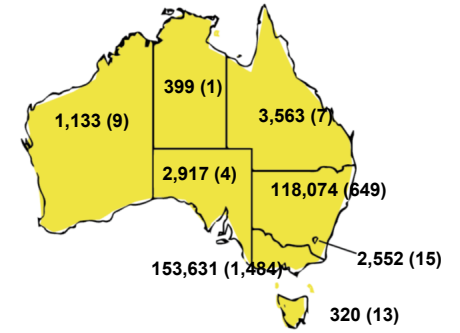
**CASES BY AGE GROUP AND SEX**



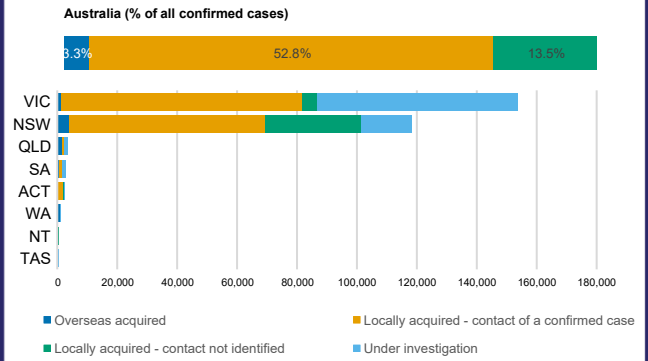
**DEATHS BY AGE GROUP AND SEX**



**CASES (DEATHS) BY STATE AND TERRITORIES**



**CASES BY SOURCE OF INFECTION**



**PUBLIC HEALTH RESPONSE MEASURE**

