



CURRENT STATUS OF CONFIRMED CASES



112



ACT	NSW	NT	QLD	SA	TAS	VIC	WA
0	40	1	1	0	0	70	0

878



ACT	NSW	NT	QLD	SA	TAS	VIC	WA
3	302	94	80	5	0	394	0

52,513,226

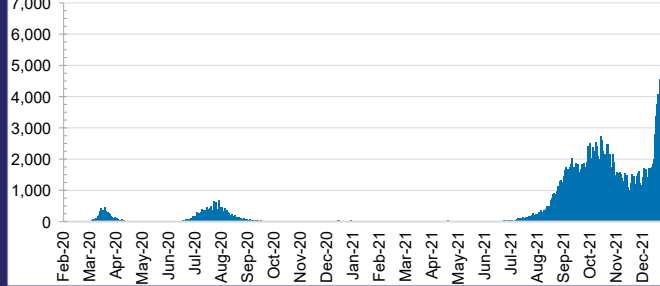


0.5% POSITIVE

**TOTAL TESTS
CONDUCTED**

ACT	NSW	NT	QLD
702,646	23,992,082	569,621	5,213,831
POSITIVE	POSITIVE	POSITIVE	POSITIVE
0.3%	0.4%	0.1%	0.1%
SA	TAS	VIC	WA
2,886,789	428,984	16,687,314	2,031,959
POSITIVE	POSITIVE	POSITIVE	POSITIVE
0.1%	0.1%	0.9%	0.1%

DAILY NUMBER OF REPORTED CASES

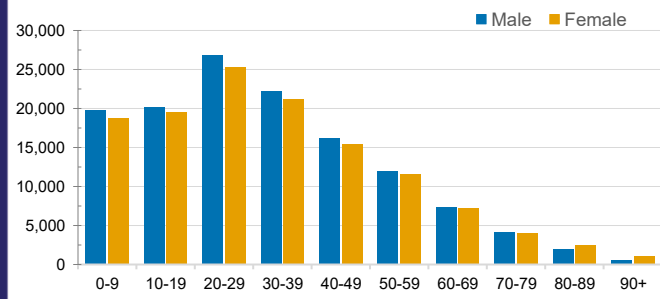


CASES IN AGED CARE SERVICES

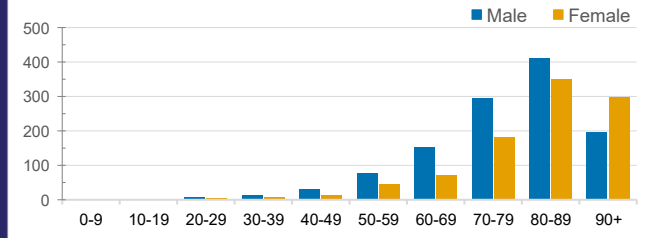
Confirmed Cases	Australia	ACT	NSW	NT	QLD	SA	TAS	VIC	WA
Residential Care Recipients	3734 [1933] (902)	19 [8] (7)	612 [122] (106)	0	1 (1)	0	1 (1)	3095 [1803] (787)	0
In Home Care Recipients	187 [76] (13)	0	44 [15] (3)	0	11 [8]	1 [1]	5 [3] (2)	125 [49] (7)	1 (1)

Cases in care recipients [recovered] (deaths)

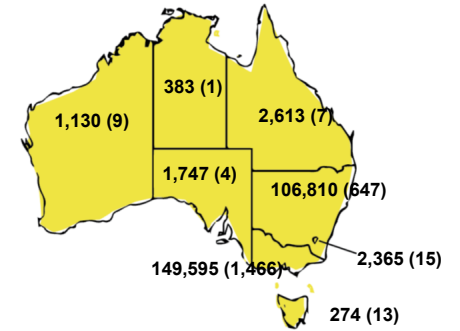
CASES BY AGE GROUP AND SEX



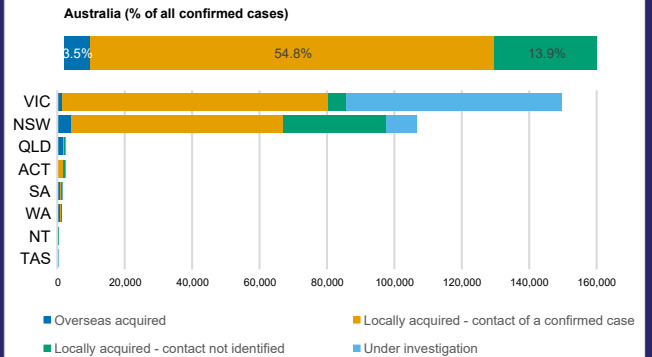
DEATHS BY AGE GROUP AND SEX



CASES (DEATHS) BY STATE AND TERRITORIES



CASES BY SOURCE OF INFECTION



PUBLIC HEALTH RESPONSE MEASURE

