



CURRENT STATUS OF CONFIRMED CASES



113



ACT	NSW	NT	QLD	SA	TAS	VIC	WA
0	39	0	1	0	0	73	0

850



ACT	NSW	NT	QLD	SA	TAS	VIC	WA
3	284	89	75	7	0	392	0

52,202,944

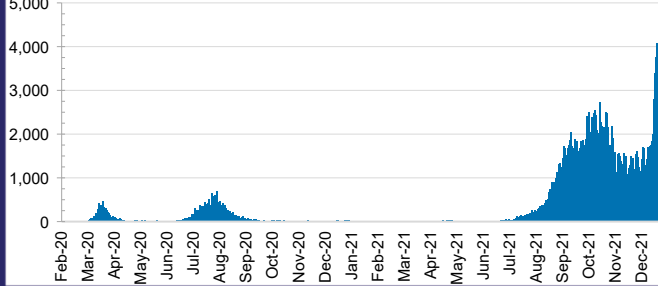


**TOTAL TESTS
CONDUCTED**

0.5% POSITIVE

ACT	NSW	NT	QLD
700,604	23,840,639	564,878	5,183,948
POSITIVE	POSITIVE	POSITIVE	POSITIVE
0.3%	0.4%	0.1%	0.0%
SA	TAS	VIC	WA
2,864,767	424,965	16,595,052	2,028,091
POSITIVE	POSITIVE	POSITIVE	POSITIVE
0.1%	0.1%	0.9%	0.1%

DAILY NUMBER OF REPORTED CASES

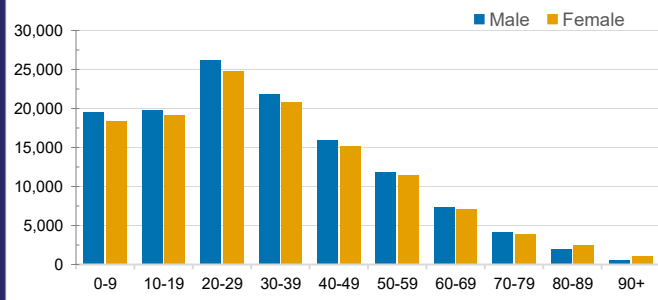


CASES IN AGED CARE SERVICES

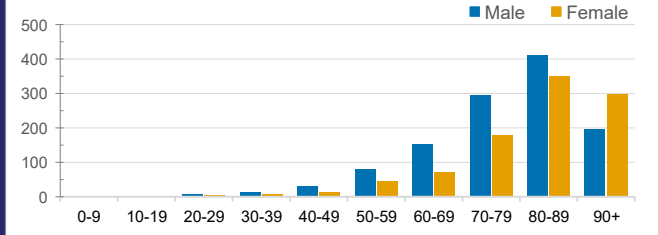
Confirmed Cases	Australia	ACT	NSW	NT	QLD	SA	TAS	VIC	WA
Residential Care Recipients	3710 [1919] (897)	19 [8] (7)	597 [122] (105)	0	1 (1)	0	1 (1)	3091 [1789] (783)	0
In Home Care Recipients	187 [76] (13)	0	44 [15] (3)	0	11 [8]	1 [1]	5 [3] (2)	125 [49] (7)	1 (1)

Cases in care recipients [recovered] (deaths)

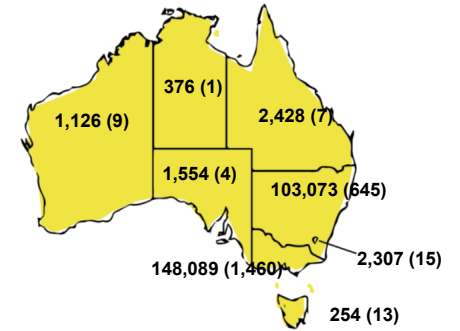
CASES BY AGE GROUP AND SEX



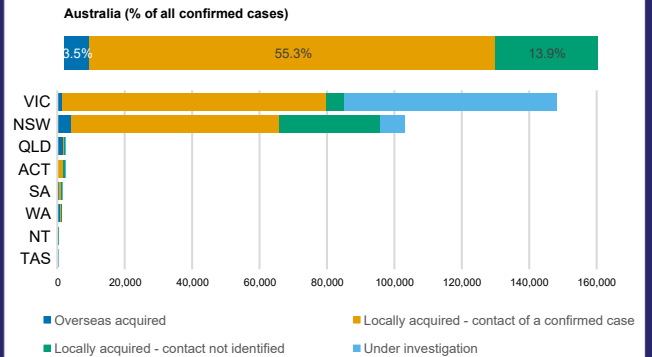
DEATHS BY AGE GROUP AND SEX



CASES (DEATHS) BY STATE AND TERRITORIES



CASES BY SOURCE OF INFECTION



PUBLIC HEALTH RESPONSE MEASURE

