



**CURRENT STATUS OF CONFIRMED CASES**



**114**



ACT	NSW	NT	QLD	SA	TAS	VIC	WA
0	33	0	0	0	0	81	0

**824**



ACT	NSW	NT	QLD	SA	TAS	VIC	WA
3	261	82	66	6	0	406	0

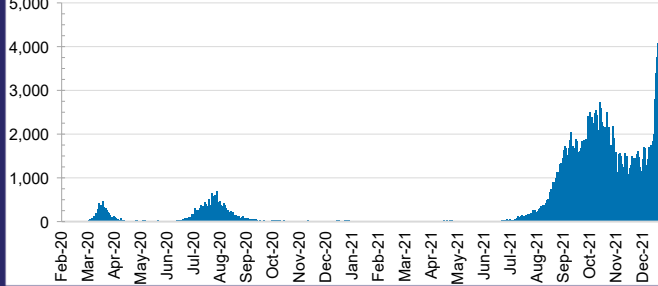
**51,931,242**



**0.5% POSITIVE**

ACT	NSW	NT	QLD
694,131	23,703,667	562,859	5,148,455
POSITIVE	POSITIVE	POSITIVE	POSITIVE
0.3%	0.4%	0.1%	0.0%
SA	TAS	VIC	WA
2,846,857	423,218	16,528,164	2,023,891
POSITIVE	POSITIVE	POSITIVE	POSITIVE
0.0%	0.1%	0.9%	0.1%

**DAILY NUMBER OF REPORTED CASES**

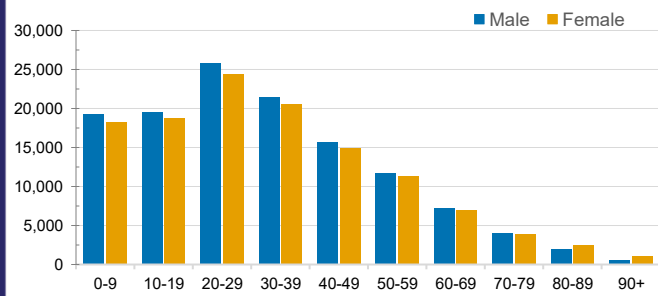


**CASES IN AGED CARE SERVICES**

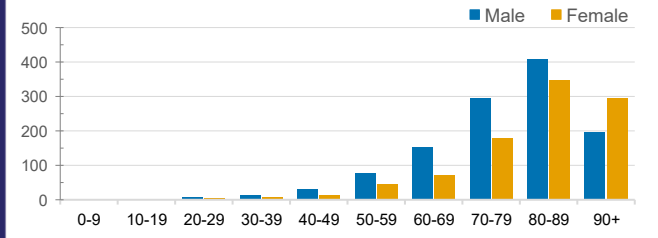
Confirmed Cases	Australia	ACT	NSW	NT	QLD	SA	TAS	VIC	WA
Residential Care Recipients	3678 [1916] (894)	19 [8] (7)	572 [122] (104)	0	1 (1)	0	1 (1)	3084 [1786] (781)	0
In Home Care Recipients	187 [76] (13)	0	44 [15] (3)	0	11 [8]	1 [1]	5 [3] (2)	125 [49] (7)	1 (1)

Cases in care recipients [recovered] (deaths)

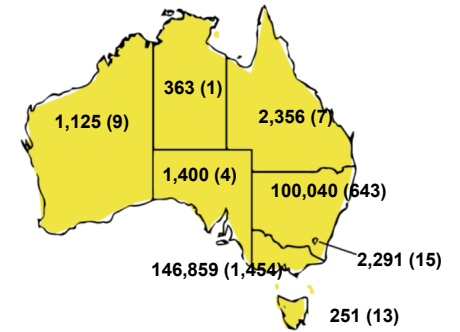
**CASES BY AGE GROUP AND SEX**



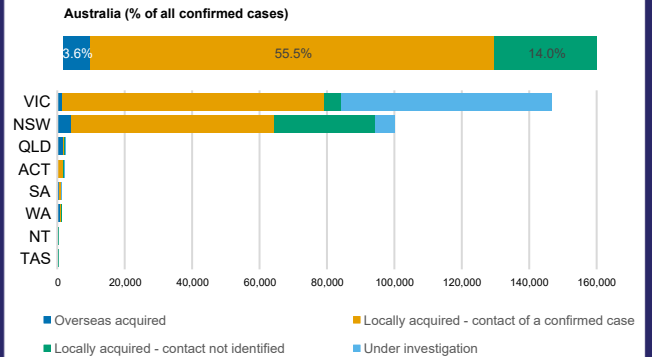
**DEATHS BY AGE GROUP AND SEX**



**CASES (DEATHS) BY STATE AND TERRITORIES**



**CASES BY SOURCE OF INFECTION**



**PUBLIC HEALTH RESPONSE MEASURE**

