



**CURRENT STATUS OF CONFIRMED CASES**



**114**



ACT	NSW	NT	QLD	SA	TAS	VIC	WA
1	26	0	0	0	0	87	0

**672**



ACT	NSW	NT	QLD	SA	TAS	VIC	WA
3	192	62	30	1	0	384	0

**50,870,786**

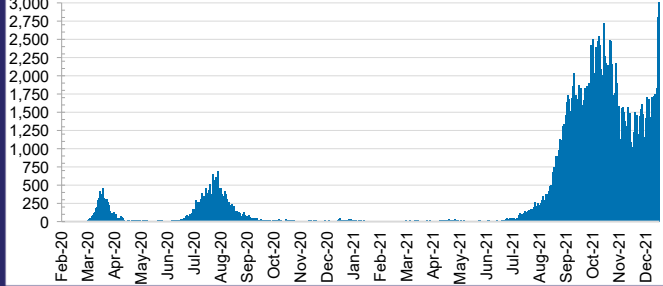


**0.5% POSITIVE**

**TOTAL TESTS  
CONDUCTED**

ACT	NSW	NT	QLD
676,757	23,145,630	549,790	5,087,013
POSITIVE	POSITIVE	POSITIVE	POSITIVE
0.3%	0.4%	0.1%	0.0%
SA	TAS	VIC	WA
2,773,136	417,251	16,210,256	2,010,953
POSITIVE	POSITIVE	POSITIVE	POSITIVE
0.0%	0.1%	0.9%	0.1%

**DAILY NUMBER OF REPORTED CASES**

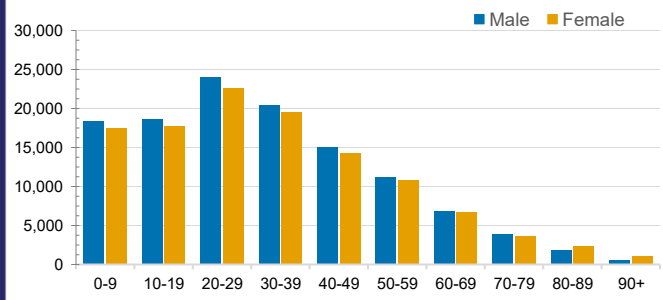


**CASES IN AGED CARE SERVICES**

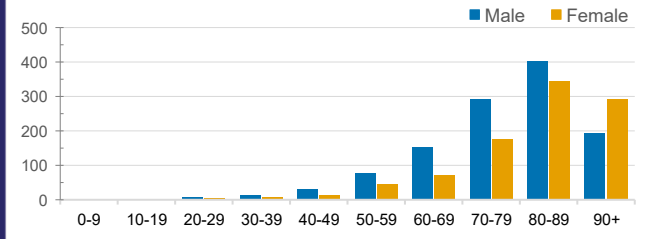
Confirmed Cases	Australia	ACT	NSW	NT	QLD	SA	TAS	VIC	WA
Residential Care Recipients	3618 [1913] (891)	19 [8] (7)	541 [122] (103)	0	1 (1)	0	1 (1)	3056 [1783] (779)	0
In Home Care Recipients	167 [76] (13)	0	39 [15] (3)	0	8 [8]	1 [1]	5 [3] (2)	113 [49] (7)	1 (1)

Cases in care recipients [recovered] (deaths)

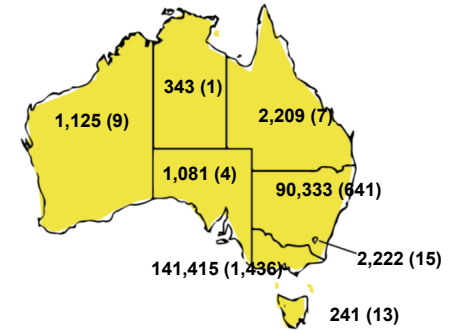
**CASES BY AGE GROUP AND SEX**



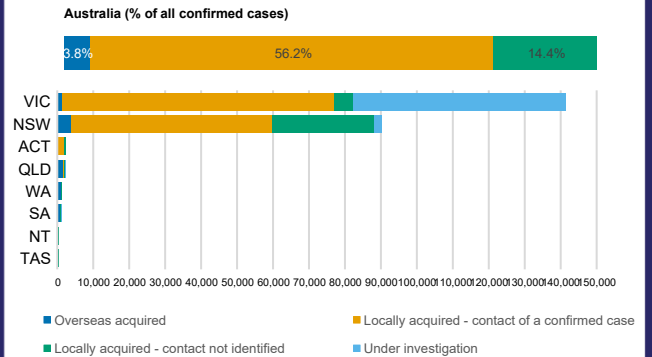
**DEATHS BY AGE GROUP AND SEX**



**CASES (DEATHS) BY STATE AND TERRITORIES**



**CASES BY SOURCE OF INFECTION**



**PUBLIC HEALTH RESPONSE MEASURE**

