



**CURRENT STATUS OF CONFIRMED CASES**



**109**



ACT	NSW	NT	QLD	SA	TAS	VIC	WA
1	24	0	0	0	0	84	0

**625**



ACT	NSW	NT	QLD	SA	TAS	VIC	WA
3	166	61	28	2	0	365	0

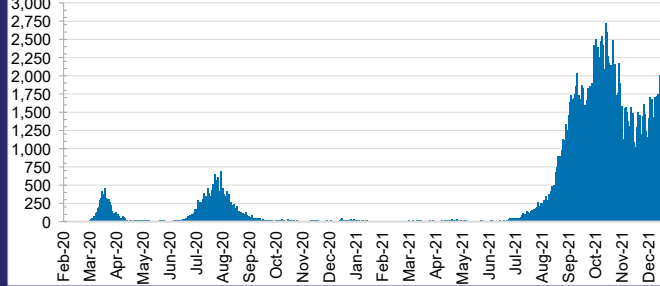
**50,602,279**



**0.5% POSITIVE**

ACT	NSW	NT	QLD
672,889	23,001,692	546,116	5,075,340
POSITIVE	POSITIVE	POSITIVE	POSITIVE
0.3%	0.4%	0.1%	0.0%
SA	TAS	VIC	WA
2,753,738	416,301	16,129,415	2,006,788
POSITIVE	POSITIVE	POSITIVE	POSITIVE
0.0%	0.1%	0.9%	0.1%

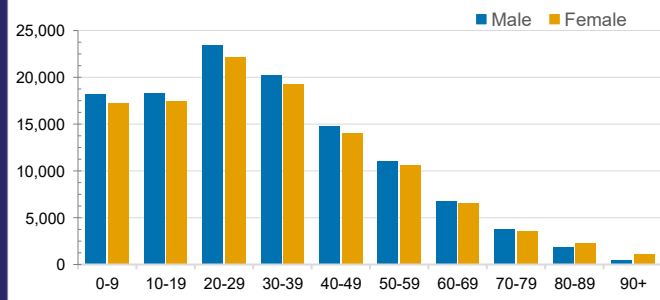
**DAILY NUMBER OF REPORTED CASES**



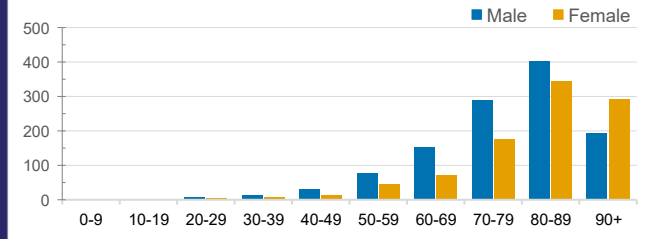
**CASES IN AGED CARE SERVICES**

Confirmed Cases	Australia	ACT	NSW	NT	QLD	SA	TAS	VIC	WA
Residential Care Recipients	3604 [1912] (891)	19 [8] (7)	535 [122] (103)	0	1 (1)	0	1 (1)	3048 [1782] (779)	0
In Home Care Recipients	150 [76] (12)	0	38 [15] (3)	0	8 [8]	1 [1]	5 [3] (2)	97 [49] (5)	1 (1)
Cases in care recipients [recovered] (deaths)									

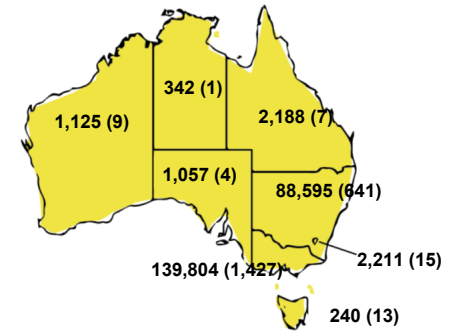
**CASES BY AGE GROUP AND SEX**



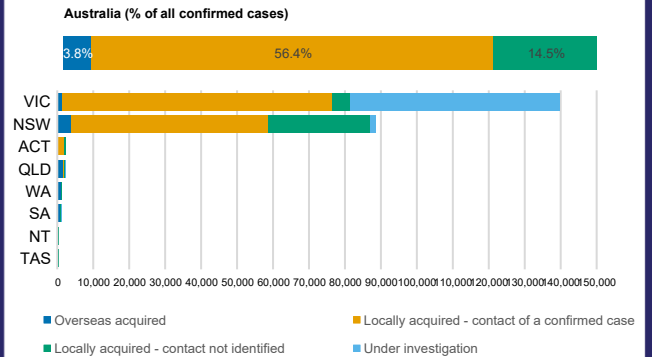
**DEATHS BY AGE GROUP AND SEX**



**CASES (DEATHS) BY STATE AND TERRITORIES**



**CASES BY SOURCE OF INFECTION**



**PUBLIC HEALTH RESPONSE MEASURE**

