



CURRENT STATUS OF CONFIRMED CASES



102



ACT	NSW	NT	QLD	SA	TAS	VIC	WA
1	21	0	0	0	0	80	0

610



ACT	NSW	NT	QLD	SA	TAS	VIC	WA
4	168	47	25	2	0	364	0

50,379,629

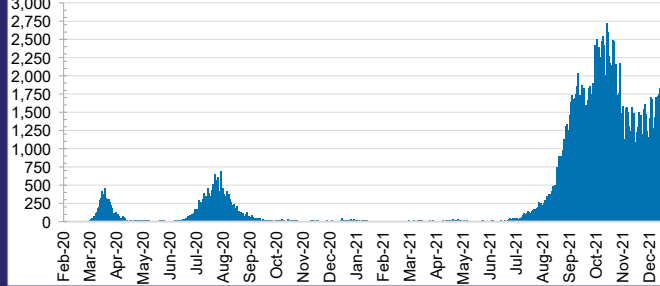


**TOTAL TESTS
CONDUCTED**

0.5% POSITIVE

ACT	NSW	NT	QLD
669,280	22,897,191	543,415	5,063,015
POSITIVE	POSITIVE	POSITIVE	POSITIVE
0.3%	0.4%	0.1%	0.0%
SA	TAS	VIC	WA
2,736,442	415,316	16,052,349	2,002,621
POSITIVE	POSITIVE	POSITIVE	POSITIVE
0.0%	0.1%	0.9%	0.1%

DAILY NUMBER OF REPORTED CASES

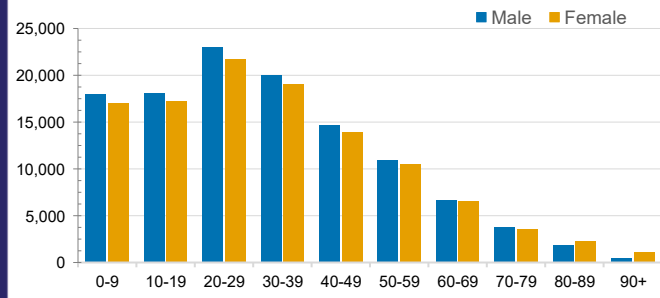


CASES IN AGED CARE SERVICES

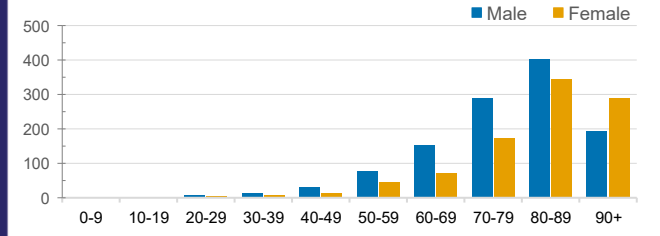
Confirmed Cases	Australia	ACT	NSW	NT	QLD	SA	TAS	VIC	WA
Residential Care Recipients	3597 [1871] (889)	19 [8] (7)	535 [122] (102)	0	1 (1)	0	1 (1)	3041 [1741] (778)	0
In Home Care Recipients	135 [76] (11)	0	35 [15] (3)	0	8 [8]	1 [1]	5 [3] (2)	85 [49] (5)	1 (1)

Cases in care recipients [recovered] (deaths)

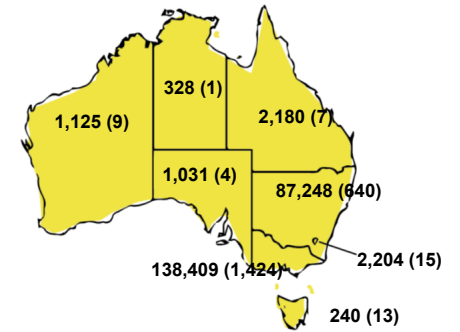
CASES BY AGE GROUP AND SEX



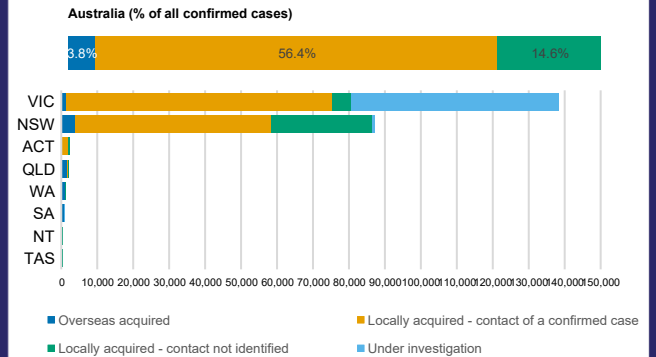
DEATHS BY AGE GROUP AND SEX



CASES (DEATHS) BY STATE AND TERRITORIES



CASES BY SOURCE OF INFECTION



PUBLIC HEALTH RESPONSE MEASURE

