



**CURRENT STATUS OF CONFIRMED CASES**

**230,753** **2,106** **16,543**

Total cases      Total deaths      Active cases

**103**

**CURRENT CASES  
INTENSIVE CARE UNITS (ICU)**

ACT	NSW	NT	QLD	SA	TAS	VIC	WA
2	24	0	0	0	0	77	0

**569**

**CURRENT CASES  
ADMITTED TO HOSPITALS**

ACT	NSW	NT	QLD	SA	TAS	VIC	WA
4	171	40	28	3	0	323	0

**50,201,106**

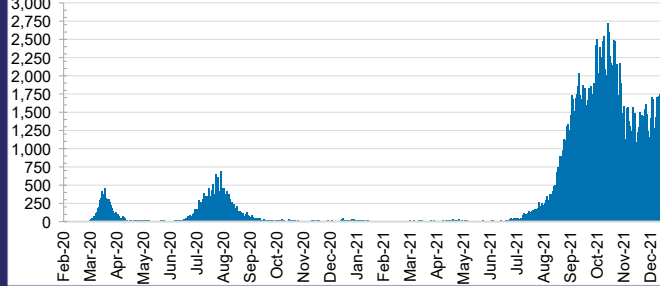


**0.5% POSITIVE**

**TOTAL TESTS  
CONDUCTED**

ACT	NSW	NT	QLD
665,141	22,810,629	540,632	5,052,348
POSITIVE	POSITIVE	POSITIVE	POSITIVE
0.3%	0.4%	0.1%	0.0%
SA	TAS	VIC	WA
2,721,609	414,270	15,997,882	1,998,595
POSITIVE	POSITIVE	POSITIVE	POSITIVE
0.0%	0.1%	0.9%	0.1%

**DAILY NUMBER OF REPORTED CASES**

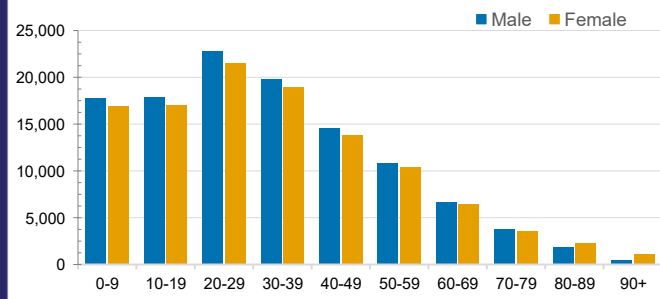


**CASES IN AGED CARE SERVICES**

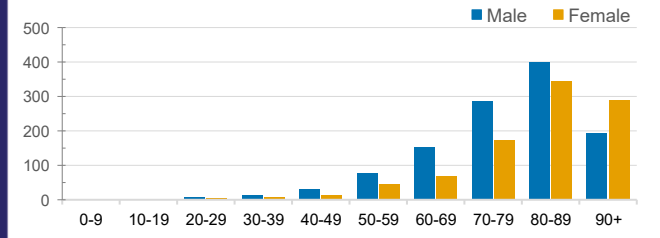
Confirmed Cases	Australia	ACT	NSW	NT	QLD	SA	TAS	VIC	WA
Residential Care Recipients	3584 [1868] (889)	19 [8] (7)	535 [122] (102)	0	1 (1)	0	1 (1)	3028 [1738] (778)	0
In Home Care Recipients	135 [76] (11)	0	35 [15] (3)	0	8 [8]	1 [1]	5 [3] (2)	85 [49] (5)	1 (1)

Cases in care recipients [recovered] (deaths)

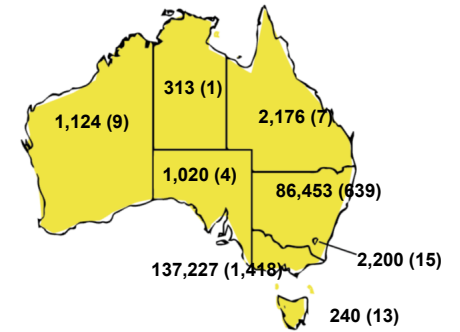
**CASES BY AGE GROUP AND SEX**



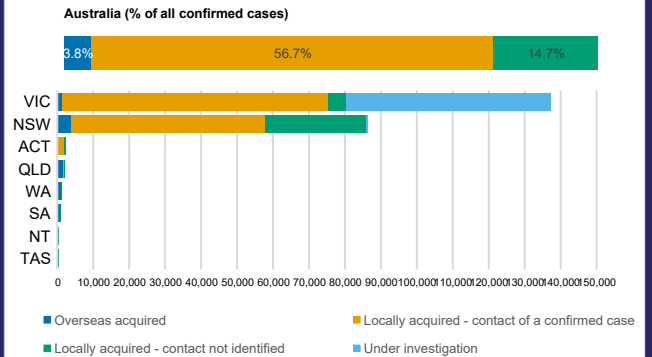
**DEATHS BY AGE GROUP AND SEX**



**CASES (DEATHS) BY STATE AND TERRITORIES**



**CASES BY SOURCE OF INFECTION**



**PUBLIC HEALTH RESPONSE MEASURE**

