



CURRENT STATUS OF CONFIRMED CASES

228,930 **2,104** **15,978**

Total cases Total deaths Active cases

99



ACT	NSW	NT	QLD	SA	TAS	VIC	WA
2	23	0	0	0	0	74	0

535



ACT	NSW	NT	QLD	SA	TAS	VIC	WA
4	156	34	28	3	0	310	0

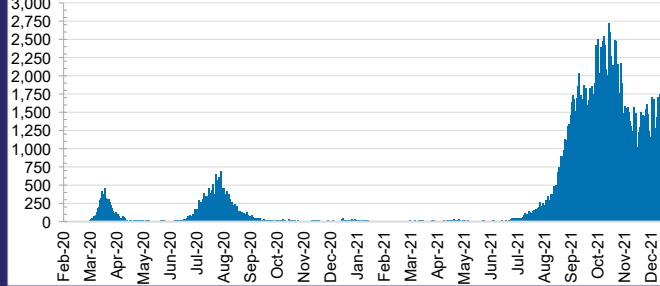
50,036,840



0.5% POSITIVE

ACT	NSW	NT	QLD
662,272	22,735,628	544,387	5,043,040
POSITIVE	POSITIVE	POSITIVE	POSITIVE
0.3%	0.4%	0.1%	0.0%
SA	TAS	VIC	WA
2,706,549	413,721	15,942,760	1,988,483
POSITIVE	POSITIVE	POSITIVE	POSITIVE
0.0%	0.1%	0.9%	0.1%

DAILY NUMBER OF REPORTED CASES

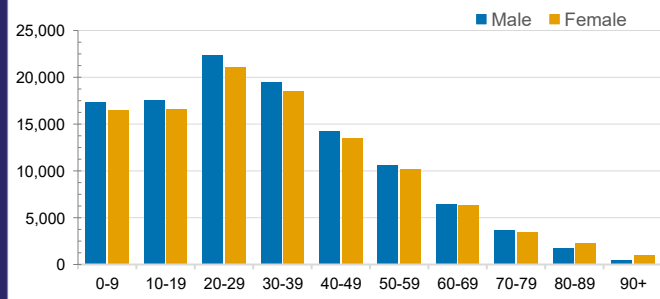


CASES IN AGED CARE SERVICES

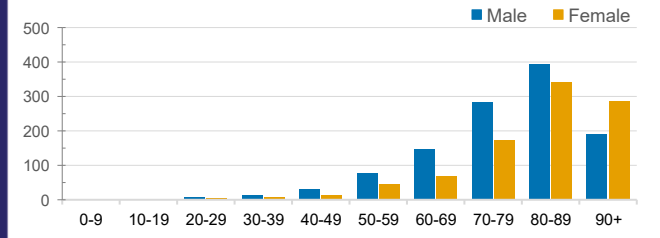
Confirmed Cases	Australia	ACT	NSW	NT	QLD	SA	TAS	VIC	WA
Residential Care Recipients	3560 [1847]	19 [8] (7)	530 [122] (101)	0	1 (1)	0	1 (1)	3009 [1717] (777)	0
In Home Care Recipients	135 [76] (11)	0	35 [15] (3)	0	8 [8]	1 [1]	5 [3] (2)	85 [49] (5)	1 (1)

Cases in care recipients [recovered] (deaths)

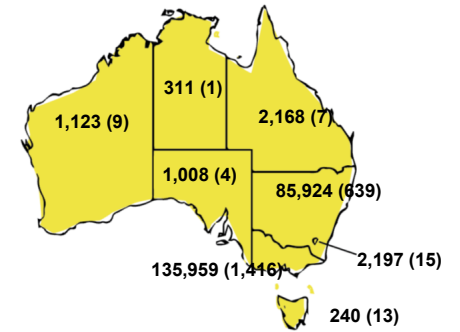
CASES BY AGE GROUP AND SEX



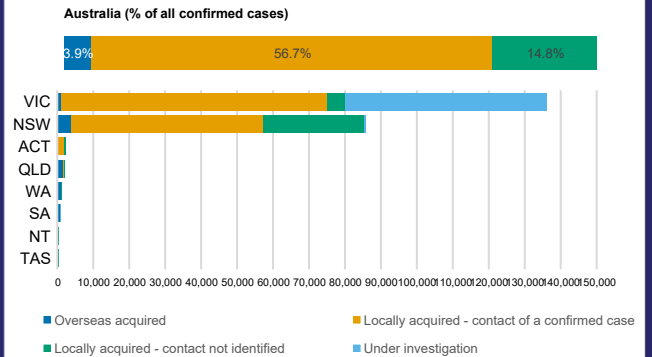
DEATHS BY AGE GROUP AND SEX



CASES (DEATHS) BY STATE AND TERRITORIES



CASES BY SOURCE OF INFECTION



PUBLIC HEALTH RESPONSE MEASURE

