



CURRENT STATUS OF CONFIRMED CASES

225,640 **2,084** **15,035**

Total cases Total deaths Active cases

87



ACT	NSW	NT	QLD	SA	TAS	VIC	WA
2	24	0	0	0	0	61	0

544



ACT	NSW	NT	QLD	SA	TAS	VIC	WA
5	158	41	25	2	0	313	0

49,651,950

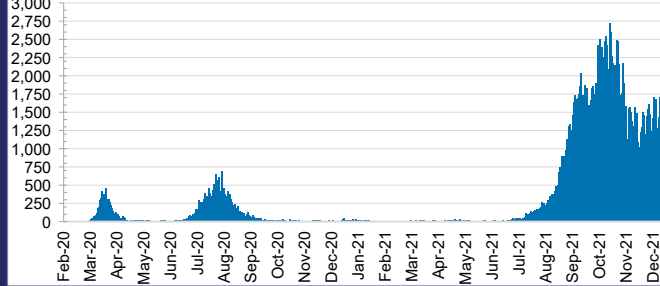


0.5% POSITIVE

**TOTAL TESTS
CONDUCTED**

ACT	NSW	NT	QLD
657,871	22,562,307	536,741	5,021,884
POSITIVE	POSITIVE	POSITIVE	POSITIVE
0.3%	0.4%	0.1%	0.0%
SA	TAS	VIC	WA
2,679,503	412,608	15,792,553	1,988,483
POSITIVE	POSITIVE	POSITIVE	POSITIVE
0.0%	0.1%	0.8%	0.1%

DAILY NUMBER OF REPORTED CASES

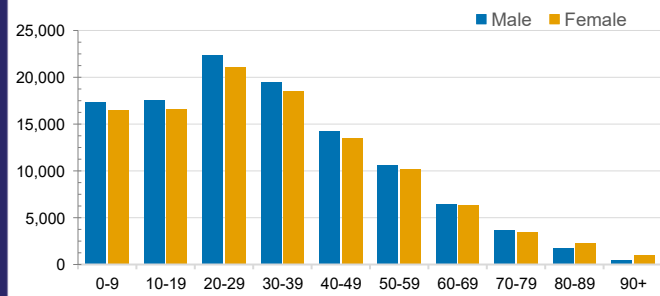


CASES IN AGED CARE SERVICES

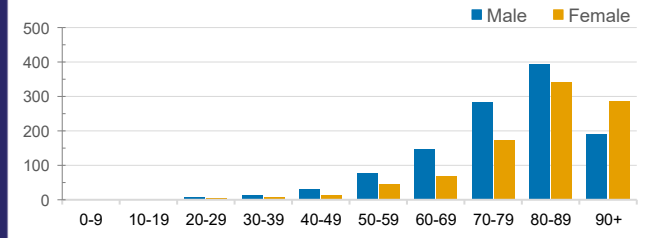
Confirmed Cases	Australia	ACT	NSW	NT	QLD	SA	TAS	VIC	WA
Residential Care Recipients	3560 [1847]	19 [8] (7)	530 [122] (101)	0	1 (1)	0	1 (1)	3009 [1717] (777)	0
In Home Care Recipients	135 [76] (11)	0	35 [15] (3)	0	8 [8]	1 [1]	5 [3] (2)	85 [49] (5)	1 (1)

Cases in care recipients [recovered] (deaths)

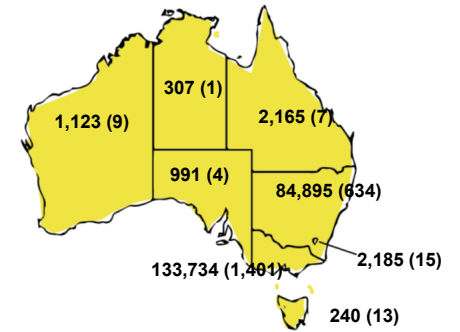
CASES BY AGE GROUP AND SEX



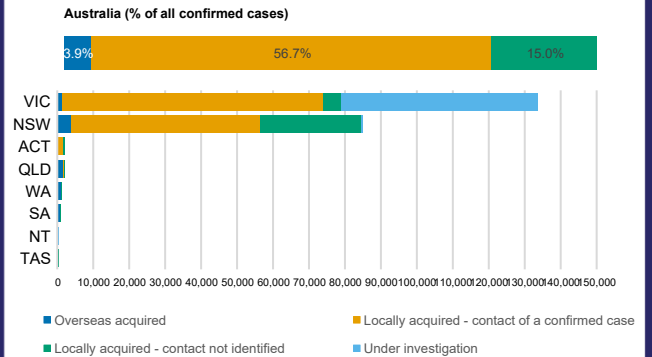
DEATHS BY AGE GROUP AND SEX



CASES (DEATHS) BY STATE AND TERRITORIES



CASES BY SOURCE OF INFECTION



PUBLIC HEALTH RESPONSE MEASURE

