



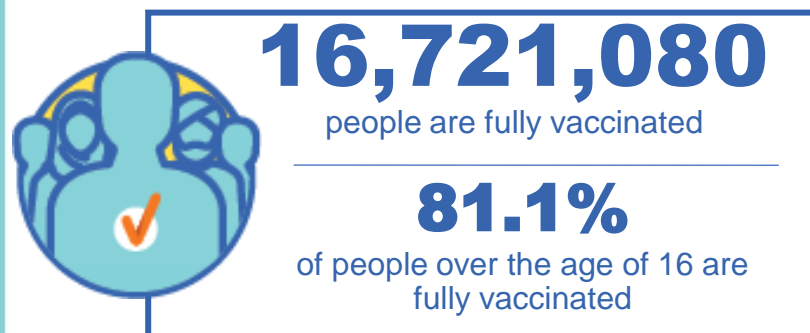
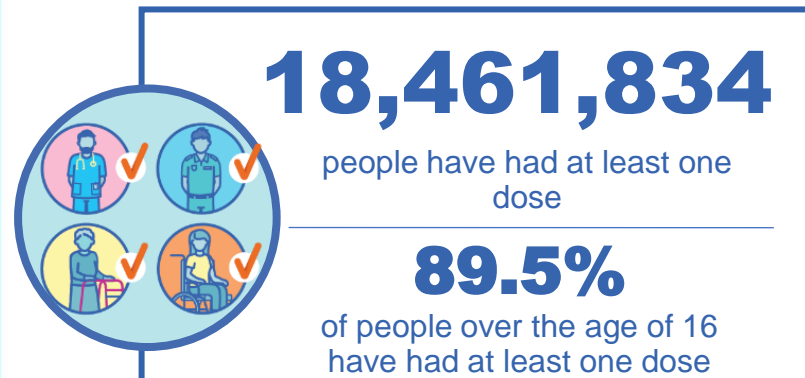
Australian Government
Operation COVID Shield

COVID-19 Vaccine Roll-out

09 November 2021

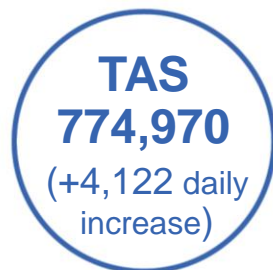
Data as at:
08 Nov 2021

Total vaccine doses



36,928,375 total vaccine doses administered nationally as at 08 November

+154,538 recorded in the last 24 hours



*Administration state breakdown indicates state in which a vaccine was administered

**Overall dose count includes instances of more than two doses per person in a small number of cases.

Source: Australian Immunisation Register

Data as at:
08 Nov 2021

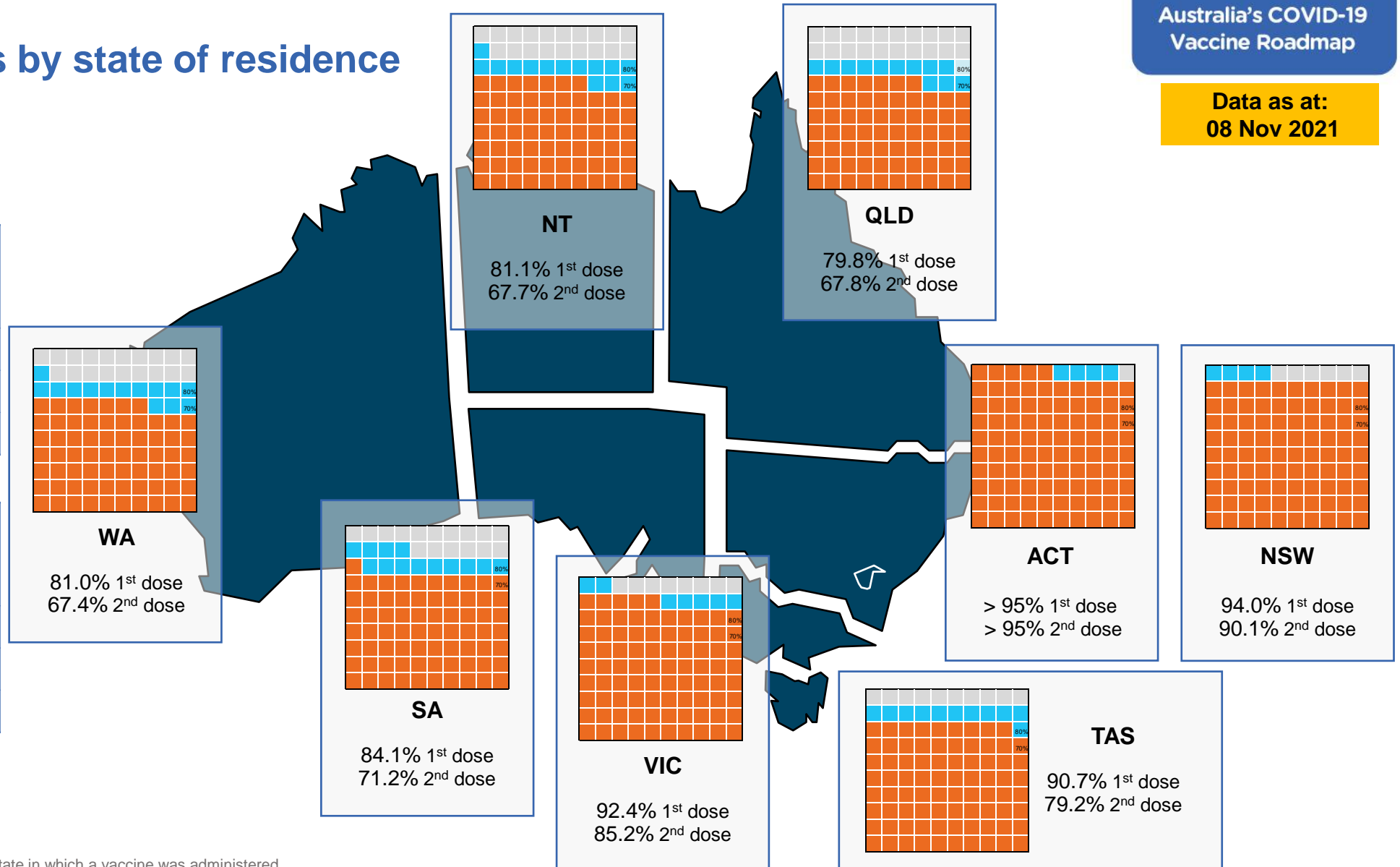
Vaccinations by state of residence

First doses

Age	Today	4 weeks ago	8 weeks ago
16+	89.5%	83.4%	69.4%
50+	>95%	92.5%	85.2%
70+	>95%	>95%	92.6%

Fully vaccinated

Age	Today	4 weeks ago	8 weeks ago
16+	81.1%	64.3%	44.1%
50+	88.9%	77.8%	63.7%
70+	92.9%	83.9%	73.0%



*Residential state may differ from the state in which a vaccine was administered

Commonwealth and Jurisdiction vaccine doses administered

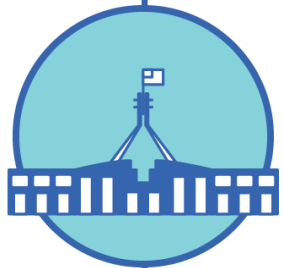
Data as at:
08 Nov 2021



36,928,375 total vaccine
doses administered nationally as at 08 November
+ 154,538 recorded in the last 24 hours



15,153,208
doses administered by state
and territory facilities
+ 47,103
recorded in the last 24 hours



21,775,167
doses administered by
commonwealth facilities
+ 107,435
recorded in the last 24 hours

20,710,353 total vaccine doses
administered in primary care settings
1,064,814 total vaccine doses
administered in aged care and disability
settings

NSW	Jurisdictions	Commonwealth
Cumulative	4,159,979	8,476,472
Daily increase	6,194	23,914

VIC	Jurisdictions	Commonwealth
Cumulative	4,630,070	5,583,682
Daily increase	10,623	31,358

QLD	Jurisdictions	Commonwealth
Cumulative	2,634,635	3,814,402
Daily increase	10,563	24,067

WA	Jurisdictions	Commonwealth
Cumulative	1,549,143	1,737,208
Daily increase	6,935	15,004

TAS	Jurisdictions	Commonwealth
Cumulative	426,903	348,067
Daily increase	1,546	2,576

SA	Jurisdictions	Commonwealth
Cumulative	1,091,906	1,220,770
Daily increase	7,375	7,355

ACT	Jurisdictions	Commonwealth
Cumulative	457,023	458,693
Daily increase	1,629	1,281

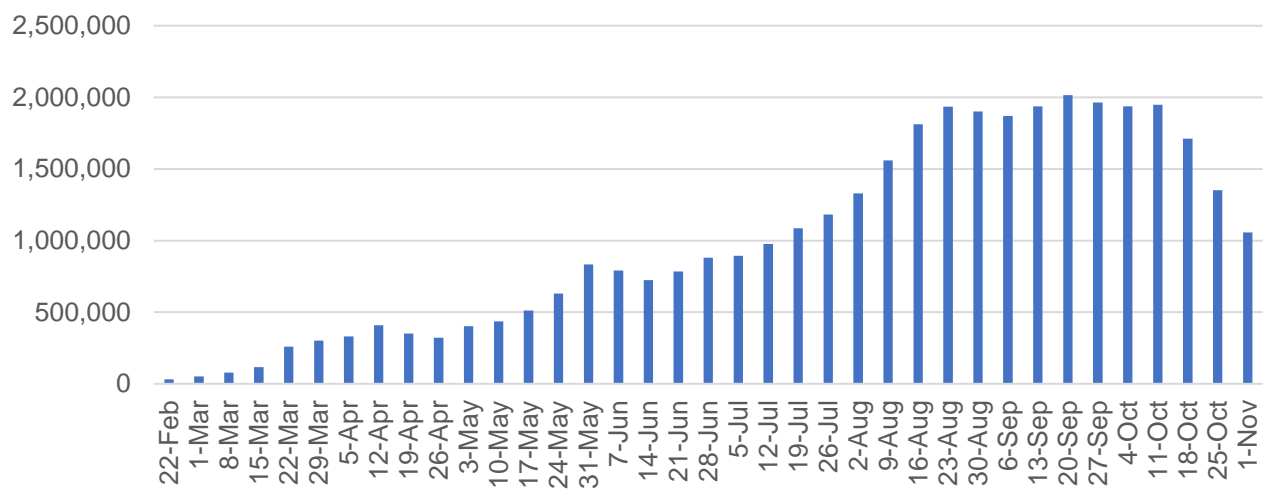
NT	Jurisdictions	Commonwealth
Cumulative	203,549	135,873
Daily increase	2,238	1,880

Vaccine milestone charts

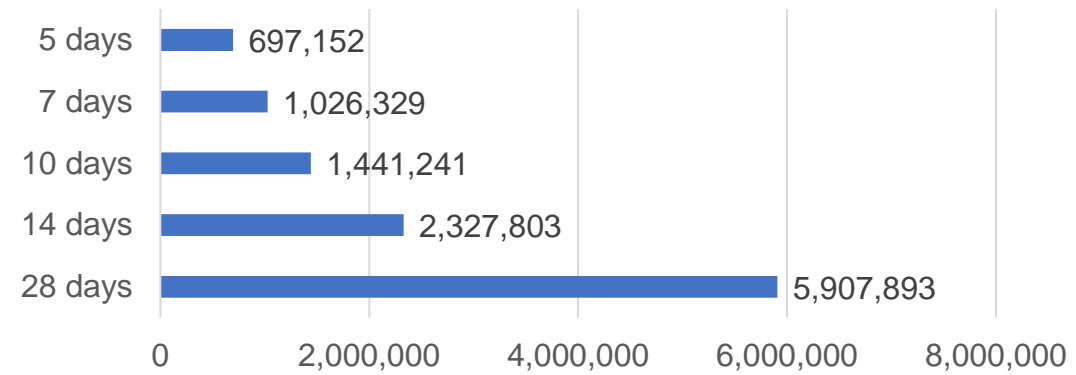
Data as at:
08 Nov 2021

Australia's COVID-19
Vaccine Roadmap

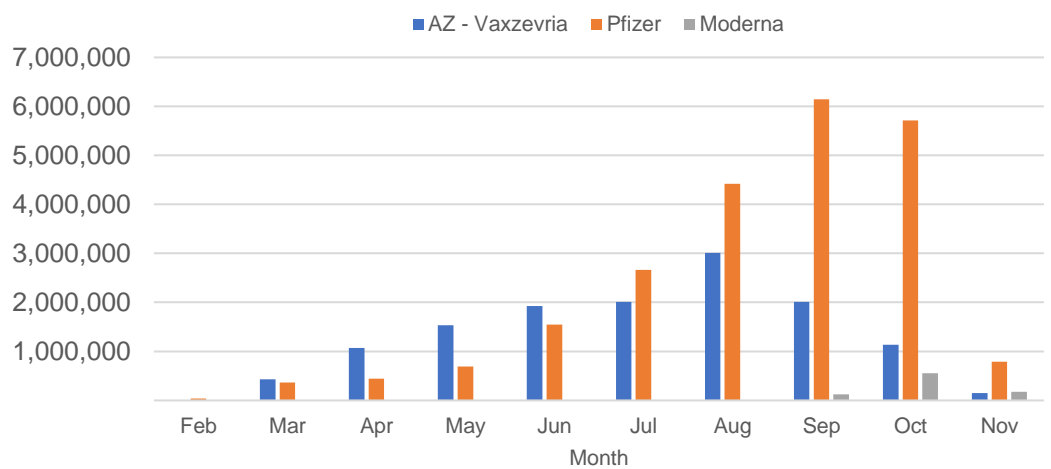
Doses Administered by Week



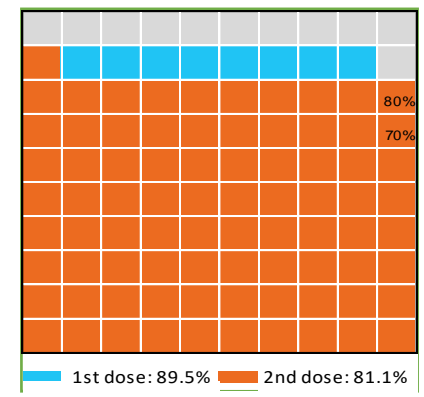
Doses Reported



Doses by administration month and vaccine type



Eligible population percentage coverage



*Sourced from the Australian Immunisation Register.

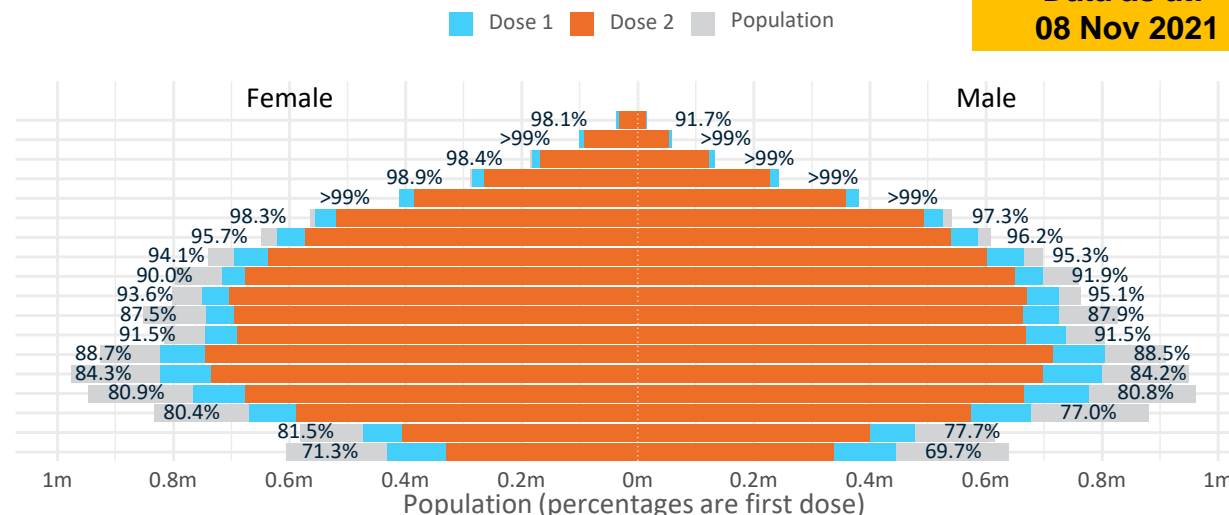
*Each square represents 1% of the national population. Squares are filled as milestones are achieved.

Data as at:
08 Nov 2021

Doses by age and sex

First and second doses by age and sex

Age	Dose 1	Dose 2
95+	51,002 (96.4%)	45,264 (85.5%)
90-94	158,390 (>99%)	143,901 (90.8%)
85-89	315,592 (>99%)	290,406 (91.8%)
80-84	528,962 (>99%)	493,154 (93.3%)
75-79	791,683 (>99%)	743,152 (96.0%)
70-74	1,081,849 (97.9%)	1,011,521 (91.5%)
65-69	1,208,868 (96.1%)	1,112,750 (88.4%)
60-64	1,361,619 (94.8%)	1,238,932 (86.2%)
55-59	1,415,540 (91.0%)	1,327,871 (85.4%)
50-54	1,477,097 (94.4%)	1,374,261 (87.8%)
45-49	1,471,300 (87.7%)	1,358,446 (81.0%)
40-44	1,484,724 (91.6%)	1,359,898 (83.9%)
35-39	1,630,662 (88.9%)	1,463,918 (79.8%)
30-34	1,628,016 (84.6%)	1,438,516 (74.8%)
25-29	1,551,685 (81.4%)	1,348,012 (70.7%)
20-24	1,353,397 (79.0%)	1,166,534 (68.1%)
16-19	951,448 (79.6%)	804,544 (67.3%)
12-15	876,532 (70.5%)	668,096 (53.7%)



	AUS	ACT	NSW	NT	QLD	SA	TAS	VIC	WA
16 and over - dose 1	18,461,834	343,304	6,169,754	154,464	3,283,721	1,210,706	399,104	4,994,988	1,713,685
16 and over - dose 2	16,721,080	328,399	5,917,265	128,967	2,790,013	1,026,060	348,475	4,606,022	1,424,875
16 and over - population	20,619,959*	344,037	6,565,651	190,571	4,112,707	1,440,400	440,172	5,407,574	2,114,978
16 and over % with dose 1	89.53%	>99%	93.97%	81.05%	79.84%	84.05%	90.67%	92.37%	81.03%
16 and over % with dose 2	81.09%	95.45%	90.12%	67.67%	67.84%	71.23%	79.17%	85.18%	67.37%
50 and over - dose 1	8,390,602	133,049	2,753,777	53,567	1,604,034	623,531	208,499	2,150,591	810,105
50 and over - dose 2	7,781,212	128,328	2,658,173	47,859	1,436,783	550,243	188,263	2,015,249	712,710
50 and over - population	8,749,703	127,802	2,807,793	62,280	1,758,855	674,384	220,036	2,211,211	885,370
50 and over % with dose 1	95.90%	>99%	98.08%	86.01%	91.20%	92.46%	94.76%	97.26%	91.50%
50 and over % with dose 2	88.93%	>99%	94.67%	76.84%	81.69%	81.59%	85.56%	91.14%	80.50%
70 and over - dose 1	2,927,478	43,273	970,860	11,064	559,065	234,961	76,740	739,451	271,094
70 and over - dose 2	2,727,398	41,601	934,070	10,036	510,938	209,483	69,522	692,001	242,074
70 and over - population	2,934,706	39,946	962,606	12,343	577,767	240,514	77,155	743,519	280,281
70 and over % with dose 1	>99%	>99%	>99%	89.64%	96.76%	97.69%	>99%	>99%	96.72%
70 and over % with dose 2	92.94%	>99%	97.04%	81.31%	88.43%	87.10%	90.11%	93.07%	86.37%
12 to 15 - dose 1	876,532	19,491	313,016	7,811	148,747	45,382	16,932	255,818	63,351
12 to 15 - dose 2	668,096	17,795	274,834	4,924	93,550	25,591	9,887	202,124	35,718
12 to 15 - population	1,243,990	19,693	390,330	13,060	270,146	82,747	26,308	308,611	132,869
12 to 15 % with dose 1	70.46%	98.97%	80.19%	59.81%	55.06%	54.84%	64.36%	82.89%	47.68%
12 to 15 % with dose 2	53.71%	90.36%	70.41%	37.70%	34.63%	30.93%	37.58%	65.49%	26.88%

*National population will not equal sum of listed jurisdictions due to a small number of people counted in national population residing in some 'other' territories. Sum of state doses will not add to national total as some records are unable to be geocoded to a State or Territory.

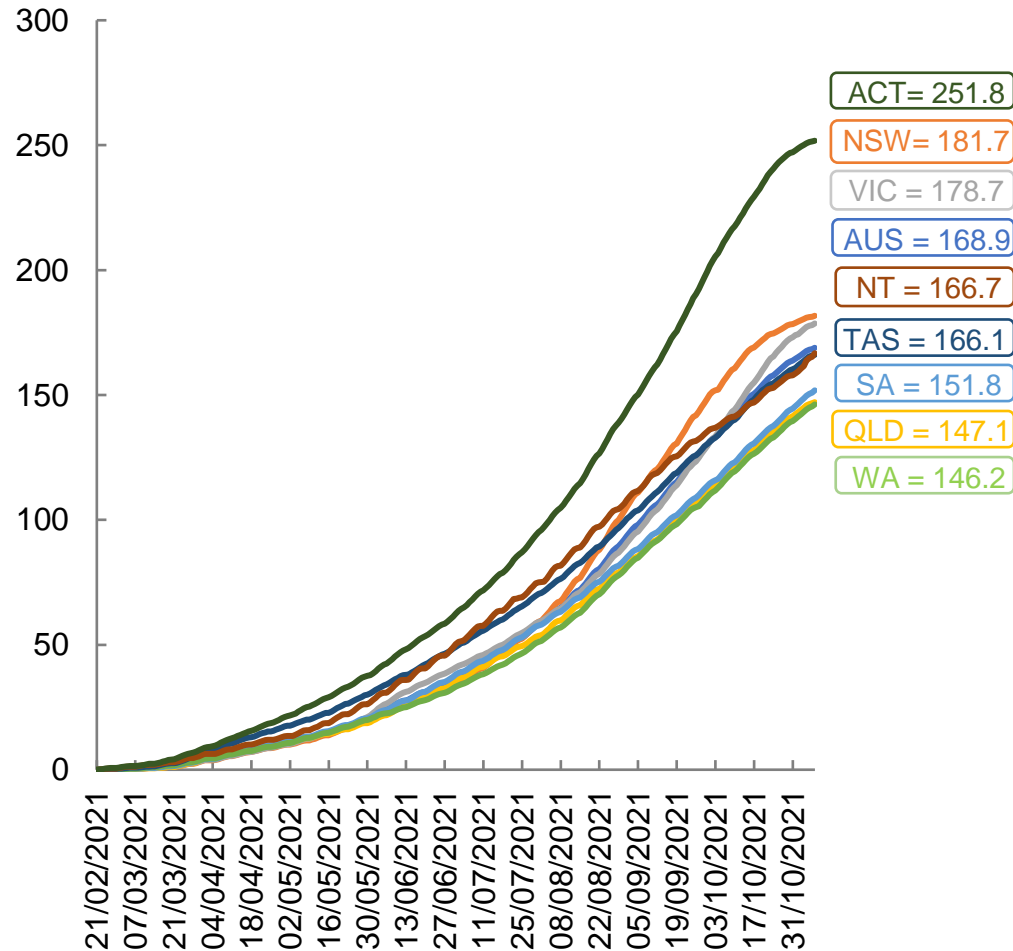
Doses sourced from Australian Immunisation Register, population from ABS ERP June 2020

Vaccinations by location

Data as at:
08 Nov 2021

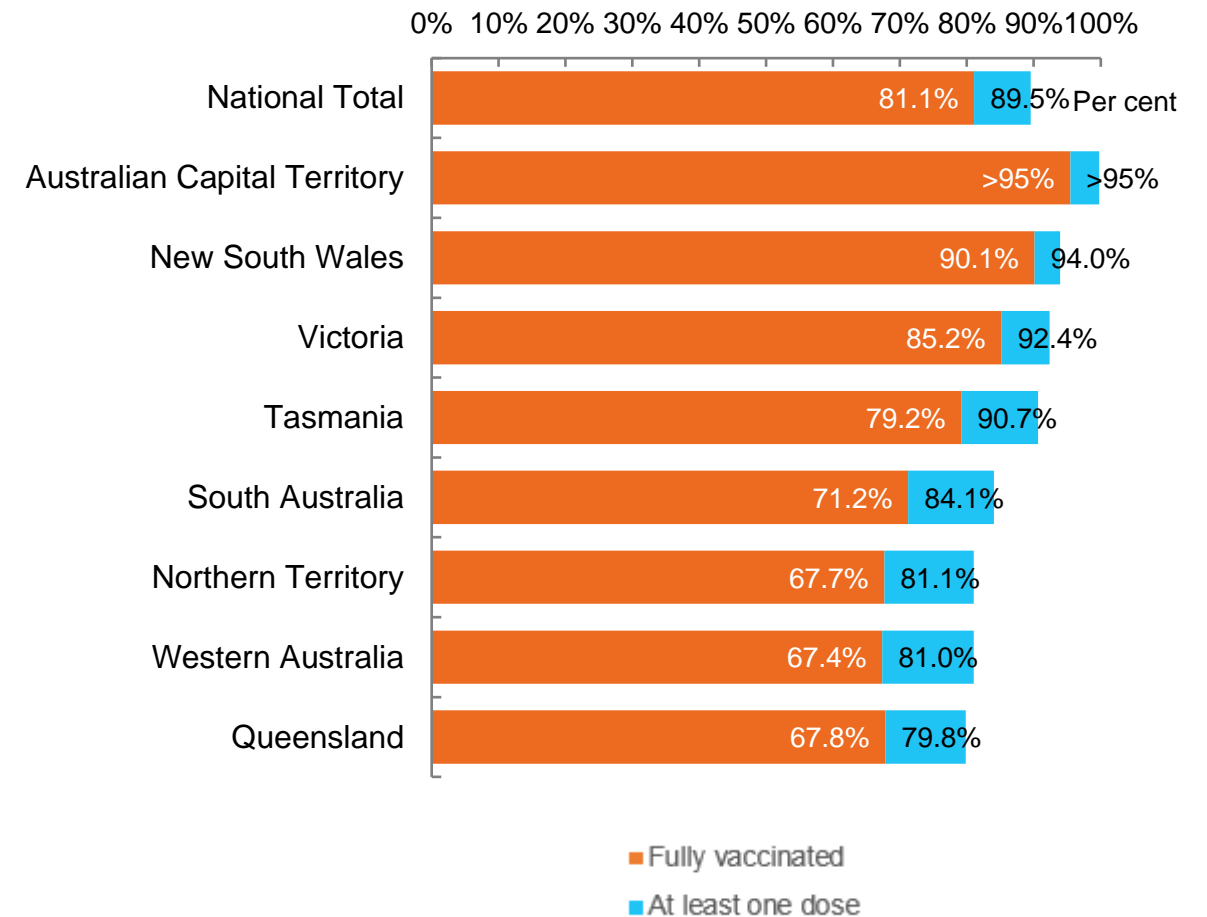
Australia's COVID-19
Vaccine Roadmap

Cumulative total doses administered vs eligible state populations*



*Not an indication of percentage vaccinated, numbers will exceed 100 due to multiple doses required per person of the population. All doses are included, including those for the 12-15 cohort, and are based on vaccination provider location.

First and Second Doses by state of residence



Aboriginal and Torres Strait Islander peoples

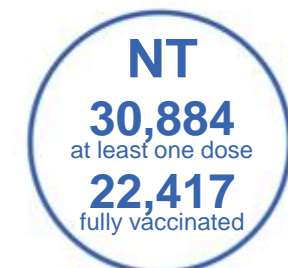
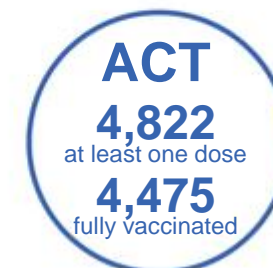
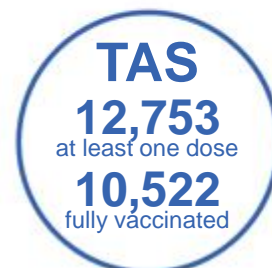
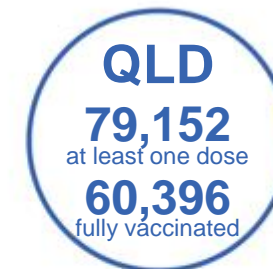
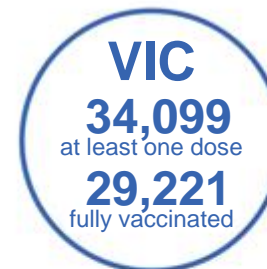
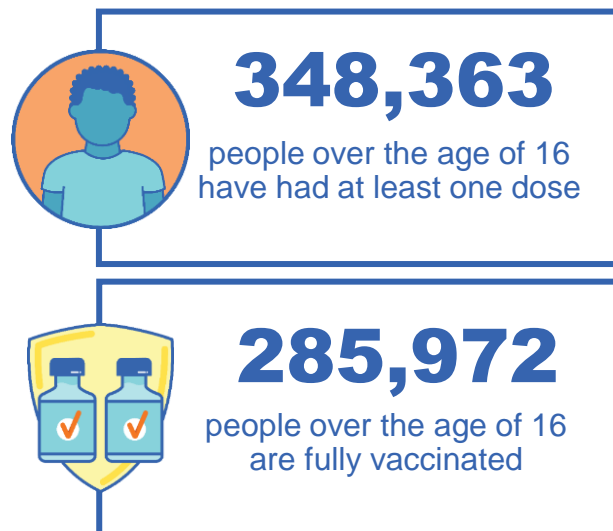
Number of people vaccinated

Data as at:
07 Nov 2021
Updated weekly

Australia's COVID-19
Vaccine Roadmap

170 Aboriginal community controlled health services (ACCHS)

0#	50	26	40	12	3	21	18
ACT	NSW	NT	QLD	SA	TAS	VIC	WA



9,694 people with at least one dose
6,626 people fully vaccinated

residing in other territories or with missing residential information
Source: Australian Immunisation Register

*Identifying as Aboriginal and Torres Strait Islander is optional and the estimated population may be under reported.

**Includes all Aboriginal and Torres Strait Islander peoples who have received a vaccination, not limited to those administered in an ACCHS setting

***Updated weekly.

#ACCHS in the ACT are currently operating as a Commonwealth Vaccine Clinics so not included to avoid double counting

Data as at:
08 Nov 2021

Commonwealth primary care



Primary care vaccine administration sites

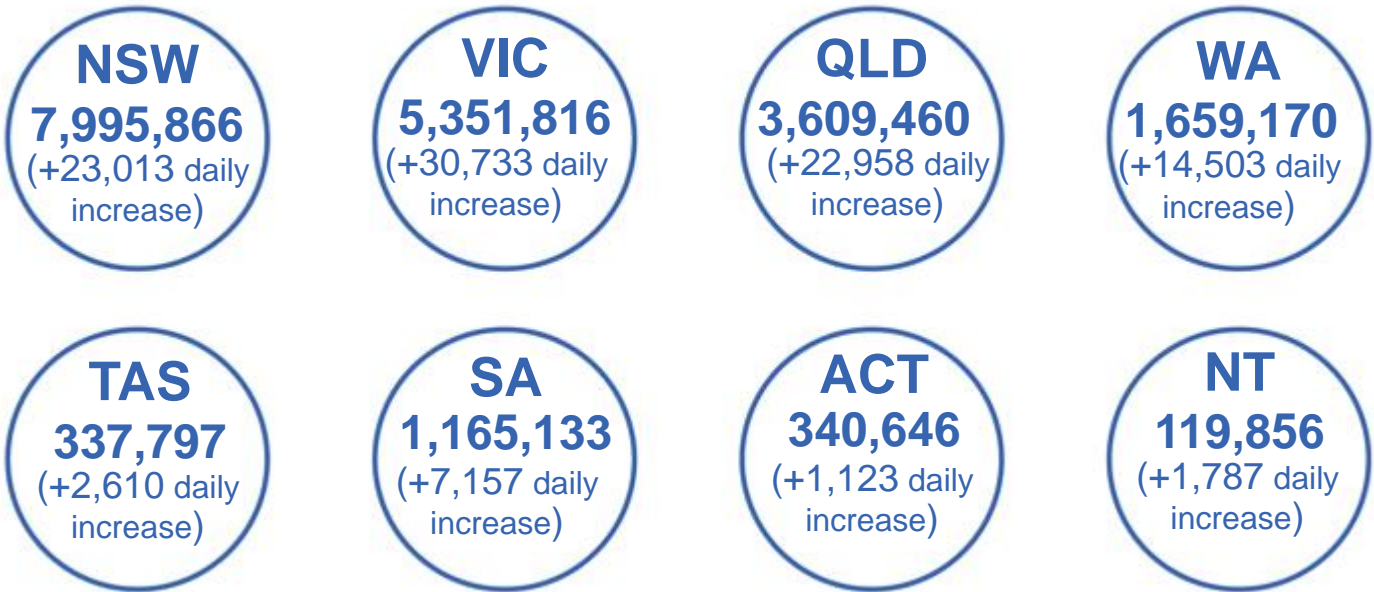
5,611	137	170	3,434
GPs	CVCs	ACCHS	Pharmacies



20,710,353 total vaccine doses administered
primary care settings as at 08 November
+ 106,480 recorded in the last 24 hours

Primary care vaccinations by provider type

	Doses administered	Daily increase	7 day increase
General Practice* includes other Commonwealth	18,821,937	76,817	485,044
Pharmacy	1,888,416	29,663	184,311



130,609 doses administered to persons
residing in other territories or with
missing residential information

*General practice includes Commonwealth Vaccination Clinics, Aboriginal Community Health Centres, Royal Flying Doctor Service and other Commonwealth vaccination facilities

Source: Australian Immunisation Register

Data as at:
08 Nov 2021

Commonwealth aged care and disability doses administered



1,064,814 (+ 955 last 24 hours)

Total vaccine doses administered in aged care and disability facilities as at 08 November

Number of doses administered as part of the Commonwealth aged and disability care rollout

NSW
512,194
(+67 daily increase)

VIC
198,651
(+114 daily increase)

QLD
156,824
(+172 daily increase)

WA
72,941
(+184 daily increase)

TAS
17,075
(+2 daily increase)

SA
63,142
(+238 daily increase)

ACT
13,150
(+0 daily increase)

NT
5,950
(+61 daily increase)

24,887

doses administered to persons
residing in other territories or with
missing residential information

*Sourced from the Australian Immunisation Register. Includes all persons vaccinated at participating residential aged care, disability and related industry settings.

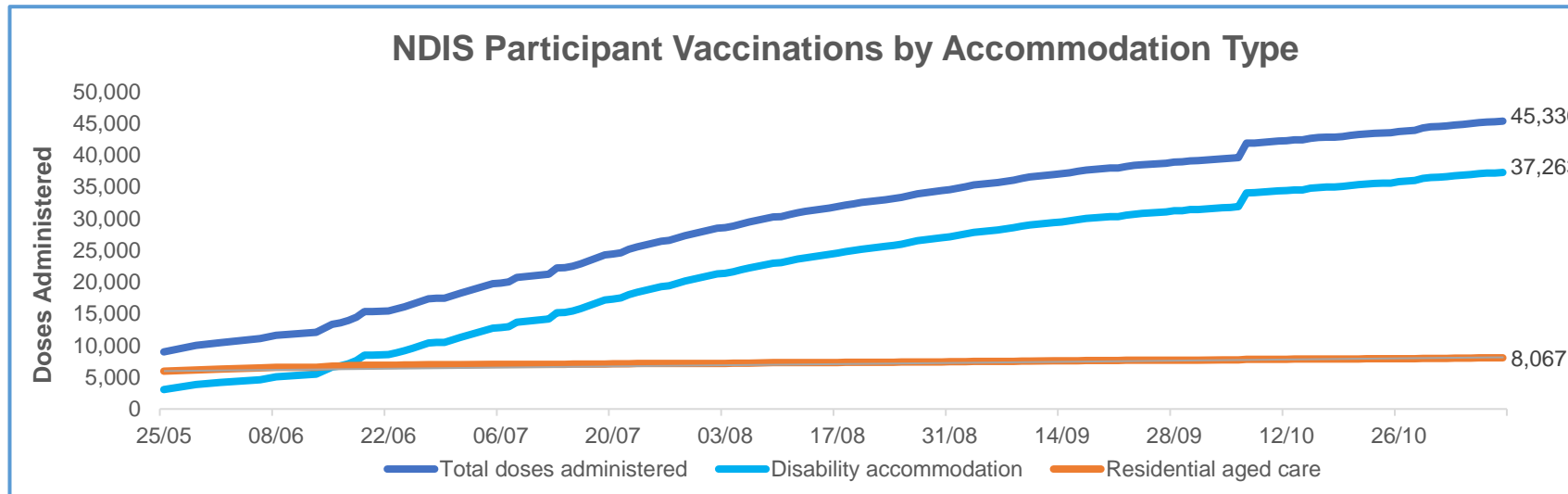
**State level breakdown indicates the residential location and may not align to the state in which the vaccination occurred.

Source: Australian Immunisation Register

Data as at:
08 Nov 2021*

Vaccination rate of people with disability and the disability workforce

Phase 1a – People with disability living in shared accommodation



	Total people with at least one dose	People fully vaccinated	Total number of individuals in cohort	Total doses administered	% People with at least one dose	% People fully vaccinated
NDIS participants living in shared accommodation **	4,151	3,916	8,067	4,803	86.4%	81.5%
NDIS screened workers ***	23,348	21,982	45,330	27,603	84.6%	79.6%



* Updates are available Monday to Friday on participants, and bi-weekly for workers, numbers may be up to four days old.

** Shared accommodation means two or more people with disability living in shared residential accommodation and NDIS participants living in Residential Aged Care accommodation as per the eligibility criteria of Phase 1a.

*** Total number of workers within the NDIS Commission Worker Screening database who have ever been successfully screened and linked to an NDIS registered provider or participant.

Source: Linkage between National Disability Insurance Agency data, NDIS Quality and Safeguards Commission data and the Australian Immunisation Register.

Residential aged care vaccination rollout

Residential aged care facilities status

100% Commonwealth facilities visited (2,573 planned sites)

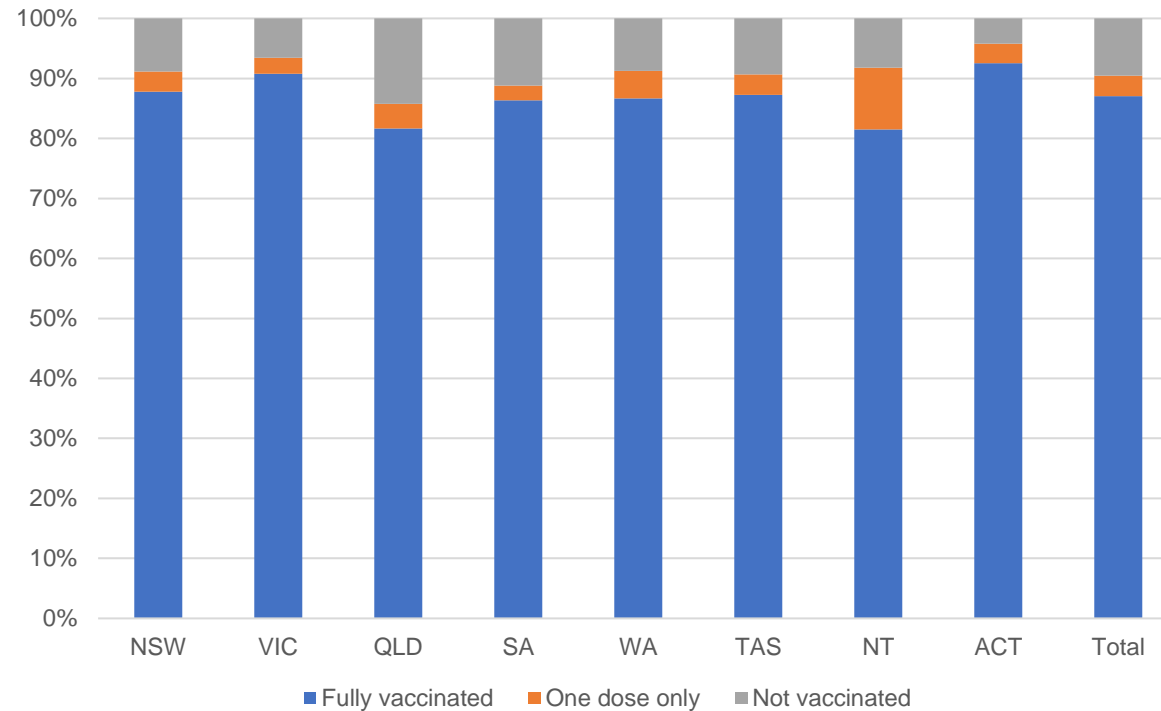
162,237 People fully vaccinated

168,566 People with at least one dose

Australia's COVID-19 Vaccine Roadmap

Data as at:
7 Nov 2021

Aged care resident vaccinations



Aged care worker vaccinations

Jurisdictions	Total workers with at least one dose	Workers fully vaccinated	% Workers with at least one dose	% Workers fully vaccinated
NSW	78,295	77,225	99.6%	98.3%
VIC	71,359	67,856	97.5%	92.7%
QLD	48,188	46,788	99.5%	96.6%
SA	27,424	25,998	100.0%	94.8%
WA	23,769	21,644	99.8%	90.9%
TAS	7,648	7,214	100.0%	94.3%
NT	823	818	99.5%	98.9%
ACT	2,978	2,897	99.8%	97.1%
Total	260,484	250,440	99.1%	95.3%

Source: My Aged Care Portal staff vaccination progress

**Resident vaccination information is reported manually by service providers

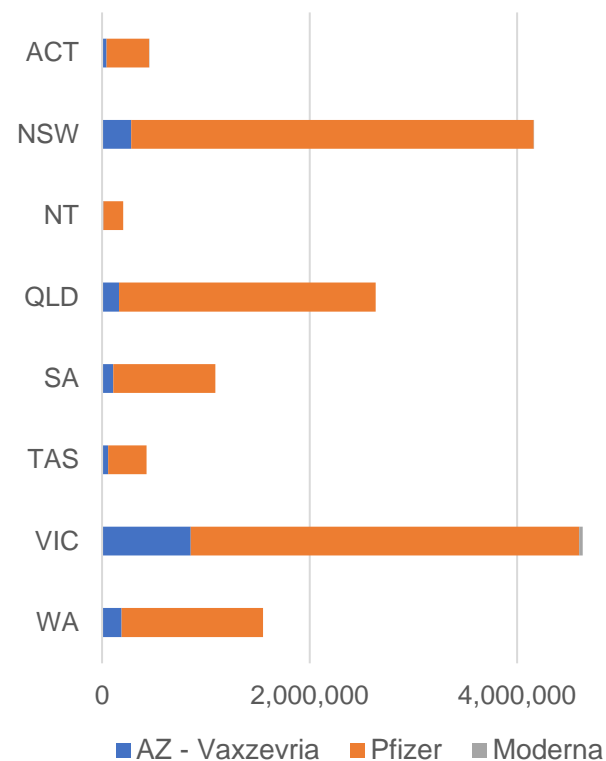
*Status updates are provided by facilities at least once per week. Reporting is updated Monday to Friday to encompass different facility updates being made on different days.

Data is sourced directly from Aged Care Service Providers and is not drawn or closely aligned with data from AIR due to inconsistencies and potential lags in uploading of records.

Data as at:
08 Nov 2021

Jurisdiction administered

Total vaccine doses administered in State and Territory clinics as at 08 November



15,153,208 total vaccine doses administered
in State and Territory clinics as at 08 November
+ 47,103 recorded in the last 24 hours
+ 347,800 recorded in the last 7 days

NSW
4,159,979
(+6,194 daily
increase)

VIC
4,630,070
(+10,623 daily
increase)

QLD
2,634,635
(+10,563 daily
increase)

WA
1,549,143
(+6,935 daily
increase)

TAS
426,903
(+1,546 daily
increase)

SA
1,091,906
(+7,375 daily
increase)

ACT
457,023
(+1,629 daily
increase)

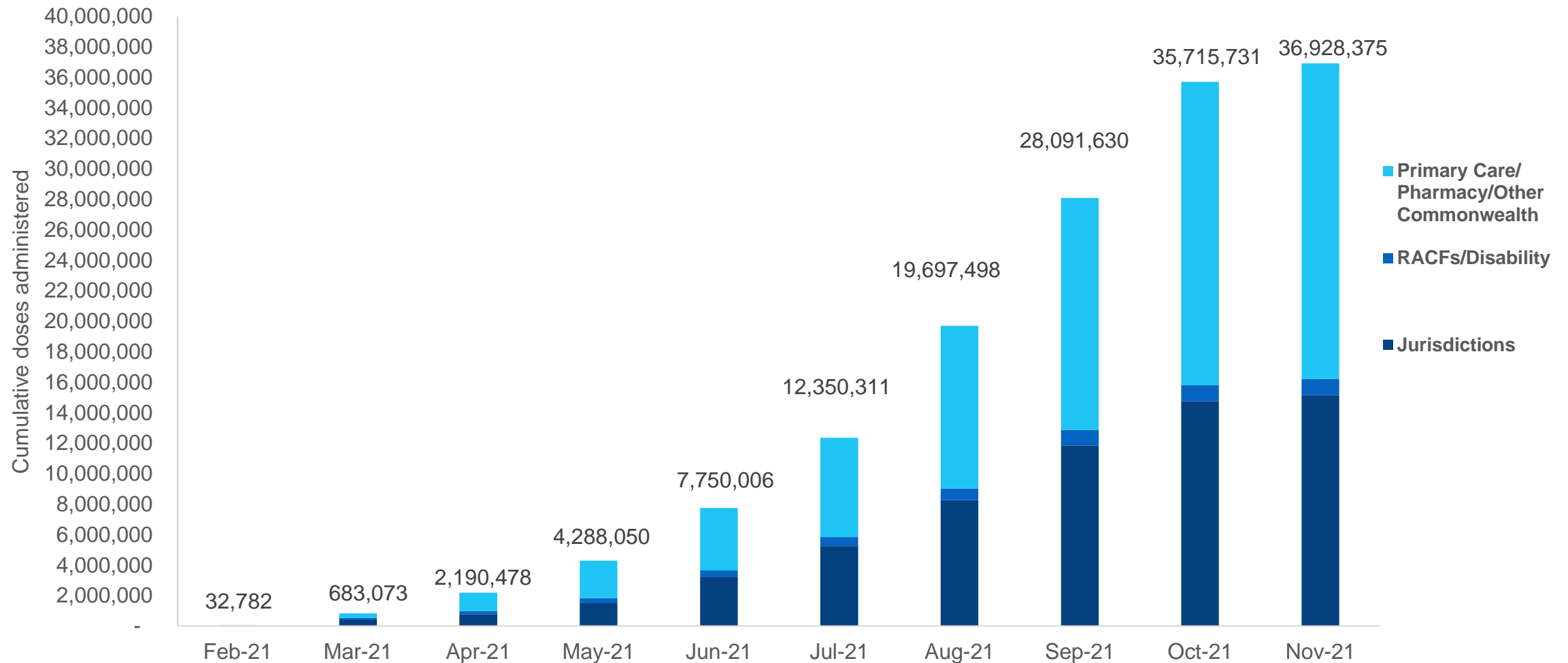
NT
203,549
(+2,238 daily
increase)

*Sourced from the Australian Immunisation Register and self-reported data. Numbers are calculated as difference in daily cumulative reported numbers to allow for historical corrections in all self-reported data sources.

Cumulative doses administered by channel

Data as at:
08 Nov 2021

Australia's COVID-19
Vaccine Roadmap



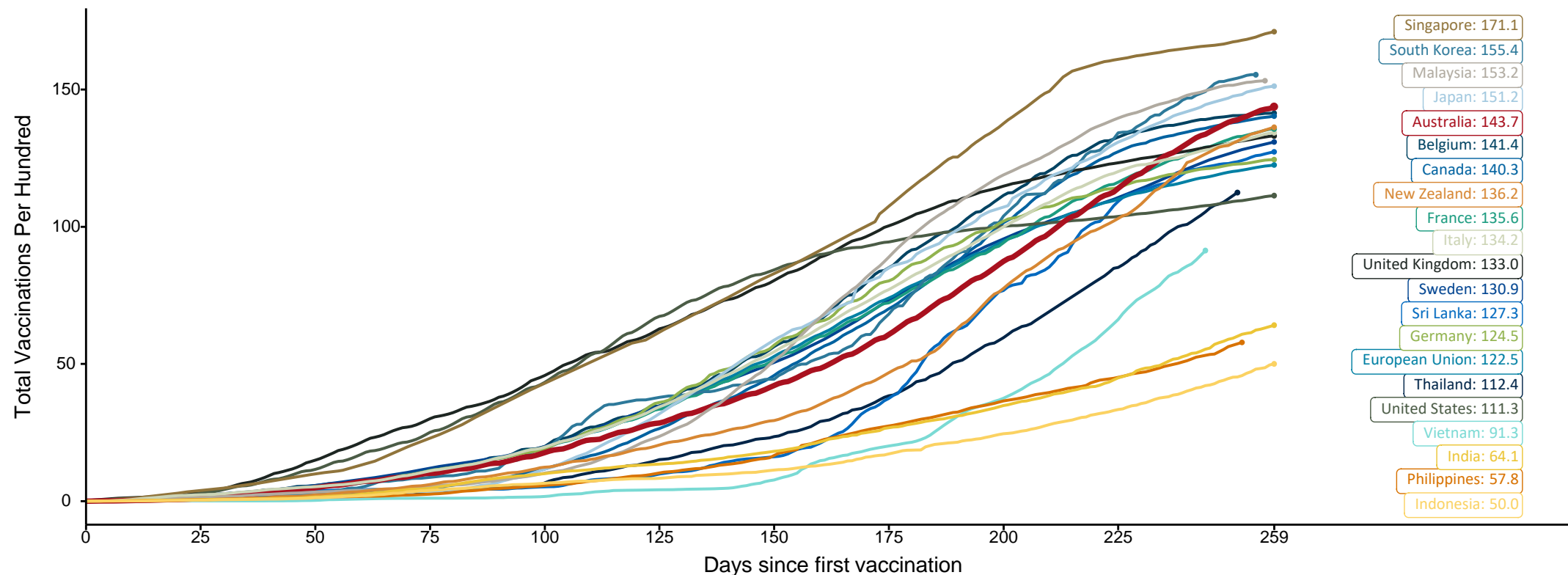
Source: Australian Immunisation Register

Doses at equivalent stages of rollout (Day 259)

Data as at:
08 Nov 2021

The x-axis is truncated at the length of Australia's vaccination program. Countries with intermittent reporting have had their doses per 100 imputed to Australia's current stage of rollout. Israel excluded as it is beyond scale of the graph

Cumulative doses administered (08 Nov): **36,928,375**

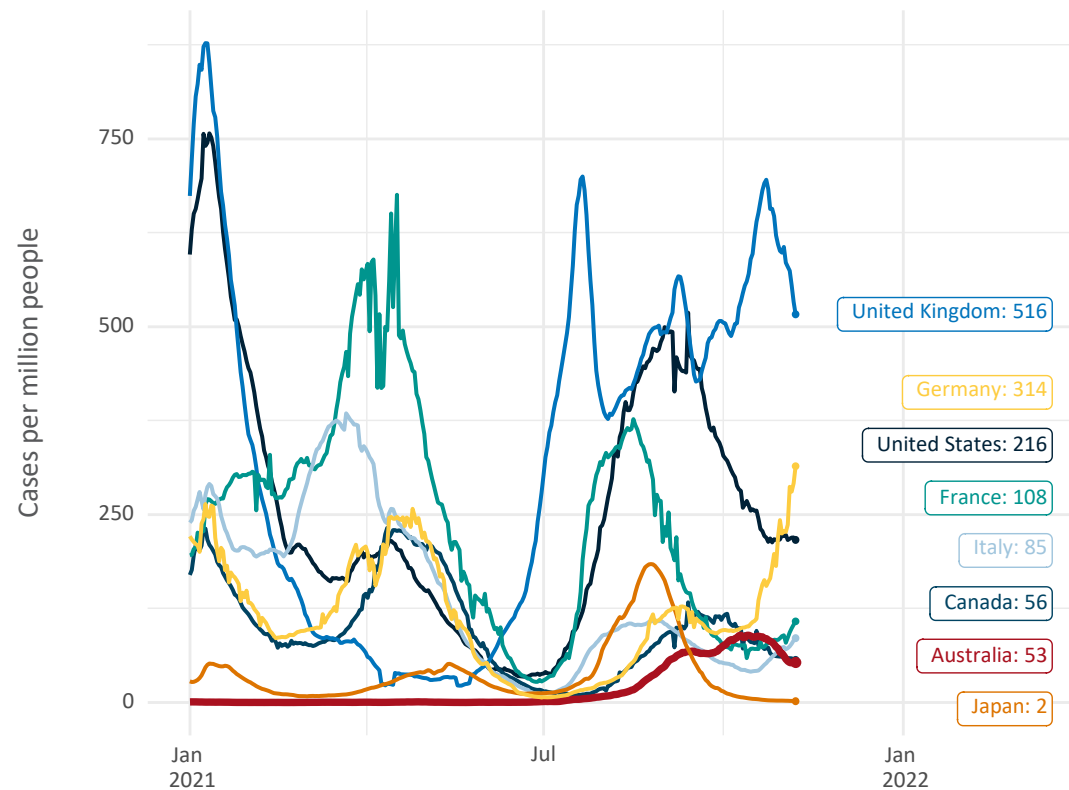


Note: From 15 September 2021, data for Australia includes all doses administered to people 12 and over. Prior to 15 September, data was for 16 and over
Source: Department of Health (Australia), Our World in Data (international)
Latest data: 08 November

International data – COVID-19

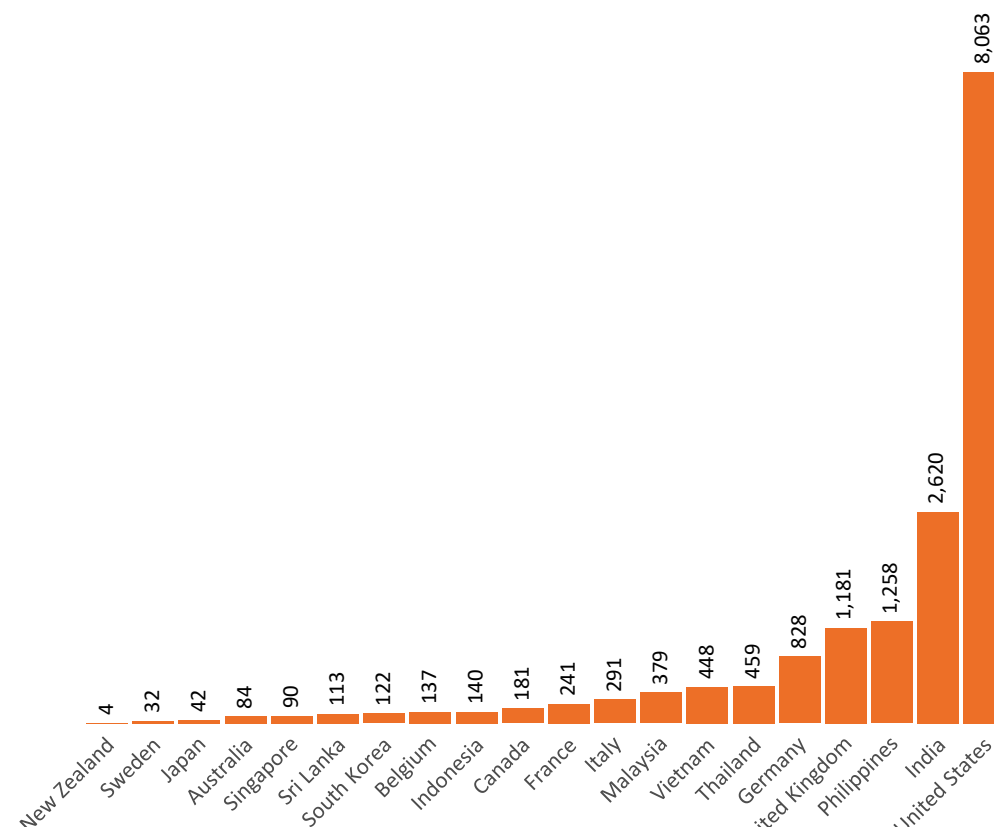
Data as at:
08 Nov 2021

New daily cases per million in 2021, Australia and G7 countries
Smoothed - 7 day average



Source: OWID
Data downloaded: 09 Nov 2021 14:58
Latest data: 07 Nov 2021

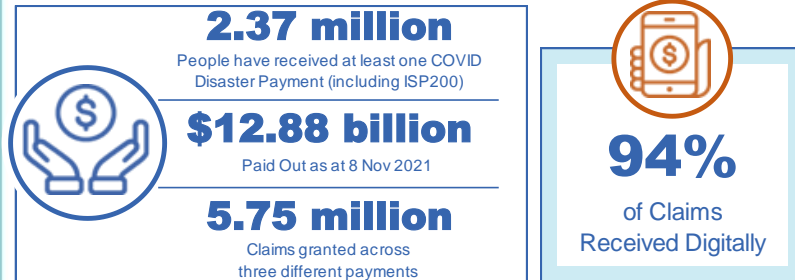
COVID-19 deaths in past 7 days - Australia and select countries



Source: OWID
Data downloaded: 09 Nov 2021 14:58
Latest data: 07 Nov 2021

Data as at midnight:
8 Nov 2021

Pandemic Response Payments (Current)



COVID Disaster Payment:	5.57 million claims received - 2.19 million individuals paid a total of \$12.44 billion.
\$200 Income Support Payment:	336,000 claims received - 182,000 individuals paid a total of \$266.42 million.
Pandemic Leave Disaster Payment:	123,000 claims received - 105,000 individuals paid a total of \$171.72 million.



COVID Disaster Payment

assisting during a lockdown event in a Commonwealth hotspot.

Income Support Payment \$200

for income support recipients who lost at least 8 hours of work.

Pandemic Leave Disaster Payment

for those who have to self-isolate, quarantine or care.

For more information visit:
servicesaustralia.gov.au

CURRENT COVID-19 DISASTER PAYMENTS

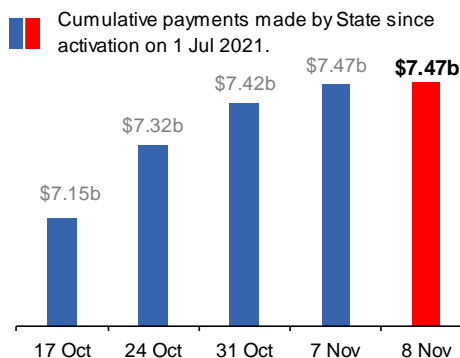
New South Wales

Active lockdown since 24 Jun
Partial reopening from 10 Oct

1.08m people have received at least one COVID Disaster Payment.

\$7.47b paid out as at 8 Nov 2021.

\$46m paid in initial and reoccurring payments in the week ending 7 Nov 2021.



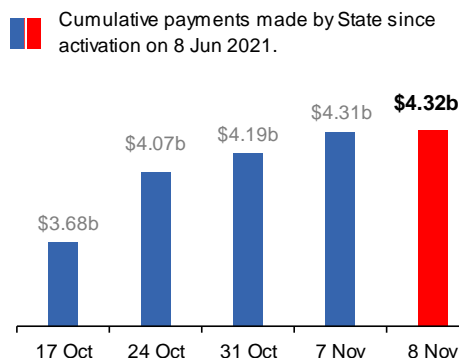
Victoria

Active lockdown (#6) since 6 Aug
Partial reopening from 28 Oct

741,000 people have received at least one COVID Disaster Payment.

\$4.32b paid out as at 8 Nov 2021.

\$121m paid in initial and reoccurring payments in the week ending 7 Nov 2021.



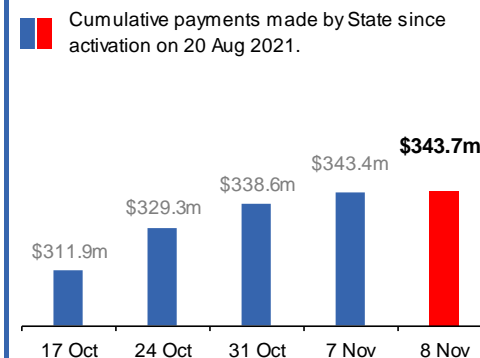
Australian Capital Territory

Active lockdown since 12 Aug
Partial reopening from 14 Oct

65,000 people have received at least one COVID Disaster Payment.

\$343.7m paid out as at 8 Nov 2021.

\$4.8m paid in initial and reoccurring payments in the week ending 7 Nov 2021.



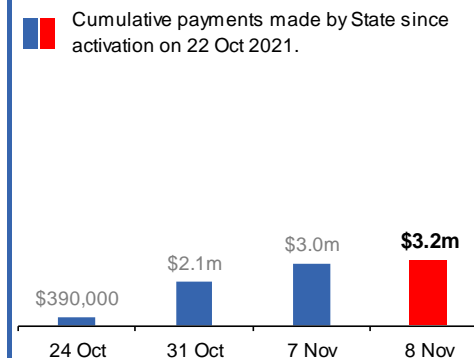
Tasmania

Lockdown from 15 Oct to 18 Oct
Claiming period ends 12 Nov

5,900 people have received at least one COVID Disaster Payment.

\$3.1m paid out as at 8 Nov 2021.

\$941,000 paid in initial payments in the week ending 7 Nov 2021.



Pandemic Response Payments (Closed Events)

Data as at midnight:
8 Nov 2021

CLOSED COVID-19 DISASTER PAYMENTS


Northern Territory

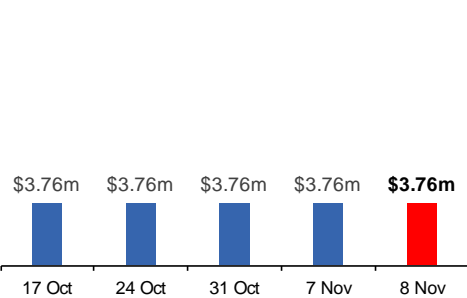
Lockdown from 18 – 20 Jul
Claiming period ended 13 Sep

5,800 people have received at least one COVID Disaster Payment.

\$3.76m paid out as at 8 Nov 2021.

\$1,000 paid in initial payments in the week ending 7 Nov 2021.

 Cumulative payments made by State since activation on 25 Aug 2021.




Queensland

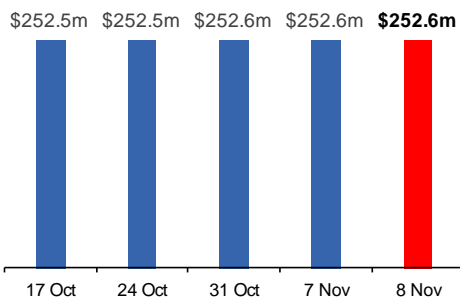
Lockdown from 31 Jul – 11 Aug
Claiming period ended 28 Aug

196,000 people have received at least one COVID Disaster Payment.

\$252.6m paid out as at 8 Nov 2021.

\$15,000 paid in initial and reoccurring payments in the week ending 7 Nov 2021.

 Cumulative payments made by State since activation on 7 Aug 2021.




South Australia

Lockdown from 21 – 27 Jul
Claiming period ended 17 Aug

86,000 people have received at least one COVID Disaster Payment.

\$48.2m paid out as at 8 Nov 2021.

\$600 paid in initial payments in the week ending 7 Nov 2021.

 Cumulative payments made by State since activation on 28 Jul 2021.

