



Australian Government
Operation COVID Shield

COVID-19 Vaccine Roll-out

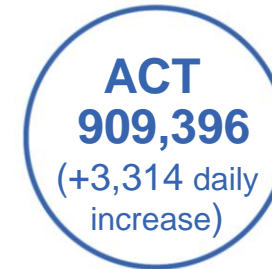
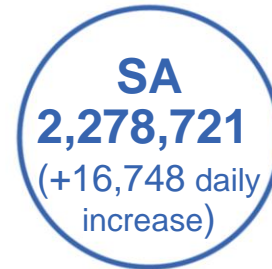
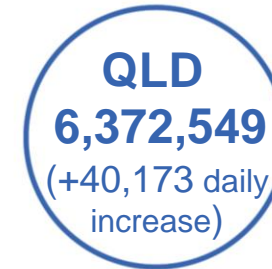
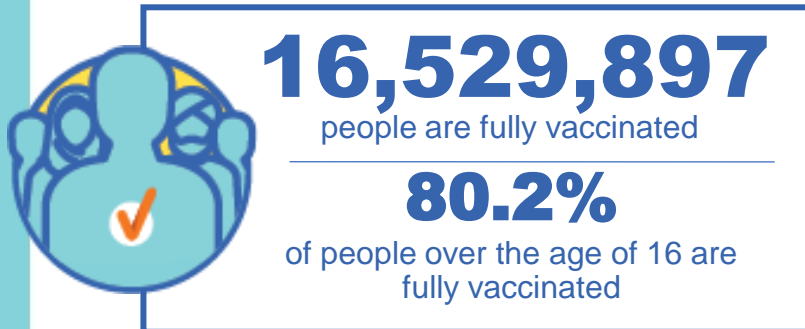
06 November 2021

Data as at:
05 Nov 2021

Total vaccine doses



36,602,527 total vaccine doses administered nationally as at 05 November
+189,471 recorded in the last 24 hours



*Administration state breakdown indicates state in which a vaccine was administered
**Overall dose count includes instances of more than two doses per person in a small number of cases.

Data as at:
05 Nov 2021

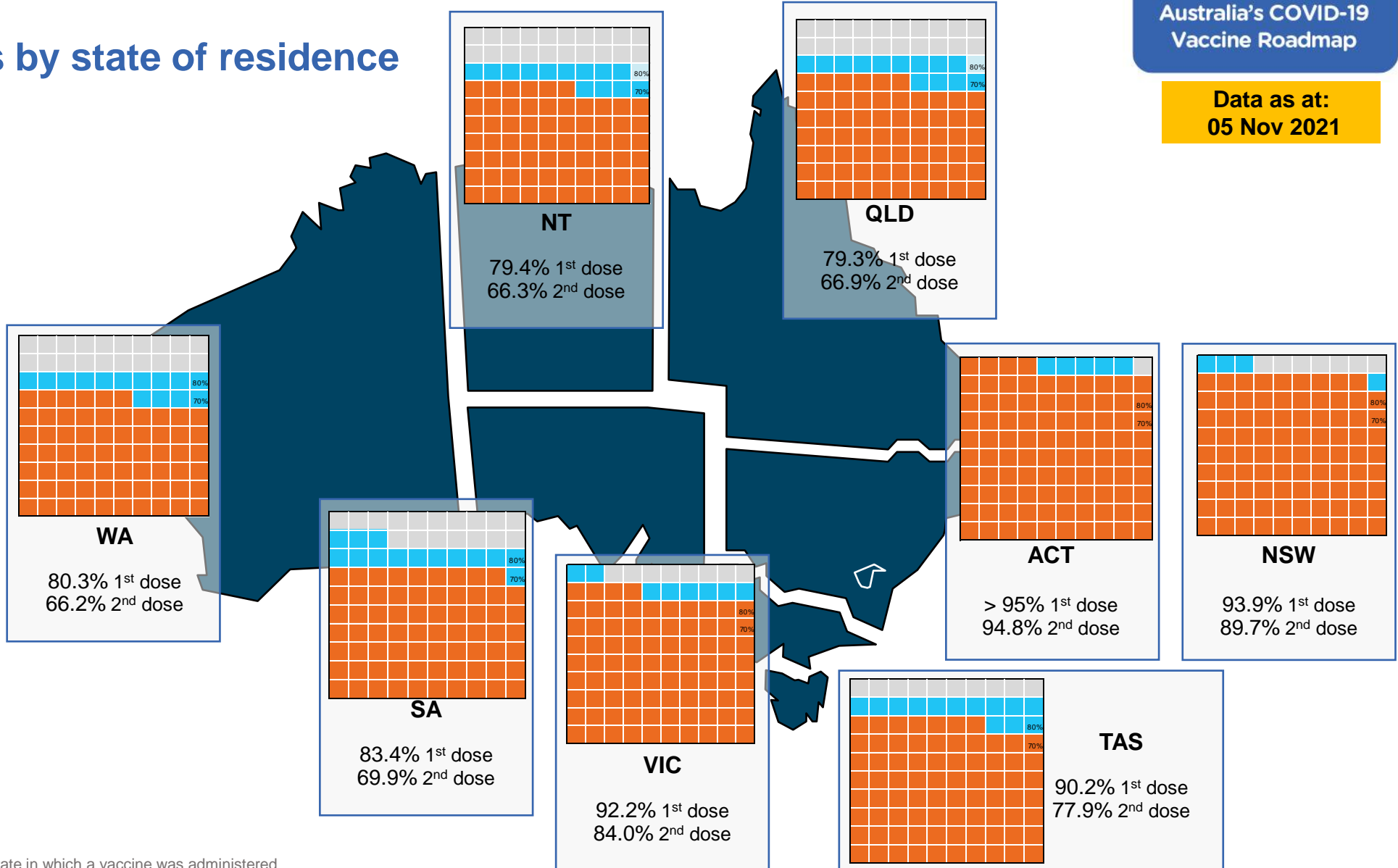
Vaccinations by state of residence

First doses

Age	Today	4 weeks ago	8 weeks ago
16+	89.2%	82.5%	67.9%
50+	>95%	92.0%	84.5%
70+	>95%	>95%	92.2%

Fully vaccinated

Age	Today	4 weeks ago	8 weeks ago
16+	80.2%	62.1%	42.7%
50+	88.3%	76.7%	62.4%
70+	92.4%	83.1%	72.1%



*Residential state may differ from the state in which a vaccine was administered

Commonwealth and Jurisdiction vaccine doses administered

Data as at:
05 Nov 2021



36,602,527 total vaccine doses administered nationally as at 05 November

+ 189,471 recorded in the last 24 hours

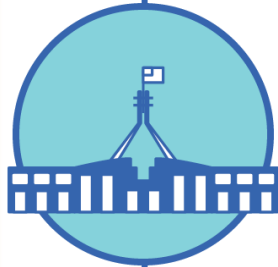


15,015,505

doses administered by state and territory facilities

+ 59,686

recorded in the last 24 hours



21,587,022

doses administered by commonwealth facilities

+ 129,785

recorded in the last 24 hours

20,524,740 total vaccine doses administered in primary care settings

1,062,282 total vaccine doses administered in aged care and disability settings

NSW	Jurisdictions	Commonwealth
Cumulative	4,147,505	8,437,322
Daily increase	7,679	30,198

VIC	Jurisdictions	Commonwealth
Cumulative	4,597,839	5,526,245
Daily increase	14,790	39,724

QLD	Jurisdictions	Commonwealth
Cumulative	2,598,685	3,773,864
Daily increase	10,651	29,522

WA	Jurisdictions	Commonwealth
Cumulative	1,526,773	1,709,507
Daily increase	13,039	14,801

TAS	Jurisdictions	Commonwealth
Cumulative	421,214	343,343
Daily increase	1,923	2,575

SA	Jurisdictions	Commonwealth
Cumulative	1,071,418	1,207,303
Daily increase	7,274	9,474

ACT	Jurisdictions	Commonwealth
Cumulative	453,290	456,106
Daily increase	1,786	1,528

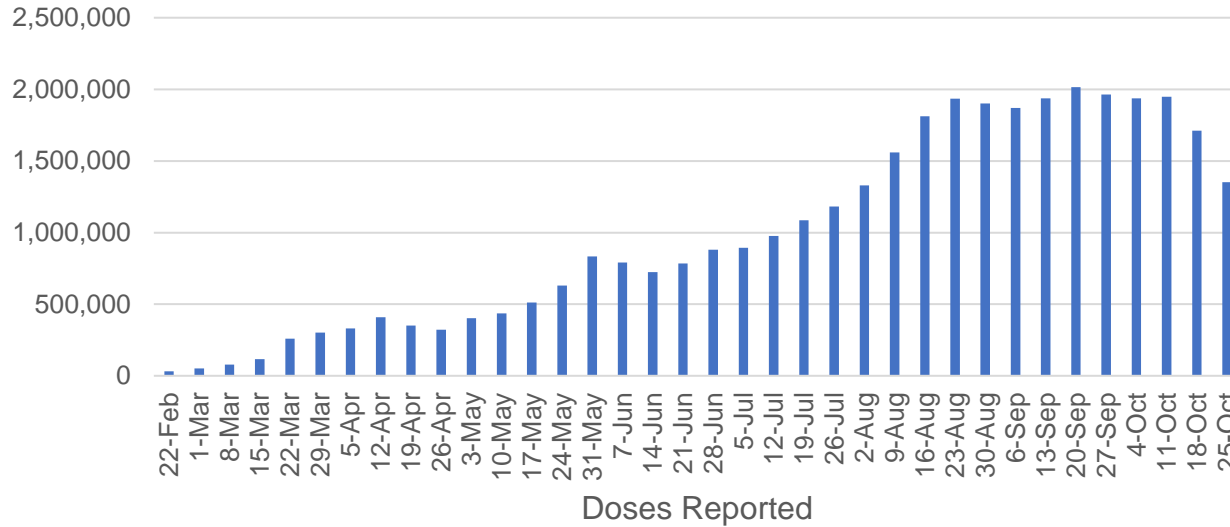
NT	Jurisdictions	Commonwealth
Cumulative	198,781	133,332
Daily increase	2,544	1,963

Vaccine milestone charts

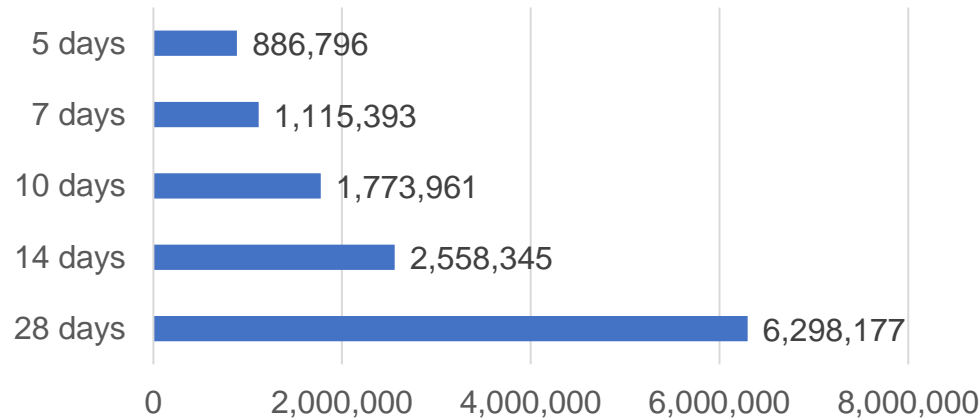
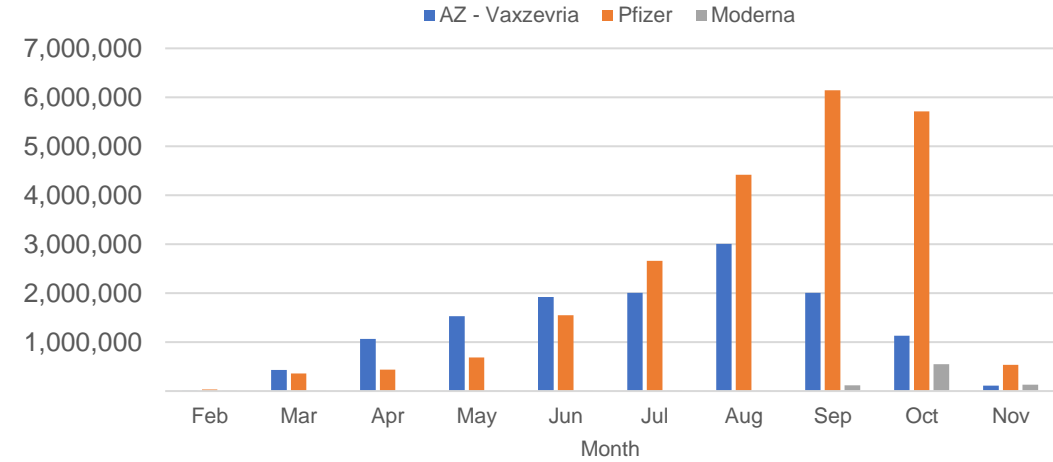
Data as at:
05 Nov 2021

Australia's COVID-19
Vaccine Roadmap

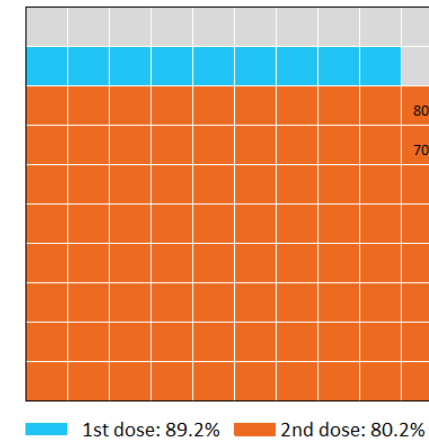
Doses Administered by Week



Doses by administration month and vaccine type



Eligible population percentage coverage



*Each square represents 1% of the national population. Squares are filled as milestones are achieved.

*Sourced from the Australian Immunisation Register.

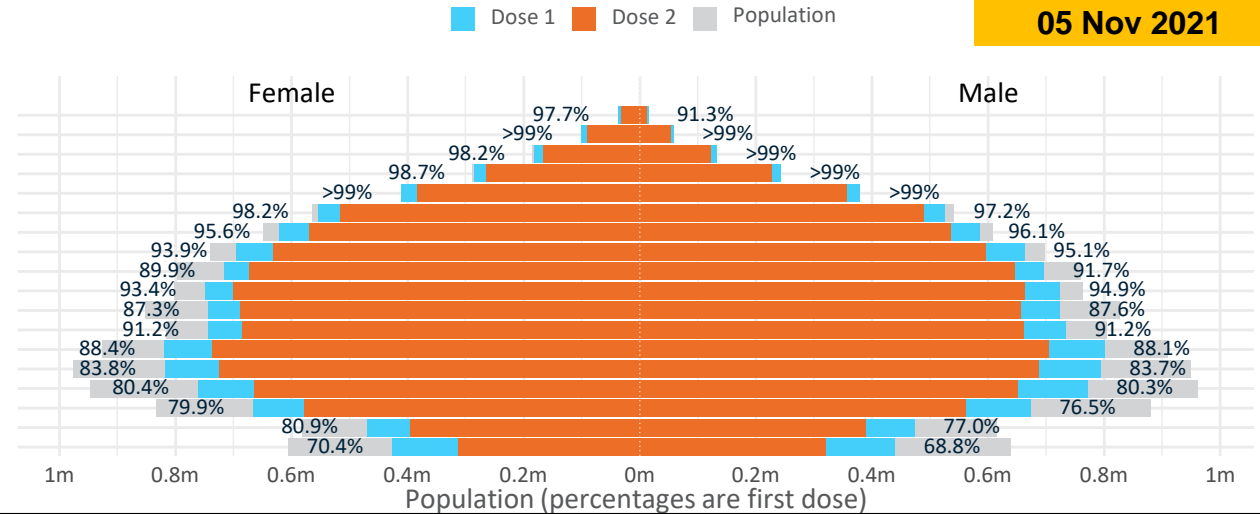
Doses by age and sex

First and second doses by age and sex

**Data as at:
05 Nov 2021**

	16+	50+	70+	12-15
Dose 1	89.22% (18,396,159 doses / 20,619,959 people)	95.73% (8,375,686 doses / 8,749,703 people)	>99% (2,922,905 doses / 2,934,706 people)	69.60% (865,782 doses / 1,243,990 people)
Dose 2	80.16% (16,529,897 doses / 20,619,959 people)	88.30% (7,726,031 doses / 8,749,703 people)	92.41% (2,712,047 doses / 2,934,706 people)	50.99% (634,270 doses / 1,243,990 people)

Age	Dose 1	Dose 2
95+	50,792 (96.0%)	44,949 (85.0%)
90-94	157,997 (>99%)	143,087 (90.3%)
85-89	314,947 (>99%)	288,594 (91.3%)
80-84	528,131 (>99%)	490,439 (92.8%)
75-79	790,249 (>99%)	738,898 (95.5%)
70-74	1,080,789 (97.8%)	1,006,080 (91.0%)
65-69	1,207,108 (95.9%)	1,104,303 (87.8%)
60-64	1,359,179 (94.6%)	1,227,516 (85.4%)
55-59	1,412,875 (90.8%)	1,318,926 (84.8%)
50-54	1,473,619 (94.2%)	1,363,239 (87.1%)
45-49	1,467,264 (87.5%)	1,346,207 (80.3%)
40-44	1,479,615 (91.3%)	1,346,331 (83.1%)
35-39	1,623,570 (88.5%)	1,443,651 (78.7%)
30-34	1,619,085 (84.2%)	1,415,832 (73.6%)
25-29	1,542,593 (80.9%)	1,323,532 (69.4%)
20-24	1,344,549 (78.5%)	1,143,598 (66.8%)
16-19	943,797 (78.9%)	784,715 (65.6%)
12-15	865,782 (69.6%)	634,270 (51.0%)



	AUS	ACT	NSW	NT	QLD	SA	TAS	VIC	WA
16 and over - dose 1	18,396,159	342,977	6,164,711	151,359	3,262,991	1,202,012	397,248	4,987,445	1,697,629
16 and over - dose 2	16,529,897	326,047	5,888,459	126,339	2,750,127	1,007,194	342,885	4,542,772	1,399,219
16 and over - population	20,619,959*	344,037	6,565,651	190,571	4,112,707	1,440,400	440,172	5,407,574	2,114,978
16 and over % with dose 1	89.22%	>99%	93.89%	79.42%	79.34%	83.45%	90.25%	92.23%	80.27%
16 and over % with dose 2	80.16%	94.77%	89.69%	66.29%	66.87%	69.92%	77.90%	84.01%	66.16%
50 and over - dose 1	8,375,686	132,963	2,752,321	53,073	1,599,823	621,672	208,013	2,148,124	807,092
50 and over - dose 2	7,726,031	127,767	2,648,629	47,296	1,425,132	545,082	186,637	1,997,416	705,637
50 and over - population	8,749,703	127,802	2,807,793	62,280	1,758,855	674,384	220,036	2,211,211	885,370
50 and over % with dose 1	95.73%	>99%	98.02%	85.22%	90.96%	92.18%	94.54%	97.15%	91.16%
50 and over % with dose 2	88.30%	>99%	94.33%	75.94%	81.03%	80.83%	84.82%	90.33%	79.70%
70 and over - dose 1	2,922,905	43,227	970,007	11,001	558,101	234,490	76,593	738,185	270,523
70 and over - dose 2	2,712,047	41,437	930,794	9,951	508,252	208,022	69,045	686,840	240,300
70 and over - population	2,934,706	39,946	962,606	12,343	577,767	240,514	77,155	743,519	280,281
70 and over % with dose 1	>99%	>99%	>99%	89.13%	96.60%	97.50%	>99%	>99%	96.52%
70 and over % with dose 2	92.41%	>99%	96.70%	80.62%	87.97%	86.49%	89.49%	92.38%	85.74%
12 to 15 - dose 1	865,782	19,468	312,460	7,489	145,203	43,610	16,476	254,363	60,923
12 to 15 - dose 2	634,270	17,424	267,955	4,599	87,459	22,724	7,866	190,891	31,960
12 to 15 - population	1,243,990	19,693	390,330	13,060	270,146	82,747	26,308	308,611	132,869
12 to 15 % with dose 1	69.60%	98.86%	80.05%	57.34%	53.75%	52.70%	62.63%	82.42%	45.85%
12 to 15 % with dose 2	50.99%	88.48%	68.65%	35.21%	32.37%	27.46%	29.90%	61.85%	24.05%

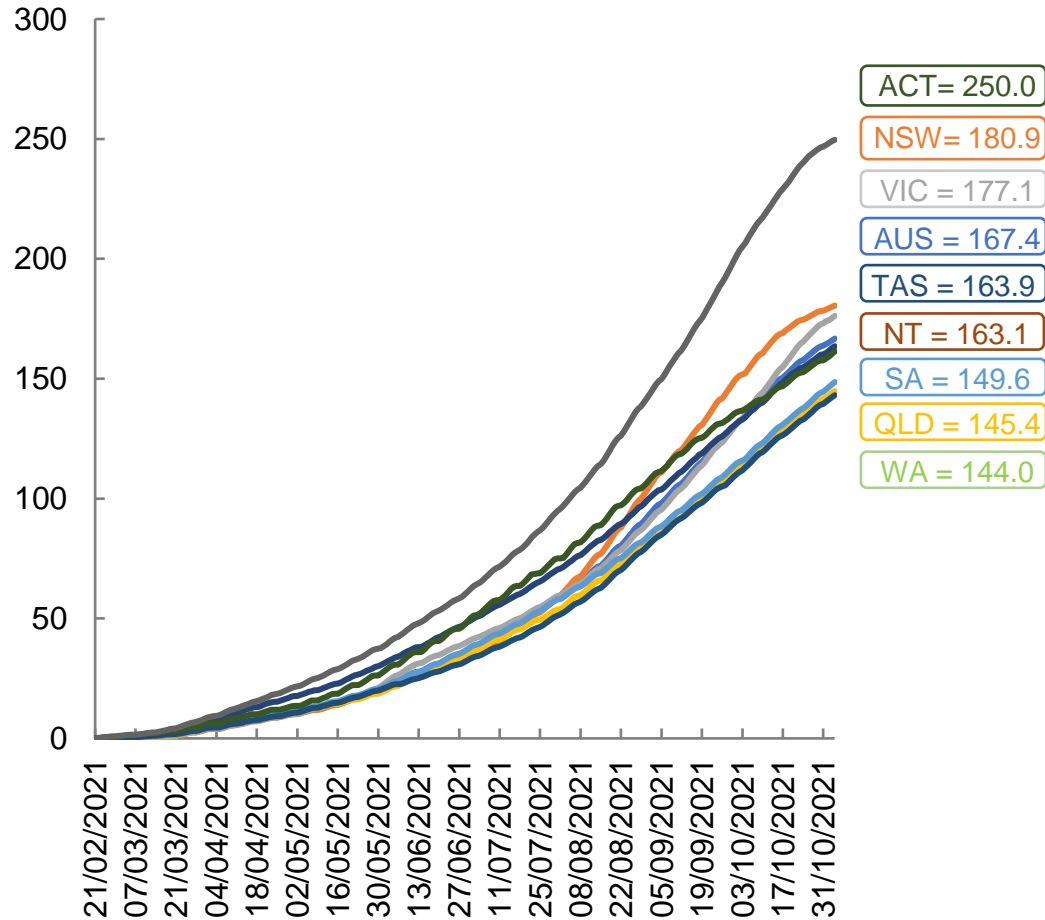
*National population will not equal sum of listed jurisdictions due to a small number of people counted in national population residing in some 'other' territories. Sum of state doses will not add to national total as some records are unable to be geocoded to a State or Territory.
Doses sourced from Australian Immunisation Register, population from ABS ERP June 2020

Vaccinations by location

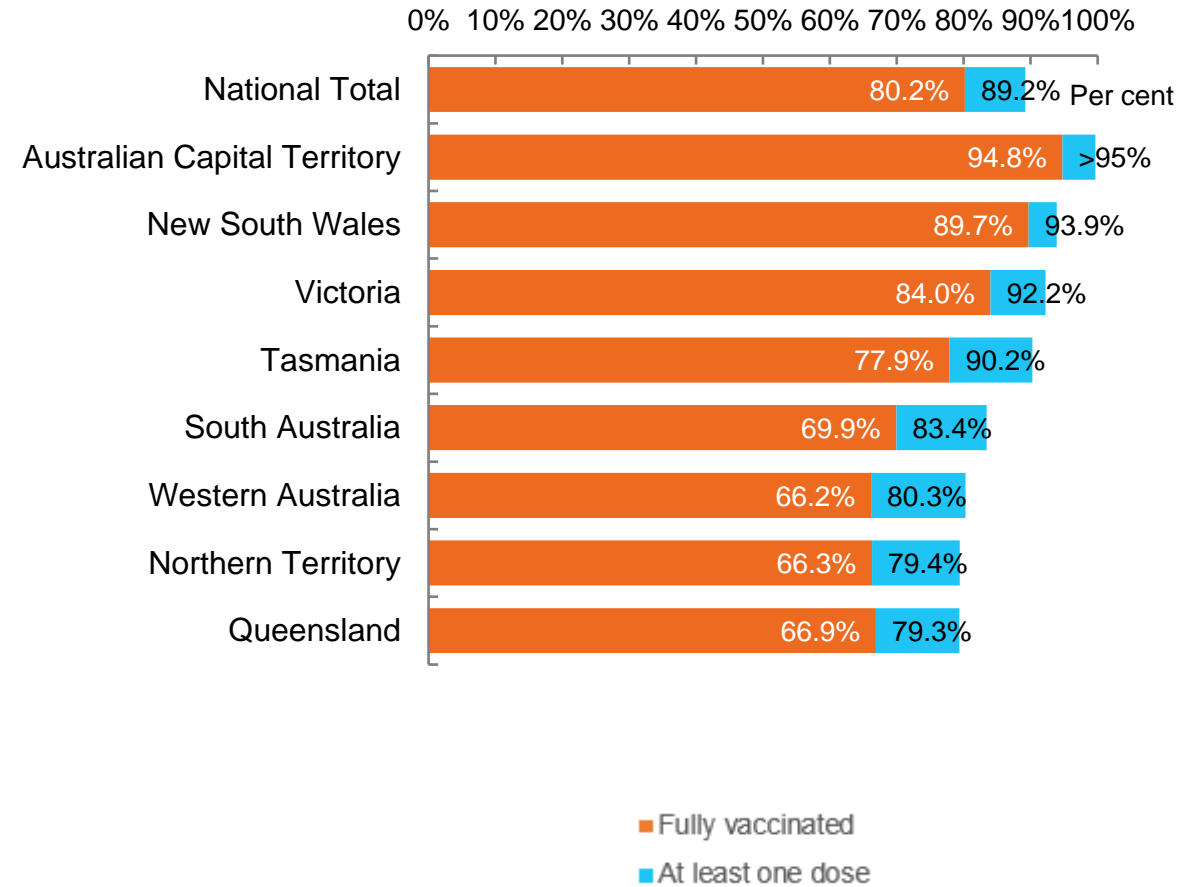
Data as at:
05 Nov 2021

Australia's COVID-19
Vaccine Roadmap

Cumulative total doses administered vs eligible state populations*



First and Second Doses by state of residence



*Not an indication of percentage vaccinated, numbers will exceed 100 due to multiple doses required per person of the population. All doses are included, including those for the 12-15 cohort, and are based on vaccination provider location.

Aboriginal and Torres Strait Islander peoples

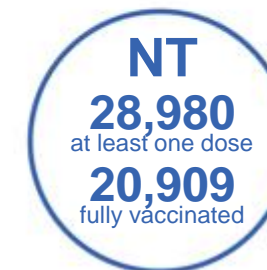
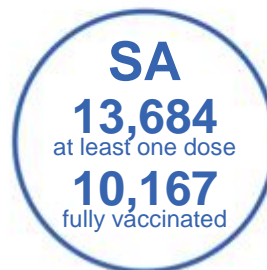
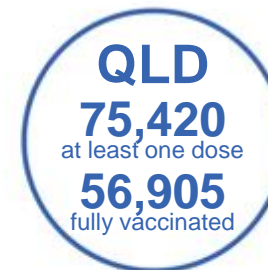
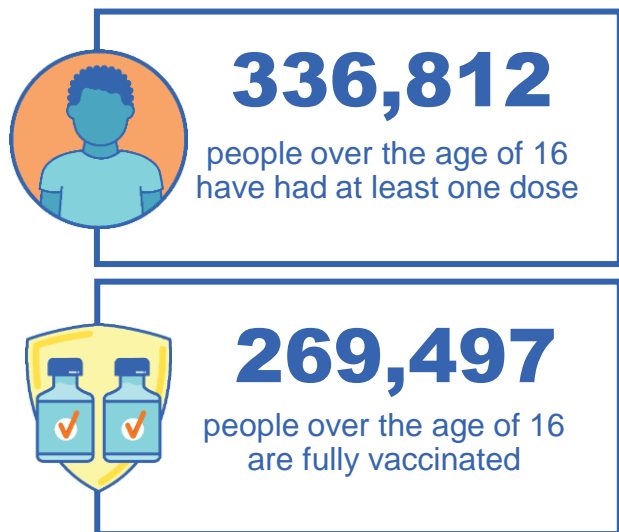
Number of people vaccinated

Data as at:
31 Oct 2021
Updated weekly

Australia's COVID-19
Vaccine Roadmap

169 Aboriginal community controlled health services (ACCHS)

0#	50	26	39	12	3	21	18
ACT	NSW	NT	QLD	SA	TAS	VIC	WA



9,080 people with at least one dose
6,047 people fully vaccinated

residing in other territories or with missing residential information

Source: Australian Immunisation Register

*Identifying as Aboriginal and Torres Strait Islander is optional and the estimated population may be under reported.

**Includes all Aboriginal and Torres Strait Islander peoples who have received a vaccination, not limited to those administered in an ACCHS setting

***Updated weekly.

#ACCHS in the ACT are currently operating as a Commonwealth Vaccine Clinics so not included to avoid double counting

Data as at:
05 Nov 2021

Commonwealth primary care



Primary care vaccine administration sites

5,611	137	170	3,434
GPs	CVCs	ACCHS	Pharmacies



20,524,740 total vaccine doses administered
primary care settings as at 05 November
+ 128,039 recorded in the last 24 hours

Primary care vaccinations by provider type

	Doses administered	Daily increase	7 day increase
General Practice* includes other Commonwealth	18,685,316	91,527	533,114
Pharmacy	1,839,424	36,512	192,603



126,785 doses administered to persons residing in other territories or with missing residential information

*General practice includes Commonwealth Vaccination Clinics, Aboriginal Community Health Centres, Royal Flying Doctor Service and other Commonwealth vaccination facilities

Source: Australian Immunisation Register

Data as at:
05 Nov 2021

Commonwealth aged care and disability doses administered



1,062,282 (+ 1,746 last 24 hours)

Total vaccine doses administered in aged care and disability facilities as at 05 November

Number of doses administered as part of the Commonwealth aged and disability care rollout

NSW
511,999
(+274 daily increase)

VIC
198,234
(+429 daily increase)

QLD
156,297
(+197 daily increase)

WA
72,599
(+223 daily increase)

TAS
16,989
(+92 daily increase)

SA
62,504
(+349 daily increase)

ACT
13,129
(+17 daily increase)

NT
5,821
(+13 daily increase)

24,710

doses administered to persons residing in other territories or with missing residential information

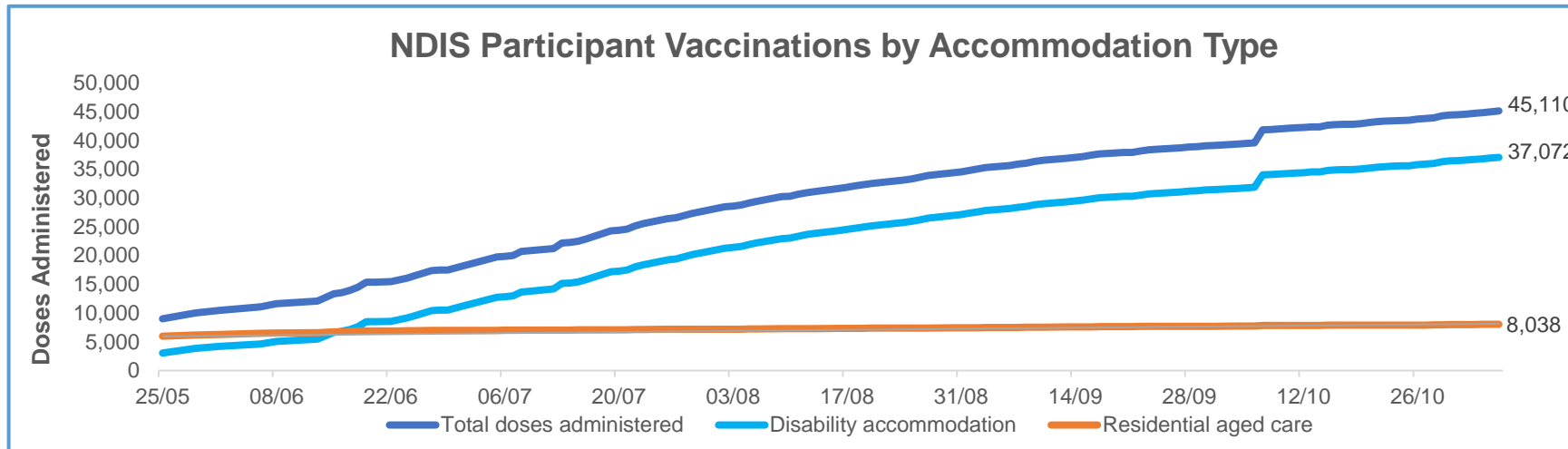
*Sourced from the Australian Immunisation Register. Includes all persons vaccinated at participating residential aged care, disability and related industry settings.
**State level breakdown indicates the residential location and may not align to the state in which the vaccination occurred.

Source: Australian Immunisation Register

Data as at:
05 Nov 2021*

Vaccination rate of people with disability and the disability workforce

Phase 1a – People with disability living in shared accommodation



	Total people with at least one dose	People fully vaccinated	Total number of individuals in cohort	Total doses administered	% People with at least one dose	% People fully vaccinated
NDIS participants living in shared accommodation **	23,264	21,846	27,603	45,110	84.3%	79.1%
NDIS screened workers ***	192,051	177,052	228,985	369,103	83.9%	77.3%

* Updates are available Monday to Friday on participants, and bi-weekly for workers, numbers may be up to four days old.

** Shared accommodation means two or more people with disability living in shared residential accommodation and NDIS participants living in Residential Aged Care accommodation as per the eligibility criteria of Phase 1a.

*** Total number of workers within the NDIS Commission Worker Screening database who have ever been successfully screened and linked to an NDIS registered provider or participant.

Source: Linkage between National Disability Insurance Agency data, NDIS Quality and Safeguards Commission data and the Australian Immunisation Register.

Residential aged care vaccination rollout

Residential aged care facilities status

100%

Commonwealth facilities visited (2,573 planned sites)

162,232

People fully vaccinated

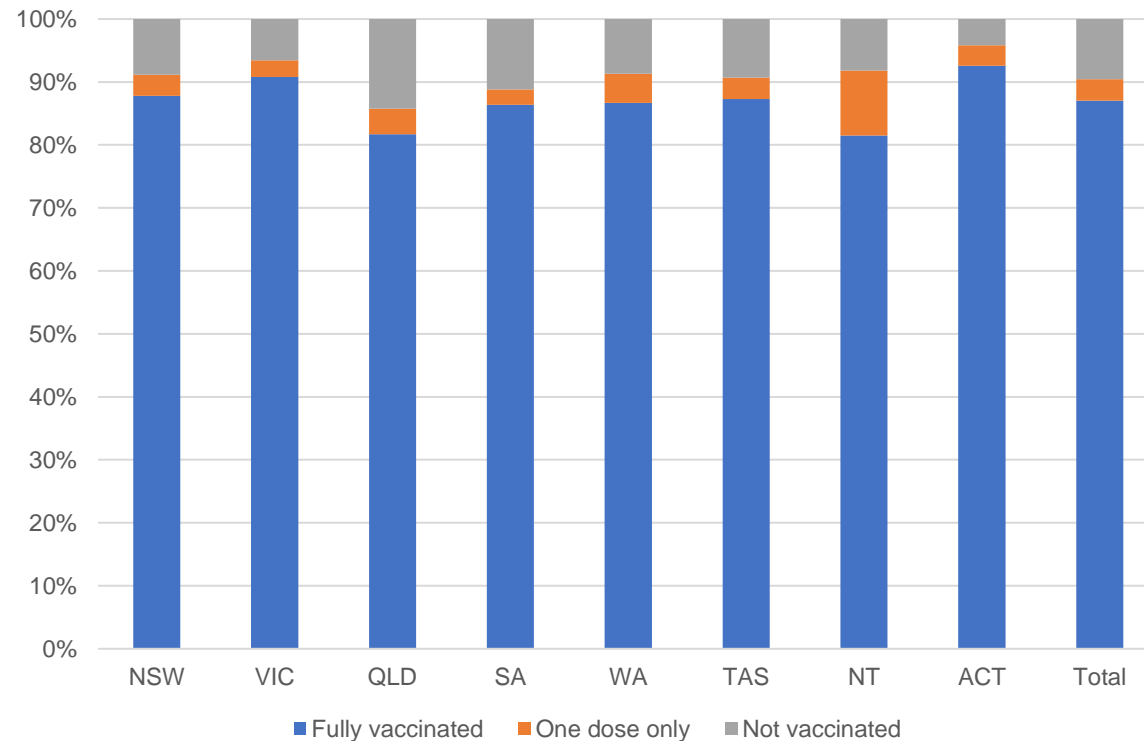
168,565

People with at least one dose

Australia's COVID-19 Vaccine Roadmap

Data as at:
5 Nov 2021

Aged care resident vaccinations



Aged care worker vaccinations

Jurisdictions	Total workers with at least one dose	Workers fully vaccinated	% Workers with at least one dose	% Workers fully vaccinated
NSW	78,295	77,225	99.6%	98.3%
VIC	71,359	67,856	97.5%	92.7%
QLD	48,188	46,788	99.5%	96.6%
SA	27,424	25,998	100.0%	94.8%
WA	23,769	21,644	99.8%	90.9%
TAS	7,648	7,214	100.0%	94.3%
NT	823	818	99.5%	98.9%
ACT	2,978	2,897	99.8%	97.1%
Total	260,484	250,440	99.1%	95.3%

Source: My Aged Care Portal staff vaccination progress

**Resident vaccination information is reported manually by service providers

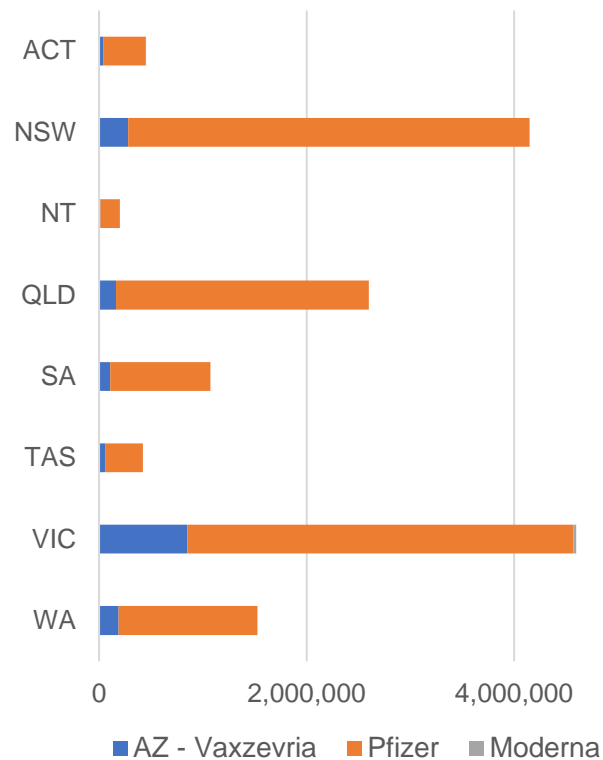
*Status updates are provided by facilities at least once per week. Reporting is updated Monday to Friday to encompass different facility updates being made on different days.

Data is sourced directly from Aged Care Service Providers and is not drawn or closely aligned with data from AIR due to inconsistencies and potential lags in uploading of records.

Data as at:
05 Nov 2021

Jurisdiction administered

Total vaccine doses administered in State and Territory clinics as at 05 November



15,015,505 total vaccine doses administered in State and Territory clinics as at 05 November
 + **59,686** recorded in the last 24 hours
 + **378,800** recorded in the last 7 days

NSW
4,147,505
 (+7,679 daily increase)

VIC
4,597,839
 (+14,790 daily increase)

QLD
2,598,685
 (+10,651 daily increase)

WA
1,526,773
 (+13,039 daily increase)

TAS
421,214
 (+1,923 daily increase)

SA
1,071,418
 (+7,274 daily increase)

ACT
453,290
 (+1,786 daily increase)

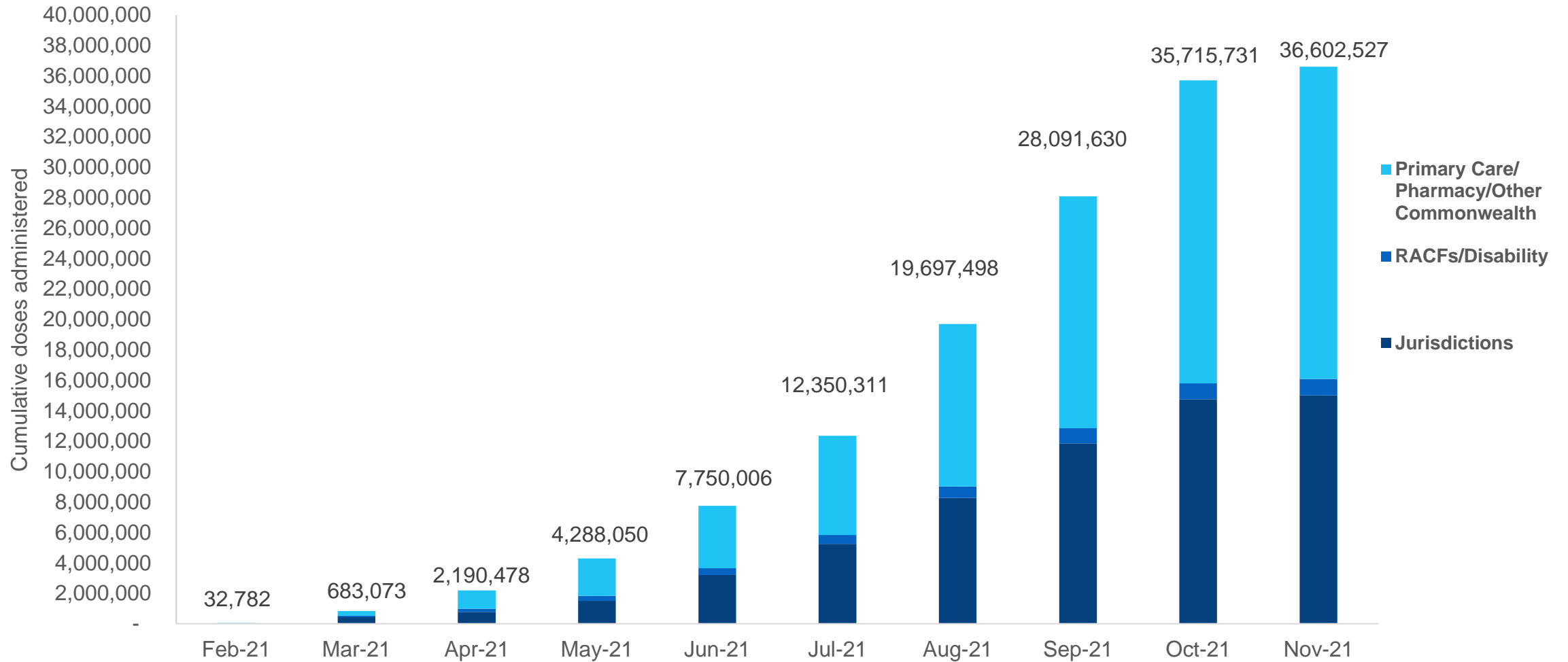
NT
198,781
 (+2,544 daily increase)

*Sourced from the Australian Immunisation Register and self-reported data. Numbers are calculated as difference in daily cumulative reported numbers to allow for historical corrections in all self-reported data sources.

Source: Australian Immunisation Register

Data as at:
05 Nov 2021

Cumulative doses administered by channel



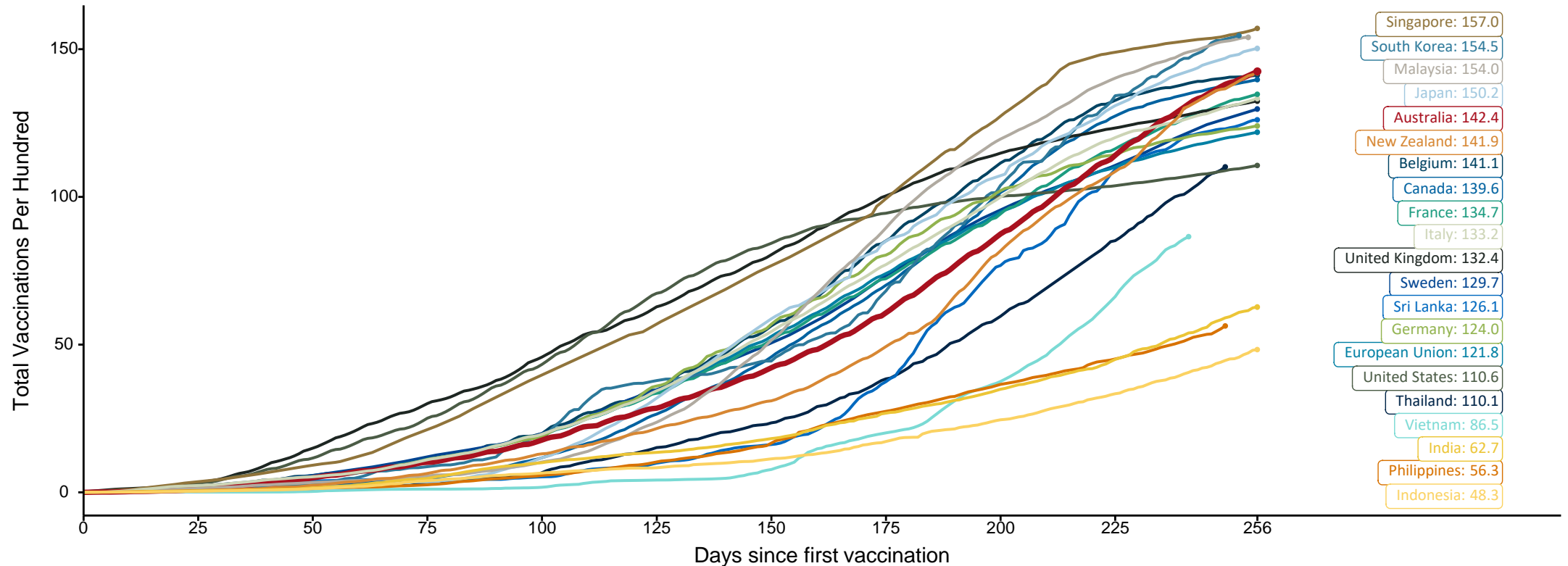
Source: Australian Immunisation Register

Doses at equivalent stages of rollout (Day 256)

Data as at:
05 Nov 2021

The x-axis is truncated at the length of Australia's vaccination program. Countries with intermittent reporting have had their doses per 100 imputed to Australia's current stage of rollout. Israel excluded as it is beyond scale of the graph

Cumulative doses administered (05 Nov): **36,602,527**

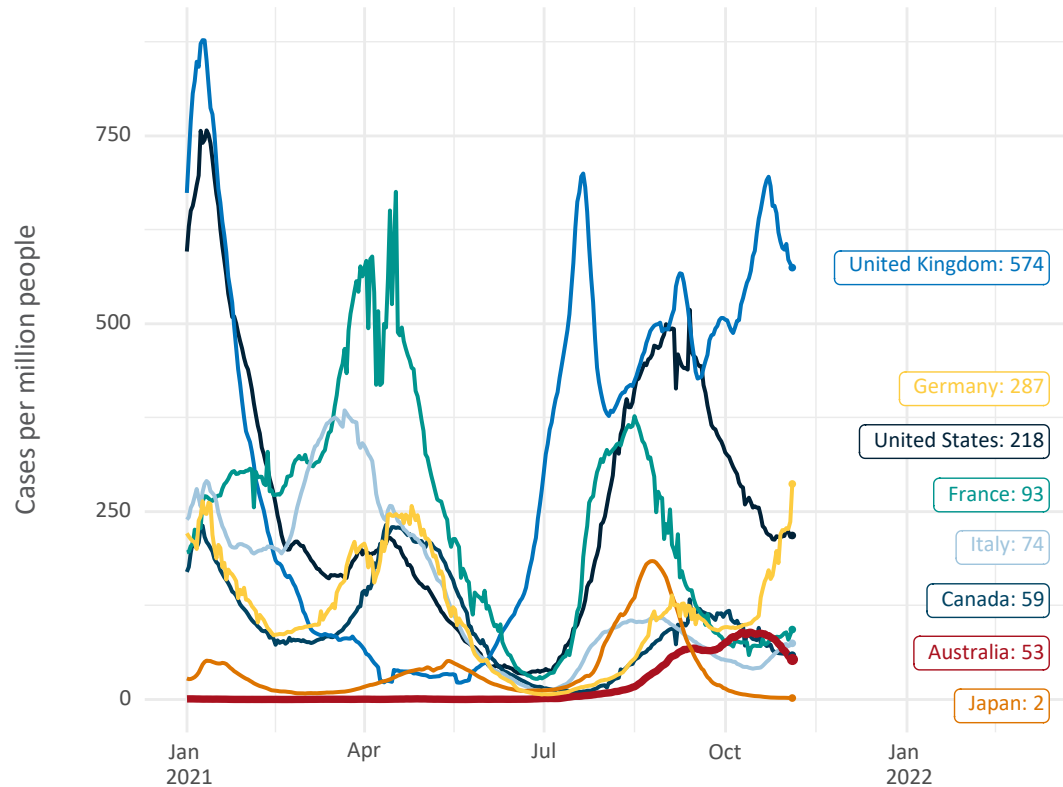


Note: From 15 September 2021, data for Australia includes all doses administered to people 12 and over. Prior to 15 September, data was for 16 and over
 Source: Department of Health (Australia), Our World in Data (international)
 Latest data: 05 November

Data as at:
05 Nov 2021

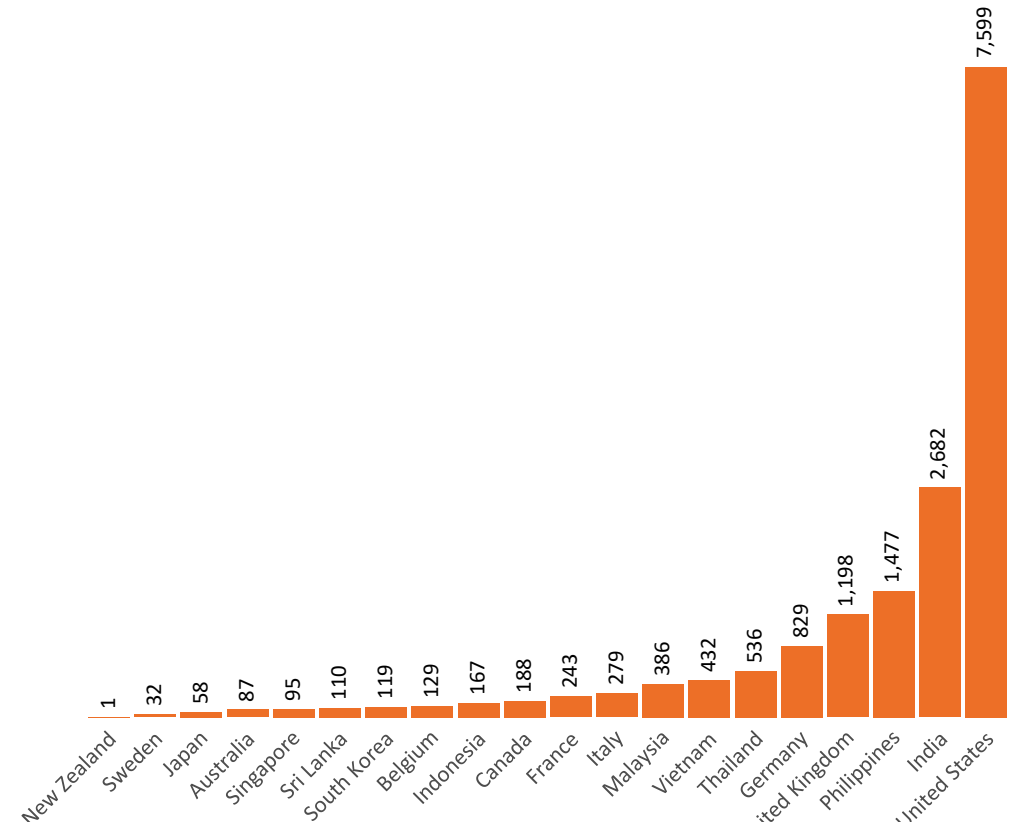
International data – COVID-19

New daily cases per million in 2021, Australia and G7 countries
Smoothed - 7 day average



Source: OWID
Data downloaded: 06 Nov 2021 08:11
Latest data: 04 Nov 2021


COVID-19 deaths in past 7 days - Australia and select countries



Source: OWID
Data downloaded: 06 Nov 2021 08:11
Latest data: 04 Nov 2021

Pandemic Response Payments (Current)

Data as at midnight:
5 Nov 2021



2.37 million
People have received at least one COVID Disaster Payment (including ISP200)

\$12.83 billion
Paid Out as at 5 Nov 2021


5.67 million
Claims granted across three different payments



94%
of Claims Received Digitally



COVID Disaster Payment:	5.50 million claims received - 2.18 million individuals paid a total of \$12.39 billion.
\$200 Income Support Payment:	332,000 claims received - 182,000 individuals paid a total of \$265.59 million.
Pandemic Leave Disaster Payment:	121,000 claims received - 103,000 individuals paid a total of \$168.76 million.



THREE PAYMENTS AVAILABLE

COVID Disaster Payment
assisting during a lockdown event in a Commonwealth hotspot.

Income Support Payment \$200
for income support recipients who lost at least 8 hours of work.

Pandemic Leave Disaster Payment
for those who have to self-isolate, quarantine or care.

For more information visit:
servicesaustralia.gov.au

CURRENT COVID-19 DISASTER PAYMENTS

New South Wales
Active lockdown since 24 Jun
Partial reopening from 10 Oct

1.08m people have received at least one COVID Disaster Payment.

\$7.46b paid out as at 5 Nov 2021.

\$98m paid in initial and reoccurring payments in the week ending 31 Oct 2021.

Cumulative payments made by State since activation on 1 Jul 2021.

Date	Cumulative Payments
10 Oct	\$6.91b
17 Oct	\$7.15b
24 Oct	\$7.32b
31 Oct	\$7.42b
5 Nov	\$7.46b

Victoria
Active lockdown (#6) since 6 Aug
Partial reopening from 28 Oct

740,000 people have received at least one COVID Disaster Payment.

\$4.28b paid out as at 5 Nov 2021.

\$111m paid in initial and reoccurring payments in the week ending 31 Oct 2021.

Cumulative payments made by State since activation on 8 Jun 2021.

Date	Cumulative Payments
10 Oct	\$3.25b
17 Oct	\$3.68b
24 Oct	\$4.07b
31 Oct	\$4.19b
5 Nov	\$4.28b

Australian Capital Territory
Active lockdown since 12 Aug
Partial reopening from 14 Oct

65,000 people have received at least one COVID Disaster Payment.

\$342.6m paid out as at 5 Nov 2021.

\$9.2m paid in initial and reoccurring payments in the week ending 31 Oct 2021.

Cumulative payments made by State since activation on 20 Aug 2021.

Date	Cumulative Payments
10 Oct	\$297.4m
17 Oct	\$311.9m
24 Oct	\$329.3m
31 Oct	\$338.6m
5 Nov	\$342.6m

Tasmania
Lockdown from 15 Oct to 18 Oct
Claiming period ends 12 Nov

5,600 people have received at least one COVID Disaster Payment.

\$2.9m paid out as at 5 Nov 2021.

\$1.7m paid in initial payments in the week ending 31 Oct 2021.

Cumulative payments made by State since activation on 22 Oct 2021.

Date	Cumulative Payments
24 Oct	\$390,000
31 Oct	\$2.1m
5 Nov	\$2.9m