



Australian Government
Operation COVID Shield

COVID-19 Vaccine Rollout

05 November 2021

Data as at:
04 Nov 2021

Total vaccine doses



36,413,056 total vaccine doses administered nationally as at 04 November
+181,833 recorded in the last 24 hours



18,358,666

people have had at least one dose

89.0%

of people over the age of 16 have had at least one dose



16,414,885

people are fully vaccinated

79.6%

of people over the age of 16 are fully vaccinated

NSW
12,546,950
(+36,441 daily increase)

VIC
10,069,570
(+57,042 daily increase)

QLD
6,332,376
(+38,664 daily increase)

WA
3,208,440
(+23,279 daily increase)

TAS
760,059
(+3,977 daily increase)

SA
2,261,973
(+16,611 daily increase)

ACT
906,082
(+3,627 daily increase)

NT
327,606
(+2,192 daily increase)

*Administration state breakdown indicates state in which a vaccine was administered

**Overall dose count includes instances of more than two doses per person in a small number of cases.

Data as at:
04 Nov 2021

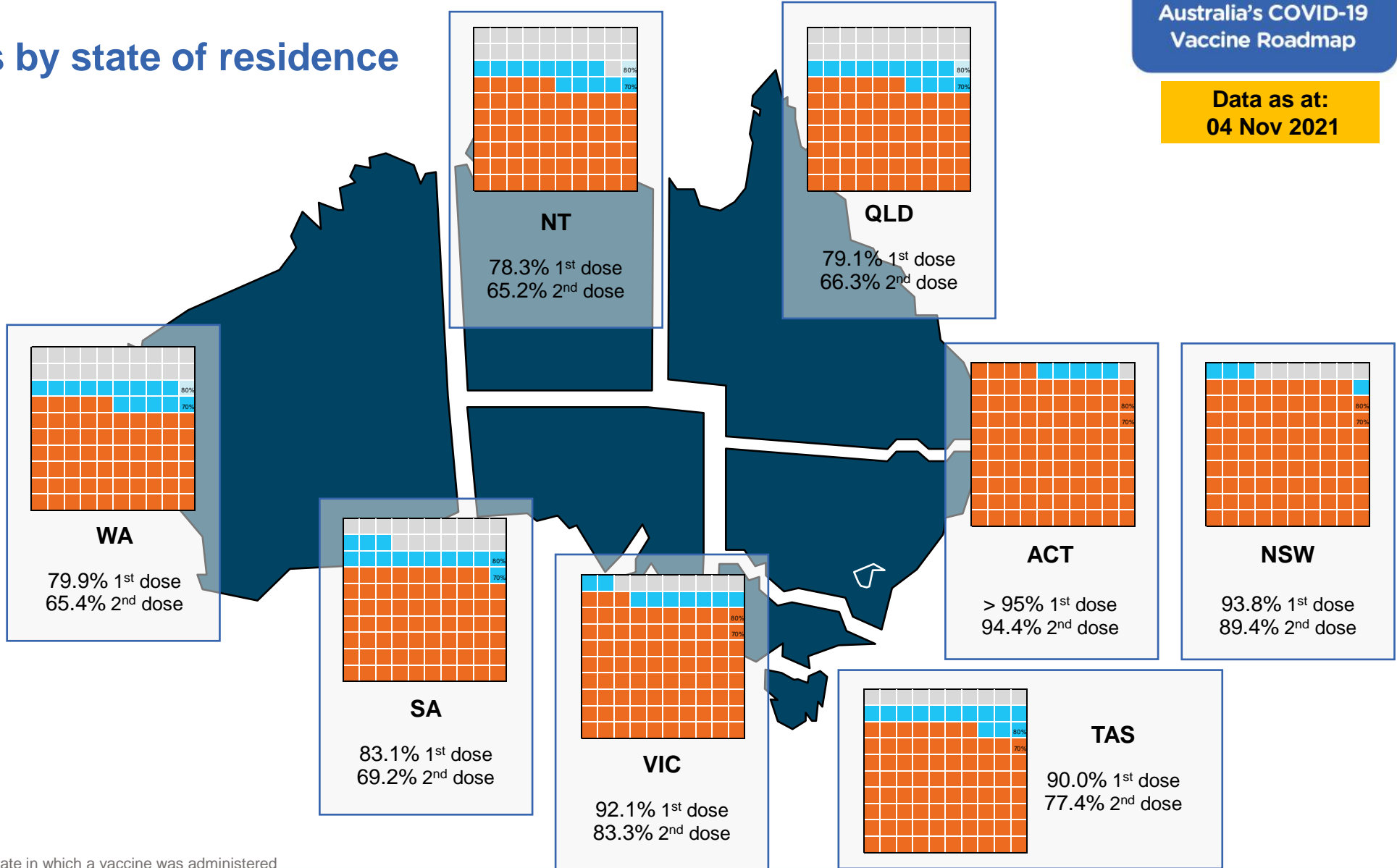
Vaccinations by state of residence

First doses

Age	Today	4 weeks ago	8 weeks ago
16+	89.0%	82.1%	67.1%
50+	>95%	91.7%	84.1%
70+	>95%	>95%	91.9%

Fully vaccinated

Age	Today	4 weeks ago	8 weeks ago
16+	79.6%	61.1%	42.0%
50+	87.9%	76.1%	61.6%
70+	92.0%	82.7%	71.4%



*Residential state may differ from the state in which a vaccine was administered

Commonwealth and Jurisdiction vaccine doses administered

Data as at:
04 Nov 2021



36,413,056 total vaccine doses administered nationally as at 04 November

+ **181,833** recorded in the last 24 hours



14,955,819

doses administered by state and territory facilities

+ **53,846**

recorded in the last 24 hours

NSW	Jurisdictions	Commonwealth
Cumulative	4,139,826	8,407,124
Daily increase	7,280	29,161

TAS	Jurisdictions	Commonwealth
Cumulative	419,291	340,768
Daily increase	2,026	1,951

VIC	Jurisdictions	Commonwealth
Cumulative	4,583,049	5,486,521
Daily increase	13,797	43,245

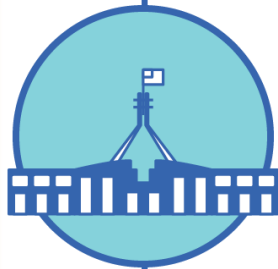
SA	Jurisdictions	Commonwealth
Cumulative	1,064,144	1,197,829
Daily increase	7,583	9,028

QLD	Jurisdictions	Commonwealth
Cumulative	2,588,034	3,744,342
Daily increase	11,096	27,568

ACT	Jurisdictions	Commonwealth
Cumulative	451,504	454,578
Daily increase	2,193	1,434

WA	Jurisdictions	Commonwealth
Cumulative	1,513,734	1,694,706
Daily increase	8,644	14,635

NT	Jurisdictions	Commonwealth
Cumulative	196,237	131,369
Daily increase	1,227	965



21,457,237

doses administered by commonwealth facilities

+ **127,987**

recorded in the last 24 hours

20,396,701 total vaccine doses administered in primary care settings

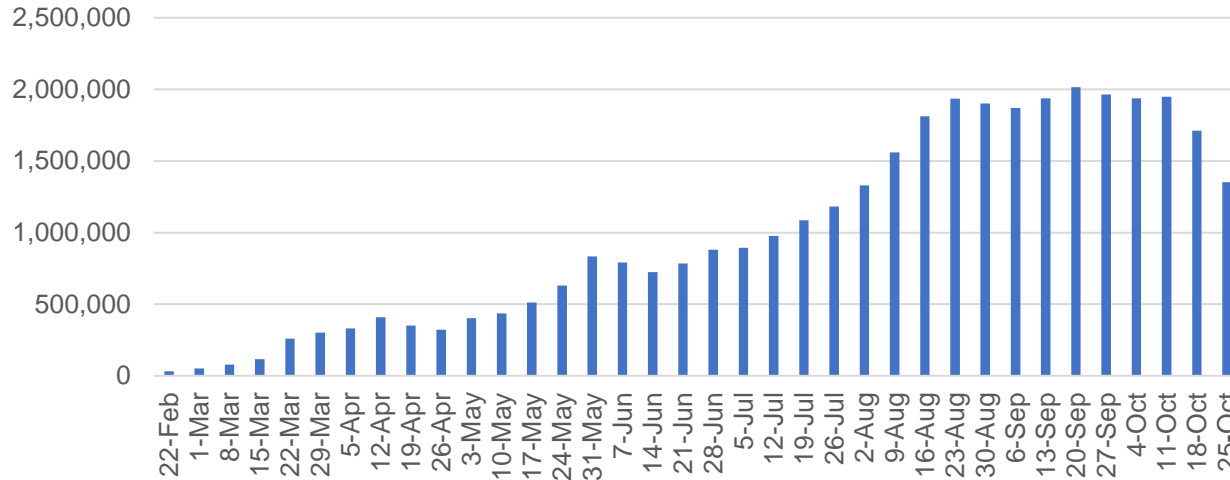
1,060,536 total vaccine doses administered in aged care and disability settings

Vaccine milestone charts

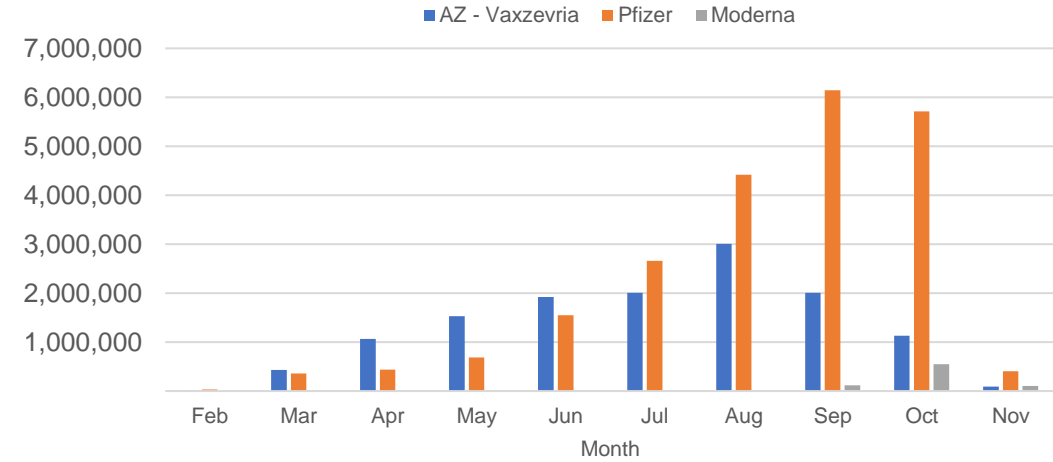
Data as at:
04 Nov 2021

Australia's COVID-19
Vaccine Roadmap

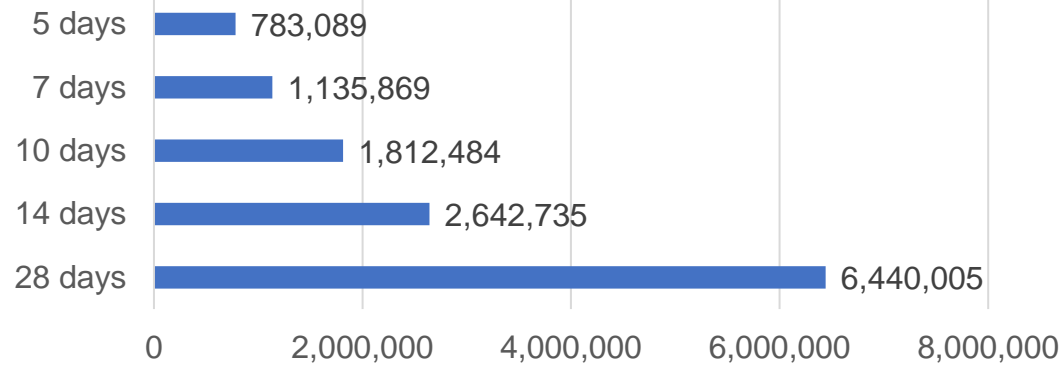
Doses Administered by Week



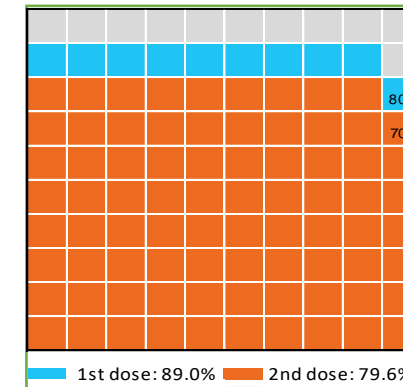
Doses by administration month and vaccine type



Doses Reported



Eligible population percentage coverage



*Sourced from the Australian Immunisation Register.

*Each square represents 1% of the national population. Squares are filled as milestones are achieved.

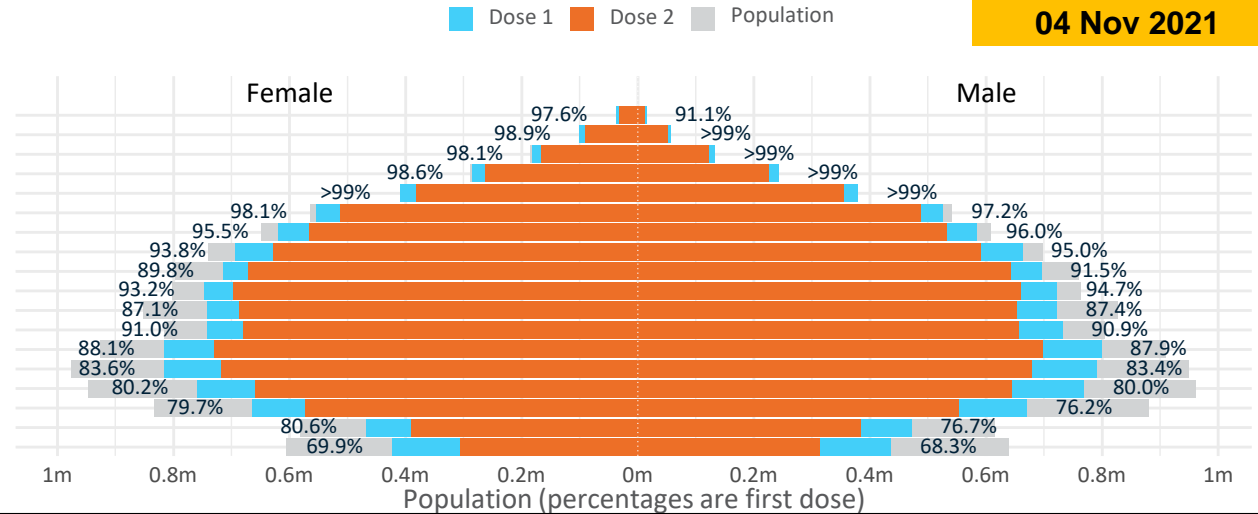
Doses by age and sex

First and second doses by age and sex

Data as at:
04 Nov 2021

	16+	50+	70+	12-15
Dose 1	89.03% (18,358,666 doses / 20,619,959 people)	95.62% (8,366,300 doses / 8,749,703 people)	>99% (2,920,220 doses / 2,934,706 people)	69.14% (860,067 doses / 1,243,990 people)
Dose 2	79.61% (16,414,885 doses / 20,619,959 people)	87.87% (7,688,246 doses / 8,749,703 people)	92.04% (2,701,130 doses / 2,934,706 people)	49.70% (618,204 doses / 1,243,990 people)

Age	Dose 1	Dose 2
95+	50,702 (95.8%)	44,744 (84.6%)
90-94	157,779 (>99%)	142,541 (90.0%)
85-89	314,586 (>99%)	287,402 (90.9%)
80-84	527,580 (>99%)	488,503 (92.4%)
75-79	789,519 (>99%)	735,966 (95.1%)
70-74	1,080,054 (97.7%)	1,001,974 (90.7%)
65-69	1,205,970 (95.9%)	1,098,212 (87.3%)
60-64	1,357,677 (94.5%)	1,219,701 (84.9%)
55-59	1,411,164 (90.7%)	1,312,987 (84.4%)
50-54	1,471,269 (94.0%)	1,356,216 (86.7%)
45-49	1,464,930 (87.4%)	1,338,720 (79.8%)
40-44	1,476,292 (91.1%)	1,337,951 (82.6%)
35-39	1,619,321 (88.2%)	1,431,542 (78.0%)
30-34	1,614,237 (83.9%)	1,402,743 (72.9%)
25-29	1,537,454 (80.6%)	1,309,749 (68.7%)
20-24	1,340,014 (78.3%)	1,131,298 (66.1%)
16-19	940,118 (78.6%)	774,636 (64.8%)
12-15	860,067 (69.1%)	618,204 (49.7%)



	AUS	ACT	NSW	NT	QLD	SA	TAS	VIC	WA
16 and over - dose 1	18,358,666	342,797	6,160,757	149,141	3,252,036	1,197,498	396,222	4,982,564	1,689,365
16 and over - dose 2	16,414,885	324,810	5,867,277	124,230	2,727,891	997,422	340,481	4,504,525	1,384,027
16 and over - population	20,619,959*	344,037	6,565,651	190,571	4,112,707	1,440,400	440,172	5,407,574	2,114,978
16 and over % with dose 1	89.03%	>99%	93.83%	78.26%	79.07%	83.14%	90.02%	92.14%	79.88%
16 and over % with dose 2	79.61%	94.41%	89.36%	65.19%	66.33%	69.25%	77.35%	83.30%	65.44%
50 and over - dose 1	8,366,300	132,908	2,751,124	52,712	1,597,238	620,561	207,740	2,146,520	805,452
50 and over - dose 2	7,688,246	127,386	2,641,115	46,811	1,417,142	541,569	185,830	1,985,856	700,876
50 and over - population	8,749,703	127,802	2,807,793	62,280	1,758,855	674,384	220,036	2,211,211	885,370
50 and over % with dose 1	95.62%	>99%	97.98%	84.64%	90.81%	92.02%	94.41%	97.07%	90.97%
50 and over % with dose 2	87.87%	>99%	94.06%	75.16%	80.57%	80.31%	84.45%	89.81%	79.16%
70 and over - dose 1	2,920,220	43,208	969,475	10,964	557,537	234,206	76,509	737,476	270,198
70 and over - dose 2	2,701,130	41,323	928,365	9,891	506,146	206,956	68,757	683,327	239,130
70 and over - population	2,934,706	39,946	962,606	12,343	577,767	240,514	77,155	743,519	280,281
70 and over % with dose 1	>99%	>99%	>99%	88.83%	96.50%	97.38%	>99%	>99%	96.40%
70 and over % with dose 2	92.04%	>99%	96.44%	80.13%	87.60%	86.05%	89.12%	91.90%	85.32%
12 to 15 - dose 1	860,067	19,449	311,768	7,298	143,639	42,886	16,226	253,516	59,606
12 to 15 - dose 2	618,204	17,215	263,197	4,441	85,155	21,680	7,485	185,262	30,539
12 to 15 - population	1,243,990	19,693	390,330	13,060	270,146	82,747	26,308	308,611	132,869
12 to 15 % with dose 1	69.14%	98.76%	79.87%	55.88%	53.17%	51.83%	61.68%	82.15%	44.86%
12 to 15 % with dose 2	49.70%	87.42%	67.43%	34.00%	31.52%	26.20%	28.45%	60.03%	22.98%

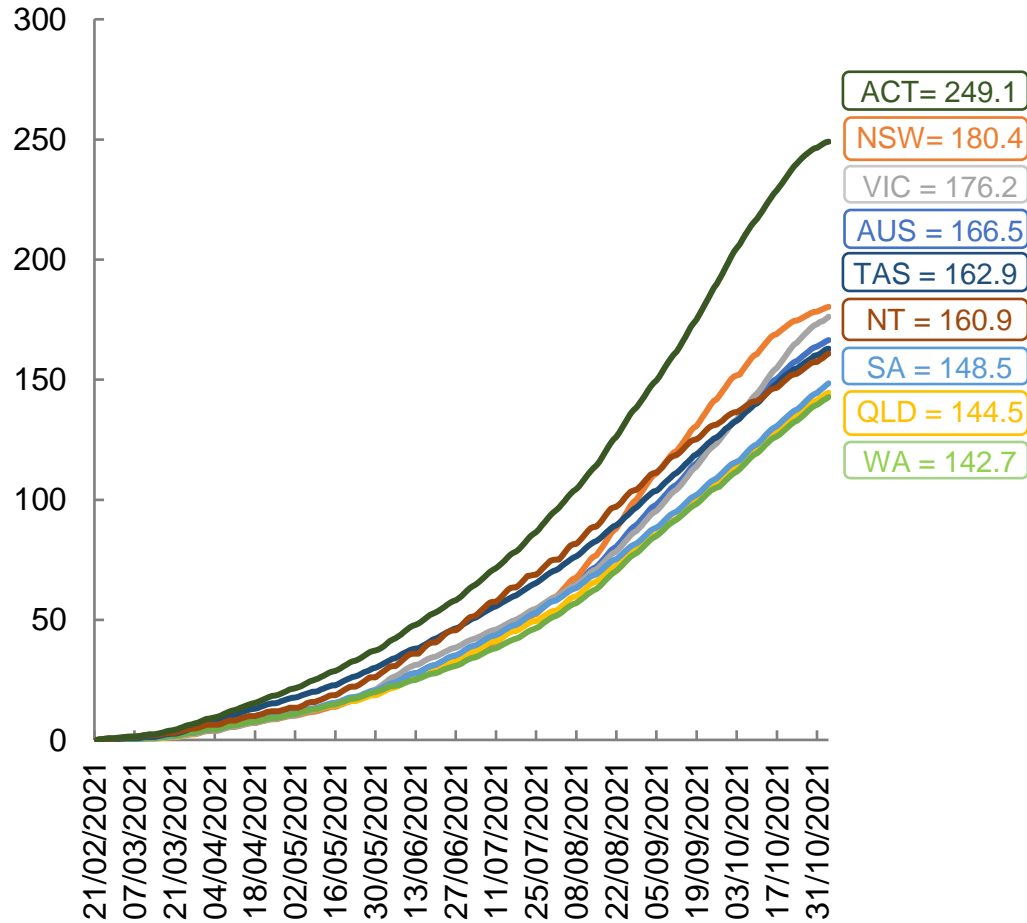
*National population will not equal sum of listed jurisdictions due to a small number of people counted in national population residing in some 'other' territories. Sum of state doses will not add to national total as some records are unable to be geocoded to a State or Territory.
Doses sourced from Australian Immunisation Register, population from ABS ERP June 2020

Vaccinations by location

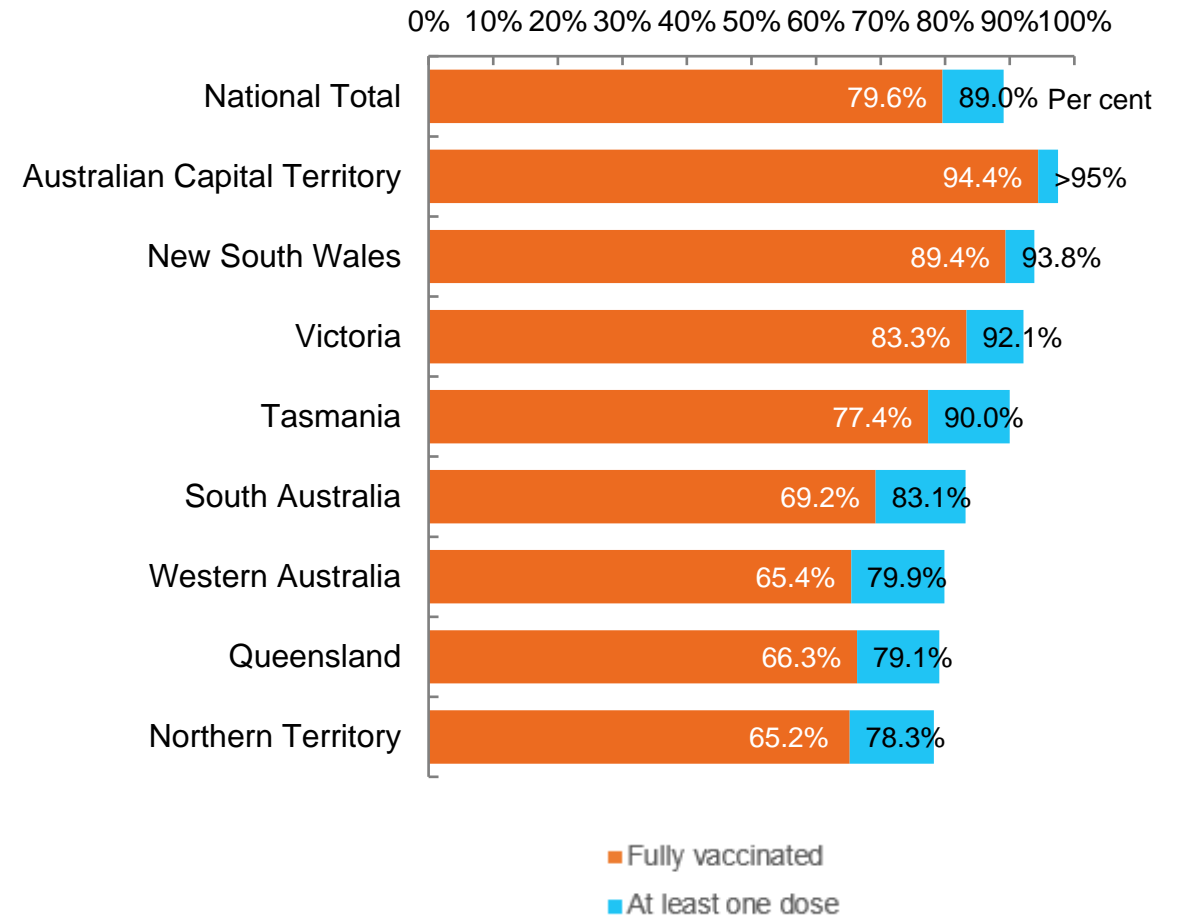
Data as at:
04 Nov 2021

Australia's COVID-19
Vaccine Roadmap

Cumulative total doses administered vs eligible state populations*



First and Second Doses by state of residence



*Not an indication of percentage vaccinated, numbers will exceed 100 due to multiple doses required per person of the population. All doses are included, including those for the 12-15 cohort, and are based on vaccination provider location.

Aboriginal and Torres Strait Islander peoples

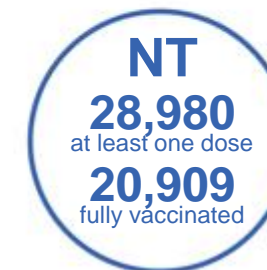
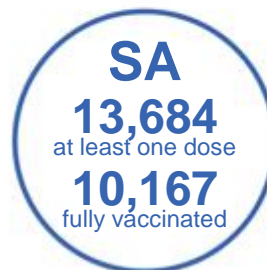
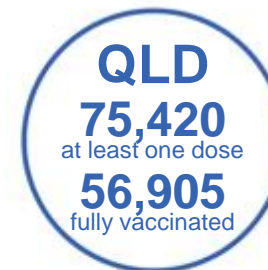
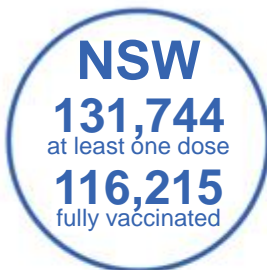
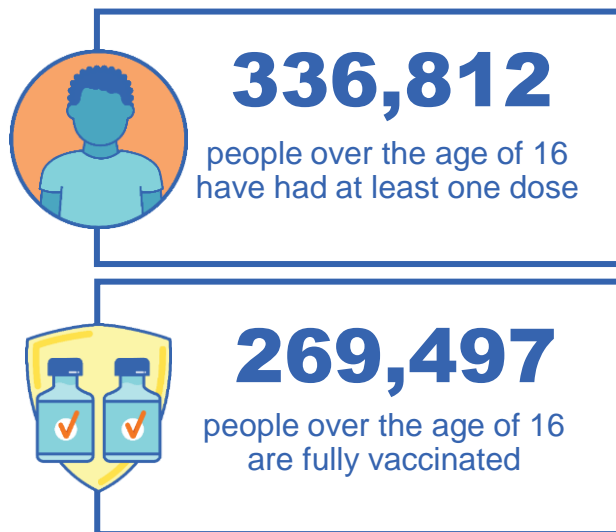
Number of people vaccinated

Data as at:
31 Oct 2021
Updated weekly

Australia's COVID-19
Vaccine Roadmap

169 Aboriginal community controlled health services (ACCHS)

0#	50	26	39	12	3	21	18
ACT	NSW	NT	QLD	SA	TAS	VIC	WA



9,080 people with at least one dose
6,047 people fully vaccinated

residing in other territories or with missing residential information

Source: Australian Immunisation Register

*Identifying as Aboriginal and Torres Strait Islander is optional and the estimated population may be under reported.

**Includes all Aboriginal and Torres Strait Islander peoples who have received a vaccination, not limited to those administered in an ACCHS setting

***Updated weekly.

#ACCHS in the ACT are currently operating as a Commonwealth Vaccine Clinics so not included to avoid double counting

Data as at:
04 Nov 2021

Commonwealth primary care



Primary care vaccine administration sites

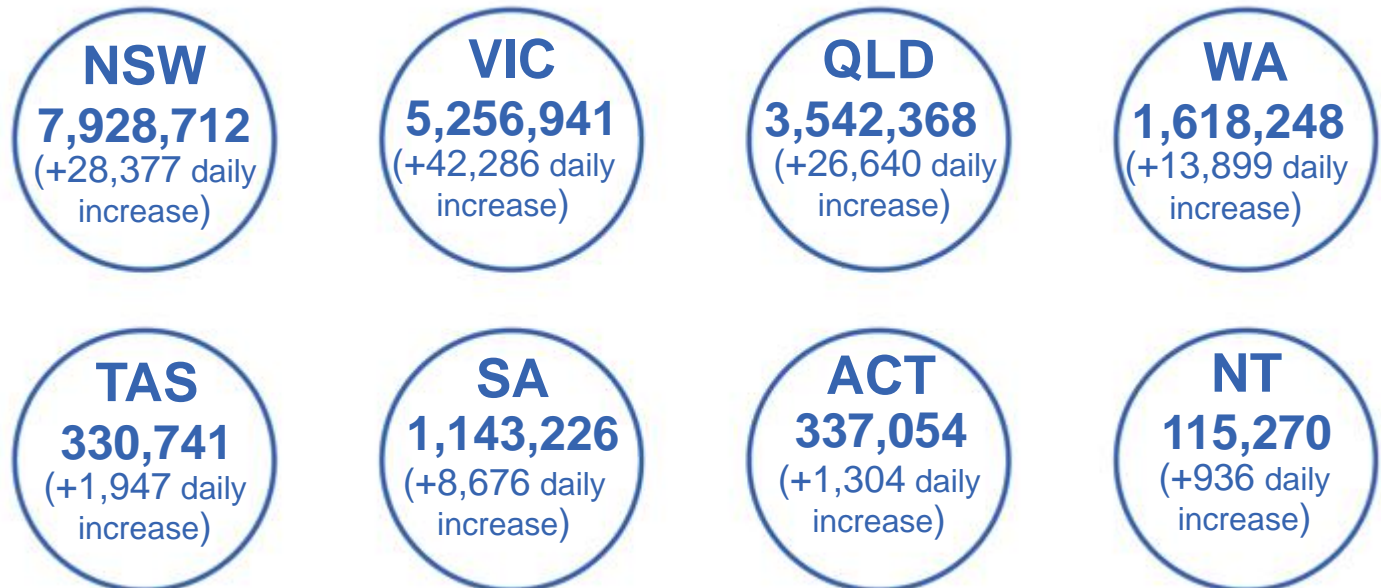
5,604	137	169	3,416
GPs	CVCs	ACCHS	Pharmacies



20,396,701 total vaccine doses administered
primary care settings as at 04 November
+ 126,618 recorded in the last 24 hours

Primary care vaccinations by provider type

	Doses administered	Daily increase	7 day increase
General Practice* includes other Commonwealth	18,593,789	91,023	546,044
Pharmacy	1,802,912	35,595	196,919



124,141 doses administered to persons residing in other territories or with missing residential information

*General practice includes Commonwealth Vaccination Clinics, Aboriginal Community Health Centres, Royal Flying Doctor Service and other Commonwealth vaccination facilities

Source: Australian Immunisation Register

Data as at:
04 Nov 2021

Commonwealth aged care and disability doses administered



1,060,536 (+ 1,369 last 24 hours)

Total vaccine doses administered in aged care and disability facilities as at 04 November

Number of doses administered as part of the Commonwealth aged and disability care rollout

NSW
511,725
(+99 daily increase)

VIC
197,805
(+153 daily increase)

QLD
156,100
(+270 daily increase)

WA
72,376
(+283 daily increase)

TAS
16,897
(+35 daily increase)

SA
62,155
(+407 daily increase)

ACT
13,112
(+15 daily increase)

NT
5,808
(+5 daily increase)

24,558

doses administered to persons residing in other territories or with missing residential information

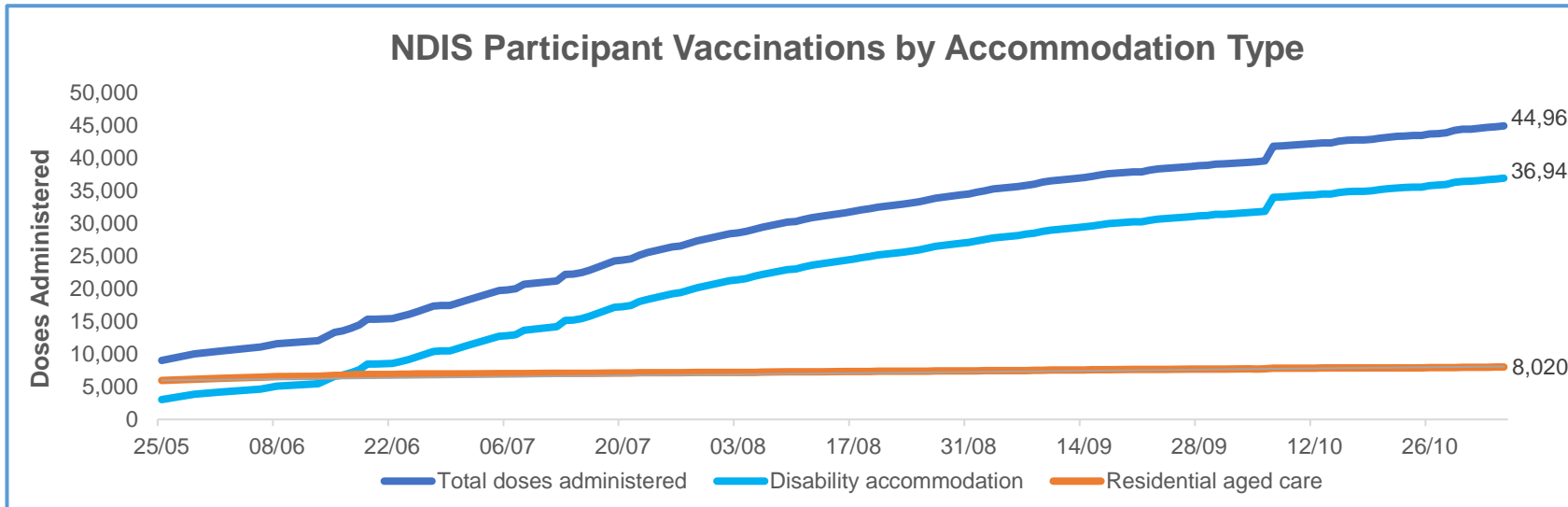
*Sourced from the Australian Immunisation Register. Includes all persons vaccinated at participating residential aged care, disability and related industry settings.
**State level breakdown indicates the residential location and may not align to the state in which the vaccination occurred.

Source: Australian Immunisation Register

Data as at:
04 Nov 2021*

Vaccination rate of people with disability and the disability workforce

Phase 1a – People with disability living in shared accommodation



	Total people with at least one dose	People fully vaccinated	Total number of individuals in cohort	Total doses administered	% People with at least one dose	% People fully vaccinated
NDIS participants living in shared accommodation **	23,211	21,754	27,603	44,965	84.1%	78.8%
NDIS screened workers ***	192,051	177,052	228,985	369,103	83.9%	77.3%



* Updates are available Monday to Friday on participants, and bi-weekly for workers, numbers may be up to four days old.

** Shared accommodation means two or more people with disability living in shared residential accommodation and NDIS participants living in Residential Aged Care accommodation as per the eligibility criteria of Phase 1a.

*** Total number of workers within the NDIS Commission Worker Screening database who have ever been successfully screened and linked to an NDIS registered provider or participant.

Source: Linkage between National Disability Insurance Agency data, NDIS Quality and Safeguards Commission data and the Australian Immunisation Register.

Residential aged care vaccination rollout

Residential aged care facilities status

100% Commonwealth facilities visited (2,573 planned sites)

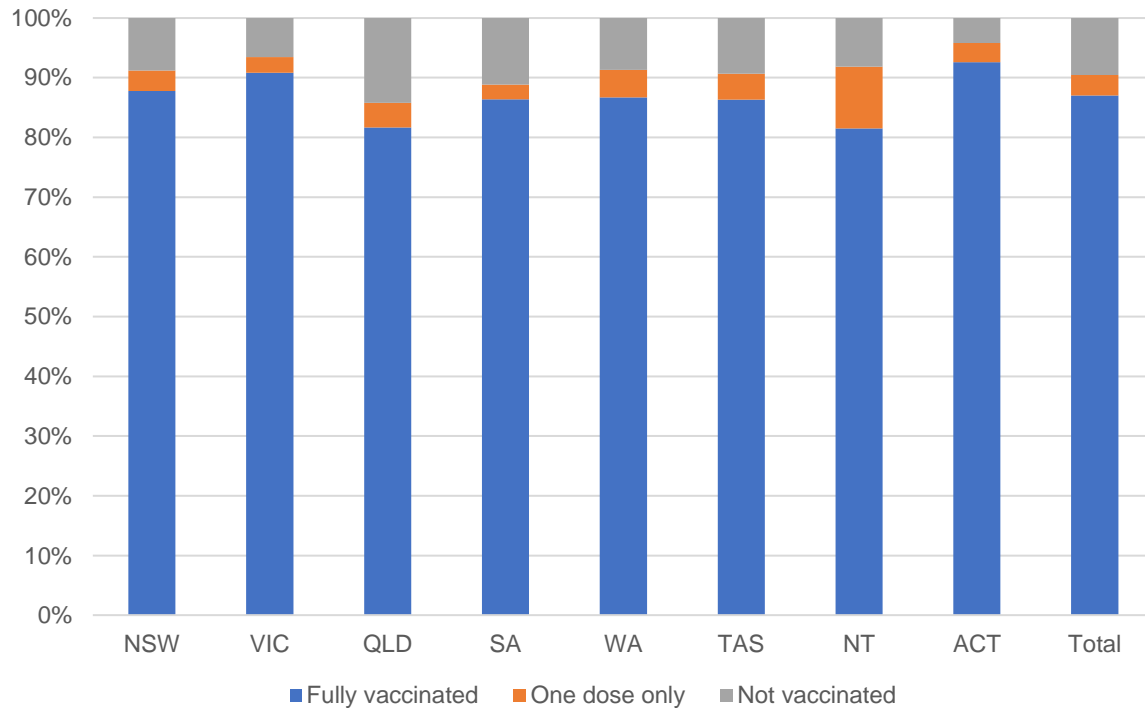
162,147 People fully vaccinated

168,563 People with at least one dose

Australia's COVID-19 Vaccine Roadmap

Data as at:
4 Nov 2021

Aged care resident vaccinations



Aged care worker vaccinations

Jurisdictions	Total workers with at least one dose	Workers fully vaccinated	% Workers with at least one dose	% Workers fully vaccinated
NSW	78,213	77,126	99.6%	98.2%
VIC	71,290	67,768	99.8%	94.9%
QLD	48,269	46,789	99.5%	96.4%
SA	27,421	25,993	100.0%	94.8%
WA	23,782	21,625	99.9%	90.8%
TAS	7,649	7,213	100.0%	94.3%
NT	823	818	99.5%	98.9%
ACT	2,978	2,897	99.8%	97.1%
Total	260,425	250,229	99.7%	95.8%

Source: My Aged Care Portal staff vaccination progress

**Resident vaccination information is reported manually by service providers

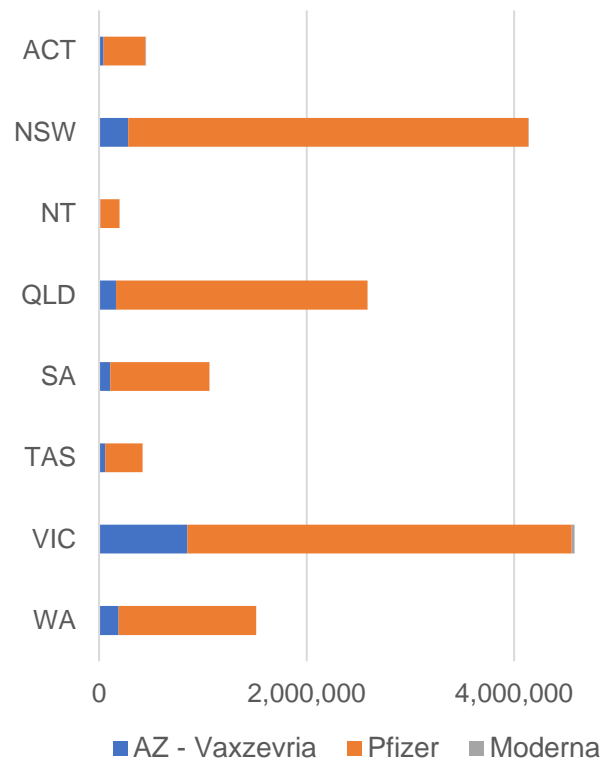
*Status updates are provided by facilities at least once per week. Reporting is updated Monday to Friday to encompass different facility updates being made on different days.

Data is sourced directly from Aged Care Service Providers and is not drawn or closely aligned with data from AIR due to inconsistencies and potential lags in uploading of records.

Data as at:
04 Nov 2021

Jurisdiction administered

Total vaccine doses administered in State and Territory clinics as at 04 November



14,955,819 total vaccine doses administered in State and Territory clinics as at 04 November
 + **53,846** recorded in the last 24 hours
 + **382,256** recorded in the last 7 days

NSW
4,139,826
 (+7,280 daily increase)

VIC
4,583,049
 (+13,797 daily increase)

QLD
2,588,034
 (+11,096 daily increase)

WA
1,513,734
 (+8,644 daily increase)

TAS
419,291
 (+2,026 daily increase)

SA
1,064,144
 (+7,583 daily increase)

ACT
451,504
 (+2,193 daily increase)

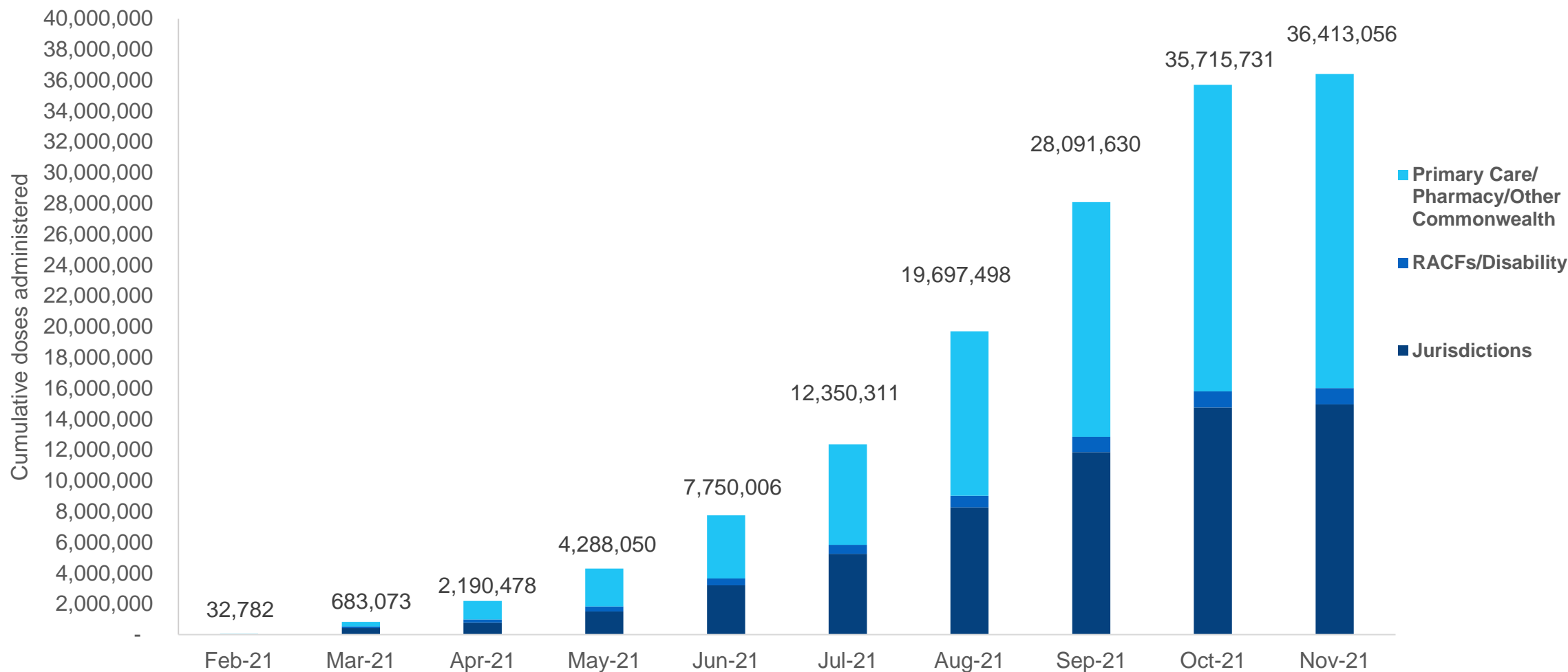
NT
196,237
 (+1,227 daily increase)

*Sourced from the Australian Immunisation Register and self-reported data. Numbers are calculated as difference in daily cumulative reported numbers to allow for historical corrections in all self-reported data sources.

Source: Australian Immunisation Register

Data as at:
04 Nov 2021

Cumulative doses administered by channel



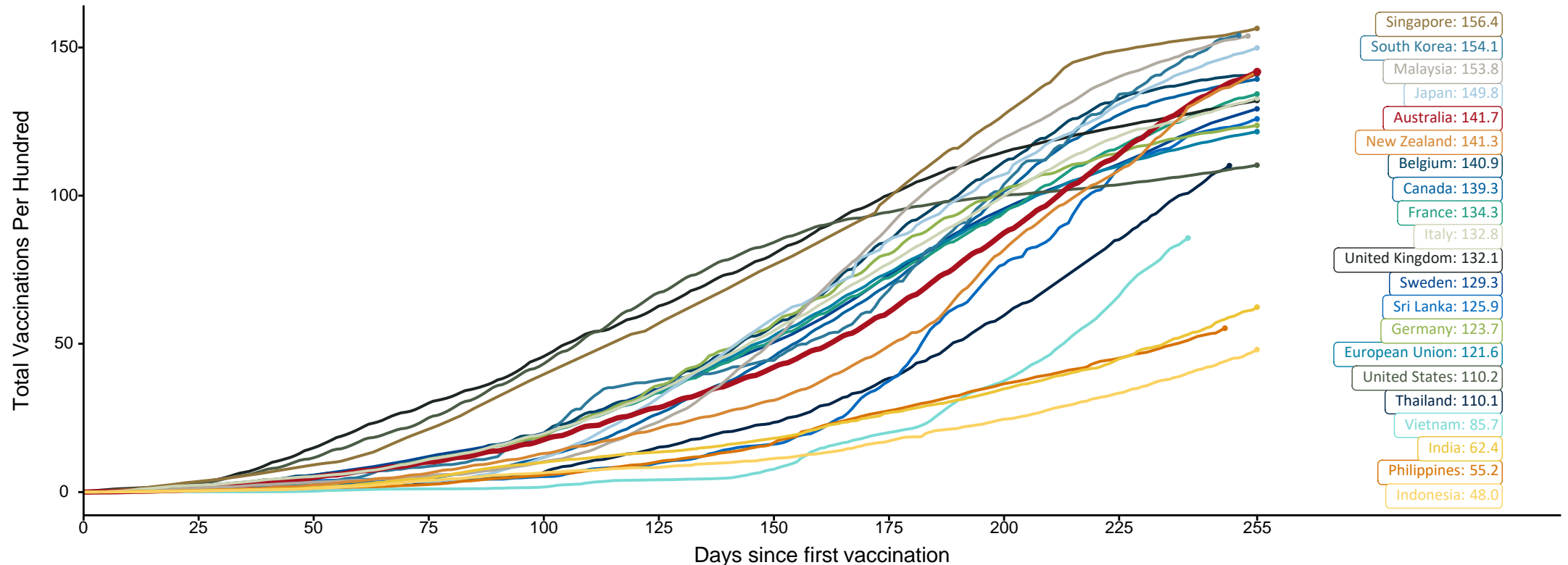
Source: Australian Immunisation Register

Doses at equivalent stages of rollout (Day 255)

Data as at:
04 Nov 2021

The x-axis is truncated at the length of Australia's vaccination program. Countries with intermittent reporting have had their doses per 100 imputed to Australia's current stage of rollout. Israel excluded as it is beyond scale of the graph

Cumulative doses administered (04 Nov): **36,413,056**

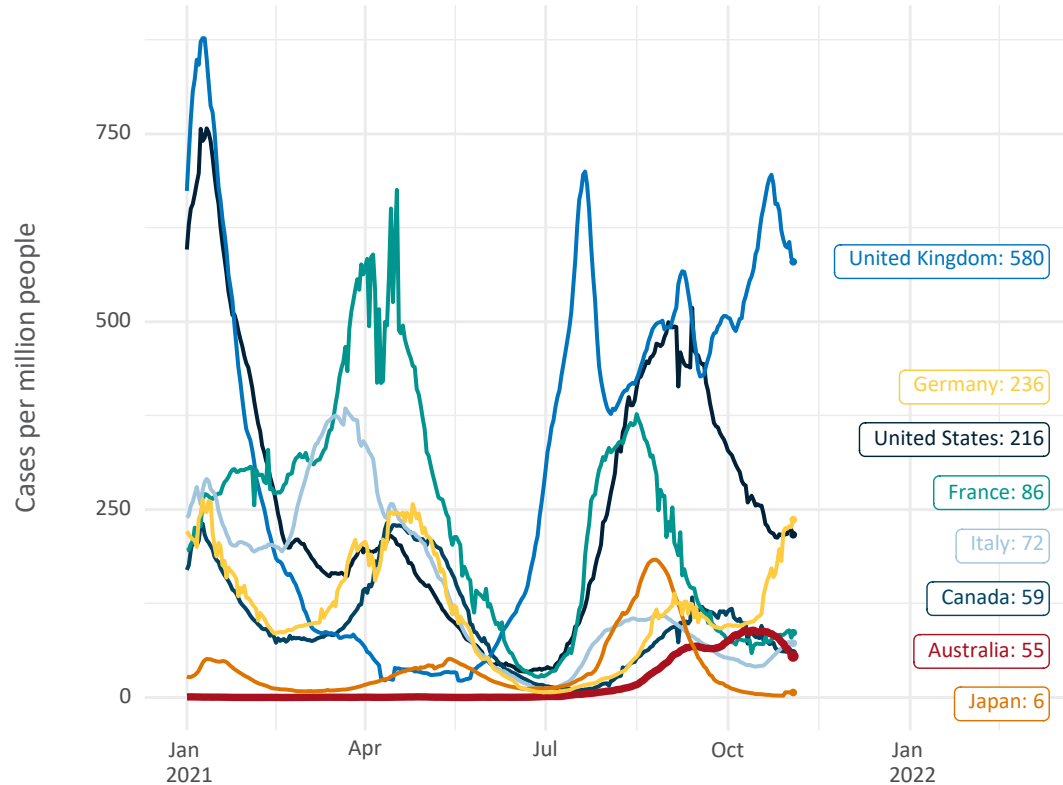


Note: From 15 September 2021, data for Australia includes all doses administered to people 12 and over. Prior to 15 September, data was for 16 and over
 Source: Department of Health (Australia), Our World in Data (international)
 Latest data: 04 November

Data as at:
04 Nov 2021

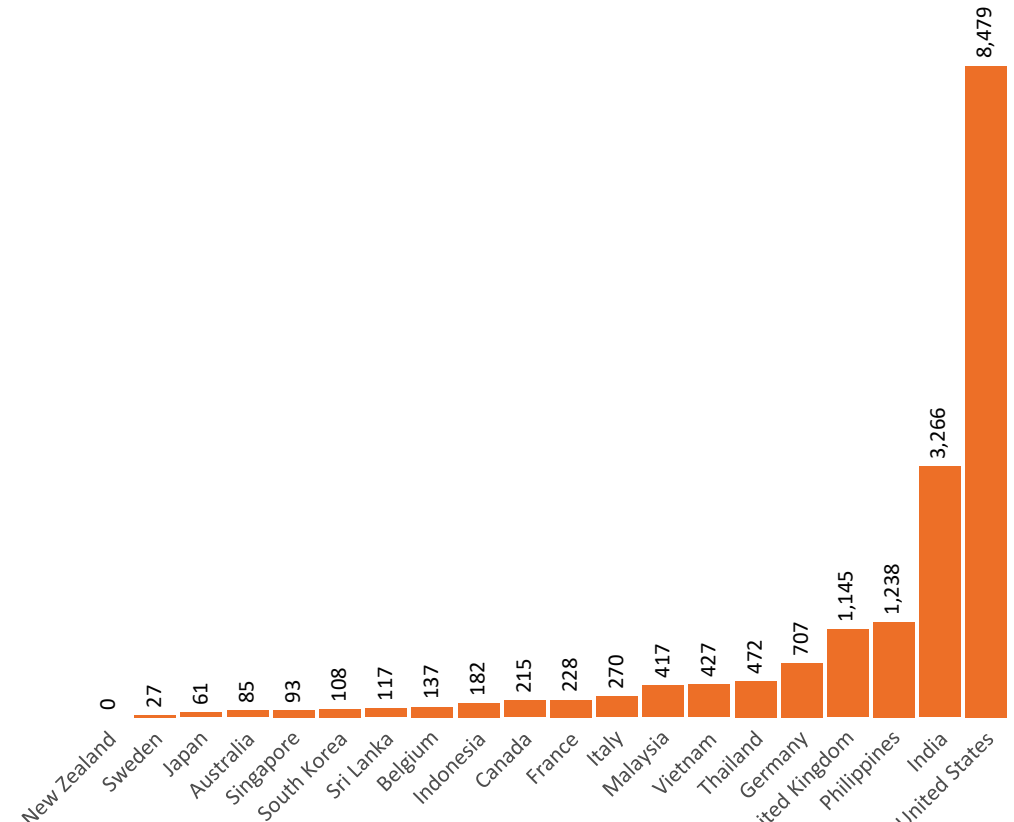
International data – COVID-19

New daily cases per million in 2021, Australia and G7 countries
Smoothed - 7 day average



Source: OWID
Data downloaded: 05 Nov 2021 07:44
Latest data: 03 Nov 2021


COVID-19 deaths in past 7 days - Australia and select countries



Source: OWID
Data downloaded: 05 Nov 2021 07:44
Latest data: 03 Nov 2021

Data as at midnight:
4 Nov 2021

Pandemic Response Payments (Current)



2.37 million
People have received at least one COVID Disaster Payment (including ISP200)

\$12.76 billion
Paid Out as at 4 Nov 2021

5.56 million
Claims granted across three different payments




94%
of Claims Received Digitally



COVID Disaster Payment:	5.39 million claims received - 2.18 million individuals paid a total of \$12.33 billion.
\$200 Income Support Payment:	326,000 claims received - 182,000 individuals paid a total of \$264.49 million.
Pandemic Leave Disaster Payment:	120,000 claims received - 103,000 individuals paid a total of \$167.20 million.

CURRENT COVID-19 DISASTER PAYMENTS



THREE PAYMENTS AVAILABLE

COVID Disaster Payment
assisting during a lockdown event in a Commonwealth hotspot.

Income Support Payment \$200
for income support recipients who lost at least 8 hours of work.

Pandemic Leave Disaster Payment
for those who have to self-isolate, quarantine or care.

For more information visit:
servicesaustralia.gov.au

New South Wales
Active lockdown since 24 Jun
Partial reopening from 10 Oct

1.08m people have received at least one COVID Disaster Payment.

\$7.46b paid out as at 4 Nov 2021.

\$98m paid in initial and reoccurring payments in the week ending 31 Oct 2021.

Cumulative payments made by State since activation on 1 Jul 2021.

Date	10 Oct	17 Oct	24 Oct	31 Oct	4 Nov
Payments	\$6.91b	\$7.15b	\$7.32b	\$7.42b	\$7.46b

Victoria
Active lockdown (#6) since 6 Aug
Partial reopening from 28 Oct

740,000 people have received at least one COVID Disaster Payment.

\$4.22b paid out as at 4 Nov 2021.

\$111m paid in initial and reoccurring payments in the week ending 31 Oct 2021.

Cumulative payments made by State since activation on 8 Jun 2021.

Date	10 Oct	17 Oct	24 Oct	31 Oct	4 Nov
Payments	\$3.25b	\$3.68b	\$4.07b	\$4.19b	\$4.22b

Australian Capital Territory
Active lockdown since 12 Aug
Partial reopening from 14 Oct

65,000 people have received at least one COVID Disaster Payment.

\$340.4m paid out as at 4 Nov 2021.

\$9.2m paid in initial and reoccurring payments in the week ending 31 Oct 2021.

Cumulative payments made by State since activation on 20 Aug 2021.

Date	10 Oct	17 Oct	24 Oct	31 Oct	4 Nov
Payments	\$297.4m	\$311.9m	\$329.3m	\$338.6m	\$340.4m

Tasmania
Lockdown from 15 Oct to 18 Oct
Claiming period ends 12 Nov

5,400 people have received at least one COVID Disaster Payment.

\$2.8m paid out as at 4 Nov 2021.

\$1.7 paid in initial payments in the week ending 31 Oct 2021.

Cumulative payments made by State since activation on 22 Oct 2021.

Date	24 Oct	31 Oct	4 Nov
Payments	\$390,000	\$2.1m	\$2.8m

Data as at midnight:
4 Nov 2021

Pandemic Response Payments (Closed Events)

CLOSED COVID-19 DISASTER PAYMENTS


Northern Territory

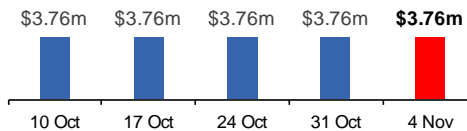
Lockdown from 18 – 20 Jul
Claiming period ended 13 Sep

5,805 people have received at least one COVID Disaster Payment.

\$3.76m paid out as at 4 Nov 2021.

There were no additional payments made in the week ending 31 Oct 2021.

 Cumulative payments made by State since activation on 25 Aug 2021.




Queensland

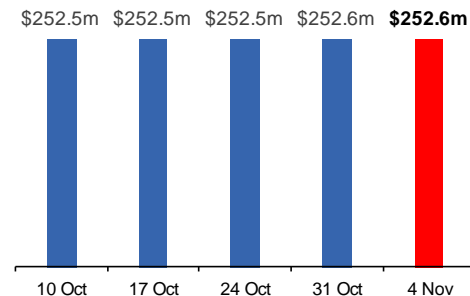
Lockdown from 31 Jul – 11 Aug
Claiming period ended 28 Aug

196,000 people have received at least one COVID Disaster Payment.

\$252.6m paid out as at 4 Nov 2021.

\$12,000 paid in initial and reoccurring payments in the week ending 31 Oct 2021.

 Cumulative payments made by State since activation on 7 Aug 2021.




South Australia

Lockdown from 21 – 27 Jul
Claiming period ended 17 Aug

86,000 people have received at least one COVID Disaster Payment.

\$48.2m paid out as at 4 Nov 2021.

There were no additional payments made in the week ending 31 Oct 2021.

 Cumulative payments made by State since activation on 28 Jul 2021.

