



**Australian Government**  
**Operation COVID Shield**

# COVID-19 Vaccine Rollout

04 November 2021

Data as at:  
03 Nov 2021

## Total vaccine doses



**36,231,223** total vaccine doses administered nationally as at 03 November  
**+181,768** recorded in the last 24 hours



**18,322,580**

people have had at least one dose

**88.9%**

of people over the age of 16 have had at least one dose



**16,304,118**

people are fully vaccinated

**79.1%**

of people over the age of 16 are fully vaccinated

**NSW**  
**12,510,509**  
(+39,825 daily increase)

**VIC**  
**10,012,528**  
(+59,105 daily increase)

**QLD**  
**6,293,712**  
(+40,169 daily increase)

**WA**  
**3,185,161**  
(+15,529 daily increase)

**TAS**  
**756,082**  
(+4,801 daily increase)

**SA**  
**2,245,362**  
(+16,545 daily increase)

**ACT**  
**902,455**  
(+3,635 daily increase)

**NT**  
**325,414**  
(+2,159 daily increase)

\*Administration state breakdown indicates state in which a vaccine was administered

\*\*Overall dose count includes instances of more than two doses per person in a small number of cases.

Data as at:  
03 Nov 2021

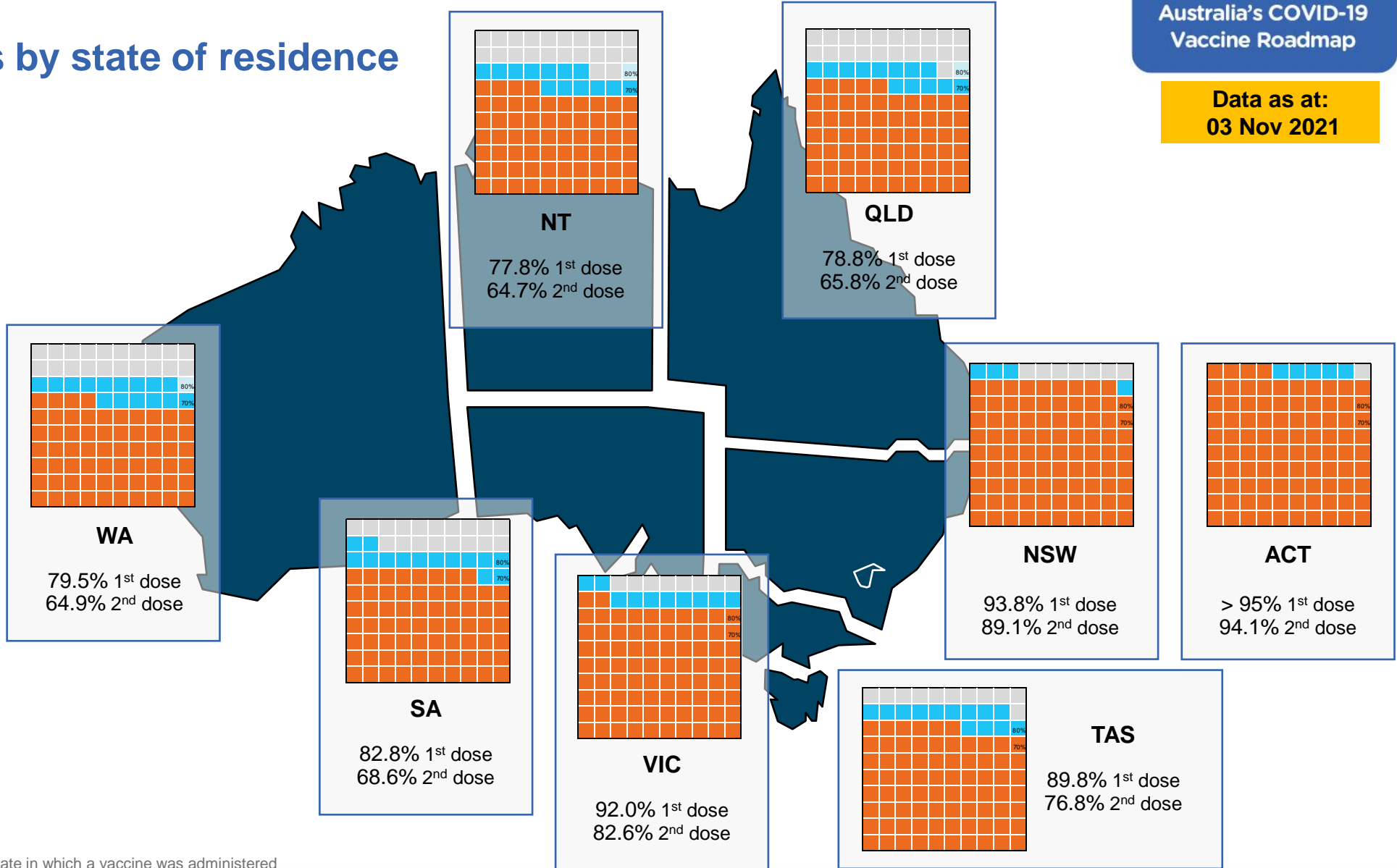
# Vaccinations by state of residence

## First doses

Age	Today	4 weeks ago	8 weeks ago
16+	88.9%	81.6%	66.4%
50+	>95%	91.5%	83.7%
70+	>95%	>95%	91.6%

## Fully vaccinated

Age	Today	4 weeks ago	8 weeks ago
16+	79.1%	60.2%	41.3%
50+	87.4%	75.4%	60.7%
70+	91.6%	82.2%	70.7%



\*Residential state may differ from the state in which a vaccine was administered

## Commonwealth and Jurisdiction vaccine doses administered

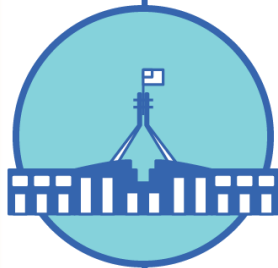
Data as at:  
03 Nov 2021



**36,231,223** total vaccine doses administered nationally as at 03 November  
**+ 181,768** recorded in the last 24 hours



**14,901,973** doses administered by state and territory facilities  
**+ 46,739** recorded in the last 24 hours



**21,329,250** doses administered by commonwealth facilities  
**+ 135,029** recorded in the last 24 hours  
**20,270,083** total vaccine doses administered in primary care settings  
**1,059,167** total vaccine doses administered in aged care and disability settings

NSW	Jurisdictions	Commonwealth
Cumulative	4,132,546	8,377,963
Daily increase	8,139	31,686

VIC	Jurisdictions	Commonwealth
Cumulative	4,569,252	5,443,276
Daily increase	15,545	43,560

QLD	Jurisdictions	Commonwealth
Cumulative	2,576,938	3,716,774
Daily increase	10,288	29,881

WA	Jurisdictions	Commonwealth
Cumulative	1,505,090	1,680,071
Daily increase	71	15,458

TAS	Jurisdictions	Commonwealth
Cumulative	417,265	338,817
Daily increase	2,263	2,538

SA	Jurisdictions	Commonwealth
Cumulative	1,056,561	1,188,801
Daily increase	7,185	9,360

ACT	Jurisdictions	Commonwealth
Cumulative	449,311	453,144
Daily increase	2,083	1,552

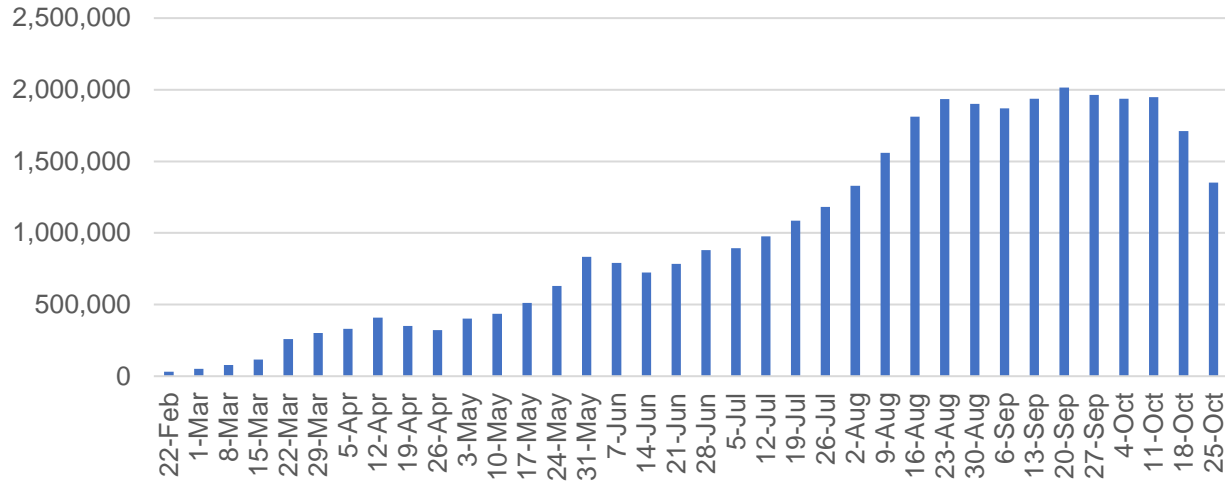
NT	Jurisdictions	Commonwealth
Cumulative	195,010	130,404
Daily increase	1,165	994

# Vaccine milestone charts

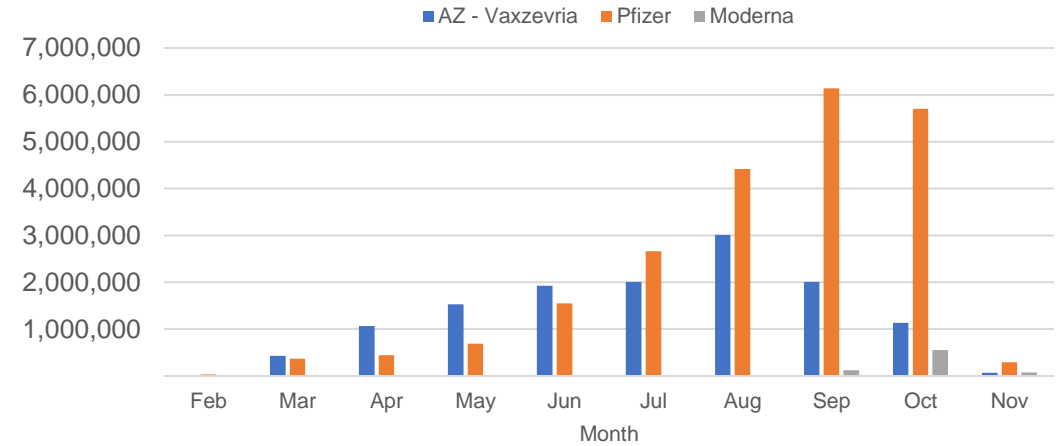
Data as at:  
03 Nov 2021

Australia's COVID-19  
Vaccine Roadmap

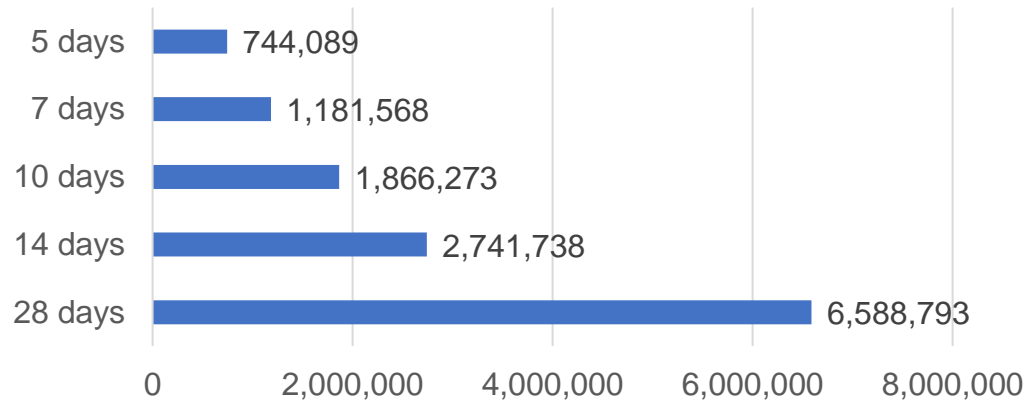
Jabs in arms by week



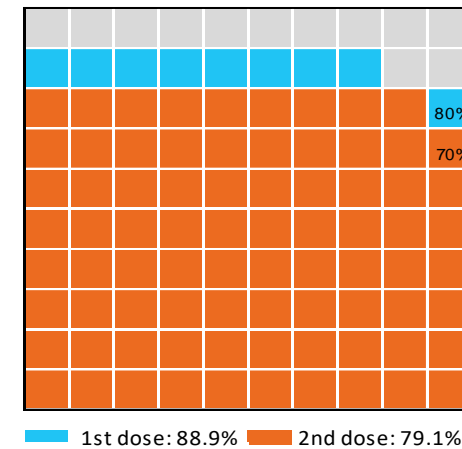
Doses by administration month and vaccine type



Doses Reported



Eligible population percentage coverage



\*Sourced from the Australian Immunisation Register.

\*Each square represents 1% of the national population. Squares are filled as milestones are achieved.

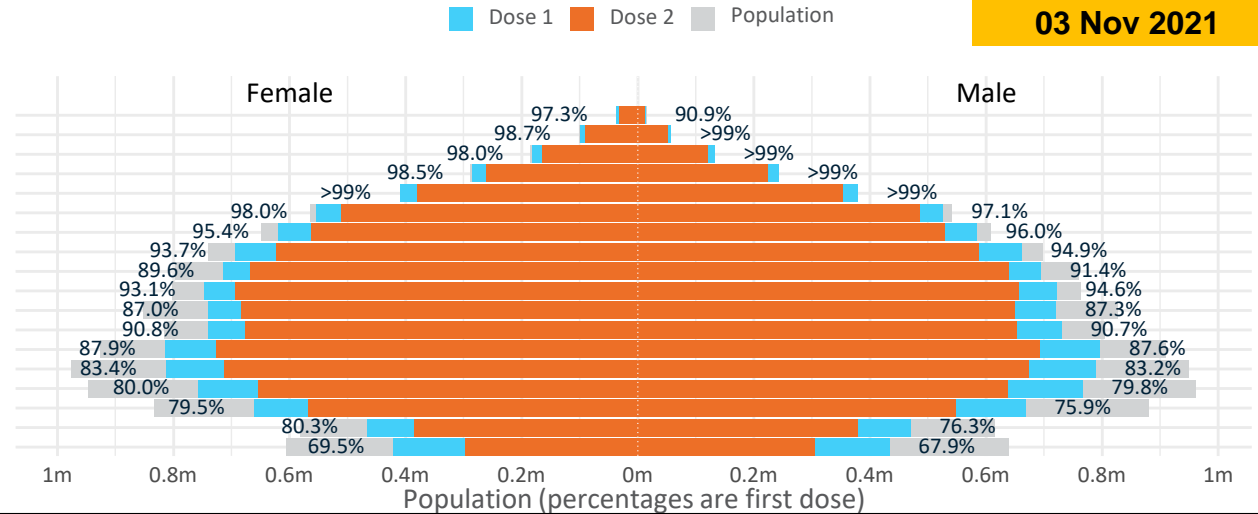
# Doses by age and sex

First and second doses by age and sex

Data as at:  
03 Nov 2021

	16+	50+	70+	12-15
Dose 1	88.86% (18,322,580 doses / 20,619,959 people)	95.51% (8,356,874 doses / 8,749,703 people)	>99% (2,917,344 doses / 2,934,706 people)	68.71% (854,803 doses / 1,243,990 people)
Dose 2	79.07% (16,304,118 doses / 20,619,959 people)	87.42% (7,649,020 doses / 8,749,703 people)	91.63% (2,689,201 doses / 2,934,706 people)	48.49% (603,161 doses / 1,243,990 people)

Age	Dose 1	Dose 2
95+	50,598 (95.6%)	44,564 (84.2%)
90-94	157,559 (>99%)	141,939 (89.6%)
85-89	314,200 (>99%)	286,131 (90.5%)
80-84	527,031 (>99%)	486,370 (92.0%)
75-79	788,735 (>99%)	732,757 (94.7%)
70-74	1,079,221 (97.7%)	997,440 (90.3%)
65-69	1,204,884 (95.8%)	1,091,644 (86.8%)
60-64	1,356,276 (94.4%)	1,211,585 (84.3%)
55-59	1,409,425 (90.6%)	1,307,228 (84.0%)
50-54	1,468,945 (93.9%)	1,349,362 (86.2%)
45-49	1,462,455 (87.2%)	1,331,642 (79.4%)
40-44	1,473,117 (90.9%)	1,330,361 (82.1%)
35-39	1,615,545 (88.0%)	1,420,638 (77.4%)
30-34	1,609,787 (83.7%)	1,391,093 (72.3%)
25-29	1,532,905 (80.4%)	1,297,364 (68.0%)
20-24	1,335,471 (78.0%)	1,119,306 (65.4%)
16-19	936,426 (78.3%)	764,694 (63.9%)
12-15	854,803 (68.7%)	603,161 (48.5%)



	AUS	ACT	NSW	NT	QLD	SA	TAS	VIC	WA
16 and over - dose 1	18,322,580	342,590	6,157,098	148,224	3,241,102	1,192,284	395,198	4,976,856	1,682,368
16 and over - dose 2	16,304,118	323,644	5,846,923	123,316	2,706,602	988,024	338,156	4,464,013	1,371,601
16 and over - population	20,619,959*	344,037	6,565,651	190,571	4,112,707	1,440,400	440,172	5,407,574	2,114,978
16 and over % with dose 1	88.86%	>99%	93.78%	77.78%	78.81%	82.77%	89.78%	92.03%	79.55%
16 and over % with dose 2	79.07%	94.07%	89.05%	64.71%	65.81%	68.59%	76.82%	82.55%	64.85%
50 and over - dose 1	8,356,874	132,866	2,750,054	52,517	1,594,584	619,292	207,498	2,144,568	804,011
50 and over - dose 2	7,649,020	127,081	2,633,497	46,536	1,409,003	538,085	185,122	1,972,351	696,463
50 and over - population	8,749,703	127,802	2,807,793	62,280	1,758,855	674,384	220,036	2,211,211	885,370
50 and over % with dose 1	95.51%	>99%	97.94%	84.32%	90.66%	91.83%	94.30%	96.99%	90.81%
50 and over % with dose 2	87.42%	>99%	93.79%	74.72%	80.11%	79.79%	84.13%	89.20%	78.66%
70 and over - dose 1	2,917,344	43,192	968,981	10,942	556,846	233,865	76,428	736,655	269,899
70 and over - dose 2	2,689,201	41,219	925,792	9,838	503,887	205,883	68,553	679,027	237,930
70 and over - population	2,934,706	39,946	962,606	12,343	577,767	240,514	77,155	743,519	280,281
70 and over % with dose 1	>99%	>99%	>99%	88.65%	96.38%	97.24%	>99%	>99%	96.30%
70 and over % with dose 2	91.63%	>99%	96.18%	79.71%	87.21%	85.60%	88.85%	91.33%	84.89%
12 to 15 - dose 1	854,803	19,435	311,228	7,204	142,110	42,135	16,044	252,639	58,459
12 to 15 - dose 2	603,161	16,916	258,821	4,352	83,122	20,689	7,149	179,840	29,206
12 to 15 - population	1,243,990	19,693	390,330	13,060	270,146	82,747	26,308	308,611	132,869
12 to 15 % with dose 1	68.71%	98.69%	79.73%	55.16%	52.60%	50.92%	60.99%	81.86%	44.00%
12 to 15 % with dose 2	48.49%	85.90%	66.31%	33.32%	30.77%	25.00%	27.17%	58.27%	21.98%

\*National population will not equal sum of listed jurisdictions due to a small number of people counted in national population residing in some 'other' territories. Sum of state doses will not add to national total as some records are unable to be geocoded to a State or Territory.

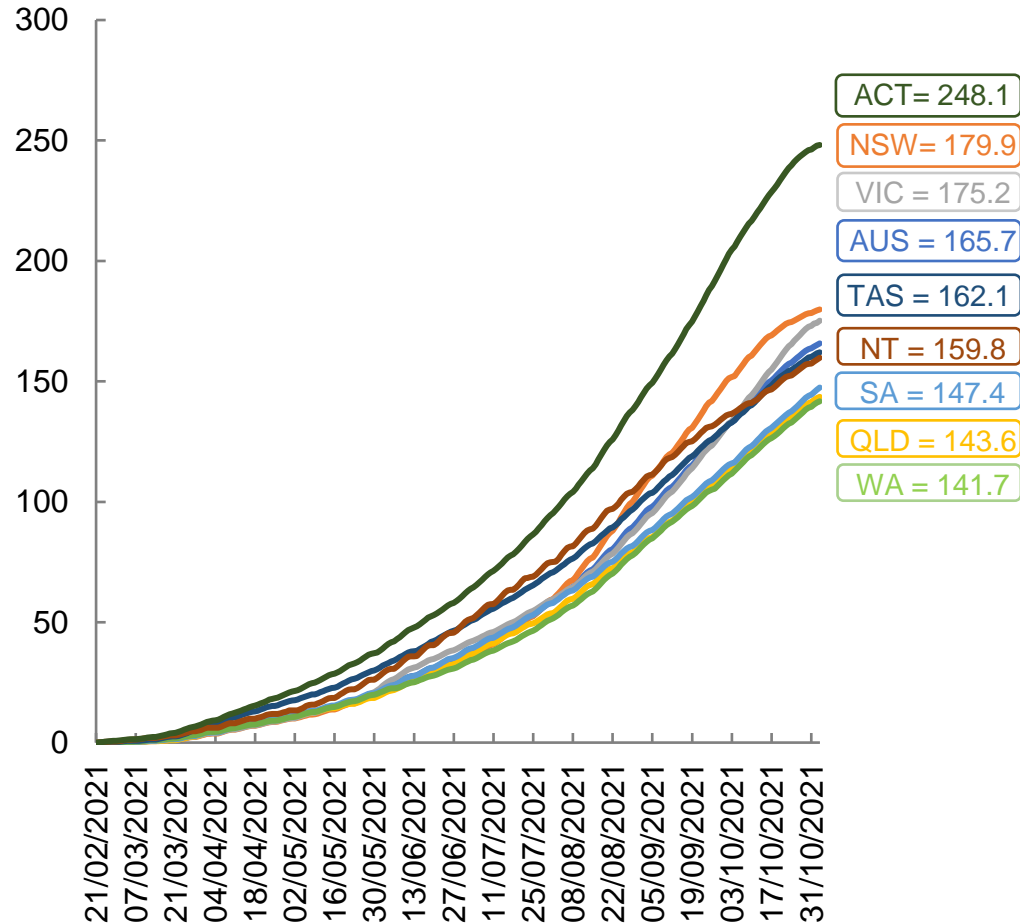
Doses sourced from Australian Immunisation Register, population from ABS ERP June 2020

# Vaccinations by location

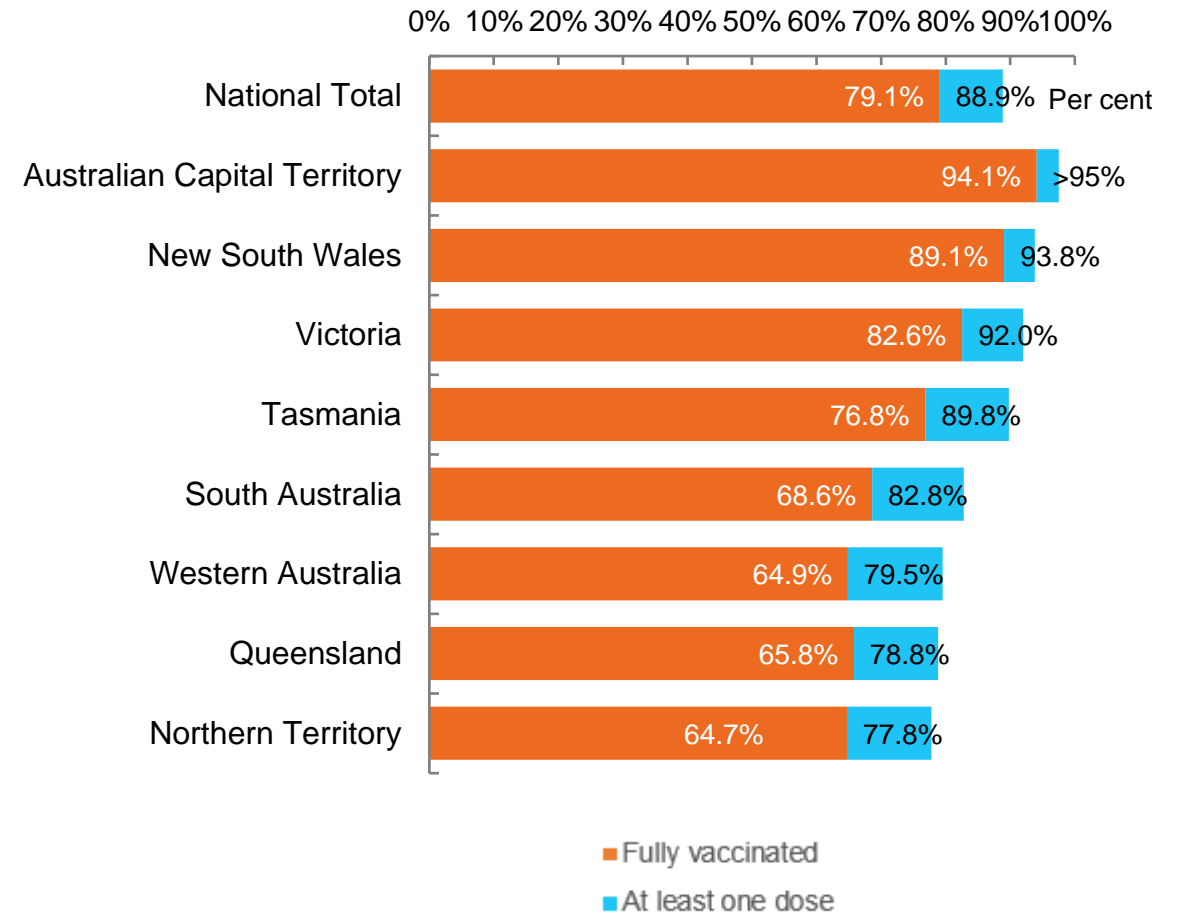
Data as at:  
03 Nov 2021

Australia's COVID-19  
Vaccine Roadmap

Cumulative total doses administered vs eligible state populations\*



First and Second Doses by state of residence



\*Not an indication of percentage vaccinated, numbers will exceed 100 due to multiple doses required per person of the population. All doses are included, including those for the 12-15 cohort, and are based on vaccination provider location.

# Aboriginal and Torres Strait Islander peoples

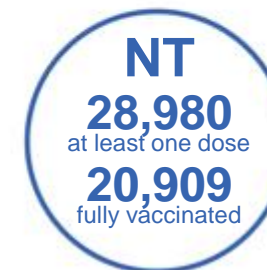
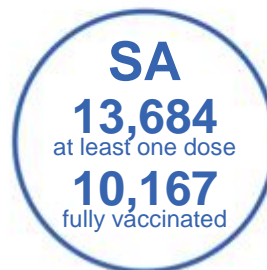
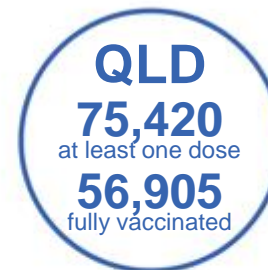
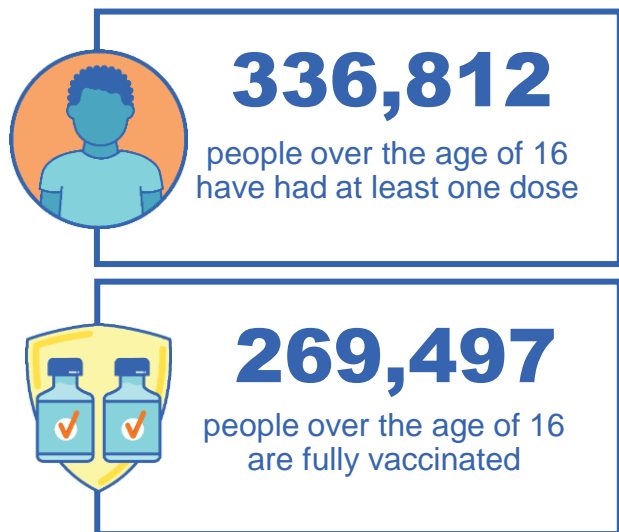
## Number of people vaccinated

Data as at:  
31 Oct 2021  
Updated weekly

Australia's COVID-19  
Vaccine Roadmap

### 169 Aboriginal community controlled health services (ACCHS)

0#	50	26	39	12	3	21	18
<b>ACT</b>	<b>NSW</b>	<b>NT</b>	<b>QLD</b>	<b>SA</b>	<b>TAS</b>	<b>VIC</b>	<b>WA</b>



**9,080** people with at least one dose  
**6,047** people fully vaccinated

residing in other territories or with missing residential information

Source: Australian Immunisation Register

\*Identifying as Aboriginal and Torres Strait Islander is optional and the estimated population may be under reported.

\*\*Includes all Aboriginal and Torres Strait Islander peoples who have received a vaccination, not limited to those administered in an ACCHS setting

\*\*\*Updated weekly.

#ACCHS in the ACT are currently operating as a Commonwealth Vaccine Clinics so not included to avoid double counting



Data as at:  
03 Nov 2021

## Commonwealth primary care



### Primary care vaccine administration sites

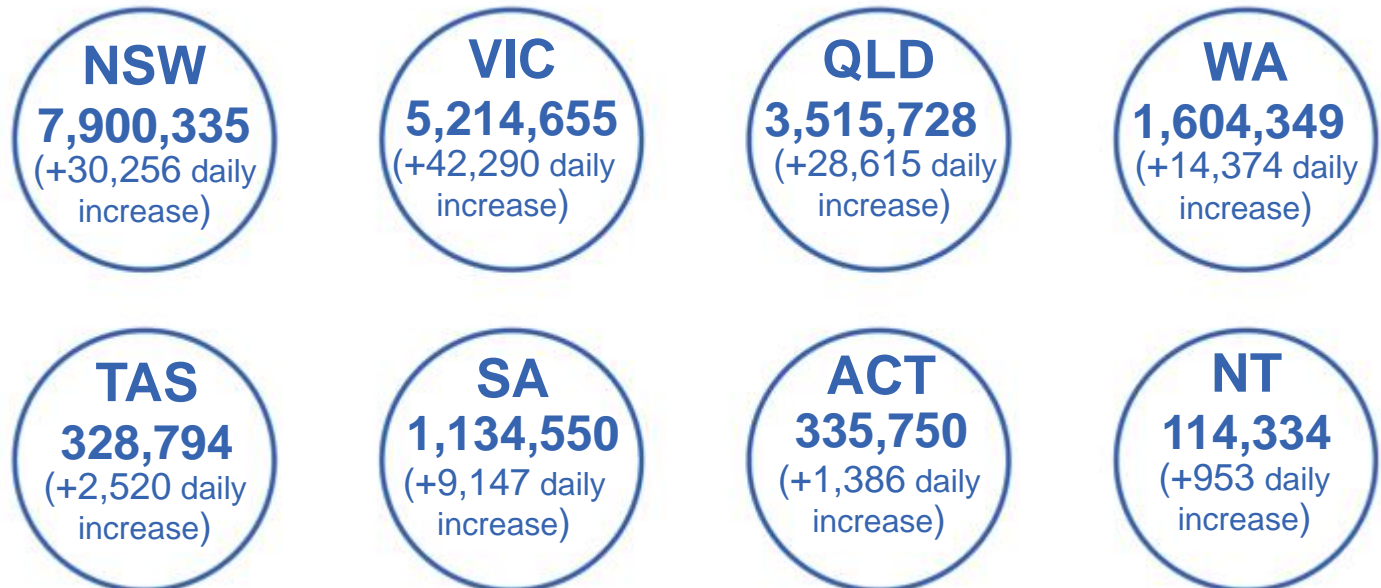
<b>5,604</b>	<b>137</b>	<b>169</b>	<b>3,416</b>
GPs	CVCs	ACCHS	Pharmacies



**20,270,083** total vaccine doses administered primary care settings as at 03 November  
**+ 132,605** recorded in the last 24 hours

### Primary care vaccinations by provider type

	Doses administered	Daily increase	7 day increase
<b>General Practice*</b> includes other Commonwealth	18,502,766	95,727	575,482
<b>Pharmacy</b>	1,767,317	36,878	201,439



**121,588** doses administered to persons residing in other territories or with missing residential information

\*General practice includes Commonwealth Vaccination Clinics, Aboriginal Community Health Centres, Royal Flying Doctor Service and other Commonwealth vaccination facilities

Source: Australian Immunisation Register

Data as at:  
03 Nov 2021

# Commonwealth aged care and disability doses administered



**1,059,167** (+ 2,424 last 24 hours)

Total vaccine doses administered in aged care and disability facilities as at 03 November

Number of doses administered as part of the Commonwealth aged and disability care rollout

**NSW**  
**511,626**  
(+927 daily increase)

**VIC**  
**197,652**  
(+148 daily increase)

**QLD**  
**155,830**  
(+318 daily increase)

**WA**  
**72,093**  
(+587 daily increase)

**TAS**  
**16,862**  
(+2 daily increase)

**SA**  
**61,748**  
(+268 daily increase)

**ACT**  
**13,097**  
(+30 daily increase)

**NT**  
**5,803**  
(+4 daily increase)

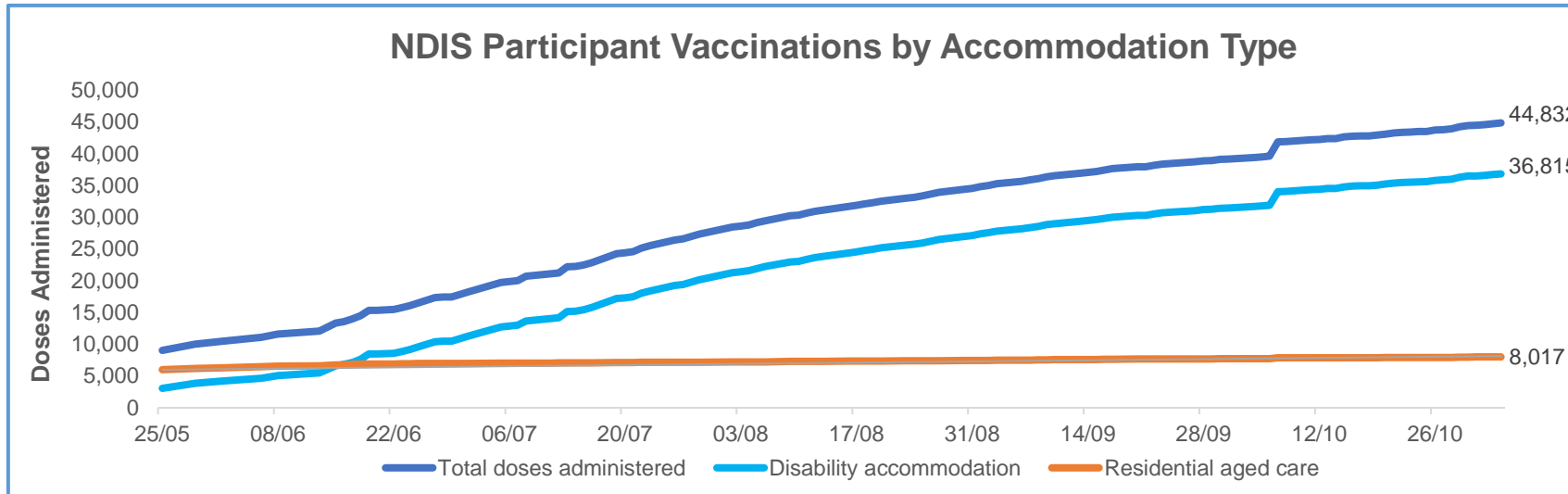
\*Sourced from the Australian Immunisation Register. Includes all persons vaccinated at participating residential aged care, disability and related industry settings.  
\*\*State level breakdown indicates the residential location and may not align to the state in which the vaccination occurred.

**24,456** doses administered to persons residing in other territories or with missing residential information

Data as at:  
03 Nov 2021\*

# Vaccination rate of people with disability and the disability workforce

## Phase 1a – People with disability living in shared accommodation



	Total people with at least one dose	People fully vaccinated	Total number of individuals in cohort	Total doses administered	% People with at least one dose	% People fully vaccinated
NDIS participants living in shared accommodation **	23,159	21,673	27,603	44,832	83.9%	78.5%
NDIS screened workers ***	191,048	174,888	228,985	365,936	83.4%	76.4%

\* Updates are available Monday to Friday on participants, and bi-weekly for workers, numbers may be up to four days old.

\*\* Shared accommodation means two or more people with disability living in shared residential accommodation and NDIS participants living in Residential Aged Care accommodation as per the eligibility criteria of Phase 1a.

\*\*\* Total number of workers within the NDIS Commission Worker Screening database who have ever been successfully screened and linked to an NDIS registered provider or participant.

Source: Linkage between National Disability Insurance Agency data, NDIS Quality and Safeguards Commission data and the Australian Immunisation Register.

## Residential aged care vaccination rollout

### Residential aged care facilities status

**100%** Commonwealth facilities visited (2,573 planned sites)

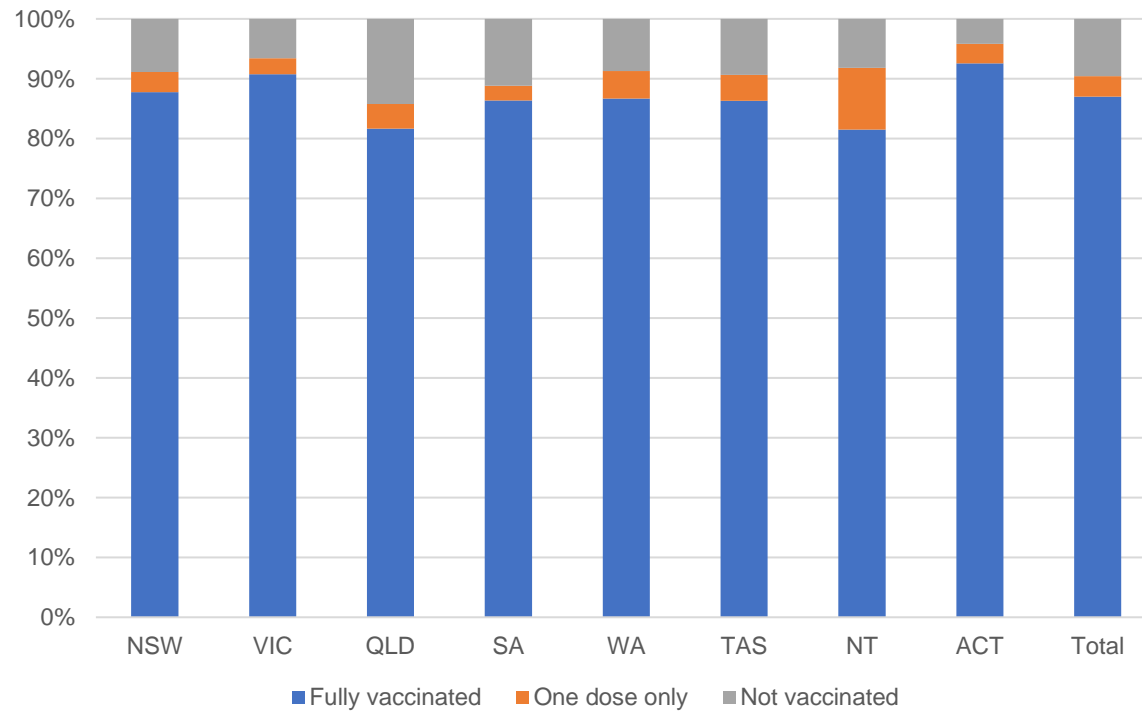
**162,129** People fully vaccinated

**168,549** People with at least one dose

Australia's COVID-19 Vaccine Roadmap

Data as at:  
3 Nov 2021

### Aged care resident vaccinations



### Aged care worker vaccinations

Jurisdictions	Total workers with at least one dose	Workers fully vaccinated	% Workers with at least one dose	% Workers fully vaccinated
NSW	78,205	77,107	99.6%	98.2%
VIC	71,154	67,510	99.7%	94.6%
QLD	48,262	46,671	99.5%	96.2%
SA	27,422	25,985	100.0%	94.7%
WA	23,784	21,613	99.9%	90.8%
TAS	7,687	7,139	100.0%	92.9%
NT	823	818	99.5%	98.9%
ACT	2,978	2,897	99.8%	97.1%
<b>Total</b>	<b>260,315</b>	<b>249,740</b>	<b>99.7%</b>	<b>95.6%</b>

Source: My Aged Care Portal staff vaccination progress

\*\*Resident vaccination information is reported manually by service providers

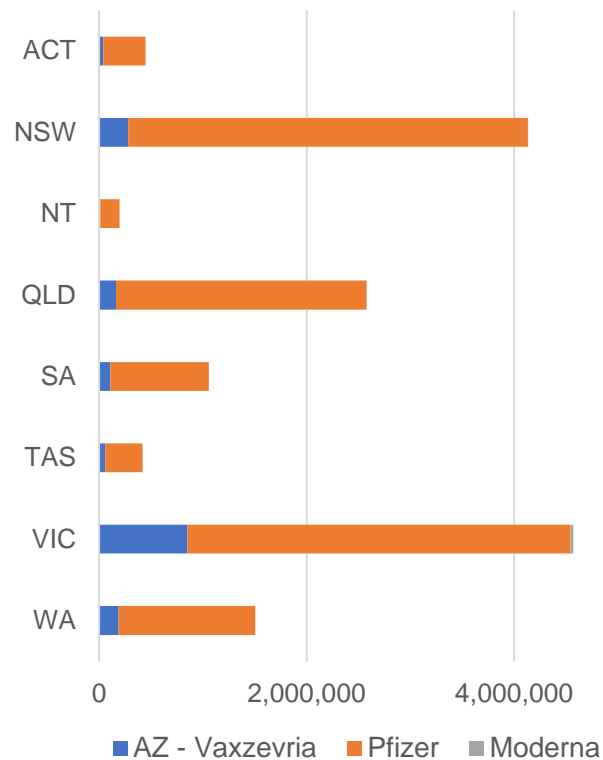
\*Status updates are provided by facilities at least once per week. Reporting is updated Monday to Friday to encompass different facility updates being made on different days.

Data is sourced directly from Aged Care Service Providers and is not drawn or closely aligned with data from AIR due to inconsistencies and potential lags in uploading of records.

Data as at:  
03 Nov 2021

# Jurisdiction administered

Total vaccine doses administered in State and Territory clinics as at 03 November



**14,901,973** total vaccine doses administered in State and Territory clinics as at 03 November  
 + **46,739** recorded in the last 24 hours  
 + **392,552** recorded in the last 7 days

**NSW**  
**4,132,546**  
 (+8,139 daily increase)

**VIC**  
**4,569,252**  
 (+15,545 daily increase)

**QLD**  
**2,576,938**  
 (+10,288 daily increase)

**WA**  
**1,505,090**  
 (+71 daily increase)

**TAS**  
**417,265**  
 (+2,263 daily increase)

**SA**  
**1,056,561**  
 (+7,185 daily increase)

**ACT**  
**449,311**  
 (+2,083 daily increase)

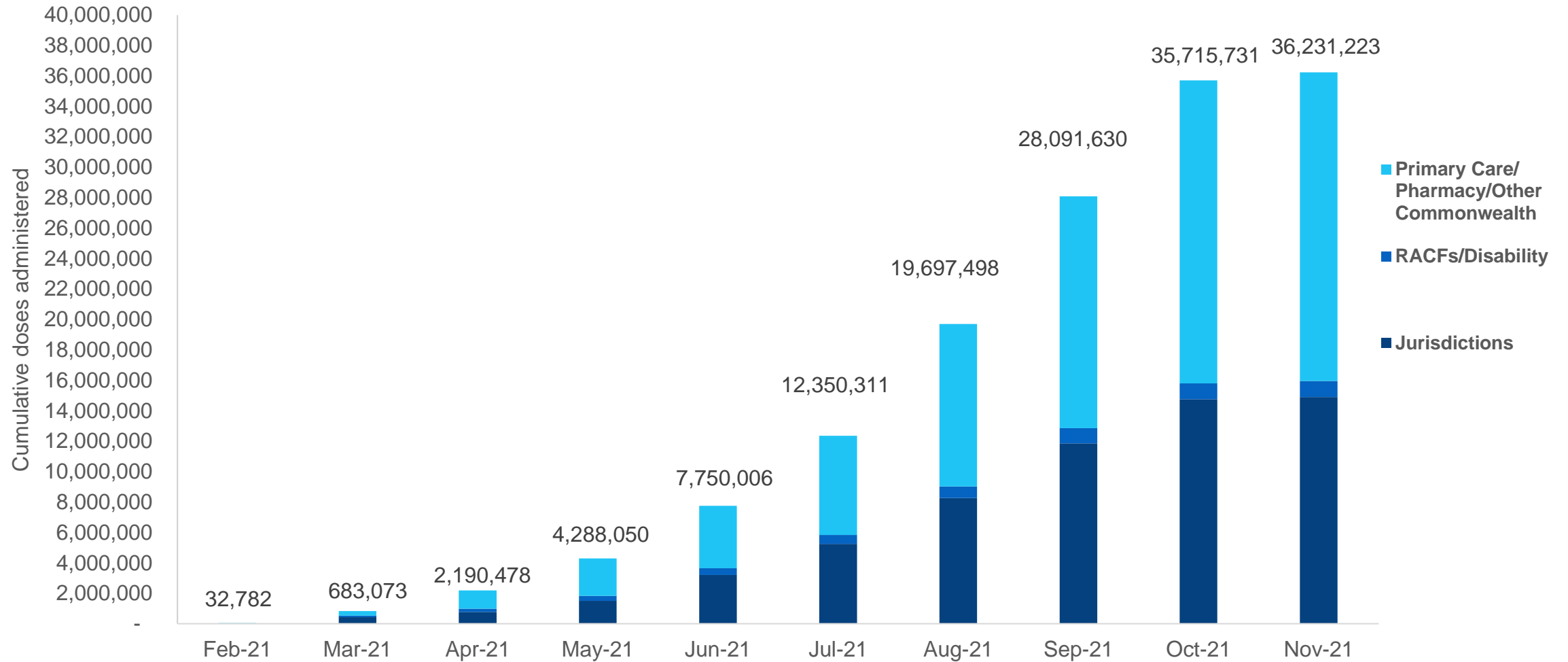
**NT**  
**195,010**  
 (+1,165 daily increase)

\*Sourced from the Australian Immunisation Register and self-reported data. Numbers are calculated as difference in daily cumulative reported numbers to allow for historical corrections in all self-reported data sources.

Source: Australian Immunisation Register

Data as at:  
03 Nov 2021

# Cumulative doses administered by channel



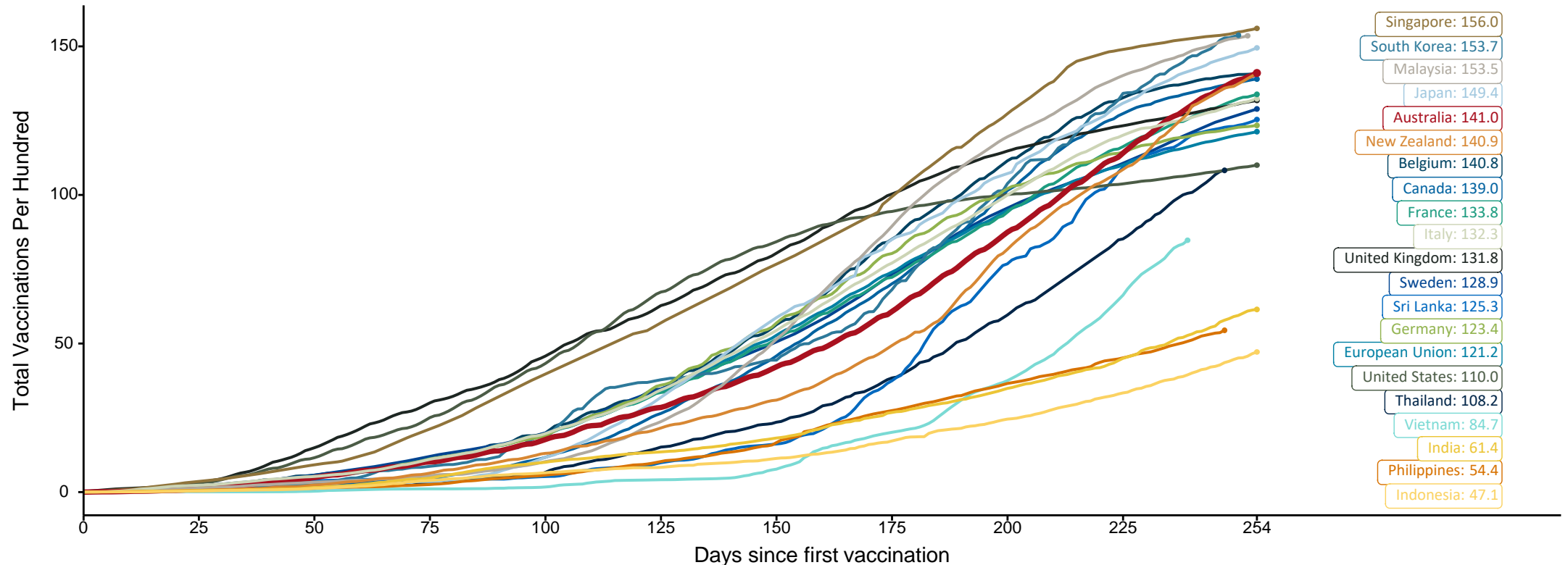
Source: Australian Immunisation Register

# Doses at equivalent stages of rollout (Day 254)

Data as at:  
03 Nov 2021

The x-axis is truncated at the length of Australia's vaccination program. Countries with intermittent reporting have had their doses per 100 imputed to Australia's current stage of rollout. Israel excluded as it is beyond scale of the graph

Cumulative doses administered (03 Nov): **36,231,223**

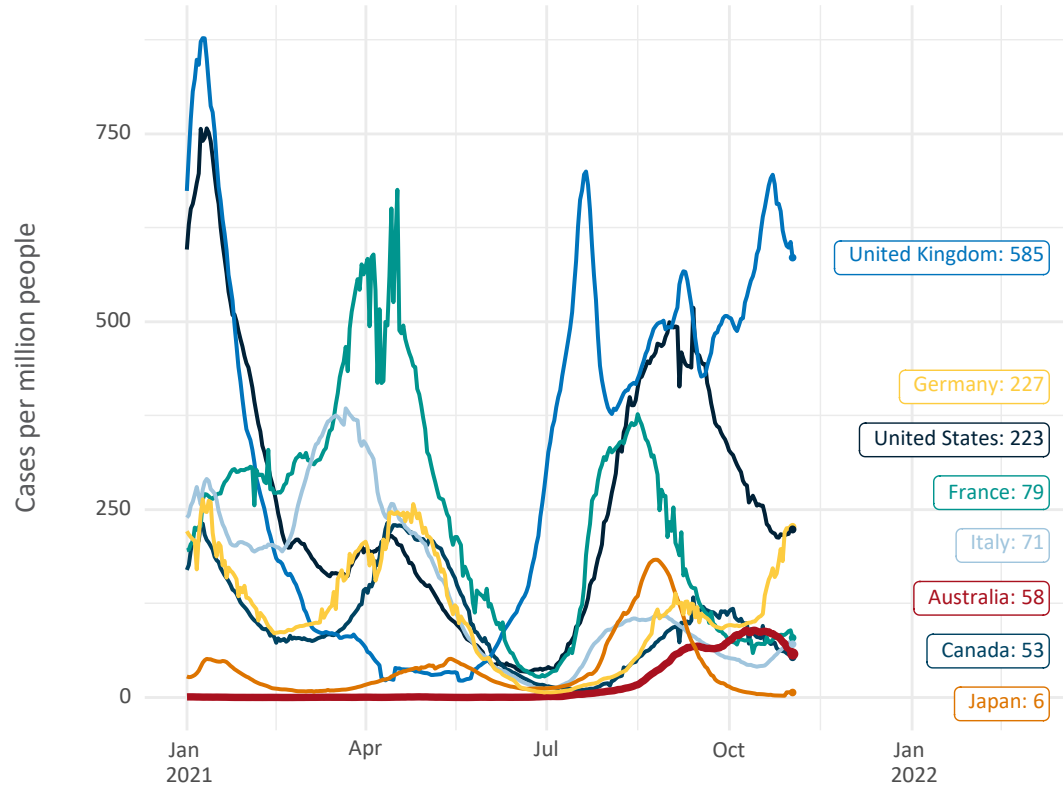


Note: From 15 September 2021, data for Australia includes all doses administered to people 12 and over. Prior to 15 September, data was for 16 and over  
 Source: Department of Health (Australia), Our World in Data (international)  
 Latest data: 03 November

Data as at:  
03 Nov 2021

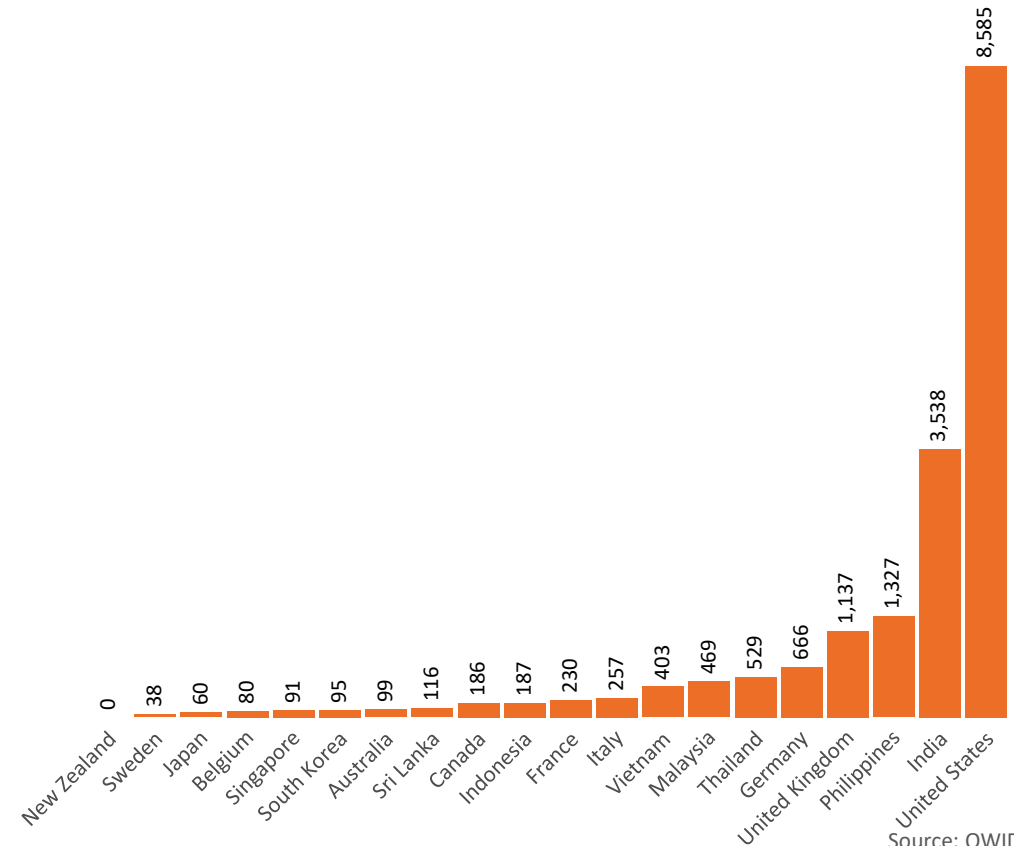
# International data – COVID-19

New daily cases per million in 2021, Australia and G7 countries  
Smoothed - 7 day average



Source: OWID  
Data downloaded: 04 Nov 2021 08:47  
Latest data: 02 Nov 2021

COVID-19 deaths in past 7 days - Australia and select countries

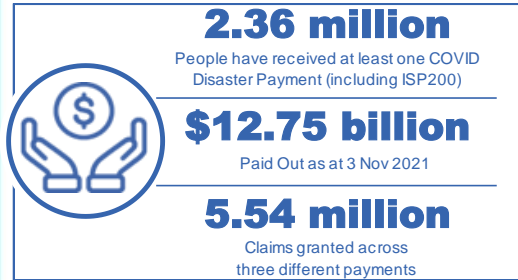


Source: OWID  
Data downloaded: 04 Nov 2021 08:47  
Latest data: 02 Nov 2021



Data as at midnight:  
3 Nov 2021

# Pandemic Response Payments (Current)



<b>COVID Disaster Payment:</b>	5.37 million claims received - 2.18 million individuals paid a total of \$12.32 billion.
<b>\$200 Income Support Payment:</b>	324,000 claims received - 181,000 individuals paid a total of \$264.23 million.
<b>Pandemic Leave Disaster Payment:</b>	119,000 claims received - 102,000 individuals paid a total of \$165.62 million.

**THREE PAYMENTS AVAILABLE**

**COVID Disaster Payment**

assisting during a lockdown event in a Commonwealth hotspot.

**Income Support Payment \$200**

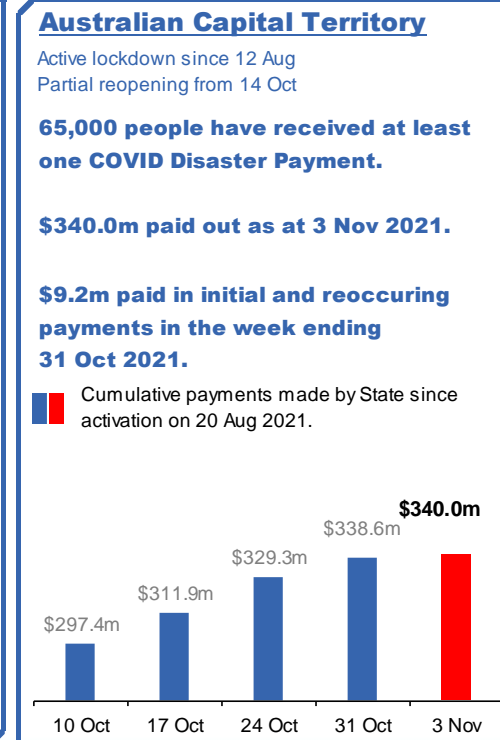
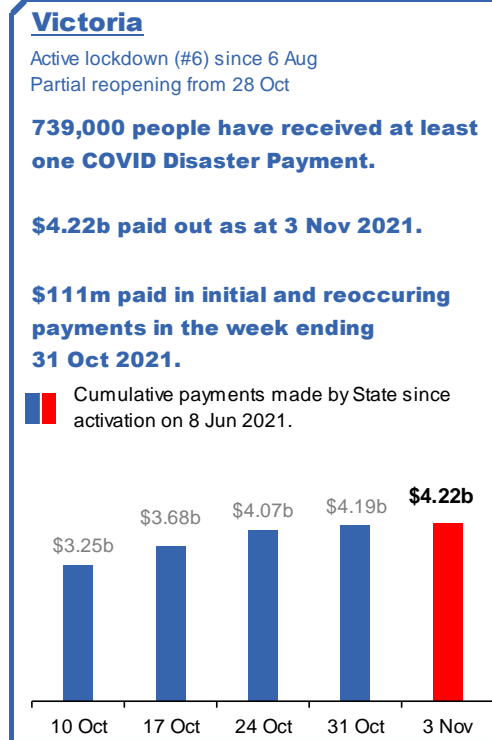
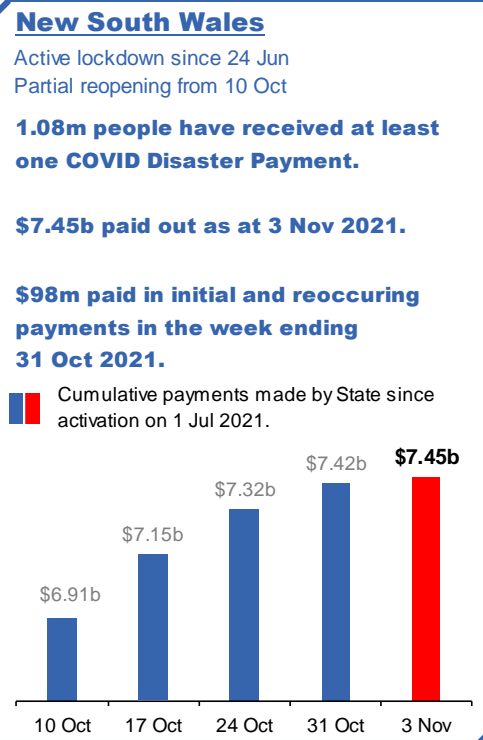
for income support recipients who lost at least 8 hours of work.

**Pandemic Leave Disaster Payment**

for those who have to self-isolate, quarantine or care.

For more information visit:  
[servicesaustralia.gov.au](https://servicesaustralia.gov.au)

## CURRENT COVID-19 DISASTER PAYMENTS



Data as at midnight:  
3 Nov 2021

# Pandemic Response Payments (Closed Events)

## CLOSED COVID-19 DISASTER PAYMENTS

### Northern Territory

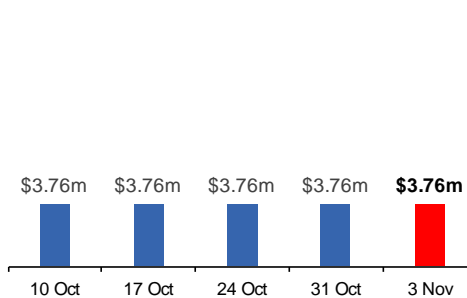
Lockdown from 18 – 20 Jul  
Claiming period ended 13 Sep

**5,805 people have received at least one COVID Disaster Payment.**

**\$3.76m paid out as at 3 Nov 2021.**

**There were no additional payments made in the week ending 31 Oct 2021.**

Cumulative payments made by State since activation on 25 Aug 2021.



### Queensland

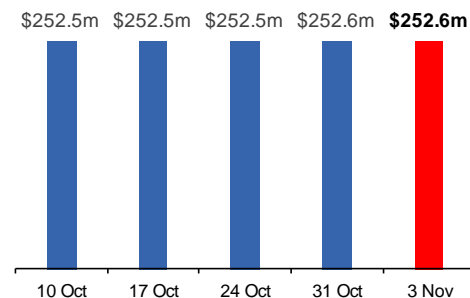
Lockdown from 31 Jul – 11 Aug  
Claiming period ended 28 Aug

**196,000 people have received at least one COVID Disaster Payment.**

**\$252.6m paid out as at 3 Nov 2021.**

**\$12,000 paid in initial and reoccurring payments in the week ending 31 Oct 2021.**

Cumulative payments made by State since activation on 7 Aug 2021.



### South Australia

Lockdown from 21 – 27 Jul  
Claiming period ended 17 Aug

**86,000 people have received at least one COVID Disaster Payment.**

**\$48.2m paid out as at 3 Nov 2021.**

**There were no additional payments made in the week ending 31 Oct 2021.**

Cumulative payments made by State since activation on 28 Jul 2021.

