



**Australian Government**  
**Operation COVID Shield**

# COVID-19 Vaccine Roll-out

30 November 2021

Data as at:  
29 Nov 2021

## Total vaccine doses



**39,201,853** total vaccine doses administered nationally as at 29 November

**+95,247** recorded in the last 24 hours



**19,056,282**

people have had at least one dose

**92.4%**

of people over the age of 16 have had at least one dose



**17,938,056**

people are fully vaccinated

**87.0%**

of people over the age of 16 are fully vaccinated



**430,584**

people over the age of 16 who have received more than two doses

**NSW**  
**12,934,914**  
(+13,713 daily increase)

**VIC**  
**10,681,153**  
(+16,552 daily increase)

**QLD**  
**7,196,060**  
(+27,719 daily increase)

**WA**  
**3,631,147**  
(+18,785 daily increase)

**TAS**  
**844,738**  
(+2,594 daily increase)

**SA**  
**2,575,294**  
(+11,931 daily increase)

**ACT**  
**957,776**  
(+1,926 daily increase)

**NT**  
**380,771**  
(+2,027 daily increase)

\*Administration state breakdown indicates state in which a vaccine was administered

\*\*Overall dose count includes instances of more than two doses per person in a small number of cases.

Data as at:  
29 Nov 2021

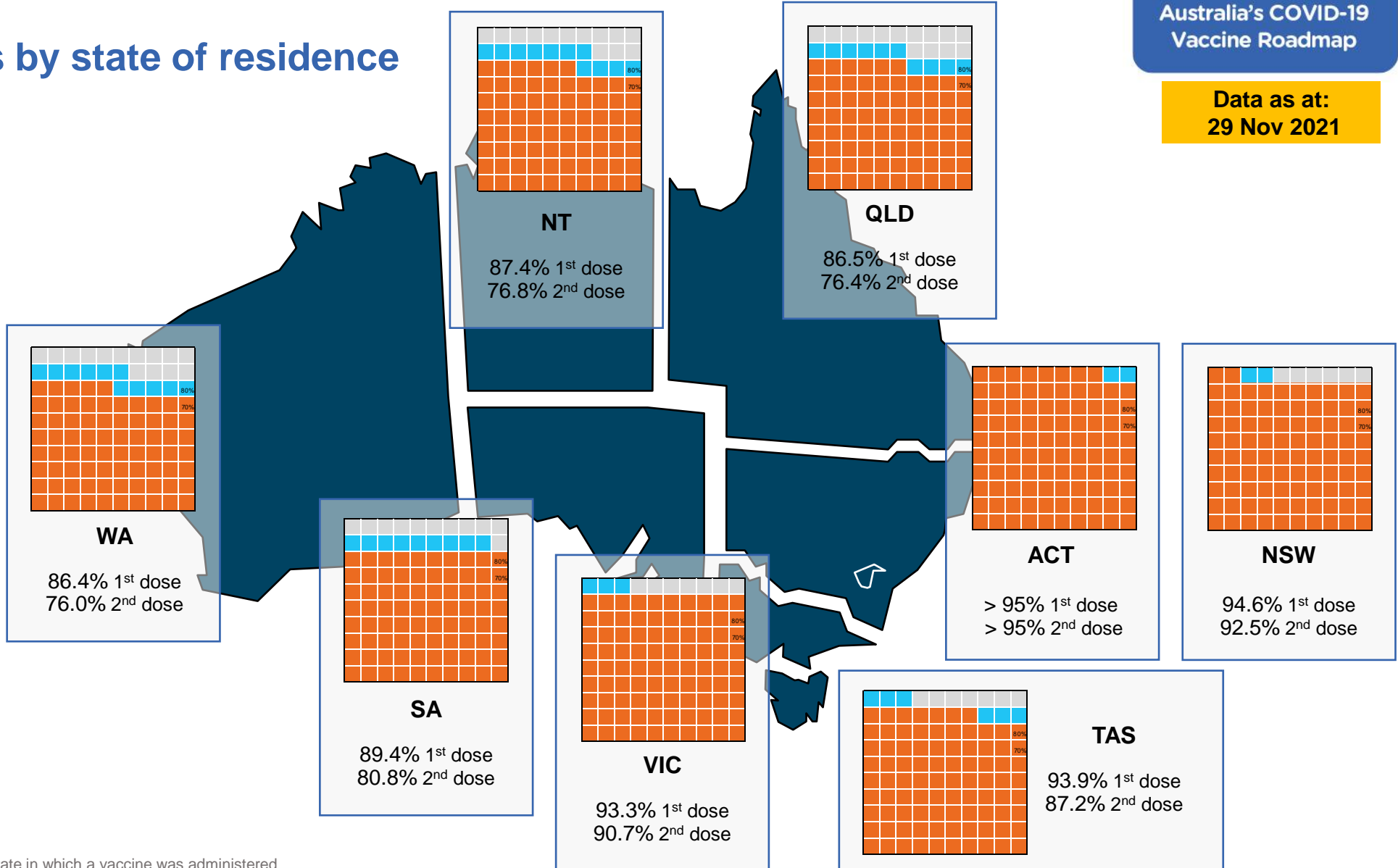
# Vaccinations by state of residence

## First doses

Age	Today	4 weeks ago	8 weeks ago
16+	92.4%	88.8%	80.8%
50+	>95%	>95%	91.2%
70+	>95%	>95%	>95%

## Fully vaccinated

Age	Today	4 weeks ago	8 weeks ago
16+	87.0%	78.6%	58.4%
50+	93.7%	87.2%	74.5%
70+	>95%	91.7%	81.7%



\*Residential state may differ from the state in which a vaccine was administered

## Commonwealth and Jurisdiction vaccine doses administered

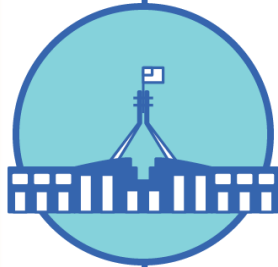
Data as at:  
29 Nov 2021



**39,201,853** total vaccine doses administered nationally as at 29 November  
+ **95,247** recorded in the last 24 hours



**15,915,080** doses administered by state and territory facilities  
+ **26,443** recorded in the last 24 hours



**23,286,773** doses administered by commonwealth facilities  
+ **68,804** recorded in the last 24 hours  
**22,171,606** total vaccine doses administered in primary care settings  
**1,115,167** total vaccine doses administered in aged care and disability settings

NSW	Jurisdictions	Commonwealth
Cumulative	4,211,832	8,723,082
Daily increase	2,342	11,371

VIC	Jurisdictions	Commonwealth
Cumulative	4,758,154	5,922,999
Daily increase	3,759	12,793

QLD	Jurisdictions	Commonwealth
Cumulative	2,903,832	4,292,228
Daily increase	6,989	20,730

WA	Jurisdictions	Commonwealth
Cumulative	1,660,510	1,970,637
Daily increase	5,348	13,437

TAS	Jurisdictions	Commonwealth
Cumulative	459,148	385,590
Daily increase	797	1,797

SA	Jurisdictions	Commonwealth
Cumulative	1,213,465	1,361,829
Daily increase	4,733	7,198

ACT	Jurisdictions	Commonwealth
Cumulative	482,853	474,923
Daily increase	1,318	608

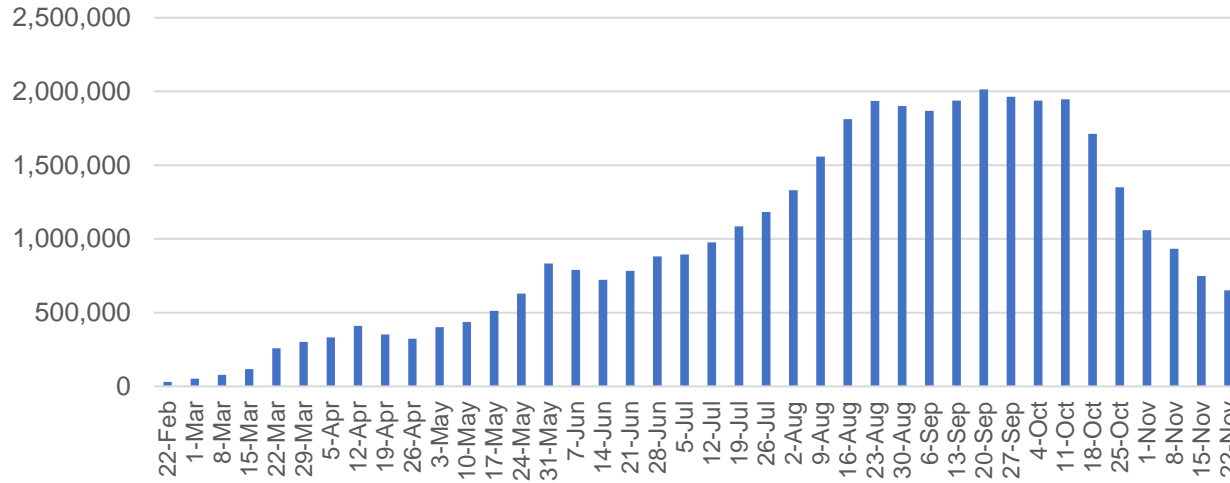
NT	Jurisdictions	Commonwealth
Cumulative	225,286	155,485
Daily increase	1,157	870

# Vaccine milestone charts

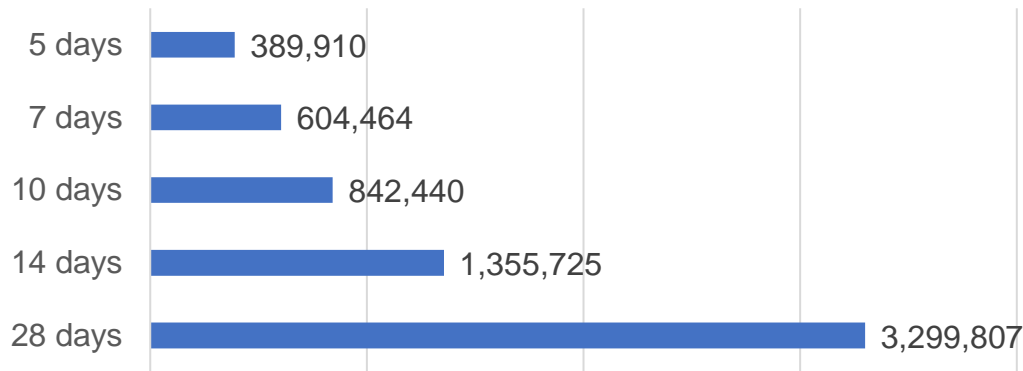
Data as at:  
29 Nov 2021

Australia's COVID-19  
Vaccine Roadmap

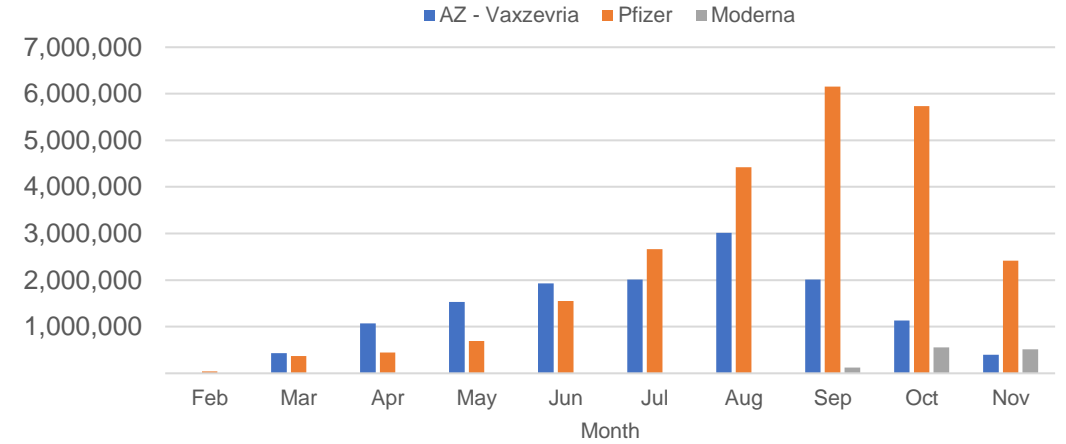
Doses Administered by Week



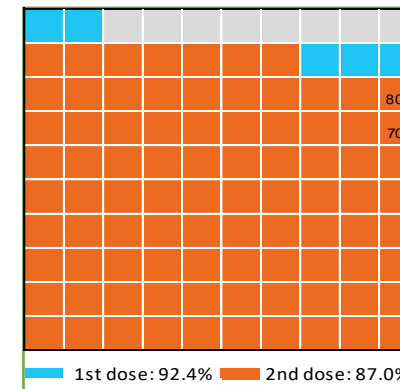
Doses Reported



Doses by administration month and vaccine type



Eligible population percentage coverage



\*Sourced from the Australian Immunisation Register.

\*Each square represents 1% of the national population. Squares are filled as milestones are achieved.

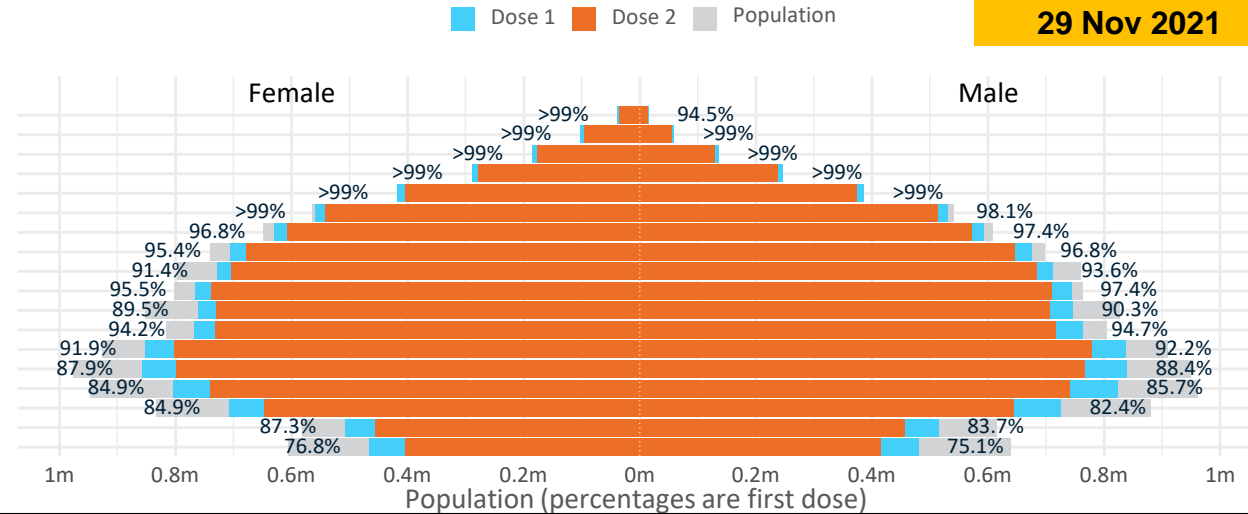
# Doses by age and sex

First and second doses by age and sex

Data as at:  
29 Nov 2021

	16+	50+	70+	12-15
Dose 1	92.42% (19,056,282 doses / 20,619,959 people)	97.38% (8,520,151 doses / 8,749,703 people)	>99% (2,964,945 doses / 2,934,706 people)	75.95% (944,862 doses / 1,243,990 people)
Dose 2	86.99% (17,938,056 doses / 20,619,959 people)	93.69% (8,197,563 doses / 8,749,703 people)	97.29% (2,855,140 doses / 2,934,706 people)	66.00% (821,019 doses / 1,243,990 people)

Age	Dose 1	Dose 2
95+	52,523 (>99%)	47,936 (90.6%)
90-94	161,506 (>99%)	151,288 (95.5%)
85-89	320,911 (>99%)	305,095 (96.5%)
80-84	535,902 (>99%)	515,803 (97.6%)
75-79	803,442 (>99%)	778,411 (>99%)
70-74	1,090,661 (98.7%)	1,056,607 (95.6%)
65-69	1,223,208 (97.2%)	1,179,018 (93.7%)
60-64	1,381,768 (96.2%)	1,325,216 (92.2%)
55-59	1,439,875 (92.6%)	1,389,411 (89.3%)
50-54	1,510,355 (96.5%)	1,448,778 (92.6%)
45-49	1,508,759 (90.0%)	1,438,187 (85.8%)
40-44	1,532,719 (94.6%)	1,449,955 (89.5%)
35-39	1,693,746 (92.3%)	1,583,615 (86.3%)
30-34	1,703,949 (88.6%)	1,570,558 (81.6%)
25-29	1,636,505 (85.8%)	1,488,094 (78.1%)
20-24	1,438,248 (84.0%)	1,295,994 (75.7%)
16-19	1,022,205 (85.5%)	914,090 (76.4%)
12-15	944,862 (76.0%)	821,019 (66.0%)

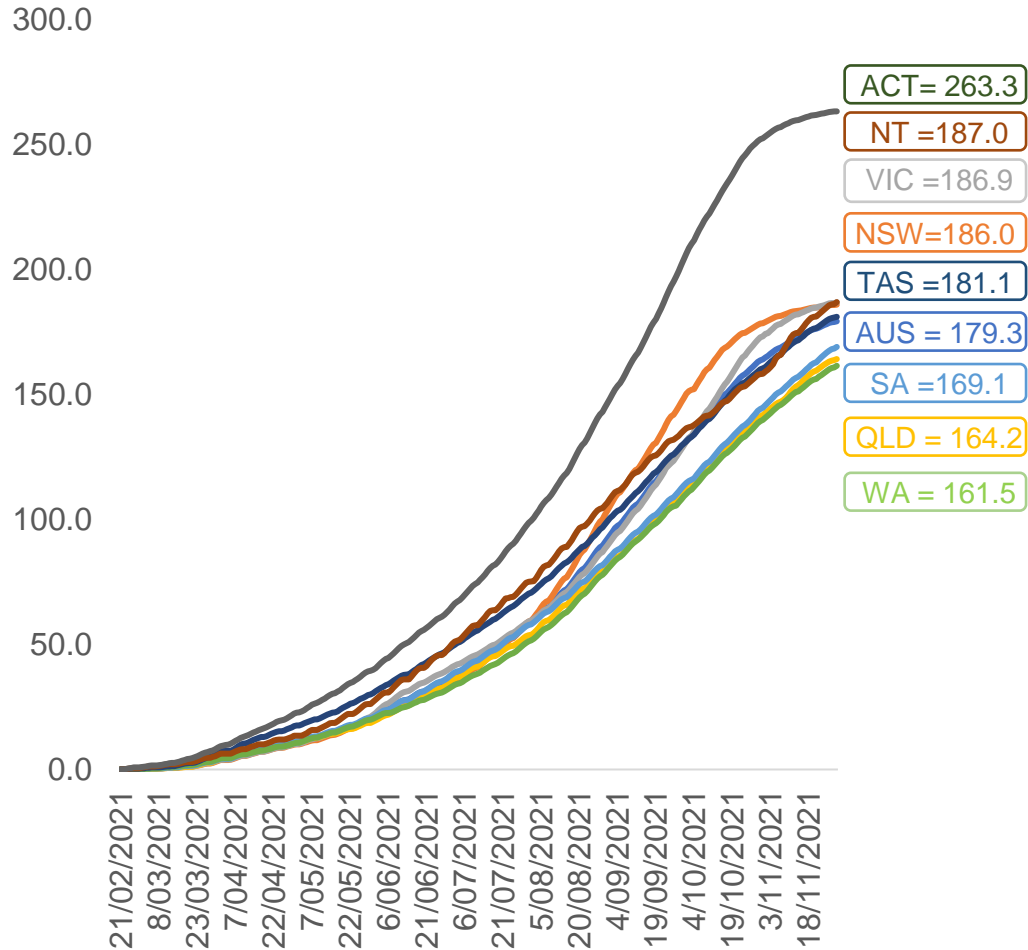


	AUS	ACT	NSW	NT	QLD	SA	TAS	VIC	WA
16 and over - dose 1	19,056,282	345,574	6,208,191	166,547	3,555,945	1,287,299	413,321	5,046,214	1,827,093
16 and over - dose 2	17,938,056	338,356	6,072,809	146,397	3,143,789	1,164,534	383,972	4,906,676	1,606,913
16 and over - population	20,619,959*	344,037	6,565,651	190,571	4,112,707	1,440,400	440,172	5,407,574	2,114,978
16 and over % with dose 1	92.42%	>99%	94.56%	87.39%	86.46%	89.37%	93.90%	93.32%	86.39%
16 and over % with dose 2	86.99%	98.35%	92.49%	76.82%	76.44%	80.85%	87.23%	90.74%	75.98%
50 and over - dose 1	8,520,151	133,735	2,767,221	55,925	1,651,632	641,824	211,846	2,168,964	831,992
50 and over - dose 2	8,197,563	131,530	2,720,238	51,949	1,550,654	601,745	200,783	2,118,558	772,225
50 and over - population	8,749,703	127,802	2,807,793	62,280	1,758,855	674,384	220,036	2,211,211	885,370
50 and over % with dose 1	97.38%	>99%	98.56%	89.80%	93.90%	95.17%	96.28%	98.09%	93.97%
50 and over % with dose 2	93.69%	>99%	96.88%	83.41%	88.16%	89.23%	91.25%	95.81%	87.22%
70 and over - dose 1	2,964,945	43,595	977,574	11,455	569,340	240,064	77,822	747,687	275,664
70 and over - dose 2	2,855,140	42,701	957,269	10,727	540,665	225,990	73,531	726,804	258,379
70 and over - population	2,934,706	39,946	962,606	12,343	577,767	240,514	77,155	743,519	280,281
70 and over % with dose 1	>99%	>99%	>99%	92.81%	98.54%	>99%	>99%	>99%	98.35%
70 and over % with dose 2	97.29%	>99%	>99%	86.91%	93.58%	93.96%	95.30%	97.75%	92.19%
12 to 15 - dose 1	944,862	19,694	317,262	9,394	173,020	56,425	19,190	267,284	75,265
12 to 15 - dose 2	821,019	18,858	299,388	7,028	134,723	41,944	15,768	243,441	54,439
12 to 15 - population	1,243,990	19,693	390,330	13,060	270,146	82,747	26,308	308,611	132,869
12 to 15 % with dose 1	75.95%	>99%	81.28%	71.93%	64.05%	68.19%	72.94%	86.61%	56.65%
12 to 15 % with dose 2	66.00%	95.76%	76.70%	53.81%	49.87%	50.69%	59.94%	78.88%	40.97%

\*National population will not equal sum of listed jurisdictions due to a small number of people counted in national population residing in some 'other' territories. Sum of state doses will not add to national total as some records are unable to be geocoded to a State or Territory.  
Doses sourced from Australian Immunisation Register, population from ABS ERP June 2020

# Vaccinations by location

Cumulative total doses administered vs eligible state populations\*

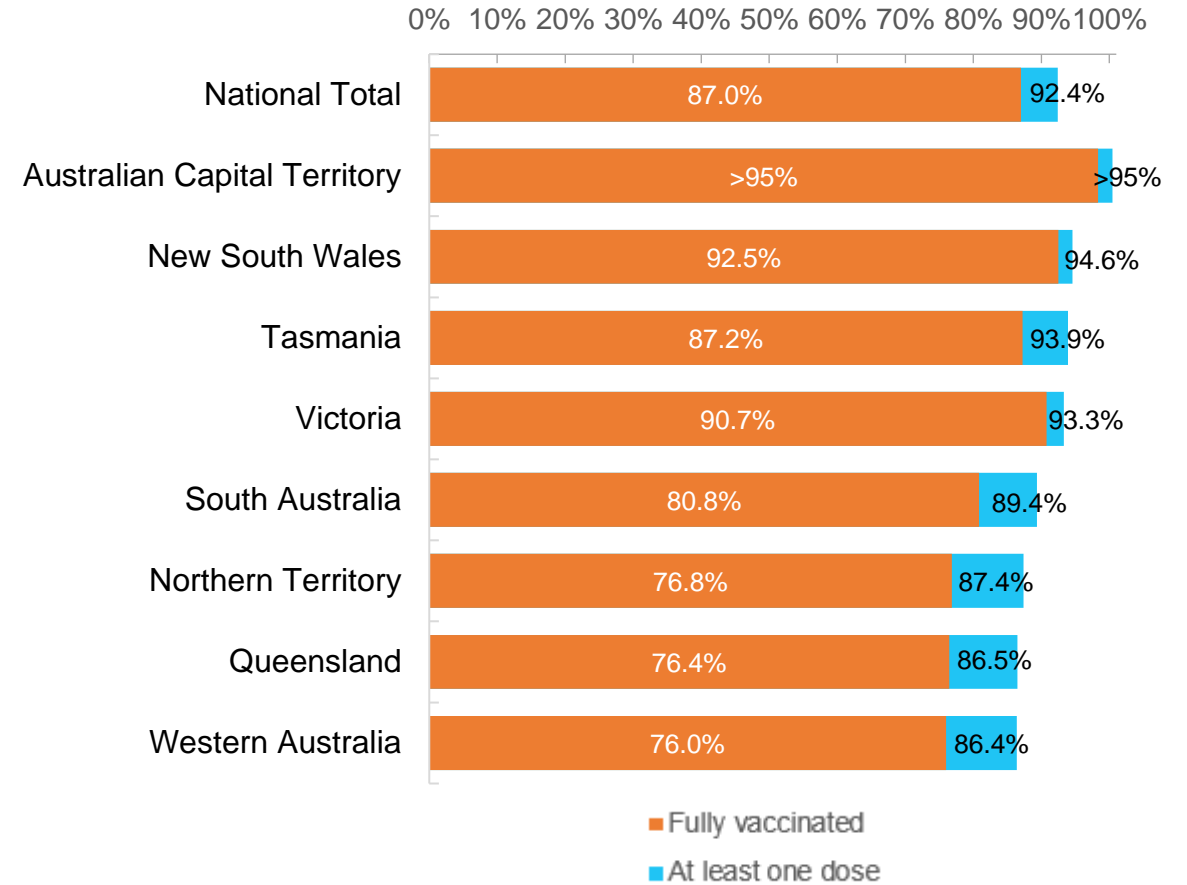


\*Not an indication of percentage vaccinated, numbers will exceed 100 due to multiple doses required per person of the population. All doses are included, including those for the 12-15 cohort, and are based on vaccination provider location.

Data as at:  
29 Nov 2021

Australia's COVID-19  
Vaccine Roadmap

First and Second Doses by state of residence



# Aboriginal and Torres Strait Islander peoples

## Number of people vaccinated

Data as at:  
23 Nov 2021  
Updated weekly



**381,625**

people over the age of 16  
have had at least one dose

**71.9%**

of people over the age of 16  
have had at least one dose



**320,060**

people over the age of 16  
are fully vaccinated

**60.2%**

of people over the age of 16 are  
fully vaccinated



**37,605  
(52.4%)**

people aged 12-15 years  
have had at least one dose

### 173 Aboriginal community controlled health services (ACCHS)

0#	50	27	41	12	3	21	19
<b>ACT</b>	<b>NSW</b>	<b>NT</b>	<b>QLD</b>	<b>SA</b>	<b>TAS</b>	<b>VIC</b>	<b>WA</b>

Medicare Address State <sup>##</sup>	Individuals Dose 1	Individuals Dose 1 %	Individuals Dose 2	Individuals Dose 2 %
Australian Capital Territory	4,887	89.6%	4,643	85.0%
New South Wales	136,135	84.9%	128,941	80.3%
Northern Territory	35,557	77.3%	26,333	56.9%
Queensland	92,212	64.0%	69,983	48.4%
South Australia	16,558	64.5%	12,945	50.2%
Tasmania	13,434	77.9%	12,005	69.3%
Victoria	35,134	86.8%	32,570	80.3%
Western Australia	34,563	53.8%	23,620	36.6%
Unknown/Other Territories	13,145	48.7%	9,020	33.3%
<b>Totals</b>	<b>381,625</b>	<b>71.9%</b>	<b>320,060</b>	<b>60.2%</b>

Source: Australian Immunisation Register

\*Identifying as Aboriginal and Torres Strait Islander is optional and the estimated population may be under reported.  
 \*\*Includes all Aboriginal and Torres Strait Islander peoples who have received a vaccination, not limited to those administered in an ACCHS setting  
 #ACCHS in the ACT are currently operating as a Commonwealth Vaccine Clinics so not included to avoid double counting  
 ##The above table includes all identified Aboriginal and Torres Strait Islander people who are aged 16 and above by their state of residence.

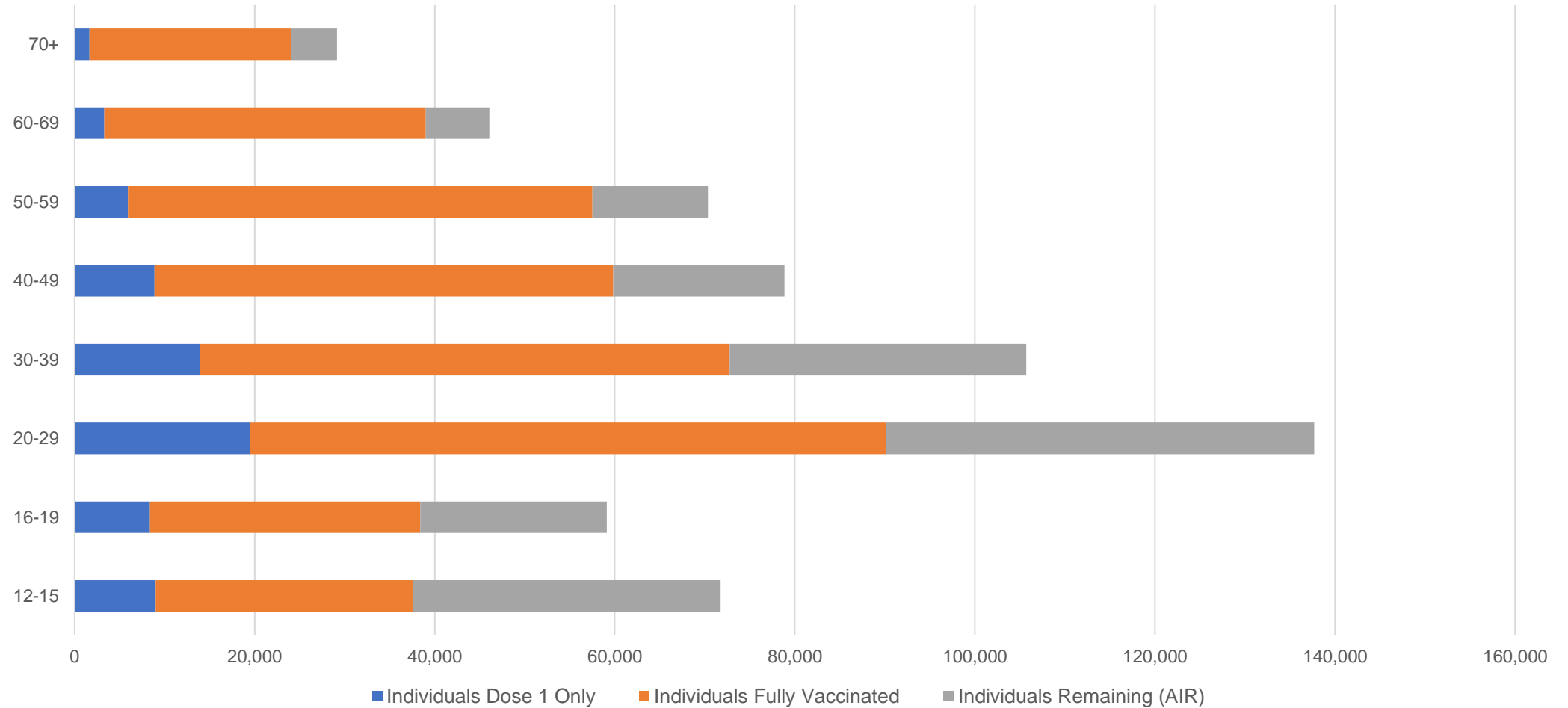


# Aboriginal and Torres Strait Islander peoples

## Number of people vaccinated by age

Data as at:  
23 Nov 2021  
Updated weekly

Australia's COVID-19  
Vaccine Roadmap



Source: Australian Immunisation Register

Data as at:  
29 Nov 2021

## Commonwealth primary care



### Primary care vaccine administration sites

<b>5,643</b>	<b>137</b>	<b>172</b>	<b>3,453</b>
GPs	CVCs	ACCHS	Pharmacies



**22,171,606** total vaccine doses administered  
primary care settings as at 29 November  
**+ 67,593** recorded in the last 24 hours

### Primary care vaccinations by provider type

	Doses administered	Daily increase	7 day increase
<b>General Practice*</b> includes other Commonwealth	19,834,667	46,620	268,308
<b>Pharmacy</b>	2,336,939	20,973	126,750



**157,496** doses administered to persons residing in other territories or with missing residential information

\*General practice includes Commonwealth Vaccination Clinics, Aboriginal Community Health Centres, Royal Flying Doctor Service and other Commonwealth vaccination facilities

Source: Australian Immunisation Register

Data as at:  
29 Nov 2021

# Commonwealth aged care and disability doses administered



**1,115,167** (+ 1,211 last 24 hours)

Total vaccine doses administered in aged care and disability facilities as at 29 November

Number of doses administered as part of the Commonwealth aged and disability care rollout

**NSW**  
**521,669**  
(+262 daily increase)

**VIC**  
**207,046**  
(+214 daily increase)

**QLD**  
**170,400**  
(+281 daily increase)

**WA**  
**79,028**  
(+69 daily increase)

**TAS**  
**19,309**  
(+5 daily increase)

**SA**  
**70,401**  
(+326 daily increase)

**ACT**  
**14,255**  
(+0 daily increase)

**NT**  
**6,243**  
(+8 daily increase)

**26,816**

doses administered to persons residing in other territories or with missing residential information

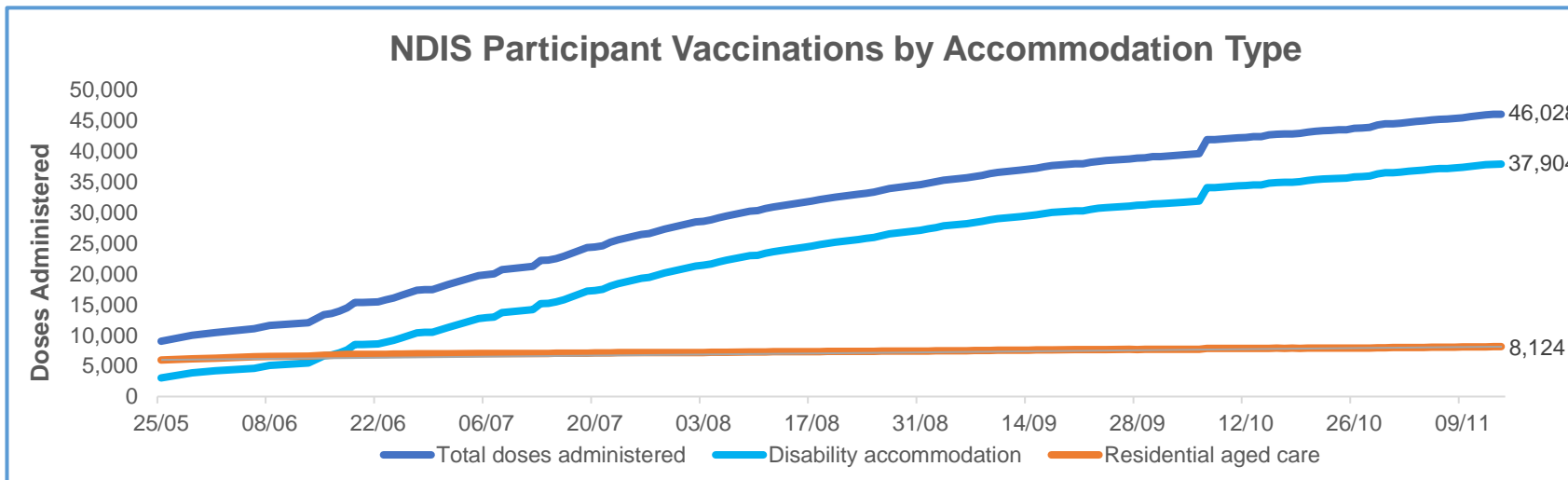
\*Sourced from the Australian Immunisation Register. Includes all persons vaccinated at participating residential aged care, disability and related industry settings.  
\*\*State level breakdown indicates the residential location and may not align to the state in which the vaccination occurred.

Source: Australian Immunisation Register

Data as at:  
15 Nov 2021\*

# Vaccination rate of people with disability and the disability workforce

## Phase 1a – People with disability living in shared accommodation



	Total people with at least one dose	People fully vaccinated	Total number of individuals in cohort	Total doses administered	% People with at least one dose	% People fully vaccinated
NDIS participants living in shared accommodation **	23,650	22,378	27,603	46,028	85.7%	81.1%
NDIS screened workers ***	207,058	194,060	242,348	401,118	85.4%	80.1%



\* Updates are available Monday to Friday on participants, and bi-weekly for workers, numbers may be up to four days old.

\*\* Shared accommodation means two or more people with disability living in shared residential accommodation and NDIS participants living in Residential Aged Care accommodation as per the eligibility criteria of Phase 1a.

\*\*\* Total number of workers within the NDIS Commission Worker Screening database who have ever been successfully screened and linked to an NDIS registered provider or participant.

Source: Linkage between National Disability Insurance Agency data, NDIS Quality and Safeguards Commission data and the Australian Immunisation Register.

## Residential aged care vaccination rollout

**Residential aged care facilities status**

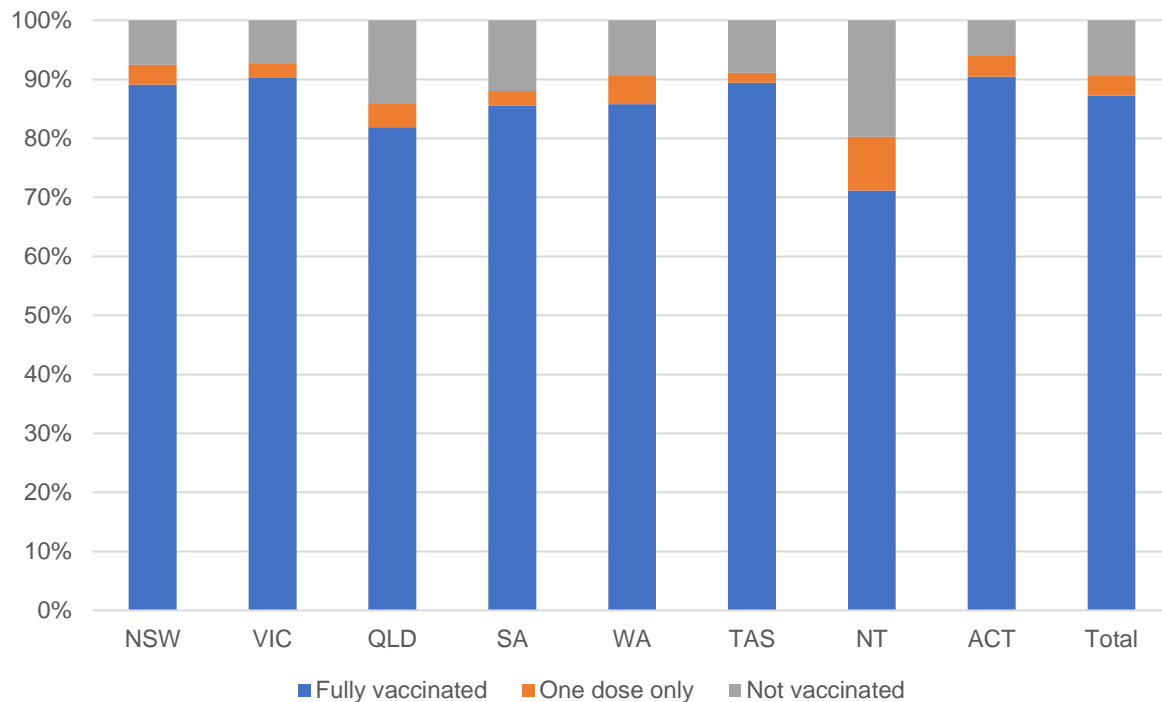
**100%**  
Commonwealth facilities visited (2,561 planned sites)

**161,627**  
People fully vaccinated

**167,818**  
People with at least one dose

**Data as at: 29 Nov 2021**

### Aged care resident vaccinations



### Aged care worker vaccinations

Jurisdictions	Total workers with at least one dose	Workers fully vaccinated	% Workers with at least one dose	% Workers fully vaccinated
NSW	78,322	78,212	99.7%	99.6%
VIC	71,181	70,846	99.9%	99.4%
QLD	49,086	48,796	100.0%	99.4%
SA	27,552	26,999	100.0%	98.0%
WA	23,701	23,494	100.0%	99.1%
TAS	7,658	7,462	99.8%	97.2%
NT	847	842	100.0%	99.4%
ACT	2,994	2,976	100.0%	99.4%
<b>Total</b>	<b>261,341</b>	<b>259,627</b>	<b>99.9%</b>	<b>99.2%</b>

Source: My Aged Care Portal staff vaccination progress

\*\*Resident vaccination information is reported manually by service providers

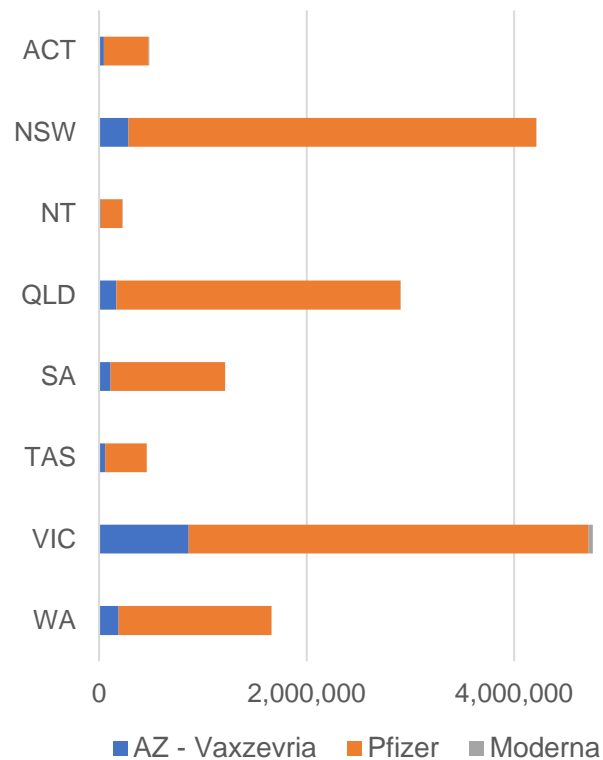
\*Status updates are provided by facilities at least once per week. Reporting is updated Monday to Friday to encompass different facility updates being made on different days.

Data is sourced directly from Aged Care Service Providers and is not drawn or closely aligned with data from AIR due to inconsistencies and potential lags in uploading of records.

Data as at:  
29 Nov 2021

# Jurisdiction administered

Total vaccine doses administered in State and Territory clinics as at 29 November



**15,915,080** total vaccine doses administered in State and Territory clinics as at 29 November  
 + **26,443** recorded in the last 24 hours  
 + **191,706** recorded in the last 7 days

**NSW**  
**4,211,832**  
 (+2,342 daily increase)

**VIC**  
**4,758,154**  
 (+3,759 daily increase)

**QLD**  
**2,903,832**  
 (+6,989 daily increase)

**WA**  
**1,660,510**  
 (+5,348 daily increase)

**TAS**  
**459,148**  
 (+797 daily increase)

**SA**  
**1,213,465**  
 (+4,733 daily increase)

**ACT**  
**482,853**  
 (+1,318 daily increase)

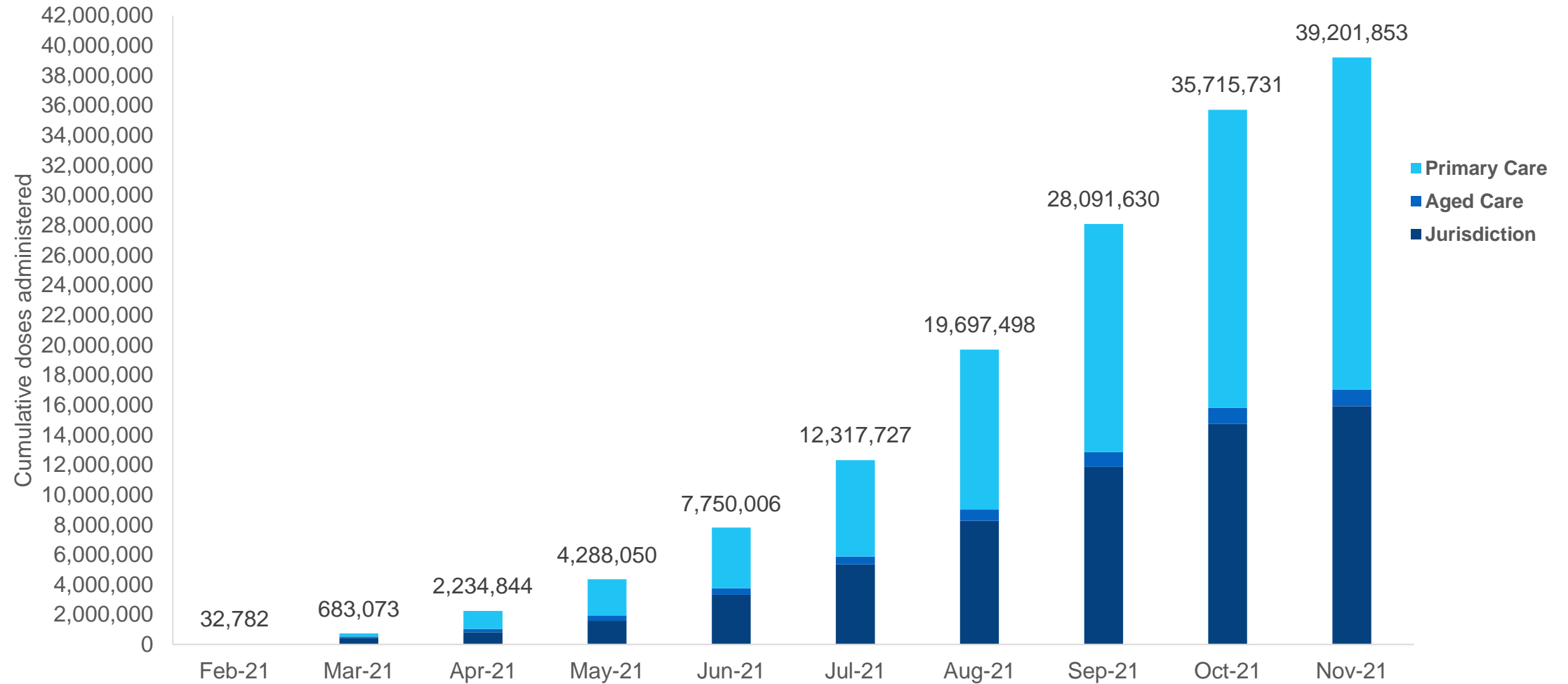
**NT**  
**225,286**  
 (+1,157 daily increase)

\*Sourced from the Australian Immunisation Register and self-reported data. Numbers are calculated as difference in daily cumulative reported numbers to allow for historical corrections in all self-reported data sources.

Source: Australian Immunisation Register

# Cumulative doses administered by channel

Data as at:  
29 Nov 2021



Source: Australian Immunisation Register

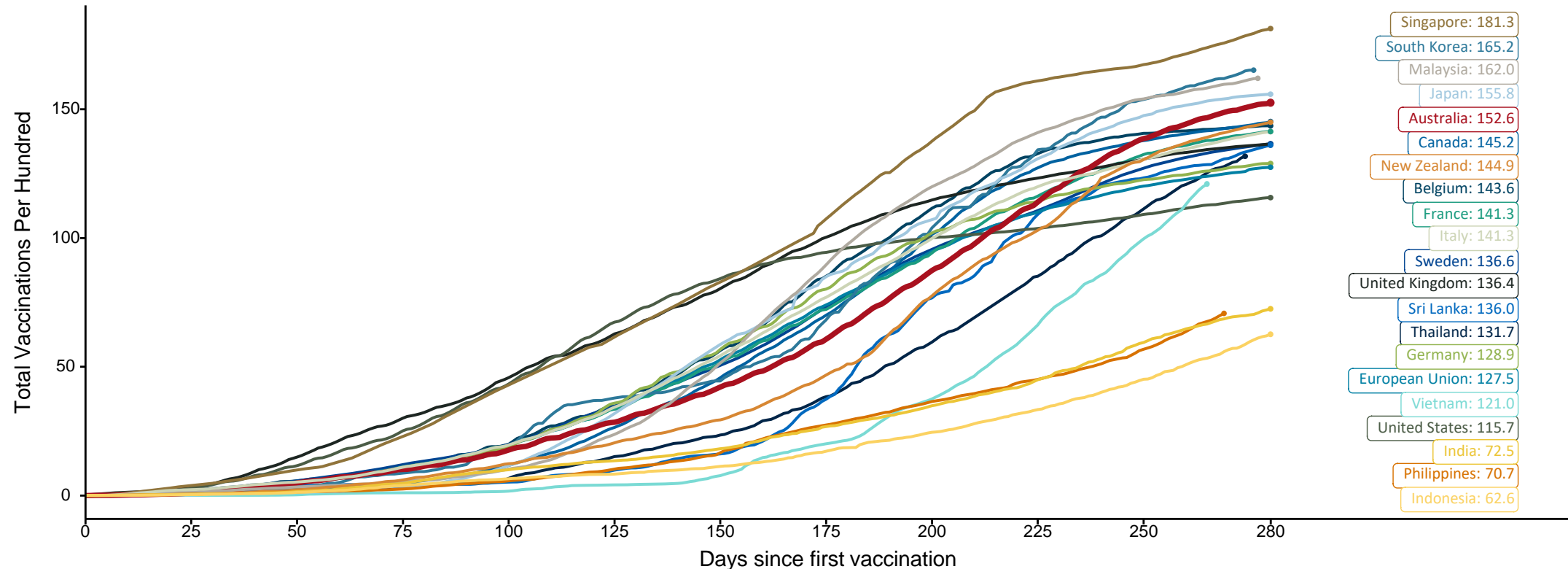


# Doses at equivalent stages of rollout (Day 280)

Data as at:  
29 Nov 2021

The x-axis is truncated at the length of Australia's vaccination program. Countries with intermittent reporting have had their doses per 100 imputed to Australia's current stage of rollout. Israel excluded as it is beyond scale of the graph

Cumulative doses administered (29 Nov): **39,201,853**



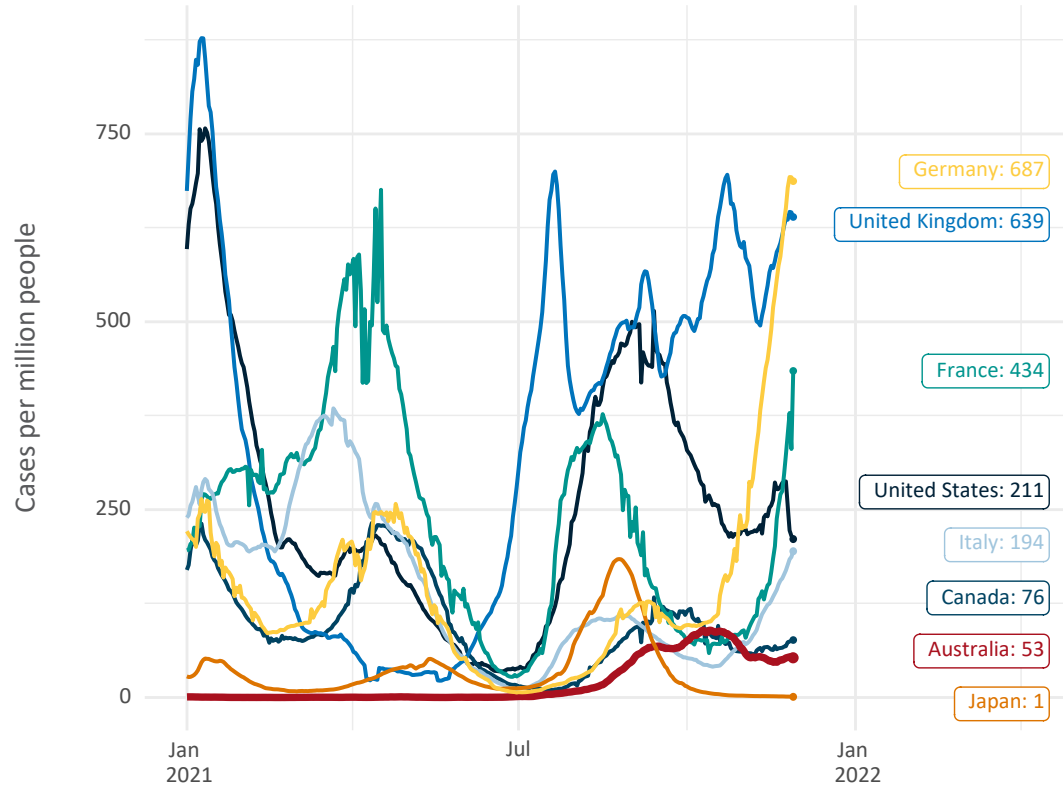
Note: From 15 September 2021, data for Australia includes all doses administered to people 12 and over. Prior to 15 September, data was for 16 and over  
 Source: Department of Health (Australia), Our World in Data (international)  
 Latest data: 29 November



Data as at:  
29 Nov 2021

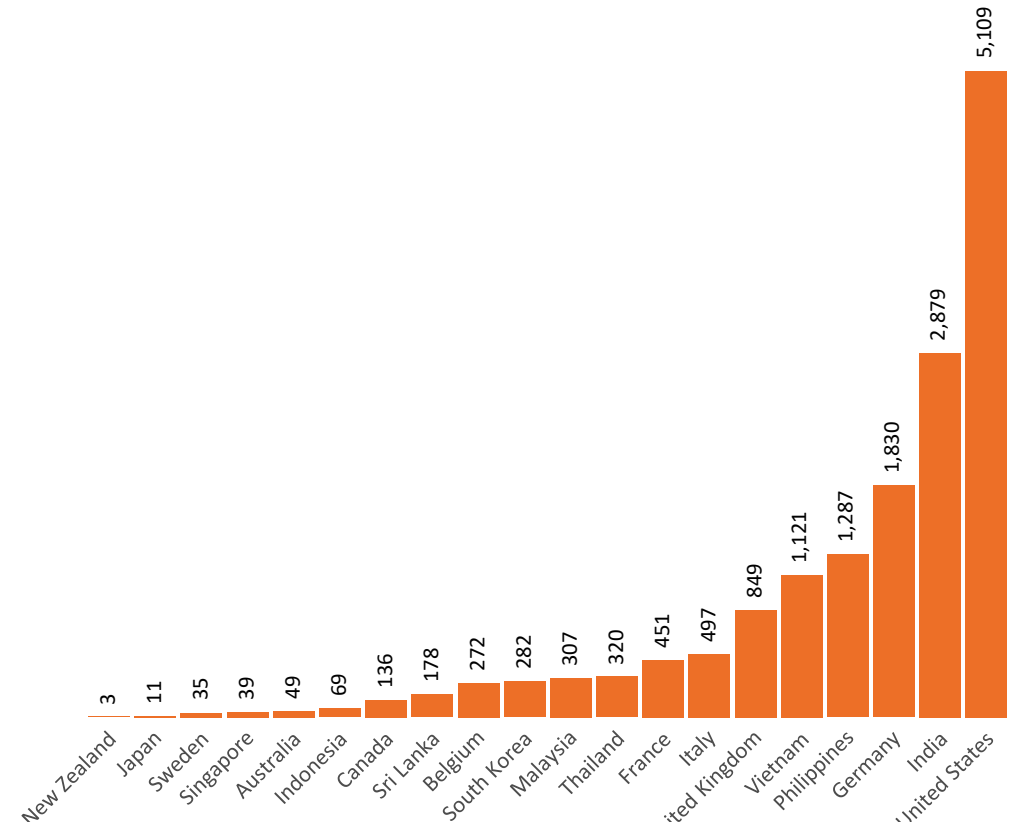
# International data – COVID-19

New daily cases per million in 2021, Australia and G7 countries  
Smoothed - 7 day average



Source: OWID  
Data downloaded: 30 Nov 2021 08:20  
Latest data: 28 Nov 2021

COVID-19 deaths in past 7 days - Australia and select countries



Source: OWID  
Data downloaded: 30 Nov 2021 08:20  
Latest data: 28 Nov 2021

Data as at midnight:  
29 Nov 2021

# Pandemic Response Payments



**2.38 million**  
People have received at least one COVID Disaster Payment (including ISP200)

**\$13.05 billion**  
Paid Out as at 29 Nov 2021


**6.10 million**  
Claims granted across three different payments



**94%**  
of Claims Received Digitally



<b>COVID Disaster Payment:</b>	5.88 million claims received - 2.19 million individuals paid a total of \$12.59 billion.
<b>\$200 Income Support Payment:</b>	351,000 claims received - 183,000 individuals paid a total of \$268.80 million.
<b>Pandemic Leave Disaster Payment:</b>	141,000 claims received - 120,000 individuals paid a total of \$197.80 million.



**THREE PAYMENTS AVAILABLE**

**COVID Disaster Payment**  
assisting during a lockdown event in a Commonwealth hotspot.

**Income Support Payment \$200**  
for income support recipients who lost at least 8 hours of work.

**Pandemic Leave Disaster Payment**  
for those who have to self-isolate, quarantine or care.

For more information visit:  
[servicesaustralia.gov.au](https://servicesaustralia.gov.au)

## COVID-19 DISASTER PAYMENTS

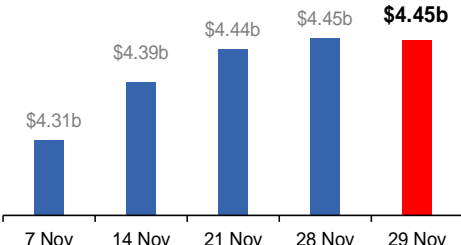
**Victoria**  
Lockdown (#6) since 6 Aug to 28 Oct  
Claiming period ends 9 Dec

**745,000 people have received at least one COVID Disaster Payment.**

**\$4.45b paid out as at 29 Nov 2021.**

**\$15m paid in initial and reoccurring payments in the week ending 28 Nov 2021.**

Cumulative payments made by State since activation on 8 Jun 2021.



Date	Cumulative Payments (\$b)
7 Nov	\$4.31b
14 Nov	\$4.39b
21 Nov	\$4.44b
28 Nov	\$4.45b
29 Nov	\$4.45b

**Northern Territory**  
Lockdown (#3) from 16 Nov to 22 Nov  
Claiming period ends 27 Dec

**6,700 people have received at least one COVID Disaster Payment.**

**\$4.9m paid out as at 29 Nov 2021.**

**\$678,000 paid in initial payments in the week ending 28 Nov 2021.**

Cumulative payments made by State since activation on 25 Aug 2021.



Date	Cumulative Payments (\$m)
7 Nov	\$3.8m
14 Nov	\$3.9m
21 Nov	\$4.1m
28 Nov	\$4.8m
29 Nov	\$4.8m

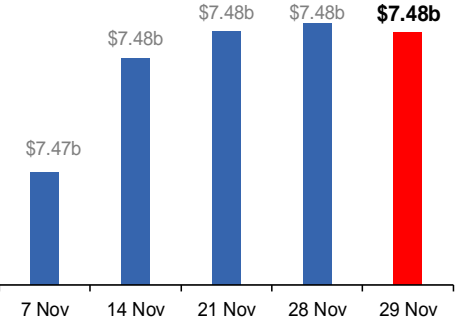
**New South Wales**  
Lockdown from 24 Jun to 10 Oct  
Claiming period ended 27 Nov

**1.08m people have received at least one COVID Disaster Payment.**

**\$7.48b paid out as at 29 Nov 2021.**

**\$754,000 paid in initial and reoccurring payments in the week ending 28 Nov 2021.**

Cumulative payments made by State since activation on 1 Jul 2021.



Date	Cumulative Payments (\$b)
7 Nov	\$7.47b
14 Nov	\$7.48b
21 Nov	\$7.48b
28 Nov	\$7.48b
29 Nov	\$7.48b

**Australian Capital Territory**  
Lockdown since 12 Aug to 14 Oct  
Claiming period ended 25 Nov

**65,000 people have received at least one COVID Disaster Payment.**

**\$344.7m paid out as at 29 Nov 2021.**

**\$30,000 paid in initial and reoccurring payments in the week ending 28 Nov 2021.**

Cumulative payments made by State since activation on 20 Aug 2021.



Date	Cumulative Payments (\$m)
7 Nov	\$343.4m
14 Nov	\$344.5m
21 Nov	\$344.7m
28 Nov	\$344.7m
29 Nov	\$344.7m

# Pandemic Response Payments (continued)

Data as at midnight:  
29 Nov 2021

## COVID-19 DISASTER PAYMENTS

