



Australian Government
Operation COVID Shield

COVID-19 Vaccine Roll-out

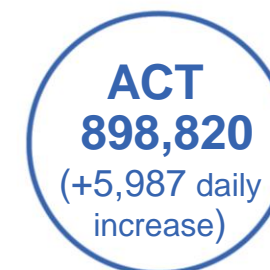
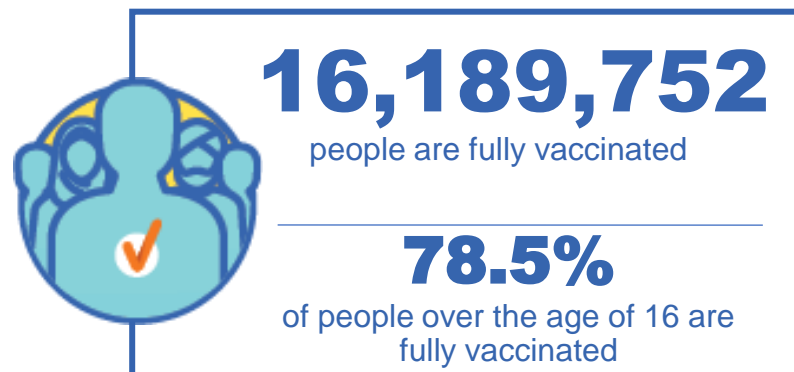
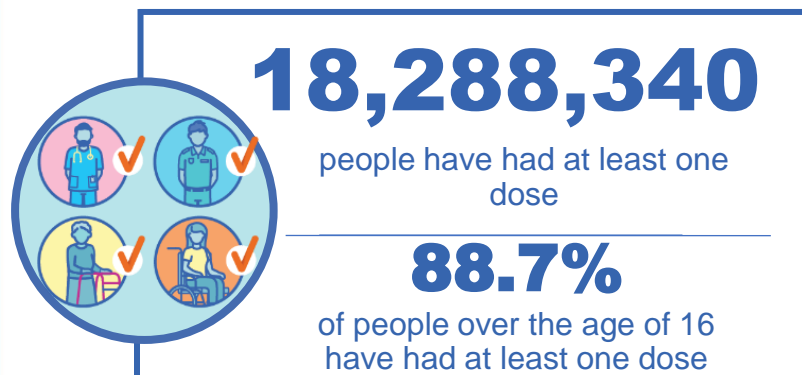
03 November 2021

Data as at:
02 Nov 2021

Total vaccine doses



36,049,455 total vaccine
doses administered nationally as at 02 November
+147,409 recorded in the last 24 hours



*Administration state breakdown indicates state in which a vaccine was administered

**Overall dose count includes instances of more than two doses per person in a small number of cases.

Source: Australian Immunisation Register

Data as at:
02 Nov 2021

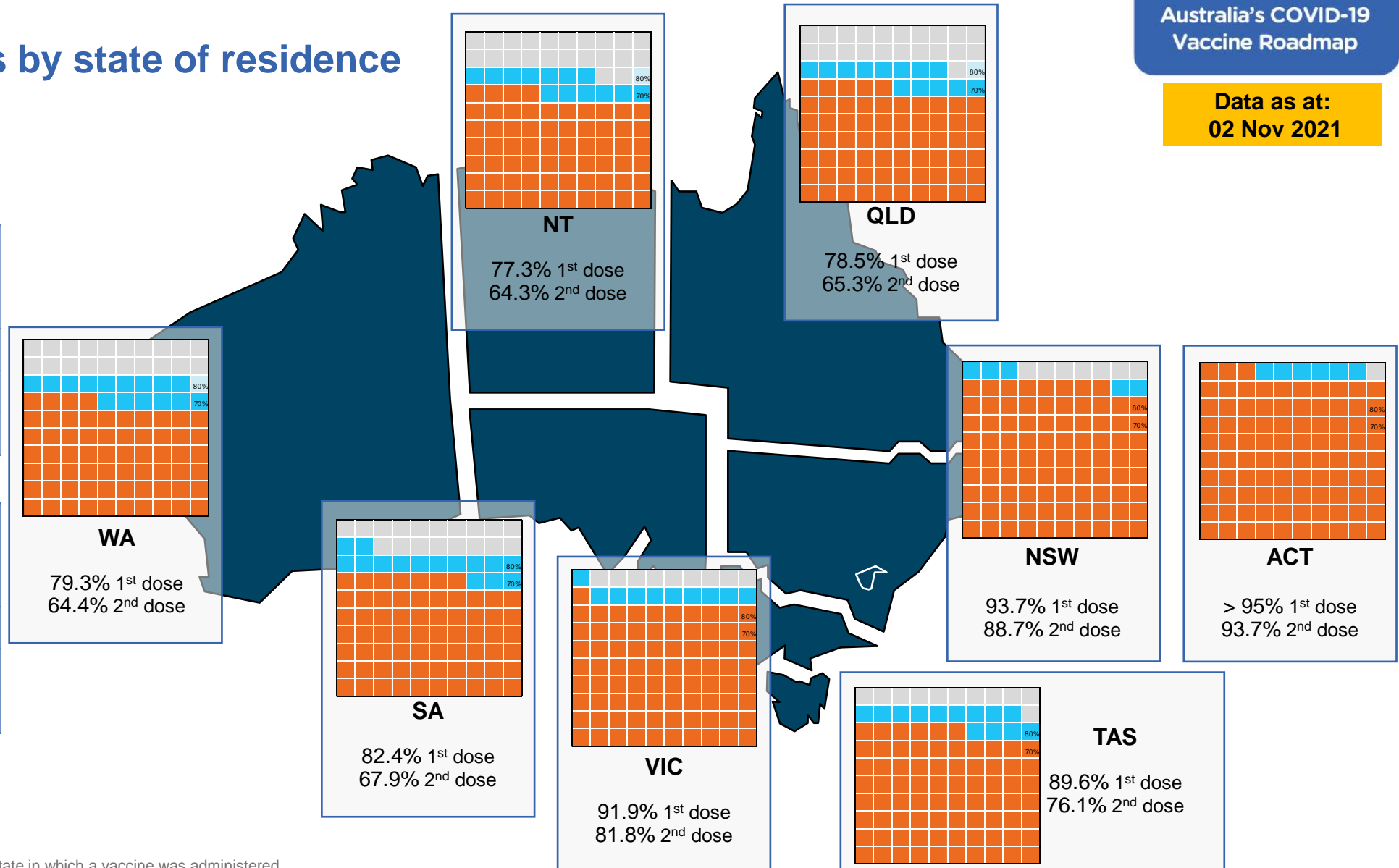
Vaccinations by state of residence

First doses

Age	Today	4 weeks ago	8 weeks ago
16+	88.7%	81.1%	65.7%
50+	>95%	91.2%	83.2%
70+	>95%	>95%	91.2%

Fully vaccinated

Age	Today	4 weeks ago	8 weeks ago
16+	78.5%	59.2%	40.6%
50+	86.9%	74.8%	59.8%
70+	91.2%	81.7%	69.8%



*Residential state may differ from the state in which a vaccine was administered

Commonwealth and Jurisdiction vaccine doses administered

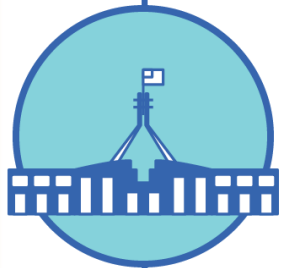
Data as at:
02 Nov 2021



36,049,455 total vaccine
doses administered nationally as at 02 November
+ 147,409 recorded in the last 24 hours



14,855,234
doses administered by state
and territory facilities
+ 49,826
recorded in the last 24 hours



21,194,221
doses administered by
commonwealth facilities
+ 97,583
recorded in the last 24 hours
20,137,478 total vaccine doses
administered in primary care settings
1,056,743 total vaccine doses
administered in aged care and disability
settings

NSW	Jurisdictions	Commonwealth
Cumulative	4,124,407	8,346,277
Daily increase	11,813	31,194

VIC	Jurisdictions	Commonwealth
Cumulative	4,553,707	5,399,716
Daily increase	9,429	7,590

QLD	Jurisdictions	Commonwealth
Cumulative	2,566,650	3,686,893
Daily increase	10,736	31,025

WA	Jurisdictions	Commonwealth
Cumulative	1,505,019	1,664,613
Daily increase	6,311	12,900

TAS	Jurisdictions	Commonwealth
Cumulative	415,002	336,279
Daily increase	1,648	2,402

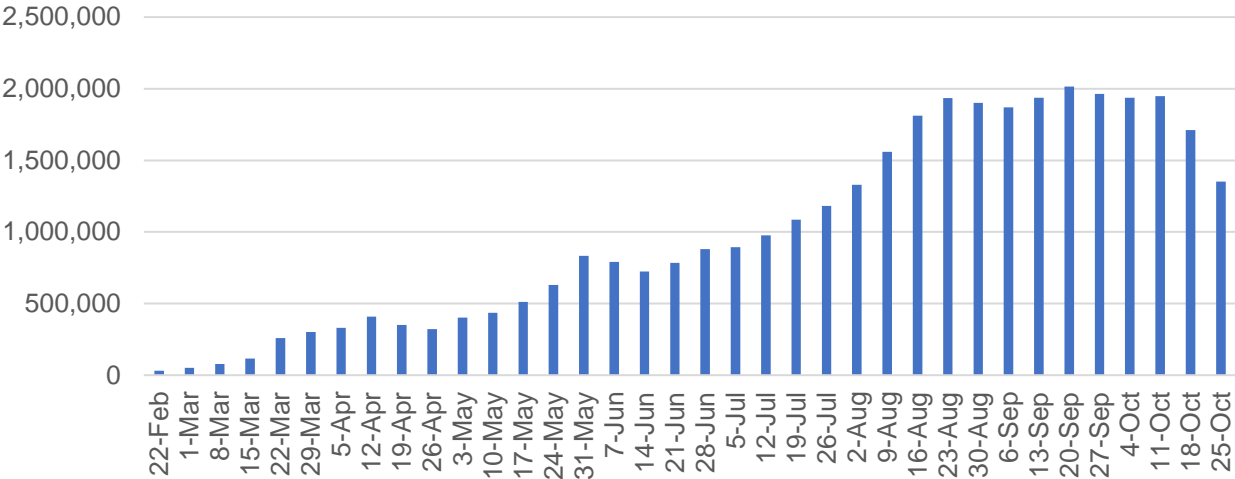
SA	Jurisdictions	Commonwealth
Cumulative	1,049,376	1,179,441
Daily increase	7,240	7,494

ACT	Jurisdictions	Commonwealth
Cumulative	447,228	451,592
Daily increase	1,816	4,171

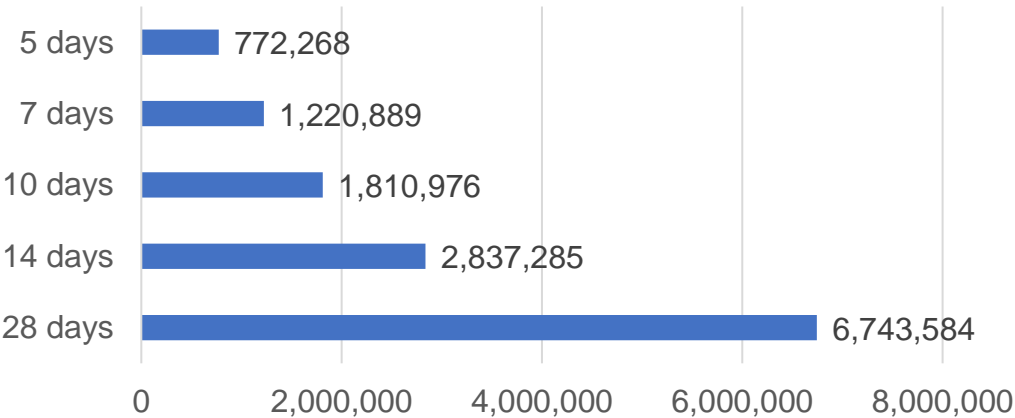
NT	Jurisdictions	Commonwealth
Cumulative	193,845	129,410
Daily increase	833	807

Vaccine milestone charts

Jabs in arms by week



Doses Reported

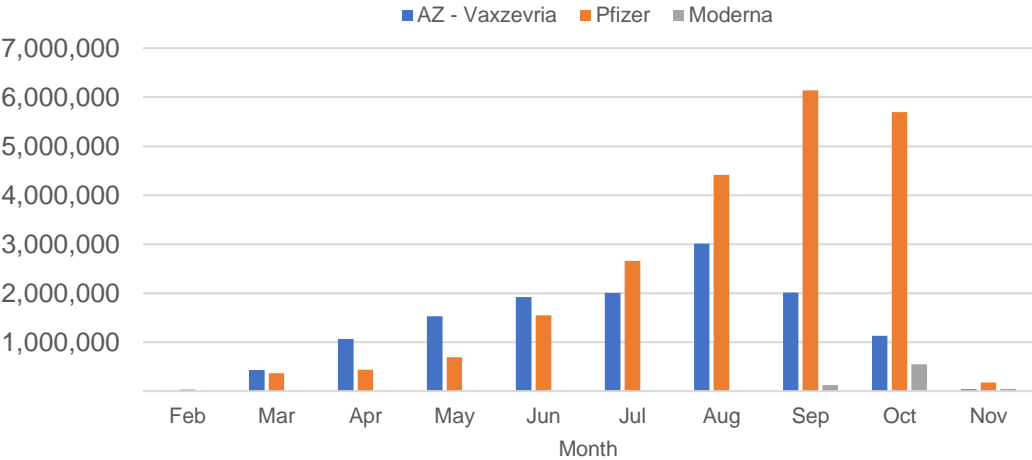


*Sourced from the Australian Immunisation Register.

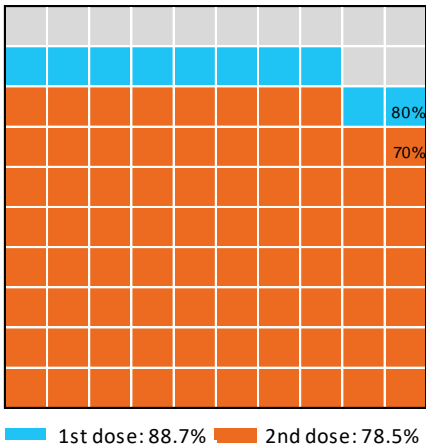
Data as at:
02 Nov 2021

Australia's COVID-19
Vaccine Roadmap

Doses by administration month and vaccine type



Eligible population percentage coverage



*Each square represents 1% of the national population. Squares are filled as milestones are achieved.

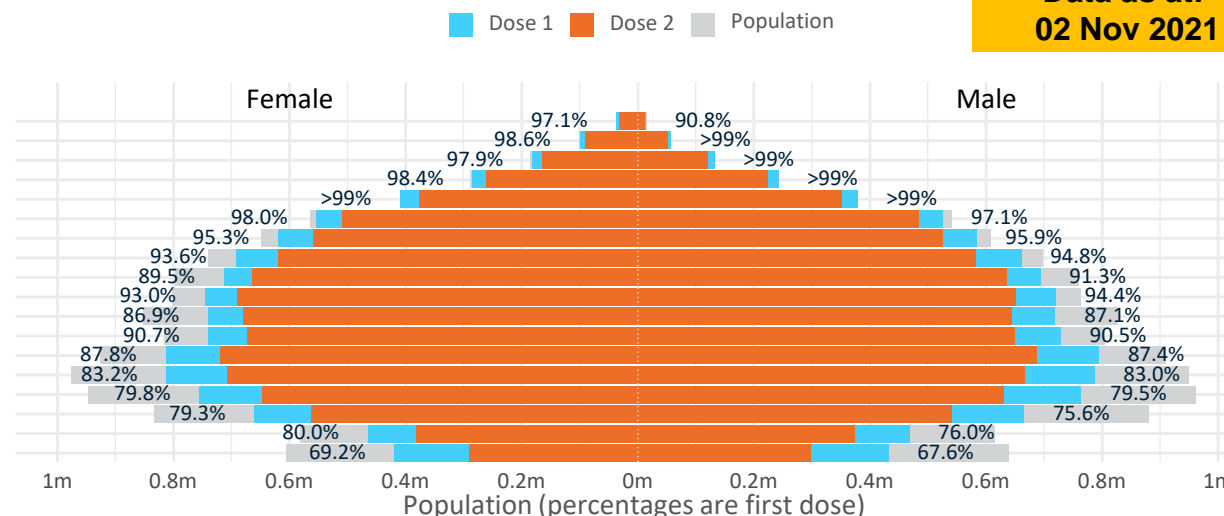
Doses by age and sex

First and second doses by age and sex

Australia's COVID-19
Vaccine Roadmap

Data as at:
02 Nov 2021

Age	Dose 1	Dose 2
95+	50,481 (95.4%)	44,378 (83.9%)
90-94	157,347 (>99%)	141,333 (89.2%)
85-89	313,829 (>99%)	284,751 (90.1%)
80-84	526,566 (>99%)	484,097 (91.6%)
75-79	787,827 (>99%)	729,182 (94.2%)
70-74	1,078,542 (97.6%)	992,431 (89.8%)
65-69	1,203,731 (95.7%)	1,084,673 (86.2%)
60-64	1,354,721 (94.3%)	1,202,952 (83.7%)
55-59	1,407,811 (90.5%)	1,301,250 (83.6%)
50-54	1,466,691 (93.7%)	1,342,486 (85.8%)
45-49	1,460,211 (87.1%)	1,324,587 (79.0%)
40-44	1,470,276 (90.7%)	1,322,661 (81.6%)
35-39	1,611,904 (87.8%)	1,409,596 (76.8%)
30-34	1,605,725 (83.5%)	1,379,266 (71.7%)
25-29	1,528,466 (80.2%)	1,284,584 (67.4%)
20-24	1,331,518 (77.8%)	1,107,292 (64.7%)
16-19	932,694 (78.0%)	754,233 (63.1%)
12-15	850,529 (68.4%)	587,736 (47.2%)



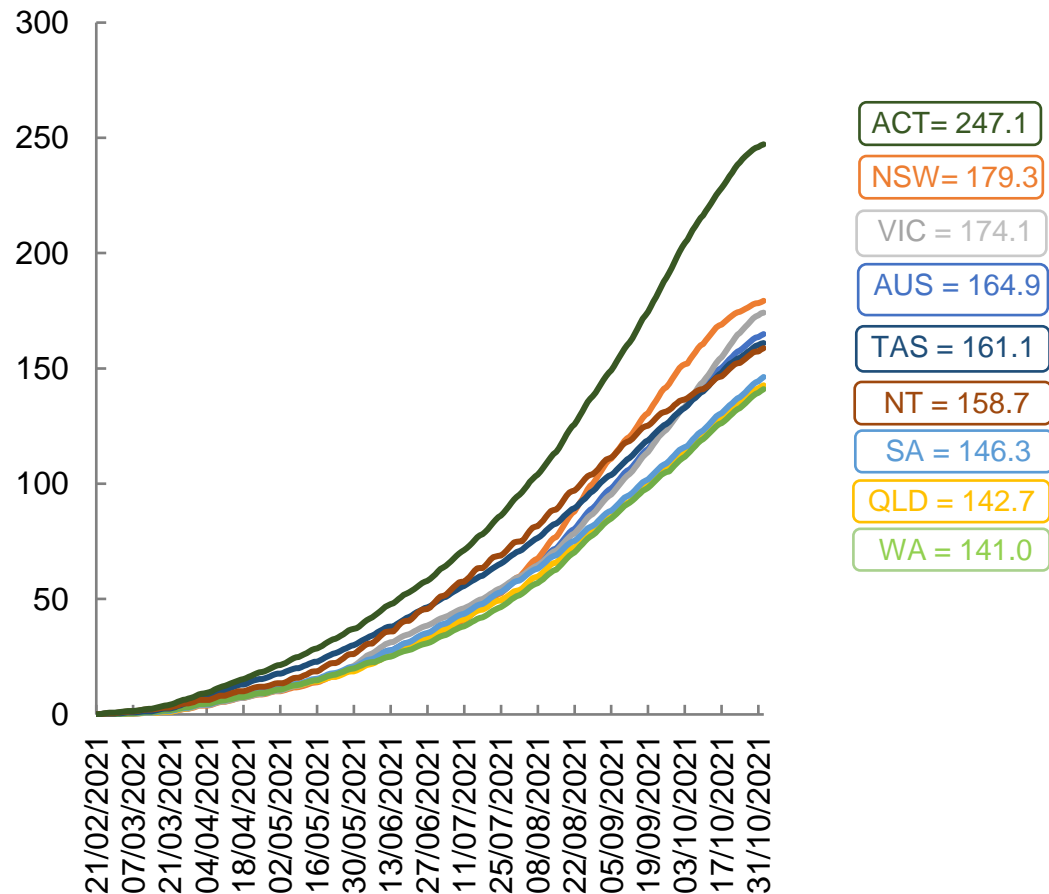
	AUS	ACT	NSW	NT	QLD	SA	TAS	VIC	WA
16 and over - dose 1	18,288,340	342,442	6,153,092	147,298	3,230,067	1,187,599	394,298	4,971,255	1,677,127
16 and over - dose 2	16,189,752	322,413	5,823,189	122,485	2,683,996	978,067	335,062	4,422,278	1,363,005
16 and over - population	20,619,959*	344,037	6,565,651	190,571	4,112,707	1,440,400	440,172	5,407,574	2,114,978
16 and over % with dose 1	88.69%	>99%	93.72%	77.29%	78.54%	82.45%	89.58%	91.93%	79.30%
16 and over % with dose 2	78.51%	93.71%	88.69%	64.27%	65.26%	67.90%	76.12%	81.78%	64.45%
50 and over - dose 1	8,347,546	132,826	2,748,931	52,369	1,591,885	618,046	207,248	2,142,675	802,745
50 and over - dose 2	7,607,533	126,726	2,624,704	46,308	1,400,145	534,067	184,146	1,958,793	692,598
50 and over - population	8,749,703	127,802	2,807,793	62,280	1,758,855	674,384	220,036	2,211,211	885,370
50 and over % with dose 1	95.40%	>99%	97.90%	84.09%	90.51%	91.65%	94.19%	96.90%	90.67%
50 and over % with dose 2	86.95%	>99%	93.48%	74.35%	79.61%	79.19%	83.69%	88.58%	78.23%
70 and over - dose 1	2,914,592	43,178	968,530	10,919	556,200	233,513	76,347	735,911	269,621
70 and over - dose 2	2,676,172	41,106	922,760	9,789	501,414	204,541	68,267	674,715	236,716
70 and over - population	2,934,706	39,946	962,606	12,343	577,767	240,514	77,155	743,519	280,281
70 and over % with dose 1	>99%	>99%	>99%	88.46%	96.27%	97.09%	98.95%	98.98%	96.20%
70 and over % with dose 2	91.19%	>99%	95.86%	79.31%	86.78%	85.04%	88.48%	90.75%	84.46%
12 to 15 - dose 1	850,529	19,429	310,784	7,122	140,756	41,341	15,848	251,772	58,021
12 to 15 - dose 2	587,736	16,570	254,166	4,220	81,036	19,813	6,728	173,841	28,448
12 to 15 - population	1,243,990	19,693	390,330	13,060	270,146	82,747	26,308	308,611	132,869
12 to 15 % with dose 1	68.37%	98.66%	79.62%	54.53%	52.10%	49.96%	60.24%	81.58%	43.67%
12 to 15 % with dose 2	47.25%	84.14%	65.12%	32.31%	30.00%	23.94%	25.57%	56.33%	21.41%

*National population will not equal sum of listed jurisdictions due to a small number of people counted in national population residing in some 'other' territories. Sum of state doses will not add to national total as some records are unable to be geocoded to a State or Territory.

Doses sourced from Australian Immunisation Register, population from ABS ERP June 2020

Vaccinations by location

Cumulative total doses administered vs eligible state populations*

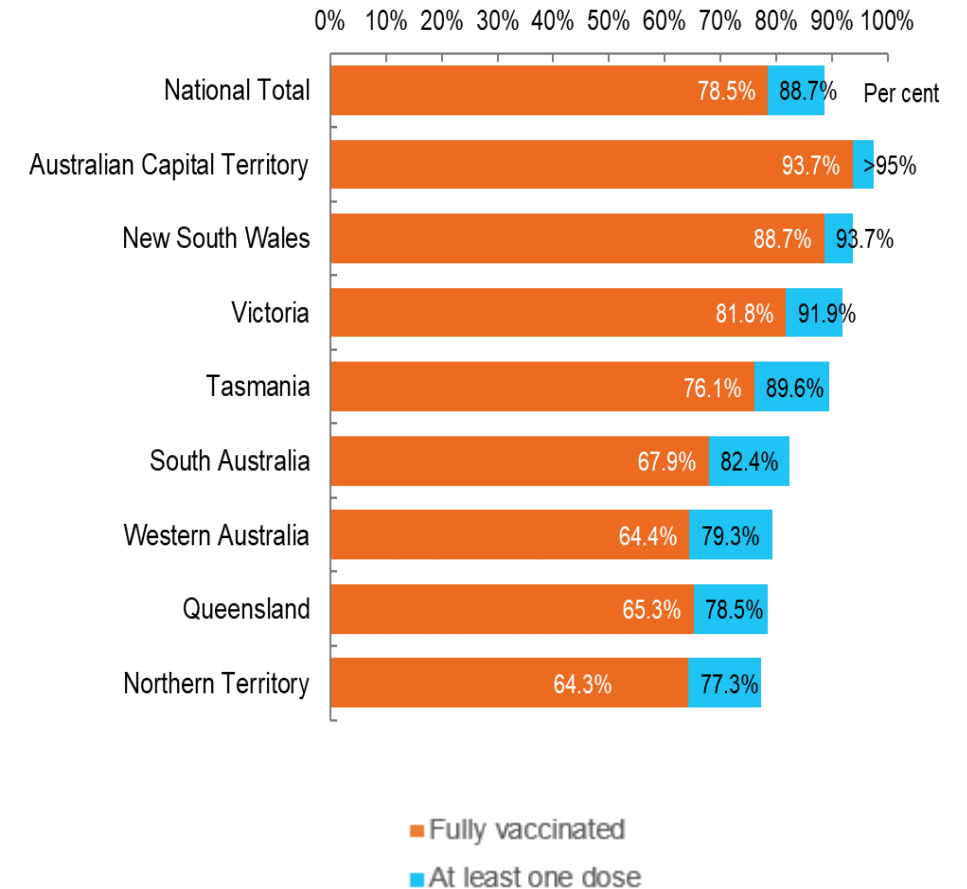


*Not an indication of percentage vaccinated, numbers will exceed 100 due to multiple doses required per person of the population. All doses are included, including those for the 12-15 cohort, and are based on vaccination provider location.

Data as at:
02 Nov 2021

Australia's COVID-19
Vaccine Roadmap

First and Second Doses by state of residence

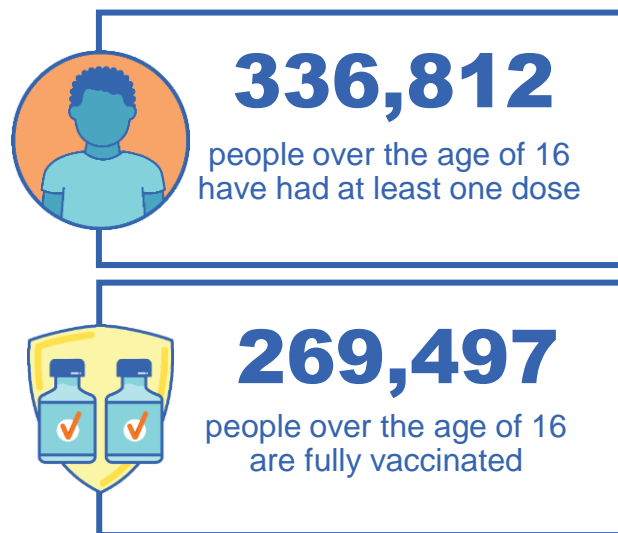


Aboriginal and Torres Strait Islander peoples

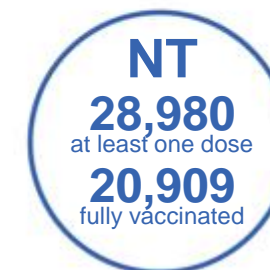
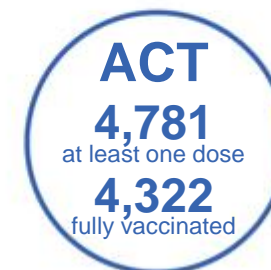
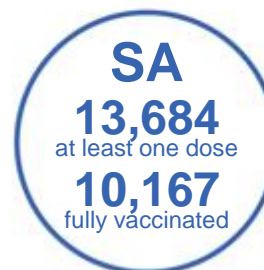
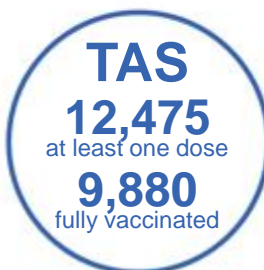
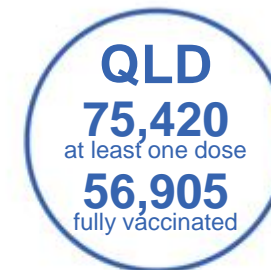
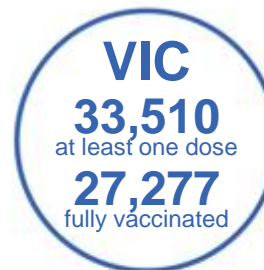
Number of people vaccinated

Data as at:
31 Oct 2021
Updated weekly

Australia's COVID-19
Vaccine Roadmap



169 Aboriginal community controlled health services (ACCHS)							
0#	50	26	39	12	3	21	18
ACT	NSW	NT	QLD	SA	TAS	VIC	WA



9,080 people with at least one dose
6,047 people fully vaccinated

residing in other territories or with missing residential information
Source: Australian Immunisation Register

*Identifying as Aboriginal and Torres Strait Islander is optional and the estimated population may be under reported.

**Includes all Aboriginal and Torres Strait Islander peoples who have received a vaccination, not limited to those administered in an ACCHS setting

***Updated weekly.

#ACCHS in the ACT are currently operating as a Commonwealth Vaccine Clinics so not included to avoid double counting

Data as at:
02 Nov 2021

Commonwealth primary care



Primary care vaccine administration sites

5,604	137	169	3,416
GPs	CVCs	ACCHS	Pharmacies



20,137,478 total vaccine doses
administered primary care settings as at 02 November
+ 96,480 recorded in the last 24 hours

Primary care vaccinations by provider type

	Doses administered	Daily increase	7 day increase
General Practice* includes other Commonwealth	18,407,039	70,146	595,577
Pharmacy	1,730,439	26,334	201,710

NSW
7,870,079
(+30,872 daily increase)

VIC
5,172,365
(+7,522 daily increase)

QLD
3,487,113
(+30,120 daily increase)

WA
1,589,975
(+12,411 daily increase)

TAS
326,274
(+2,314 daily increase)

SA
1,125,403
(+8,775 daily increase)

ACT
334,364
(+1,721 daily increase)

NT
113,381
(+800 daily increase)

118,524 doses administered to persons
residing in other territories or with
missing residential information

*General practice includes Commonwealth Vaccination Clinics, Aboriginal Community Health Centres, Royal Flying Doctor Service and other Commonwealth vaccination facilities

Source: Australian Immunisation Register

Data as at:
02 Nov 2021

Commonwealth aged care and disability doses administered



1,056,743 (+ 1,103 last 24 hours)

Total vaccine doses administered in aged care and disability facilities as at 02 November

Number of doses administered as part of the Commonwealth aged and disability care rollout

NSW
510,699
(+73 daily increase)

VIC
197,504
(+183 daily increase)

QLD
155,512
(+280 daily increase)

WA
71,506
(+297 daily increase)

TAS
16,860
(-5# daily increase)

SA
61,480
(+205 daily increase)

ACT
13,067
(+3 daily increase)

NT
5,799
(+3 daily increase)

*Sourced from the Australian Immunisation Register. Includes all persons vaccinated at participating residential aged care, disability and related industry settings.

**State level breakdown indicates the residential location and may not align to the state in which the vaccination occurred.

#Numbers are calculated as difference in daily cumulative reported numbers to allow for historical corrections in all data sources. This can occasionally result in negative numbers, such as for TAS, where historical details about doses have been updated.

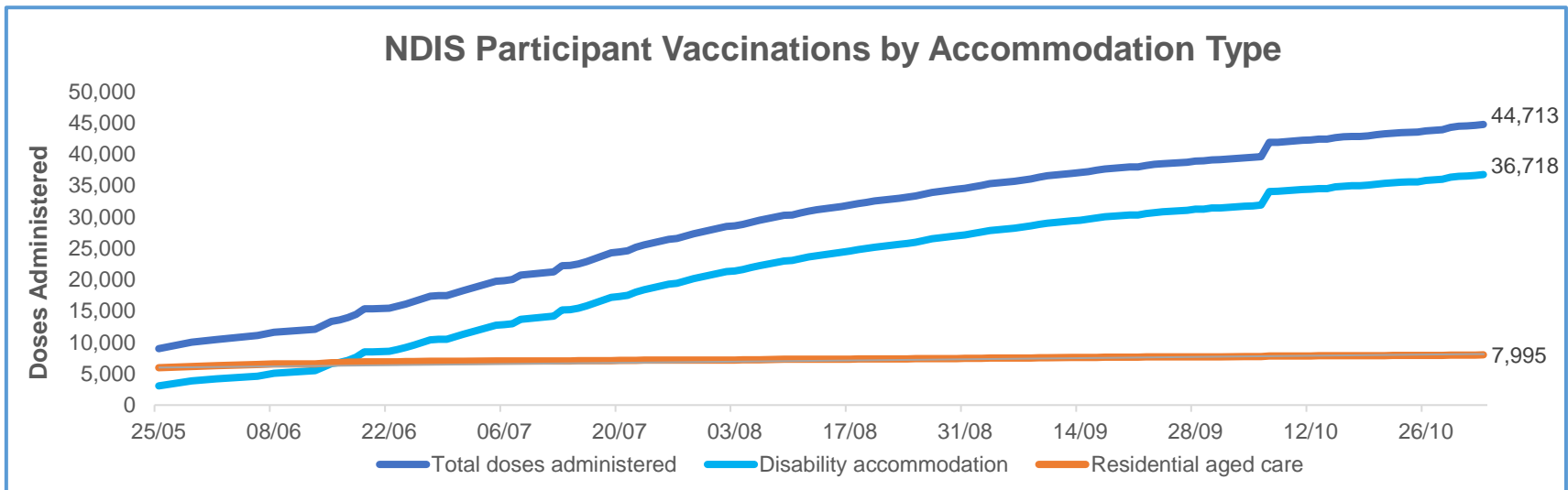
24,316

doses administered to persons residing in other territories or with missing residential information

Data as at:
02 Nov 2021*

Vaccination rate of people with disability and the disability workforce

Phase 1a – People with disability living in shared accommodation



	Total people with at least one dose	People fully vaccinated	Total number of individuals in cohort	Total doses administered	% People with at least one dose	% People fully vaccinated
NDIS participants living in shared accommodation **	23,112	21,601	27,603	44,713	83.7%	78.3%
NDIS screened workers ***	191,048	174,888	228,985	365,936	83.4%	76.4%



* Updates are available Monday to Friday on participants, and bi-weekly for workers, numbers may be up to four days old.

** Shared accommodation means two or more people with disability living in shared residential accommodation and NDIS participants living in Residential Aged Care accommodation as per the eligibility criteria of Phase 1a.

*** Total number of workers within the NDIS Commission Worker Screening database who have ever been successfully screened and linked to an NDIS registered provider or participant.

Source: Linkage between National Disability Insurance Agency data, NDIS Quality and Safeguards Commission data and the Australian Immunisation Register.

Residential aged care vaccination rollout

Residential aged care facilities status

100% Commonwealth facilities visited (2,573 planned sites)

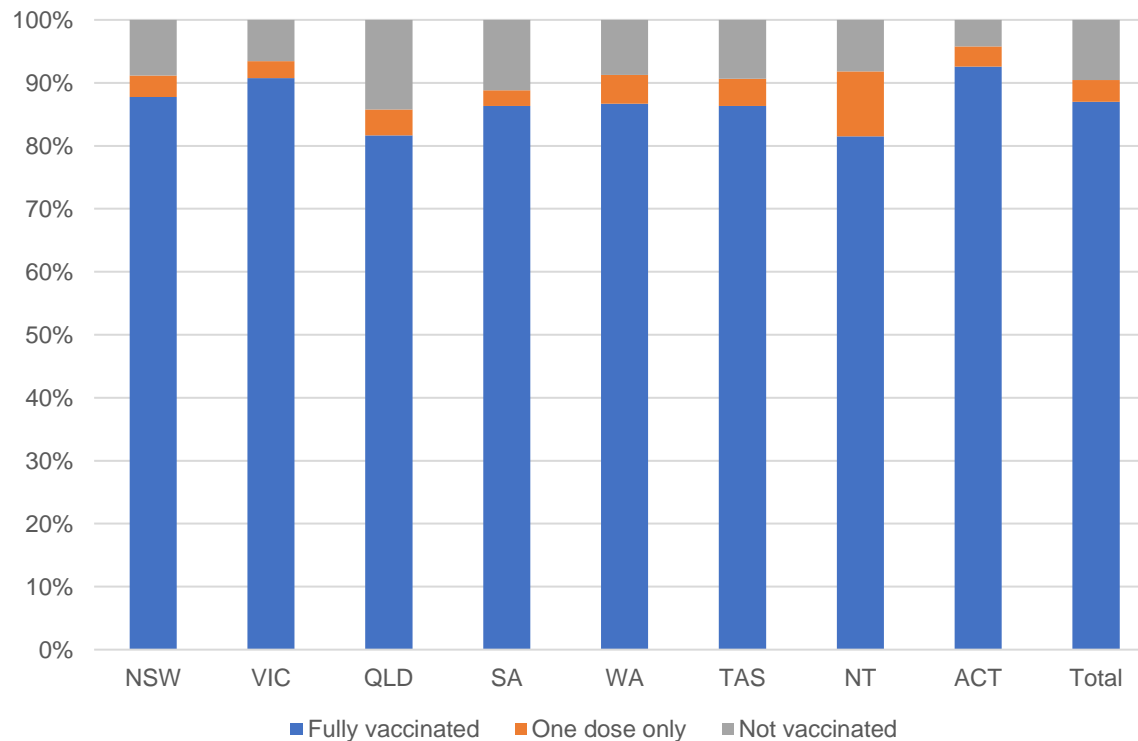
162,118 People fully vaccinated

168,548 People with at least one dose

Australia's COVID-19 Vaccine Roadmap

Data as at:
2 Nov 2021

Aged care resident vaccinations



Aged care worker vaccinations

Jurisdictions	Total workers with at least one dose	Workers fully vaccinated	% Workers with at least one dose	% Workers fully vaccinated
NSW	78,309	77,097	99.8%	98.2%
VIC	71,252	67,391	99.8%	94.4%
QLD	48,449	46,523	99.8%	95.8%
SA	27,407	25,922	100.0%	94.5%
WA	23,788	21,608	99.9%	90.7%
TAS	7,688	7,103	99.9%	92.3%
NT	823	818	99.5%	98.9%
ACT	2,978	2,897	99.9%	97.2%
Total	260,694	249,359	99.8%	95.5%

Source: My Aged Care Portal staff vaccination progress

**Resident vaccination information is reported manually by service providers

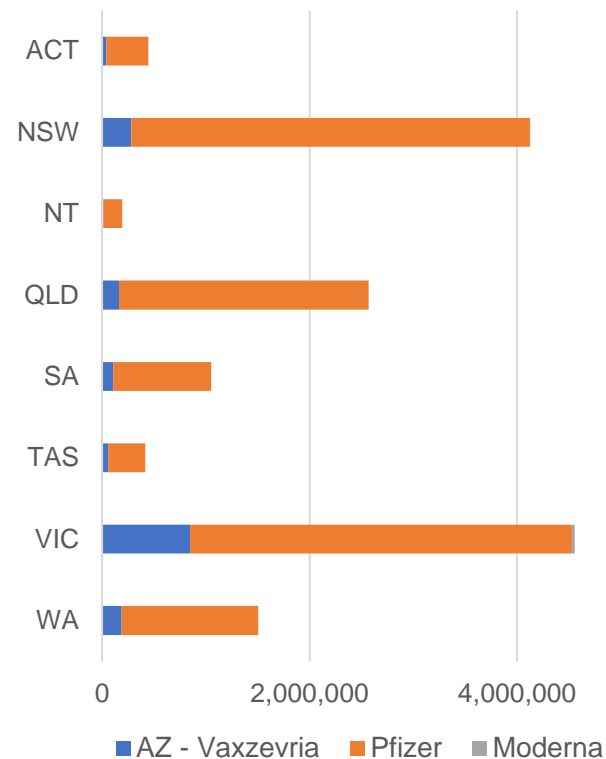
*Status updates are provided by facilities at least once per week. Reporting is updated Monday to Friday to encompass different facility updates being made on different days.

Data is sourced directly from Aged Care Service Providers and is not drawn or closely aligned with data from AIR due to inconsistencies and potential lags in uploading of records.

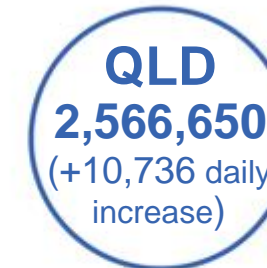
Data as at:
02 Nov 2021

Jurisdiction administered

Total vaccine doses administered in State and Territory clinics as at 02 November



14,855,234 total vaccine doses administered
in State and Territory clinics as at 02 November
+ **49,826** recorded in the last 24 hours
+ **412,333** recorded in the last 7 days



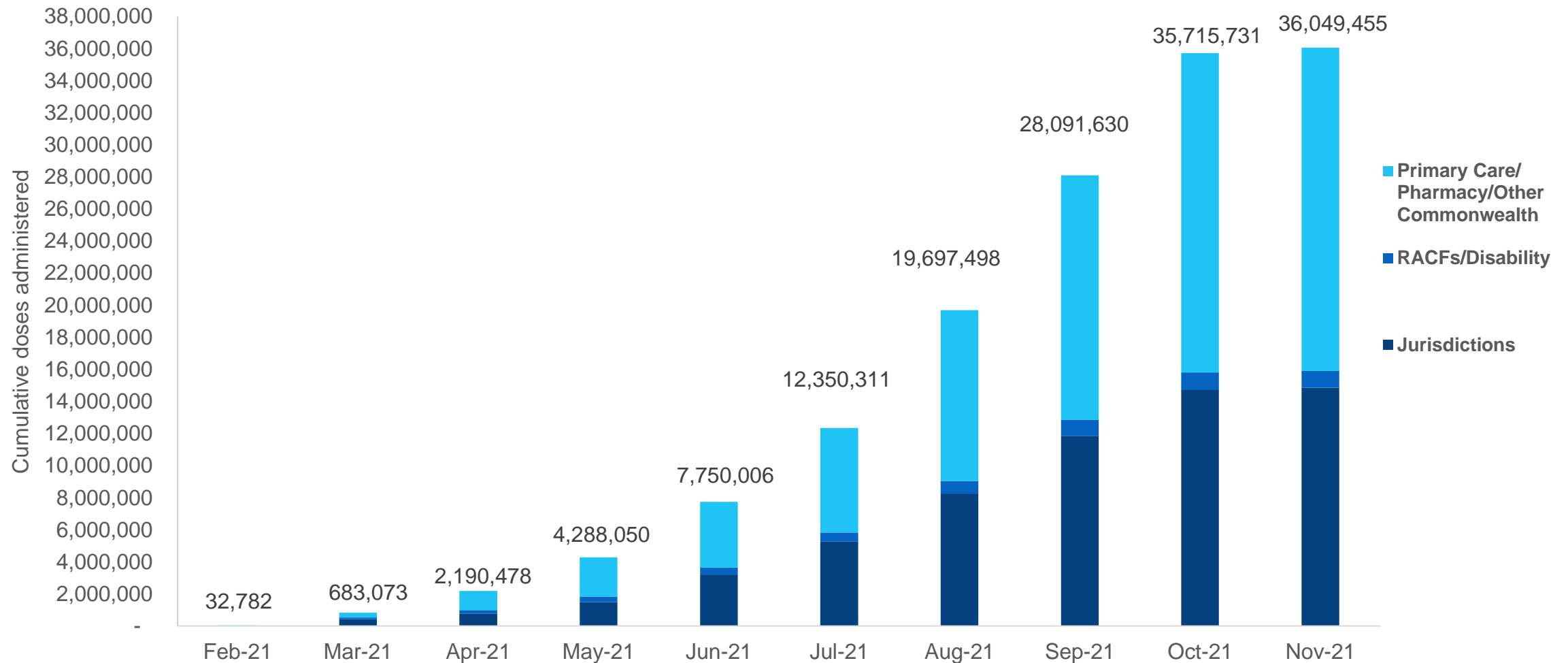
*Sourced from the Australian Immunisation Register and self-reported data. Numbers are calculated as difference in daily cumulative reported numbers to allow for historical corrections in all self-reported data sources.

Source: Australian Immunisation Register

Cumulative doses administered by channel

Data as at:
02 Nov 2021

Australia's COVID-19
Vaccine Roadmap



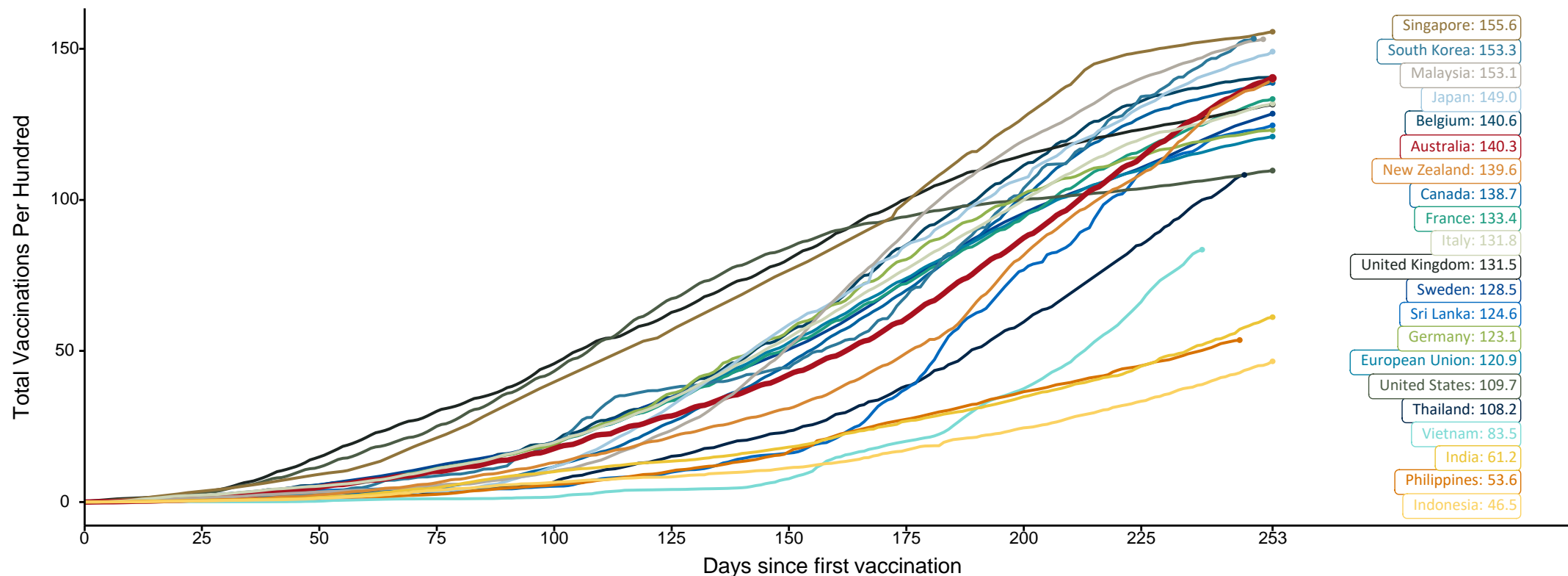
Source: Australian Immunisation Register

Doses at equivalent stages of rollout (Day 253)

Data as at:
02 Nov 2021

The x-axis is truncated at the length of Australia's vaccination program. Countries with intermittent reporting have had their doses per 100 imputed to Australia's current stage of rollout. Israel excluded as it is beyond scale of the graph

Cumulative doses administered (02 Nov): **36,049,455**

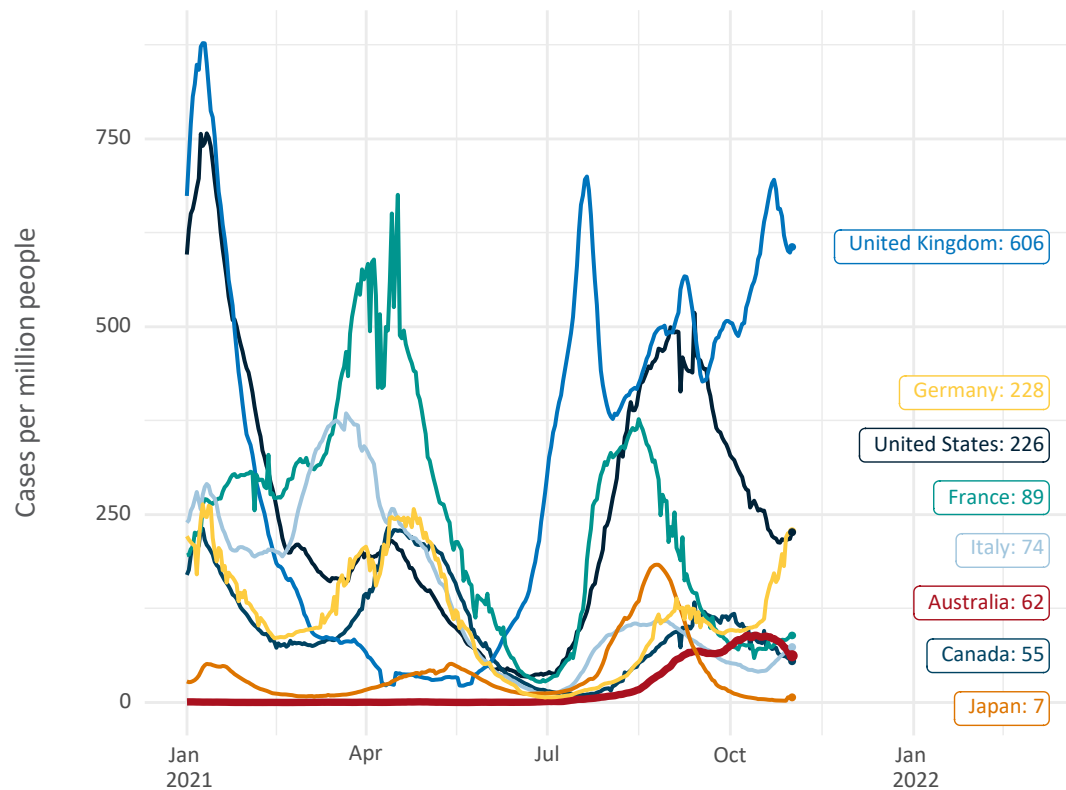


Note: From 15 September 2021, data for Australia includes all doses administered to people 12 and over. Prior to 15 September, data was for 16 and over
Source: Department of Health (Australia), Our World in Data (international)
Latest data: 02 November

International data – COVID-19

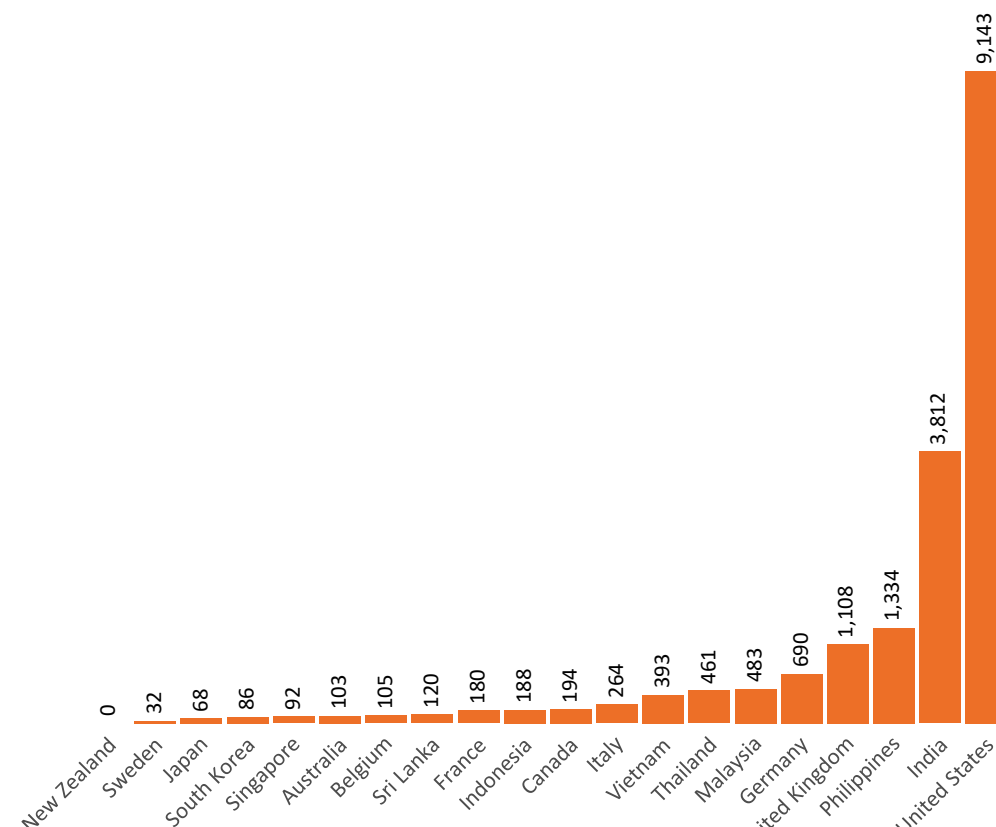
Data as at:
02 Nov 2021

New daily cases per million in 2021, Australia and G7 countries
Smoothed - 7 day average



Source: OWID
Data downloaded: 03 Nov 2021 08:38
Latest data: 01 Nov 2021

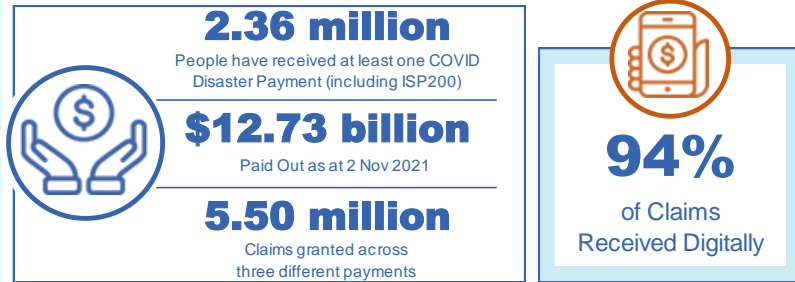
COVID-19 deaths in past 7 days - Australia and select countries



Source: OWID
Data downloaded: 03 Nov 2021 08:38
Latest data: 01 Nov 2021

Data as at midnight:
2 Nov 2021

Pandemic Response Payments (Current)



COVID Disaster Payment:	5.34 million claims received - 2.18 million individuals paid a total of \$12.30 billion.
\$200 Income Support Payment:	323,000 claims received - 181,000 individuals paid a total of \$263.88 million.
Pandemic Leave Disaster Payment:	117,000 claims received - 101,000 individuals paid a total of \$163.77 million.

CURRENT COVID-19 DISASTER PAYMENTS



**THREE
PAYMENTS
AVAILABLE**

COVID Disaster Payment

assisting during a lockdown event in a Commonwealth hotspot.

Income Support Payment \$200

for income support recipients who lost at least 8 hours of work.

Pandemic Leave Disaster Payment

for those who have to self-isolate, quarantine or care.

For more information visit:
servicesaustralia.gov.au

New South Wales

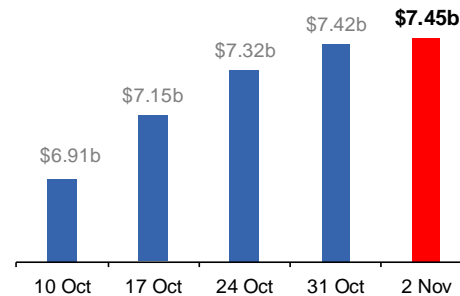
Active lockdown since 24 Jun
Partial reopening from 10 Oct

1.08m people have received at least one COVID Disaster Payment.

\$7.45b paid out as at 2 Nov 2021.

\$98m paid in initial and reoccurring payments in the week ending 31 Oct 2021.

Cumulative payments made by State since activation on 1 Jul 2021.



Victoria

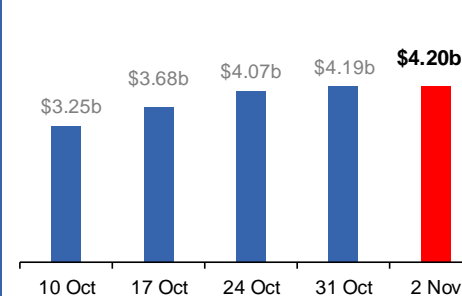
Active lockdown (#6) since 6 Aug

738,000 people have received at least one COVID Disaster Payment.

\$4.20b paid out as at 2 Nov 2021.

\$111m paid in initial and reoccurring payments in the week ending 31 Oct 2021.

Cumulative payments made by State since activation on 8 Jun 2021.



Australian Capital Territory

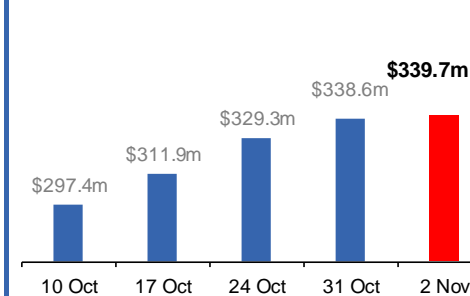
Active lockdown since 12 Aug
Partial reopening from 14 Oct

65,000 people have received at least one COVID Disaster Payment.

\$339.7m paid out as at 2 Nov 2021.

\$9.0m paid in initial and reoccurring payments in the week ending 31 Oct 2021.

Cumulative payments made by State since activation on 20 Aug 2021.



Tasmania

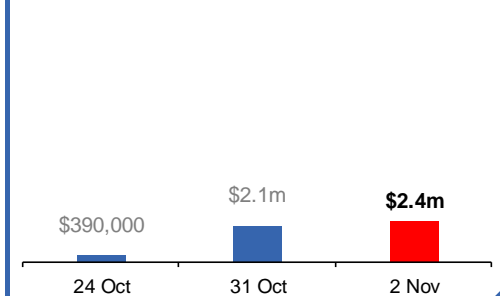
Lockdown from 15 Oct to 18 Oct
Claiming period ends 12 Nov

4,700 people have received at least one COVID Disaster Payment.

\$2.4m paid out as at 2 Nov 2021.

\$1.7 paid in initial payments in the week ending 31 Oct 2021.

Cumulative payments made by State since activation on 22 Oct 2021.



Pandemic Response Payments (Closed Events)

Data as at midnight:
2 Nov 2021

CLOSED COVID-19 DISASTER PAYMENTS

