



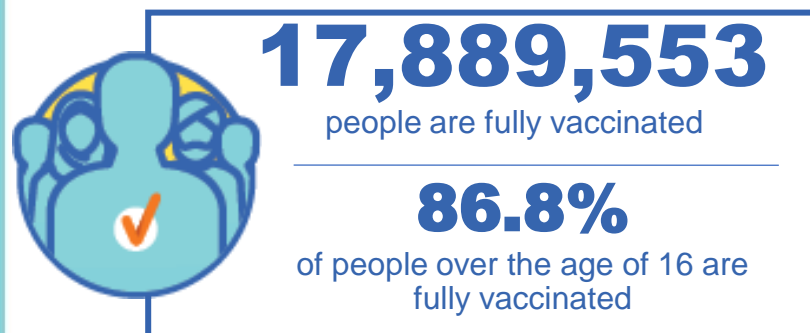
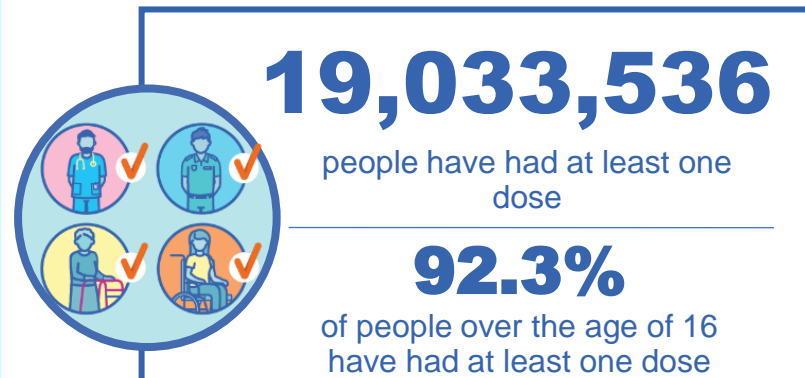
Australian Government
Operation COVID Shield

COVID-19 Vaccine Roll-out

29 November 2021

Data as at:
28 Nov 2021

Total vaccine doses



39,106,606 total vaccine
doses administered nationally as at 28 November

+32,764 recorded in the last 24 hours

NSW
12,921,201
(+1,700 daily
increase)

VIC
10,664,601
(+3,486 daily
increase)

QLD
7,168,341
(+13,684 daily
increase)

WA
3,612,362
(+6,326 daily
increase)

TAS
842,144
(+1,716 daily
increase)

SA
2,563,363
(+4,826 daily
increase)

ACT
955,850
(+680 daily
increase)

NT
378,744
(+346 daily
increase)

*Administration state breakdown indicates state in which a vaccine was administered

**Overall dose count includes instances of more than two doses per person in a small number of cases.

Source: Australian Immunisation Register

Data as at:
28 Nov 2021

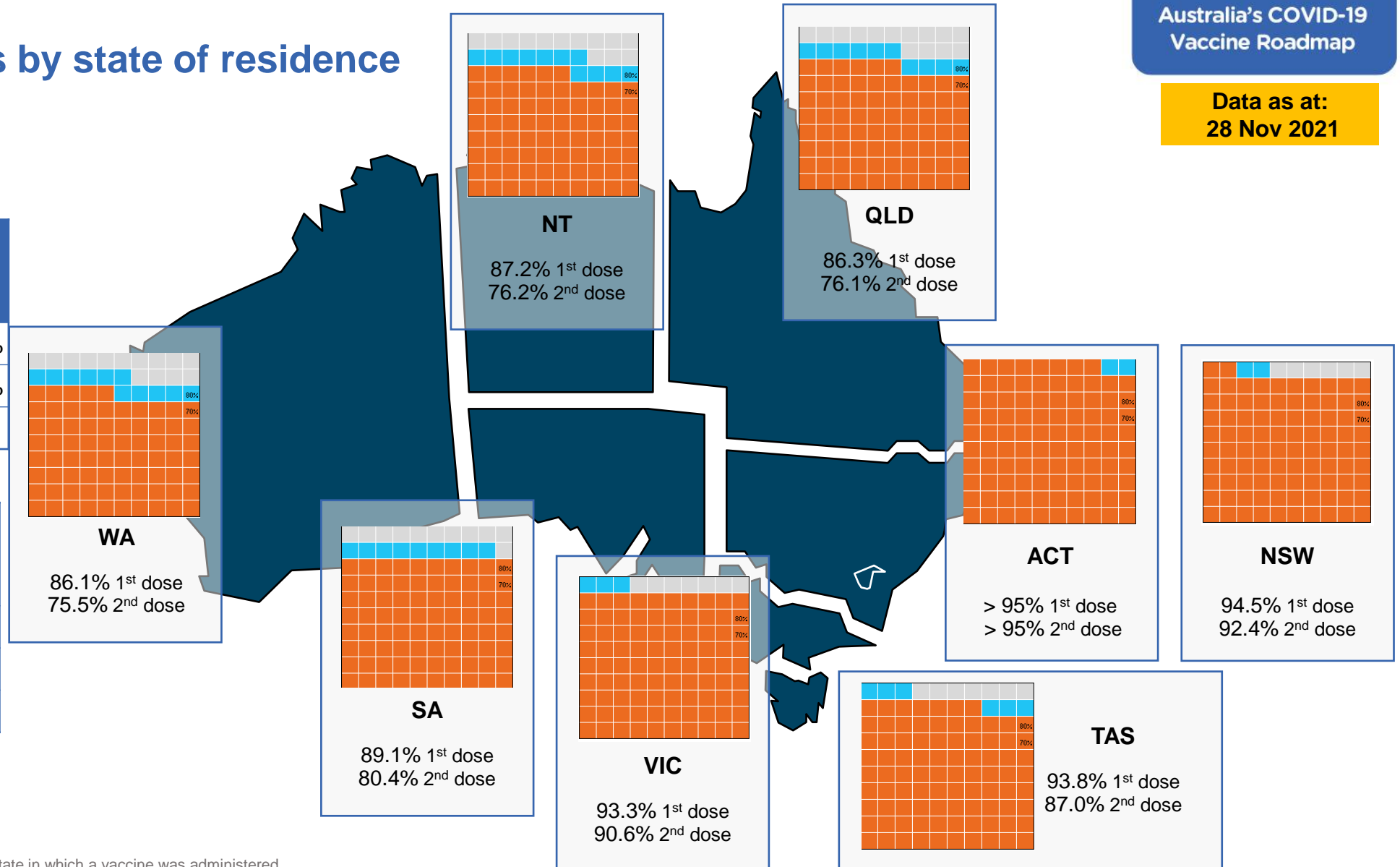
Vaccinations by state of residence

First doses

Age	Today	4 weeks ago	8 weeks ago
16+	92.3%	88.6%	80.5%
50+	>95%	>95%	91.0%
70+	>95%	>95%	>95%

Fully vaccinated

Age	Today	4 weeks ago	8 weeks ago
16+	86.8%	78.1%	57.9%
50+	93.5%	86.8%	74.2%
70+	>95%	91.4%	81.5%



*Residential state may differ from the state in which a vaccine was administered

Commonwealth and Jurisdiction vaccine doses administered

Data as at:
28 Nov 2021



39,106,606 total vaccine
doses administered nationally as at 28 November
+ 32,764 recorded in the last 24 hours



15,888,637
doses administered by state
and territory facilities
+ 20,700
recorded in the last 24 hours



23,217,969
doses administered by
commonwealth facilities
+ 12,064
recorded in the last 24 hours
22,104,013 total vaccine doses
administered in primary care settings
1,113,956 total vaccine doses
administered in aged care and disability
settings

NSW	Jurisdictions	Commonwealth
Cumulative	4,209,490	8,711,711
Daily increase	478	1,222

VIC	Jurisdictions	Commonwealth
Cumulative	4,754,395	5,910,206
Daily increase	1,770	1,716

QLD	Jurisdictions	Commonwealth
Cumulative	2,896,843	4,271,498
Daily increase	9,517	4,167

WA	Jurisdictions	Commonwealth
Cumulative	1,655,162	1,957,200
Daily increase	3,383	2,943

TAS	Jurisdictions	Commonwealth
Cumulative	458,351	383,793
Daily increase	1,208	508

SA	Jurisdictions	Commonwealth
Cumulative	1,208,732	1,354,631
Daily increase	3,632	1,194

ACT	Jurisdictions	Commonwealth
Cumulative	481,535	474,315
Daily increase	383	297

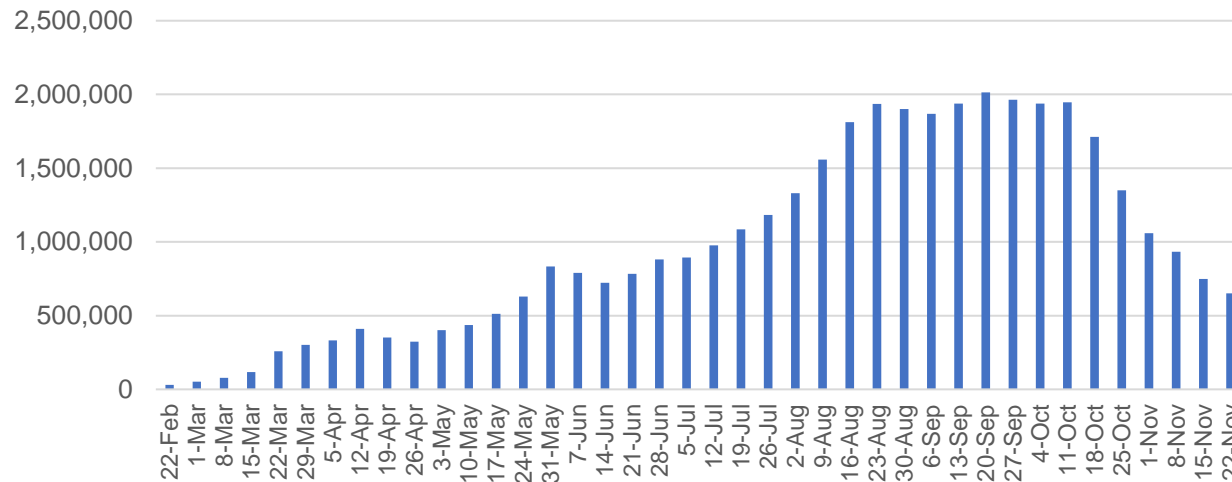
NT	Jurisdictions	Commonwealth
Cumulative	224,129	154,615
Daily increase	329	17

Vaccine milestone charts

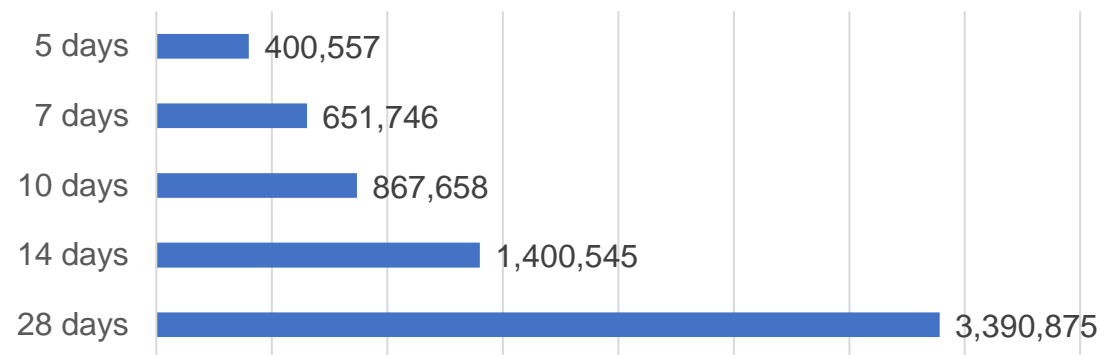
Data as at:
28 Nov 2021

Australia's COVID-19
Vaccine Roadmap

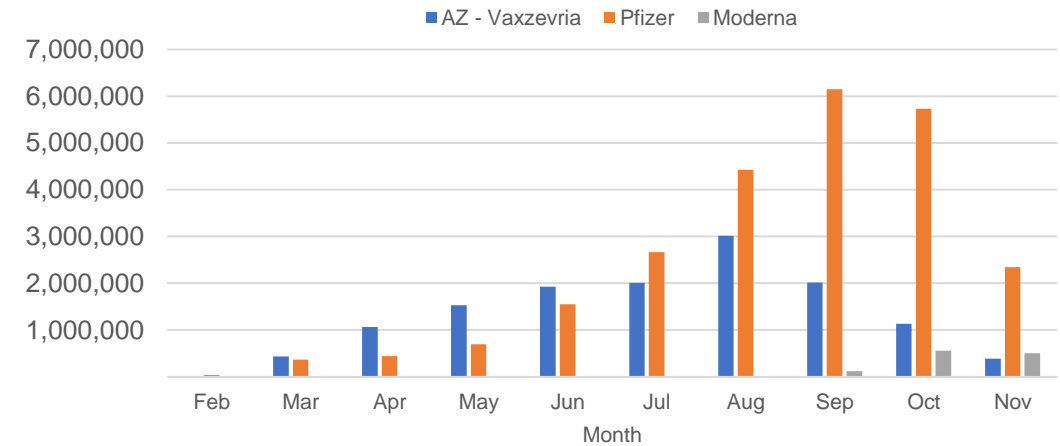
Doses Administered by Week



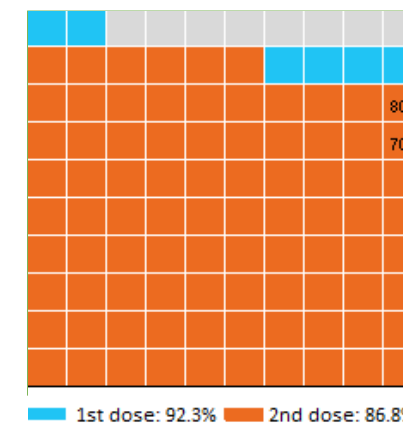
Doses Reported



Doses by administration month and vaccine type



Eligible population percentage coverage



*Sourced from the Australian Immunisation Register.

*Each square represents 1% of the national population. Squares are filled as milestones are achieved.

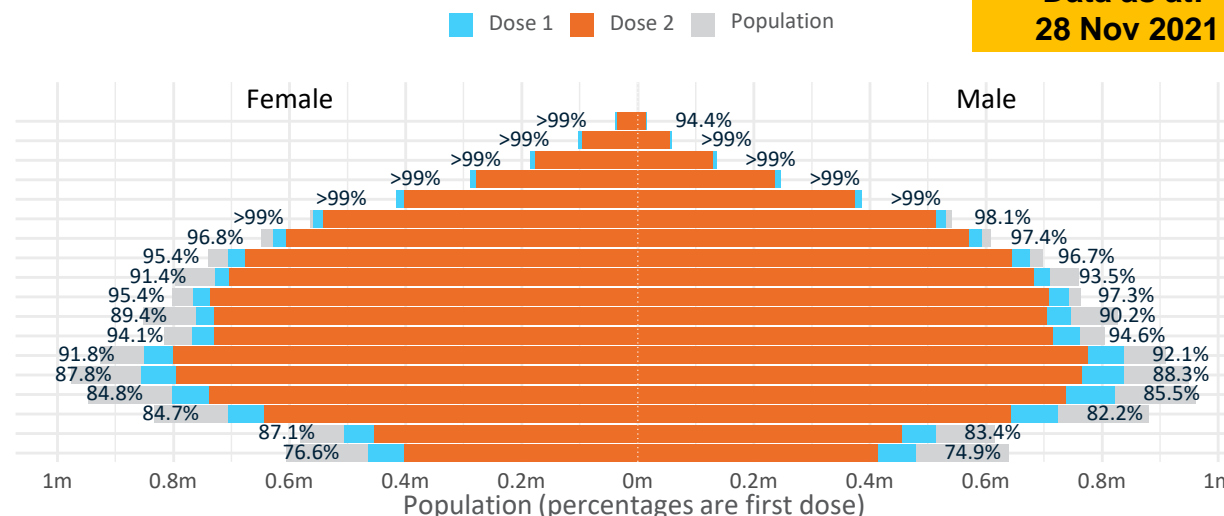
Doses by age and sex

First and second doses by age and sex

Australia's COVID-19
Vaccine Roadmap

Data as at:
28 Nov 2021

Age	Dose 1	Dose 2
95+	52,458 (>99%)	47,809 (90.4%)
90-94	161,353 (>99%)	150,958 (95.3%)
85-89	320,690 (>99%)	304,443 (96.3%)
80-84	535,578 (>99%)	514,784 (97.4%)
75-79	802,936 (>99%)	776,956 (>99%)
70-74	1,090,338 (98.7%)	1,054,753 (95.5%)
65-69	1,222,606 (97.2%)	1,176,301 (93.5%)
60-64	1,380,981 (96.1%)	1,321,781 (92.0%)
55-59	1,438,897 (92.5%)	1,386,961 (89.2%)
50-54	1,508,988 (96.5%)	1,445,760 (92.4%)
45-49	1,507,440 (89.9%)	1,435,125 (85.6%)
40-44	1,530,871 (94.5%)	1,446,343 (89.3%)
35-39	1,691,678 (92.2%)	1,579,280 (86.1%)
30-34	1,701,008 (88.4%)	1,565,469 (81.4%)
25-29	1,633,319 (85.7%)	1,482,747 (77.8%)
20-24	1,434,954 (83.8%)	1,290,616 (75.4%)
16-19	1,019,441 (85.3%)	909,467 (76.1%)
12-15	942,193 (75.7%)	815,144 (65.5%)



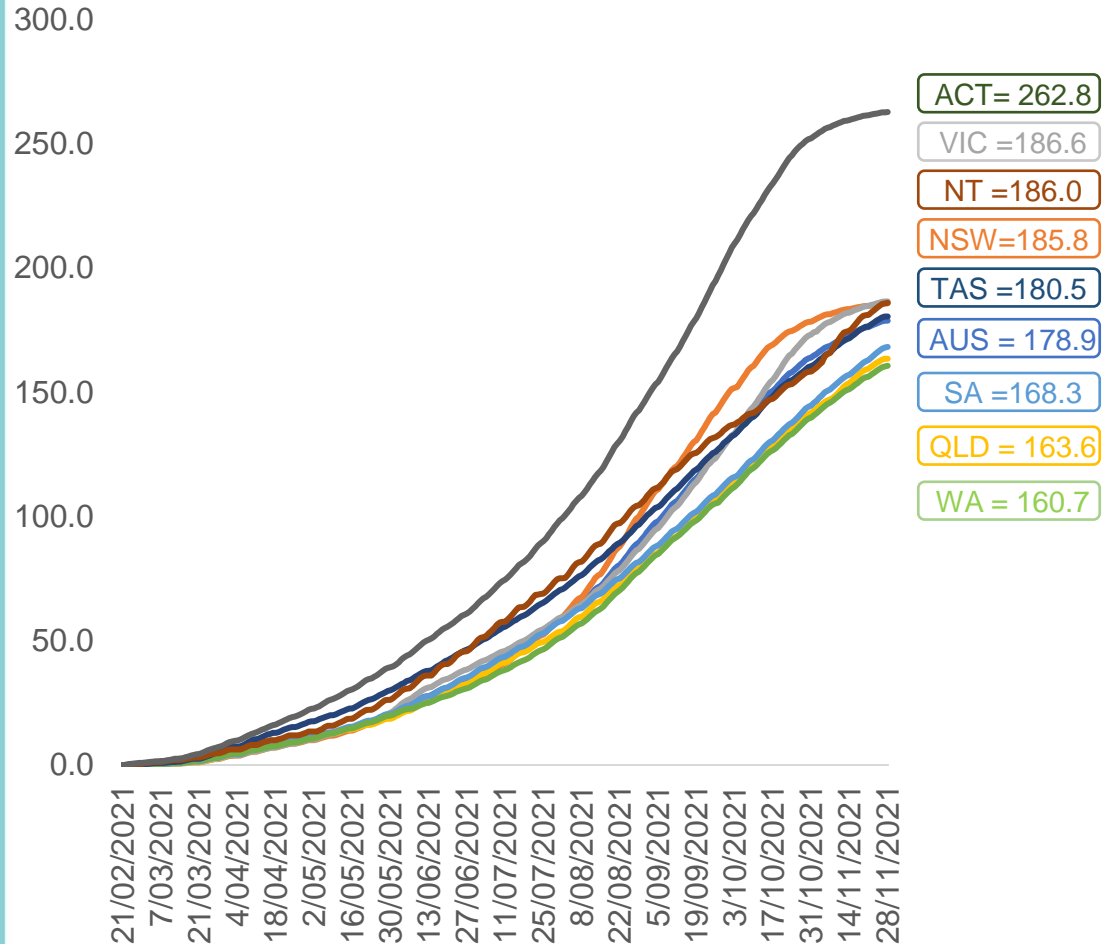
	AUS	ACT	NSW	NT	QLD	SA	TAS	VIC	WA
16 and over - dose 1	19,033,536	345,482	6,206,662	166,248	3,548,164	1,283,855	412,682	5,044,018	1,820,535
16 and over - dose 2	17,889,553	338,049	6,067,361	145,260	3,128,931	1,158,170	382,765	4,898,021	1,596,949
16 and over - population	20,619,959*	344,037	6,565,651	190,571	4,112,707	1,440,400	440,172	5,407,574	2,114,978
16 and over % with dose 1	92.31%	>99%	94.53%	87.24%	86.27%	89.13%	93.75%	93.28%	86.08%
16 and over % with dose 2	86.76%	98.26%	92.41%	76.22%	76.08%	80.41%	86.96%	90.58%	75.51%
50 and over - dose 1	8,514,825	133,701	2,766,591	55,873	1,650,111	640,978	211,700	2,168,115	830,784
50 and over - dose 2	8,180,506	131,409	2,718,076	51,719	1,546,006	599,316	200,261	2,115,240	768,750
50 and over - population	8,749,703	127,802	2,807,793	62,280	1,758,855	674,384	220,036	2,211,211	885,370
50 and over % with dose 1	97.32%	>99%	98.53%	89.71%	93.82%	95.05%	96.21%	98.05%	93.83%
50 and over % with dose 2	93.49%	>99%	96.80%	83.04%	87.90%	88.87%	91.01%	95.66%	86.83%
70 and over - dose 1	2,963,353	43,577	977,260	11,442	568,971	239,813	77,775	747,292	275,473
70 and over - dose 2	2,849,703	42,657	956,437	10,683	539,437	225,148	73,345	725,546	257,393
70 and over - population	2,934,706	39,946	962,606	12,343	577,767	240,514	77,155	743,519	280,281
70 and over % with dose 1	>99%	>99%	>99%	92.70%	98.48%	>99%	>99%	>99%	98.28%
70 and over % with dose 2	97.10%	>99%	>99%	86.55%	93.37%	93.61%	95.06%	97.58%	91.83%
12 to 15 - dose 1	942,193	19,683	317,065	9,353	172,203	56,126	19,060	266,625	74,785
12 to 15 - dose 2	815,144	18,840	298,699	6,929	132,655	41,237	15,574	242,368	53,476
12 to 15 - population	1,243,990	19,693	390,330	13,060	270,146	82,747	26,308	308,611	132,869
12 to 15 % with dose 1	75.74%	>99%	81.23%	71.62%	63.74%	67.83%	72.45%	86.40%	56.28%
12 to 15 % with dose 2	65.53%	95.67%	76.52%	53.06%	49.10%	49.84%	59.20%	78.54%	40.25%

*National population will not equal sum of listed jurisdictions due to a small number of people counted in national population residing in some 'other' territories. Sum of state doses will not add to national total as some records are unable to be geocoded to a State or Territory.

Doses sourced from Australian Immunisation Register, population from ABS ERP June 2020

Vaccinations by location

Cumulative total doses administered vs eligible state populations*

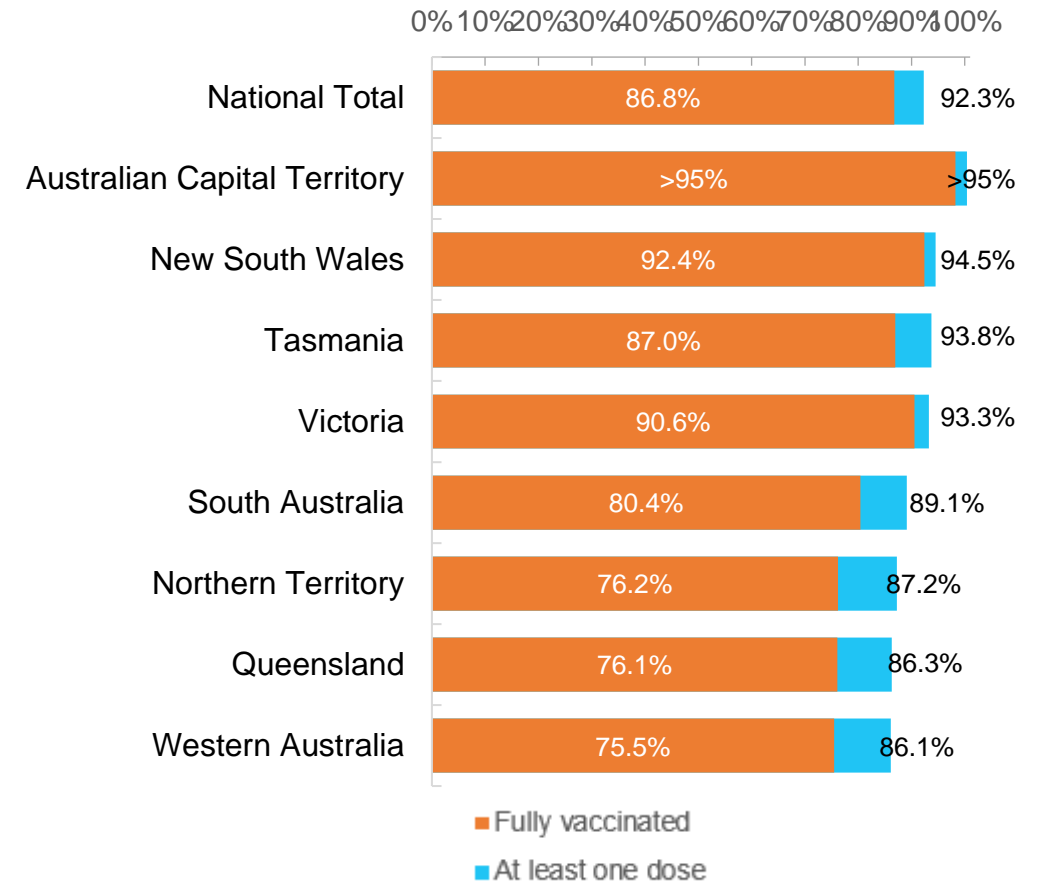


*Not an indication of percentage vaccinated, numbers will exceed 100 due to multiple doses required per person of the population. All doses are included, including those for the 12-15 cohort, and are based on vaccination provider location.

Data as at:
28 Nov 2021

Australia's COVID-19
Vaccine Roadmap

First and Second Doses by state of residence



Aboriginal and Torres Strait Islander peoples

Number of people vaccinated

Data as at:
23 Nov 2021
Updated weekly

Australia's COVID-19
Vaccine Roadmap



381,625

people over the age of 16
have had at least one dose

71.9%

of people over the age of 16
have had at least one dose



320,060

people over the age of 16
are fully vaccinated

60.2%

of people over the age of 16 are
fully vaccinated



**37,605
(52.4%)**

people aged 12-15 years
have had at least one dose

173 Aboriginal community controlled health services (ACCHS)

0#	50	27	41	12	3	21	19
ACT	NSW	NT	QLD	SA	TAS	VIC	WA

Medicare Address State ^{##}	Individuals Dose 1	Individuals Dose 1 %	Individuals Dose 2	Individuals Dose 2 %
Australian Capital Territory	4,887	89.6%	4,643	85.0%
New South Wales	136,135	84.9%	128,941	80.3%
Northern Territory	35,557	77.3%	26,333	56.9%
Queensland	92,212	64.0%	69,983	48.4%
South Australia	16,558	64.5%	12,945	50.2%
Tasmania	13,434	77.9%	12,005	69.3%
Victoria	35,134	86.8%	32,570	80.3%
Western Australia	34,563	53.8%	23,620	36.6%
Unknown/Other Territories	13,145	48.7%	9,020	33.3%
Totals	381,625	71.9%	320,060	60.2%

Source: Australian Immunisation Register

*Identifying as Aboriginal and Torres Strait Islander is optional and the estimated population may be under reported.

**Includes all Aboriginal and Torres Strait Islander peoples who have received a vaccination, not limited to those administered in an ACCHS setting

#ACCHS in the ACT are currently operating as a Commonwealth Vaccine Clinics so not included to avoid double counting

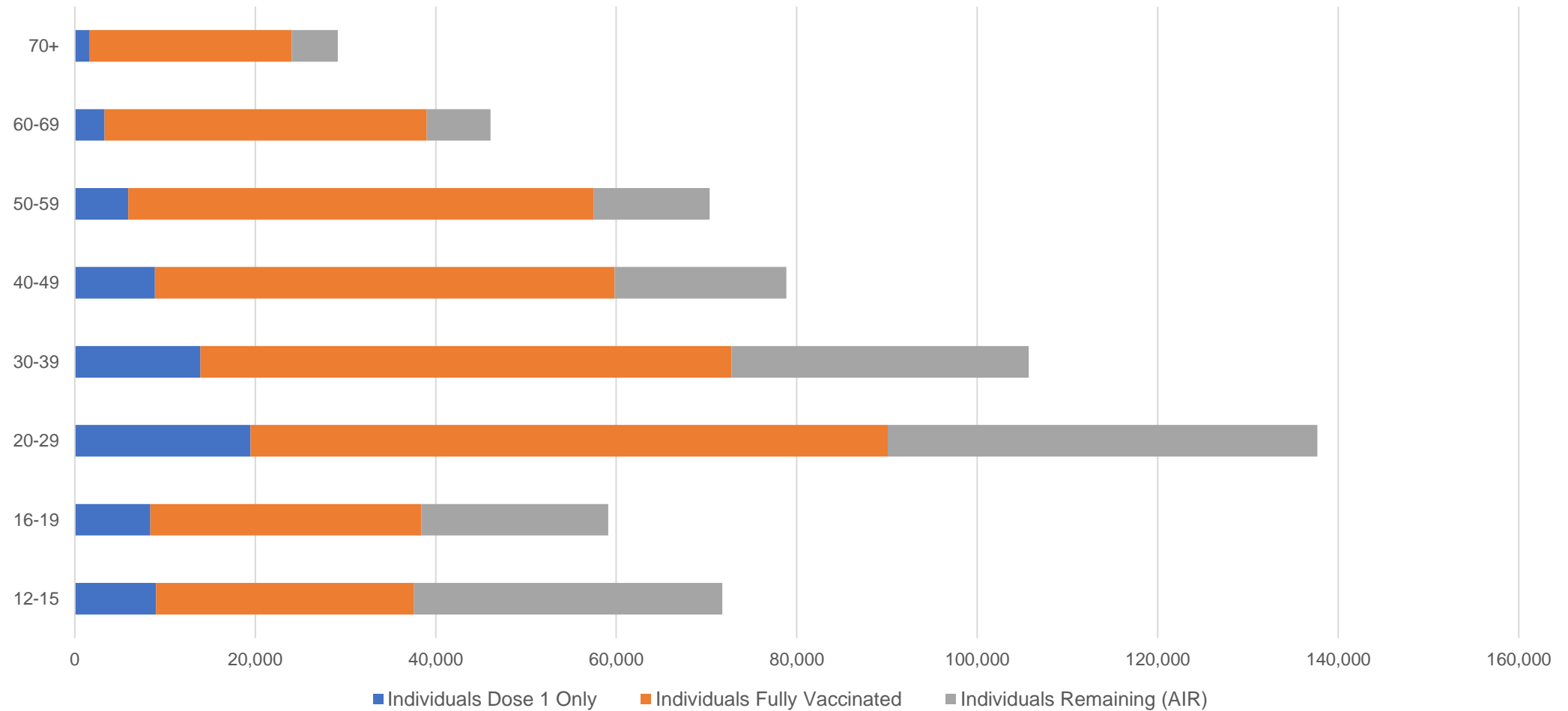
##The above table includes all identified Aboriginal and Torres Strait Islander people who are aged 16 and above by their state of residence.

Aboriginal and Torres Strait Islander peoples

Number of people vaccinated by age

Data as at:
23 Nov 2021
Updated weekly

Australia's COVID-19
Vaccine Roadmap



Source: Australian Immunisation Register

Data as at:
28 Nov 2021

Commonwealth primary care



Primary care vaccine administration sites

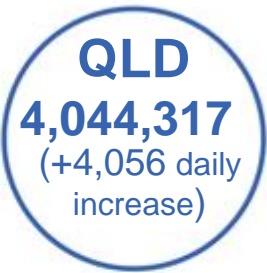
5,643	137	172	3,453
GPs	CVCs	ACCHS	Pharmacies



22,104,013 total vaccine doses administered
primary care settings as at 28 November
+ 11,454 recorded in the last 24 hours

Primary care vaccinations by provider type

	Doses administered	Daily increase	7 day increase
General Practice* includes other Commonwealth	19,788,047	8,156	277,904
Pharmacy	2,315,966	3,298	130,372



156,590 doses administered to persons residing in other territories or with missing residential information

*General practice includes Commonwealth Vaccination Clinics, Aboriginal Community Health Centres, Royal Flying Doctor Service and other Commonwealth vaccination facilities

Source: Australian Immunisation Register

Data as at:
28 Nov 2021

Commonwealth aged care and disability doses administered



1,113,956 (+ 610 last 24 hours)

Total vaccine doses administered in aged care and disability facilities as at 28 November

Number of doses administered as part of the Commonwealth aged and disability care rollout

NSW
521,407
(+37 daily increase)

VIC
206,832
(+166 daily increase)

QLD
170,119
(+124 daily increase)

WA
78,959
(+188 daily increase)

TAS
19,304
(+18 daily increase)

SA
70,075
(+53 daily increase)

ACT
14,255
(+31 daily increase)

NT
6,235
(-1 daily increase)

26,770

doses administered to persons
residing in other territories or with
missing residential information

*Sourced from the Australian Immunisation Register. Includes all persons vaccinated at participating residential aged care, disability and related industry settings.

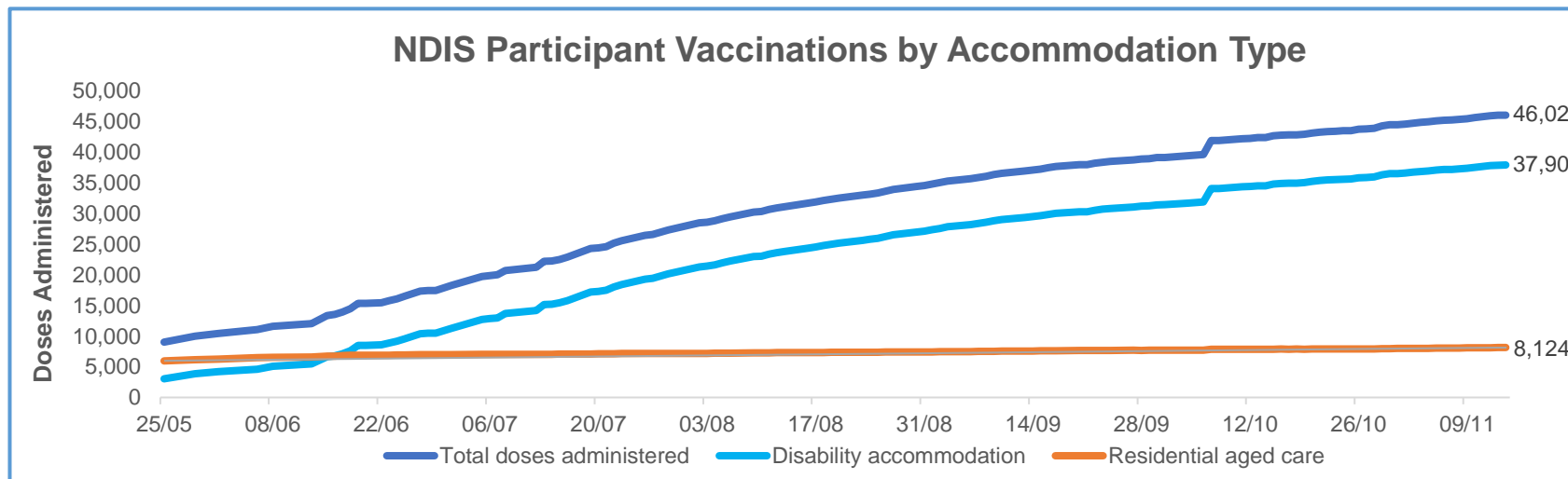
**State level breakdown indicates the residential location and may not align to the state in which the vaccination occurred.

Source: Australian Immunisation Register

Data as at:
15 Nov 2021*

Vaccination rate of people with disability and the disability workforce

Phase 1a – People with disability living in shared accommodation



	Total people with at least one dose	People fully vaccinated	Total number of individuals in cohort	Total doses administered	% People with at least one dose	% People fully vaccinated
NDIS participants living in shared accommodation **	23,650	22,378	27,603	46,028	85.7%	81.1%
NDIS screened workers ***	207,058	194,060	242,348	401,118	85.4%	80.1%



* Updates are available Monday to Friday on participants, and bi-weekly for workers, numbers may be up to four days old.

** Shared accommodation means two or more people with disability living in shared residential accommodation and NDIS participants living in Residential Aged Care accommodation as per the eligibility criteria of Phase 1a.

*** Total number of workers within the NDIS Commission Worker Screening database who have ever been successfully screened and linked to an NDIS registered provider or participant.

Source: Linkage between National Disability Insurance Agency data, NDIS Quality and Safeguards Commission data and the Australian Immunisation Register.

Residential aged care vaccination rollout

Residential aged care facilities status

100% Commonwealth facilities visited (2,557 planned sites)

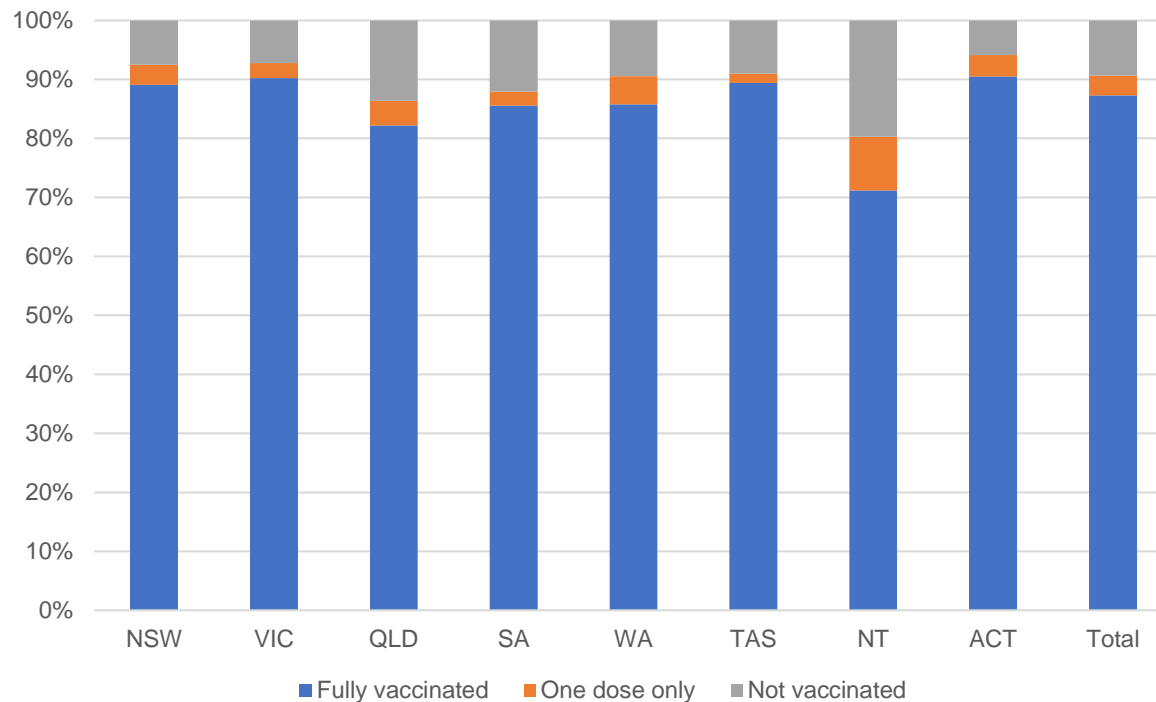
161,605 People fully vaccinated

167,792 People with at least one dose

Australia's COVID-19 Vaccine Roadmap

Data as at:
28 Nov 2021

Aged care resident vaccinations



Aged care worker vaccinations

Jurisdictions	Total workers with at least one dose	Workers fully vaccinated	% Workers with at least one dose	% Workers fully vaccinated
NSW	78,296	78,181	99.7%	99.6%
VIC	71,147	70,799	99.9%	99.4%
QLD	49,117	48,795	100.0%	99.3%
SA	27,556	26,998	100.0%	98.0%
WA	23,693	23,473	99.9%	98.9%
TAS	7,656	7,459	99.8%	97.2%
NT	847	842	100.0%	99.4%
ACT	2,994	2,976	100.0%	99.4%
Total	261,306	259,523	99.9%	99.2%

Source: My Aged Care Portal staff vaccination progress

**Resident vaccination information is reported manually by service providers

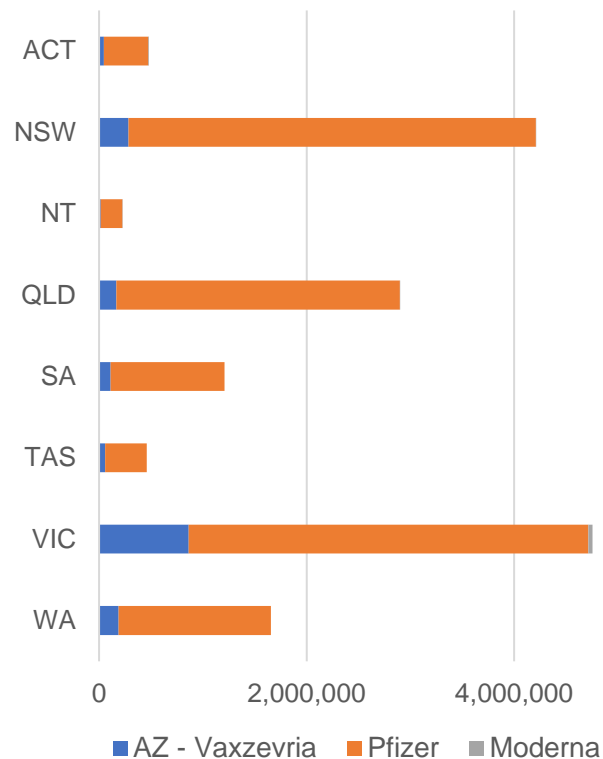
*Status updates are provided by facilities at least once per week. Reporting is updated Monday to Friday to encompass different facility updates being made on different days.

Data is sourced directly from Aged Care Service Providers and is not drawn or closely aligned with data from AIR due to inconsistencies and potential lags in uploading of records.

Data as at:
28 Nov 2021

Jurisdiction administered

Total vaccine doses administered in State and Territory clinics as at 28 November



15,888,637 total vaccine doses administered
in State and Territory clinics as at 28 November
+ **20,700** recorded in the last 24 hours
+ **225,509** recorded in the last 7 days

NSW
4,209,490
(+478 daily increase)

VIC
4,754,395
(+1,770 daily increase)

QLD
2,896,843
(+9,517 daily increase)

WA
1,655,162
(+3,383 daily increase)

TAS
458,351
(+1,208 daily increase)

SA
1,208,732
(+3,632 daily increase)

ACT
481,535
(+383 daily increase)

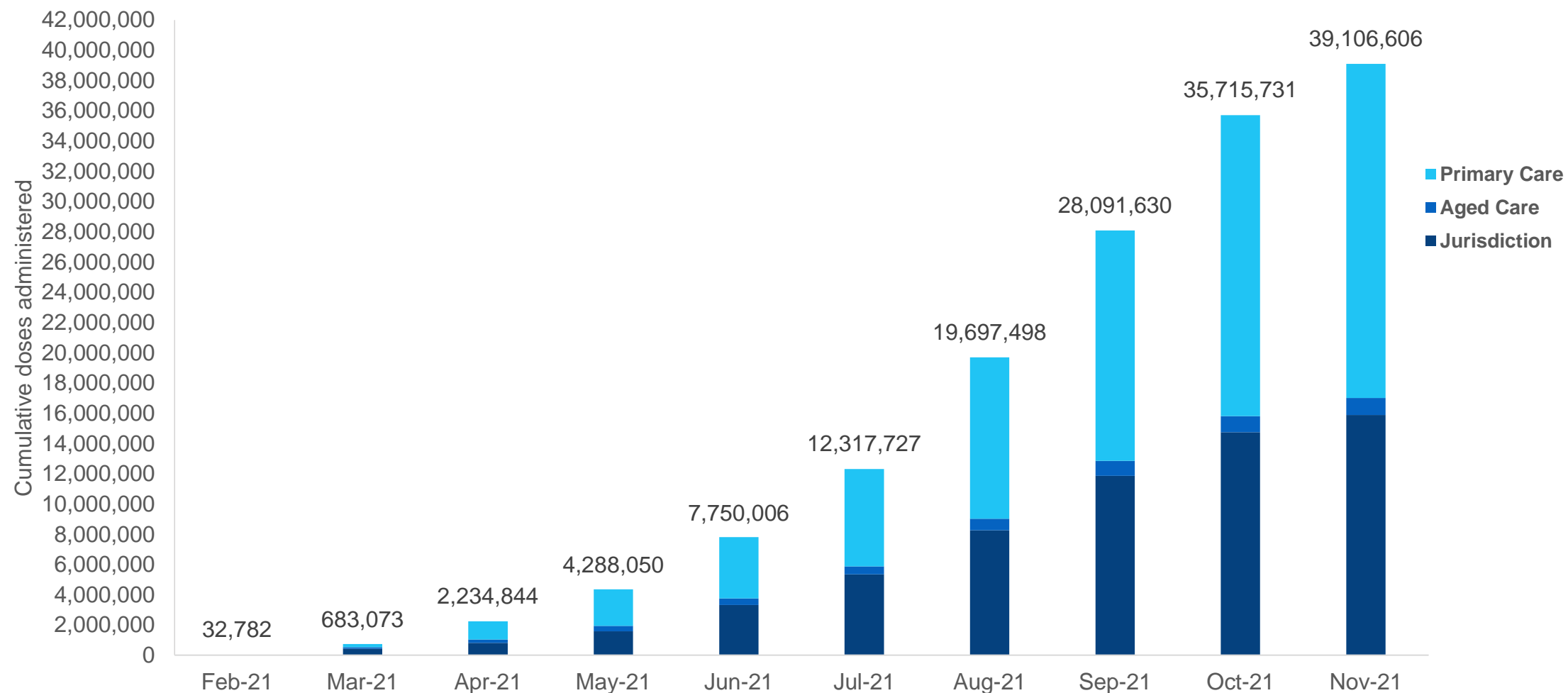
NT
224,129
(+329 daily increase)

*Sourced from the Australian Immunisation Register and self-reported data. Numbers are calculated as difference in daily cumulative reported numbers to allow for historical corrections in all self-reported data sources.

Cumulative doses administered by channel

Data as at:
28 Nov 2021

Australia's COVID-19
Vaccine Roadmap



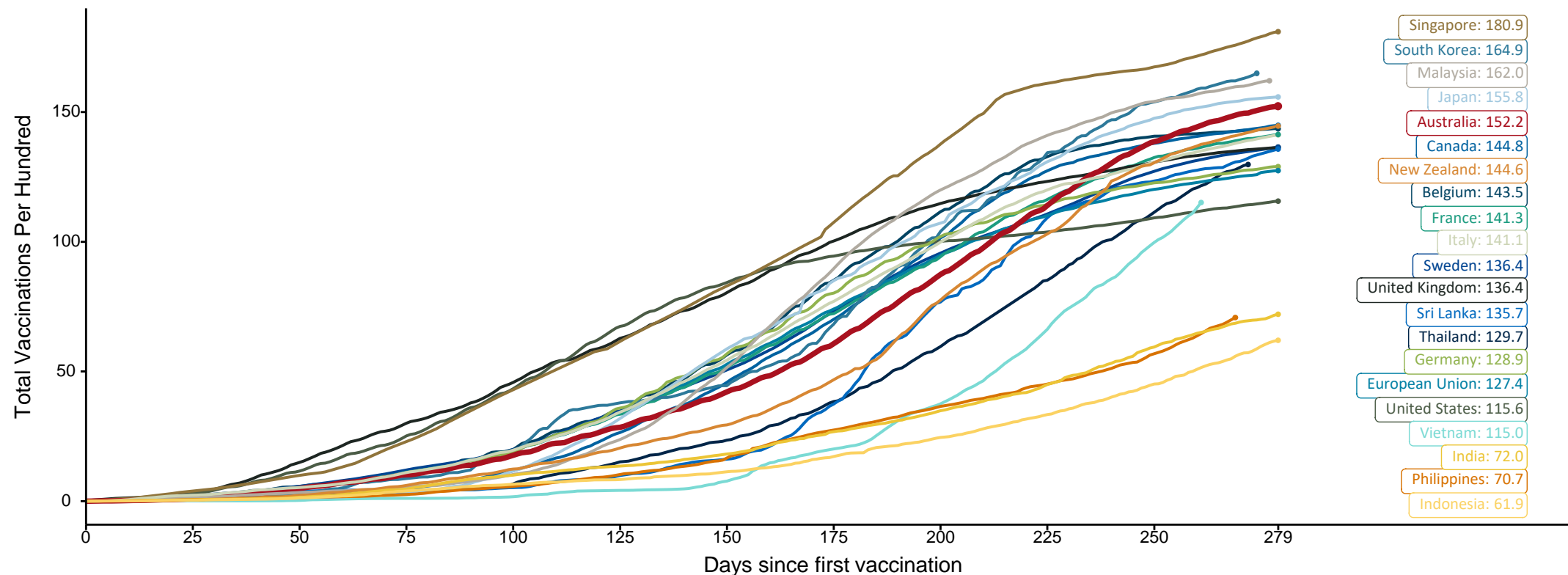
Source: Australian Immunisation Register

Doses at equivalent stages of rollout (Day 279)

Data as at:
28 Nov 2021

The x-axis is truncated at the length of Australia's vaccination program. Countries with intermittent reporting have had their doses per 100 imputed to Australia's current stage of rollout. Israel excluded as it is beyond scale of the graph

Cumulative doses administered (28 Nov): **39,106,606**

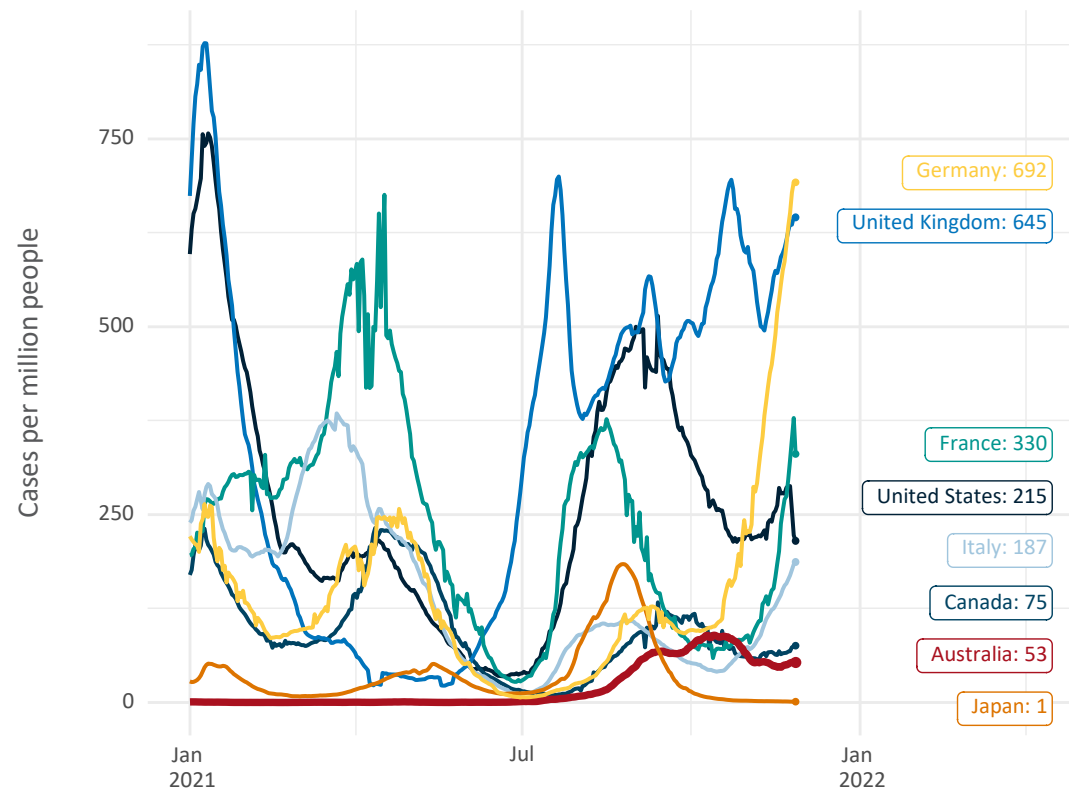


Note: From 15 September 2021, data for Australia includes all doses administered to people 12 and over. Prior to 15 September, data was for 16 and over
Source: Department of Health (Australia), Our World in Data (international)
Latest data: 28 November

International data – COVID-19

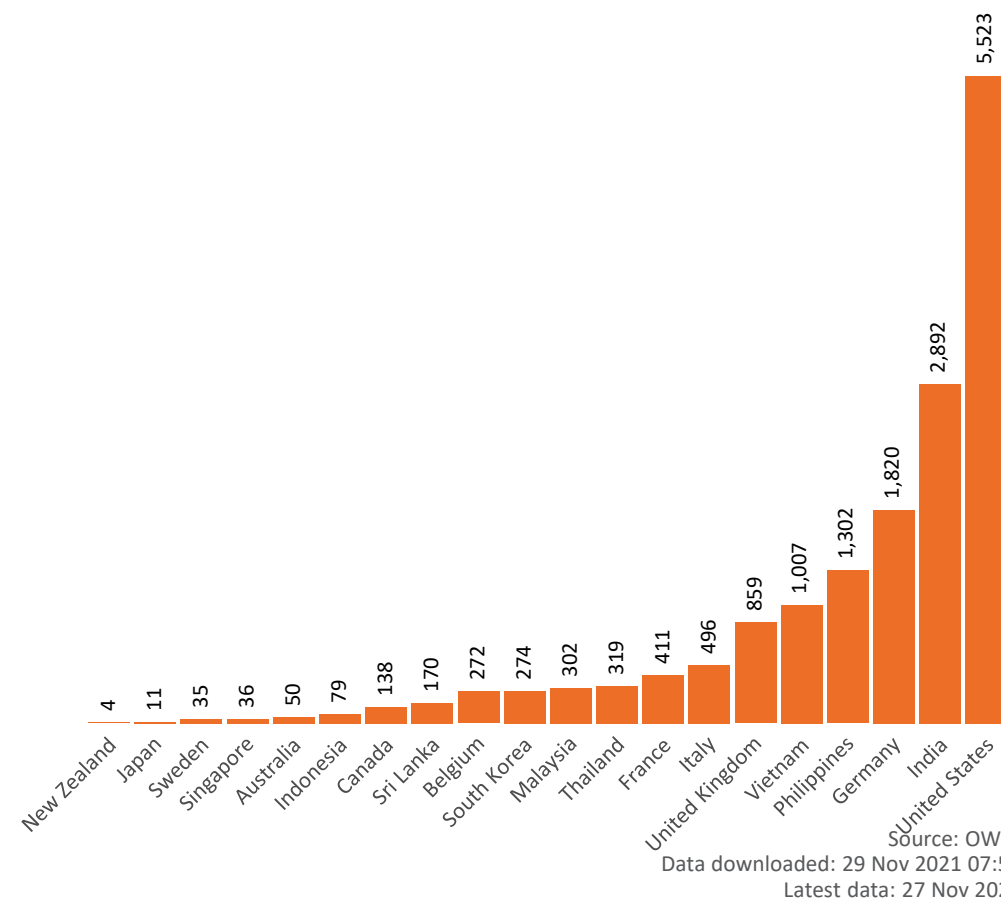
Data as at:
28 Nov 2021

New daily cases per million in 2021, Australia and G7 countries
Smoothed - 7 day average



Source: OWID
Data downloaded: 29 Nov 2021 07:57
Latest data: 27 Nov 2021

COVID-19 deaths in past 7 days - Australia and select countries



Source: OWID
Data downloaded: 29 Nov 2021 07:57
Latest data: 27 Nov 2021

Pandemic Response Payments

Australia's COVID-19
Vaccine Roadmap

Data as at midnight:
28 Nov 2021



COVID Disaster Payment:	5.88 million claims received - 2.19 million individuals paid a total of \$12.58 billion.
\$200 Income Support Payment:	351,000 claims received - 183,000 individuals paid a total of \$268.79 million.
Pandemic Leave Disaster Payment:	139,000 claims received - 119,000 individuals paid a total of \$195.80 million.



COVID Disaster Payment

assisting during a lockdown
event in a Commonwealth
hotspot.

Income Support Payment \$200

for income support
recipients who lost at
least 8 hours of work.

Pandemic Leave Disaster Payment

for those who have to
self-isolate, quarantine
or care.

For more information visit:
servicesaustralia.gov.au

COVID-19 DISASTER PAYMENTS

Victoria

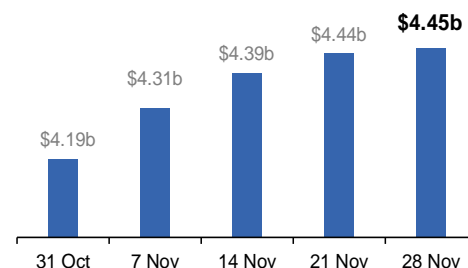
Lockdown (#6) since 6 Aug to 28 Oct
Claiming period ends 9 Dec

**745,000 people have received at least
one COVID Disaster Payment.**

\$4.45b paid out as at 28 Nov 2021.

**\$15m paid in initial and reoccurring
payments in the week ending
28 Nov 2021.**

Cumulative payments made by State since
activation on 8 Jun 2021.



Northern Territory

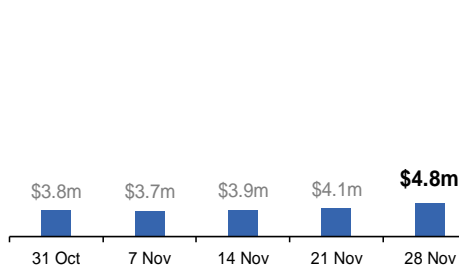
Lockdown (#3) from 16 Nov to 22 Nov
Claiming period ends 13 Dec

**6,600 people have received at least
one COVID Disaster Payment.**

\$4.8m paid out as at 28 Nov 2021.

**\$678,000 paid in initial payments in the
week ending 28 Nov 2021.**

Cumulative payments made by State since
activation on 25 Aug 2021.



New South Wales

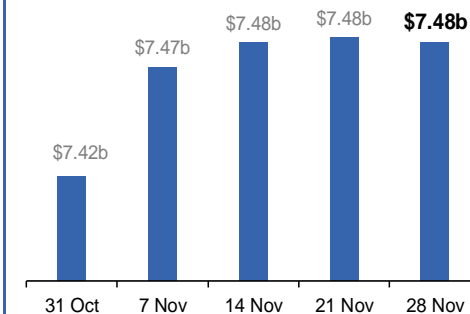
Lockdown from 24 Jun to 10 Oct
Claiming period ended 27 Nov

**1.08m people have received at least
one COVID Disaster Payment.**

\$7.48b paid out as at 28 Nov 2021.

**\$754,000 paid in initial and reoccurring
payments in the week ending
28 Nov 2021.**

Cumulative payments made by State since
activation on 1 Jul 2021.



Australian Capital Territory

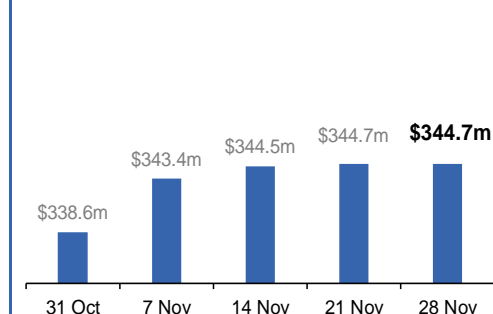
Lockdown since 12 Aug to 14 Oct
Claiming period ended 25 Nov

**65,000 people have received at least
one COVID Disaster Payment.**

\$344.7m paid out as at 28 Nov 2021.

**\$30,000 paid in initial and reoccurring
payments in the week ending
28 Nov 2021.**

Cumulative payments made by State since
activation on 20 Aug 2021.



Pandemic Response Payments (continued)

Data as at midnight:
28 Nov 2021

COVID-19 DISASTER PAYMENTS

Tasmania

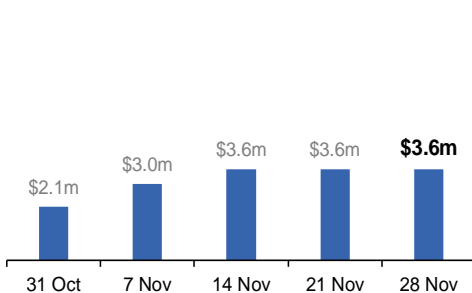
Lockdown from 15 Oct to 18 Oct
Claiming period ended 12 Nov

6,900 people have received at least one COVID Disaster Payment.

\$3.6m paid out as at 28 Nov 2021.

\$2,000 paid in initial payments in the week ending 28 Nov 2021.

Cumulative payments made by State since activation on 22 Oct 2021.



Queensland

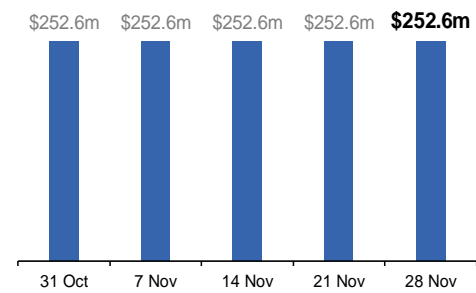
Lockdown from 31 Jul to 11 Aug
Claiming period ended 28 Aug

196,000 people have received at least one COVID Disaster Payment.

\$252.6m paid out as at 28 Nov 2021.

\$14,000 paid in initial and reoccurring payments in the week ending 28 Nov 2021.

Cumulative payments made by State since activation on 7 Aug 2021.



South Australia

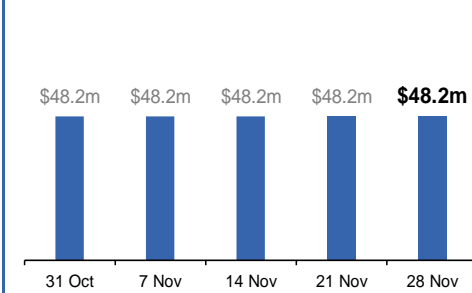
Lockdown from 21 to 27 Jul
Claiming period ended 17 Aug

86,000 people have received at least one COVID Disaster Payment.

\$48.2m paid out as at 28 Nov 2021.

Nil payments made in the week ending 28 Nov 2021.

Cumulative payments made by State since activation on 28 Jul 2021.



Administration and Utilisation

Doses as at Week 40

	Ordered	Available	Administered	Available minus Administered	Estimated Dose Utilisation %
	Up to Week 40	Delivered up to Week 39 including redistributions	Up to Week 40		(see note)
NSW	4,761,410	4,761,410	4,209,490	551,920	98%
VIC	5,767,154	5,767,154	4,754,395	1,012,759	92%
QLD	3,499,870	3,430,130	2,896,843	533,287	94%
WA	1,840,438	1,834,468	1,655,162	179,306	Fully utilised
SA	1,617,790	1,576,090	1,208,732	367,358	87%
TAS	493,330	475,780	458,351	17,429	Fully utilised
NT	305,504	274,456	224,129	50,327	92%
ACT	502,856	502,856	481,535	21,321	Fully utilised
Jurisdiction delivered total	18,788,352	18,622,344	15,888,637	2,733,707	95%
Commonwealth Aged Care & Disability	1,139,992	1,121,446	1,113,956	7,490	N/A
Commonwealth Primary Care & Other	29,631,750	29,127,470	22,104,013	7,023,457	86%
Total	49,560,094	48,871,260	39,106,606	9,764,654	90%

About this data

- Ordered – Total doses delivered to sites. Based on logistics provider data. This figure includes doses allocated for administration in the coming week.
- Available – total doses that could have been administered to date, less doses re-distributed from States & Territories to Primary Care or Aged Care & Disability (i.e. does not include those deliveries recently received, and intended for use in the coming week).
- Administered – Doses administered as at 28 November 2021.
- The dose utilisation is calculated based on the total doses administered and a small % wastage in line with international standards in relation to total available doses.
- For Aged Care & Disability, the doses available for administration is for the full period (Weeks 1-40).
- Aged Care & Disability utilisation is not provided as the in-reach rollout is demand-based, with vaccines ordered based on resident numbers.