



Australian Government
Operation COVID Shield

COVID-19 Vaccine Roll-out

26 November 2021

Data as at:
25 Nov 2021

Total vaccine doses



38,917,851 total vaccine doses administered nationally as at 25 November
+105,908 recorded in the last 24 hours



18,986,280

people have had at least one dose

92.1%

of people over the age of 16 have had at least one dose



17,792,522

people are fully vaccinated

86.3%

of people over the age of 16 are fully vaccinated



390,625

people over the age of 16 who have received more than two doses

NSW
12,900,336
(+13,798 daily increase)

VIC
10,632,643
(+20,478 daily increase)

QLD
7,106,075
(+32,081 daily increase)

WA
3,577,905
(+17,576 daily increase)

TAS
835,386
(+3,880 daily increase)

SA
2,537,335
(+14,190 daily increase)

ACT
952,623
(+2,057 daily increase)

NT
375,548
(+1,848 daily increase)

*Administration state breakdown indicates state in which a vaccine was administered

**Overall dose count includes instances of more than two doses per person in a small number of cases.

Data as at:
25 Nov 2021

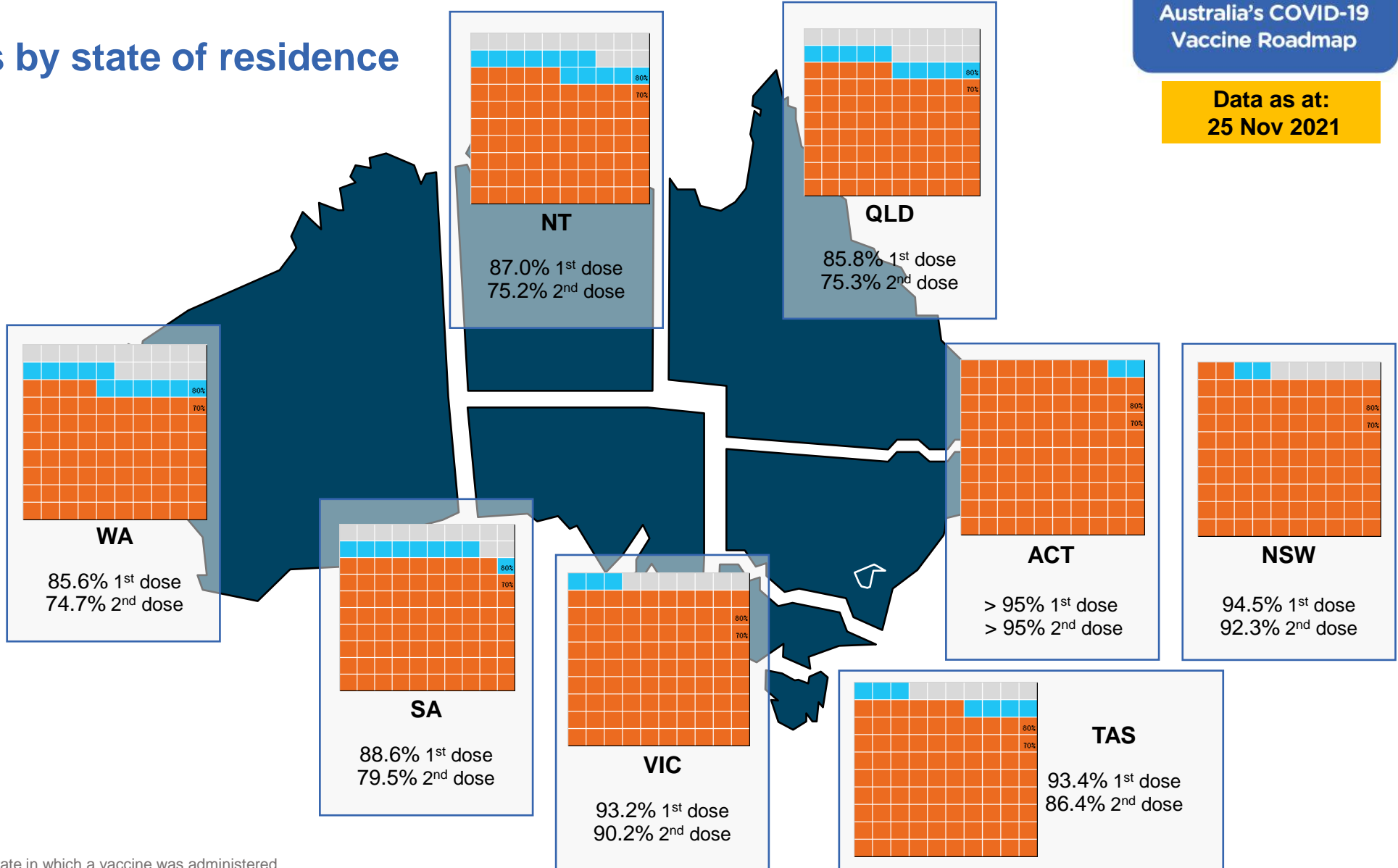
Vaccinations by state of residence

First doses

Age	Today	4 weeks ago	8 weeks ago
16+	92.1%	88.2%	79.3%
50+	>95%	>95%	90.4%
70+	>95%	>95%	>95%

Fully vaccinated

Age	Today	4 weeks ago	8 weeks ago
16+	86.3%	76.7%	56.1%
50+	93.2%	85.9%	73.2%
70+	>95%	90.7%	80.9%



*Residential state may differ from the state in which a vaccine was administered

Commonwealth and Jurisdiction vaccine doses administered

Data as at:
25 Nov 2021



38,917,851 total vaccine doses administered nationally as at 25 November
+ **105,908** recorded in the last 24 hours

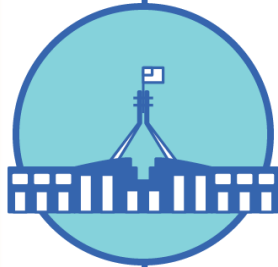


15,814,933

doses administered by state and territory facilities

+ **30,044**

recorded in the last 24 hours



23,102,918

doses administered by commonwealth facilities

+ **75,864**

recorded in the last 24 hours

21,994,139 total vaccine doses administered in primary care settings

1,108,779 total vaccine doses administered in aged care and disability settings

NSW	Jurisdictions	Commonwealth
Cumulative	4,205,317	8,695,019
Daily increase	2,190	11,608

VIC	Jurisdictions	Commonwealth
Cumulative	4,744,733	5,887,910
Daily increase	4,422	16,056

QLD	Jurisdictions	Commonwealth
Cumulative	2,870,044	4,236,031
Daily increase	9,015	23,066

WA	Jurisdictions	Commonwealth
Cumulative	1,642,624	1,935,281
Daily increase	4,904	12,672

TAS	Jurisdictions	Commonwealth
Cumulative	454,965	380,421
Daily increase	1,615	2,265

SA	Jurisdictions	Commonwealth
Cumulative	1,195,707	1,341,628
Daily increase	5,709	8,481

ACT	Jurisdictions	Commonwealth
Cumulative	479,415	473,208
Daily increase	1,375	682

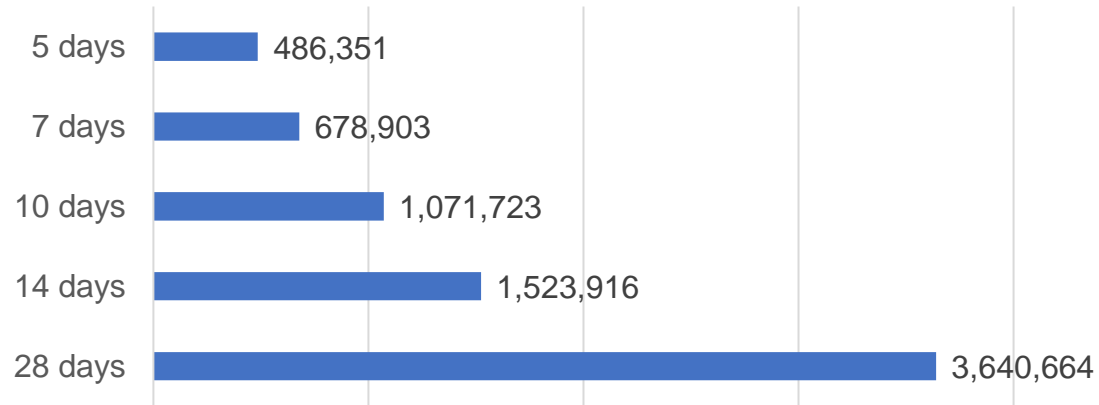
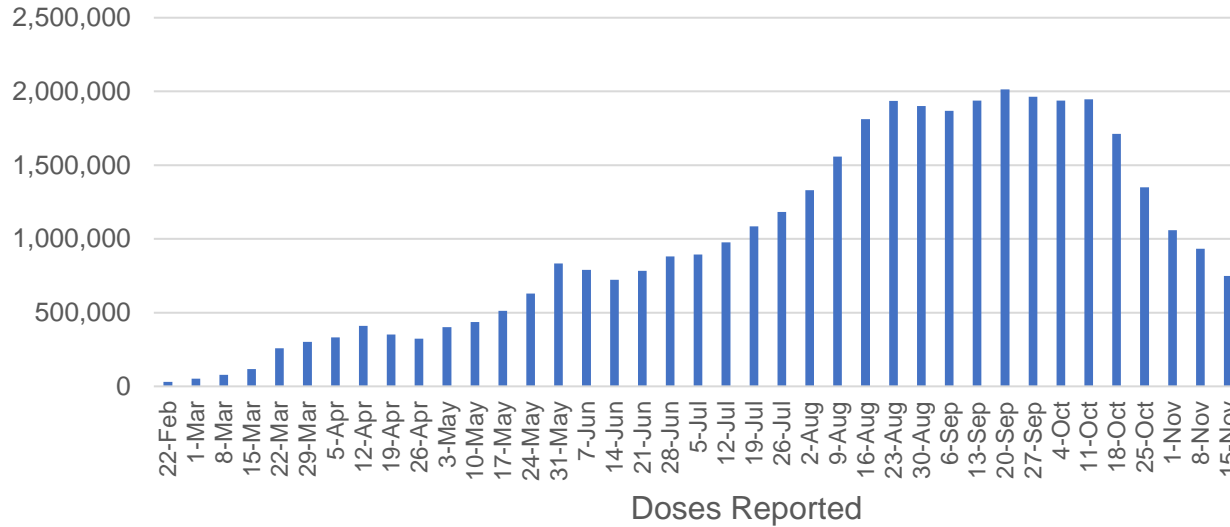
NT	Jurisdictions	Commonwealth
Cumulative	222,128	153,420
Daily increase	814	1,034

Vaccine milestone charts

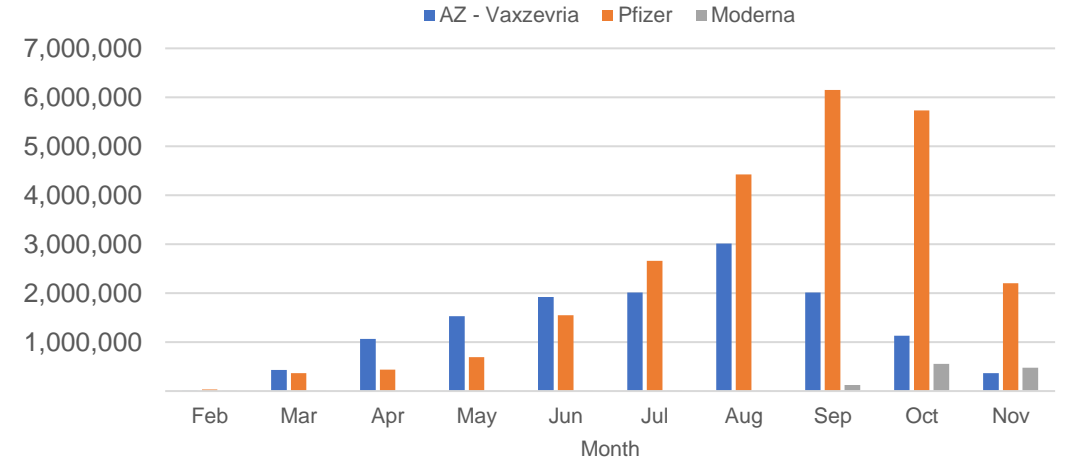
Data as at:
25 Nov 2021

Australia's COVID-19
Vaccine Roadmap

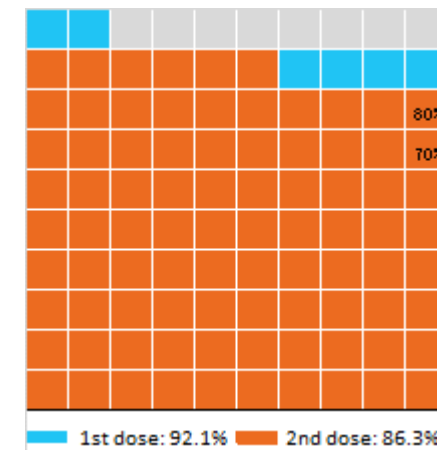
Doses Administered by Week



Doses by administration month and vaccine type



Eligible population percentage coverage



*Each square represents 1% of the national population. Squares are filled as milestones are achieved.

*Sourced from the Australian Immunisation Register.

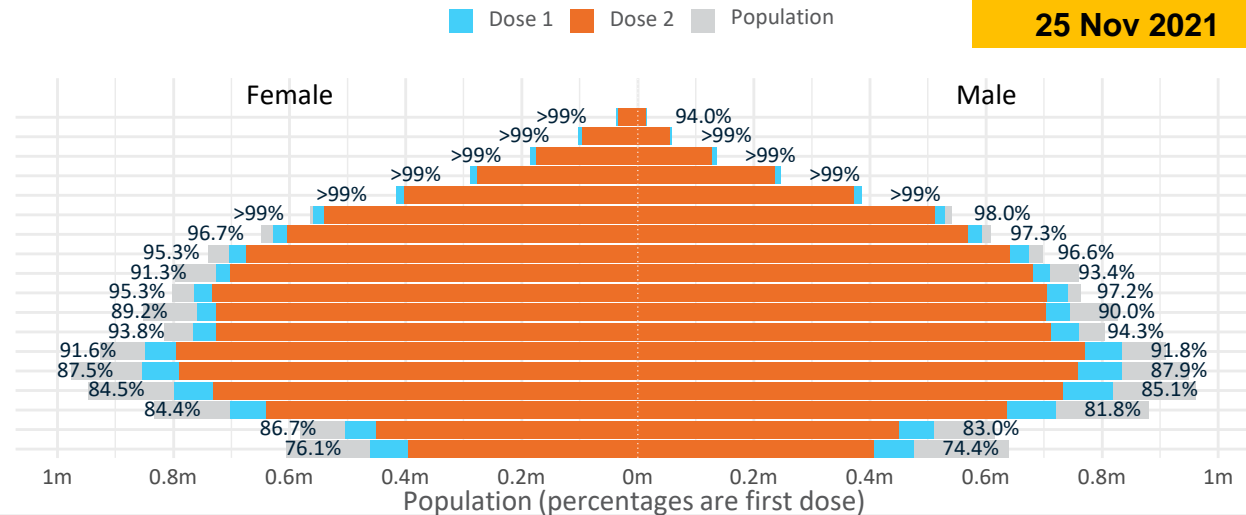
Doses by age and sex

First and second doses by age and sex

Data as at: 25 Nov 2021

	16+	50+	70+	12-15
Dose 1	92.08% (18,986,280 doses / 20,619,959 people)	97.19% (8,504,042 doses / 8,749,703 people)	>99% (2,959,795 doses / 2,934,706 people)	75.24% (936,015 doses / 1,243,990 people)
Dose 2	86.29% (17,792,522 doses / 20,619,959 people)	93.15% (8,150,648 doses / 8,749,703 people)	96.81% (2,840,996 doses / 2,934,706 people)	64.43% (801,532 doses / 1,243,990 people)

Age	Dose 1	Dose 2
95+	52,256 (98.8%)	47,560 (89.9%)
90-94	161,003 (>99%)	150,387 (94.9%)
85-89	320,134 (>99%)	303,352 (95.9%)
80-84	534,934 (>99%)	513,183 (97.1%)
75-79	801,728 (>99%)	774,473 (>99%)
70-74	1,089,740 (98.6%)	1,052,041 (95.2%)
65-69	1,221,561 (97.1%)	1,172,037 (93.2%)
60-64	1,379,297 (96.0%)	1,315,585 (91.6%)
55-59	1,437,171 (92.4%)	1,382,431 (88.9%)
50-54	1,506,218 (96.3%)	1,439,599 (92.0%)
45-49	1,504,573 (89.7%)	1,428,739 (85.2%)
40-44	1,526,780 (94.2%)	1,438,490 (88.8%)
35-39	1,686,510 (91.9%)	1,569,159 (85.5%)
30-34	1,694,721 (88.1%)	1,553,710 (80.8%)
25-29	1,626,834 (85.3%)	1,470,748 (77.1%)
20-24	1,428,631 (83.4%)	1,280,299 (74.8%)
16-19	1,014,189 (84.8%)	900,729 (75.3%)
12-15	936,015 (75.2%)	801,532 (64.4%)

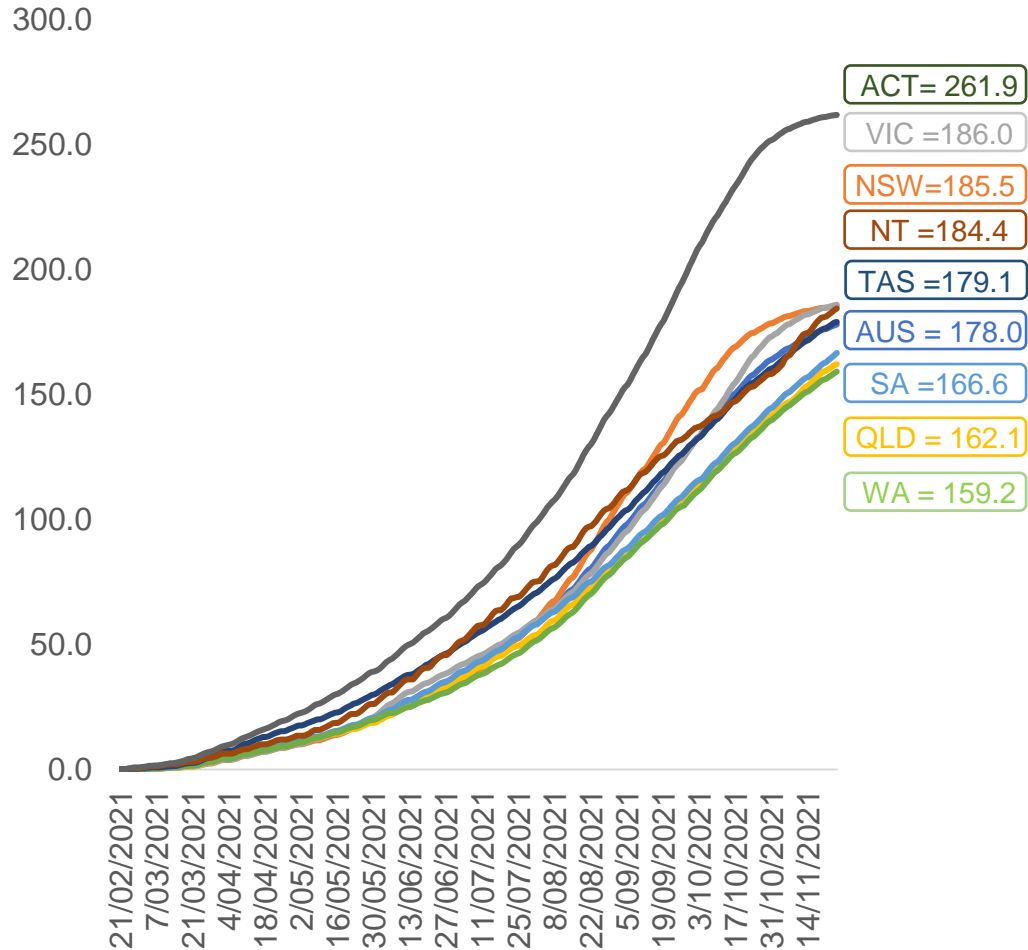


	AUS	ACT	NSW	NT	QLD	SA	TAS	VIC	WA
16 and over - dose 1	18,986,280	345,317	6,203,925	165,816	3,529,178	1,275,814	411,096	5,040,089	1,809,595
16 and over - dose 2	17,792,522	337,353	6,057,667	143,373	3,097,762	1,145,126	380,120	4,879,523	1,578,842
16 and over - population	20,619,959*	344,037	6,565,651	190,571	4,112,707	1,440,400	440,172	5,407,574	2,114,978
16 and over % with dose 1	92.08%	>99%	94.49%	87.01%	85.81%	88.57%	93.39%	93.20%	85.56%
16 and over % with dose 2	86.29%	98.06%	92.26%	75.23%	75.32%	79.50%	86.36%	90.23%	74.65%
50 and over - dose 1	8,504,042	133,615	2,765,406	55,782	1,646,652	639,062	211,354	2,166,571	828,726
50 and over - dose 2	8,150,648	131,133	2,714,547	51,352	1,537,266	595,061	199,371	2,108,961	763,479
50 and over - population	8,749,703	127,802	2,807,793	62,280	1,758,855	674,384	220,036	2,211,211	885,370
50 and over % with dose 1	97.19%	>99%	98.49%	89.57%	93.62%	94.76%	96.05%	97.98%	93.60%
50 and over % with dose 2	93.15%	>99%	96.68%	82.45%	87.40%	88.24%	90.61%	95.38%	86.23%
70 and over - dose 1	2,959,795	43,534	976,548	11,417	568,091	239,256	77,650	746,542	275,051
70 and over - dose 2	2,840,996	42,553	955,064	10,632	537,388	223,813	73,062	723,451	256,052
70 and over - population	2,934,706	39,946	962,606	12,343	577,767	240,514	77,155	743,519	280,281
70 and over % with dose 1	>99%	>99%	>99%	92.50%	98.33%	>99%	>99%	>99%	98.13%
70 and over % with dose 2	96.81%	>99%	>99%	86.14%	93.01%	93.06%	94.70%	97.30%	91.36%
12 to 15 - dose 1	936,015	19,656	316,875	9,287	170,307	54,853	18,841	265,265	73,710
12 to 15 - dose 2	801,532	18,791	297,489	6,735	128,393	39,325	14,904	239,454	51,187
12 to 15 - population	1,243,990	19,693	390,330	13,060	270,146	82,747	26,308	308,611	132,869
12 to 15 % with dose 1	75.24%	>99%	81.18%	71.11%	63.04%	66.29%	71.62%	85.95%	55.48%
12 to 15 % with dose 2	64.43%	95.42%	76.21%	51.57%	47.53%	47.52%	56.65%	77.59%	38.52%

*National population will not equal sum of listed jurisdictions due to a small number of people counted in national population residing in some 'other' territories. Sum of state doses will not add to national total as some records are unable to be geocoded to a State or Territory. Doses sourced from Australian Immunisation Register, population from ABS ERP June 2020

Vaccinations by location

Cumulative total doses administered vs eligible state populations*

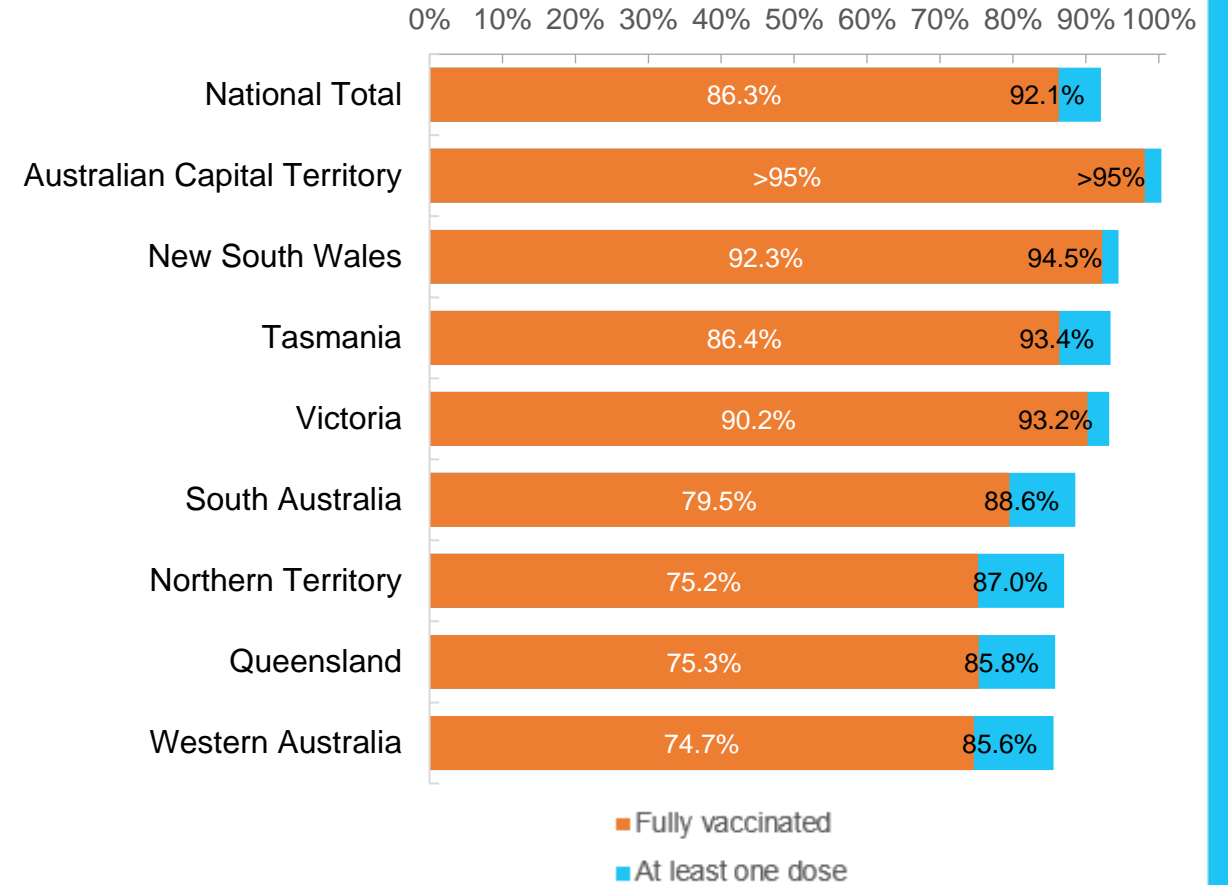


*Not an indication of percentage vaccinated, numbers will exceed 100 due to multiple doses required per person of the population. All doses are included, including those for the 12-15 cohort, and are based on vaccination provider location.

Data as at:
25 Nov 2021

Australia's COVID-19
Vaccine Roadmap

First and Second Doses by state of residence



Aboriginal and Torres Strait Islander peoples

Number of people vaccinated

Data as at:
23 Nov 2021
Updated weekly

Australia's COVID-19
Vaccine Roadmap



381,625

people over the age of 16
have had at least one dose

71.9%

of people over the age of 16
have had at least one dose



320,060

people over the age of 16
are fully vaccinated

60.2%

of people over the age of 16 are
fully vaccinated



**37,605
(52.4%)**

people aged 12-15 years
have had at least one dose

173 Aboriginal community controlled health services (ACCHS)

0#	50	27	41	12	3	21	19
ACT	NSW	NT	QLD	SA	TAS	VIC	WA

Medicare Address State ^{##}	Individuals Dose 1	Individuals Dose 1 %	Individuals Dose 2	Individuals Dose 2 %
Australian Capital Territory	4,887	89.6%	4,643	85.0%
New South Wales	136,135	84.9%	128,941	80.3%
Northern Territory	35,557	77.3%	26,333	56.9%
Queensland	92,212	64.0%	69,983	48.4%
South Australia	16,558	64.5%	12,945	50.2%
Tasmania	13,434	77.9%	12,005	69.3%
Victoria	35,134	86.8%	32,570	80.3%
Western Australia	34,563	53.8%	23,620	36.6%
Unknown/Other Territories	13,145	48.7%	9,020	33.3%
Totals	381,625	71.9%	320,060	60.2%

Source: Australian Immunisation Register

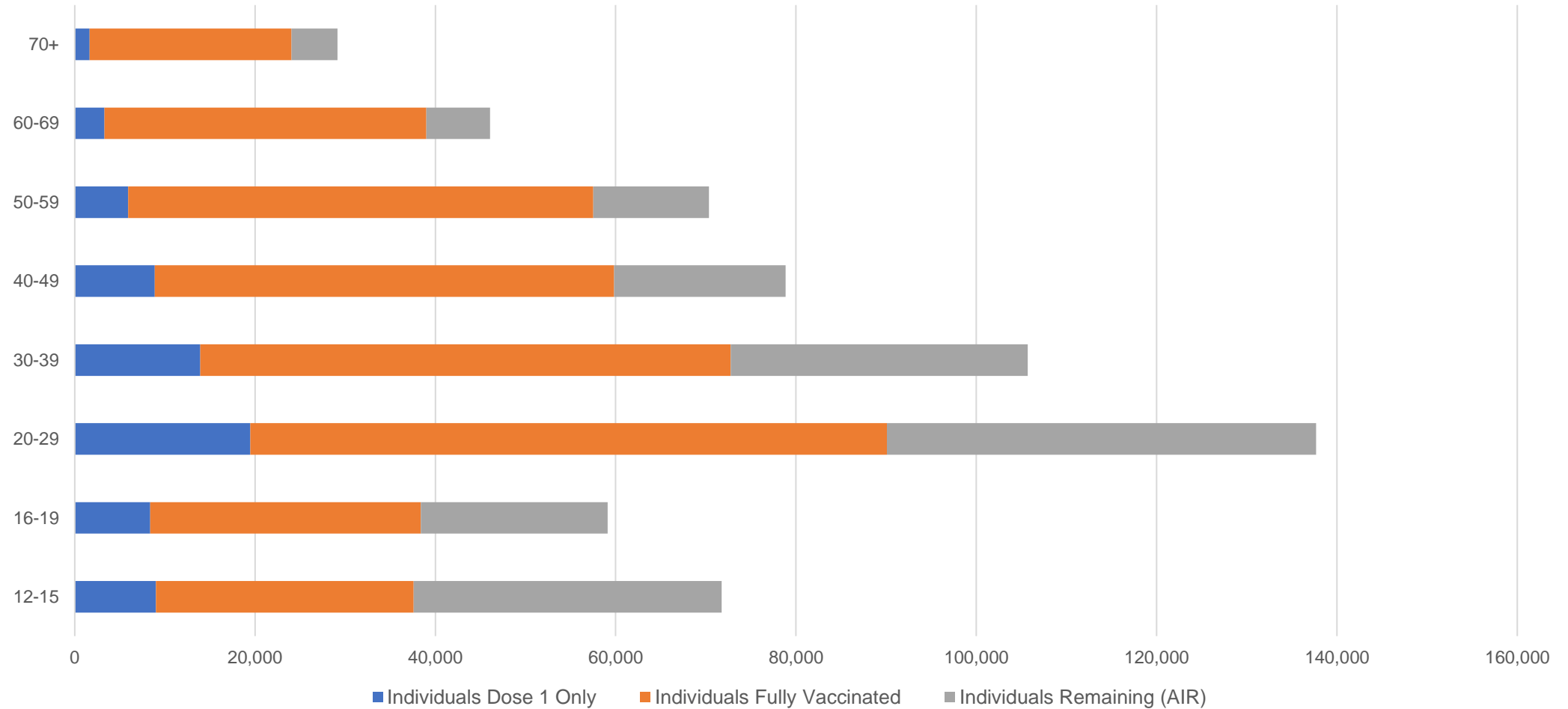
*Identifying as Aboriginal and Torres Strait Islander is optional and the estimated population may be under reported.
 **Includes all Aboriginal and Torres Strait Islander peoples who have received a vaccination, not limited to those administered in an ACCHS setting
 #ACCHS in the ACT are currently operating as a Commonwealth Vaccine Clinics so not included to avoid double counting
 ##The above table includes all identified Aboriginal and Torres Strait Islander people who are aged 16 and above by their state of residence.

Aboriginal and Torres Strait Islander peoples

Number of people vaccinated by age

Data as at:
23 Nov 2021
Updated weekly

Australia's COVID-19
Vaccine Roadmap



Source: Australian Immunisation Register

Data as at:
25 Nov 2021

Commonwealth primary care



Primary care vaccine administration sites

5,638	137	173	3,447
GPs	CVCs	ACCHS	Pharmacies



21,994,139 total vaccine doses administered
primary care settings as at 25 November
+ 72,528 recorded in the last 24 hours

Primary care vaccinations by provider type

	Doses administered	Daily increase	7 day increase
General Practice* includes other Commonwealth	19,713,794	48,873	295,733
Pharmacy	2,280,345	23,655	137,830



155,286 doses administered to persons residing in other territories or with missing residential information

*General practice includes Commonwealth Vaccination Clinics, Aboriginal Community Health Centres, Royal Flying Doctor Service and other Commonwealth vaccination facilities

Source: Australian Immunisation Register

Data as at:
25 Nov 2021

Commonwealth aged care and disability doses administered



1,108,779 (+ 3,336 last 24 hours)

Total vaccine doses administered in aged care and disability facilities as at 25 November

Number of doses administered as part of the Commonwealth aged and disability care rollout

NSW
520,611
(+525 daily increase)

VIC
205,638
(+633 daily increase)

QLD
168,877
(+678 daily increase)

WA
78,435
(+355 daily increase)

TAS
18,967
(+298 daily increase)

SA
69,156
(+481 daily increase)

ACT
14,191
(+138 daily increase)

NT
6,218
(+1 daily increase)

26,686

doses administered to persons residing in other territories or with missing residential information

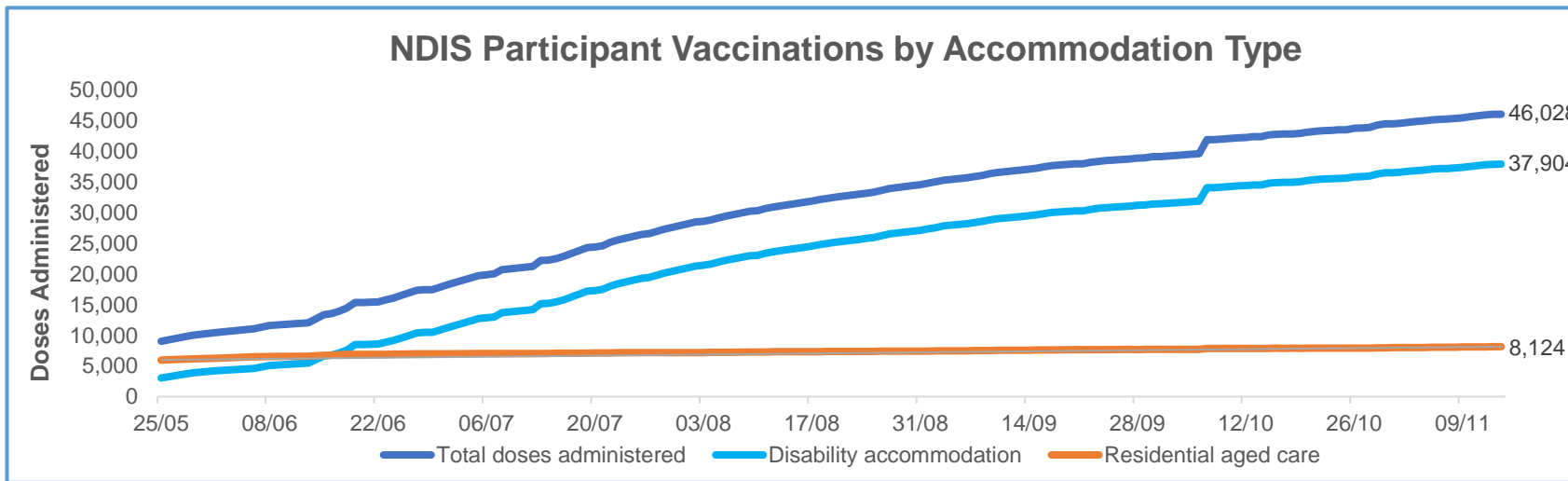
*Sourced from the Australian Immunisation Register. Includes all persons vaccinated at participating residential aged care, disability and related industry settings.
**State level breakdown indicates the residential location and may not align to the state in which the vaccination occurred.

Source: Australian Immunisation Register

Data as at:
15 Nov 2021*

Vaccination rate of people with disability and the disability workforce

Phase 1a – People with disability living in shared accommodation



	Total people with at least one dose	People fully vaccinated	Total number of individuals in cohort	Total doses administered	% People with at least one dose	% People fully vaccinated
NDIS participants living in shared accommodation **	23,650	22,378	27,603	46,028	85.7%	81.1%
NDIS screened workers ***	207,058	194,060	242,348	401,118	85.4%	80.1%



* Updates are available Monday to Friday on participants, and bi-weekly for workers, numbers may be up to four days old.

** Shared accommodation means two or more people with disability living in shared residential accommodation and NDIS participants living in Residential Aged Care accommodation as per the eligibility criteria of Phase 1a.

*** Total number of workers within the NDIS Commission Worker Screening database who have ever been successfully screened and linked to an NDIS registered provider or participant.

Source: Linkage between National Disability Insurance Agency data, NDIS Quality and Safeguards Commission data and the Australian Immunisation Register.

Residential aged care vaccination rollout

Residential aged care facilities status

100%

Commonwealth facilities visited (2,556 planned sites)

161,454

People fully vaccinated

167,610

People with at least one dose

Data as at: 25 Nov 2021

Aged care resident vaccinations



Aged care worker vaccinations

Jurisdictions	Total workers with at least one dose	Workers fully vaccinated	% Workers with at least one dose	% Workers fully vaccinated
NSW	78,153	78,038	99.6%	99.4%
VIC	71,156	70,712	100.0%	99.4%
QLD	49,105	48,781	100.0%	99.3%
SA	27,588	26,994	100.0%	97.8%
WA	23,715	23,495	100.0%	99.1%
TAS	7,657	7,460	99.8%	97.2%
NT	847	842	100.0%	99.4%
ACT	2,994	2,976	100.0%	99.4%
Total	261,215	259,298	99.9%	99.1%

Source: My Aged Care Portal staff vaccination progress

**Resident vaccination information is reported manually by service providers

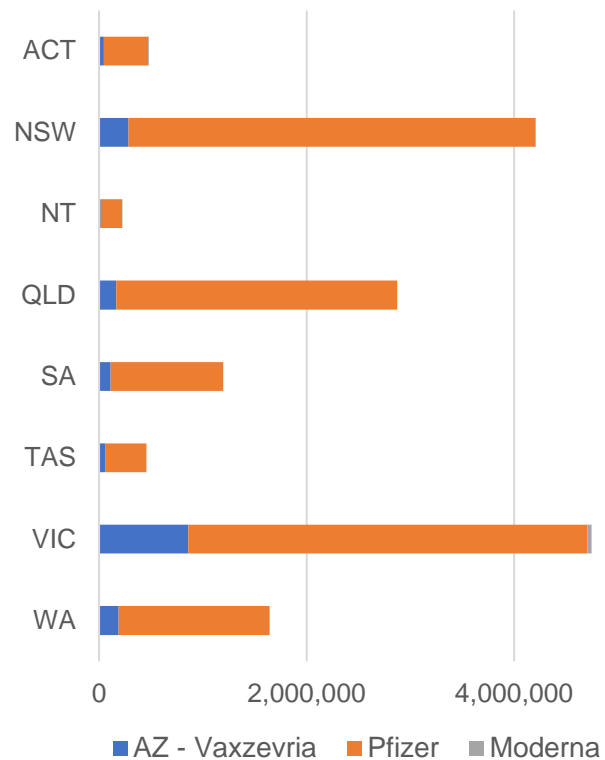
*Status updates are provided by facilities at least once per week. Reporting is updated Monday to Friday to encompass different facility updates being made on different days.

Data is sourced directly from Aged Care Service Providers and is not drawn or closely aligned with data from AIR due to inconsistencies and potential lags in uploading of records.

Data as at:
25 Nov 2021

Jurisdiction administered

Total vaccine doses administered in State and Territory clinics as at 25 November



15,814,933 total vaccine doses administered in State and Territory clinics as at 25 November
 + **30,044** recorded in the last 24 hours
 + **226,696** recorded in the last 7 days

NSW
4,205,317
 (+2,190 daily increase)

VIC
4,744,733
 (+4,422 daily increase)

QLD
2,870,044
 (+9,015 daily increase)

WA
1,642,624
 (+4,904 daily increase)

TAS
454,965
 (+1,615 daily increase)

SA
1,195,707
 (+5,709 daily increase)

ACT
479,415
 (+1,375 daily increase)

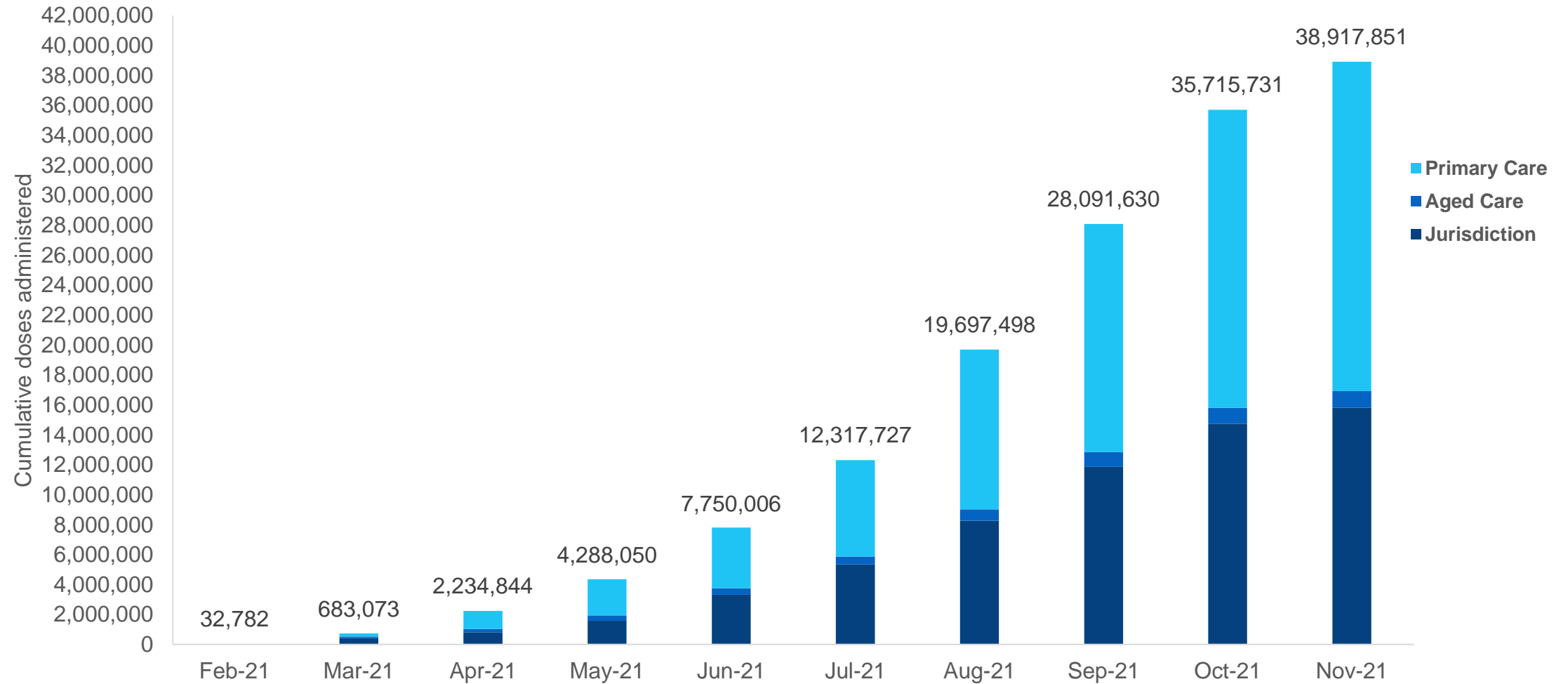
NT
222,128
 (+814 daily increase)

*Sourced from the Australian Immunisation Register and self-reported data. Numbers are calculated as difference in daily cumulative reported numbers to allow for historical corrections in all self-reported data sources.

Source: Australian Immunisation Register

Data as at:
25 Nov 2021

Cumulative doses administered by channel



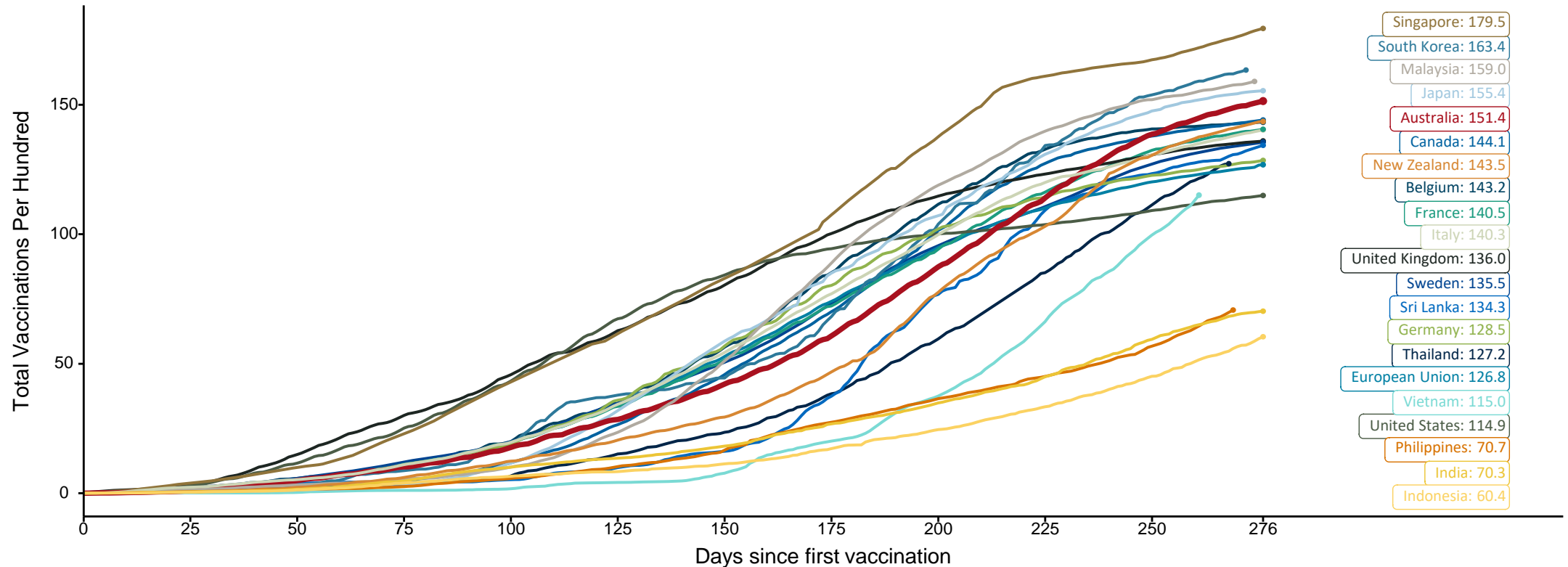
Source: Australian Immunisation Register

Doses at equivalent stages of rollout (Day 276)

Data as at:
25 Nov 2021

The x-axis is truncated at the length of Australia's vaccination program. Countries with intermittent reporting have had their doses per 100 imputed to Australia's current stage of rollout. Israel excluded as it is beyond scale of the graph

Cumulative doses administered (25 Nov): **38,917,851**

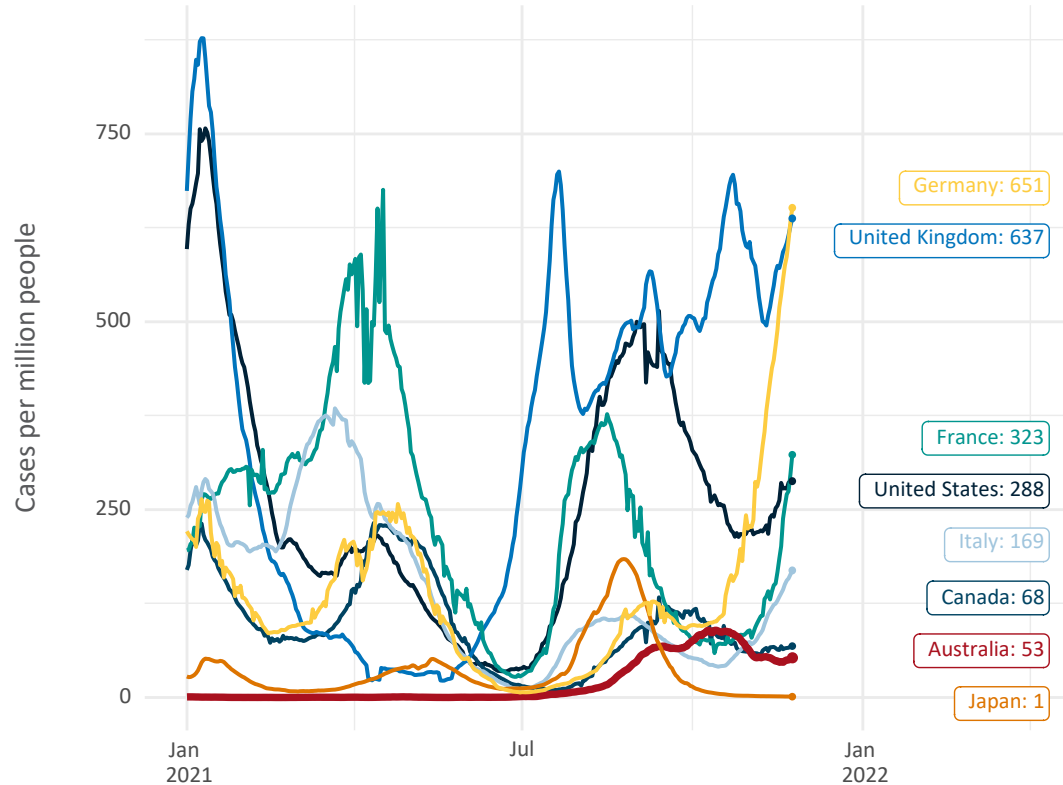


Note: From 15 September 2021, data for Australia includes all doses administered to people 12 and over. Prior to 15 September, data was for 16 and over
 Source: Department of Health (Australia), Our World in Data (international)
 Latest data: 25 November

Data as at:
25 Nov 2021

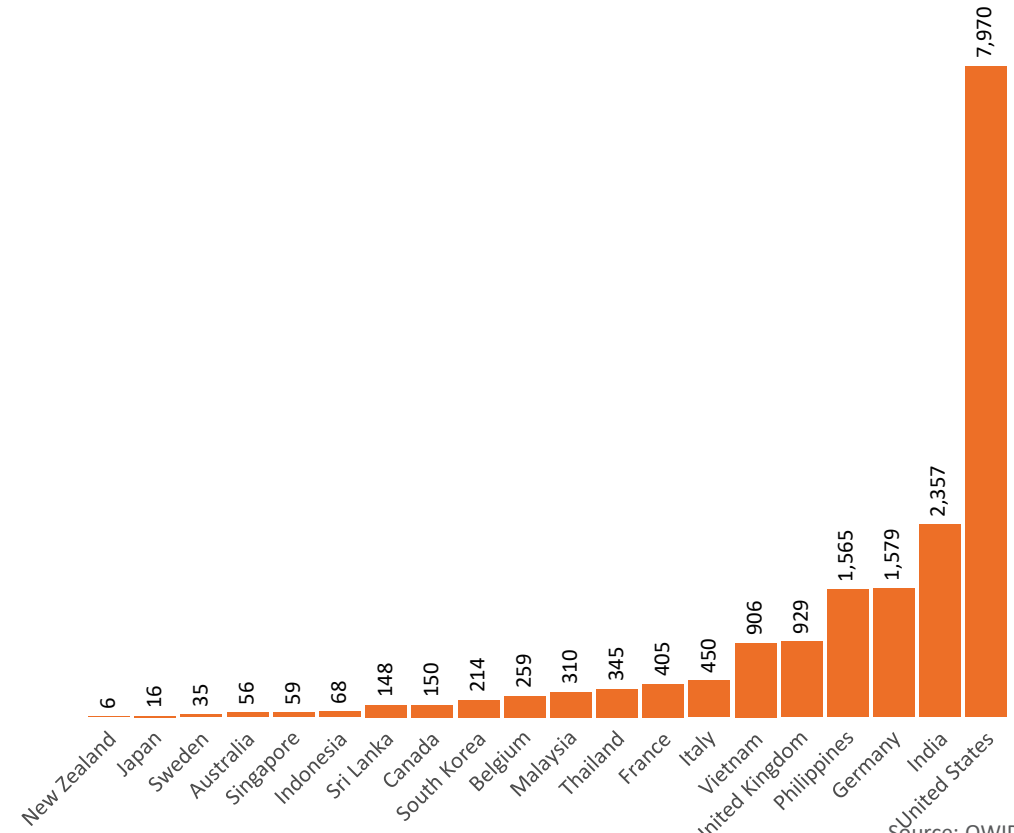
International data – COVID-19

New daily cases per million in 2021, Australia and G7 countries
Smoothed - 7 day average



Source: OWID
Data downloaded: 26 Nov 2021 08:00
Latest data: 24 Nov 2021


COVID-19 deaths in past 7 days - Australia and select countries



Source: OWID
Data downloaded: 26 Nov 2021 08:00
Latest data: 24 Nov 2021

Data as at midnight:
25 Nov 2021

Pandemic Response Payments (Current)



2.38 million
People have received at least one COVID Disaster Payment (including ISP200)

\$13.04 billion
Paid Out as at 25 Nov 2021

6.09 million
Claims granted across three different payments




94%
of Claims Received Digitally



COVID Disaster Payment:	5.87 million claims received - 2.19 million individuals paid a total of \$12.58 billion.
\$200 Income Support Payment:	351,000 claims received - 183,000 individuals paid a total of \$268.74 million.
Pandemic Leave Disaster Payment:	138,000 claims received - 118,000 individuals paid a total of \$194.44 million.

CURRENT COVID-19 DISASTER PAYMENTS



THREE PAYMENTS AVAILABLE

COVID Disaster Payment
assisting during a lockdown event in a Commonwealth hotspot.

Income Support Payment \$200
for income support recipients who lost at least 8 hours of work.

Pandemic Leave Disaster Payment
for those who have to self-isolate, quarantine or care.

For more information visit:
servicesaustralia.gov.au

New South Wales

Lockdown from 24 Jun to 10 Oct
Claiming period ends 27 Nov

1.08m people have received at least one COVID Disaster Payment.

\$7.48b paid out as at 25 Nov 2021.

\$2m paid in initial and reoccurring payments in the week ending 21 Nov 2021.

Cumulative payments made by State since activation on 1 Jul 2021.

Date	Cumulative Payments (\$b)
31 Oct	\$7.42b
7 Nov	\$7.47b
14 Nov	\$7.48b
21 Nov	\$7.48b
25 Nov	\$7.48b

Victoria

Lockdown (#6) since 6 Aug to 28 Oct
Claiming period ends 9 Dec

745,000 people have received at least one COVID Disaster Payment.

\$4.44b paid out as at 25 Nov 2021.

\$46m paid in initial and reoccurring payments in the week ending 21 Nov 2021.

Cumulative payments made by State since activation on 8 Jun 2021.

Date	Cumulative Payments (\$b)
31 Oct	\$4.19b
7 Nov	\$4.31b
14 Nov	\$4.39b
21 Nov	\$4.44b
25 Nov	\$4.44b

Northern Territory

Lockdown (#3) from 16 Nov to 22 Nov
Claiming period ends 13 Dec

6,500 people have received at least one COVID Disaster Payment.

\$4.6m paid out as at 25 Nov 2021.

\$257,000 paid in initial payments in the week ending 21 Nov 2021.

Cumulative payments made by State since activation on 25 Aug 2021.

Date	Cumulative Payments (\$m)
31 Oct	\$3.8m
7 Nov	\$3.8m
14 Nov	\$3.9m
21 Nov	\$4.1m
25 Nov	\$4.6m

Data as at midnight:
25 Nov 2021

Pandemic Response Payments (Closed Events)

CLOSED COVID-19 DISASTER PAYMENTS

