



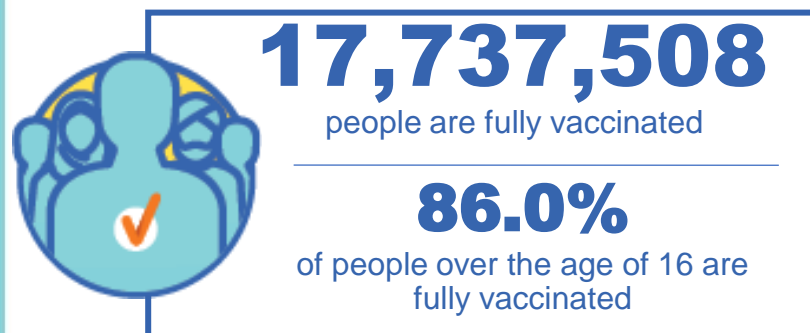
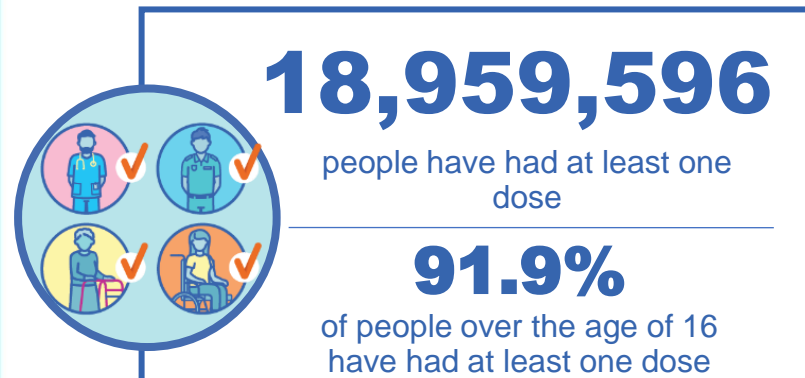
Australian Government
Operation COVID Shield

COVID-19 Vaccine Rollout

25 November 2021

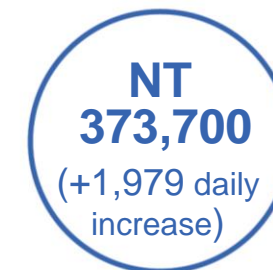
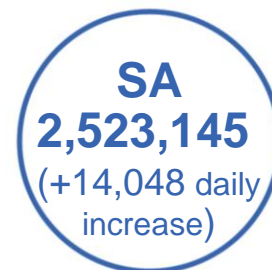
Data as at:
24 Nov 2021

Total vaccine doses



38,811,943 total vaccine doses administered nationally as at 24 November

+105,894 recorded in the last 24 hours



*Administration state breakdown indicates state in which a vaccine was administered

**Overall dose count includes instances of more than two doses per person in a small number of cases.

Source: Australian Immunisation Register

Data as at:
24 Nov 2021

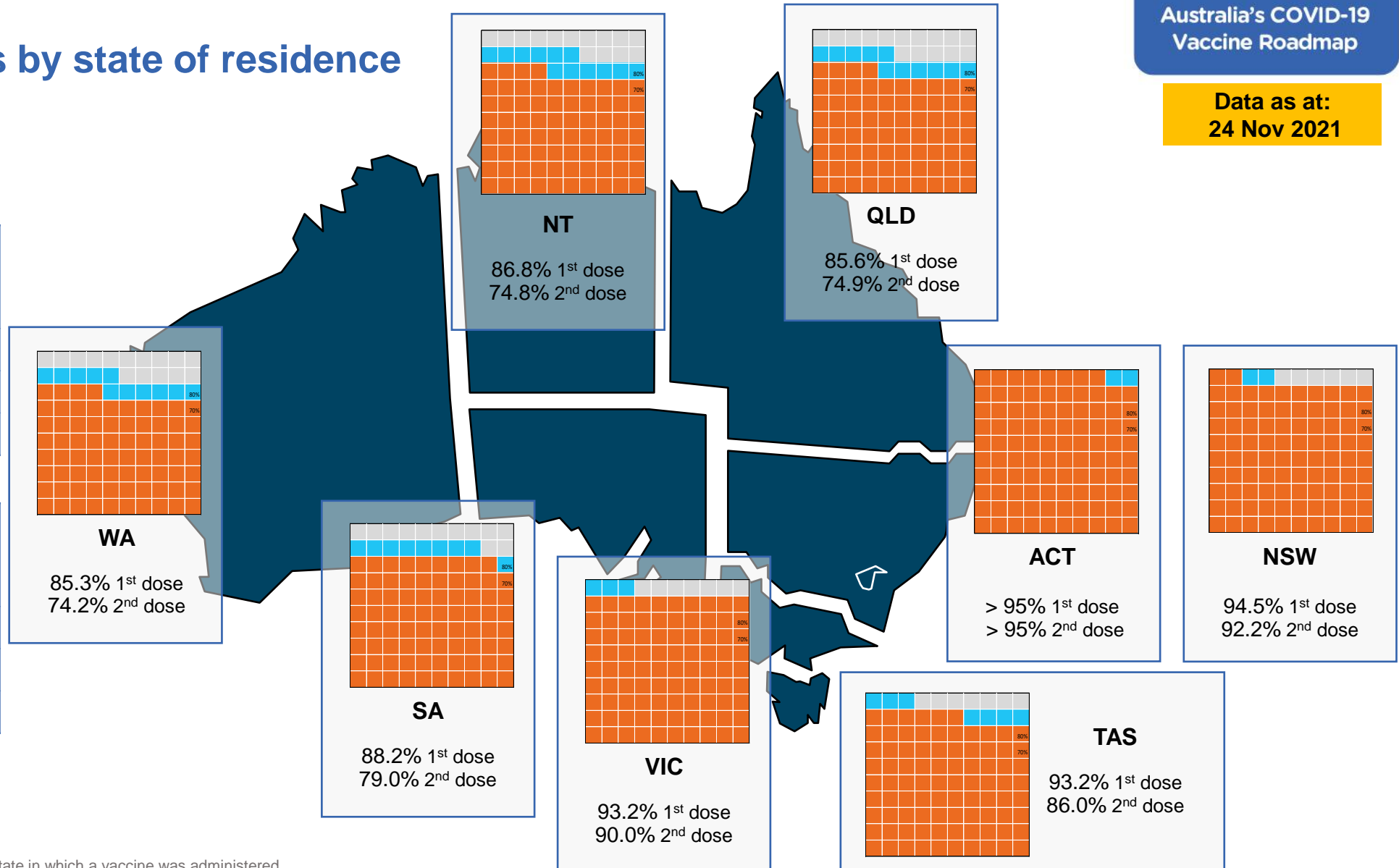
Vaccinations by state of residence

First doses

Age	Today	4 weeks ago	8 weeks ago
16+	91.9%	87.9%	78.7%
50+	>95%	>95%	90.1%
70+	>95%	>95%	>95%

Fully vaccinated

Age	Today	4 weeks ago	8 weeks ago
16+	86.0%	76.1%	55.2%
50+	92.9%	85.4%	72.6%
70+	>95%	90.2%	80.4%



*Residential state may differ from the state in which a vaccine was administered

Commonwealth and Jurisdiction vaccine doses administered

Data as at:
24 Nov 2021



38,811,943 total vaccine
doses administered nationally as at 24 November
+ 105,894 recorded in the last 24 hours



15,784,889
doses administered by state
and territory facilities
+ 30,369
recorded in the last 24 hours



23,027,054
doses administered by
commonwealth facilities
+ 75,525
recorded in the last 24 hours

21,921,611 total vaccine doses
administered in primary care settings
1,105,443 total vaccine doses
administered in aged care and disability
settings

NSW	Jurisdictions	Commonwealth
Cumulative	4,203,127	8,683,411
Daily increase	2,102	10,933

VIC	Jurisdictions	Commonwealth
Cumulative	4,740,311	5,871,854
Daily increase	4,442	15,073

QLD	Jurisdictions	Commonwealth
Cumulative	2,861,029	4,212,965
Daily increase	9,898	24,912

WA	Jurisdictions	Commonwealth
Cumulative	1,637,720	1,922,609
Daily increase	4,767	12,183

TAS	Jurisdictions	Commonwealth
Cumulative	453,350	378,156
Daily increase	1,347	2,179

SA	Jurisdictions	Commonwealth
Cumulative	1,189,998	1,333,147
Daily increase	5,500	8,548

ACT	Jurisdictions	Commonwealth
Cumulative	478,040	472,526
Daily increase	1,454	577

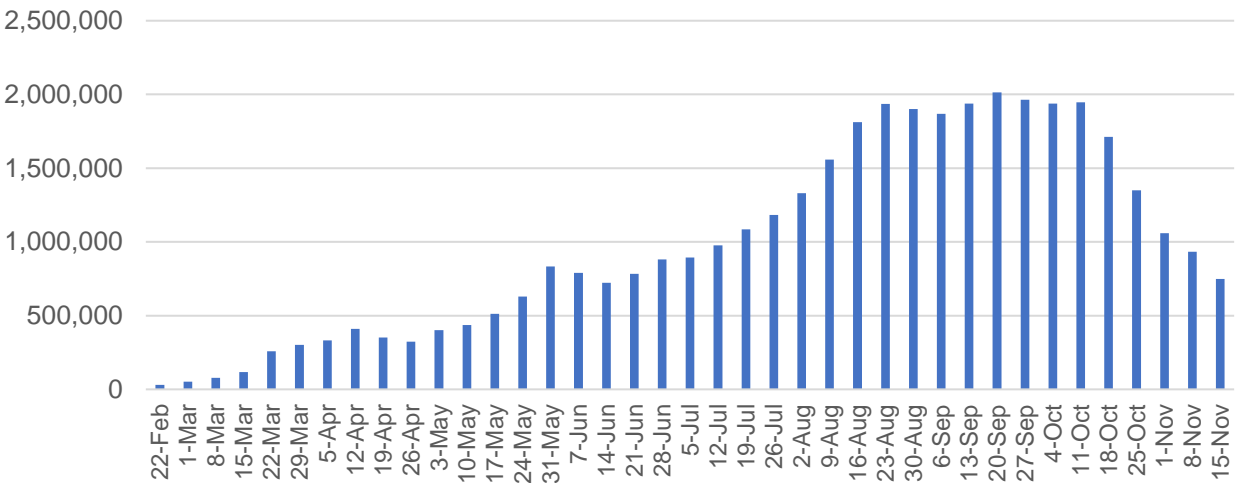
NT	Jurisdictions	Commonwealth
Cumulative	221,314	152,386
Daily increase	859	1,120

Vaccine milestone charts

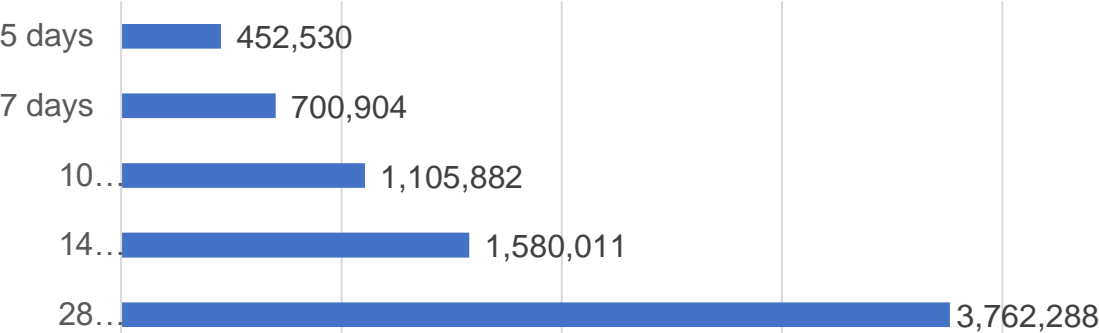
Data as at:
24 Nov 2021

Australia's COVID-19
Vaccine Roadmap

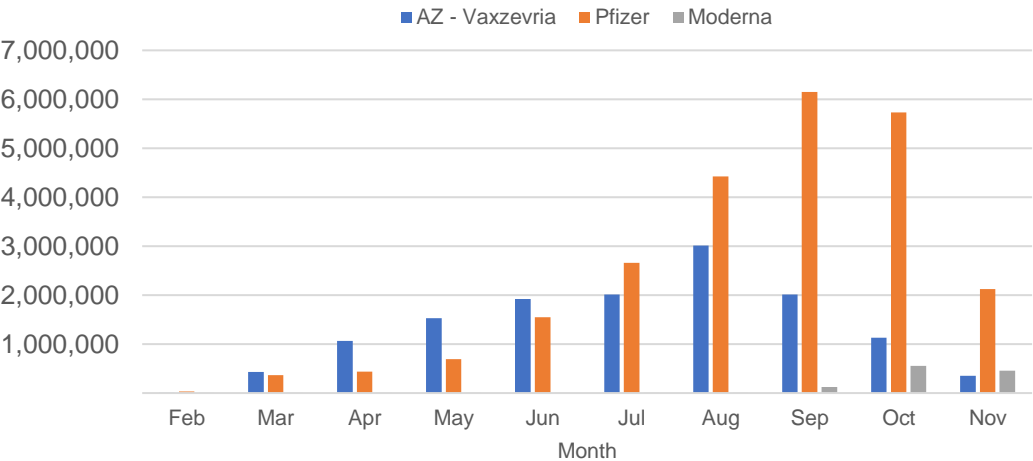
Doses Administered by Week



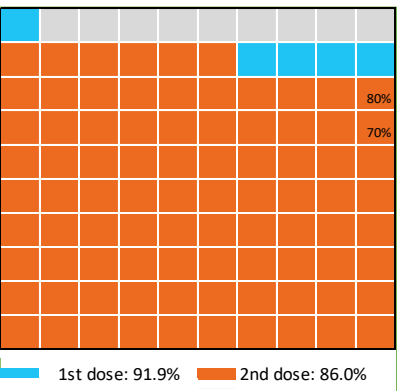
Doses Reported



Doses by administration month and vaccine type



Eligible population percentage coverage



*Sourced from the Australian Immunisation Register.

*Each square represents 1% of the national population.
Squares are filled as milestones are achieved.

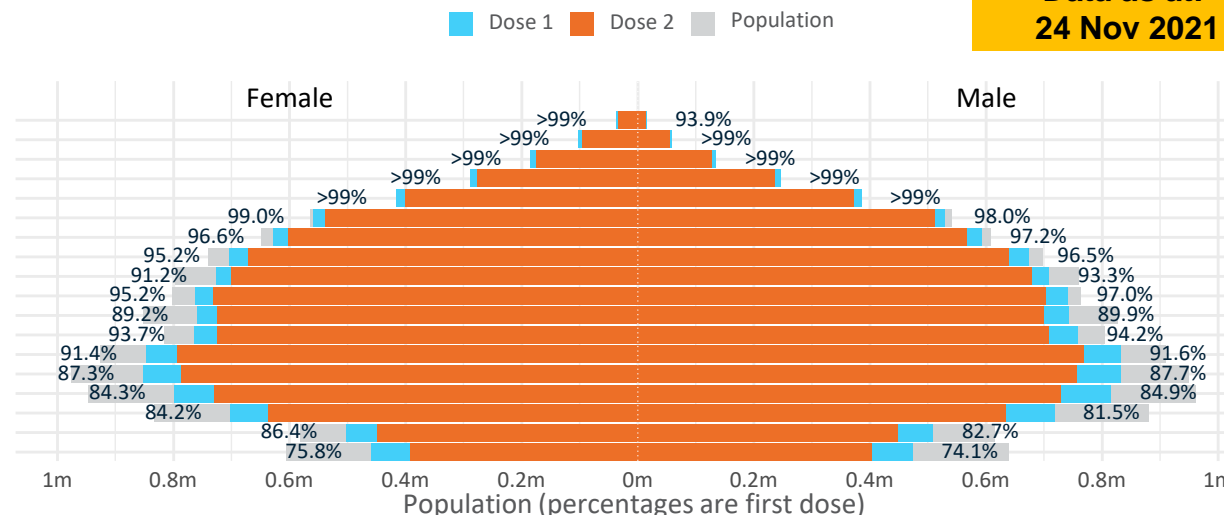
Data as at:
24 Nov 2021

Doses by age and sex

First and second doses by age and sex

	16+	50+	70+	12-15
Dose 1	91.95% (18,959,596 doses / 20,619,959 people)	97.12% (8,497,618 doses / 8,749,703 people)	>99% (2,957,842 doses / 2,934,706 people)	74.98% (932,740 doses / 1,243,990 people)
Dose 2	86.02% (17,737,508 doses / 20,619,959 people)	92.92% (8,130,496 doses / 8,749,703 people)	96.59% (2,834,701 doses / 2,934,706 people)	63.95% (795,589 doses / 1,243,990 people)

Age	Dose 1	Dose 2
95+	52,181 (98.6%)	47,440 (89.7%)
90-94	160,845 (>99%)	150,016 (94.7%)
85-89	319,828 (>99%)	302,619 (95.7%)
80-84	534,537 (>99%)	512,010 (96.9%)
75-79	801,152 (>99%)	772,810 (>99%)
70-74	1,089,299 (98.6%)	1,049,806 (95.0%)
65-69	1,220,817 (97.0%)	1,168,766 (92.9%)
60-64	1,378,400 (95.9%)	1,311,507 (91.3%)
55-59	1,435,910 (92.3%)	1,379,444 (88.7%)
50-54	1,504,649 (96.2%)	1,436,078 (91.8%)
45-49	1,502,878 (89.6%)	1,424,936 (85.0%)
40-44	1,524,558 (94.1%)	1,434,290 (88.5%)
35-39	1,683,703 (91.8%)	1,563,841 (85.2%)
30-34	1,691,333 (87.9%)	1,548,073 (80.5%)
25-29	1,623,201 (85.1%)	1,464,728 (76.8%)
20-24	1,424,978 (83.2%)	1,274,749 (74.4%)
16-19	1,011,327 (84.6%)	896,395 (75.0%)
12-15	932,740 (75.0%)	795,589 (64.0%)



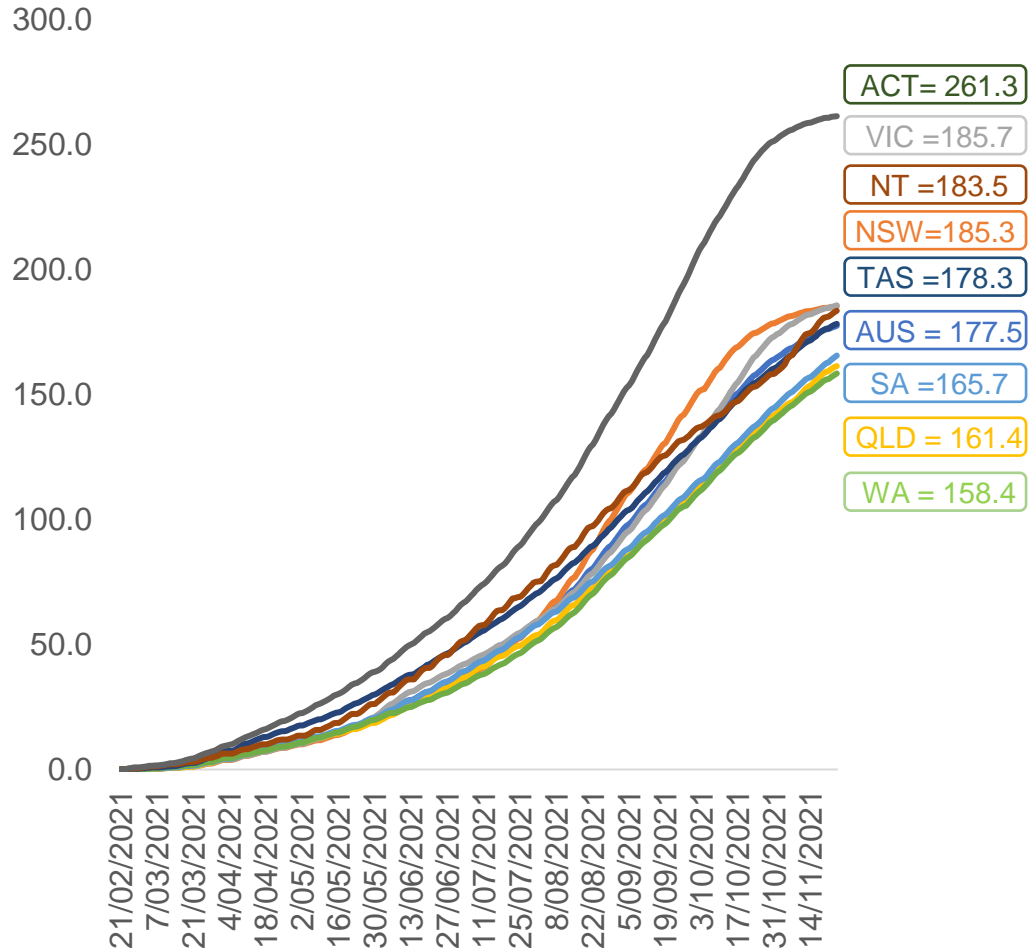
	AUS	ACT	NSW	NT	QLD	SA	TAS	VIC	WA
16 and over - dose 1	18,959,596	345,305	6,203,277	165,448	3,519,215	1,271,122	410,297	5,037,851	1,803,611
16 and over - dose 2	17,737,508	337,106	6,052,139	142,524	3,081,724	1,138,201	378,459	4,867,421	1,569,645
16 and over - population	20,619,959*	344,037	6,565,651	190,571	4,112,707	1,440,400	440,172	5,407,574	2,114,978
16 and over % with dose 1	91.95%	>99%	94.48%	86.82%	85.57%	88.25%	93.21%	93.16%	85.28%
16 and over % with dose 2	86.02%	97.99%	92.18%	74.79%	74.93%	79.02%	85.98%	90.01%	74.22%
50 and over - dose 1	8,497,618	133,597	2,765,105	55,696	1,644,757	637,929	211,151	2,165,699	827,530
50 and over - dose 2	8,130,496	131,019	2,712,195	51,152	1,531,700	592,479	198,723	2,104,383	760,238
50 and over - population	8,749,703	127,802	2,807,793	62,280	1,758,855	674,384	220,036	2,211,211	885,370
50 and over % with dose 1	97.12%	>99%	98.48%	89.43%	93.51%	94.59%	95.96%	97.94%	93.47%
50 and over % with dose 2	92.92%	>99%	96.60%	82.13%	87.09%	87.85%	90.31%	95.17%	85.87%
70 and over - dose 1	2,957,842	43,525	976,317	11,398	567,635	238,910	77,588	746,142	274,795
70 and over - dose 2	2,834,701	42,509	954,135	10,598	535,837	222,966	72,851	721,881	255,137
70 and over - population	2,934,706	39,946	962,606	12,343	577,767	240,514	77,155	743,519	280,281
70 and over % with dose 1	>99%	>99%	>99%	92.34%	98.25%	>99%	>99%	>99%	98.04%
70 and over % with dose 2	96.59%	>99%	>99%	85.86%	92.74%	92.70%	94.42%	97.09%	91.03%
12 to 15 - dose 1	932,740	19,647	316,655	9,174	169,448	54,325	18,721	264,456	73,279
12 to 15 - dose 2	795,589	18,769	296,841	6,661	126,677	38,482	14,645	238,090	50,339
12 to 15 - population	1,243,990	19,693	390,330	13,060	270,146	82,747	26,308	308,611	132,869
12 to 15 % with dose 1	74.98%	>99%	81.12%	70.25%	62.72%	65.65%	71.16%	85.69%	55.15%
12 to 15 % with dose 2	63.95%	95.31%	76.05%	51.00%	46.89%	46.51%	55.67%	77.15%	37.89%

*National population will not equal sum of listed jurisdictions due to a small number of people counted in national population residing in some 'other' territories. Sum of state doses will not add to national total as some records are unable to be geocoded to a State or Territory.

Doses sourced from Australian Immunisation Register, population from ABS ERP June 2020

Vaccinations by location

Cumulative total doses administered vs eligible state populations*

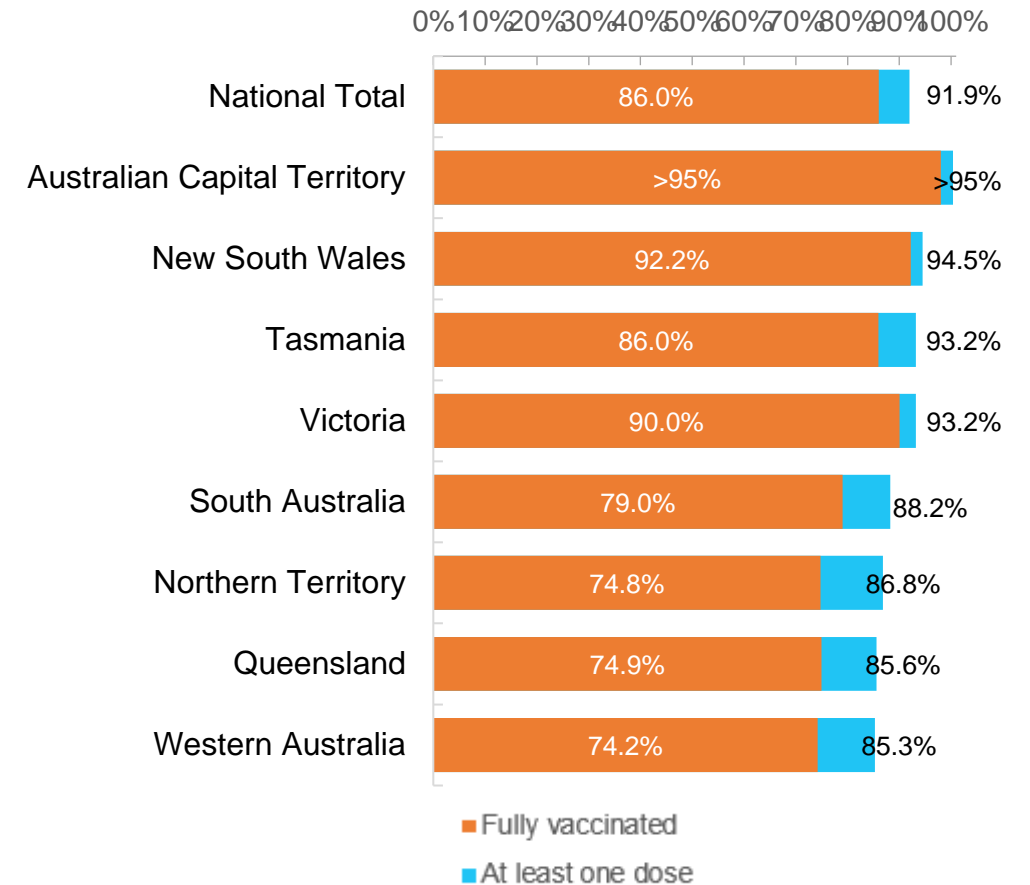


*Not an indication of percentage vaccinated, numbers will exceed 100 due to multiple doses required per person of the population. All doses are included, including those for the 12-15 cohort, and are based on vaccination provider location.

Data as at:
24 Nov 2021

Australia's COVID-19
Vaccine Roadmap

First and Second Doses by state of residence



Aboriginal and Torres Strait Islander peoples

Number of people vaccinated

Data as at:
23 Nov 2021
Updated weekly

Australia's COVID-19
Vaccine Roadmap



381,625

people over the age of 16
have had at least one dose

71.9%

of people over the age of 16
have had at least one dose



320,060

people over the age of 16
are fully vaccinated

60.2%

of people over the age of 16 are
fully vaccinated



**37,605
(52.4%)**

people aged 12-15 years
have had at least one dose

173 Aboriginal community controlled health services (ACCHS)

0#	50	27	41	12	3	21	19
ACT	NSW	NT	QLD	SA	TAS	VIC	WA

Medicare Address State ^{##}	Individuals Dose 1	Individuals Dose 1 %	Individuals Dose 2	Individuals Dose 2 %
Australian Capital Territory	4,887	89.6%	4,643	85.0%
New South Wales	136,135	84.9%	128,941	80.3%
Northern Territory	35,557	77.3%	26,333	56.9%
Queensland	92,212	64.0%	69,983	48.4%
South Australia	16,558	64.5%	12,945	50.2%
Tasmania	13,434	77.9%	12,005	69.3%
Victoria	35,134	86.8%	32,570	80.3%
Western Australia	34,563	53.8%	23,620	36.6%
Unknown/Other Territories	13,145	48.7%	9,020	33.3%
Totals	381,625	71.9%	320,060	60.2%

Source: Australian Immunisation Register

*Identifying as Aboriginal and Torres Strait Islander is optional and the estimated population may be under reported.

**Includes all Aboriginal and Torres Strait Islander peoples who have received a vaccination, not limited to those administered in an ACCHS setting

#ACCHS in the ACT are currently operating as a Commonwealth Vaccine Clinics so not included to avoid double counting

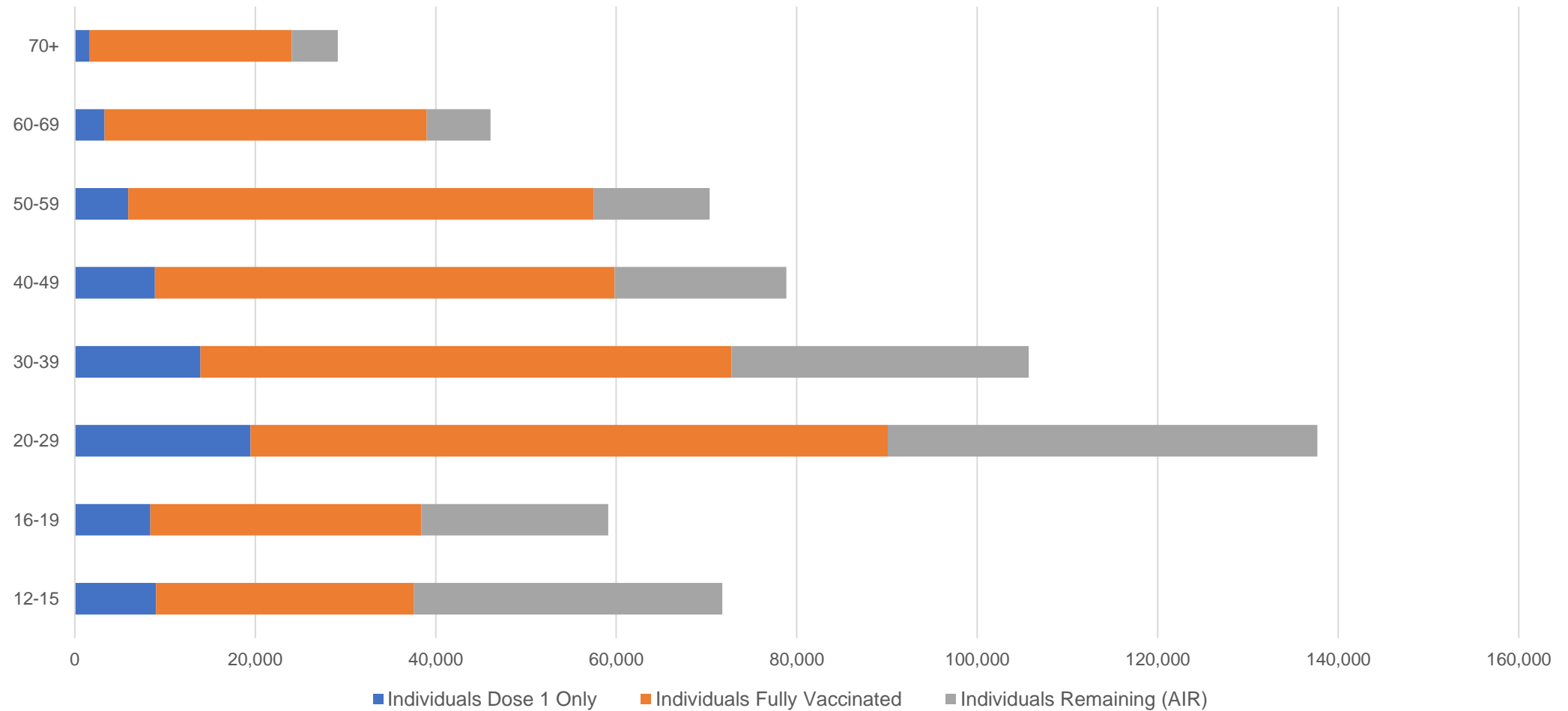
##The above table includes all identified Aboriginal and Torres Strait Islander people who are aged 16 and above by their state of residence.

Aboriginal and Torres Strait Islander peoples

Number of people vaccinated by age

Data as at:
23 Nov 2021
Updated weekly

Australia's COVID-19
Vaccine Roadmap



Source: Australian Immunisation Register

Data as at:
24 Nov 2021

Commonwealth primary care



Primary care vaccine administration sites

5,638	137	173	3,447
GPs	CVCs	ACCHS	Pharmacies



21,921,611 total vaccine doses administered
primary care settings as at 24 November
+ 72,297 recorded in the last 24 hours

Primary care vaccinations by provider type

	Doses administered	Daily increase	7 day increase
General Practice* includes other Commonwealth	19,664,921	49,445	305,825
Pharmacy	2,256,690	22,852	140,803



152,165 doses administered to persons
residing in other territories or with
missing residential information

*General practice includes Commonwealth Vaccination Clinics, Aboriginal Community Health Centres, Royal Flying Doctor Service and other Commonwealth vaccination facilities

Source: Australian Immunisation Register

Data as at:
24 Nov 2021

Commonwealth aged care and disability doses administered



1,105,443 (+ 3,228 last 24 hours)

Total vaccine doses administered in aged care and disability facilities as at 24 November

Number of doses administered as part of the Commonwealth aged and disability care rollout

NSW
520,086
(+552 daily increase)

VIC
205,005
(+928 daily increase)

QLD
168,199
(+760 daily increase)

WA
78,080
(+276 daily increase)

TAS
18,669
(+138 daily increase)

SA
68,675
(+423 daily increase)

ACT
14,053
(+41 daily increase)

NT
6,217
(+9 daily increase)

26,459

doses administered to persons
residing in other territories or with
missing residential information

*Sourced from the Australian Immunisation Register. Includes all persons vaccinated at participating residential aged care, disability and related industry settings.

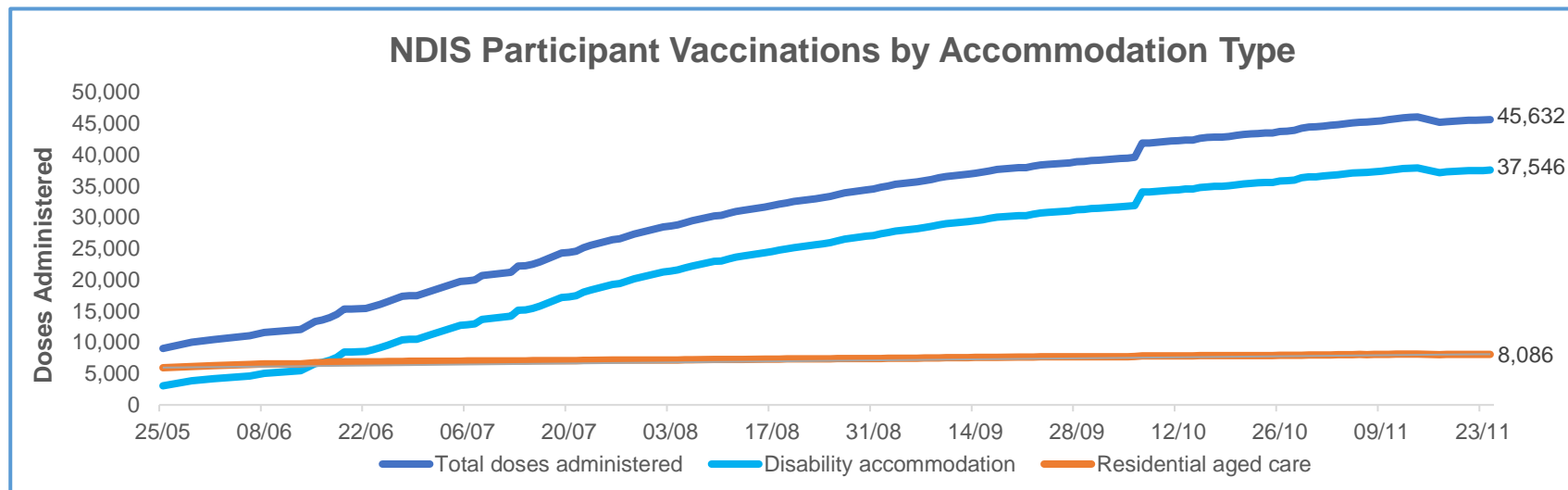
**State level breakdown indicates the residential location and may not align to the state in which the vaccination occurred.

Source: Australian Immunisation Register

Data as at:
24 Nov 2021*

Vaccination rate of people with disability and the disability workforce

Phase 1a – People with disability living in shared accommodation



	Total people with at least one dose	People fully vaccinated	Total number of individuals in cohort	Total doses administered	% People with at least one dose	% People fully vaccinated
NDIS participants living in shared accommodation **	23,369	22,263	27,603	45,632	84.7%	80.7%
NDIS screened workers ***	212,993	200,640	246,073	413,633	86.6%	81.5%



* Updates are available Monday to Friday on participants, and bi-weekly for workers, numbers may be up to four days old.

** Shared accommodation means two or more people with disability living in shared residential accommodation and NDIS participants living in Residential Aged Care accommodation as per the eligibility criteria of Phase 1a.

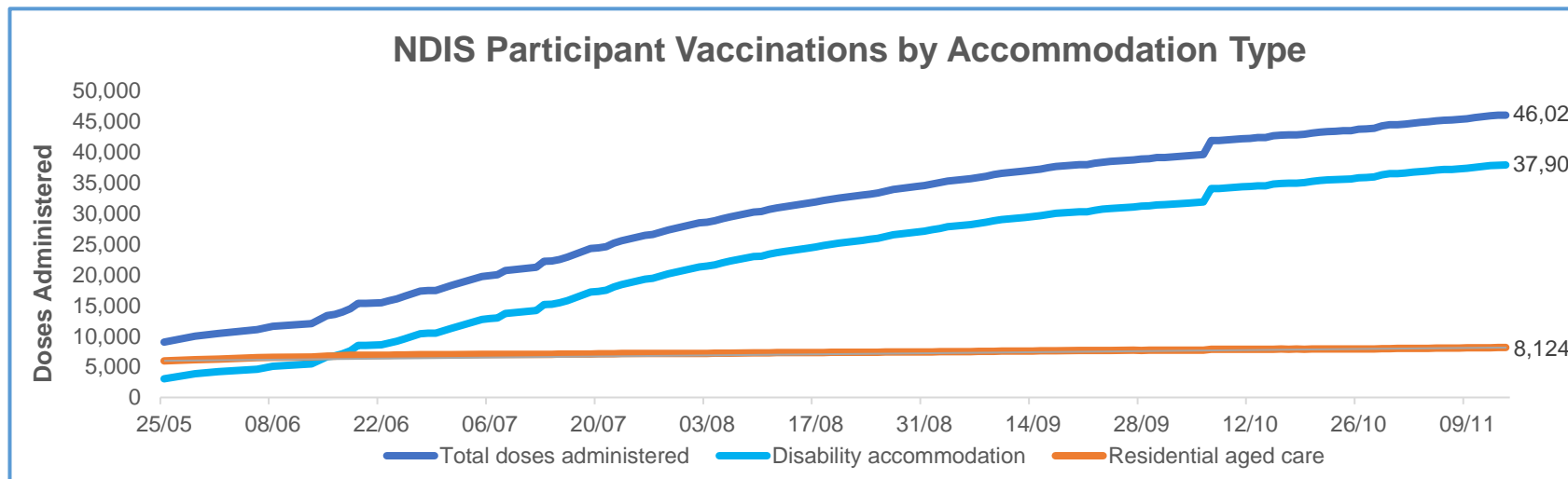
*** Total number of workers within the NDIS Commission Worker Screening database who have ever been successfully screened and linked to an NDIS registered provider or participant.

Source: Linkage between National Disability Insurance Agency data, NDIS Quality and Safeguards Commission data and the Australian Immunisation Register.

Data as at:
15 Nov 2021*

Vaccination rate of people with disability and the disability workforce

Phase 1a – People with disability living in shared accommodation



	Total people with at least one dose	People fully vaccinated	Total number of individuals in cohort	Total doses administered	% People with at least one dose	% People fully vaccinated
NDIS participants living in shared accommodation **	23,650	22,378	27,603	46,028	85.7%	81.1%
NDIS screened workers ***	207,058	194,060	242,348	401,118	85.4%	80.1%



* Updates are available Monday to Friday on participants, and bi-weekly for workers, numbers may be up to four days old.

** Shared accommodation means two or more people with disability living in shared residential accommodation and NDIS participants living in Residential Aged Care accommodation as per the eligibility criteria of Phase 1a.

*** Total number of workers within the NDIS Commission Worker Screening database who have ever been successfully screened and linked to an NDIS registered provider or participant.

Source: Linkage between National Disability Insurance Agency data, NDIS Quality and Safeguards Commission data and the Australian Immunisation Register.

Residential aged care vaccination rollout

Residential aged care facilities status

100% Commonwealth facilities visited (2,556 planned sites)

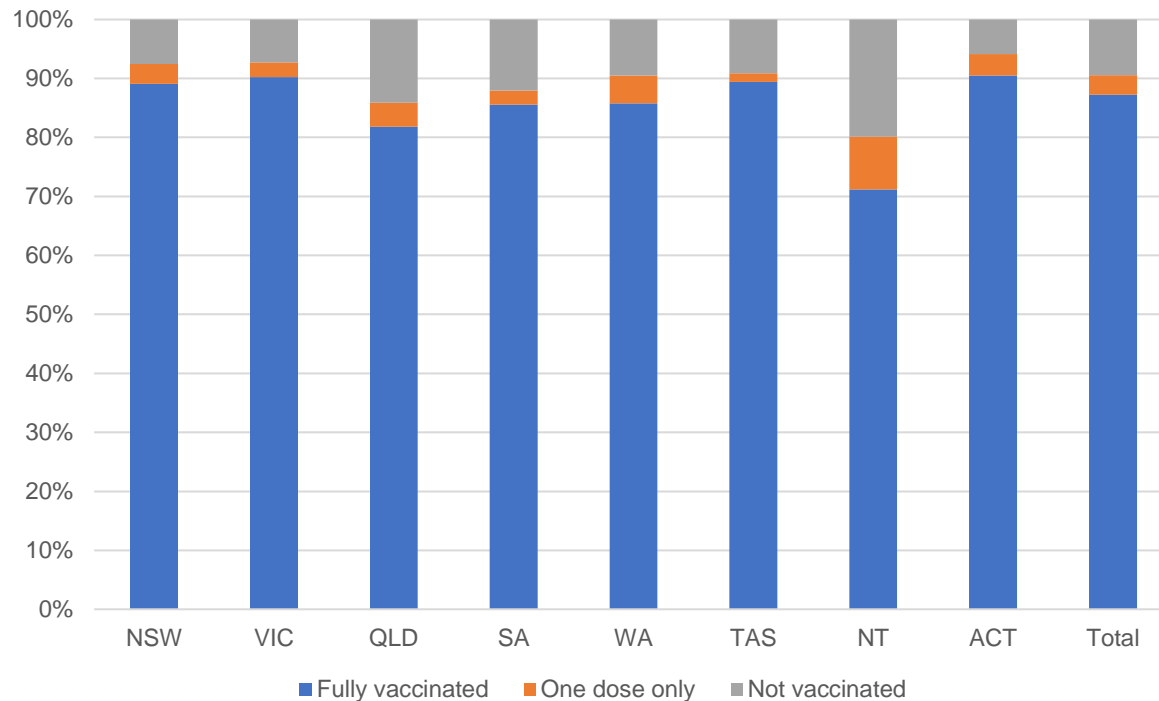
161,427 People fully vaccinated

167,582 People with at least one dose

Australia's COVID-19 Vaccine Roadmap

Data as at:
24 Nov 2021

Aged care resident vaccinations



Aged care worker vaccinations

Jurisdictions	Total workers with at least one dose	Workers fully vaccinated	% Workers with at least one dose	% Workers fully vaccinated
NSW	78,152	78,025	99.6%	99.4%
VIC	71,054	70,649	99.9%	99.3%
QLD	49,028	48,672	99.9%	99.1%
SA	27,589	26,995	100.0%	97.8%
WA	23,705	23,485	100.0%	99.1%
TAS	7,657	7,458	99.8%	97.2%
NT	847	842	100.0%	99.4%
ACT	2,994	2,976	100.0%	99.4%
Total	261,026	259,102	99.8%	99.1%

Source: My Aged Care Portal staff vaccination progress

**Resident vaccination information is reported manually by service providers

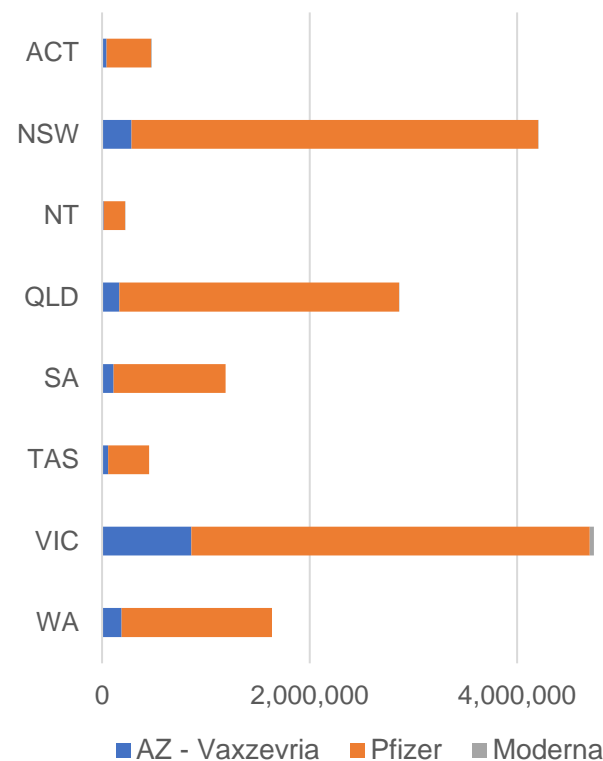
*Status updates are provided by facilities at least once per week. Reporting is updated Monday to Friday to encompass different facility updates being made on different days.

Data is sourced directly from Aged Care Service Providers and is not drawn or closely aligned with data from AIR due to inconsistencies and potential lags in uploading of records.

Data as at:
24 Nov 2021

Jurisdiction administered

Total vaccine doses administered in State and Territory clinics as at 24 November



15,784,889 total vaccine doses administered
in State and Territory clinics as at 24 November
+ **30,369** recorded in the last 24 hours
+ **235,406** recorded in the last 7 days

NSW
4,203,127
(+2,102 daily
increase)

VIC
4,740,311
(+4,442 daily
increase)

QLD
2,861,029
(+9,898 daily
increase)

WA
1,637,720
(+4,767 daily
increase)

TAS
453,350
(+1,347 daily
increase)

SA
1,189,998
(+5,500 daily
increase)

ACT
478,040
(+1,454 daily
increase)

NT
221,314
(+859 daily
increase)

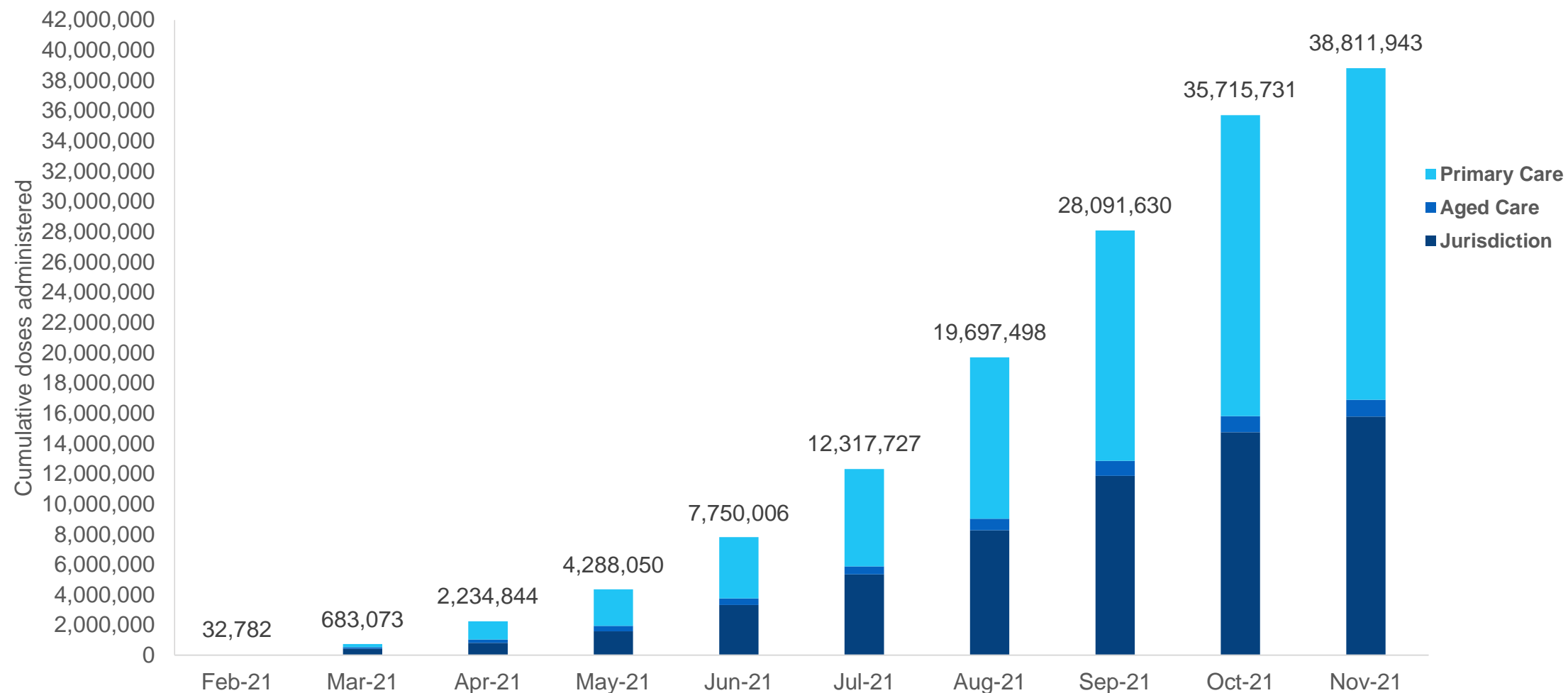
*Sourced from the Australian Immunisation Register and self-reported data. Numbers are calculated as difference in daily cumulative reported numbers to allow for historical corrections in all self-reported data sources.

Source: Australian Immunisation Register

Cumulative doses administered by channel

Data as at:
24 Nov 2021

Australia's COVID-19
Vaccine Roadmap



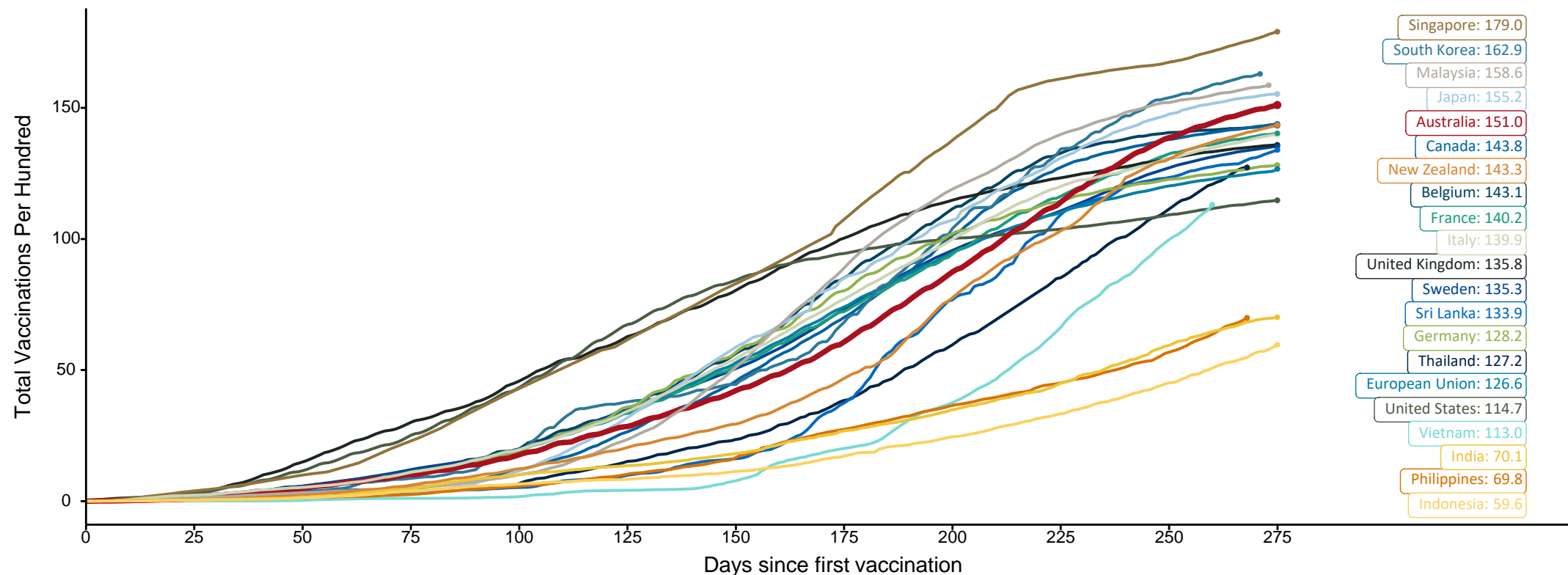
Source: Australian Immunisation Register

Doses at equivalent stages of rollout (Day 275)

Data as at:
24 Nov 2021

The x-axis is truncated at the length of Australia's vaccination program. Countries with intermittent reporting have had their doses per 100 imputed to Australia's current stage of rollout. Israel excluded as it is beyond scale of the graph

Cumulative doses administered (24 Nov): **38,811,943**

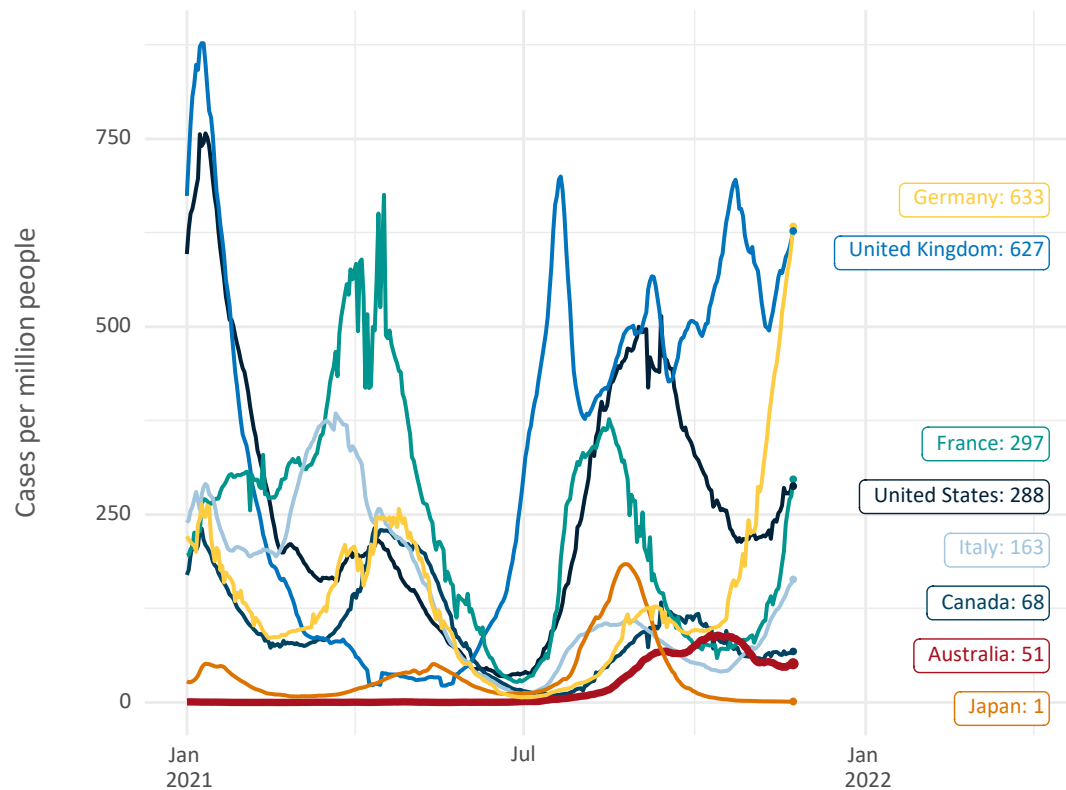


Note: From 15 September 2021, data for Australia includes all doses administered to people 12 and over. Prior to 15 September, data was for 16 and over
Source: Department of Health (Australia), Our World in Data (international)
Latest data: 24 November

International data – COVID-19

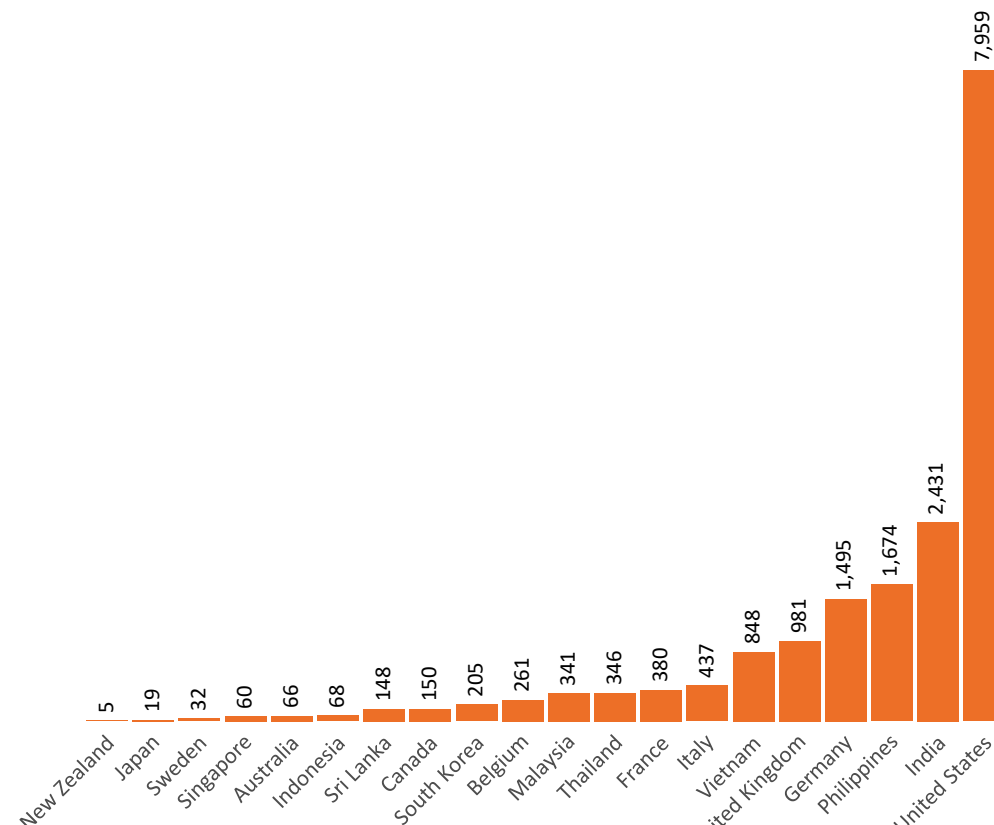
Data as at:
24 Nov 2021

New daily cases per million in 2021, Australia and G7 countries
Smoothed - 7 day average



Source: OWID
Data downloaded: 25 Nov 2021 07:57
Latest data: 23 Nov 2021

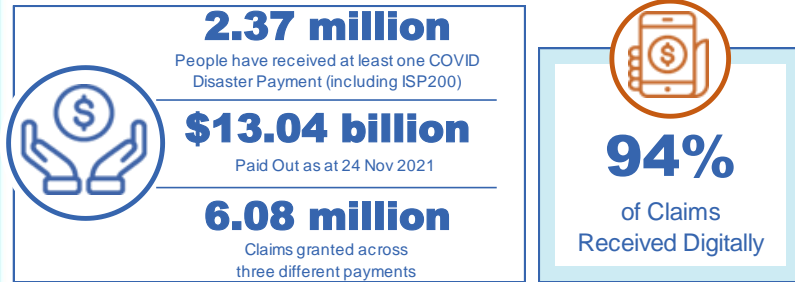
COVID-19 deaths in past 7 days - Australia and select countries



Source: OWID
Data downloaded: 25 Nov 2021 07:57
Latest data: 23 Nov 2021

Data as at midnight:
24 Nov 2021

Pandemic Response Payments (Current)



COVID Disaster Payment:	5.87 million claims received - 2.19 million individuals paid a total of \$12.58 billion.
\$200 Income Support Payment:	351,000 claims received - 183,000 individuals paid a total of \$268.71 million.
Pandemic Leave Disaster Payment:	138,000 claims received - 118,000 individuals paid a total of \$193.29 million.



COVID Disaster Payment

assisting during a lockdown event in a Commonwealth hotspot.

Income Support Payment \$200

for income support recipients who lost at least 8 hours of work.

Pandemic Leave Disaster Payment

for those who have to self-isolate, quarantine or care.

For more information visit:
servicesaustralia.gov.au

CURRENT COVID-19 DISASTER PAYMENTS

New South Wales

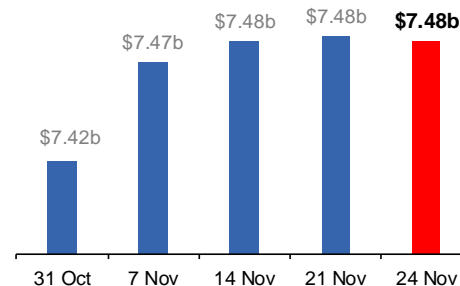
Lockdown from 24 Jun to 10 Oct
Claiming period ends 27 Nov

1.08m people have received at least one COVID Disaster Payment.

\$7.48b paid out as at 24 Nov 2021.

\$2m paid in initial and reoccurring payments in the week ending 21 Nov 2021.

Cumulative payments made by State since activation on 1 Jul 2021.



Victoria

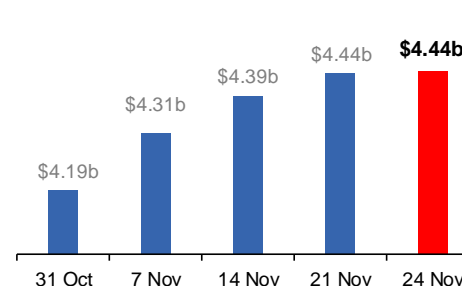
Lockdown (#6) since 6 Aug to 28 Oct
Claiming period ends 9 Dec

745,000 people have received at least one COVID Disaster Payment.

\$4.44b paid out as at 24 Nov 2021.

\$46m paid in initial and reoccurring payments in the week ending 21 Nov 2021.

Cumulative payments made by State since activation on 8 Jun 2021.



Australian Capital Territory

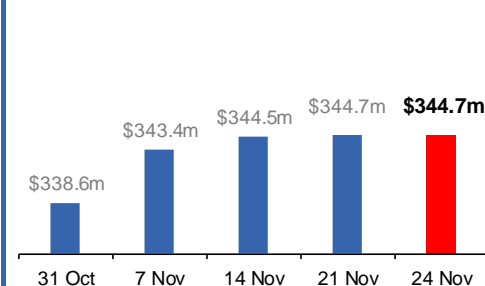
Lockdown since 12 Aug to 14 Oct
Claiming period ends 25 Nov

65,000 people have received at least one COVID Disaster Payment.

\$344.7m paid out as at 24 Nov 2021.

\$162,000 paid in initial and reoccurring payments in the week ending 21 Nov 2021.

Cumulative payments made by State since activation on 20 Aug 2021.



Northern Territory

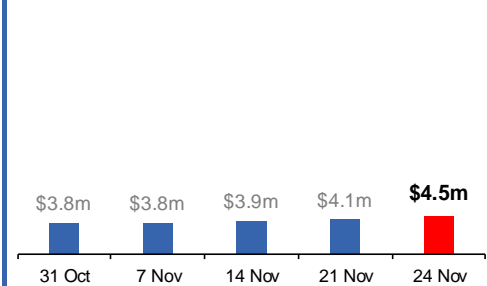
Lockdown (#3) from 16 Nov to 22 Nov
Claiming period ends 13 Dec

6,400 people have received at least one COVID Disaster Payment.

\$4.5m paid out as at 24 Nov 2021.

\$257,000 paid in initial payments in the week ending 21 Nov 2021.

Cumulative payments made by State since activation on 25 Aug 2021.



Pandemic Response Payments (Closed Events)

Data as at midnight:
24 Nov 2021

CLOSED COVID-19 DISASTER PAYMENTS

Tasmania

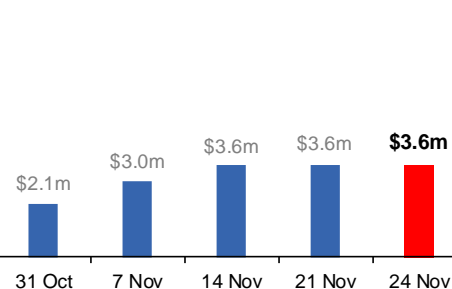
Lockdown from 15 Oct to 18 Oct
Claiming period ended 12 Nov

6,900 people have received at least one COVID Disaster Payment.

\$3.6m paid out as at 24 Nov 2021.

\$27,000 paid in initial payments in the week ending 21 Nov 2021.

 Cumulative payments made by State since activation on 22 Oct 2021.




Queensland

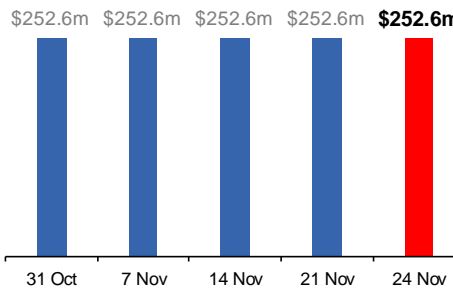
Lockdown from 31 Jul to 11 Aug
Claiming period ended 28 Aug

196,000 people have received at least one COVID Disaster Payment.

\$252.6m paid out as at 24 Nov 2021.

\$9,000 paid in initial and reoccurring payments in the week ending 21 Nov 2021.

 Cumulative payments made by State since activation on 7 Aug 2021.




South Australia

Lockdown from 21 to 27 Jul
Claiming period ended 17 Aug

86,000 people have received at least one COVID Disaster Payment.

\$48.2m paid out as at 24 Nov 2021.

Nil payments made in the week ending 21 Nov 2021.

 Cumulative payments made by State since activation on 28 Jul 2021.

