



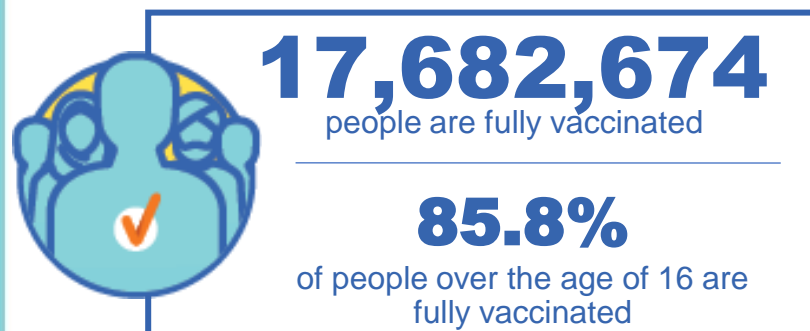
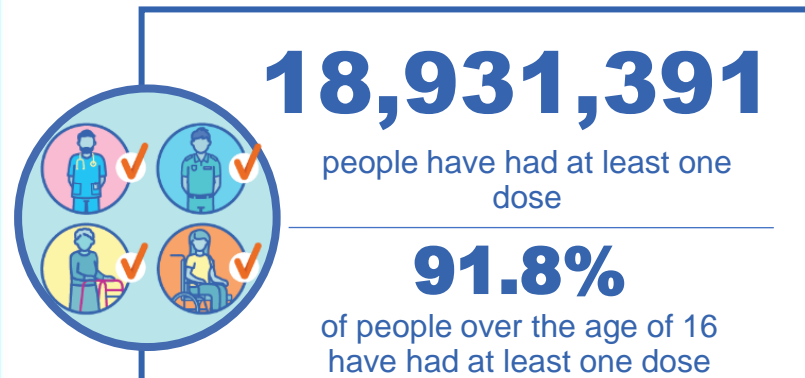
Australian Government
Operation COVID Shield

COVID-19 Vaccine Rollout

24 November 2021

Data as at:
23 Nov 2021

Total vaccine doses



38,706,049 total vaccine doses administered nationally as at 23 November

+108,660 recorded in the last 24 hours

NSW
12,873,503
(+15,146 daily increase)

VIC
10,592,650
(+17,690 daily increase)

QLD
7,039,184
(+34,520 daily increase)

WA
3,543,379
(+18,004 daily increase)

TAS
827,980
(+3,744 daily increase)

SA
2,509,097
(+15,197 daily increase)

ACT
948,535
(+2,394 daily increase)

NT
371,721
(+1,965 daily increase)

*Administration state breakdown indicates state in which a vaccine was administered

**Overall dose count includes instances of more than two doses per person in a small number of cases.

Source: Australian Immunisation Register

Data as at:
23 Nov 2021

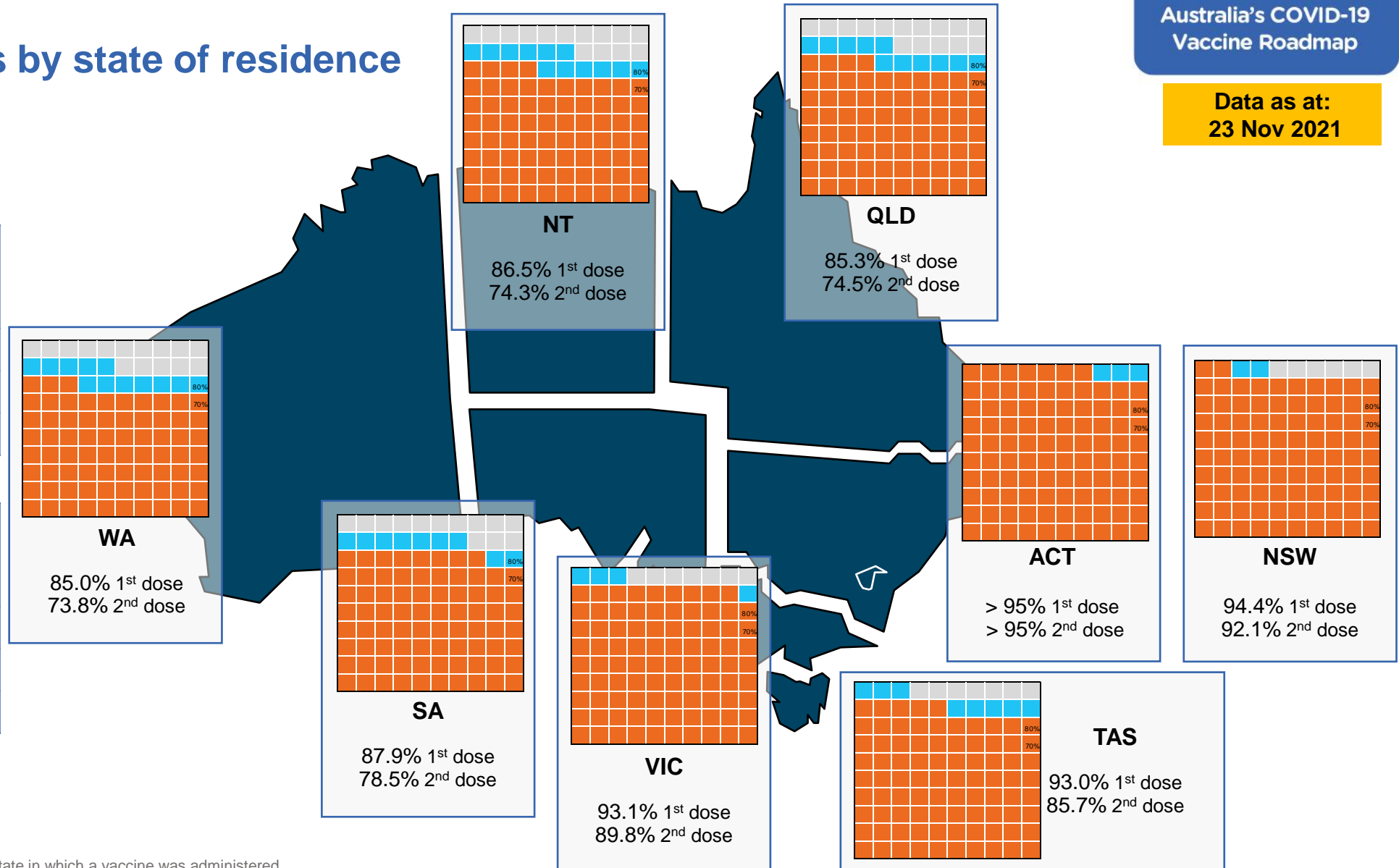
Vaccinations by state of residence

First doses

Age	Today	4 weeks ago	8 weeks ago
16+	91.8%	87.7%	78.2%
50+	>95%	95.0%	89.7%
70+	>95%	>95%	>95%

Fully vaccinated

Age	Today	4 weeks ago	8 weeks ago
16+	85.8%	75.4%	54.4%
50+	92.7%	84.9%	71.9%
70+	>95%	89.8%	79.8%



*Residential state may differ from the state in which a vaccine was administered

Commonwealth and Jurisdiction vaccine doses administered

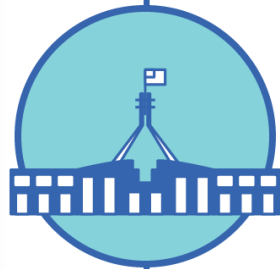
Data as at:
23 Nov 2021



38,706,049 total vaccine
doses administered nationally as at 23 November
+ 108,660 recorded in the last 24 hours



15,754,520
doses administered by state
and territory facilities
+ 31,146
recorded in the last 24 hours



22,951,529
doses administered by
commonwealth facilities
+ 77,514
recorded in the last 24 hours
21,849,314 total vaccine doses
administered in primary care settings
1,102,215 total vaccine doses
administered in aged care and disability
settings

NSW	Jurisdictions	Commonwealth
Cumulative	4,201,025	8,672,478
Daily increase	2,349	12,797

VIC	Jurisdictions	Commonwealth
Cumulative	4,735,869	5,856,781
Daily increase	3,895	13,795

QLD	Jurisdictions	Commonwealth
Cumulative	2,851,131	4,188,053
Daily increase	9,280	25,240

WA	Jurisdictions	Commonwealth
Cumulative	1,632,953	1,910,426
Daily increase	5,415	12,589

TAS	Jurisdictions	Commonwealth
Cumulative	452,003	375,977
Daily increase	1,613	2,131

SA	Jurisdictions	Commonwealth
Cumulative	1,184,498	1,324,599
Daily increase	6,150	9,047

ACT	Jurisdictions	Commonwealth
Cumulative	476,586	471,949
Daily increase	1,639	755

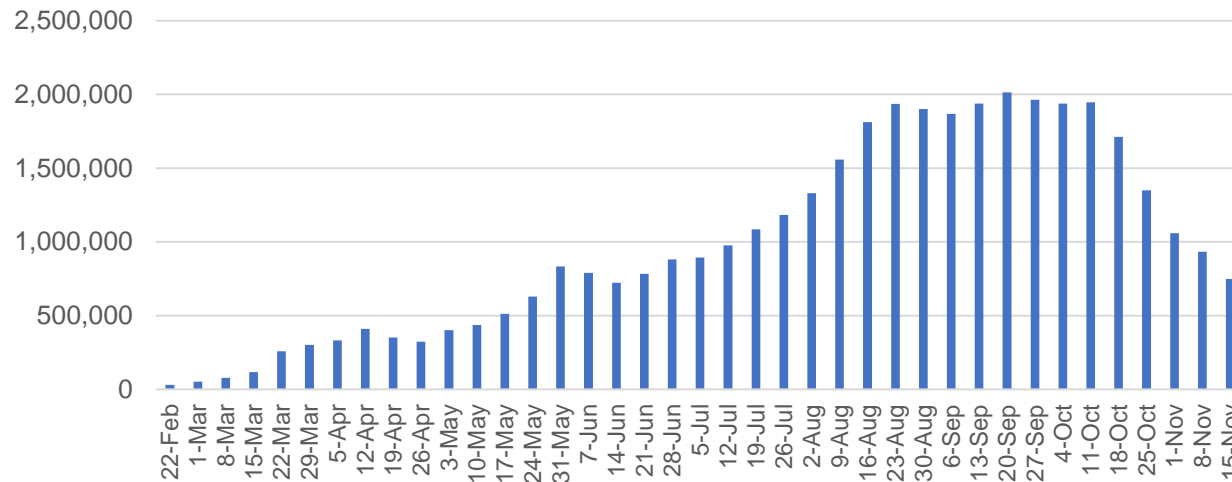
NT	Jurisdictions	Commonwealth
Cumulative	220,455	151,266
Daily increase	805	1,160

Vaccine milestone charts

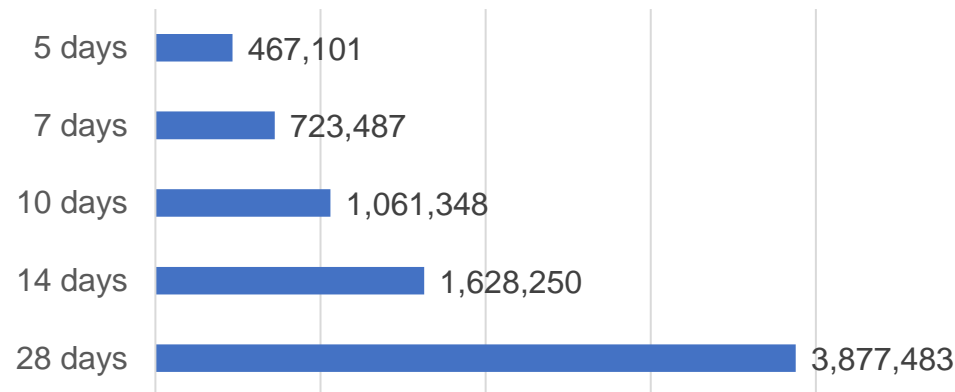
Data as at:
23 Nov 2021

Australia's COVID-19
Vaccine Roadmap

Doses Administered by Week

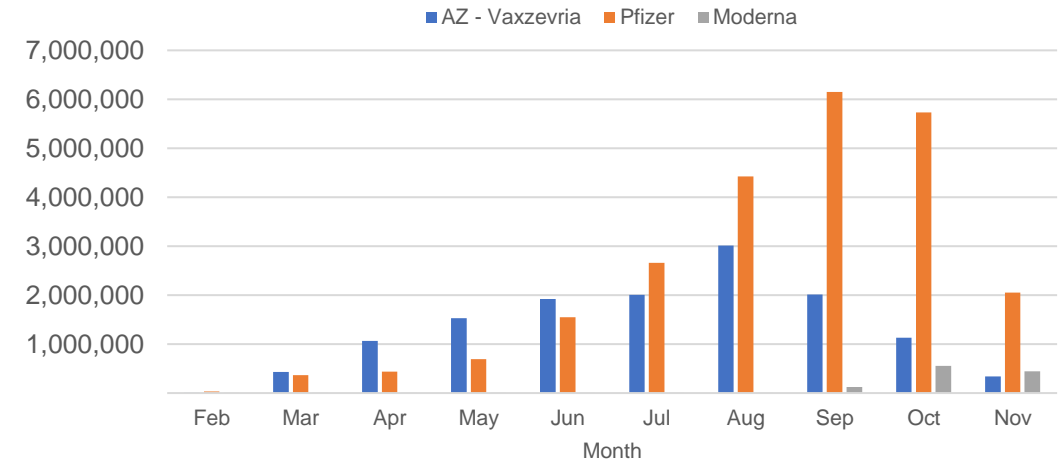


Doses Reported

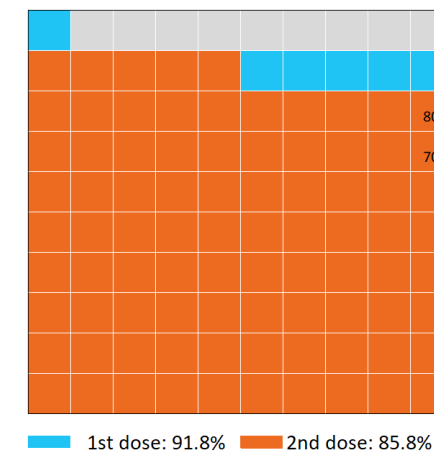


*Sourced from the Australian Immunisation Register.

Doses by administration month and vaccine type



Eligible population percentage coverage



*Each square represents 1% of the national population.
Squares are filled as milestones are achieved.

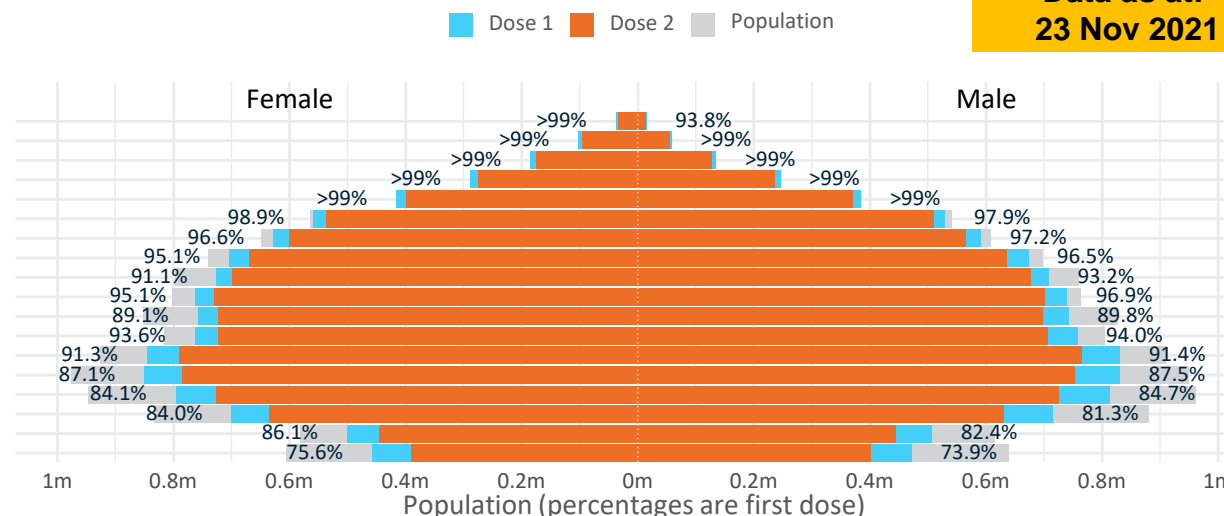
Doses by age and sex

First and second doses by age and sex

Australia's COVID-19
Vaccine Roadmap

Data as at:
23 Nov 2021

Age	Dose 1	Dose 2
95+	52,097 (98.5%)	47,297 (89.4%)
90-94	160,654 (>99%)	149,573 (94.4%)
85-89	319,552 (>99%)	301,802 (95.4%)
80-84	534,201 (>99%)	510,860 (96.7%)
75-79	800,563 (>99%)	770,982 (>99%)
70-74	1,088,834 (98.5%)	1,047,481 (94.8%)
65-69	1,220,104 (97.0%)	1,165,434 (92.6%)
60-64	1,377,411 (95.9%)	1,307,217 (91.0%)
55-59	1,434,611 (92.2%)	1,376,677 (88.5%)
50-54	1,503,049 (96.1%)	1,432,693 (91.6%)
45-49	1,501,084 (89.5%)	1,421,481 (84.8%)
40-44	1,522,341 (94.0%)	1,430,381 (88.3%)
35-39	1,680,649 (91.6%)	1,558,699 (84.9%)
30-34	1,687,895 (87.7%)	1,542,447 (80.2%)
25-29	1,619,273 (84.9%)	1,458,746 (76.5%)
20-24	1,421,247 (83.0%)	1,269,308 (74.1%)
16-19	1,007,826 (84.3%)	891,596 (74.6%)
12-15	929,691 (74.7%)	789,850 (63.5%)



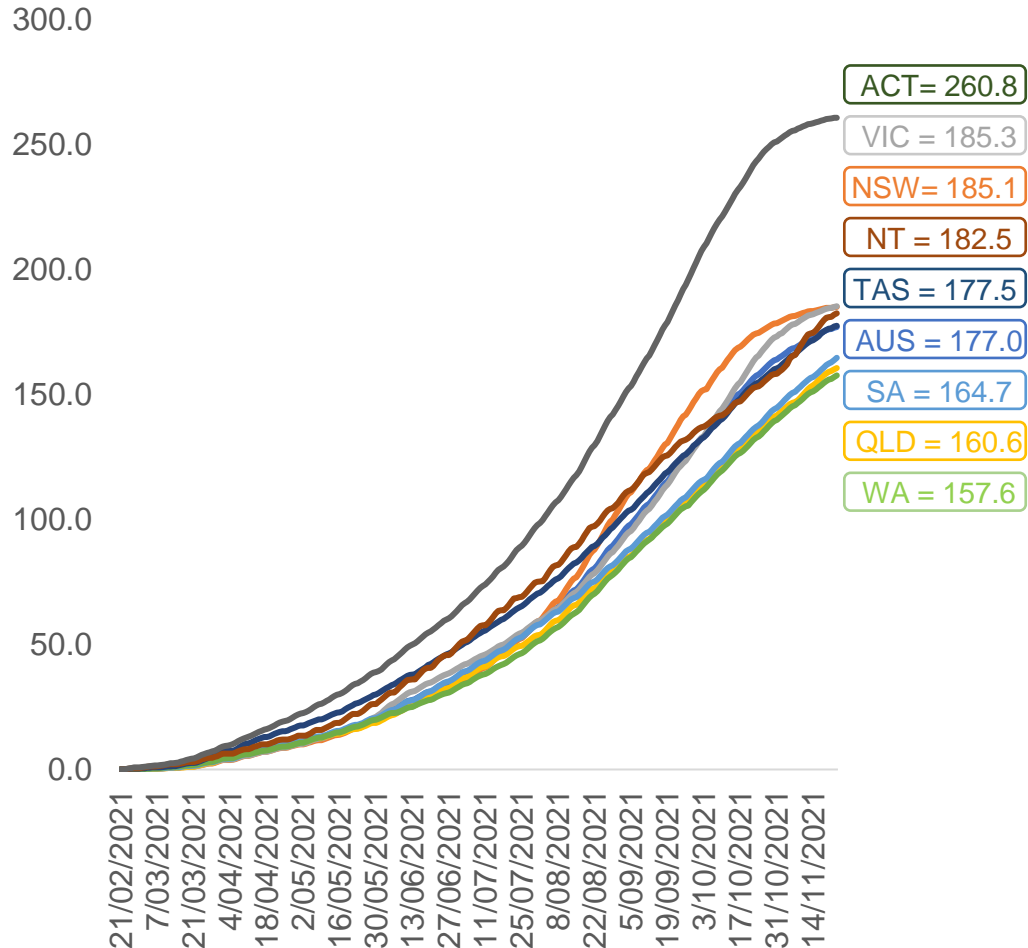
	AUS	ACT	NSW	NT	QLD	SA	TAS	VIC	WA
16 and over - dose 1	18,931,391	345,232	6,201,193	164,938	3,507,633	1,266,524	409,345	5,035,272	1,797,877
16 and over - dose 2	17,682,674	336,754	6,045,541	141,572	3,064,360	1,130,968	377,026	4,855,703	1,560,970
16 and over - population	20,619,959*	344,037	6,565,651	190,571	4,112,707	1,440,400	440,172	5,407,574	2,114,978
16 and over % with dose 1	91.81%	>99%	94.45%	86.55%	85.29%	87.93%	93.00%	93.12%	85.01%
16 and over % with dose 2	85.76%	97.88%	92.08%	74.29%	74.51%	78.52%	85.65%	89.79%	73.81%
50 and over - dose 1	8,491,076	133,579	2,764,347	55,607	1,642,489	636,772	210,924	2,164,684	826,454
50 and over - dose 2	8,110,016	130,892	2,709,534	50,943	1,525,745	589,411	198,105	2,099,862	757,004
50 and over - population	8,749,703	127,802	2,807,793	62,280	1,758,855	674,384	220,036	2,211,211	885,370
50 and over % with dose 1	97.04%	>99%	98.45%	89.29%	93.38%	94.42%	95.86%	97.90%	93.35%
50 and over % with dose 2	92.69%	>99%	96.50%	81.80%	86.75%	87.40%	90.03%	94.96%	85.50%
70 and over - dose 1	2,955,901	43,512	975,948	11,381	567,115	238,620	77,519	745,717	274,560
70 and over - dose 2	2,827,995	42,448	953,115	10,569	534,105	221,913	72,635	720,319	254,163
70 and over - population	2,934,706	39,946	962,606	12,343	577,767	240,514	77,155	743,519	280,281
70 and over % with dose 1	>99%	>99%	>99%	92.21%	98.16%	>99%	>99%	>99%	97.96%
70 and over % with dose 2	96.36%	>99%	>99%	85.63%	92.44%	92.27%	94.14%	96.88%	90.68%
12 to 15 - dose 1	929,691	19,640	316,488	9,074	168,601	53,863	18,595	263,626	72,820
12 to 15 - dose 2	789,850	18,754	296,185	6,579	124,931	37,661	14,474	236,738	49,484
12 to 15 - population	1,243,990	19,693	390,330	13,060	270,146	82,747	26,308	308,611	132,869
12 to 15 % with dose 1	74.73%	>99%	81.08%	69.48%	62.41%	65.09%	70.68%	85.42%	54.81%
12 to 15 % with dose 2	63.49%	95.23%	75.88%	50.38%	46.25%	45.51%	55.02%	76.71%	37.24%

*National population will not equal sum of listed jurisdictions due to a small number of people counted in national population residing in some 'other' territories. Sum of state doses will not add to national total as some records are unable to be geocoded to a State or Territory.

Doses sourced from Australian Immunisation Register, population from ABS ERP June 2020

Vaccinations by location

Cumulative total doses administered vs eligible state populations*

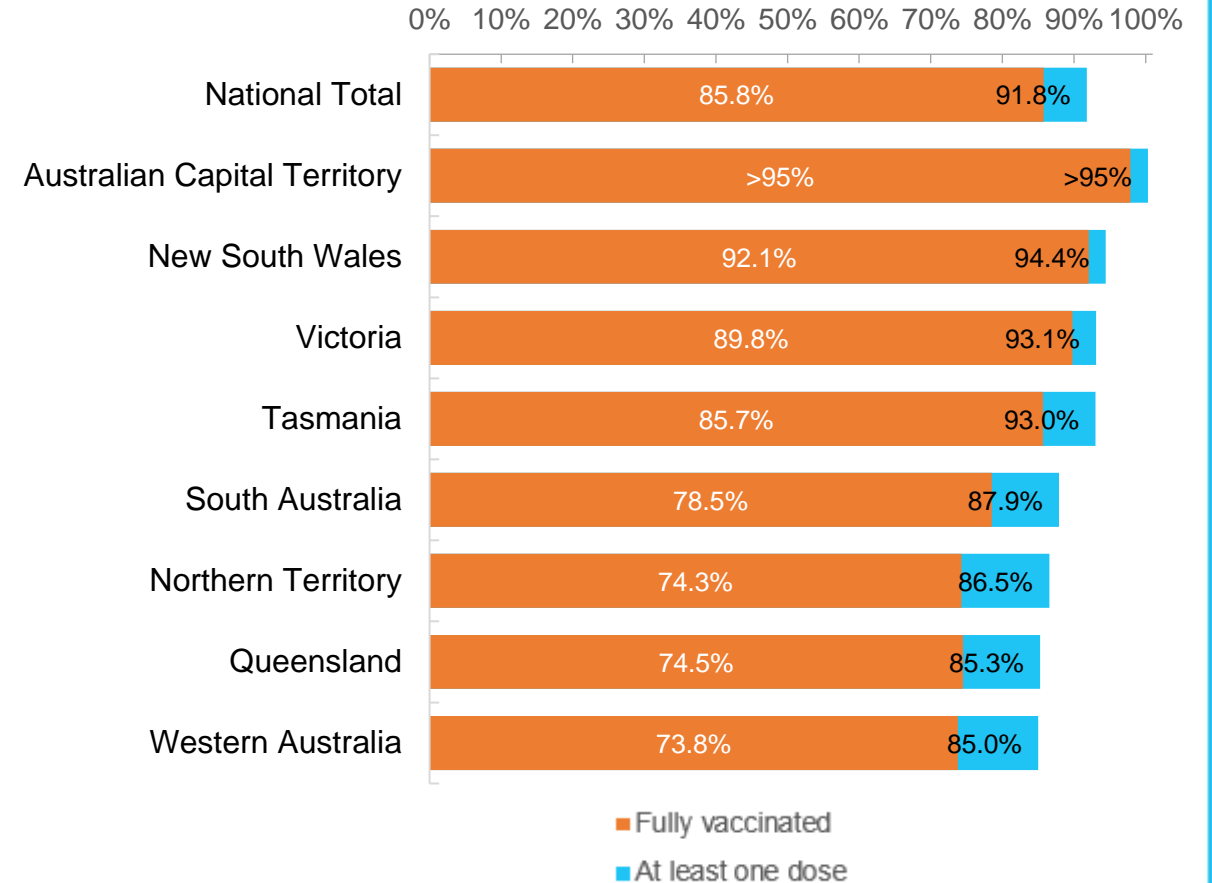


*Not an indication of percentage vaccinated, numbers will exceed 100 due to multiple doses required per person of the population. All doses are included, including those for the 12-15 cohort, and are based on vaccination provider location.

Data as at:
23 Nov 2021

Australia's COVID-19
Vaccine Roadmap

First and Second Doses by state of residence



Aboriginal and Torres Strait Islander peoples

Number of people vaccinated

Data as at:
23 Nov 2021
Updated weekly

Australia's COVID-19
Vaccine Roadmap



381,625

people over the age of 16
have had at least one dose

71.9%

of people over the age of 16
have had at least one dose



320,060

people over the age of 16
are fully vaccinated

60.2%

of people over the age of 16 are
fully vaccinated



**37,605
(52.4%)**

people aged 12-15 years
have had at least one dose

173 Aboriginal community controlled health services (ACCHS)

0#	50	27	41	12	3	21	19
ACT	NSW	NT	QLD	SA	TAS	VIC	WA

Medicare Address State ^{##}	Individuals Dose 1	Individuals Dose 1 %	Individuals Dose 2	Individuals Dose 2 %
Australian Capital Territory	4,887	89.6%	4,643	85.0%
New South Wales	136,135	84.9%	128,941	80.3%
Northern Territory	35,557	77.3%	26,333	56.9%
Queensland	92,212	64.0%	69,983	48.4%
South Australia	16,558	64.5%	12,945	50.2%
Tasmania	13,434	77.9%	12,005	69.3%
Victoria	35,134	86.8%	32,570	80.3%
Western Australia	34,563	53.8%	23,620	36.6%
Unknown/Other Territories	13,145	48.7%	9,020	33.3%
Totals	381,625	71.9%	320,060	60.2%

Source: Australian Immunisation Register

*Identifying as Aboriginal and Torres Strait Islander is optional and the estimated population may be under reported.

**Includes all Aboriginal and Torres Strait Islander peoples who have received a vaccination, not limited to those administered in an ACCHS setting

#ACCHS in the ACT are currently operating as a Commonwealth Vaccine Clinics so not included to avoid double counting

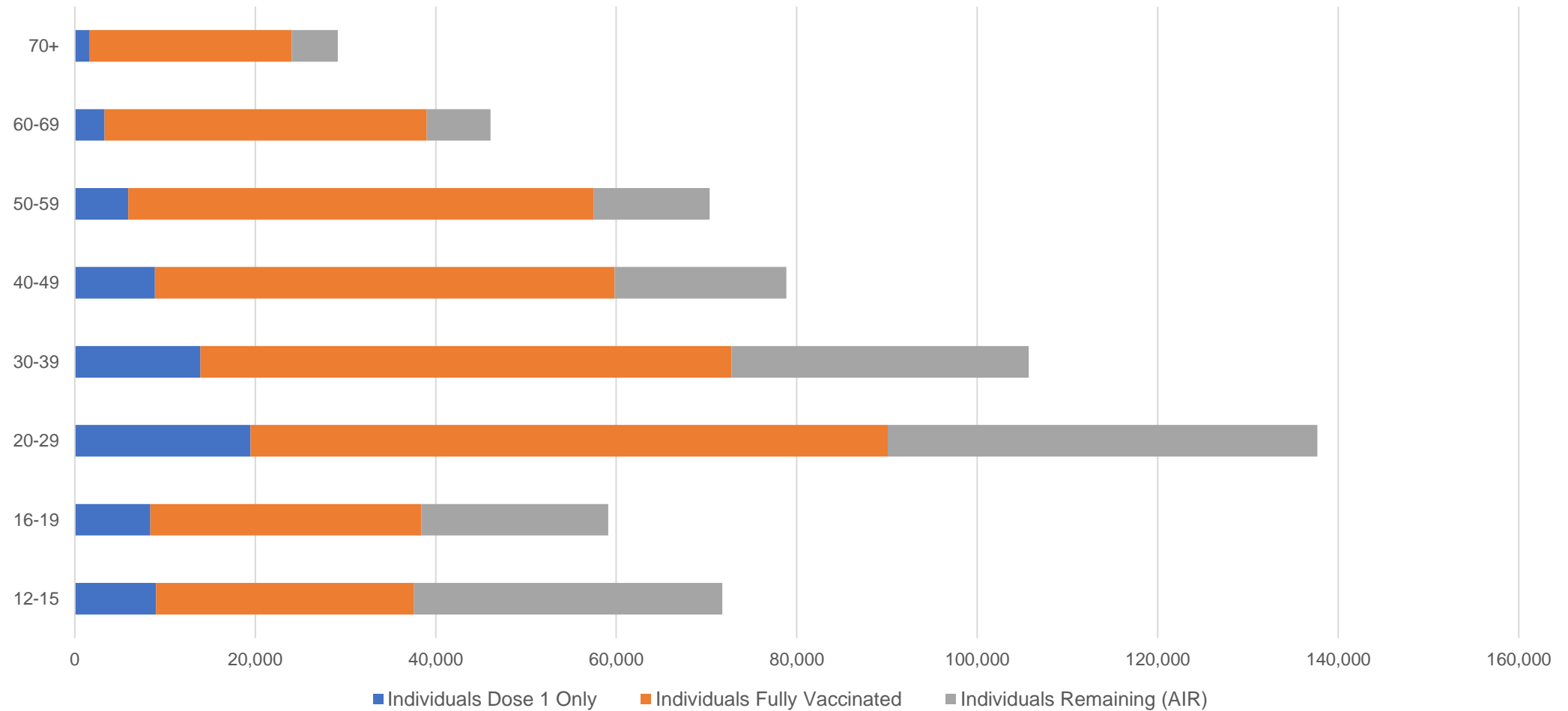
##The above table includes all identified Aboriginal and Torres Strait Islander people who are aged 16 and above by their state of residence.

Aboriginal and Torres Strait Islander peoples

Number of people vaccinated by age

Data as at:
23 Nov 2021
Updated weekly

Australia's COVID-19
Vaccine Roadmap



Source: Australian Immunisation Register

Data as at:
23 Nov 2021

Commonwealth primary care



Primary care vaccine administration sites

5,638	137	173	3,447
GPs	CVCs	ACCHS	Pharmacies



21,849,314 total vaccine doses administered
primary care settings as at 23 November
+ 72,766 recorded in the last 24 hours

Primary care vaccinations by provider type

	Doses administered	Daily increase	7 day increase
General Practice* includes other Commonwealth	19,615,476	49,117	318,546
Pharmacy	2,233,838	23,649	144,281



151,485 doses administered to persons
residing in other territories or with
missing residential information

*General practice includes Commonwealth Vaccination Clinics, Aboriginal Community Health Centres, Royal Flying Doctor Service and other Commonwealth vaccination facilities

Source: Australian Immunisation Register

Data as at:
23 Nov 2021

Commonwealth aged care and disability doses administered



1,102,215 (+ 4,748 last 24 hours)

Total vaccine doses administered in aged care and disability facilities as at 23 November

Number of doses administered as part of the Commonwealth aged and disability care rollout

NSW
519,534
(+2,292 daily increase)

VIC
204,077
(+363 daily increase)

QLD
167,439
(+621 daily increase)

WA
77,804
(+787 daily increase)

TAS
18,531
(+160 daily increase)

SA
68,252
(+274 daily increase)

ACT
14,012
(+63 daily increase)

NT
6,208
(-1[#] daily increase)

26,358 doses administered to persons residing in other territories or with missing residential information

*Sourced from the Australian Immunisation Register. Includes all persons vaccinated at participating residential aged care, disability and related industry settings.

**State level breakdown indicates the residential location and may not align to the state in which the vaccination occurred.

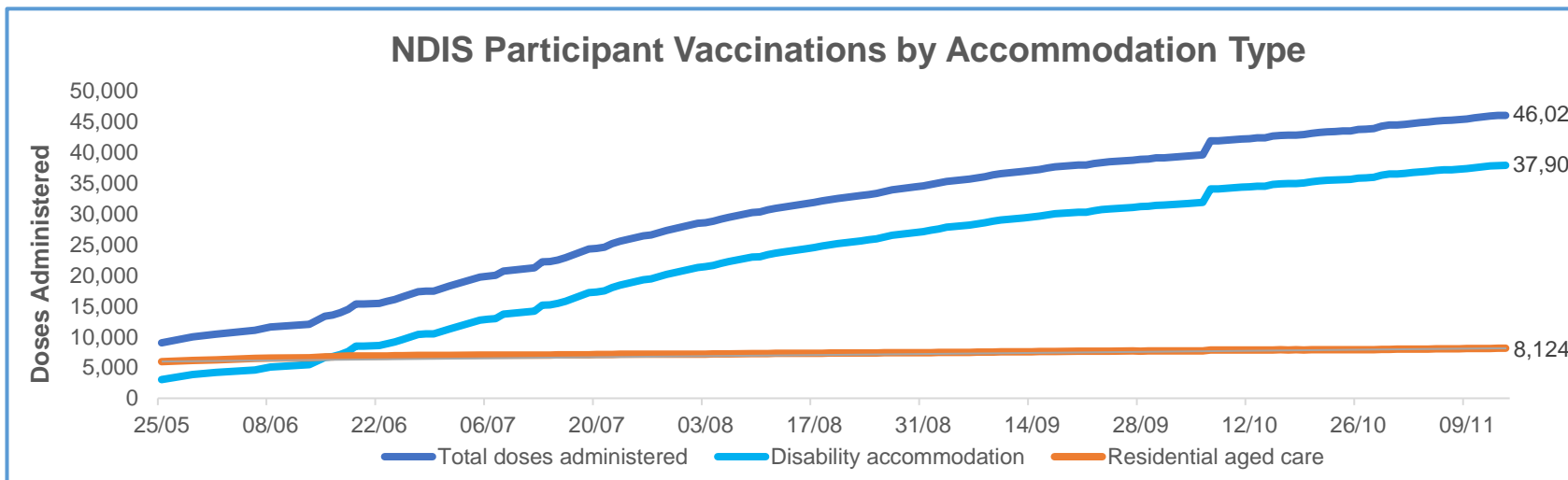
Numbers are calculated as difference in daily cumulative reported numbers to allow for historical corrections in all data sources. This can occasionally result in negative numbers, such as for NT, where historical details about doses have been updated.

Source: Australian Immunisation Register

Data as at:
15 Nov 2021*

Vaccination rate of people with disability and the disability workforce

Phase 1a – People with disability living in shared accommodation



	Total people with at least one dose	People fully vaccinated	Total number of individuals in cohort	Total doses administered	% People with at least one dose	% People fully vaccinated
NDIS participants living in shared accommodation **	23,650	22,378	27,603	46,028	85.7%	81.1%
NDIS screened workers ***	207,058	194,060	242,348	401,118	85.4%	80.1%



* Updates are available Monday to Friday on participants, and bi-weekly for workers, numbers may be up to four days old.

** Shared accommodation means two or more people with disability living in shared residential accommodation and NDIS participants living in Residential Aged Care accommodation as per the eligibility criteria of Phase 1a.

*** Total number of workers within the NDIS Commission Worker Screening database who have ever been successfully screened and linked to an NDIS registered provider or participant.

Source: Linkage between National Disability Insurance Agency data, NDIS Quality and Safeguards Commission data and the Australian Immunisation Register.

Residential aged care vaccination rollout

Residential aged care facilities status

100% Commonwealth facilities visited (2,556 planned sites)

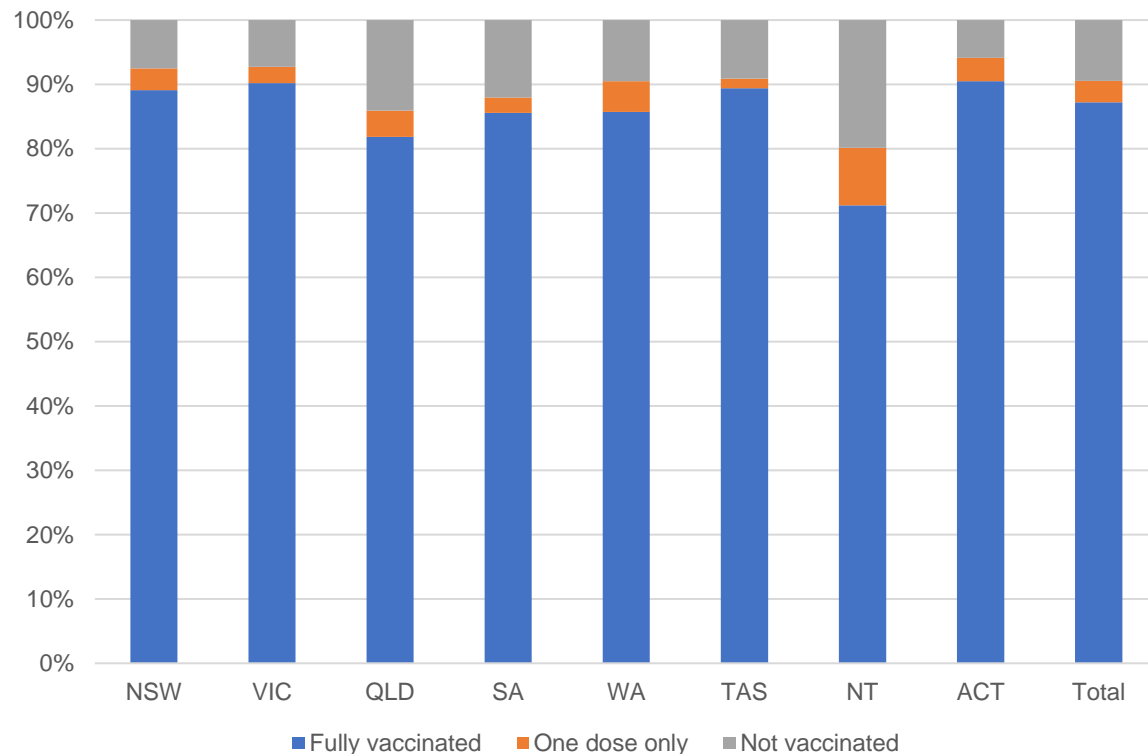
161,401 People fully vaccinated

167,568 People with at least one dose

Australia's COVID-19 Vaccine Roadmap

Data as at:
23 Nov 2021

Aged care resident vaccinations



Aged care worker vaccinations

Jurisdictions	Total workers with at least one dose	Workers fully vaccinated	% Workers with at least one dose	% Workers fully vaccinated
NSW	78,146	77,996	99.6%	99.4%
VIC	70,657	70,067	99.5%	98.6%
QLD	48,991	48,614	99.8%	99.1%
SA	27,587	26,982	100.0%	97.8%
WA	23,620	23,402	100.0%	99.1%
TAS	7,676	7,448	100.0%	97.0%
NT	847	842	100.0%	99.4%
ACT	2,992	2,974	100.0%	99.4%
Total	260,516	258,325	99.7%	98.9%

Source: My Aged Care Portal staff vaccination progress

**Resident vaccination information is reported manually by service providers

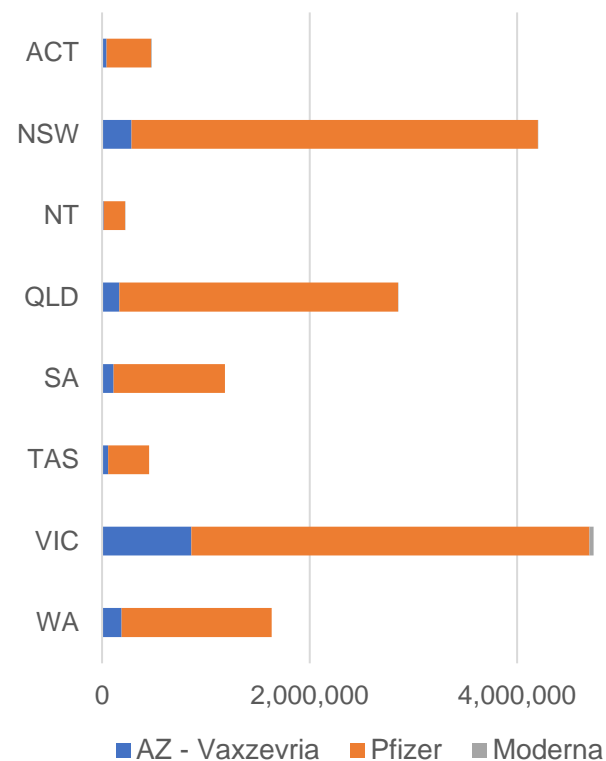
*Status updates are provided by facilities at least once per week. Reporting is updated Monday to Friday to encompass different facility updates being made on different days.

Data is sourced directly from Aged Care Service Providers and is not drawn or closely aligned with data from AIR due to inconsistencies and potential lags in uploading of records.

Data as at:
23 Nov 2021

Jurisdiction administered

Total vaccine doses administered in State and Territory clinics as at 23 November



15,754,520 total vaccine doses administered
in State and Territory clinics as at 23 November
+ **31,146** recorded in the last 24 hours
+ **241,433** recorded in the last 7 days

NSW
4,201,025
(+2,349 daily
increase)

VIC
4,735,869
(+3,895 daily
increase)

QLD
2,851,131
(+9,280 daily
increase)

WA
1,632,953
(+5,415 daily
increase)

TAS
452,003
(+1,613 daily
increase)

SA
1,184,498
(+6,150 daily
increase)

ACT
476,586
(+1,639 daily
increase)

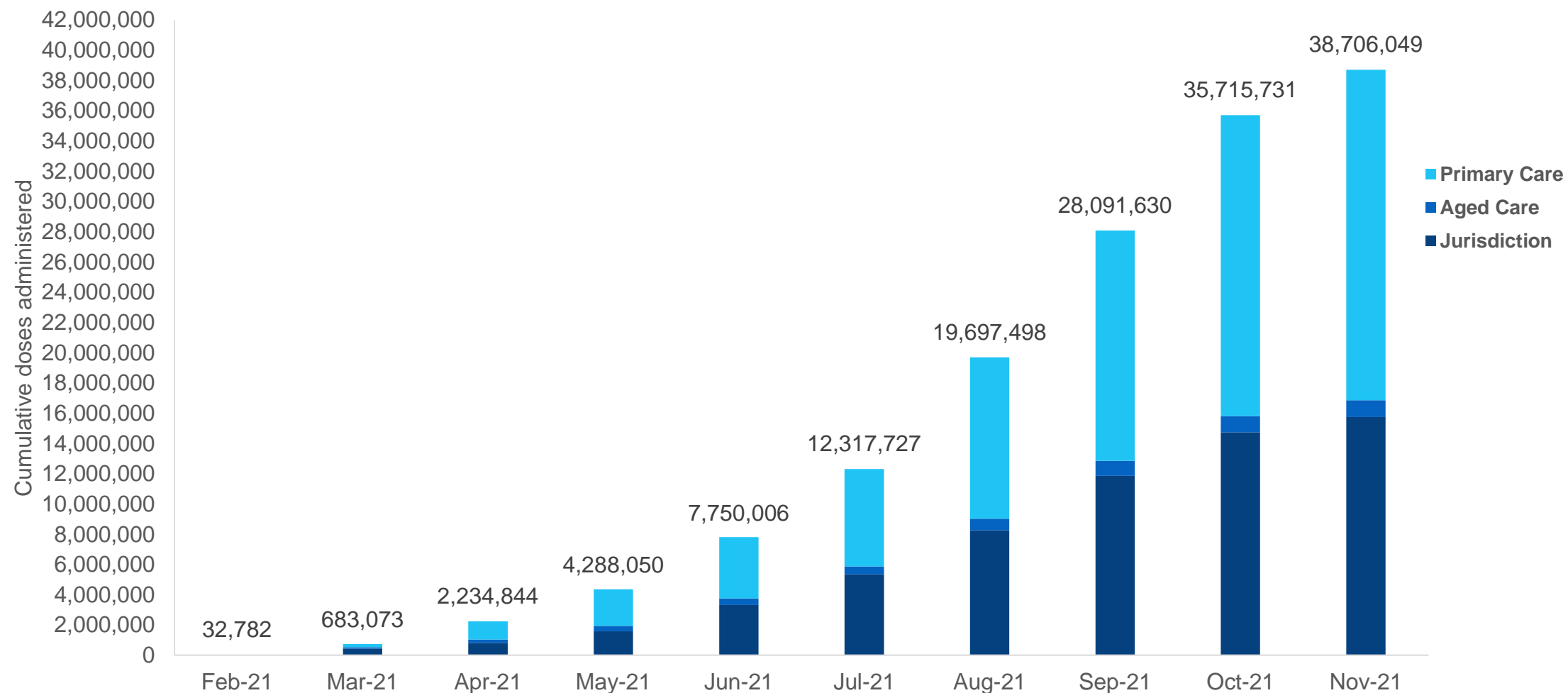
NT
220,455
(+805 daily
increase)

*Sourced from the Australian Immunisation Register and self-reported data. Numbers are calculated as difference in daily cumulative reported numbers to allow for historical corrections in all self-reported data sources.

Cumulative doses administered by channel

Data as at:
23 Nov 2021

Australia's COVID-19
Vaccine Roadmap



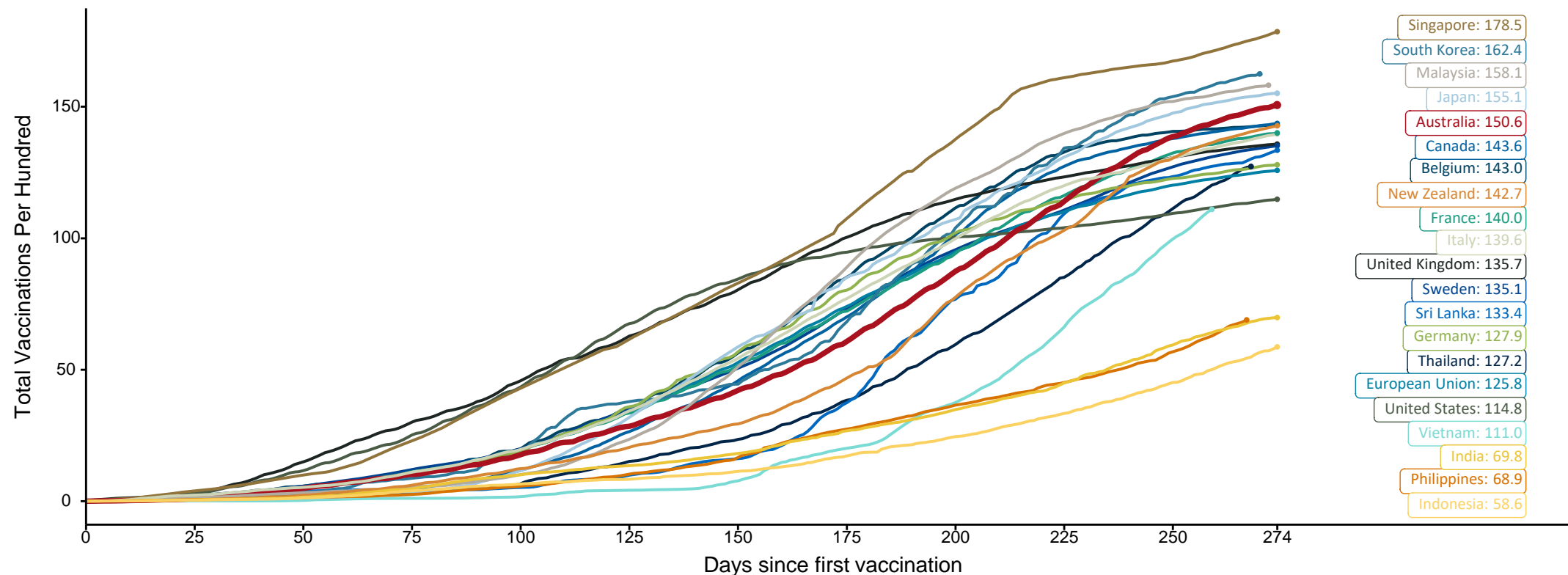
Source: Australian Immunisation Register

Doses at equivalent stages of rollout (Day 274)

Data as at:
23 Nov 2021

The x-axis is truncated at the length of Australia's vaccination program. Countries with intermittent reporting have had their doses per 100 imputed to Australia's current stage of rollout. Israel excluded as it is beyond scale of the graph

Cumulative doses administered (23 Nov): **38,706,049**

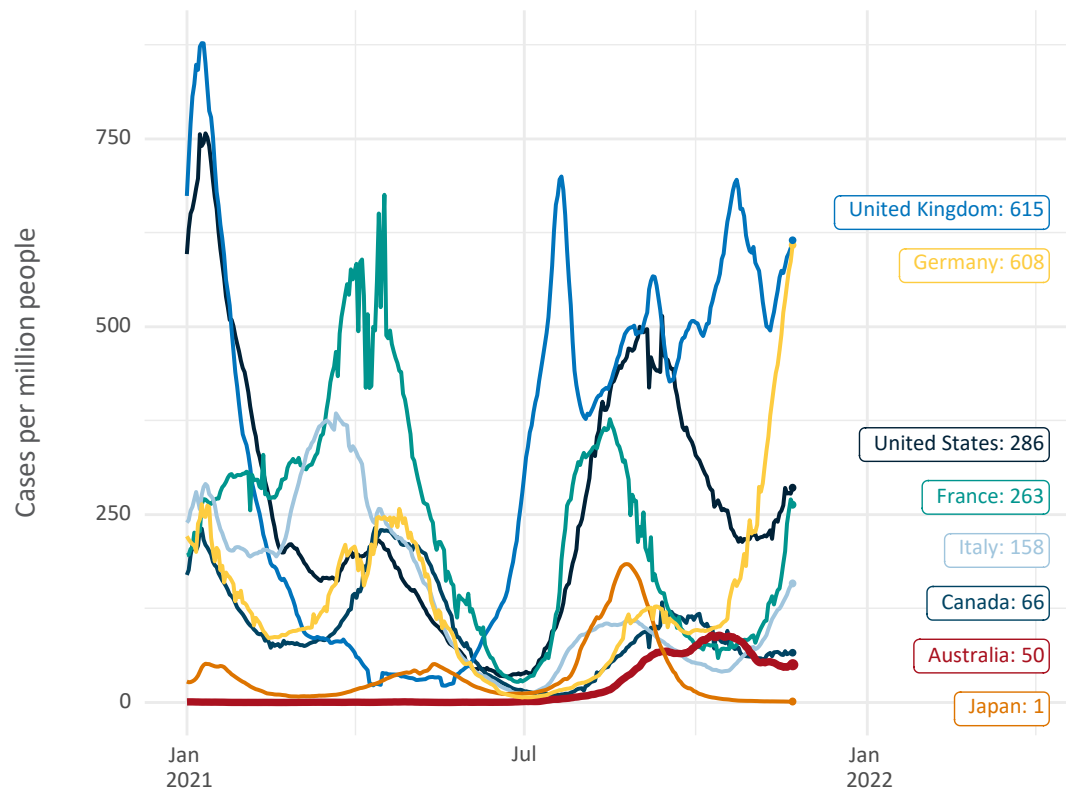


Note: From 15 September 2021, data for Australia includes all doses administered to people 12 and over. Prior to 15 September, data was for 16 and over
Source: Department of Health (Australia), Our World in Data (international)
Latest data: 23 November

International data – COVID-19

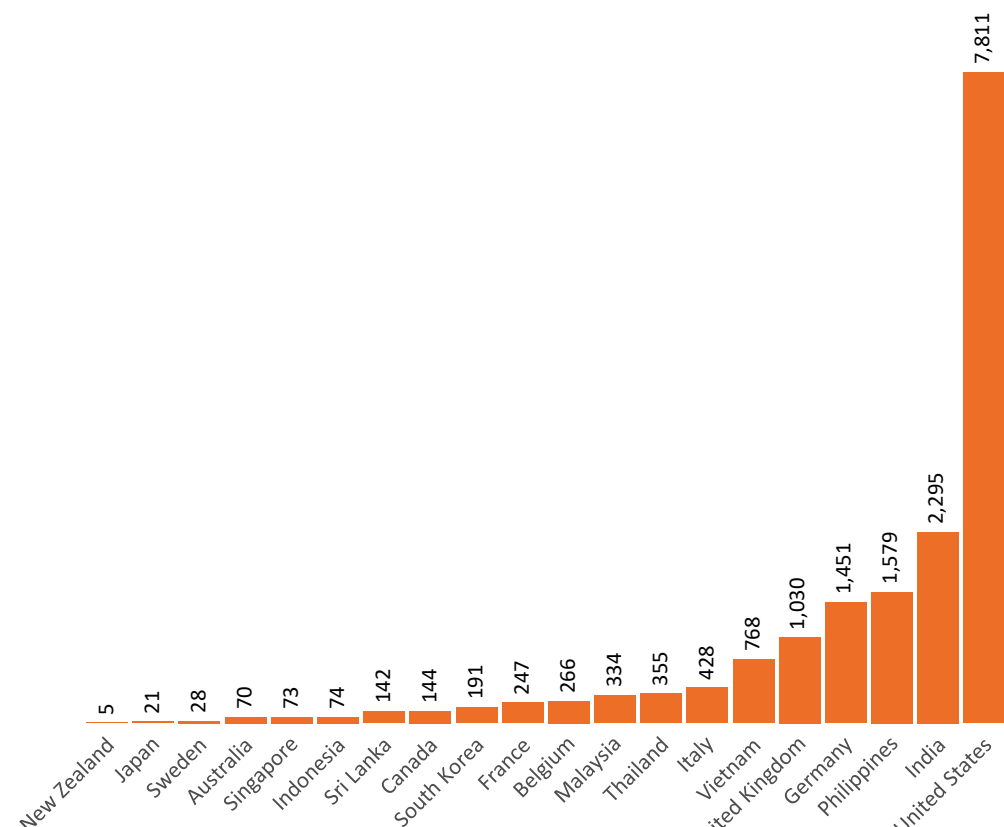
Data as at:
23 Nov 2021

New daily cases per million in 2021, Australia and G7 countries
Smoothed - 7 day average



Source: OWID
Data downloaded: 24 Nov 2021 08:00
Latest data: 22 Nov 2021

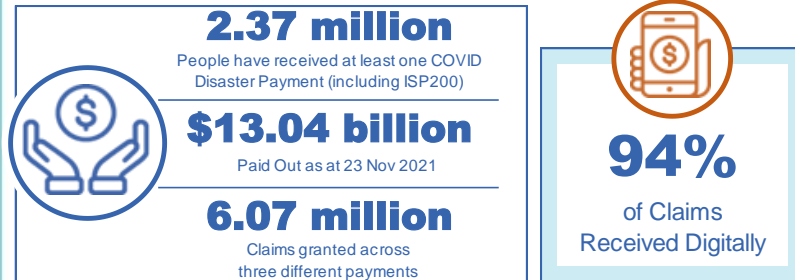
COVID-19 deaths in past 7 days - Australia and select countries



Source: OWID
Data downloaded: 24 Nov 2021 08:00
Latest data: 22 Nov 2021

Data as at midnight:
23 Nov 2021

Pandemic Response Payments (Current)



COVID Disaster Payment:	5.86 million claims received - 2.19 million individuals paid a total of \$12.58 billion.
\$200 Income Support Payment:	350,000 claims received - 183,000 individuals paid a total of \$268.66 million.
Pandemic Leave Disaster Payment:	137,000 claims received - 117,000 individuals paid a total of \$192.15 million.



COVID Disaster Payment

assisting during a lockdown event in a Commonwealth hotspot.

Income Support Payment \$200

for income support recipients who lost at least 8 hours of work.

Pandemic Leave Disaster Payment

for those who have to self-isolate, quarantine or care.

For more information visit:
servicesaustralia.gov.au

CURRENT COVID-19 DISASTER PAYMENTS

New South Wales

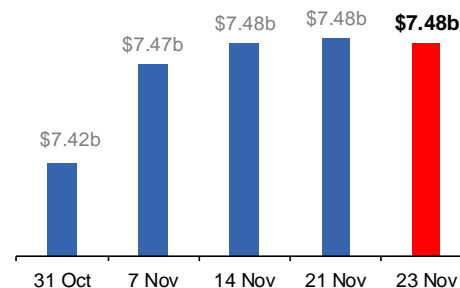
Lockdown from 24 Jun to 10 Oct
Claiming period ends 27 Nov

1.08m people have received at least one COVID Disaster Payment.

\$7.48b paid out as at 23 Nov 2021.

\$2m paid in initial and reoccurring payments in the week ending 21 Nov 2021.

Cumulative payments made by State since activation on 1 Jul 2021.



Victoria

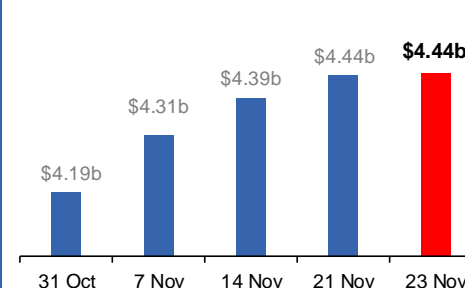
Lockdown (#6) since 6 Aug to 28 Oct
Claiming period ends 9 Dec

745,000 people have received at least one COVID Disaster Payment.

\$4.44b paid out as at 23 Nov 2021.

\$46m paid in initial and reoccurring payments in the week ending 21 Nov 2021.

Cumulative payments made by State since activation on 8 Jun 2021.



Australian Capital Territory

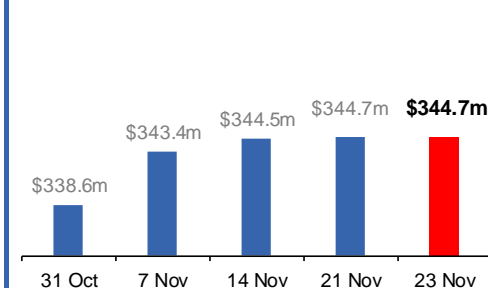
Lockdown since 12 Aug to 14 Oct
Claiming period ends 25 Nov

65,000 people have received at least one COVID Disaster Payment.

\$344.7m paid out as at 23 Nov 2021.

\$162,000 paid in initial and reoccurring payments in the week ending 21 Nov 2021.

Cumulative payments made by State since activation on 20 Aug 2021.



Northern Territory

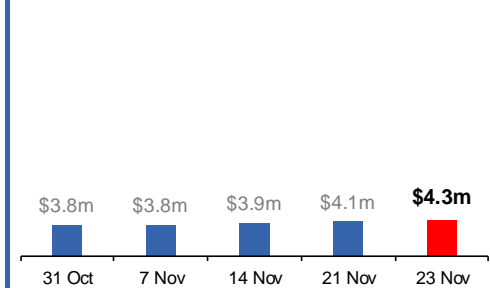
Lockdown (#3) from 16 Nov to 22 Nov
Claiming period ends 13 Dec

6,300 people have received at least one COVID Disaster Payment.

\$4.3m paid out as at 23 Nov 2021.

\$257,000 paid in initial payments in the week ending 21 Nov 2021.

Cumulative payments made by State since activation on 25 Aug 2021.



Pandemic Response Payments (Closed Events)

Data as at midnight:
23 Nov 2021

CLOSED COVID-19 DISASTER PAYMENTS

