



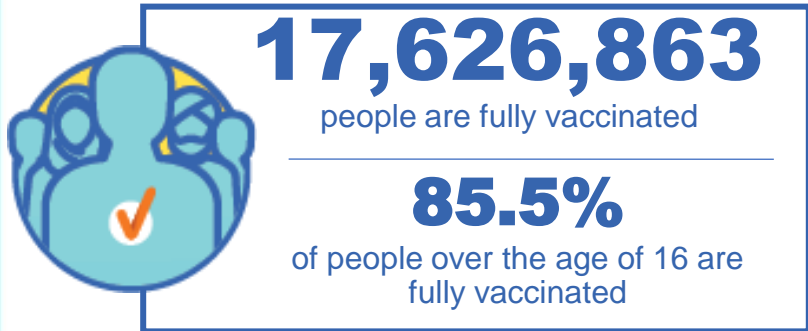
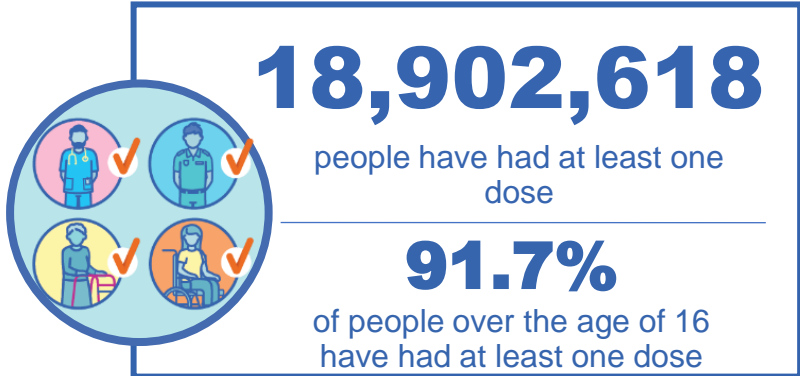
**Australian Government**  
**Operation COVID Shield**

# COVID-19 Vaccine Roll-out

23 November 2021

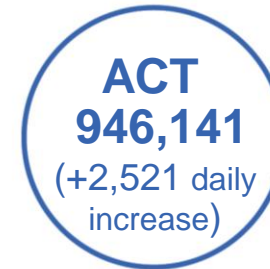
Data as at:  
22 Nov 2021

## Total vaccine doses



**38,597,389** total vaccine doses administered nationally as at 22 November

**+142,529** recorded in the last 24 hours



\*Administration state breakdown indicates state in which a vaccine was administered  
\*\*Overall dose count includes instances of more than two doses per person in a small number of cases.

Source: Australian Immunisation Register

Data as at:  
22 Nov 2021

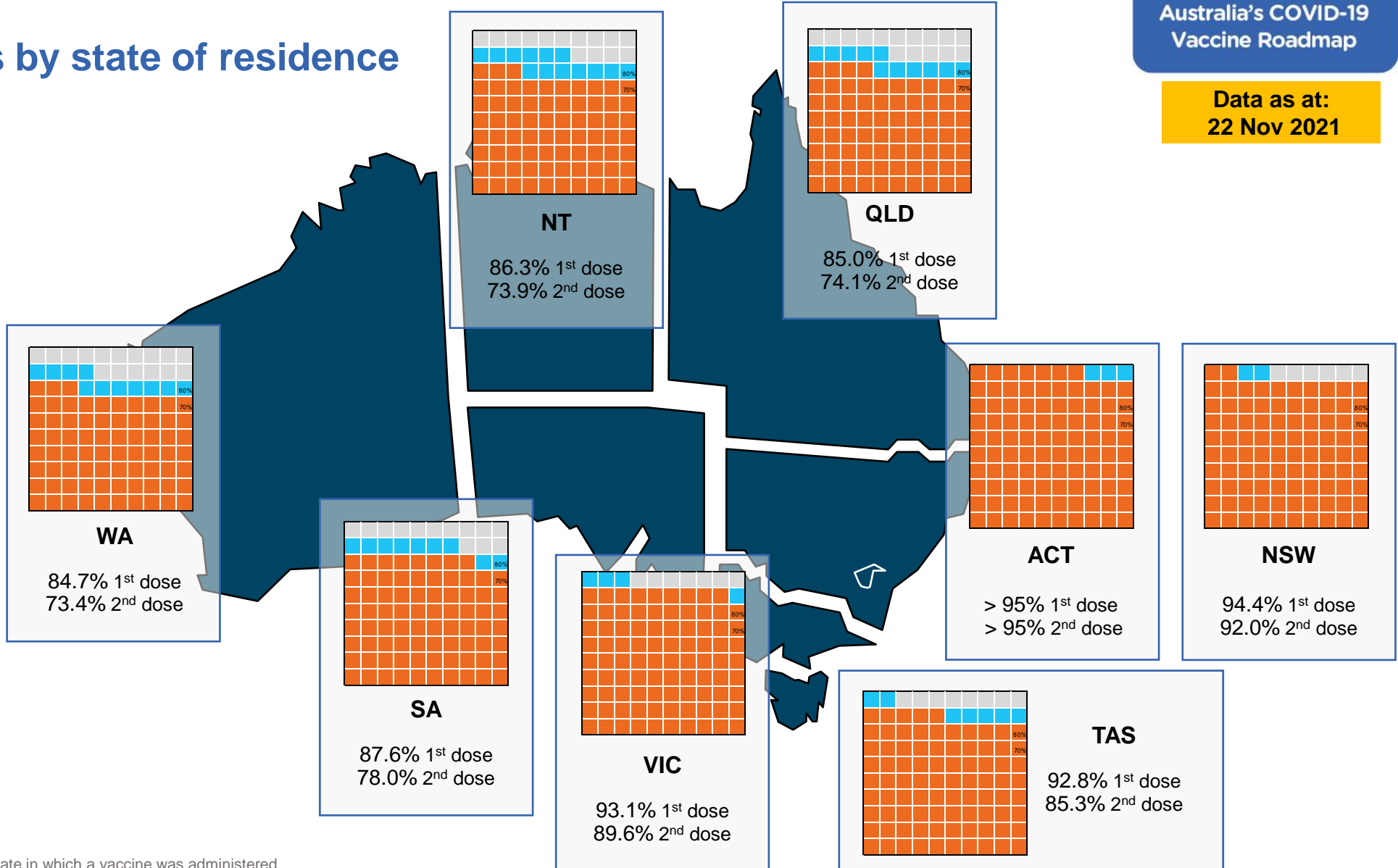
# Vaccinations by state of residence

## First doses

Age	Today	4 weeks ago	8 weeks ago
16+	91.7%	87.4%	77.6%
50+	>95%	94.8%	89.4%
70+	>95%	>95%	>95%

## Fully vaccinated

Age	Today	4 weeks ago	8 weeks ago
16+	85.5%	74.7%	53.5%
50+	92.4%	84.3%	71.3%
70+	>95%	89.3%	79.3%



\*Residential state may differ from the state in which a vaccine was administered

## Commonwealth and Jurisdiction vaccine doses administered

Data as at:  
22 Nov 2021



**38,597,389** total vaccine doses administered nationally as at 22 November

**+ 142,529** recorded in the last 24 hours

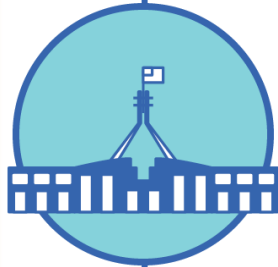


**15,723,374**

doses administered by state and territory facilities

**+ 60,246**

recorded in the last 24 hours



**22,874,015**

doses administered by commonwealth facilities

**+ 82,283**

recorded in the last 24 hours

**21,776,548** total vaccine doses administered in primary care settings

**1,097,467** total vaccine doses administered in aged care and disability settings

NSW	Jurisdictions	Commonwealth
Cumulative	4,198,676	8,659,681
Daily increase	2,246	11,956

VIC	Jurisdictions	Commonwealth
Cumulative	4,731,974	5,842,986
Daily increase	14,336	17,946

QLD	Jurisdictions	Commonwealth
Cumulative	2,841,851	4,162,813
Daily increase	25,943	26,949

WA	Jurisdictions	Commonwealth
Cumulative	1,627,538	1,897,837
Daily increase	5,610	13,801

TAS	Jurisdictions	Commonwealth
Cumulative	450,390	373,846
Daily increase	1,934	1,820

SA	Jurisdictions	Commonwealth
Cumulative	1,178,348	1,315,552
Daily increase	7,539	8,073

ACT	Jurisdictions	Commonwealth
Cumulative	474,947	471,194
Daily increase	1,769	752

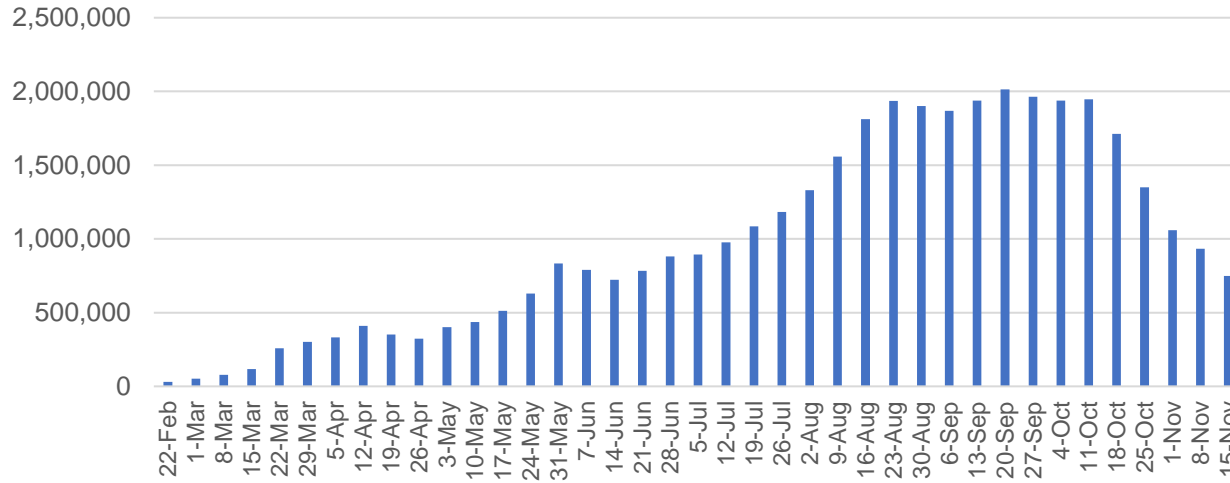
NT	Jurisdictions	Commonwealth
Cumulative	219,650	150,106
Daily increase	869	986

# Vaccine milestone charts

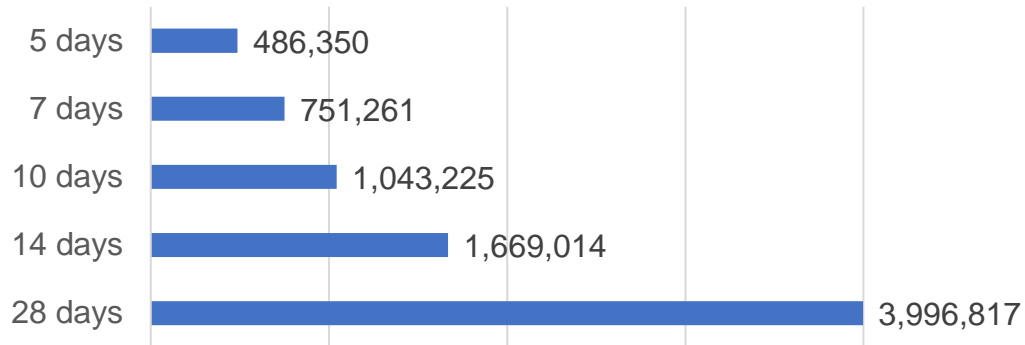
Data as at:  
22 Nov 2021

Australia's COVID-19  
Vaccine Roadmap

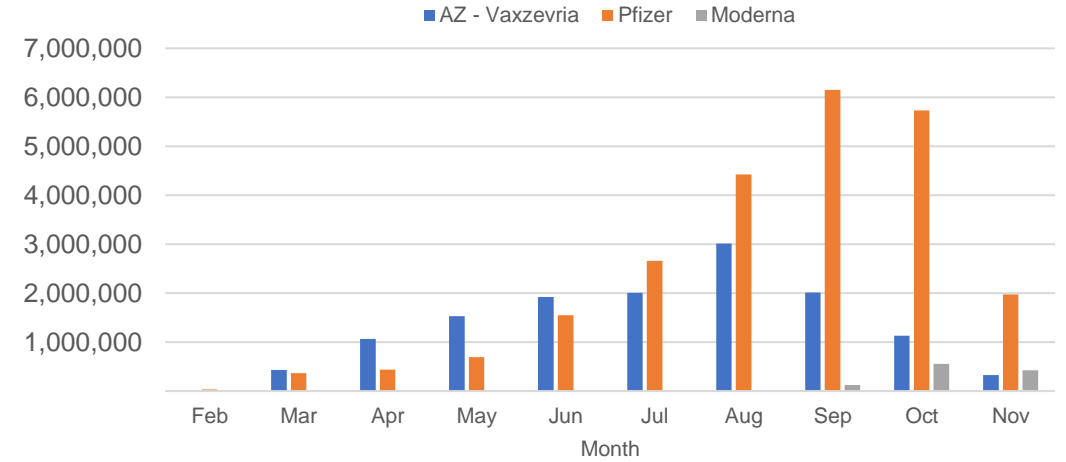
Doses Administered by Week



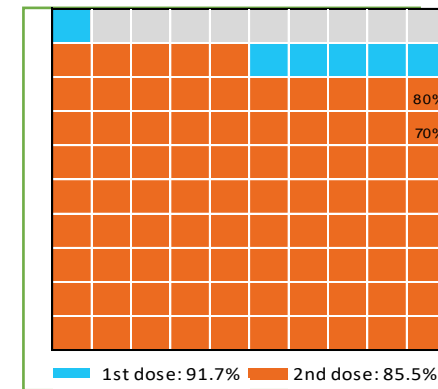
Doses Reported



Doses by administration month and vaccine type



Eligible population percentage coverage



\*Sourced from the Australian Immunisation Register.

\*Each square represents 1% of the national population. Squares are filled as milestones are achieved.

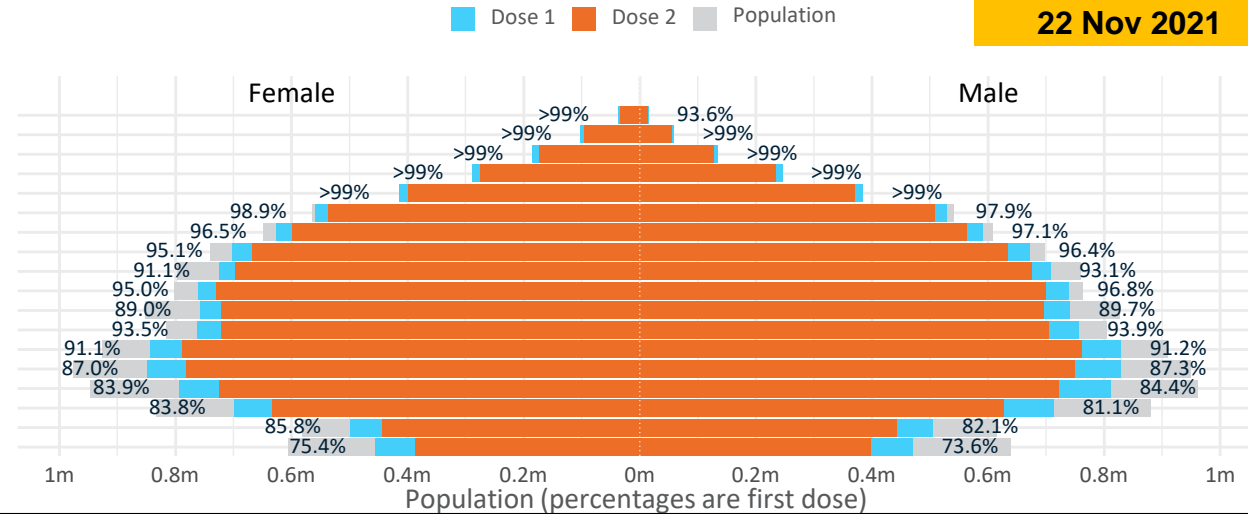
# Doses by age and sex

First and second doses by age and sex

Data as at:  
22 Nov 2021

	16+	50+	70+	12-15
Dose 1	91.67% (18,902,618 doses / 20,619,959 people)	96.97% (8,484,290 doses / 8,749,703 people)	>99% (2,953,842 doses / 2,934,706 people)	74.48% (926,572 doses / 1,243,990 people)
Dose 2	85.48% (17,626,863 doses / 20,619,959 people)	92.45% (8,088,958 doses / 8,749,703 people)	96.13% (2,821,236 doses / 2,934,706 people)	63.02% (783,999 doses / 1,243,990 people)

Age	Dose 1	Dose 2
95+	52,006 (98.3%)	47,142 (89.1%)
90-94	160,476 (>99%)	149,177 (94.2%)
85-89	319,243 (>99%)	301,029 (95.2%)
80-84	533,903 (>99%)	509,763 (96.5%)
75-79	799,957 (>99%)	769,111 (>99%)
70-74	1,088,257 (98.5%)	1,045,014 (94.6%)
65-69	1,219,353 (96.9%)	1,161,878 (92.3%)
60-64	1,376,319 (95.8%)	1,302,759 (90.7%)
55-59	1,433,433 (92.1%)	1,373,858 (88.3%)
50-54	1,501,343 (96.0%)	1,429,227 (91.4%)
45-49	1,499,315 (89.4%)	1,418,033 (84.6%)
40-44	1,519,956 (93.8%)	1,426,304 (88.0%)
35-39	1,677,602 (91.4%)	1,553,473 (84.7%)
30-34	1,684,508 (87.6%)	1,536,763 (79.9%)
25-29	1,615,362 (84.7%)	1,452,634 (76.2%)
20-24	1,417,118 (82.8%)	1,263,597 (73.8%)
16-19	1,004,467 (84.0%)	887,101 (74.2%)
12-15	926,572 (74.5%)	783,999 (63.0%)

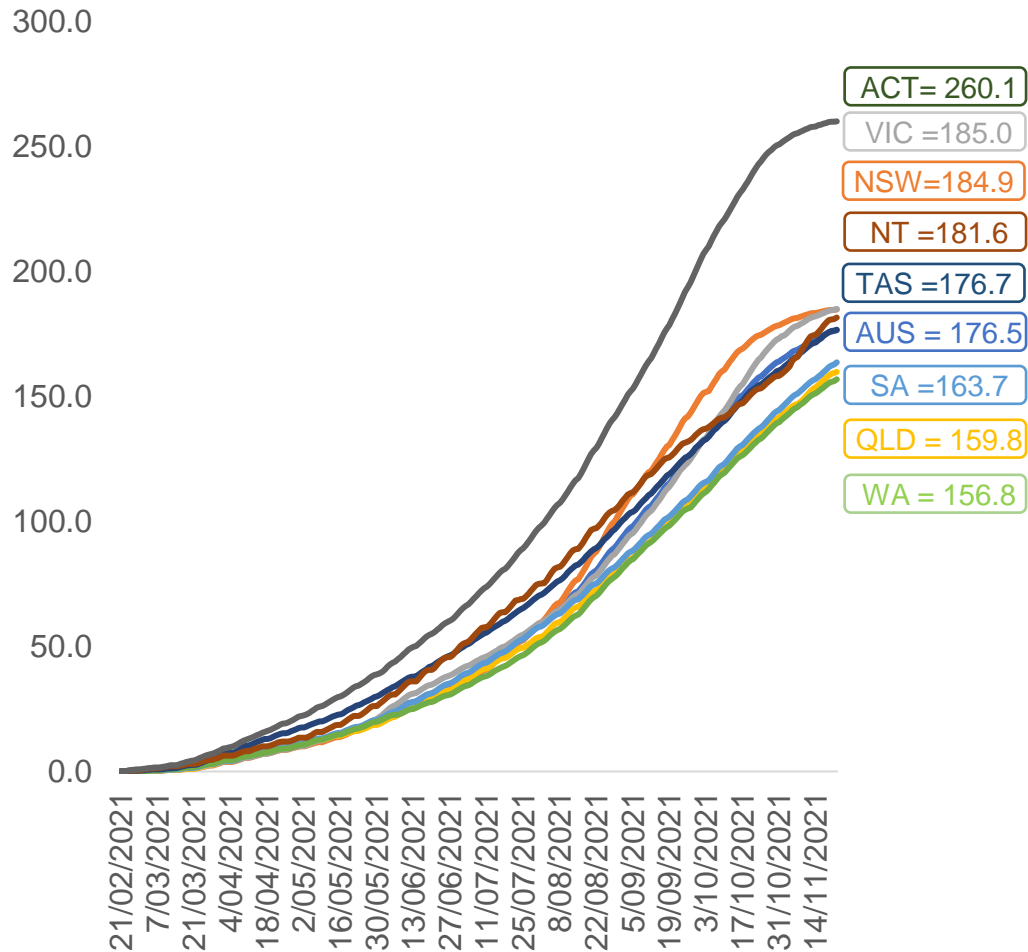


	AUS	ACT	NSW	NT	QLD	SA	TAS	VIC	WA
16 and over - dose 1	18,902,618	345,074	6,199,338	164,416	3,496,379	1,261,088	408,474	5,032,901	1,791,750
16 and over - dose 2	17,626,863	336,303	6,038,649	140,753	3,046,173	1,123,308	375,441	4,845,118	1,552,160
16 and over - population	20,619,959*	344,037	6,565,651	190,571	4,112,707	1,440,400	440,172	5,407,574	2,114,978
16 and over % with dose 1	91.67%	>99%	94.42%	86.28%	85.01%	87.55%	92.80%	93.07%	84.72%
16 and over % with dose 2	85.48%	97.75%	91.97%	73.86%	74.07%	77.99%	85.29%	89.60%	73.39%
50 and over - dose 1	8,484,290	133,537	2,763,605	55,530	1,640,270	635,453	210,723	2,163,738	825,251
50 and over - dose 2	8,088,958	130,734	2,706,560	50,787	1,519,188	586,397	197,457	2,095,666	753,832
50 and over - population	8,749,703	127,802	2,807,793	62,280	1,758,855	674,384	220,036	2,211,211	885,370
50 and over % with dose 1	96.97%	>99%	98.43%	89.16%	93.26%	94.23%	95.77%	97.85%	93.21%
50 and over % with dose 2	92.45%	>99%	96.39%	81.55%	86.37%	86.95%	89.74%	94.77%	85.14%
70 and over - dose 1	2,953,842	43,499	975,611	11,378	566,540	238,233	77,455	745,311	274,305
70 and over - dose 2	2,821,236	42,394	951,958	10,550	532,241	220,923	72,425	718,838	253,212
70 and over - population	2,934,706	39,946	962,606	12,343	577,767	240,514	77,155	743,519	280,281
70 and over % with dose 1	>99%	>99%	>99%	92.18%	98.06%	>99%	>99%	>99%	97.87%
70 and over % with dose 2	96.13%	>99%	98.89%	85.47%	92.12%	91.85%	93.87%	96.68%	90.34%
12 to 15 - dose 1	926,572	19,631	316,313	8,973	167,753	53,344	18,447	262,866	72,329
12 to 15 - dose 2	783,999	18,708	295,412	6,516	123,143	36,999	14,300	235,516	48,433
12 to 15 - population	1,243,990	19,693	390,330	13,060	270,146	82,747	26,308	308,611	132,869
12 to 15 % with dose 1	74.48%	>99%	81.04%	68.71%	62.10%	64.47%	70.12%	85.18%	54.44%
12 to 15 % with dose 2	63.02%	95.00%	75.68%	49.89%	45.58%	44.71%	54.36%	76.31%	36.45%

\*National population will not equal sum of listed jurisdictions due to a small number of people counted in national population residing in some 'other' territories. Sum of state doses will not add to national total as some records are unable to be geocoded to a State or Territory.  
Doses sourced from Australian Immunisation Register, population from ABS ERP June 2020

# Vaccinations by location

Cumulative total doses administered vs eligible state populations\*

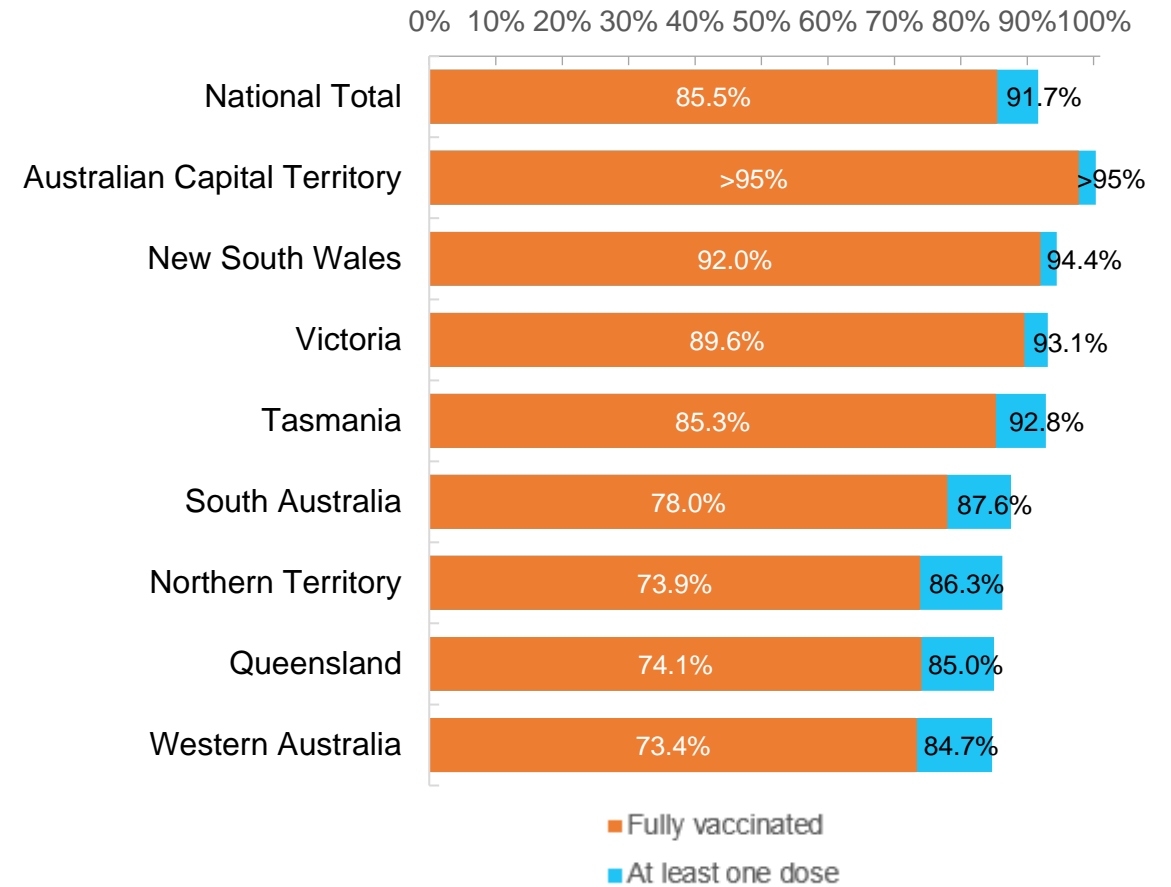


\*Not an indication of percentage vaccinated, numbers will exceed 100 due to multiple doses required per person of the population. All doses are included, including those for the 12-15 cohort, and are based on vaccination provider location.

Data as at:  
22 Nov 2021

Australia's COVID-19  
Vaccine Roadmap

First and Second Doses by state of residence



# Aboriginal and Torres Strait Islander peoples

## Number of people vaccinated

Data as at:  
16 Nov 2021  
Updated weekly

Australia's COVID-19  
Vaccine Roadmap



**367,389**

people over the age of 16  
have had at least one dose

**69.3%**

of people over the age of 16  
have had at least one dose



**306,291**

people over the age of 16  
are fully vaccinated

**57.6%**

of people over the age of 16 are  
fully vaccinated



**35,593  
(49.6%)**

people aged 12-15 years  
have had at least one dose

### 172 Aboriginal community controlled health services (ACCHS)

0#	50	26	40	12	3	21	18
<b>ACT</b>	<b>NSW</b>	<b>NT</b>	<b>QLD</b>	<b>SA</b>	<b>TAS</b>	<b>VIC</b>	<b>WA</b>

Medicare Address State <sup>##</sup>	Individuals Dose 1	Individuals Dose 1 %	Individuals Dose 2	Individuals Dose 2 %
Australian Capital Territory	4,848	89.2%	4,574	84.0%
New South Wales	135,005	84.3%	126,585	79.0%
Northern Territory	33,244	72.3%	24,396	52.8%
Queensland	86,682	60.0%	65,542	45.2%
South Australia	15,566	60.5%	12,064	46.7%
Tasmania	13,122	76.3%	11,510	66.6%
Victoria	34,740	85.9%	31,456	77.6%
Western Australia	32,058	49.9%	21,820	33.8%
Unknown/Other Territories	12,124	45.0%	8,344	30.8%
<b>Totals</b>	<b>367,389</b>	<b>69.3%</b>	<b>306,291</b>	<b>57.6%</b>

Source: Australian Immunisation Register

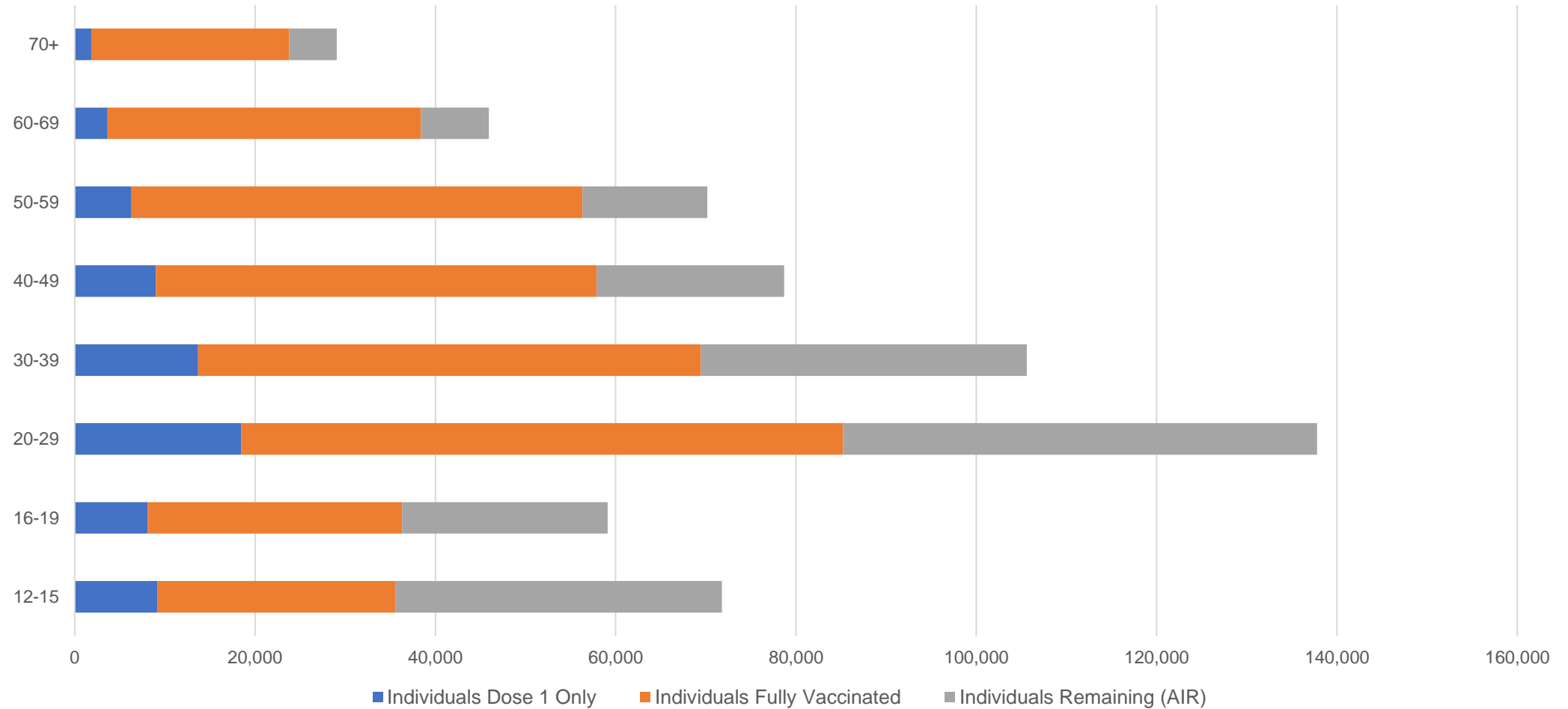
\*Identifying as Aboriginal and Torres Strait Islander is optional and the estimated population may be under reported.  
 \*\*Includes all Aboriginal and Torres Strait Islander peoples who have received a vaccination, not limited to those administered in an ACCHS setting  
 #ACCHS in the ACT are currently operating as a Commonwealth Vaccine Clinics so not included to avoid double counting  
 ##The above table includes all identified Aboriginal and Torres Strait Islander people who are aged 16 and above by their state of residence.



# Aboriginal and Torres Strait Islander peoples Number of people vaccinated by age

Data as at:  
16 Nov 2021  
Updated weekly

Australia's COVID-19  
Vaccine Roadmap



Source: Australian Immunisation Register

Data as at:  
22 Nov 2021

## Commonwealth primary care



### Primary care vaccine administration sites

<b>5,638</b>	<b>137</b>	<b>173</b>	<b>3,447</b>
GPs	CVCs	ACCHS	Pharmacies



**21,776,548** total vaccine doses administered  
primary care settings as at 22 November  
**+ 80,811** recorded in the last 24 hours

### Primary care vaccinations by provider type

	Doses administered	Daily increase	7 day increase
<b>General Practice*</b> includes other Commonwealth	19,566,359	56,216	334,881
<b>Pharmacy</b>	2,210,189	24,595	148,181

**NSW**  
**8,170,915**  
(+12,195 daily increase)

**VIC**  
**5,602,647**  
(+17,675 daily increase)

**QLD**  
**3,940,993**  
(+25,940 daily increase)

**WA**  
**1,811,098**  
(+13,285 daily increase)

**TAS**  
**362,015**  
(+1,877 daily increase)

**SA**  
**1,255,595**  
(+7,879 daily increase)

**ACT**  
**349,955**  
(+743 daily increase)

**NT**  
**132,741**  
(+909 daily increase)

**150,589** doses administered to persons residing in other territories or with missing residential information

\*General practice includes Commonwealth Vaccination Clinics, Aboriginal Community Health Centres, Royal Flying Doctor Service and other Commonwealth vaccination facilities

Source: Australian Immunisation Register

Data as at:  
22 Nov 2021

# Commonwealth aged care and disability doses administered



**1,097,467** (+ 1,472 last 24 hours)

Total vaccine doses administered in aged care and disability facilities as at 22 November

Number of doses administered as part of the Commonwealth aged and disability care rollout

**NSW**  
**517,242**  
(+206 daily increase)

**VIC**  
**203,714**  
(+16 daily increase)

**QLD**  
**166,818**  
(+851 daily increase)

**WA**  
**77,017**  
(+120 daily increase)

**TAS**  
**18,371**  
(+3 daily increase)

**SA**  
**67,978**  
(+219 daily increase)

**ACT**  
**13,949**  
(+1 daily increase)

**NT**  
**6,209**  
(+3 daily increase)

**26,169**

doses administered to persons residing in other territories or with missing residential information

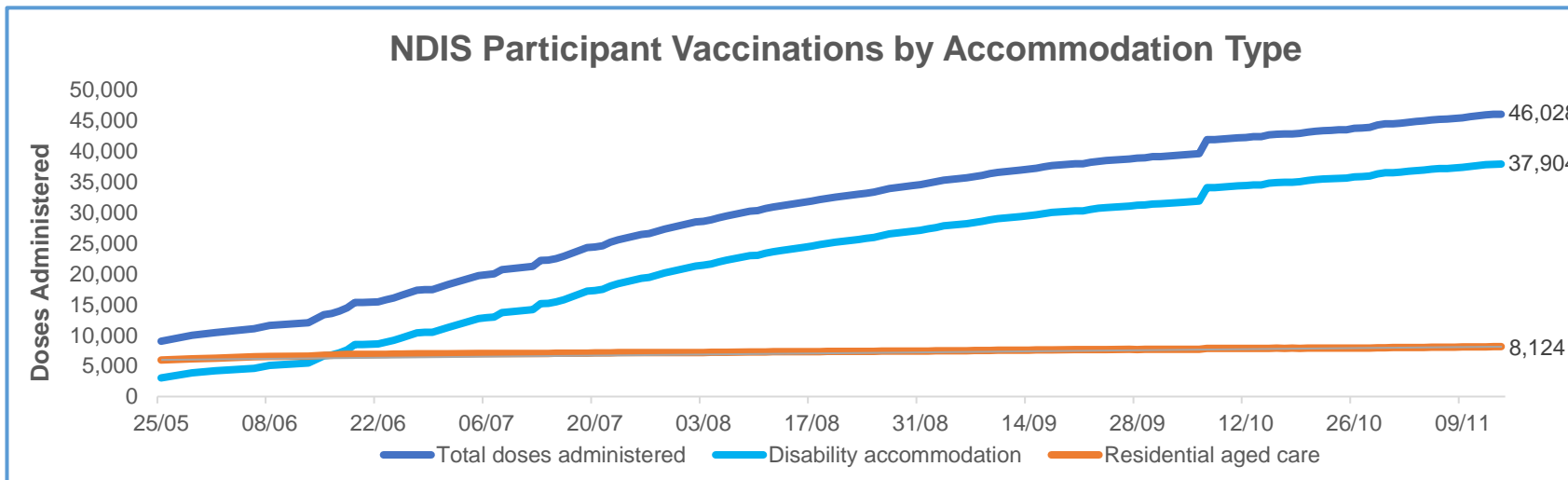
\*Sourced from the Australian Immunisation Register. Includes all persons vaccinated at participating residential aged care, disability and related industry settings.  
\*\*State level breakdown indicates the residential location and may not align to the state in which the vaccination occurred.

Source: Australian Immunisation Register

Data as at:  
15 Nov 2021\*

# Vaccination rate of people with disability and the disability workforce

## Phase 1a – People with disability living in shared accommodation



	Total people with at least one dose	People fully vaccinated	Total number of individuals in cohort	Total doses administered	% People with at least one dose	% People fully vaccinated
NDIS participants living in shared accommodation **	23,650	22,378	27,603	46,028	85.7%	81.1%
NDIS screened workers ***	207,058	194,060	242,348	401,118	85.4%	80.1%



\* Updates are available Monday to Friday on participants, and bi-weekly for workers, numbers may be up to four days old.

\*\* Shared accommodation means two or more people with disability living in shared residential accommodation and NDIS participants living in Residential Aged Care accommodation as per the eligibility criteria of Phase 1a.

\*\*\* Total number of workers within the NDIS Commission Worker Screening database who have ever been successfully screened and linked to an NDIS registered provider or participant.

Source: Linkage between National Disability Insurance Agency data, NDIS Quality and Safeguards Commission data and the Australian Immunisation Register.

## Residential aged care vaccination rollout

**Residential aged care facilities status**

**100%**

Commonwealth facilities visited (2,554 planned sites)

**161,299**

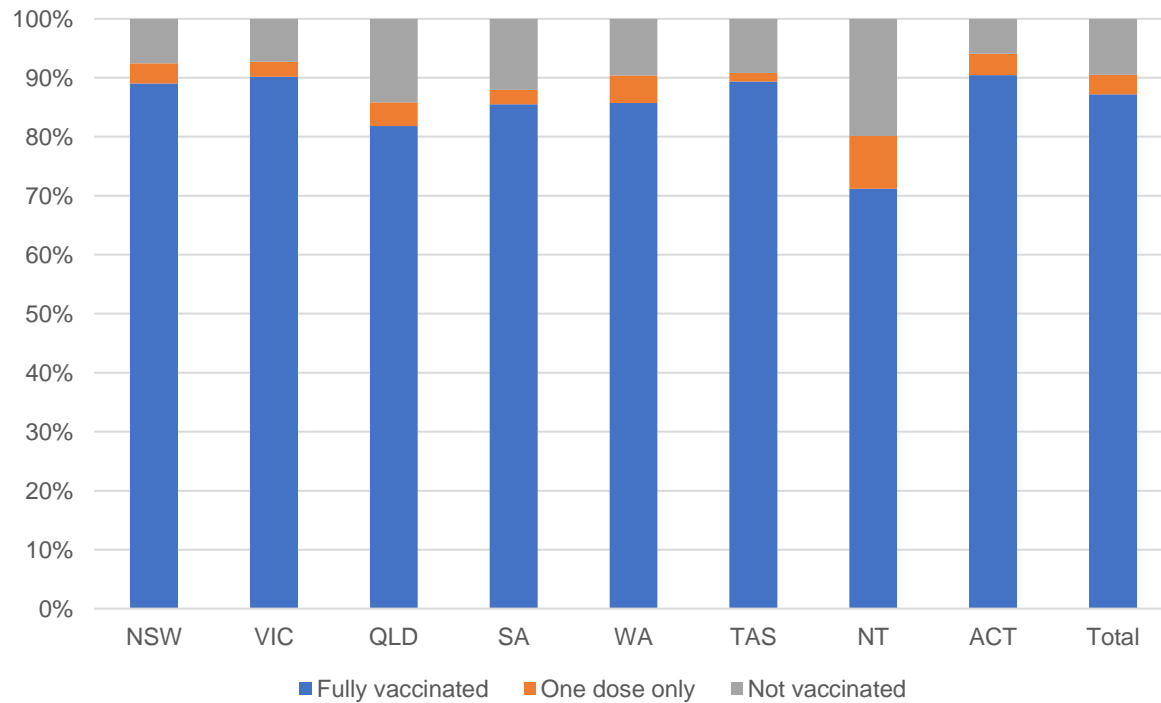
People fully vaccinated

**167,441**

People with at least one dose

Data as at:  
22 Nov 2021

### Aged care resident vaccinations



### Aged care worker vaccinations

Jurisdictions	Total workers with at least one dose	Workers fully vaccinated	% Workers with at least one dose	% Workers fully vaccinated
NSW	78,914	78,693	99.7%	99.4%
VIC	70,747	70,158	99.9%	99.1%
QLD	48,856	47,996	99.8%	98.1%
SA	27,456	26,689	100.0%	97.2%
WA	23,464	23,082	100.0%	98.3%
TAS	7,667	7,415	100.0%	96.7%
NT	839	834	100.0%	99.4%
ACT	2,961	2,933	100.0%	99.1%
<b>Total</b>	<b>260,904</b>	<b>257,800</b>	<b>99.9%</b>	<b>98.7%</b>

Source: My Aged Care Portal staff vaccination progress

\*\*Resident vaccination information is reported manually by service providers

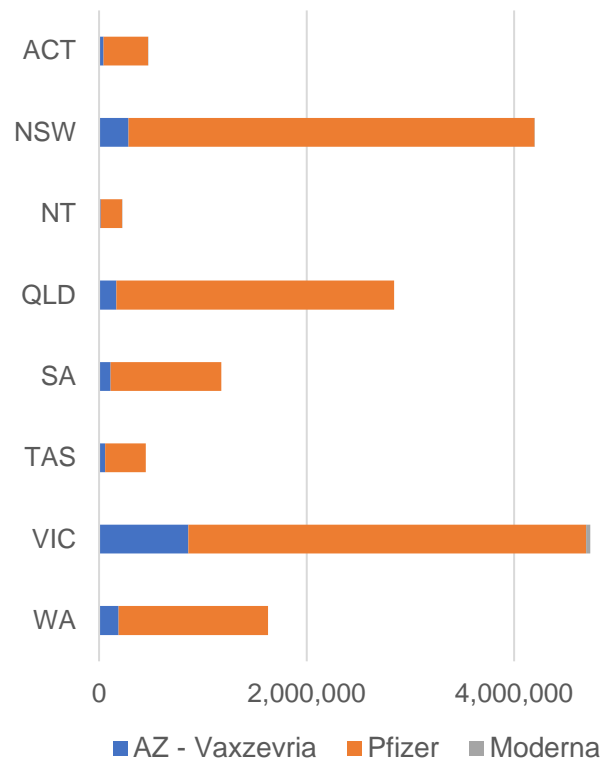
\*Status updates are provided by facilities at least once per week. Reporting is updated Monday to Friday to encompass different facility updates being made on different days.

Data is sourced directly from Aged Care Service Providers and is not drawn or closely aligned with data from AIR due to inconsistencies and potential lags in uploading of records.

Data as at:  
22 Nov 2021

# Jurisdiction administered

Total vaccine doses administered in State and Territory clinics as at 22 November



**15,723,374** total vaccine doses administered in State and Territory clinics as at 22 November  
 + **60,246** recorded in the last 24 hours  
 + **251,204** recorded in the last 7 days

**NSW**  
**4,198,676**  
 (+2,246 daily increase)

**VIC**  
**4,731,974**  
 (+14,336 daily increase)

**QLD**  
**2,841,851**  
 (+25,943 daily increase)

**WA**  
**1,627,538**  
 (+5,610 daily increase)

**TAS**  
**450,390**  
 (+1,934 daily increase)

**SA**  
**1,178,348**  
 (+7,539 daily increase)

**ACT**  
**474,947**  
 (+1,769 daily increase)

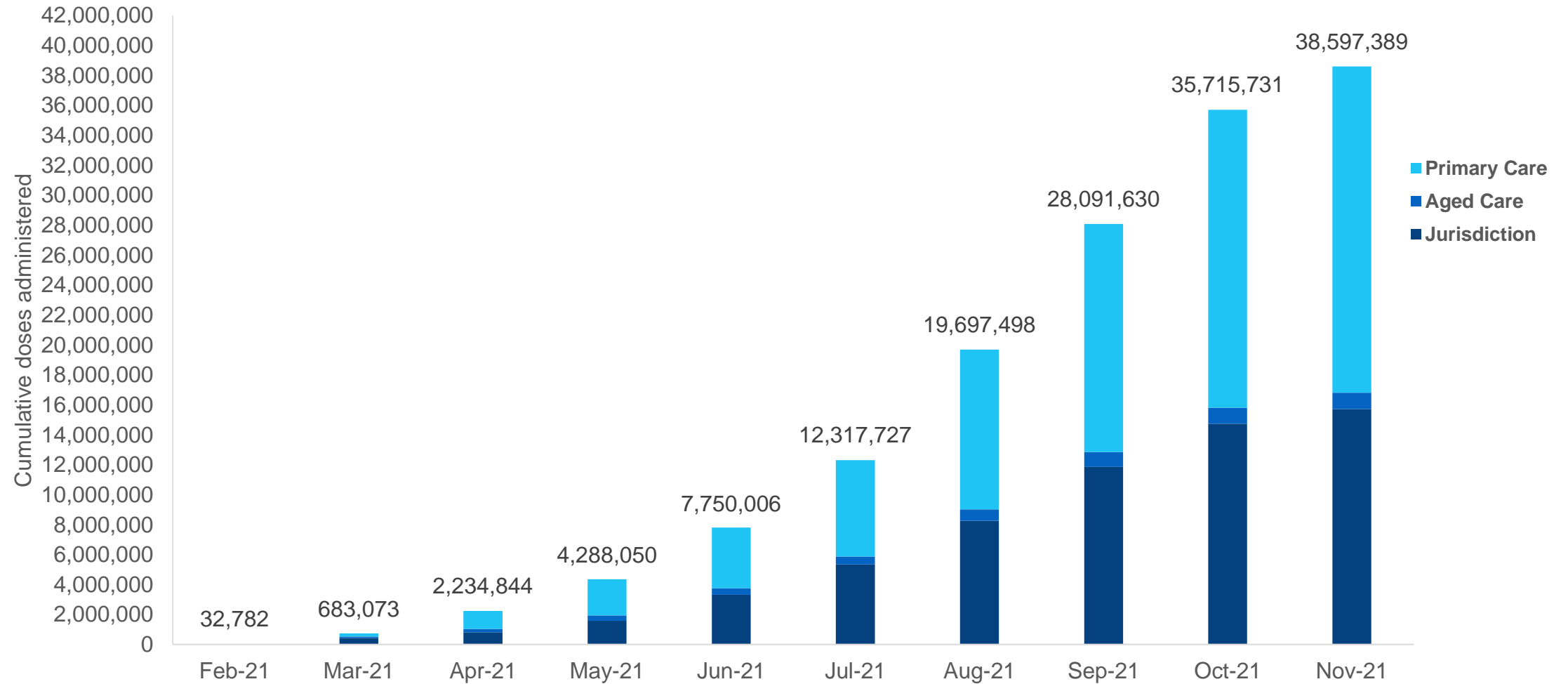
**NT**  
**219,650**  
 (+869 daily increase)

\*Sourced from the Australian Immunisation Register and self-reported data. Numbers are calculated as difference in daily cumulative reported numbers to allow for historical corrections in all self-reported data sources.

Source: Australian Immunisation Register

Data as at:  
22 Nov 2021

# Cumulative doses administered by channel



Source: Australian Immunisation Register

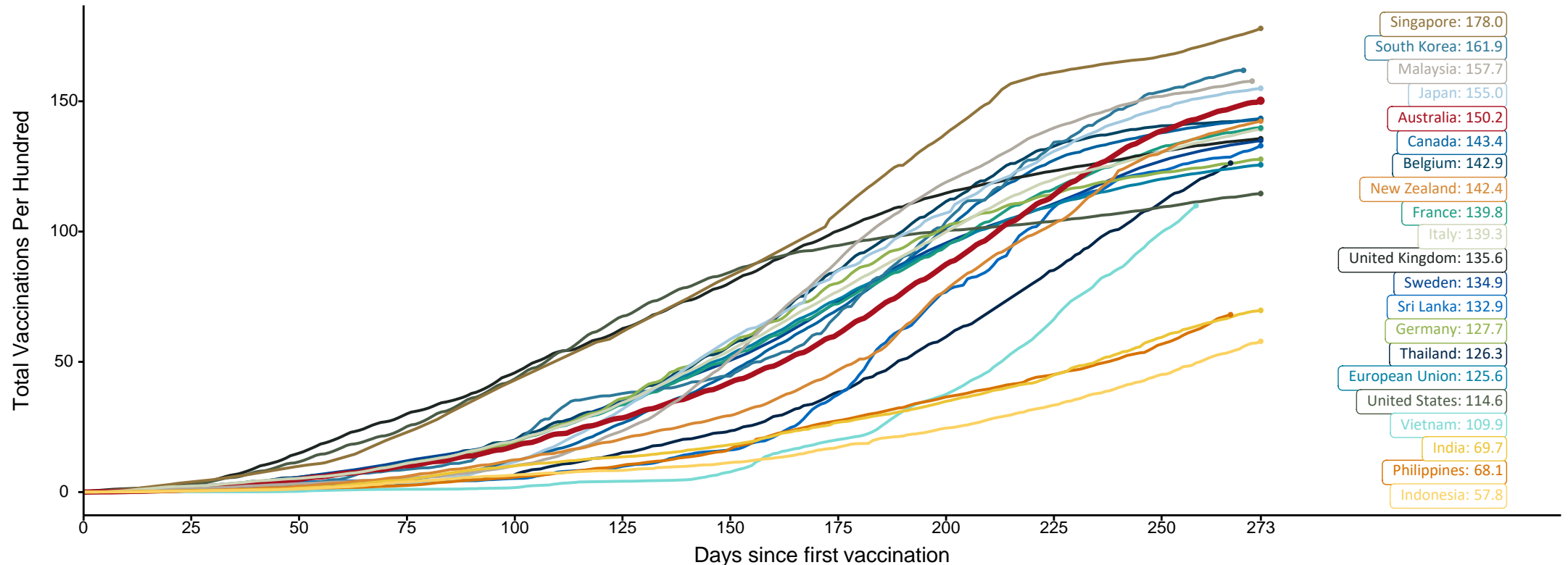


# Doses at equivalent stages of rollout (Day 273)

Data as at:  
22 Nov 2021

The x-axis is truncated at the length of Australia's vaccination program. Countries with intermittent reporting have had their doses per 100 imputed to Australia's current stage of rollout. Israel excluded as it is beyond scale of the graph

Cumulative doses administered (22 Nov): **38,597,389**



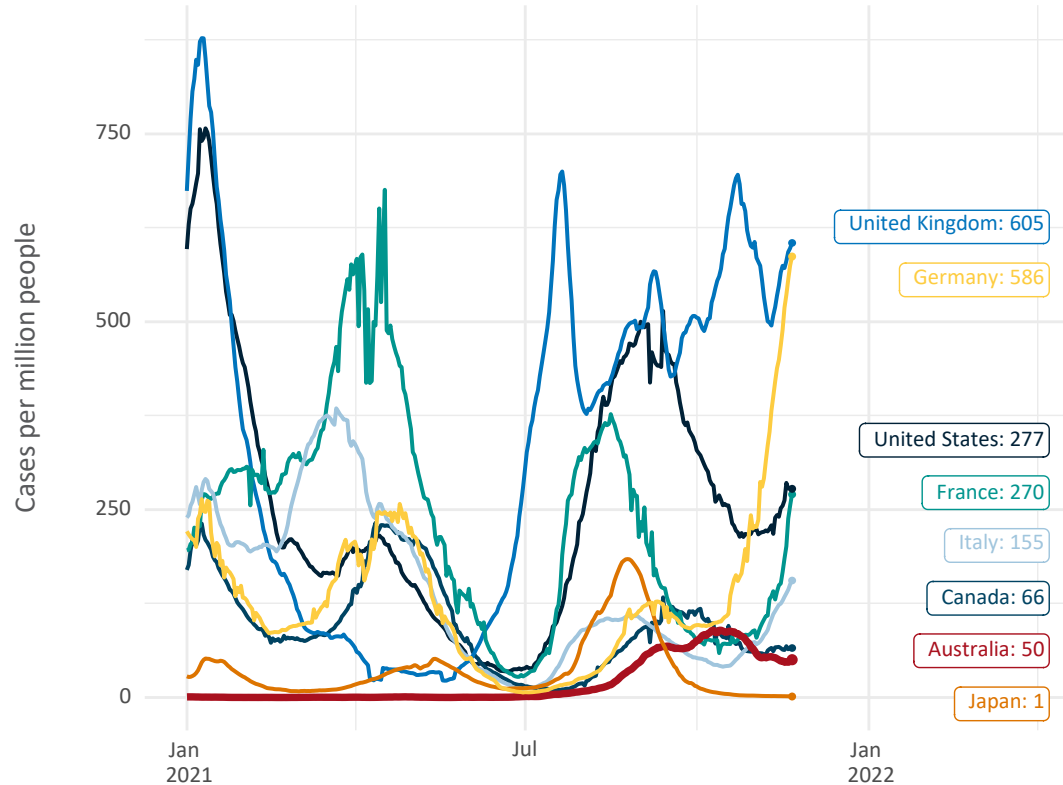
Note: From 15 September 2021, data for Australia includes all doses administered to people 12 and over. Prior to 15 September, data was for 16 and over  
 Source: Department of Health (Australia), Our World in Data (international)  
 Latest data: 22 November



Data as at:  
22 Nov 2021

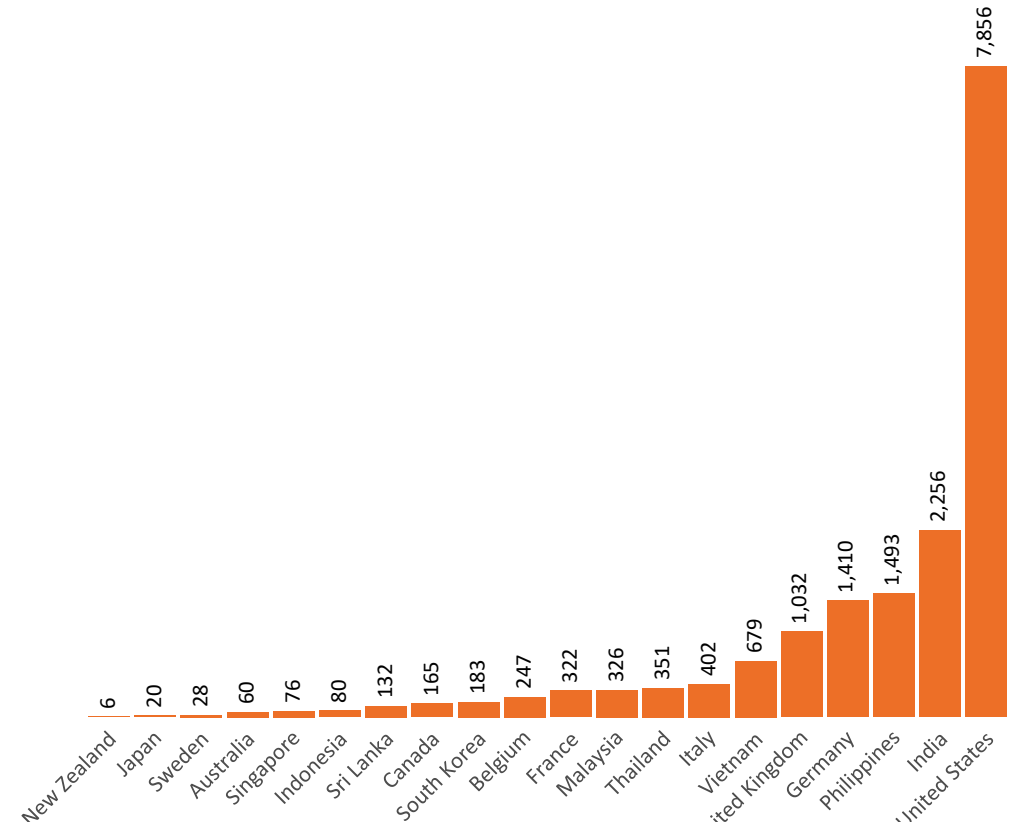
# International data – COVID-19

New daily cases per million in 2021, Australia and G7 countries  
Smoothed - 7 day average



Source: OWID  
Data downloaded: 23 Nov 2021 08:29  
Latest data: 21 Nov 2021


COVID-19 deaths in past 7 days - Australia and select countries



Source: OWID  
Data downloaded: 23 Nov 2021 08:29  
Latest data: 21 Nov 2021

Data as at midnight:  
22 Nov 2021

# Pandemic Response Payments (Current)



**2.37 million**  
People have received at least one COVID Disaster Payment (including ISP200)

**\$13.03 billion**  
Paid Out as at 22 Nov 2021


**6.06 million**  
Claims granted across three different payments



**94%**  
of Claims Received Digitally



<b>COVID Disaster Payment:</b>	5.85 million claims received - 2.19 million individuals paid a total of \$12.57 billion.
<b>\$200 Income Support Payment:</b>	350,000 claims received - 183,000 individuals paid a total of \$268.62 million.
<b>Pandemic Leave Disaster Payment:</b>	136,000 claims received - 116,000 individuals paid a total of \$190.69 million.



**THREE PAYMENTS AVAILABLE**

**COVID Disaster Payment**  
assisting during a lockdown event in a Commonwealth hotspot.

**Income Support Payment \$200**  
for income support recipients who lost at least 8 hours of work.

**Pandemic Leave Disaster Payment**  
for those who have to self-isolate, quarantine or care.

For more information visit:  
[servicesaustralia.gov.au](https://servicesaustralia.gov.au)

## CURRENT COVID-19 DISASTER PAYMENTS

**New South Wales**  
Lockdown from 24 Jun to 10 Oct  
Claiming period ends 27 Nov

**1.08m people have received at least one COVID Disaster Payment.**

**\$7.48b paid out as at 22 Nov 2021.**

**\$2m paid in initial and reoccurring payments in the week ending 21 Nov 2021.**

Cumulative payments made by State since activation on 1 Jul 2021.

Date	31 Oct	7 Nov	14 Nov	21 Nov	22 Nov
Payments	\$7.42b	\$7.47b	\$7.48b	\$7.48b	\$7.48b

**Victoria**  
Lockdown (#6) since 6 Aug to 28 Oct  
Claiming period ends 9 Dec

**744,000 people have received at least one COVID Disaster Payment.**

**\$4.44b paid out as at 22 Nov 2021.**

**\$46m paid in initial and reoccurring payments in the week ending 21 Nov 2021.**

Cumulative payments made by State since activation on 8 Jun 2021.

Date	31 Oct	7 Nov	14 Nov	21 Nov	22 Nov
Payments	\$4.19b	\$4.31b	\$4.39b	\$4.44b	\$4.44b

**Australian Capital Territory**  
Lockdown since 12 Aug to 14 Oct  
Claiming period ends 25 Nov

**65,000 people have received at least one COVID Disaster Payment.**

**\$344.7m paid out as at 22 Nov 2021.**

**\$162,000 paid in initial and reoccurring payments in the week ending 21 Nov 2021.**

Cumulative payments made by State since activation on 20 Aug 2021.

Date	31 Oct	7 Nov	14 Nov	21 Nov	22 Nov
Payments	\$338.6m	\$343.4m	\$344.5m	\$344.7m	\$344.7m

**Northern Territory**  
Lockdown (#2) from 5 Nov to 7 Nov  
Claiming period ends 2 Dec

**6,200 people have received at least one COVID Disaster Payment.**

**\$4.1m paid out as at 22 Nov 2021.**

**\$257,000 paid in initial payments in the week ending 21 Nov 2021.**

Cumulative payments made by State since activation on 25 Aug 2021.

Date	31 Oct	7 Nov	14 Nov	21 Nov	22 Nov
Payments	\$3.8m	\$3.8m	\$3.9m	\$4.1m	\$4.1m

Data as at midnight:  
22 Nov 2021

# Pandemic Response Payments (Closed Events)

## CLOSED COVID-19 DISASTER PAYMENTS

### Tasmania

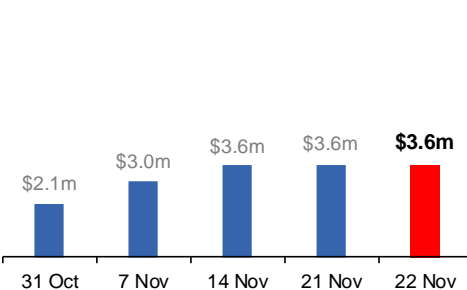
Lockdown from 15 Oct to 18 Oct  
Claiming period ended 12 Nov

**6,900 people have received at least one COVID Disaster Payment.**

**\$3.6m paid out as at 22 Nov 2021.**

**\$27,000 paid in initial payments in the week ending 21 Nov 2021.**

Cumulative payments made by State since activation on 22 Oct 2021.



### Queensland

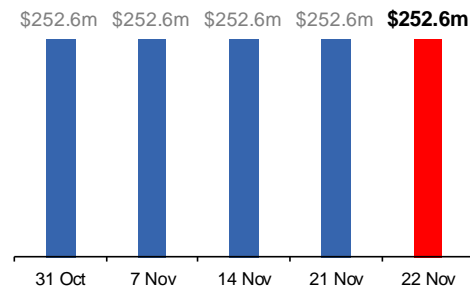
Lockdown from 31 Jul to 11 Aug  
Claiming period ended 28 Aug

**196,000 people have received at least one COVID Disaster Payment.**

**\$252.6m paid out as at 22 Nov 2021.**

**\$9,000 paid in initial and reoccurring payments in the week ending 21 Nov 2021.**

Cumulative payments made by State since activation on 7 Aug 2021.



### South Australia

Lockdown from 21 to 27 Jul  
Claiming period ended 17 Aug

**86,000 people have received at least one COVID Disaster Payment.**

**\$48.2m paid out as at 22 Nov 2021.**

**Nil payments made in the week ending 21 Nov 2021.**

Cumulative payments made by State since activation on 28 Jul 2021.

