



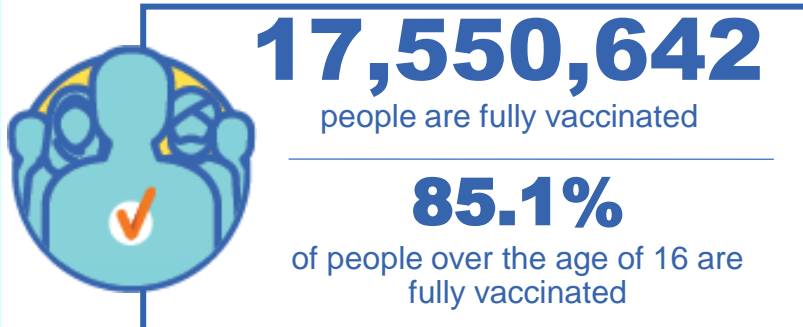
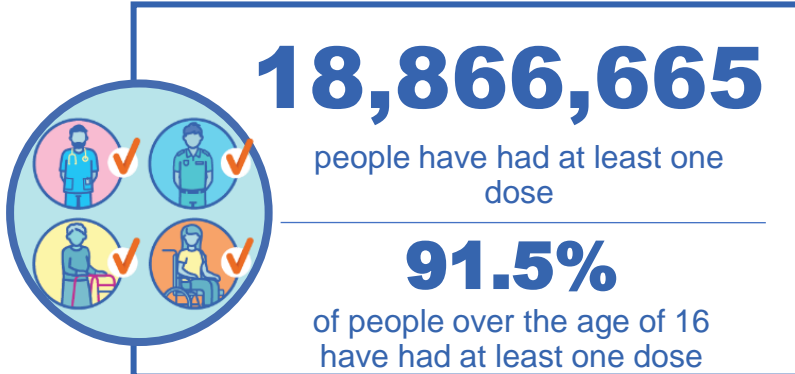
**Australian Government**  
**Operation COVID Shield**

# COVID-19 Vaccine Roll-out

22 November 2021

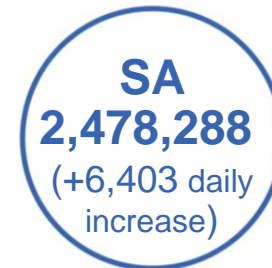
Data as at:  
21 Nov 2021

## Total vaccine doses



**38,454,860** total vaccine doses administered nationally as at 21 November

**+23,360** recorded in the last 24 hours



\*Administration state breakdown indicates state in which a vaccine was administered

\*\*Overall dose count includes instances of more than two doses per person in a small number of cases.

Data as at:  
21 Nov 2021

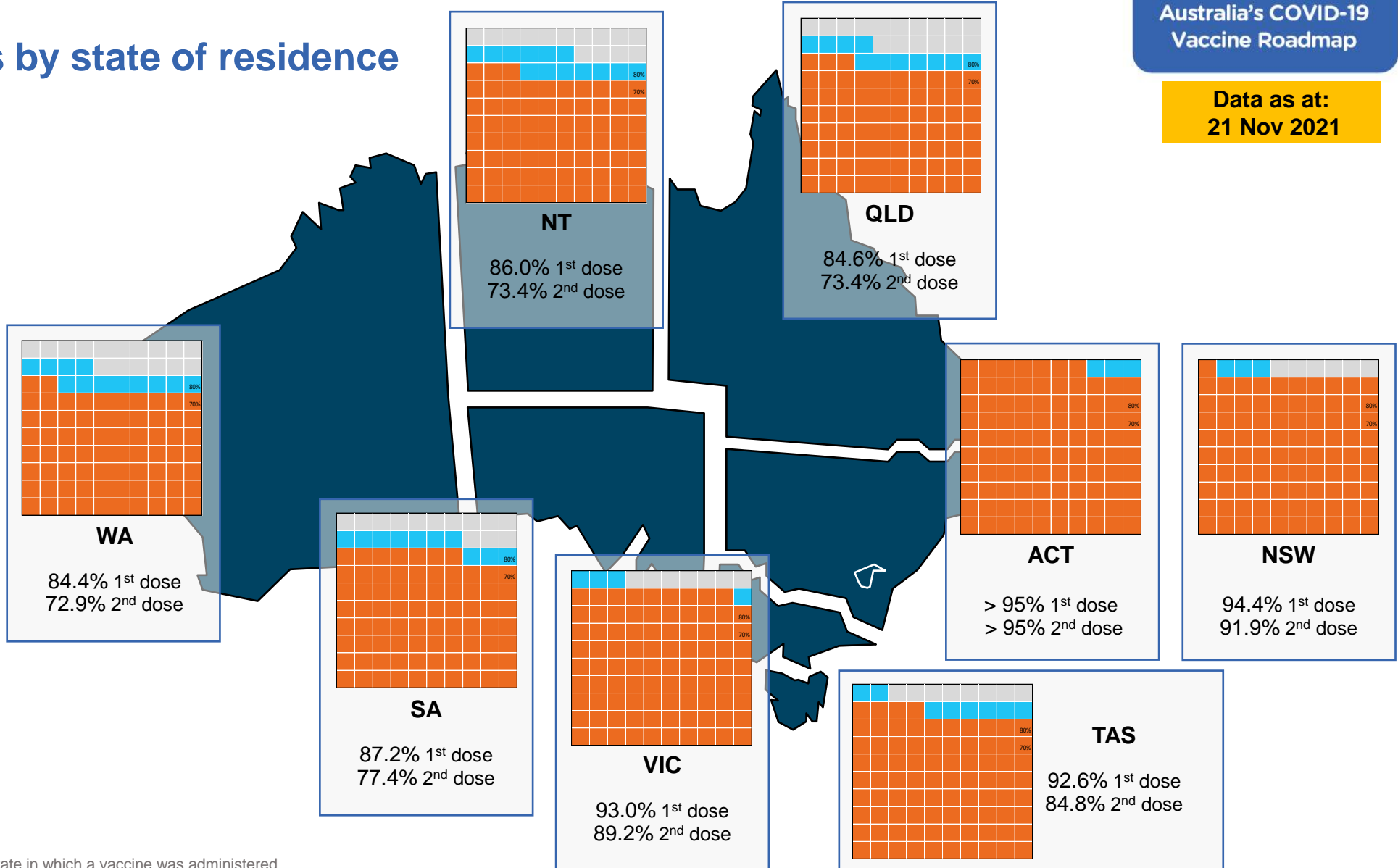
# Vaccinations by state of residence

## First doses

Age	Today	4 weeks ago	8 weeks ago
16+	91.5%	87.2%	77.1%
50+	>95%	94.7%	89.1%
70+	>95%	>95%	>95%

## Fully vaccinated

Age	Today	4 weeks ago	8 weeks ago
16+	85.1%	74.1%	52.8%
50+	92.2%	83.9%	70.8%
70+	>95%	88.9%	78.9%



\*Residential state may differ from the state in which a vaccine was administered

## Commonwealth and Jurisdiction vaccine doses administered

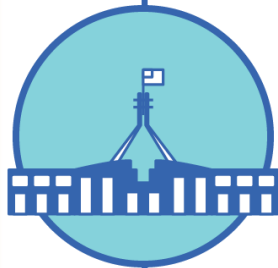
Data as at:  
21 Nov 2021



**38,454,860** total vaccine doses administered nationally as at 21 November  
+ **23,360** recorded in the last 24 hours



**15,663,128** doses administered by state and territory facilities  
+ **9,227** recorded in the last 24 hours



**22,791,732** doses administered by commonwealth facilities  
+ **14,133** recorded in the last 24 hours

**21,695,737** total vaccine doses administered in primary care settings  
**1,095,995** total vaccine doses administered in aged care and disability settings

NSW	Jurisdictions	Commonwealth
Cumulative	4,196,430	8,647,725
Daily increase	315	1,294

VIC	Jurisdictions	Commonwealth
Cumulative	4,717,638	5,825,040
Daily increase	-20 <sup>#</sup>	2,661

QLD	Jurisdictions	Commonwealth
Cumulative	2,815,908	4,135,864
Daily increase	118	5,838

WA	Jurisdictions	Commonwealth
Cumulative	1,621,928	1,884,036
Daily increase	3,162	2,786

TAS	Jurisdictions	Commonwealth
Cumulative	448,456	372,026
Daily increase	4	121

SA	Jurisdictions	Commonwealth
Cumulative	1,170,809	1,307,479
Daily increase	5,124	1,279

ACT	Jurisdictions	Commonwealth
Cumulative	473,178	470,442
Daily increase	197	150

NT	Jurisdictions	Commonwealth
Cumulative	218,781	149,120
Daily increase	327	4

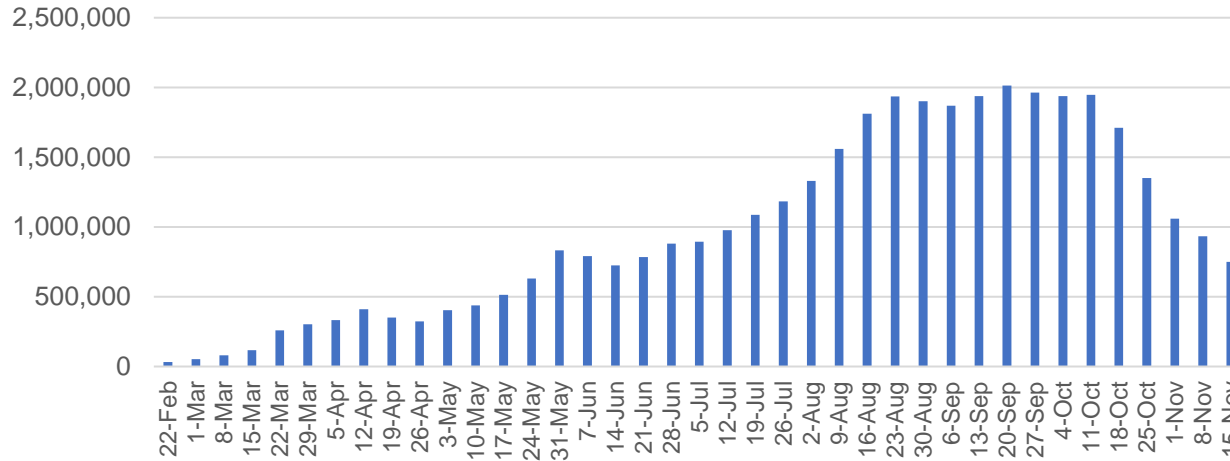
<sup>#</sup> Numbers are calculated as difference in daily cumulative reported numbers to allow for historical corrections in all data sources. This can occasionally result in negative numbers, such as for VIC, where historical details about doses have been updated.

# Vaccine milestone charts

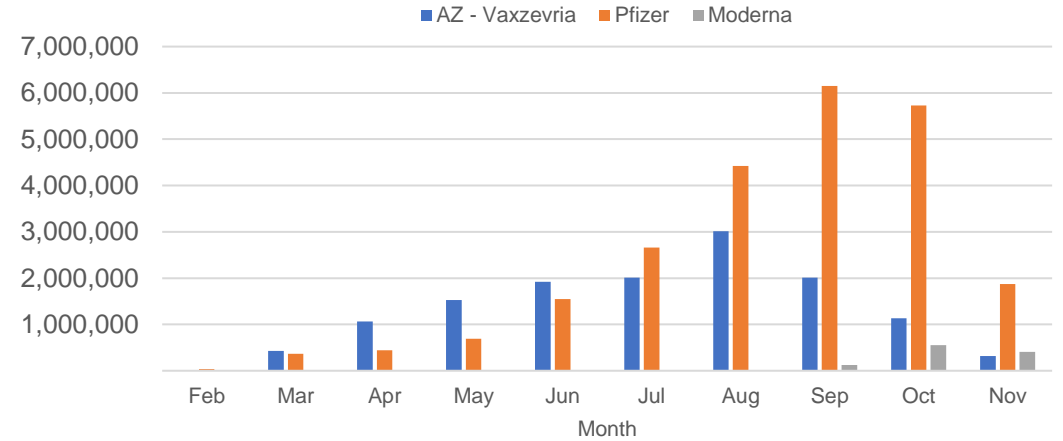
Data as at:  
21 Nov 2021

Australia's COVID-19  
Vaccine Roadmap

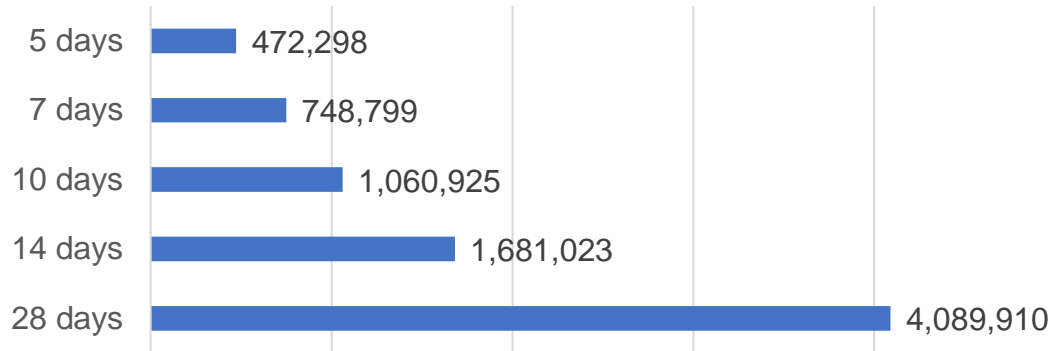
Doses Administered by Week



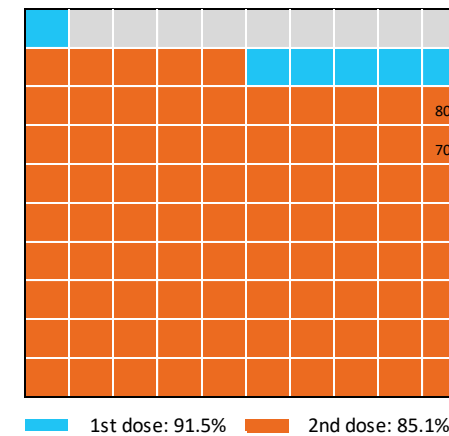
Doses by administration month and vaccine type



Doses Reported



Eligible population percentage coverage



\*Sourced from the Australian Immunisation Register.

\*Each square represents 1% of the national population. Squares are filled as milestones are achieved.

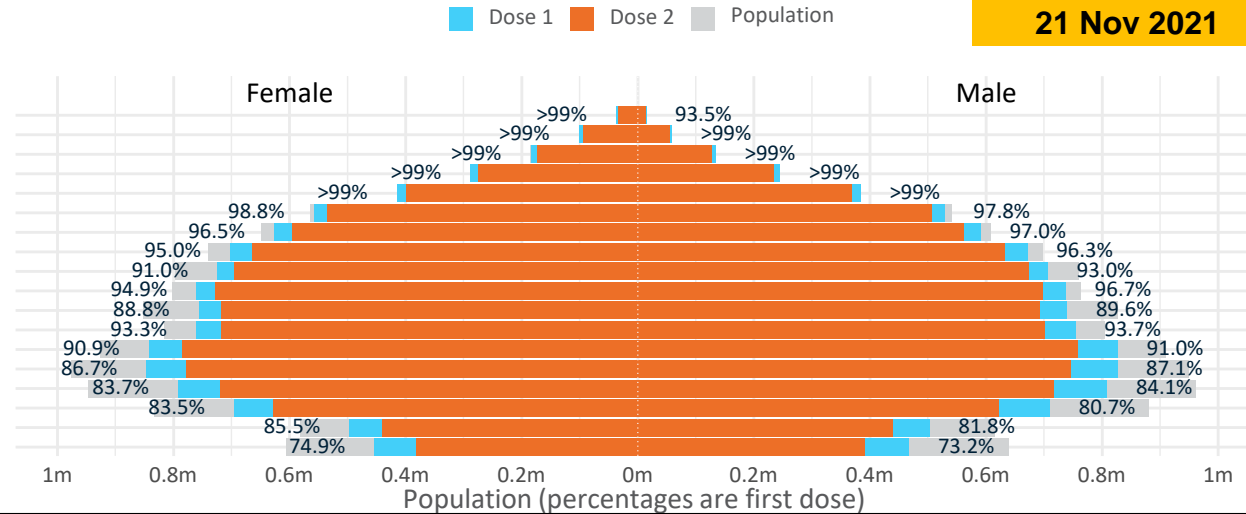
# Doses by age and sex

First and second doses by age and sex

Data as at:  
21 Nov 2021

	16+	50+	70+	12-15
Dose 1	91.50% (18,866,665 doses / 20,619,959 people)	96.88% (8,476,927 doses / 8,749,703 people)	>99% (2,951,807 doses / 2,934,706 people)	74.02% (920,840 doses / 1,243,990 people)
Dose 2	85.11% (17,550,642 doses / 20,619,959 people)	92.17% (8,064,682 doses / 8,749,703 people)	95.89% (2,814,082 doses / 2,934,706 people)	62.10% (772,539 doses / 1,243,990 people)

Age	Dose 1	Dose 2
95+	51,942 (98.2%)	47,016 (88.9%)
90-94	160,349 (>99%)	148,800 (93.9%)
85-89	318,955 (>99%)	300,225 (94.9%)
80-84	533,552 (>99%)	508,523 (96.2%)
75-79	799,316 (>99%)	767,181 (>99%)
70-74	1,087,693 (98.4%)	1,042,337 (94.3%)
65-69	1,218,570 (96.9%)	1,158,027 (92.0%)
60-64	1,375,172 (95.7%)	1,297,733 (90.3%)
55-59	1,431,978 (92.1%)	1,370,165 (88.1%)
50-54	1,499,400 (95.8%)	1,424,675 (91.1%)
45-49	1,497,072 (89.3%)	1,412,801 (84.3%)
40-44	1,517,138 (93.6%)	1,420,515 (87.7%)
35-39	1,673,965 (91.2%)	1,545,927 (84.2%)
30-34	1,679,791 (87.3%)	1,528,179 (79.4%)
25-29	1,610,192 (84.5%)	1,443,721 (75.7%)
20-24	1,411,607 (82.4%)	1,254,780 (73.3%)
16-19	999,973 (83.6%)	880,037 (73.6%)
12-15	920,840 (74.0%)	772,539 (62.1%)

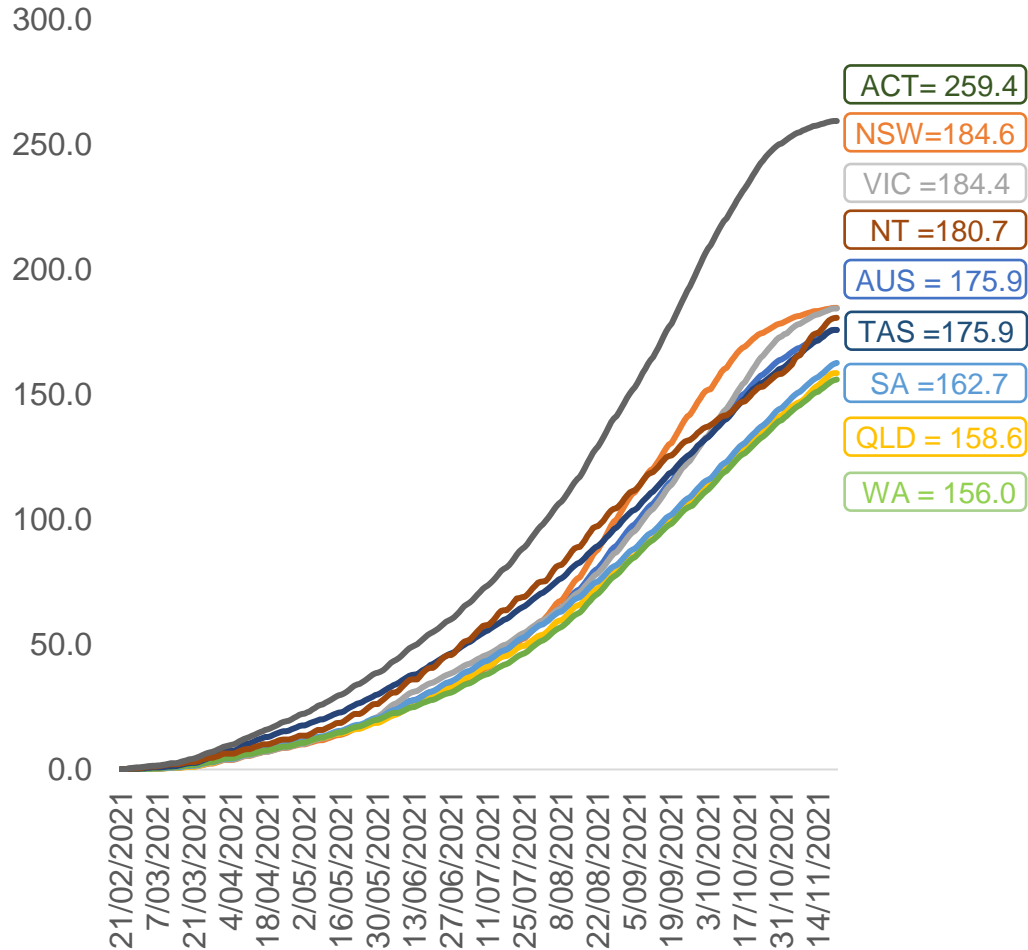


	AUS	ACT	NSW	NT	QLD	SA	TAS	VIC	WA
16 and over - dose 1	18,866,665	344,889	6,196,798	163,886	3,479,403	1,256,034	407,574	5,029,328	1,785,403
16 and over - dose 2	17,550,642	335,682	6,030,962	139,923	3,019,359	1,115,452	373,468	4,825,895	1,541,593
16 and over - population	20,619,959*	344,037	6,565,651	190,571	4,112,707	1,440,400	440,172	5,407,574	2,114,978
16 and over % with dose 1	91.50%	>99%	94.38%	86.00%	84.60%	87.20%	92.59%	93.01%	84.42%
16 and over % with dose 2	85.11%	97.57%	91.86%	73.42%	73.42%	77.44%	84.85%	89.24%	72.89%
50 and over - dose 1	8,476,927	133,492	2,762,683	55,417	1,637,455	634,306	210,478	2,162,625	824,135
50 and over - dose 2	8,064,682	130,552	2,703,291	50,589	1,511,938	583,448	196,843	2,089,602	750,131
50 and over - population	8,749,703	127,802	2,807,793	62,280	1,758,855	674,384	220,036	2,211,211	885,370
50 and over % with dose 1	96.88%	>99%	98.39%	88.98%	93.10%	94.06%	95.66%	97.80%	93.08%
50 and over % with dose 2	92.17%	>99%	96.28%	81.23%	85.96%	86.52%	89.46%	94.50%	84.73%
70 and over - dose 1	2,951,807	43,486	975,253	11,349	565,961	237,916	77,386	744,863	274,066
70 and over - dose 2	2,814,082	42,345	950,787	10,517	530,588	219,951	72,236	716,886	252,100
70 and over - population	2,934,706	39,946	962,606	12,343	577,767	240,514	77,155	743,519	280,281
70 and over % with dose 1	>99%	>99%	>99%	91.95%	97.96%	98.92%	>99%	>99%	97.78%
70 and over % with dose 2	95.89%	>99%	98.77%	85.21%	91.83%	91.45%	93.62%	96.42%	89.95%
12 to 15 - dose 1	920,840	19,616	316,029	8,892	165,559	52,766	18,262	261,040	71,801
12 to 15 - dose 2	772,539	18,647	294,379	6,433	118,885	36,230	13,863	231,915	47,299
12 to 15 - population	1,243,990	19,693	390,330	13,060	270,146	82,747	26,308	308,611	132,869
12 to 15 % with dose 1	74.02%	>99%	80.96%	68.09%	61.29%	63.77%	69.42%	84.59%	54.04%
12 to 15 % with dose 2	62.10%	94.69%	75.42%	49.26%	44.01%	43.78%	52.69%	75.15%	35.60%

\*National population will not equal sum of listed jurisdictions due to a small number of people counted in national population residing in some 'other' territories. Sum of state doses will not add to national total as some records are unable to be geocoded to a State or Territory.  
Doses sourced from Australian Immunisation Register, population from ABS ERP June 2020

# Vaccinations by location

Cumulative total doses administered vs eligible state populations\*

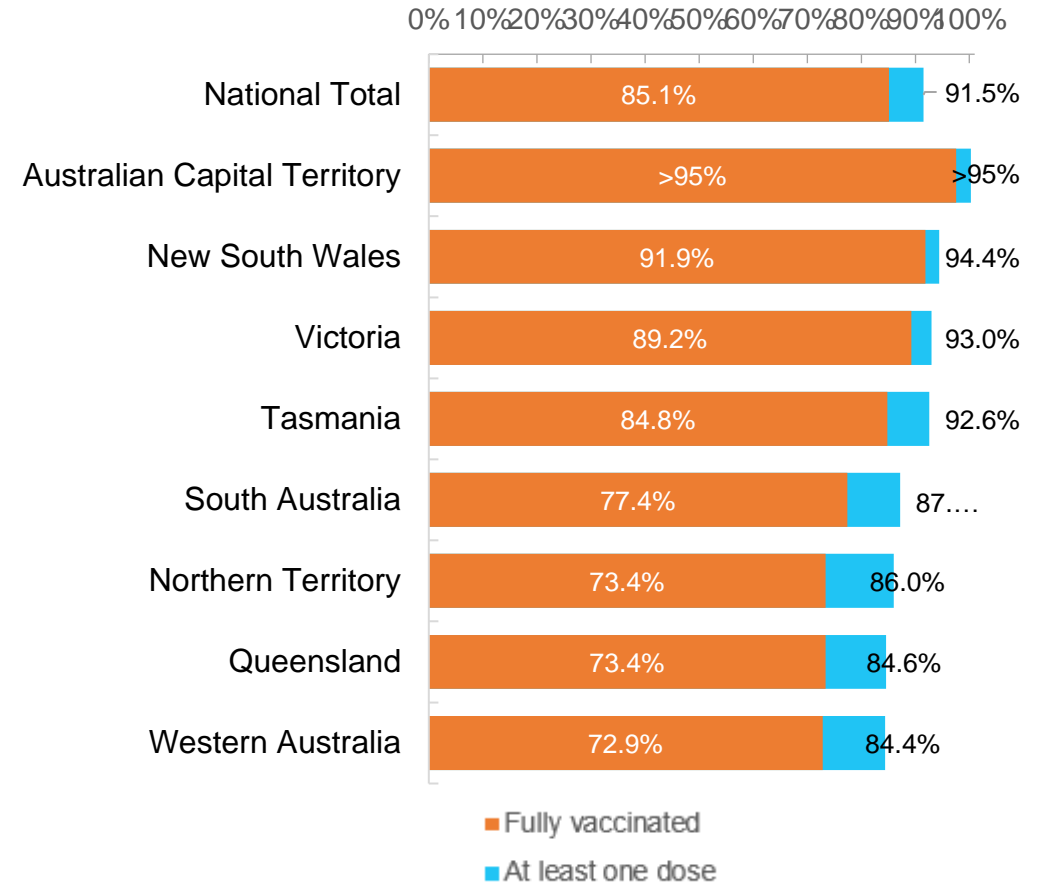


\*Not an indication of percentage vaccinated, numbers will exceed 100 due to multiple doses required per person of the population. All doses are included, including those for the 12-15 cohort, and are based on vaccination provider location.

Data as at:  
21 Nov 2021

Australia's COVID-19  
Vaccine Roadmap

First and Second Doses by state of residence



# Aboriginal and Torres Strait Islander peoples

## Number of people vaccinated

Data as at:  
16 Nov 2021  
Updated weekly

Australia's COVID-19  
Vaccine Roadmap



**367,389**

people over the age of 16  
have had at least one dose

**69.3%**

of people over the age of 16  
have had at least one dose



**306,291**

people over the age of 16  
are fully vaccinated

**57.6%**

of people over the age of 16 are  
fully vaccinated



**35,593  
(49.6%)**

people aged 12-15 years  
have had at least one dose

### 172 Aboriginal community controlled health services (ACCHS)

0#	50	26	40	12	3	21	18
<b>ACT</b>	<b>NSW</b>	<b>NT</b>	<b>QLD</b>	<b>SA</b>	<b>TAS</b>	<b>VIC</b>	<b>WA</b>

Medicare Address State <sup>##</sup>	Individuals Dose 1	Individuals Dose 1 %	Individuals Dose 2	Individuals Dose 2 %
Australian Capital Territory	4,848	89.2%	4,574	84.0%
New South Wales	135,005	84.3%	126,585	79.0%
Northern Territory	33,244	72.3%	24,396	52.8%
Queensland	86,682	60.0%	65,542	45.2%
South Australia	15,566	60.5%	12,064	46.7%
Tasmania	13,122	76.3%	11,510	66.6%
Victoria	34,740	85.9%	31,456	77.6%
Western Australia	32,058	49.9%	21,820	33.8%
Unknown/Other Territories	12,124	45.0%	8,344	30.8%
<b>Totals</b>	<b>367,389</b>	<b>69.3%</b>	<b>306,291</b>	<b>57.6%</b>

Source: Australian Immunisation Register

\*Identifying as Aboriginal and Torres Strait Islander is optional and the estimated population may be under reported.

\*\*Includes all Aboriginal and Torres Strait Islander peoples who have received a vaccination, not limited to those administered in an ACCHS setting

#ACCHS in the ACT are currently operating as a Commonwealth Vaccine Clinics so not included to avoid double counting

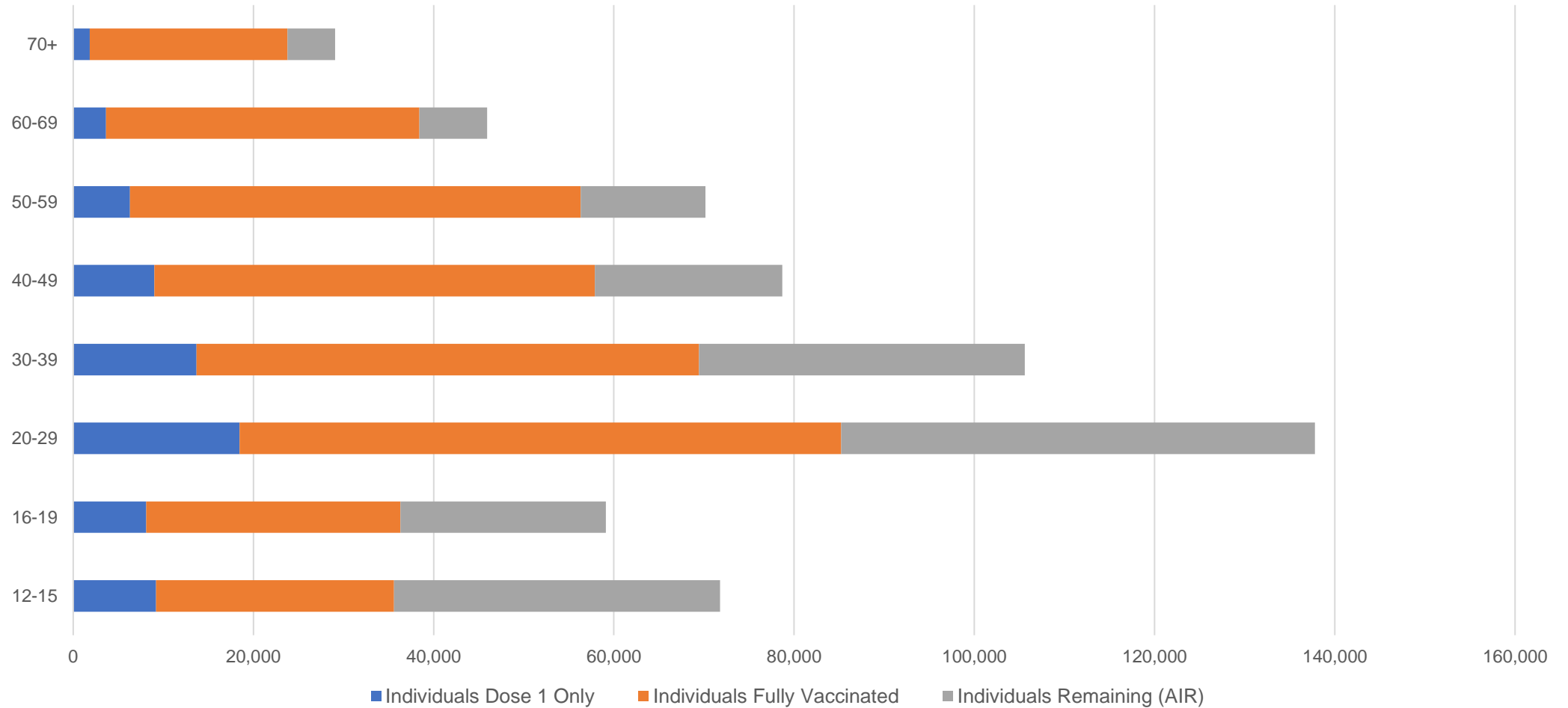
##The above table includes all identified Aboriginal and Torres Strait Islander people who are aged 16 and above by their state of residence.



# Aboriginal and Torres Strait Islander peoples Number of people vaccinated by age

Data as at:  
16 Nov 2021  
Updated weekly

Australia's COVID-19  
Vaccine Roadmap



Source: Australian Immunisation Register

Data as at:  
21 Nov 2021

## Commonwealth primary care



### Primary care vaccine administration sites

<b>5,638</b>	<b>137</b>	<b>173</b>	<b>3,447</b>
GPs	CVCs	ACCHS	Pharmacies



**21,695,737** total vaccine doses administered  
primary care settings as at 21 November  
**+ 13,305** recorded in the last 24 hours

### Primary care vaccinations by provider type

	Doses administered	Daily increase	7 day increase
<b>General Practice*</b> includes other Commonwealth	19,510,143	9,445	344,218
<b>Pharmacy</b>	2,185,594	3,860	152,416



**150,281** doses administered to persons residing in other territories or with missing residential information

\*General practice includes Commonwealth Vaccination Clinics, Aboriginal Community Health Centres, Royal Flying Doctor Service and other Commonwealth vaccination facilities

Source: Australian Immunisation Register

Data as at:  
21 Nov 2021

# Commonwealth aged care and disability doses administered



**1,095,995** (+ 828 last 24 hours)

Total vaccine doses administered in aged care and disability facilities as at 21 November

Number of doses administered as part of the Commonwealth aged and disability care rollout

**NSW**  
**517,036**  
(+49 daily increase)

**VIC**  
**203,698**  
(+115 daily increase)

**QLD**  
**165,967**  
(+440 daily increase)

**WA**  
**76,897**  
(+69 daily increase)

**TAS**  
**18,368**  
(+22 daily increase)

**SA**  
**67,759**  
(+43 daily increase)

**ACT**  
**13,948**  
(+66 daily increase)

**NT**  
**6,206**  
(+1 daily increase)

**26,116**

doses administered to persons residing in other territories or with missing residential information

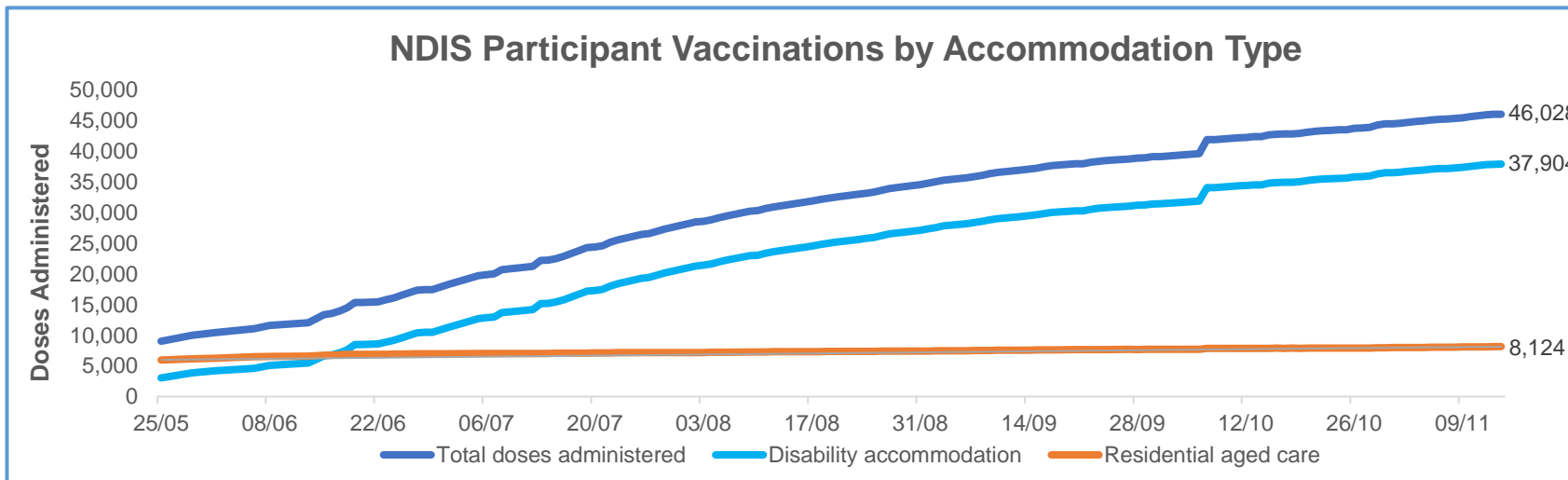
\*Sourced from the Australian Immunisation Register. Includes all persons vaccinated at participating residential aged care, disability and related industry settings.  
\*\*State level breakdown indicates the residential location and may not align to the state in which the vaccination occurred.

Source: Australian Immunisation Register

Data as at:  
15 Nov 2021\*

# Vaccination rate of people with disability and the disability workforce

## Phase 1a – People with disability living in shared accommodation



	Total people with at least one dose	People fully vaccinated	Total number of individuals in cohort	Total doses administered	% People with at least one dose	% People fully vaccinated
NDIS participants living in shared accommodation **	23,650	22,378	27,603	46,028	85.7%	81.1%
NDIS screened workers ***	207,058	194,060	242,348	401,118	85.4%	80.1%



\* Updates are available Monday to Friday on participants, and bi-weekly for workers, numbers may be up to four days old.

\*\* Shared accommodation means two or more people with disability living in shared residential accommodation and NDIS participants living in Residential Aged Care accommodation as per the eligibility criteria of Phase 1a.

\*\*\* Total number of workers within the NDIS Commission Worker Screening database who have ever been successfully screened and linked to an NDIS registered provider or participant.

Source: Linkage between National Disability Insurance Agency data, NDIS Quality and Safeguards Commission data and the Australian Immunisation Register.

## Residential aged care vaccination rollout

**Residential aged care facilities status**

**100%**

Commonwealth facilities visited (2,554 planned sites)

**161,512**

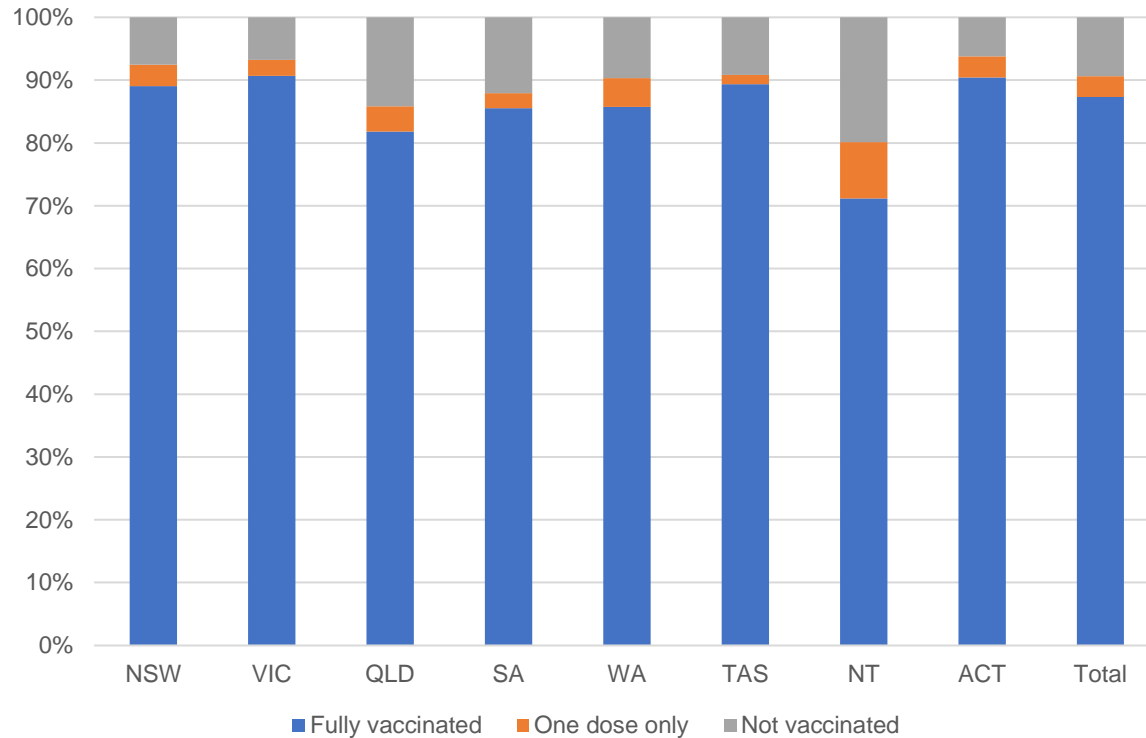
People fully vaccinated

**167,658**

People with at least one dose

**Data as at: 21 Nov 2021**

### Aged care resident vaccinations



### Aged care worker vaccinations

Jurisdictions	Total workers with at least one dose	Workers fully vaccinated	% Workers with at least one dose	% Workers fully vaccinated
NSW	78,897	78,599	99.7%	99.3%
VIC	70,739	70,009	99.8%	98.8%
QLD	48,813	47,706	99.8%	97.6%
SA	27,455	26,682	100.0%	97.2%
WA	23,463	22,935	100.0%	97.7%
TAS	7,665	7,413	100.0%	96.7%
NT	820	817	99.5%	99.2%
ACT	2,961	2,933	100.0%	99.1%
<b>Total</b>	<b>260,813</b>	<b>257,094</b>	<b>99.8%</b>	<b>98.4%</b>

Source: My Aged Care Portal staff vaccination progress

\*\*Resident vaccination information is reported manually by service providers

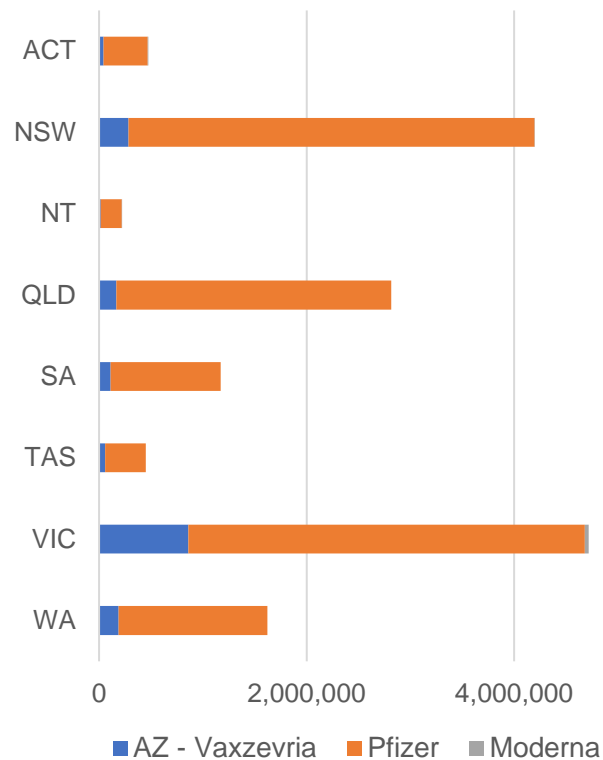
\*Status updates are provided by facilities at least once per week. Reporting is updated Monday to Friday to encompass different facility updates being made on different days.

Data is sourced directly from Aged Care Service Providers and is not drawn or closely aligned with data from AIR due to inconsistencies and potential lags in uploading of records.

Data as at:  
21 Nov 2021

# Jurisdiction administered

Total vaccine doses administered in State and Territory clinics as at 21 November



**15,663,128** total vaccine doses administered in State and Territory clinics as at 21 November  
 + **9,227** recorded in the last 24 hours  
 + **234,568** recorded in the last 7 days

**NSW**  
**4,196,430**  
 (+315 daily increase)

**VIC**  
**4,717,638**  
 (-20# daily increase)

**QLD**  
**2,815,908**  
 (+118 daily increase)

**WA**  
**1,621,928**  
 (+3,162 daily increase)

**TAS**  
**448,456**  
 (+4 daily increase)

**SA**  
**1,170,809**  
 (+5,124 daily increase)

**ACT**  
**473,178**  
 (+197 daily increase)

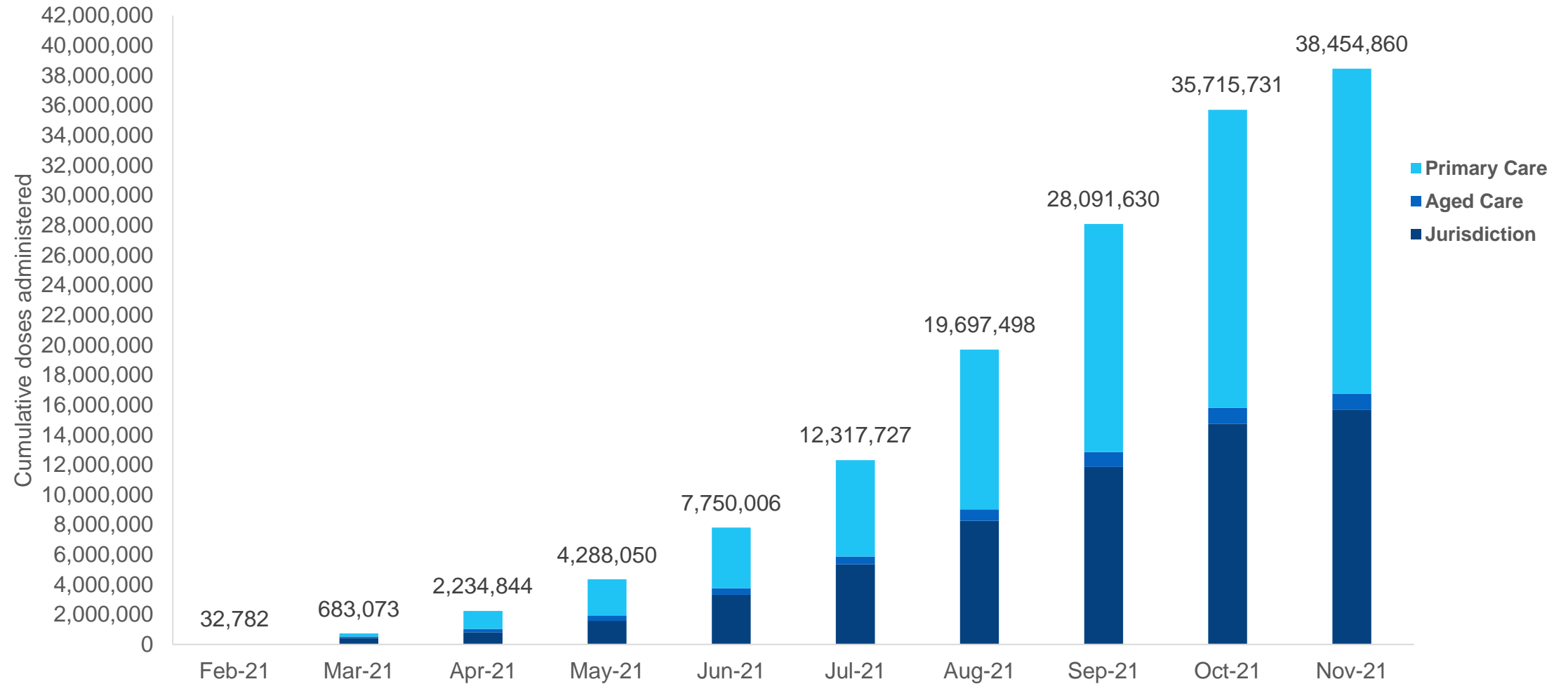
**NT**  
**218,781**  
 (+327 daily increase)

\*Sourced from the Australian Immunisation Register and self-reported data. Numbers are calculated as difference in daily cumulative reported numbers to allow for historical corrections in all self-reported data sources.  
 # Numbers are calculated as difference in daily cumulative reported numbers to allow for historical corrections in all data sources. This can occasionally result in negative numbers, such as for VIC, where historical details about doses have been updated.

Source: Australian Immunisation Register

# Cumulative doses administered by channel

Data as at:  
21 Nov 2021



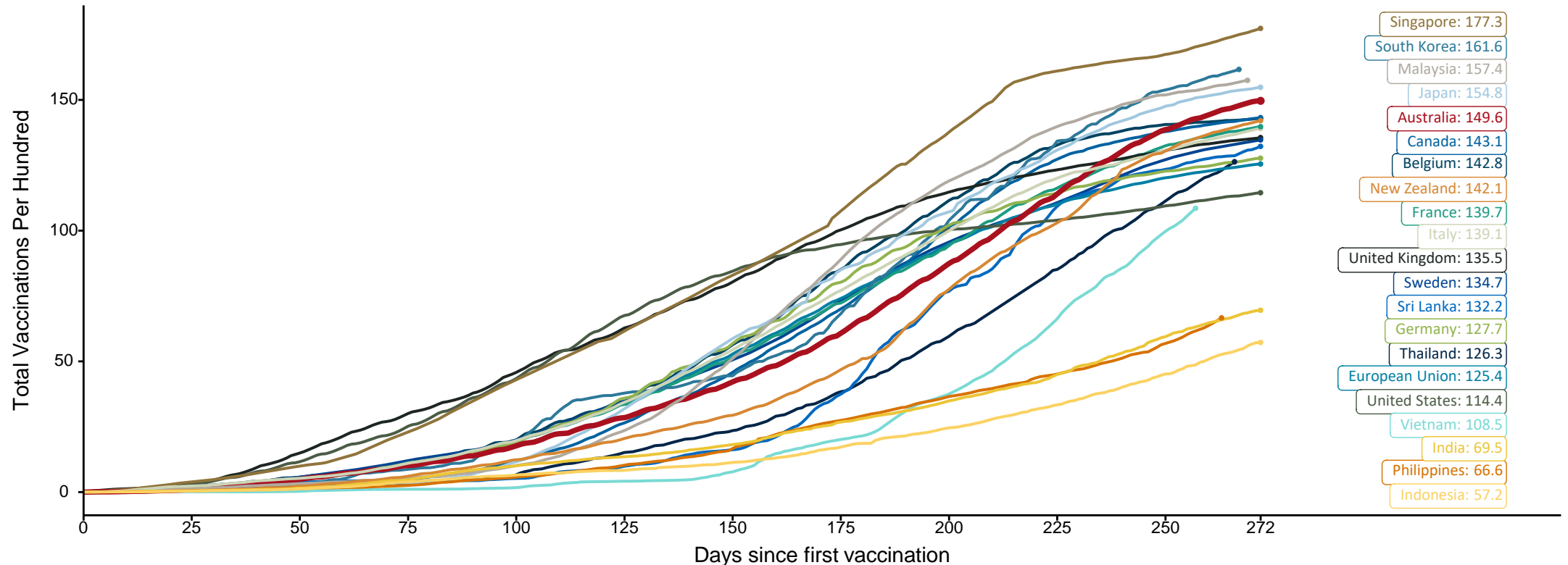
Source: Australian Immunisation Register

# Doses at equivalent stages of rollout (Day 272)

Data as at:  
21 Nov 2021

The x-axis is truncated at the length of Australia's vaccination program. Countries with intermittent reporting have had their doses per 100 imputed to Australia's current stage of rollout. Israel excluded as it is beyond scale of the graph.

Cumulative doses administered (21 Nov): **38,454,860**



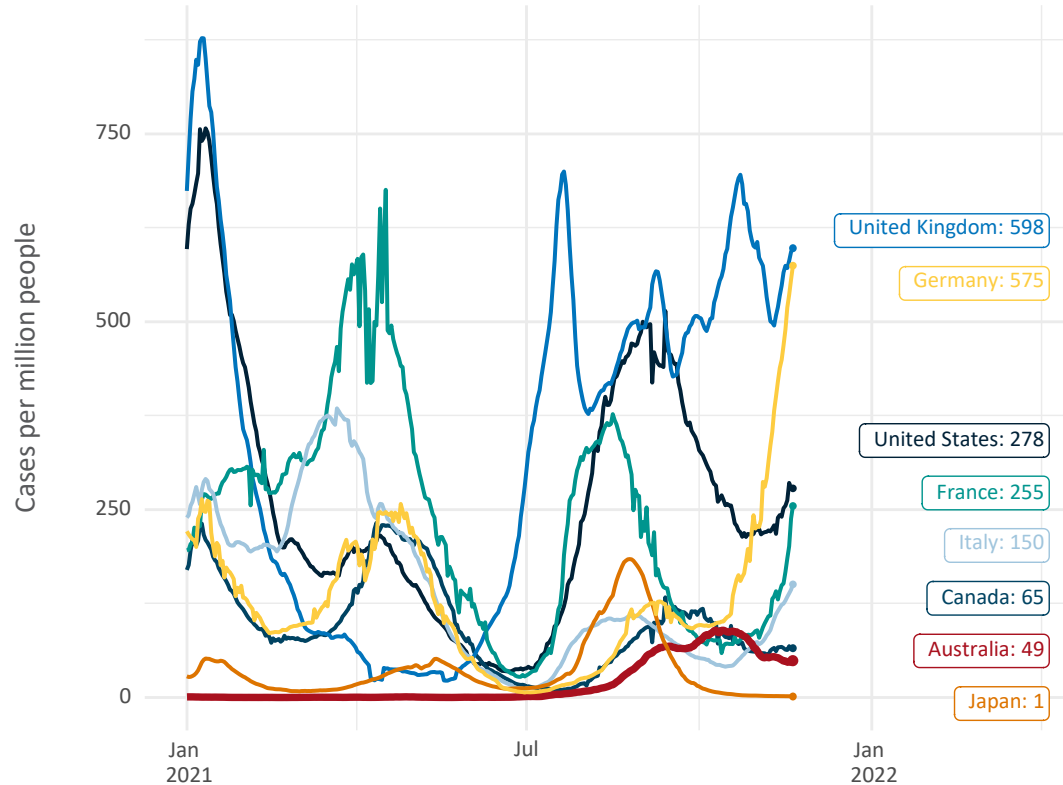
Note: From 15 September 2021, data for Australia includes all doses administered to people 12 and over. Prior to 15 September, data was for 16 and over  
 Source: Department of Health (Australia), Our World in Data (international)  
 Latest data: 21 November



Data as at:  
21 Nov 2021

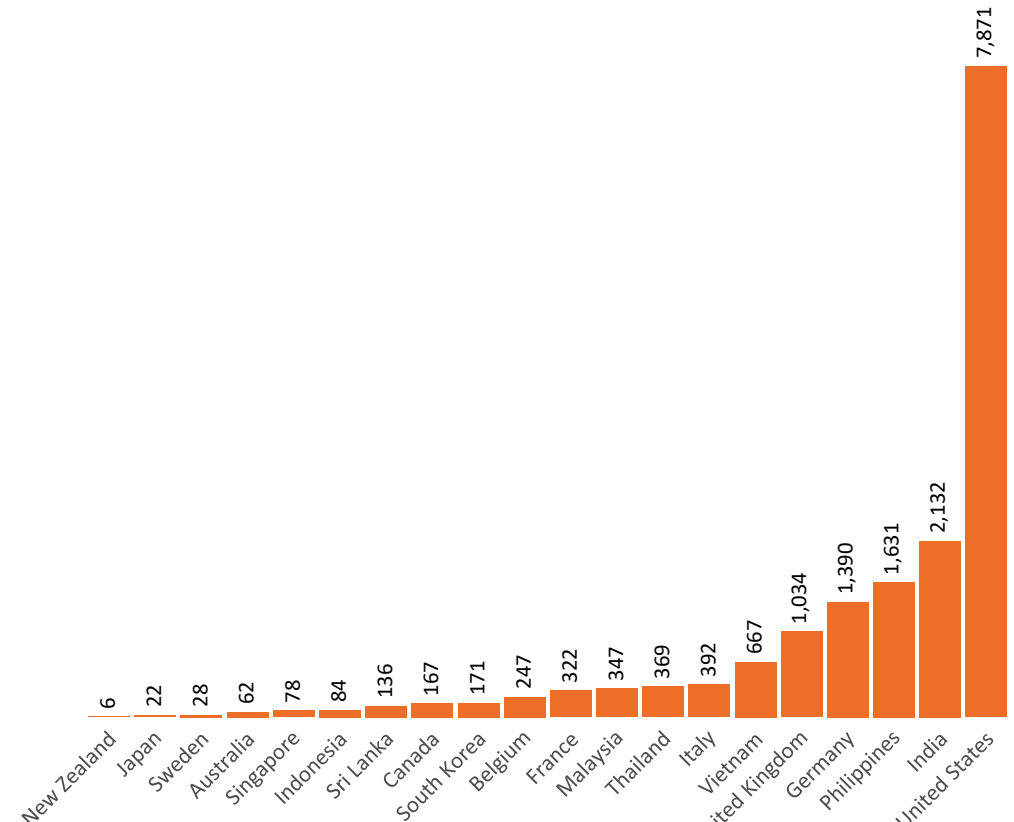
# International data – COVID-19

New daily cases per million in 2021, Australia and G7 countries  
Smoothed - 7 day average



Source: OWID  
Data downloaded: 22 Nov 2021 08:05  
Latest data: 20 Nov 2021


COVID-19 deaths in past 7 days - Australia and select countries



Source: OWID  
Data downloaded: 22 Nov 2021 08:05  
Latest data: 20 Nov 2021

# Pandemic Response Payments (Current)

Data as at midnight:  
21 Nov 2021



**2.37 million**  
People have received at least one COVID Disaster Payment (including ISP200)

**\$13.03 billion**  
Paid Out as at 21 Nov 2021

**6.05 million**  
Claims granted across three different payments




**94%**  
of Claims Received Digitally



<b>COVID Disaster Payment:</b>	5.84 million claims received - 2.19 million individuals paid a total of \$12.57 billion.
<b>\$200 Income Support Payment:</b>	350,000 claims received - 183,000 individuals paid a total of \$268.56 million.
<b>Pandemic Leave Disaster Payment:</b>	135,000 claims received - 115,000 individuals paid a total of \$188.76 million.

## CURRENT COVID-19 DISASTER PAYMENTS



**THREE PAYMENTS AVAILABLE**

**COVID Disaster Payment**  
assisting during a lockdown event in a Commonwealth hotspot.

**Income Support Payment \$200**  
for income support recipients who lost at least 8 hours of work.

**Pandemic Leave Disaster Payment**  
for those who have to self-isolate, quarantine or care.

For more information visit:  
[servicesaustralia.gov.au](https://servicesaustralia.gov.au)

**New South Wales**  
Lockdown from 24 Jun to 10 Oct  
Claiming period ends 27 Nov

**1.08m people have received at least one COVID Disaster Payment.**

**\$7.48b paid out as at 21 Nov 2021.**

**\$2m paid in initial and reoccurring payments in the week ending 21 Nov 2021.**

Cumulative payments made by State since activation on 1 Jul 2021.

Date	24 Oct	31 Oct	7 Nov	14 Nov	21 Nov
Payments	\$7.32b	\$7.42b	\$7.47b	\$7.48b	\$7.48b

**Victoria**  
Lockdown (#6) since 6 Aug to 28 Oct  
Claiming period ends 9 Dec

**744,000 people have received at least one COVID Disaster Payment.**

**\$4.43b paid out as at 21 Nov 2021.**

**\$46m paid in initial and reoccurring payments in the week ending 21 Nov 2021.**

Cumulative payments made by State since activation on 8 Jun 2021.

Date	24 Oct	31 Oct	7 Nov	14 Nov	21 Nov
Payments	\$4.07b	\$4.19b	\$4.31b	\$4.39b	\$4.43b

**Australian Capital Territory**  
Lockdown since 12 Aug to 14 Oct  
Claiming period ends 25 Nov

**65,000 people have received at least one COVID Disaster Payment.**

**\$344.7m paid out as at 21 Nov 2021.**

**\$162,000 paid in initial and reoccurring payments in the week ending 21 Nov 2021.**

Cumulative payments made by State since activation on 20 Aug 2021.

Date	24 Oct	31 Oct	7 Nov	14 Nov	21 Nov
Payments	\$329.3m	\$338.6m	\$343.4m	\$344.5m	\$344.7m

**Northern Territory**  
Lockdown (#2) from 5 Nov to 7 Nov  
Claiming period ends 2 Dec

**6,200 people have received at least one COVID Disaster Payment.**

**\$4.1m paid out as at 21 Nov 2021.**

**\$257,000 paid in initial payments in the week ending 21 Nov 2021.**

Cumulative payments made by State since activation on 25 Aug 2021.

Date	24 Oct	31 Oct	7 Nov	14 Nov	21 Nov
Payments	\$3.8m	\$3.8m	\$3.8m	\$3.9m	\$4.1m

Data as at midnight:  
21 Nov 2021

# Pandemic Response Payments (Closed Events)

## CLOSED COVID-19 DISASTER PAYMENTS


### Tasmania

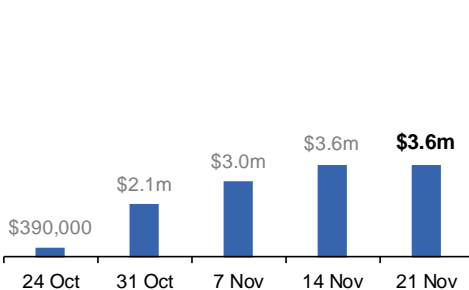
Lockdown from 15 Oct to 18 Oct  
Claiming period ended 12 Nov

**6,900 people have received at least one COVID Disaster Payment.**

**\$3.6m paid out as at 21 Nov 2021.**

**\$27,000 paid in initial payments in the week ending 21 Nov 2021.**

 Cumulative payments made by State since activation on 22 Oct 2021.




### Queensland

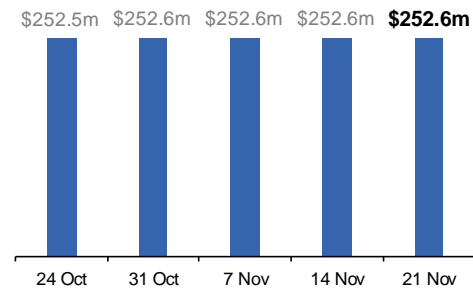
Lockdown from 31 Jul to 11 Aug  
Claiming period ended 28 Aug

**196,000 people have received at least one COVID Disaster Payment.**

**\$252.6m paid out as at 21 Nov 2021.**

**\$9,000 paid in initial and reoccurring payments in the week ending 21 Nov 2021.**

 Cumulative payments made by State since activation on 7 Aug 2021.




### South Australia

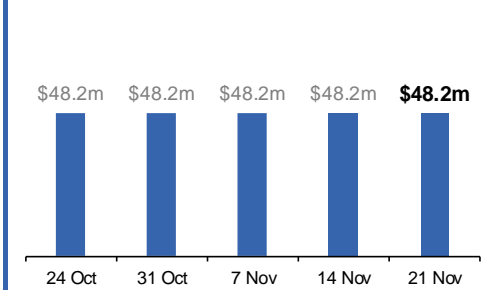
Lockdown from 21 to 27 Jul  
Claiming period ended 17 Aug

**86,000 people have received at least one COVID Disaster Payment.**

**\$48.2m paid out as at 21 Nov 2021.**

**Nil payments made in the week ending 21 Nov 2021.**

 Cumulative payments made by State since activation on 28 Jul 2021.



# Administration and Utilisation

## Doses as at Week 39

	Ordered	Available	Administered	Available minus Administered	Estimated Dose Utilisation %
	Up to Week 39	Delivered up to Week 38 including redistributions	Up to Week 39		(see note)
NSW	4,761,410	4,761,410	4,196,430	564,980	98%
VIC	5,767,154	5,767,154	4,717,638	1,049,516	92%
QLD	3,471,790	3,373,730	2,815,908	557,822	93%
WA	1,834,468	1,824,898	1,621,928	202,970	99%
SA	1,605,090	1,539,820	1,170,809	369,011	86%
TAS	475,780	458,230	448,456	9,774	Fully utilised
NT	284,444	255,536	218,781	36,755	96%
ACT	502,856	502,856	473,178	29,678	Fully utilised
<b>Jurisdiction delivered total</b>	<b>18,702,992</b>	<b>18,483,634</b>	<b>15,663,128</b>	<b>2,820,506</b>	<b>95%</b>
Commonwealth Aged Care & Disability	1,120,534	1,140,712	1,095,995	44,717	N/A
Commonwealth Primary Care & Other	29,055,572	28,313,976	21,695,737	6,618,239	87%
<b>Total</b>	<b>48,879,098</b>	<b>47,938,322</b>	<b>38,454,860</b>	<b>9,483,462</b>	<b>90%</b>

### About this data

- Ordered – Total doses delivered to sites. Based on logistics provider data. This figure includes doses allocated for administration in the coming week.
- Available – total doses that could have been administered to date, less doses re-distributed from States & Territories to Primary Care or Aged Care & Disability (i.e. does not include those deliveries recently received, and intended for use in the coming week).
- Administered – Doses administered as at 21 November 2021.
- The dose utilisation is calculated based on the total doses administered and a small % wastage in line with international standards in relation to total available doses.
- For Aged Care & Disability, the doses available for administration is for the full period (Weeks 1-39).
- Aged Care & Disability utilisation is not provided as the in-reach rollout is demand-based, with vaccines ordered based on resident numbers.