



Australian Government
Operation COVID Shield

COVID-19 Vaccine Roll-out

20 November 2021

Data as at:
19 Nov 2021

Total vaccine doses



38,359,413 total vaccine doses administered nationally as at 19 November
+120,465 recorded in the last 24 hours



18,840,794

people have had at least one dose

91.4%

of people over the age of 16 have had at least one dose



17,501,131

people are fully vaccinated

84.9%

of people over the age of 16 are fully vaccinated



324,285

people over the age of 16 who have received more than two doses

NSW
12,836,690
(+15,432 daily increase)

VIC
10,523,850
(+20,105 daily increase)

QLD
6,922,112
(+39,175 daily increase)

WA
3,488,466
(+19,646 daily increase)

TAS
818,383
(+6,307 daily increase)

SA
2,460,812
(+15,427 daily increase)

ACT
942,230
(+2,084 daily increase)

NT
366,870
(+2,289 daily increase)

*Administration state breakdown indicates state in which a vaccine was administered

**Overall dose count includes instances of more than two doses per person in a small number of cases.

Source: Australian Immunisation Register

Data as at:
19 Nov 2021

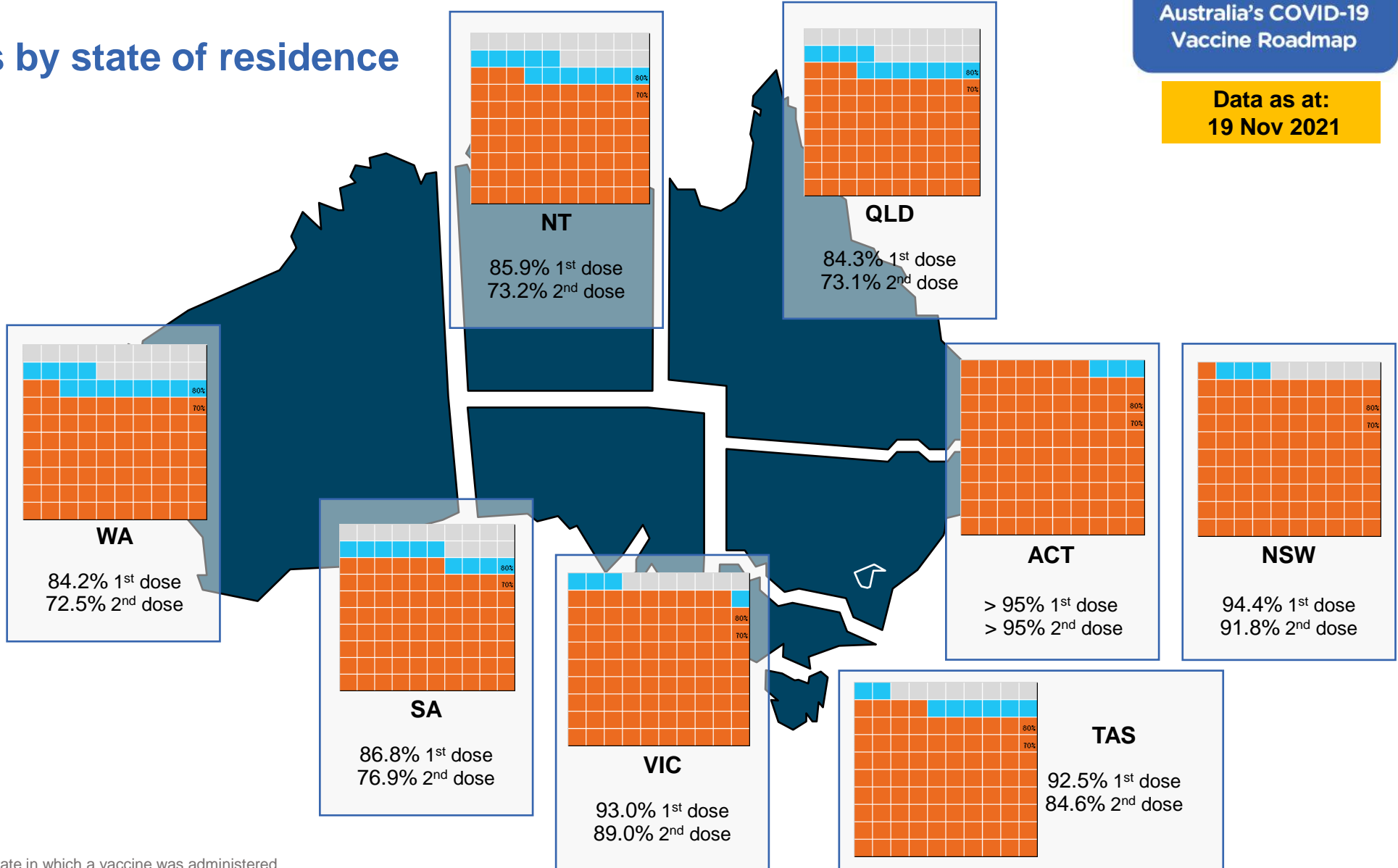
Vaccinations by state of residence

First doses

Age	Today	4 weeks ago	8 weeks ago
16+	91.4%	86.8%	76.3%
50+	>95%	94.5%	88.8%
70+	>95%	>95%	>95%

Fully vaccinated

Age	Today	4 weeks ago	8 weeks ago
16+	84.9%	73.2%	51.9%
50+	92.0%	83.4%	70.3%
70+	>95%	88.6%	78.6%



*Residential state may differ from the state in which a vaccine was administered

Commonwealth and Jurisdiction vaccine doses administered

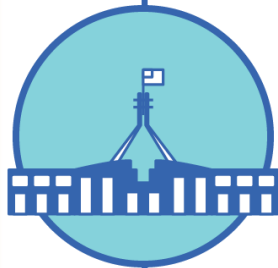
Data as at:
19 Nov 2021



38,359,413 total vaccine doses administered nationally as at 19 November
+ **120,465** recorded in the last 24 hours



15,621,192 doses administered by state and territory facilities
+ **32,955** recorded in the last 24 hours



22,738,221 doses administered by commonwealth facilities
+ **87,510** recorded in the last 24 hours
21,645,604 total vaccine doses administered in primary care settings
1,092,617 total vaccine doses administered in aged care and disability settings

NSW	Jurisdictions	Commonwealth
Cumulative	4,194,834	8,641,856
Daily increase	2,328	13,104

VIC	Jurisdictions	Commonwealth
Cumulative	4,710,870	5,812,980
Daily increase	-52	20,157

QLD	Jurisdictions	Commonwealth
Cumulative	2,804,156	4,117,956
Daily increase	12,349	26,826

WA	Jurisdictions	Commonwealth
Cumulative	1,614,243	1,874,223
Daily increase	5,651	13,995

TAS	Jurisdictions	Commonwealth
Cumulative	447,526	370,857
Daily increase	4,177	2,130

SA	Jurisdictions	Commonwealth
Cumulative	1,159,352	1,301,460
Daily increase	6,215	9,212

ACT	Jurisdictions	Commonwealth
Cumulative	472,336	469,894
Daily increase	1,320	764

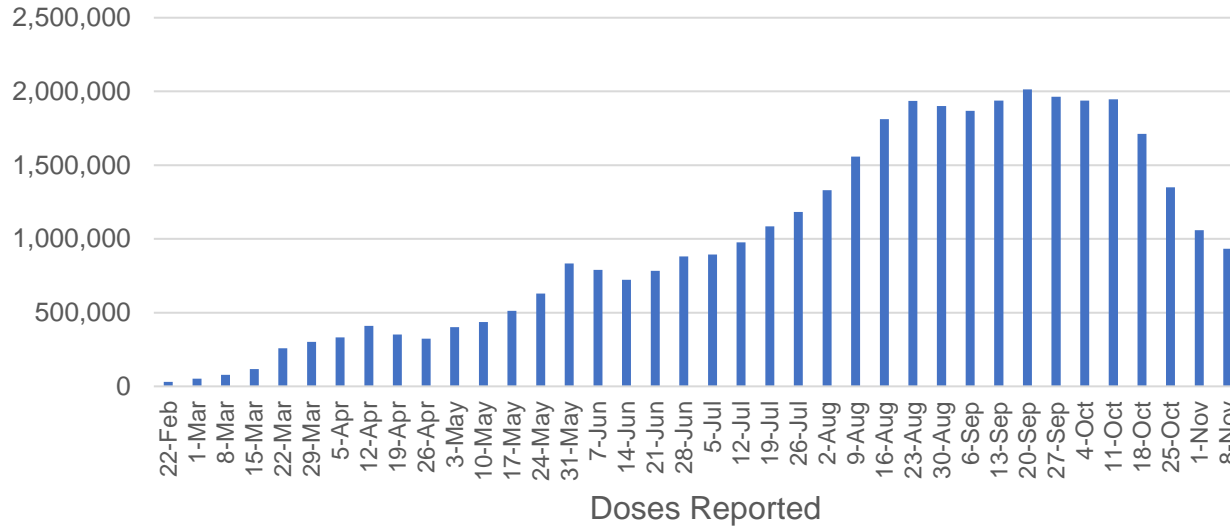
NT	Jurisdictions	Commonwealth
Cumulative	217,875	148,995
Daily increase	967	1,322

Vaccine milestone charts

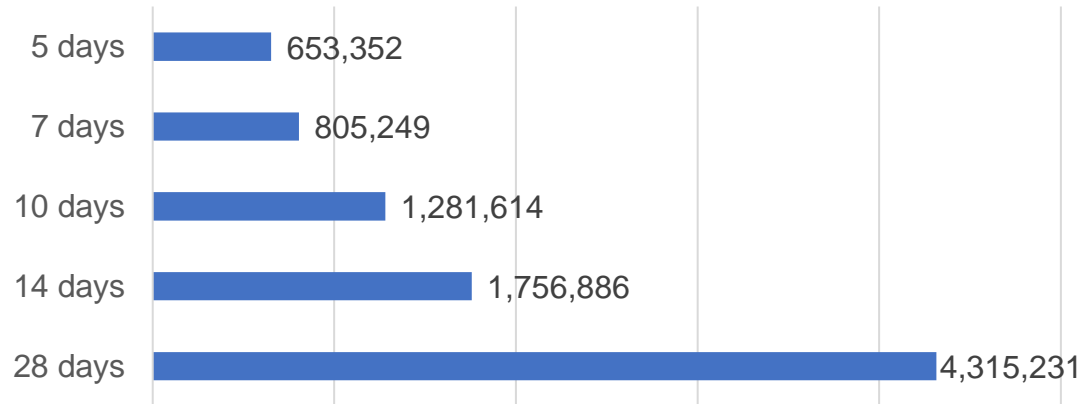
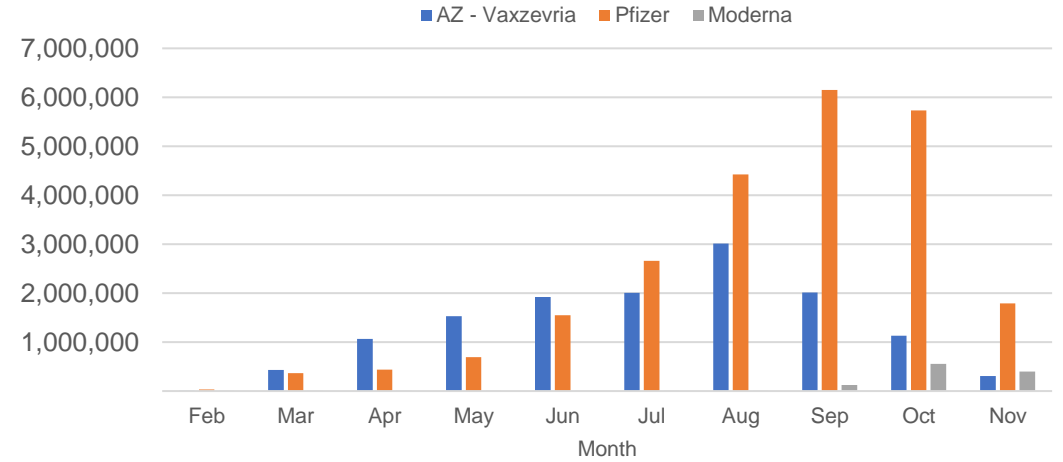
Data as at:
19 Nov 2021

Australia's COVID-19
Vaccine Roadmap

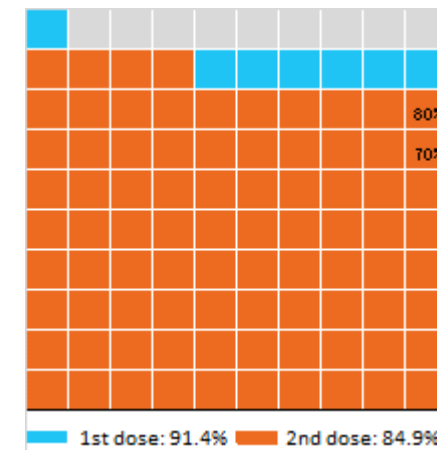
Doses Administered by Week



Doses by administration month and vaccine type



Eligible population percentage coverage



*Each square represents 1% of the national population. Squares are filled as milestones are achieved.

*Sourced from the Australian Immunisation Register.

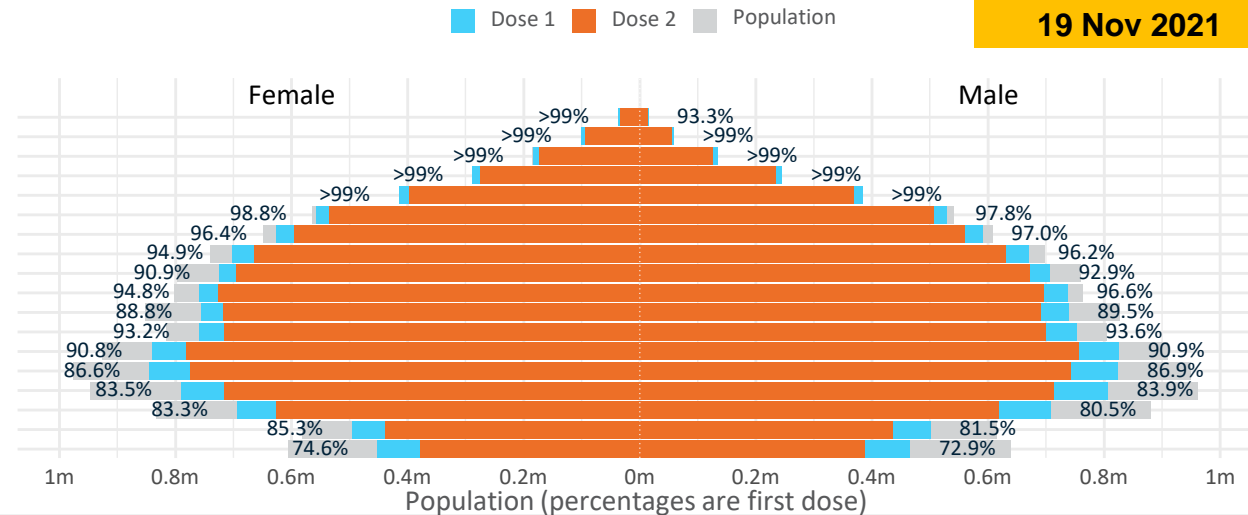
Doses by age and sex

First and second doses by age and sex

Data as at:
19 Nov 2021

	16+	50+	70+	12-15
Dose 1	91.37% (18,840,794 doses / 20,619,959 people)	96.82% (8,471,487 doses / 8,749,703 people)	>99% (2,949,888 doses / 2,934,706 people)	73.76% (917,509 doses / 1,243,990 people)
Dose 2	84.87% (17,501,131 doses / 20,619,959 people)	92.01% (8,050,977 doses / 8,749,703 people)	95.76% (2,810,225 doses / 2,934,706 people)	61.50% (765,045 doses / 1,243,990 people)

Age	Dose 1	Dose 2
95+	51,842 (98.0%)	46,886 (88.6%)
90-94	160,158 (>99%)	148,508 (93.7%)
85-89	318,662 (>99%)	299,719 (94.8%)
80-84	533,158 (>99%)	507,777 (96.1%)
75-79	798,580 (>99%)	765,999 (99.0%)
70-74	1,087,488 (98.4%)	1,041,336 (94.2%)
65-69	1,218,071 (96.8%)	1,156,178 (91.9%)
60-64	1,374,166 (95.7%)	1,294,838 (90.1%)
55-59	1,431,102 (92.0%)	1,367,892 (87.9%)
50-54	1,498,260 (95.8%)	1,421,844 (90.9%)
45-49	1,495,545 (89.2%)	1,409,488 (84.1%)
40-44	1,515,080 (93.5%)	1,416,650 (87.4%)
35-39	1,671,019 (91.1%)	1,540,611 (84.0%)
30-34	1,676,436 (87.1%)	1,522,069 (79.1%)
25-29	1,606,447 (84.3%)	1,437,164 (75.4%)
20-24	1,407,896 (82.2%)	1,248,912 (72.9%)
16-19	996,884 (83.4%)	875,260 (73.2%)
12-15	917,509 (73.8%)	765,045 (61.5%)



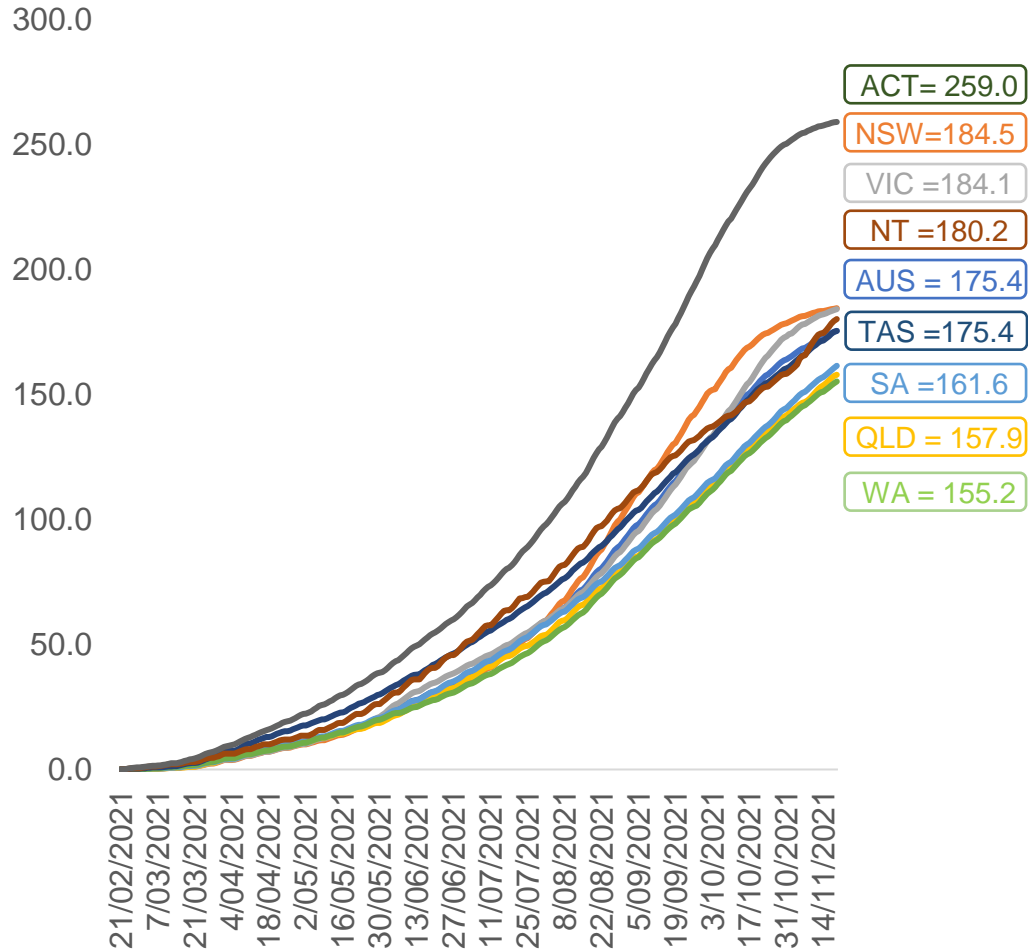
	AUS	ACT	NSW	NT	QLD	SA	TAS	VIC	WA
16 and over - dose 1	18,840,794	344,779	6,195,288	163,630	3,469,062	1,250,597	407,047	5,026,975	1,779,864
16 and over - dose 2	17,501,131	335,315	6,026,794	139,440	3,004,760	1,107,338	372,501	4,814,476	1,532,448
16 and over - population	20,619,959*	344,037	6,565,651	190,571	4,112,707	1,440,400	440,172	5,407,574	2,114,978
16 and over % with dose 1	91.37%	>99%	94.36%	85.86%	84.35%	86.82%	92.47%	92.96%	84.16%
16 and over % with dose 2	84.87%	97.46%	91.79%	73.17%	73.06%	76.88%	84.63%	89.03%	72.46%
50 and over - dose 1	8,471,487	133,452	2,761,989	55,380	1,635,660	633,261	210,357	2,161,783	823,169
50 and over - dose 2	8,050,977	130,458	2,701,721	50,511	1,508,151	581,386	196,520	2,086,014	747,908
50 and over - population	8,749,703	127,802	2,807,793	62,280	1,758,855	674,384	220,036	2,211,211	885,370
50 and over % with dose 1	96.82%	>99%	98.37%	88.92%	93.00%	93.90%	95.60%	97.76%	92.97%
50 and over % with dose 2	92.01%	>99%	96.22%	81.10%	85.75%	86.21%	89.31%	94.34%	84.47%
70 and over - dose 1	2,949,888	43,464	974,811	11,340	565,490	237,661	77,309	744,436	273,826
70 and over - dose 2	2,810,225	42,315	950,105	10,506	529,672	219,450	72,115	715,770	251,616
70 and over - population	2,934,706	39,946	962,606	12,343	577,767	240,514	77,155	743,519	280,281
70 and over % with dose 1	>99%	>99%	>99%	91.87%	97.88%	98.81%	>99%	>99%	97.70%
70 and over % with dose 2	95.76%	>99%	98.70%	85.12%	91.68%	91.24%	93.47%	96.27%	89.77%
12 to 15 - dose 1	917,509	19,627	316,061	8,849	164,715	51,562	18,202	260,529	71,087
12 to 15 - dose 2	765,045	18,624	293,788	6,371	117,011	34,784	13,700	230,002	45,921
12 to 15 - population	1,243,990	19,693	390,330	13,060	270,146	82,747	26,308	308,611	132,869
12 to 15 % with dose 1	73.76%	>99%	80.97%	67.76%	60.97%	62.31%	69.19%	84.42%	53.50%
12 to 15 % with dose 2	61.50%	94.57%	75.27%	48.78%	43.31%	42.04%	52.08%	74.53%	34.56%

*National population will not equal sum of listed jurisdictions due to a small number of people counted in national population residing in some 'other' territories. Sum of state doses will not add to national total as some records are unable to be geocoded to a State or Territory.

Doses sourced from Australian Immunisation Register, population from ABS ERP June 2020

Vaccinations by location

Cumulative total doses administered vs eligible state populations*

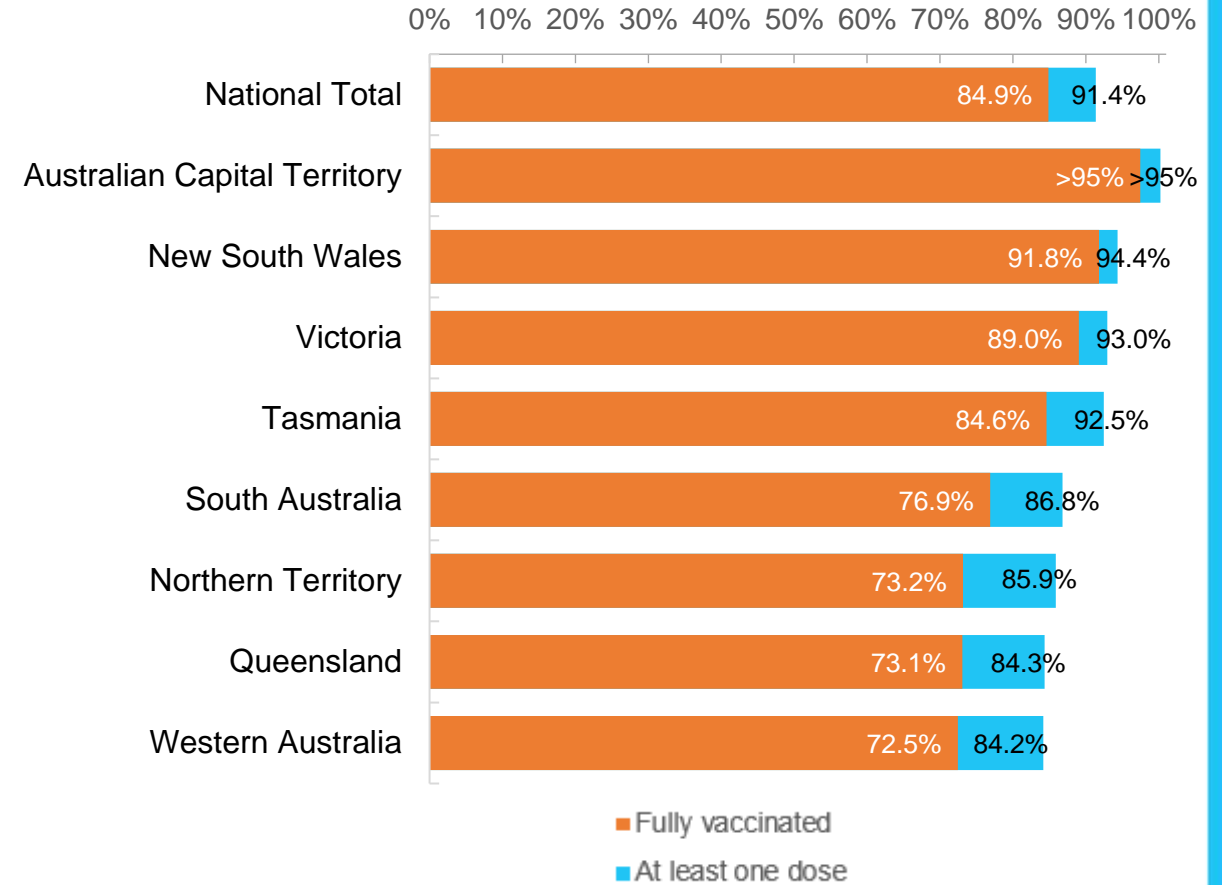


*Not an indication of percentage vaccinated, numbers will exceed 100 due to multiple doses required per person of the population. All doses are included, including those for the 12-15 cohort, and are based on vaccination provider location.

Data as at:
19 Nov 2021

Australia's COVID-19
Vaccine Roadmap

First and Second Doses by state of residence



Aboriginal and Torres Strait Islander peoples

Number of people vaccinated

Data as at:
16 Nov 2021
Updated weekly

Australia's COVID-19
Vaccine Roadmap



367,389

people over the age of 16
have had at least one dose

69.3%

of people over the age of 16
have had at least one dose



306,291

people over the age of 16
are fully vaccinated

57.6%

of people over the age of 16 are
fully vaccinated



**35,593
(49.6%)**

people aged 12-15 years
have had at least one dose

172 Aboriginal community controlled health services (ACCHS)

0#	50	26	40	12	3	21	18
ACT	NSW	NT	QLD	SA	TAS	VIC	WA

Medicare Address State ^{##}	Individuals Dose 1	Individuals Dose 1 %	Individuals Dose 2	Individuals Dose 2 %
Australian Capital Territory	4,848	89.2%	4,574	84.0%
New South Wales	135,005	84.3%	126,585	79.0%
Northern Territory	33,244	72.3%	24,396	52.8%
Queensland	86,682	60.0%	65,542	45.2%
South Australia	15,566	60.5%	12,064	46.7%
Tasmania	13,122	76.3%	11,510	66.6%
Victoria	34,740	85.9%	31,456	77.6%
Western Australia	32,058	49.9%	21,820	33.8%
Unknown/Other Territories	12,124	45.0%	8,344	30.8%
Totals	367,389	69.3%	306,291	57.6%

Source: Australian Immunisation Register

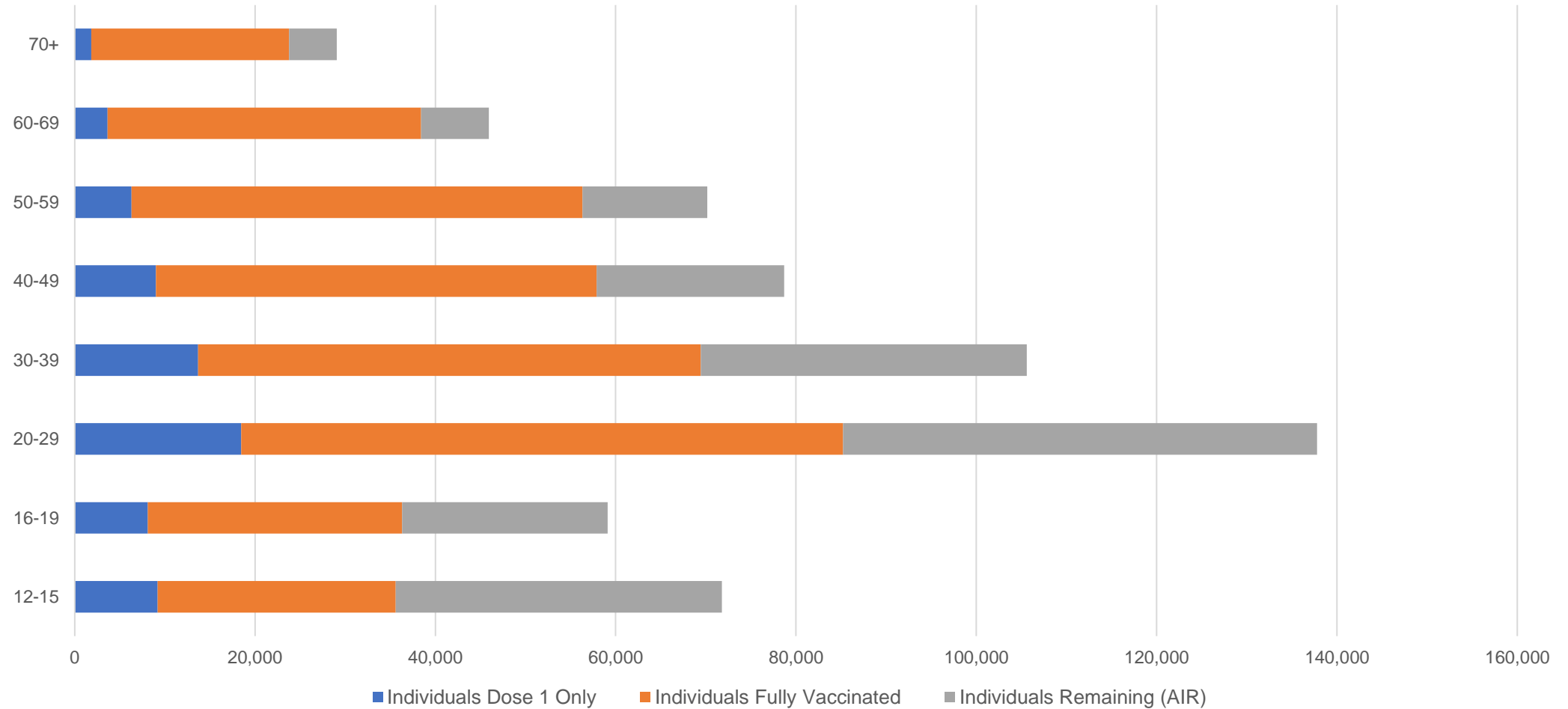
*Identifying as Aboriginal and Torres Strait Islander is optional and the estimated population may be under reported.
 **Includes all Aboriginal and Torres Strait Islander peoples who have received a vaccination, not limited to those administered in an ACCHS setting
 #ACCHS in the ACT are currently operating as a Commonwealth Vaccine Clinics so not included to avoid double counting
 ##The above table includes all identified Aboriginal and Torres Strait Islander people who are aged 16 and above by their state of residence.

Aboriginal and Torres Strait Islander peoples

Number of people vaccinated by age

Data as at:
16 Nov 2021
Updated weekly

Australia's COVID-19
Vaccine Roadmap



Source: Australian Immunisation Register

Data as at:
19 Nov 2021

Commonwealth primary care



Primary care vaccine administration sites

5,441	137	173	3,447
GPs	CVCs	ACCHS	Pharmacies

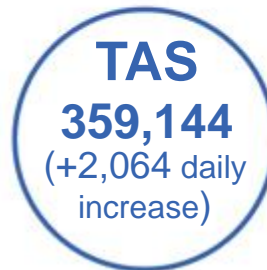


21,645,604 total vaccine doses administered
primary care settings as at 19 November

+ 85,028 recorded in the last 24 hours

Primary care vaccinations by provider type

	Doses administered	Daily increase	7 day increase
General Practice* includes other Commonwealth	19,474,931	56,870	355,011
Pharmacy	2,170,673	28,158	154,564



150,291 doses administered to persons residing in other territories or with missing residential information

*General practice includes Commonwealth Vaccination Clinics, Aboriginal Community Health Centres, Royal Flying Doctor Service and other Commonwealth vaccination facilities

Source: Australian Immunisation Register

Data as at:
19 Nov 2021

Commonwealth aged care and disability doses administered



1,092,617 (+ 2,482 last 24 hours)

Total vaccine doses administered in aged care and disability facilities as at 19 November

Number of doses administered as part of the Commonwealth aged and disability care rollout

NSW
516,767
(+542 daily increase)

VIC
203,231
(+570 daily increase)

QLD
164,734
(+515 daily increase)

WA
76,731
(+331 daily increase)

TAS
18,198
(+99 daily increase)

SA
66,940
(+253 daily increase)

ACT
13,802
(+57 daily increase)

NT
6,164
(+42 daily increase)

26,050

doses administered to persons residing in other territories or with missing residential information

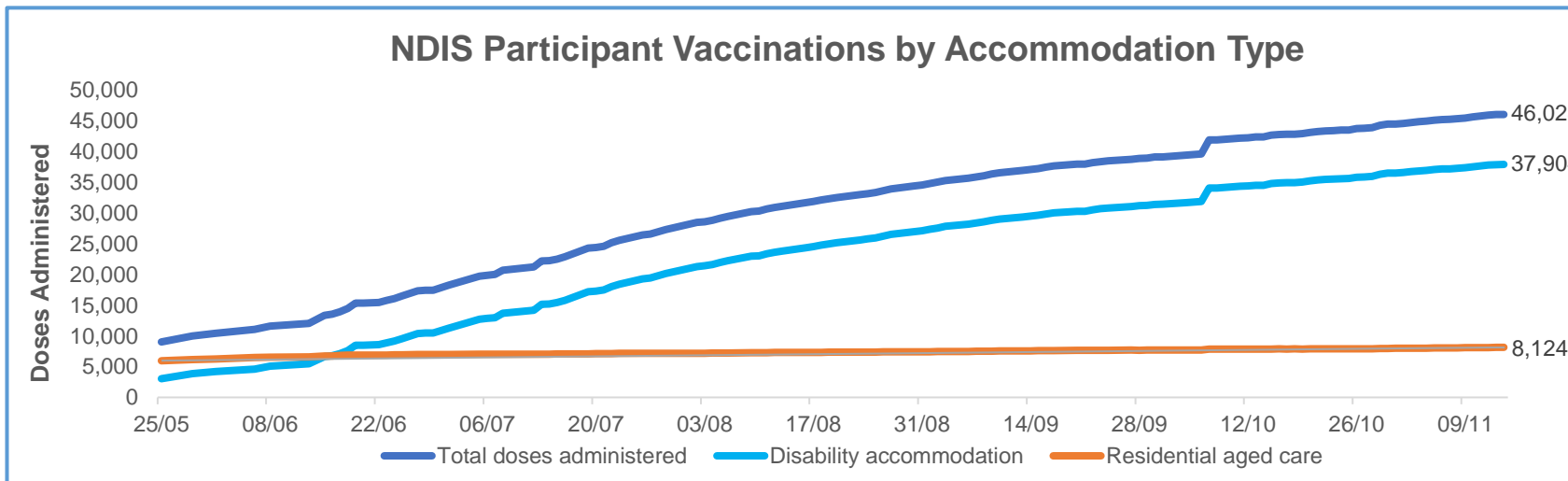
*Sourced from the Australian Immunisation Register. Includes all persons vaccinated at participating residential aged care, disability and related industry settings.
**State level breakdown indicates the residential location and may not align to the state in which the vaccination occurred.

Source: Australian Immunisation Register

Data as at:
15 Nov 2021*

Vaccination rate of people with disability and the disability workforce

Phase 1a – People with disability living in shared accommodation



	Total people with at least one dose	People fully vaccinated	Total number of individuals in cohort	Total doses administered	% People with at least one dose	% People fully vaccinated
NDIS participants living in shared accommodation **	23,650	22,378	27,603	46,028	85.7%	81.1%
NDIS screened workers ***	207,058	194,060	242,348	401,118	85.4%	80.1%



* Updates are available Monday to Friday on participants, and bi-weekly for workers, numbers may be up to four days old.

** Shared accommodation means two or more people with disability living in shared residential accommodation and NDIS participants living in Residential Aged Care accommodation as per the eligibility criteria of Phase 1a.

*** Total number of workers within the NDIS Commission Worker Screening database who have ever been successfully screened and linked to an NDIS registered provider or participant.

Source: Linkage between National Disability Insurance Agency data, NDIS Quality and Safeguards Commission data and the Australian Immunisation Register.

Residential aged care vaccination rollout

Residential aged care facilities status

100%

Commonwealth facilities visited (2,554 planned sites)

161,289

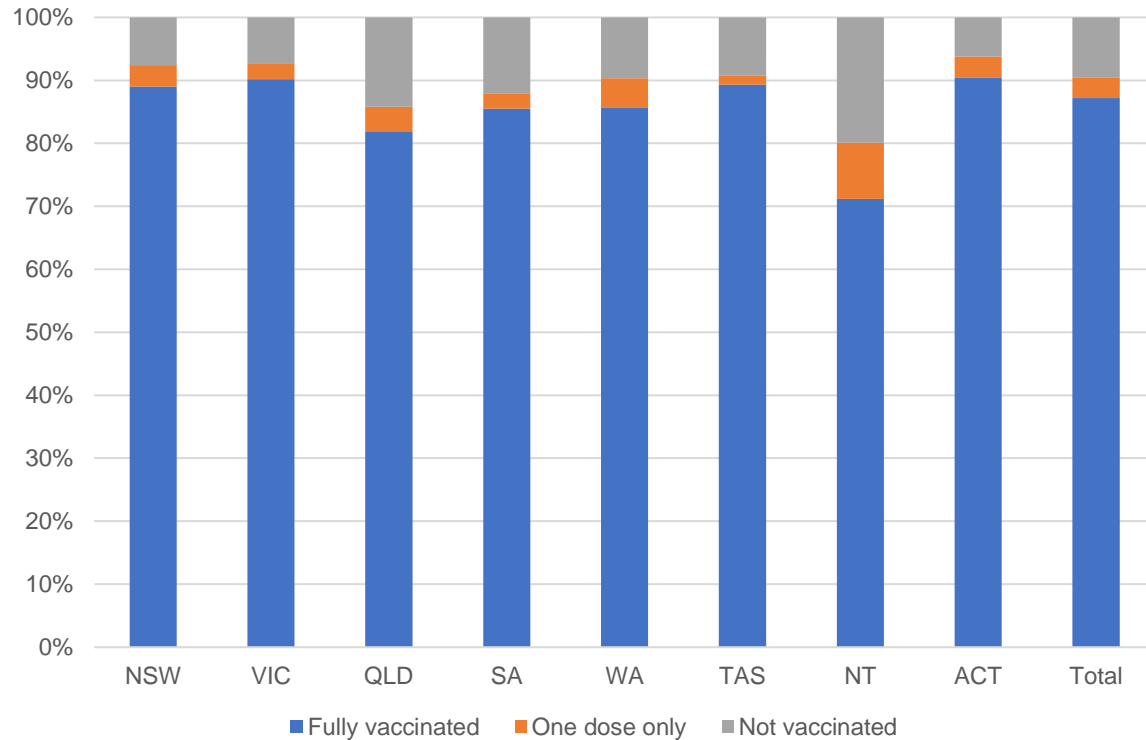
People fully vaccinated

167,416

People with at least one dose

Data as at: 18 Nov 2021

Aged care resident vaccinations



Aged care worker vaccinations

Jurisdictions	Total workers with at least one dose	Workers fully vaccinated	% Workers with at least one dose	% Workers fully vaccinated
NSW	78,649	78,157	99.4%	98.8%
VIC	70,642	69,774	99.6%	98.3%
QLD	48,815	47,667	99.8%	97.5%
SA	27,445	26,605	100.0%	96.9%
WA	23,536	22,856	100.0%	97.1%
TAS	7,654	7,401	100.0%	96.7%
NT	820	817	99.5%	99.2%
ACT	2,962	2,933	100.0%	99.0%
Total	260,523	256,210	99.7%	98.0%

Source: My Aged Care Portal staff vaccination progress

**Resident vaccination information is reported manually by service providers

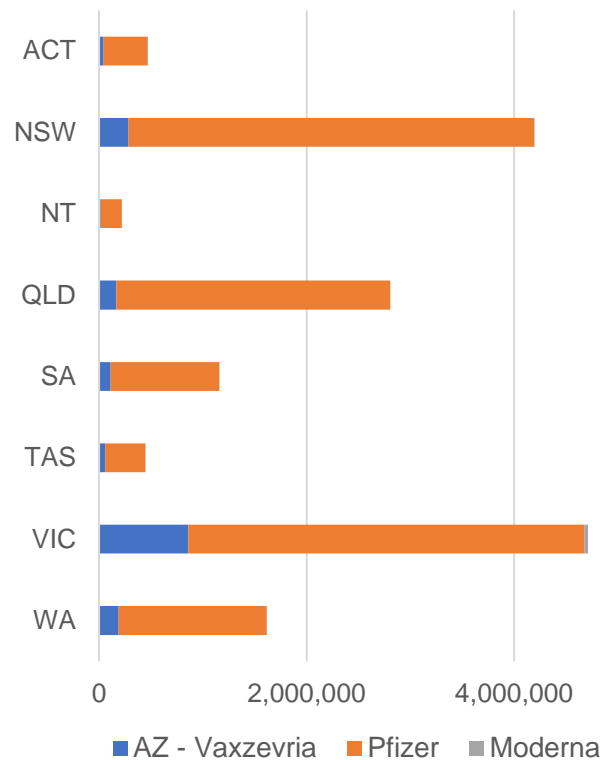
*Status updates are provided by facilities at least once per week. Reporting is updated Monday to Friday to encompass different facility updates being made on different days.

Data is sourced directly from Aged Care Service Providers and is not drawn or closely aligned with data from AIR due to inconsistencies and potential lags in uploading of records.

Data as at:
19 Nov 2021

Jurisdiction administered

Total vaccine doses administered in State and Territory clinics as at 19 November



15,621,192 total vaccine doses administered in State and Territory clinics as at 19 November
 + **32,955** recorded in the last 24 hours
 + **276,790** recorded in the last 7 days

NSW
4,194,834
 (+2,328 daily increase)

VIC
4,710,870
 (-52[#] daily increase)

QLD
2,804,156
 (+12,349 daily increase)

WA
1,614,243
 (+5,651 daily increase)

TAS
447,526
 (+4,177 daily increase)

SA
1,159,352
 (+6,215 daily increase)

ACT
472,336
 (+1,320 daily increase)

NT
217,875
 (+967 daily increase)

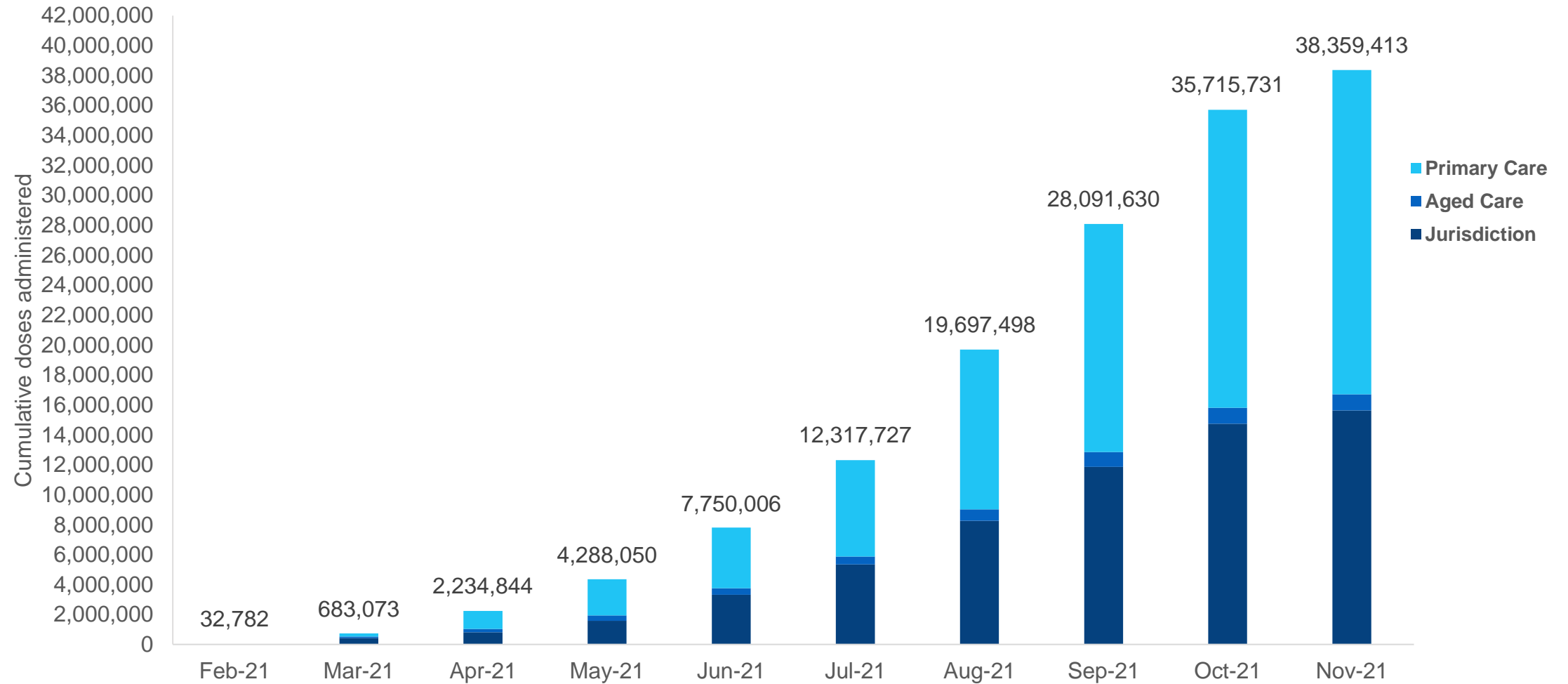
*Sourced from the Australian Immunisation Register and self-reported data. Numbers are calculated as difference in daily cumulative reported numbers to allow for historical corrections in all self-reported data sources.

Numbers are calculated as difference in daily cumulative reported numbers to allow for historical corrections in all data sources.

Source: Australian Immunisation Register

Data as at:
19 Nov 2021

Cumulative doses administered by channel



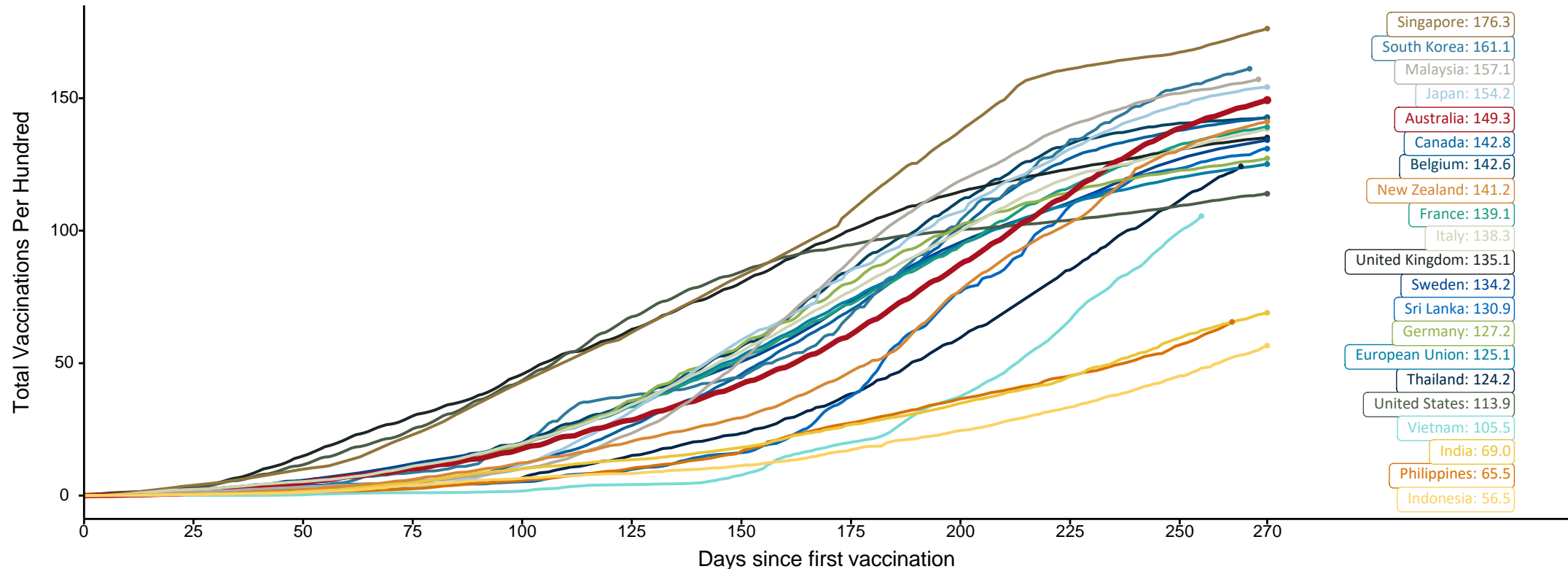
Source: Australian Immunisation Register

Doses at equivalent stages of rollout (Day 270)

Data as at:
19 Nov 2021

The x-axis is truncated at the length of Australia's vaccination program. Countries with intermittent reporting have had their doses per 100 imputed to Australia's current stage of rollout. Israel excluded as it is beyond scale of the graph

Cumulative doses administered (19 Nov): **38,359,413**

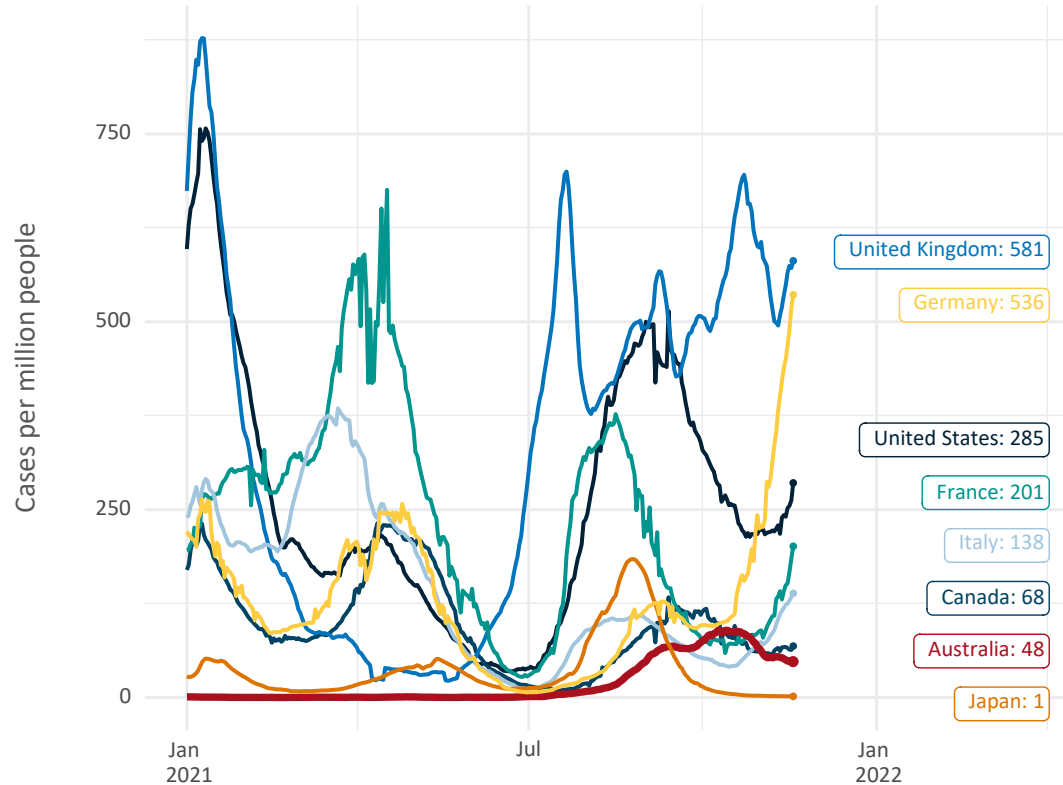


Note: From 15 September 2021, data for Australia includes all doses administered to people 12 and over. Prior to 15 September, data was for 16 and over
 Source: Department of Health (Australia), Our World in Data (international)
 Latest data: 19 November

Data as at:
19 Nov 2021

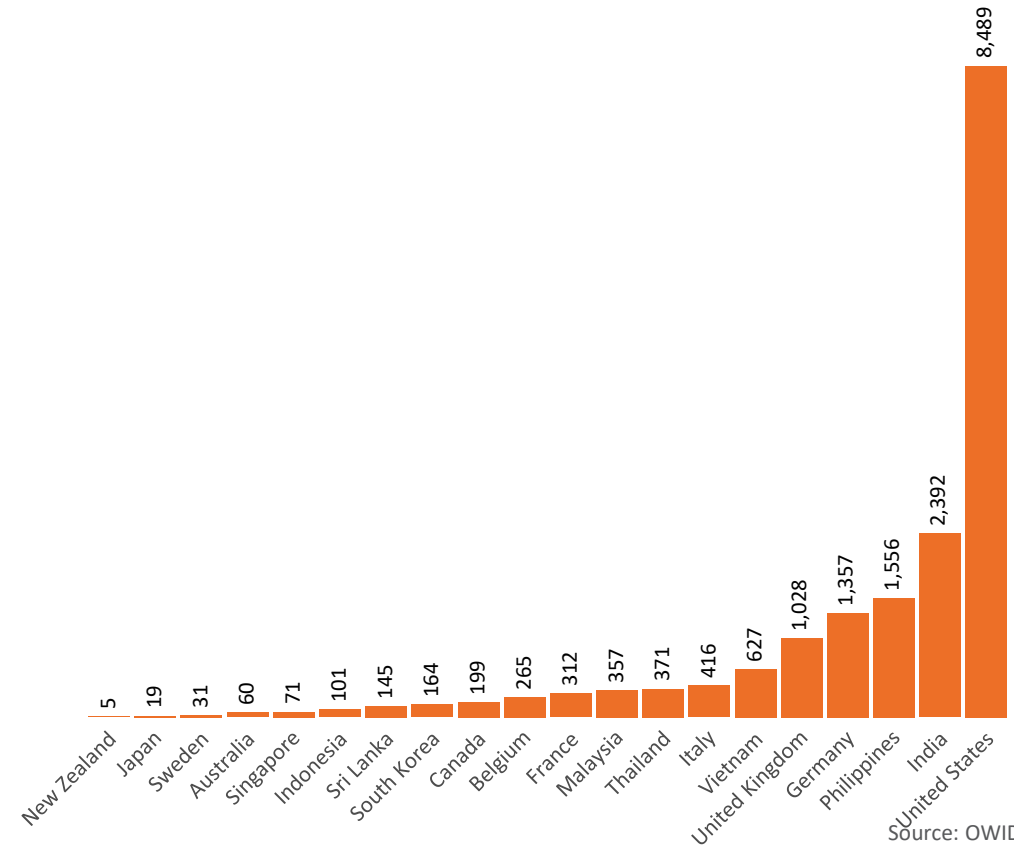
International data – COVID-19

New daily cases per million in 2021, Australia and G7 countries
Smoothed - 7 day average



Source: OWID
Data downloaded: 20 Nov 2021 10:11
Latest data: 18 Nov 2021


COVID-19 deaths in past 7 days - Australia and select countries



Source: OWID
Data downloaded: 20 Nov 2021 10:11
Latest data: 18 Nov 2021

Pandemic Response Payments (Current)

Data as at midnight:
19 Nov 2021



2.37 million
People have received at least one COVID Disaster Payment (including ISP200)

\$13.02 billion
Paid Out as at 19 Nov 2021


6.03 million
Claims granted across three different payments



94%
of Claims Received Digitally



COVID Disaster Payment:	5.82 million claims received - 2.19 million individuals paid a total of \$12.56 billion.
\$200 Income Support Payment:	349,000 claims received - 183,000 individuals paid a total of \$268.50 million.
Pandemic Leave Disaster Payment:	135,000 claims received - 115,000 individuals paid a total of \$188.68 million.



THREE PAYMENTS AVAILABLE

COVID Disaster Payment
assisting during a lockdown event in a Commonwealth hotspot.

Income Support Payment \$200
for income support recipients who lost at least 8 hours of work.

Pandemic Leave Disaster Payment
for those who have to self-isolate, quarantine or care.

For more information visit:
servicesaustralia.gov.au

CURRENT COVID-19 DISASTER PAYMENTS

New South Wales
Lockdown from 24 Jun to 10 Oct
Claiming period ends 27 Nov

1.08m people have received at least one COVID Disaster Payment.

\$7.48b paid out as at 19 Nov 2021.

\$9m paid in initial and reoccurring payments in the week ending 14 Nov 2021.

Cumulative payments made by State since activation on 1 Jul 2021.

Date	Cumulative Payments (\$b)
24 Oct	\$7.32b
31 Oct	\$7.42b
7 Nov	\$7.47b
14 Nov	\$7.48b
19 Nov	\$7.48b

Victoria
Lockdown (#6) since 6 Aug to 28 Oct
Claiming period ends 9 Dec

744,000 people have received at least one COVID Disaster Payment.

\$4.43b paid out as at 19 Nov 2021.

\$82m paid in initial and reoccurring payments in the week ending 14 Nov 2021.

Cumulative payments made by State since activation on 8 Jun 2021.

Date	Cumulative Payments (\$b)
24 Oct	\$4.07b
31 Oct	\$4.19b
7 Nov	\$4.31b
14 Nov	\$4.39b
19 Nov	\$4.43b

Australian Capital Territory
Lockdown since 12 Aug to 14 Oct
Claiming period ends 25 Nov

65,000 people have received at least one COVID Disaster Payment.

\$344.6m paid out as at 19 Nov 2021.

\$1.0m paid in initial and reoccurring payments in the week ending 14 Nov 2021.

Cumulative payments made by State since activation on 20 Aug 2021.

Date	Cumulative Payments (\$m)
24 Oct	\$329.3m
31 Oct	\$338.6m
7 Nov	\$343.4m
14 Nov	\$344.5m
19 Nov	\$344.6m

Northern Territory
Lockdown (#2) from 5 Nov to 7 Nov
Claiming period ends 2 Dec

6,100 people have received at least one COVID Disaster Payment.

\$4.1m paid out as at 19 Nov 2021.

\$133,000 paid in initial payments in the week ending 14 Nov 2021.

Cumulative payments made by State since activation on 25 Aug 2021.

Date	Cumulative Payments (\$m)
24 Oct	\$3.8m
31 Oct	\$3.8m
7 Nov	\$3.8m
14 Nov	\$3.9m
19 Nov	\$4.1m

Data as at midnight:
19 Nov 2021

Pandemic Response Payments (Closed Events)

CLOSED COVID-19 DISASTER PAYMENTS

Tasmania

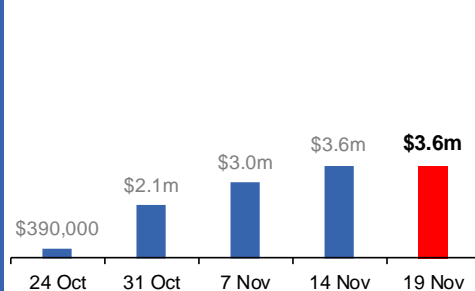
Lockdown from 15 Oct to 18 Oct
Claiming period ended 12 Nov

6,900 people have received at least one COVID Disaster Payment.

\$3.6m paid out as at 19 Nov 2021.

\$565,000 paid in initial payments in the week ending 14 Nov 2021.

 Cumulative payments made by State since activation on 22 Oct 2021.




Queensland

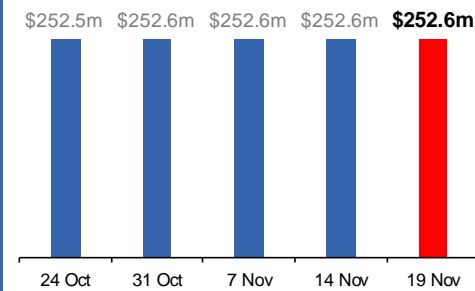
Lockdown from 31 Jul to 11 Aug
Claiming period ended 28 Aug

196,000 people have received at least one COVID Disaster Payment.

\$252.6m paid out as at 19 Nov 2021.

\$14,000 paid in initial and reoccurring payments in the week ending 14 Nov 2021.

 Cumulative payments made by State since activation on 7 Aug 2021.




South Australia

Lockdown from 21 to 27 Jul
Claiming period ended 17 Aug

86,000 people have received at least one COVID Disaster Payment.

\$48.2m paid out as at 19 Nov 2021.

Nil payments made in the week ending 14 Nov 2021.

 Cumulative payments made by State since activation on 28 Jul 2021.

