



Australian Government
Operation COVID Shield

COVID-19 Vaccine Rollout

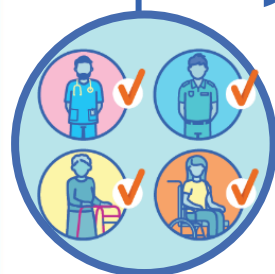
19 November 2021

Data as at:
18 Nov 2021

Total vaccine doses



38,238,948 total vaccine
doses administered nationally as at 18 November
+127,909 recorded in the last 24 hours



18,810,096

people have had at least one
dose

91.2%

of people over the age of 16
have had at least one dose



17,435,315

people are fully vaccinated

84.6%

of people over the age of 16 are
fully vaccinated



312,339

people over the age of 16
who have received more
than two doses

NSW
12,821,258
(+16,080 daily
increase)

VIC
10,503,745
(+25,292 daily
increase)

QLD
6,882,937
(+44,312 daily
increase)

WA
3,468,820
(+20,144 daily
increase)

TAS
812,076
(+2,237 daily
increase)

SA
2,445,385
(+14,946 daily
increase)

ACT
940,146
(+2,302 daily
increase)

NT
364,581
(+2,596 daily
increase)

*Administration state breakdown indicates state in which a vaccine was administered

**Overall dose count includes instances of more than two doses per person in a small number of cases.

Source: Australian Immunisation Register

Data as at:
18 Nov 2021

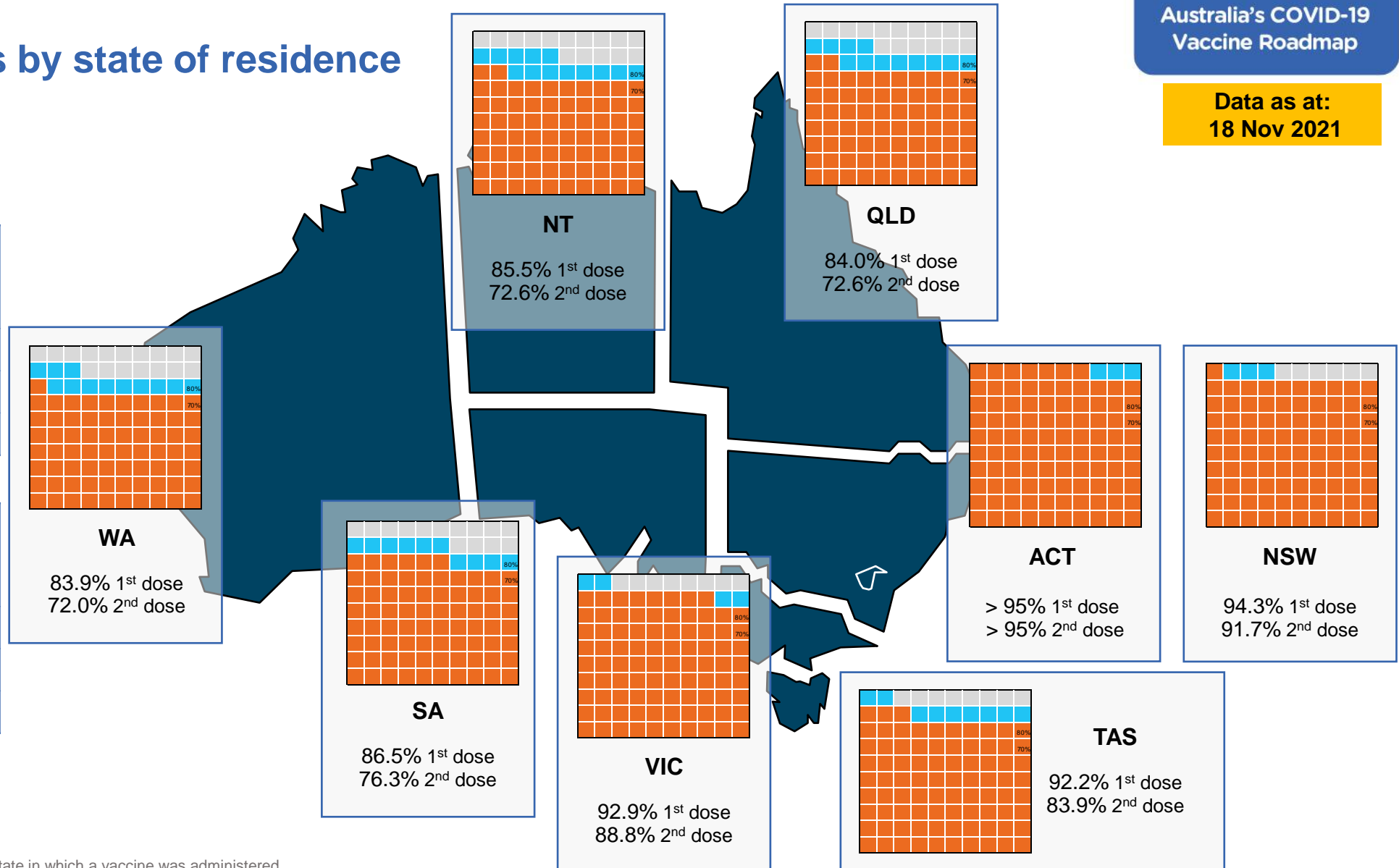
Vaccinations by state of residence

First doses

Age	Today	4 weeks ago	8 weeks ago
16+	91.2%	86.5%	75.8%
50+	>95%	94.3%	88.6%
70+	>95%	>95%	95.0%

Fully vaccinated

Age	Today	4 weeks ago	8 weeks ago
16+	84.6%	72.3%	51.1%
50+	91.7%	82.9%	69.8%
70+	>95%	88.2%	78.2%



*Residential state may differ from the state in which a vaccine was administered

Commonwealth and Jurisdiction vaccine doses administered

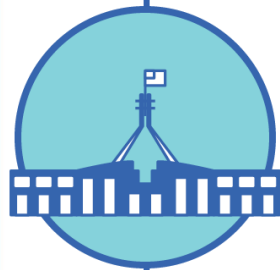
Data as at:
18 Nov 2021



38,238,948 total vaccine
doses administered nationally as at 18 November
+ 127,909 recorded in the last 24 hours



15,588,237
doses administered by state
and territory facilities
+ 38,754
recorded in the last 24 hours



22,650,711
doses administered by
commonwealth facilities
+ 89,155
recorded in the last 24 hours
21,560,576 total vaccine doses
administered in primary care settings
1,090,135 total vaccine doses
administered in aged care and disability
settings

NSW	Jurisdictions	Commonwealth
Cumulative	4,192,506	8,628,752
Daily increase	2,495	13,585

VIC	Jurisdictions	Commonwealth
Cumulative	4,710,922	5,792,823
Daily increase	5,624	19,668

QLD	Jurisdictions	Commonwealth
Cumulative	2,791,807	4,091,130
Daily increase	15,640	28,672

WA	Jurisdictions	Commonwealth
Cumulative	1,608,592	1,860,228
Daily increase	6,053	14,091

TAS	Jurisdictions	Commonwealth
Cumulative	443,349	368,727
Daily increase	53	2,184

SA	Jurisdictions	Commonwealth
Cumulative	1,153,137	1,292,248
Daily increase	6,406	8,540

ACT	Jurisdictions	Commonwealth
Cumulative	471,016	469,130
Daily increase	1,411	891

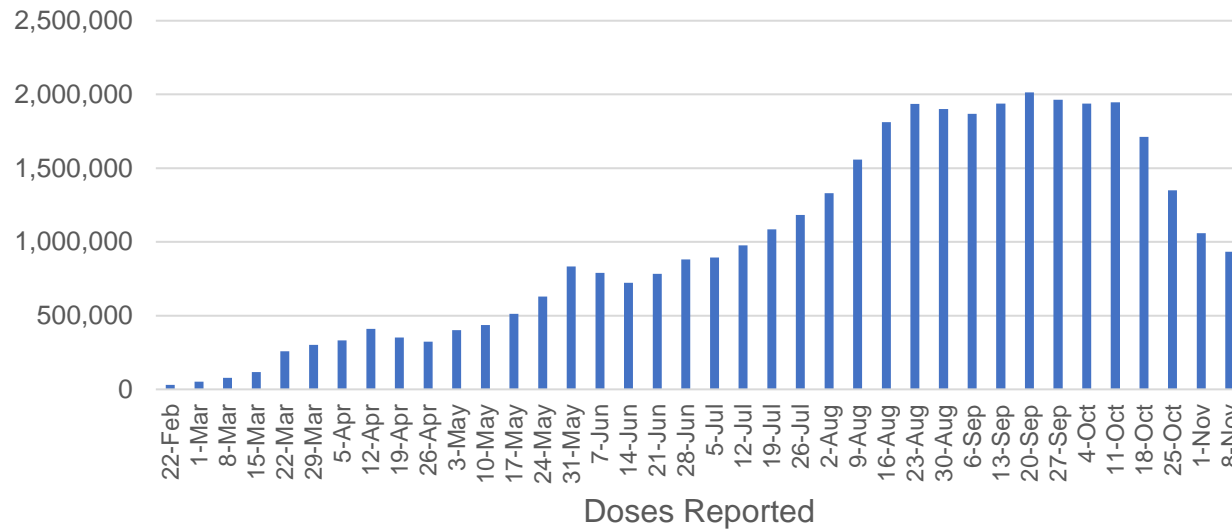
NT	Jurisdictions	Commonwealth
Cumulative	216,908	147,673
Daily increase	1,072	1,524

Vaccine milestone charts

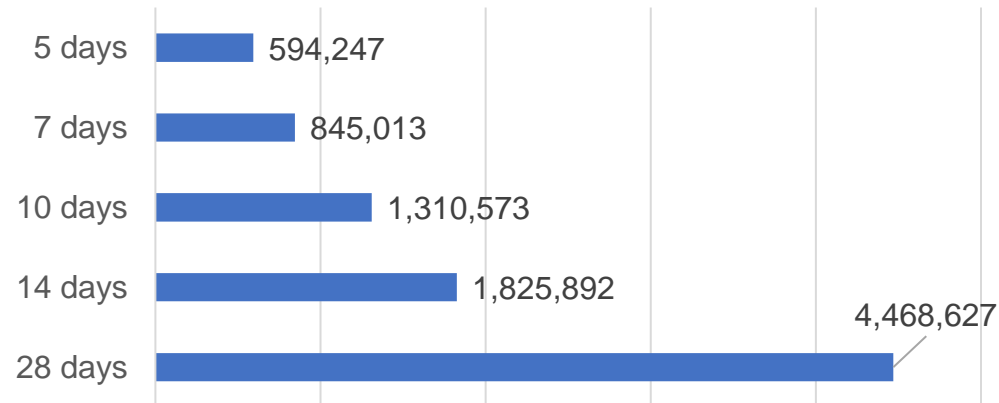
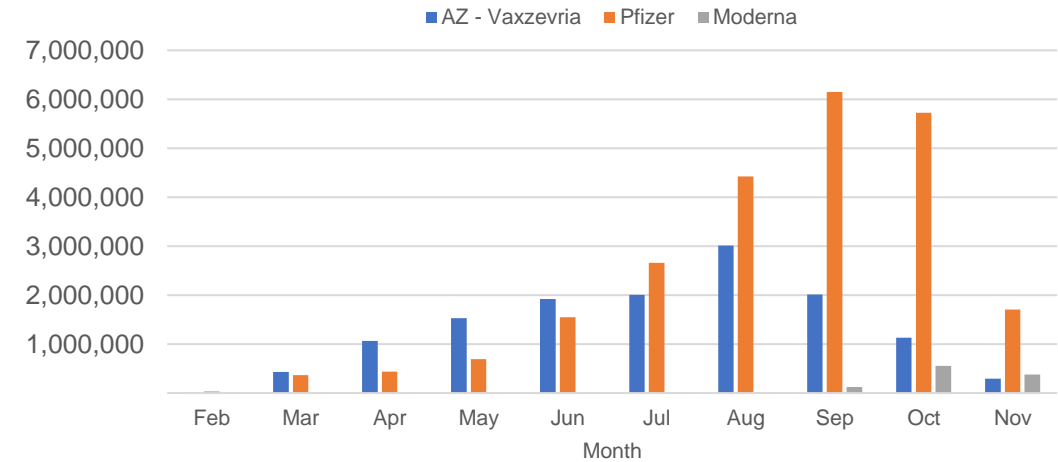
Data as at:
18 Nov 2021

Australia's COVID-19
Vaccine Roadmap

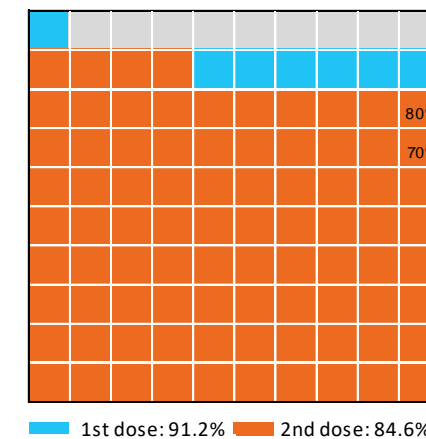
Doses Administered by Week



Doses by administration month and vaccine type



Eligible population percentage coverage



*Sourced from the Australian Immunisation Register.

*Each square represents 1% of the national population. Squares are filled as milestones are achieved.

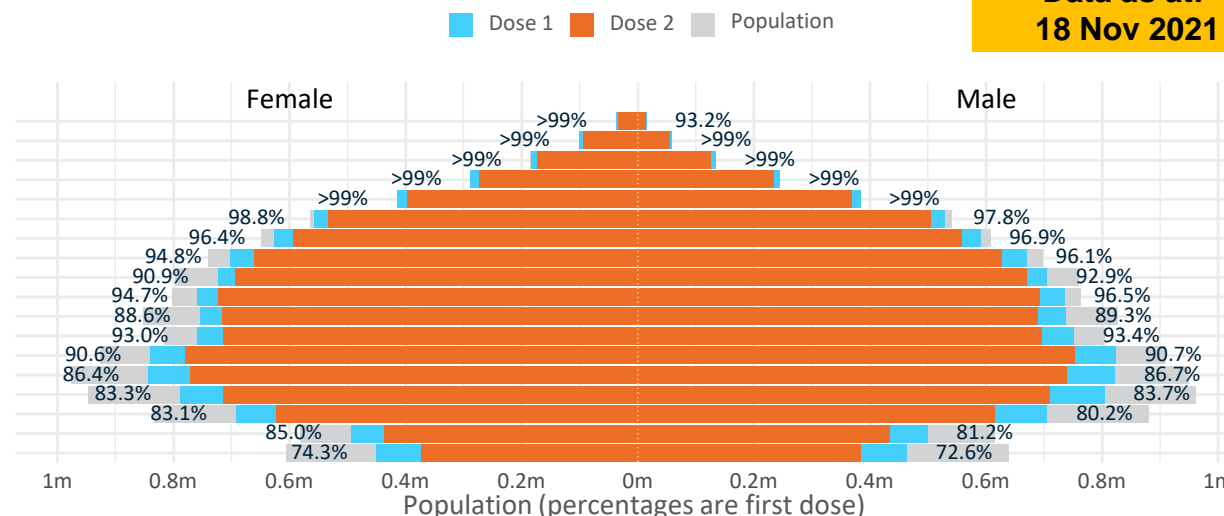
Doses by age and sex

First and second doses by age and sex

Australia's COVID-19
Vaccine Roadmap

Data as at:
18 Nov 2021

Age	Dose 1	Dose 2
95+	51,779 (97.9%)	46,759 (88.4%)
90-94	159,978 (>99%)	148,102 (93.5%)
85-89	318,329 (>99%)	298,927 (94.5%)
80-84	532,871 (>99%)	506,671 (95.9%)
75-79	797,945 (>99%)	764,125 (98.8%)
70-74	1,087,047 (98.4%)	1,038,951 (94.0%)
65-69	1,217,282 (96.7%)	1,152,530 (91.6%)
60-64	1,373,021 (95.6%)	1,290,009 (89.8%)
55-59	1,429,826 (91.9%)	1,364,225 (87.7%)
50-54	1,496,343 (95.6%)	1,417,317 (90.6%)
45-49	1,493,609 (89.1%)	1,405,014 (83.8%)
40-44	1,512,360 (93.3%)	1,411,441 (87.1%)
35-39	1,667,555 (90.9%)	1,533,995 (83.6%)
30-34	1,672,528 (86.9%)	1,514,953 (78.8%)
25-29	1,602,263 (84.0%)	1,429,896 (75.0%)
20-24	1,403,680 (82.0%)	1,242,318 (72.6%)
16-19	993,680 (83.1%)	870,082 (72.8%)
12-15	913,580 (73.4%)	757,113 (60.9%)



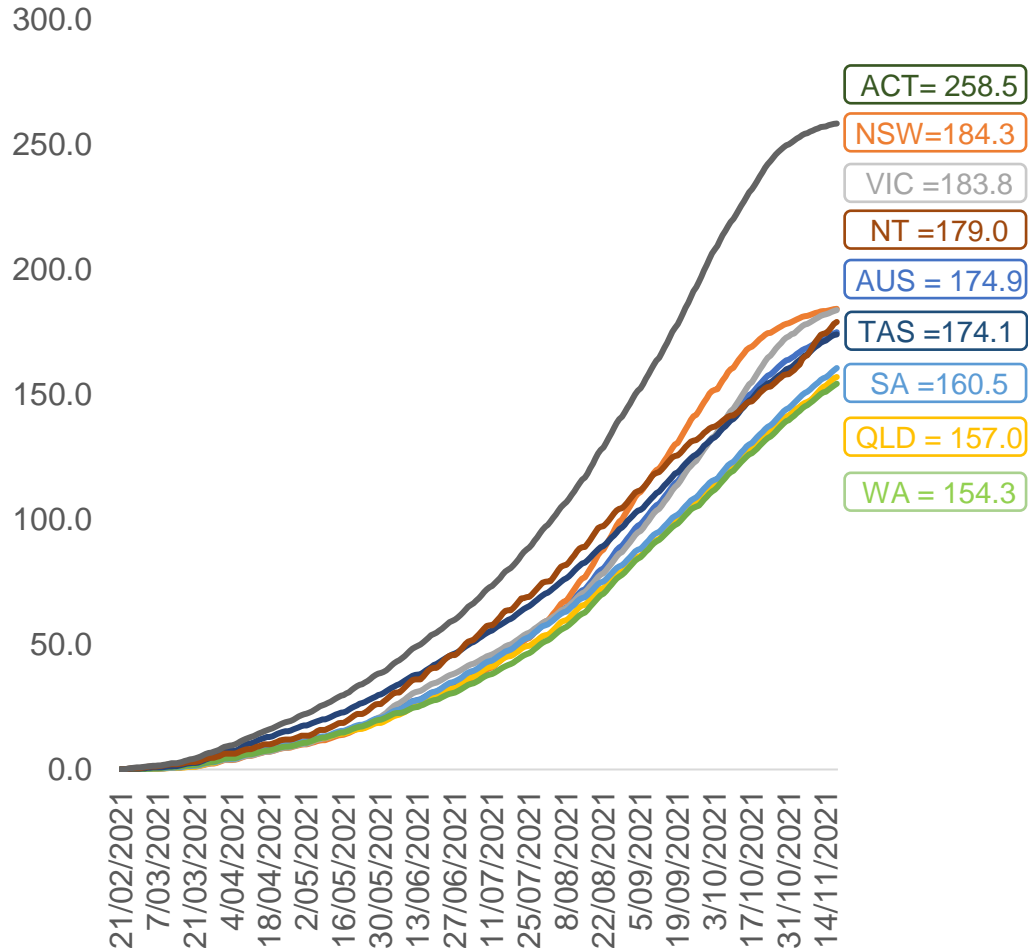
	AUS	ACT	NSW	NT	QLD	SA	TAS	VIC	WA
16 and over - dose 1	18,810,096	344,650	6,193,693	163,011	3,455,414	1,245,890	405,746	5,024,720	1,773,525
16 and over - dose 2	17,435,315	334,796	6,018,886	138,411	2,985,130	1,099,031	369,504	4,800,729	1,521,759
16 and over - population	20,619,959*	344,037	6,565,651	190,571	4,112,707	1,440,400	440,172	5,407,574	2,114,978
16 and over % with dose 1	91.22%	>99%	94.33%	85.54%	84.02%	86.50%	92.18%	92.92%	83.86%
16 and over % with dose 2	84.56%	97.31%	91.67%	72.63%	72.58%	76.30%	83.95%	88.78%	71.95%
50 and over - dose 1	8,464,421	133,421	2,761,326	55,281	1,633,043	632,120	210,083	2,160,830	821,920
50 and over - dose 2	8,027,616	130,273	2,698,556	50,256	1,501,708	578,070	195,595	2,080,677	744,411
50 and over - population	8,749,703	127,802	2,807,793	62,280	1,758,855	674,384	220,036	2,211,211	885,370
50 and over % with dose 1	96.74%	>99%	98.35%	88.76%	92.85%	93.73%	95.48%	97.72%	92.83%
50 and over % with dose 2	91.75%	>99%	96.11%	80.69%	85.38%	85.72%	88.89%	94.10%	84.08%
70 and over - dose 1	2,947,949	43,452	974,486	11,324	564,924	237,370	77,246	744,024	273,583
70 and over - dose 2	2,803,535	42,254	948,958	10,466	528,077	218,458	71,919	714,005	250,772
70 and over - population	2,934,706	39,946	962,606	12,343	577,767	240,514	77,155	743,519	280,281
70 and over % with dose 1	>99%	>99%	>99%	91.74%	97.78%	98.69%	>99%	>99%	97.61%
70 and over % with dose 2	95.53%	>99%	98.58%	84.79%	91.40%	90.83%	93.21%	96.03%	89.47%
12 to 15 - dose 1	913,580	19,606	315,707	8,750	163,485	50,989	17,978	259,926	70,327
12 to 15 - dose 2	757,113	18,580	292,475	6,303	114,885	33,919	13,180	228,186	44,823
12 to 15 - population	1,243,990	19,693	390,330	13,060	270,146	82,747	26,308	308,611	132,869
12 to 15 % with dose 1	73.44%	>99%	80.88%	67.00%	60.52%	61.62%	68.34%	84.22%	52.93%
12 to 15 % with dose 2	60.86%	94.35%	74.93%	48.26%	42.53%	40.99%	50.10%	73.94%	33.73%

*National population will not equal sum of listed jurisdictions due to a small number of people counted in national population residing in some 'other' territories. Sum of state doses will not add to national total as some records are unable to be geocoded to a State or Territory.

Doses sourced from Australian Immunisation Register, population from ABS ERP June 2020

Vaccinations by location

Cumulative total doses administered vs eligible state populations*

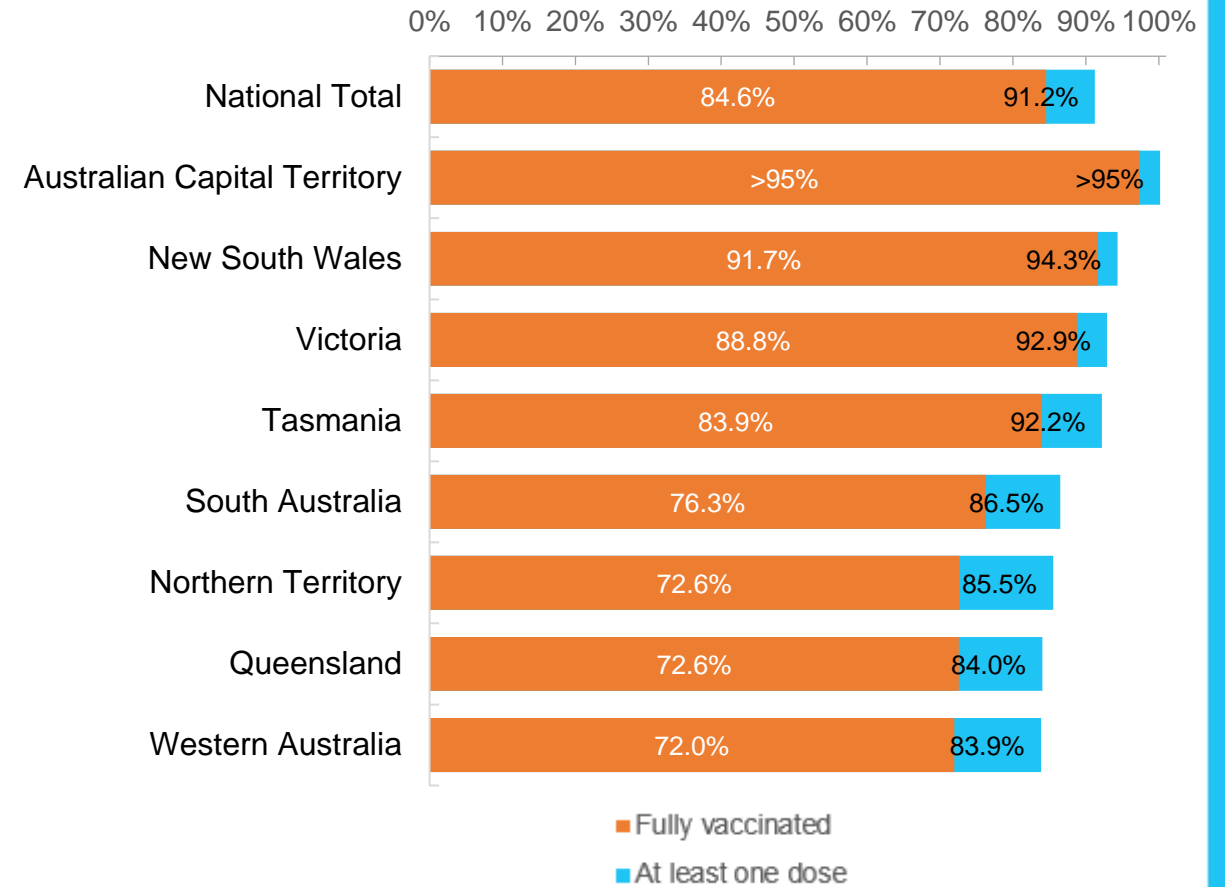


*Not an indication of percentage vaccinated, numbers will exceed 100 due to multiple doses required per person of the population. All doses are included, including those for the 12-15 cohort, and are based on vaccination provider location.

Data as at:
18 Nov 2021

Australia's COVID-19
Vaccine Roadmap

First and Second Doses by state of residence



Aboriginal and Torres Strait Islander peoples

Number of people vaccinated

Data as at:
16 Nov 2021
Updated weekly

Australia's COVID-19
Vaccine Roadmap



367,389

people over the age of 16
have had at least one dose

69.3%

of people over the age of 16
have had at least one dose



306,291

people over the age of 16
are fully vaccinated

57.6%

of people over the age of 16 are
fully vaccinated



**35,593
(49.6%)**

people aged 12-15 years
have had at least one dose

172 Aboriginal community controlled health services (ACCHS)

0#	50	26	40	12	3	21	18
ACT	NSW	NT	QLD	SA	TAS	VIC	WA

Medicare Address State ^{##}	Individuals Dose 1	Individuals Dose 1 %	Individuals Dose 2	Individuals Dose 2 %
Australian Capital Territory	4,848	89.2%	4,574	84.4%
New South Wales	135,005	84.3%	126,585	79.7%
Northern Territory	33,244	72.3%	24,396	52.8%
Queensland	86,682	60.0%	65,542	45.2%
South Australia	15,566	60.5%	12,064	46.7%
Tasmania	13,122	76.3%	11,510	66.6%
Victoria	34,740	85.9%	31,456	77.6%
Western Australia	32,058	49.9%	21,820	33.8%
Unknown/Other Territories	12,124	45.0%	8,344	30.8%
Totals	367,389	69.3%	306,291	57.6%

Source: Australian Immunisation Register

*Identifying as Aboriginal and Torres Strait Islander is optional and the estimated population may be under reported.

**Includes all Aboriginal and Torres Strait Islander peoples who have received a vaccination, not limited to those administered in an ACCHS setting

#ACCHS in the ACT are currently operating as a Commonwealth Vaccine Clinics so not included to avoid double counting

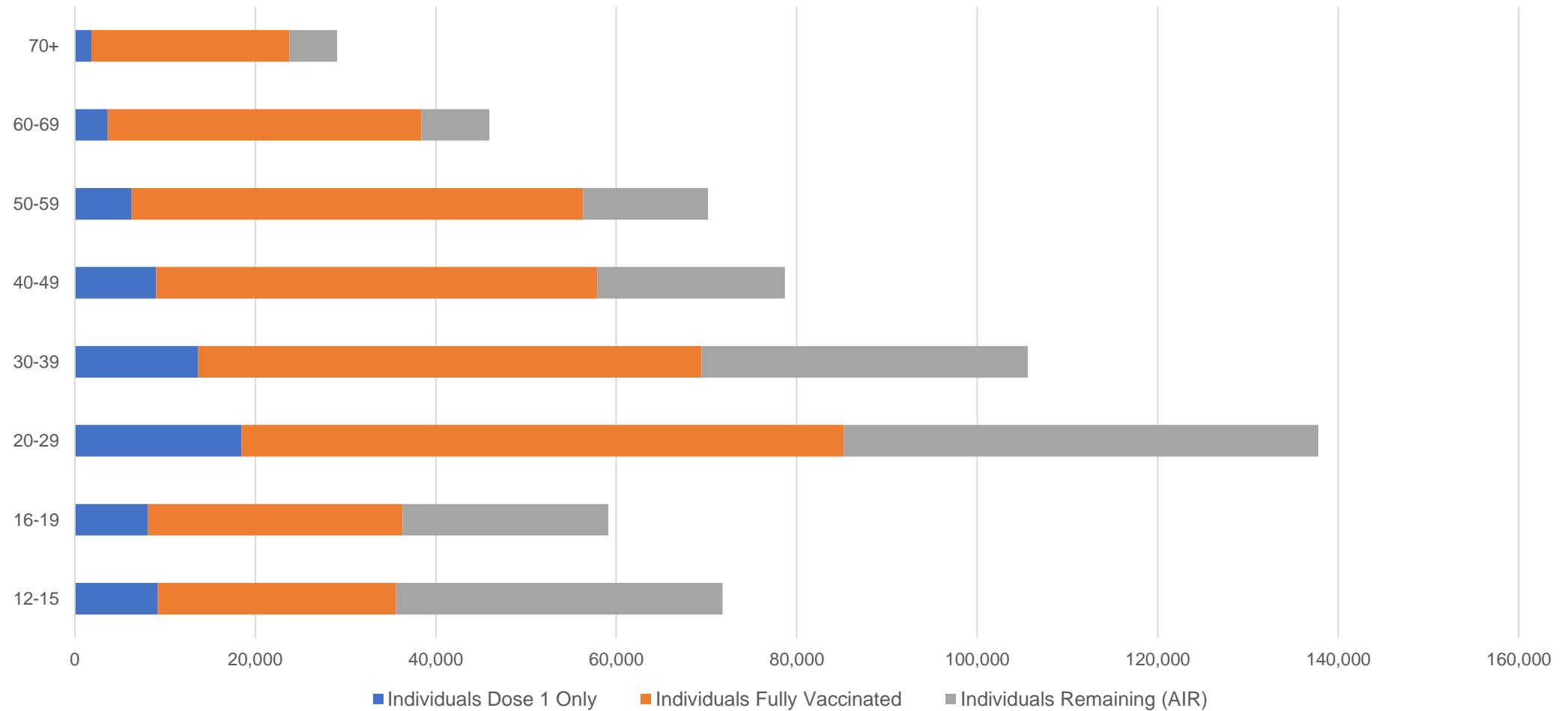
##The above table includes all identified Aboriginal and Torres Strait Islander people who are aged 16 and above by their state of residence.

Aboriginal and Torres Strait Islander peoples

Number of people vaccinated by age

Data as at:
16 Nov 2021
Updated weekly

Australia's COVID-19
Vaccine Roadmap



Source: Australian Immunisation Register

Data as at:
18 Nov 2021

Commonwealth primary care



Primary care vaccine administration sites

5,622	137	172	3,439
GPs	CVCs	ACCHS	Pharmacies



21,560,576 total vaccine doses administered
primary care settings as at 18 November
+ 85,593 recorded in the last 24 hours

Primary care vaccinations by provider type

	Doses administered	Daily increase	7 day increase
General Practice* includes other Commonwealth	19,418,061	58,965	372,431
Pharmacy	2,142,515	26,628	160,233



148,976 doses administered to persons residing in other territories or with missing residential information

*General practice includes Commonwealth Vaccination Clinics, Aboriginal Community Health Centres, Royal Flying Doctor Service and other Commonwealth vaccination facilities

Source: Australian Immunisation Register

Data as at:
18 Nov 2021

Commonwealth aged care and disability doses administered



1,090,135 (+ 3,562 last 24 hours)

Total vaccine doses administered in aged care and disability facilities as at 18 November

Number of doses administered as part of the Commonwealth aged and disability care rollout

NSW
516,225
(+825 daily increase)

VIC
202,661
(+506 daily increase)

QLD
164,219
(+857 daily increase)

WA
76,400
(+384 daily increase)

TAS
18,099
(+170 daily increase)

SA
66,687
(+523 daily increase)

ACT
13,745
(+85 daily increase)

NT
6,122
(+15 daily increase)

25,977

doses administered to persons
residing in other territories or with
missing residential information

*Sourced from the Australian Immunisation Register. Includes all persons vaccinated at participating residential aged care, disability and related industry settings.

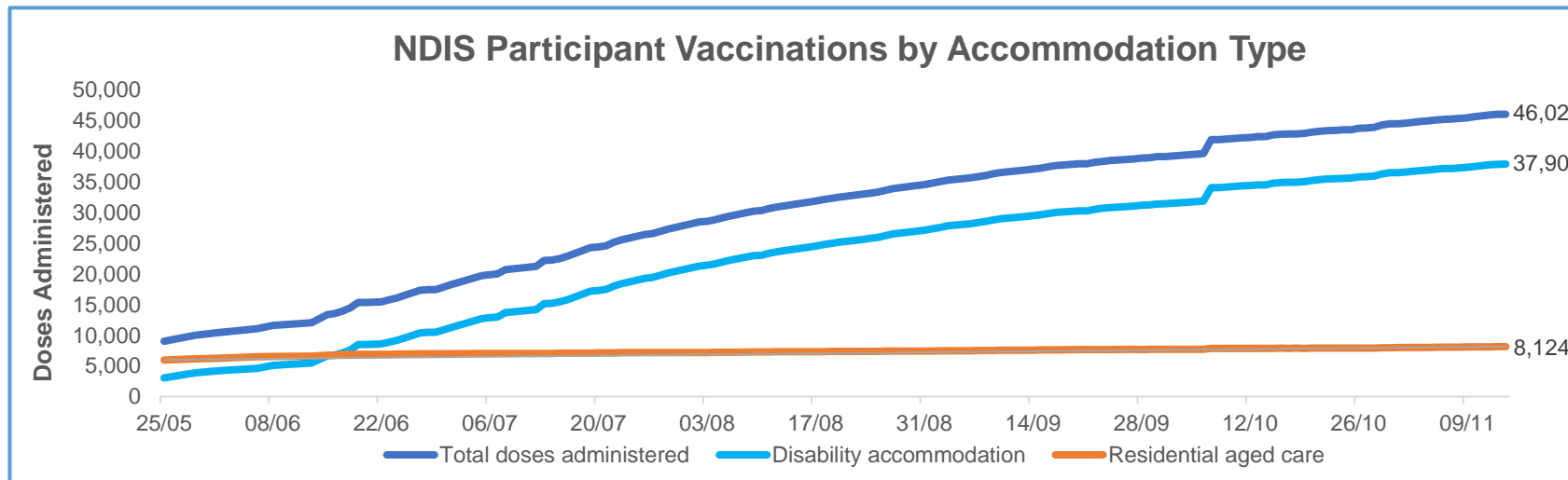
**State level breakdown indicates the residential location and may not align to the state in which the vaccination occurred.

Source: Australian Immunisation Register

Data as at:
15 Nov 2021*

Vaccination rate of people with disability and the disability workforce

Phase 1a – People with disability living in shared accommodation



	Total people with at least one dose	People fully vaccinated	Total number of individuals in cohort	Total doses administered	% People with at least one dose	% People fully vaccinated
NDIS participants living in shared accommodation **	23,650	22,378	27,603	46,028	85.7%	81.1%
NDIS screened workers ***	207,058	194,060	242,348	401,118	85.4%	80.1%



* Updates are available Monday to Friday on participants, and bi-weekly for workers, numbers may be up to four days old.

** Shared accommodation means two or more people with disability living in shared residential accommodation and NDIS participants living in Residential Aged Care accommodation as per the eligibility criteria of Phase 1a.

*** Total number of workers within the NDIS Commission Worker Screening database who have ever been successfully screened and linked to an NDIS registered provider or participant.

Source: Linkage between National Disability Insurance Agency data, NDIS Quality and Safeguards Commission data and the Australian Immunisation Register.

Residential aged care vaccination rollout

Residential aged care facilities status

100% Commonwealth facilities visited (2,554 planned sites)

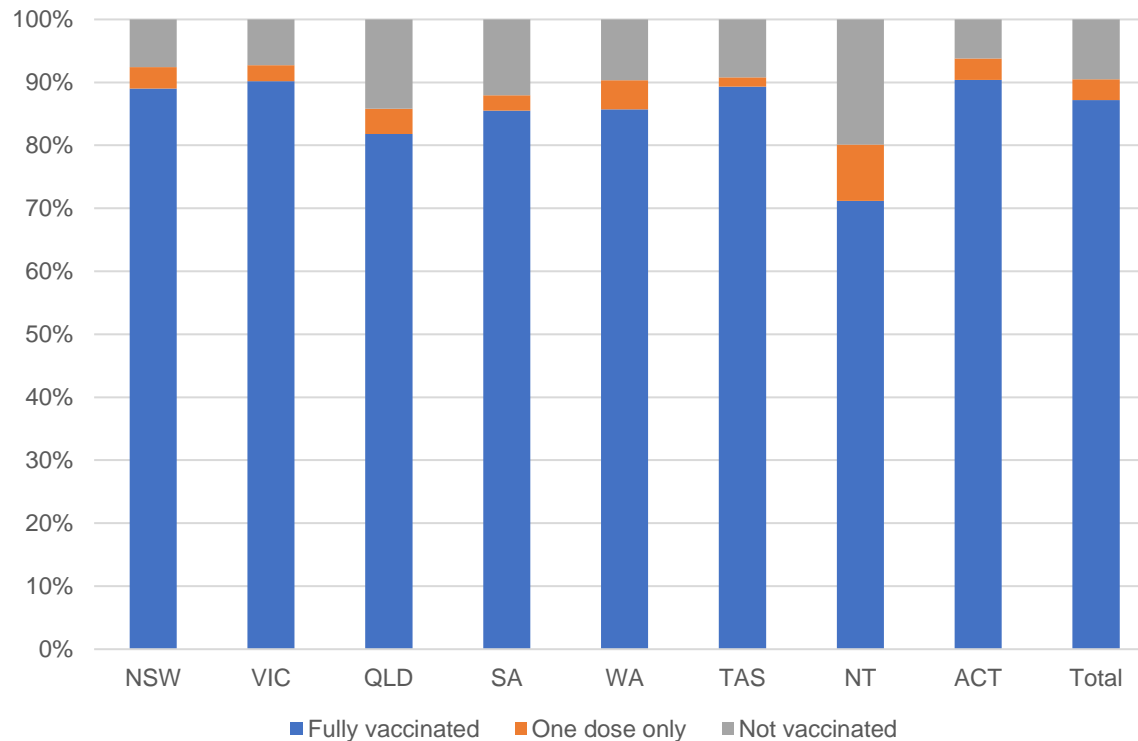
161,289 People fully vaccinated

167,416 People with at least one dose

Australia's COVID-19 Vaccine Roadmap

Data as at:
18 Nov 2021

Aged care resident vaccinations



Aged care worker vaccinations

Jurisdictions	Total workers with at least one dose	Workers fully vaccinated	% Workers with at least one dose	% Workers fully vaccinated
NSW	78,649	78,157	99.4%	98.8%
VIC	70,642	69,774	99.6%	98.3%
QLD	48,815	47,667	99.8%	97.5%
SA	27,445	26,605	100.0%	96.9%
WA	23,536	22,856	100.0%	97.1%
TAS	7,654	7,401	100.0%	96.7%
NT	820	817	99.5%	99.2%
ACT	2,962	2,933	100.0%	99.0%
Total	260,523	256,210	99.7%	98.0%

Source: My Aged Care Portal staff vaccination progress

**Resident vaccination information is reported manually by service providers

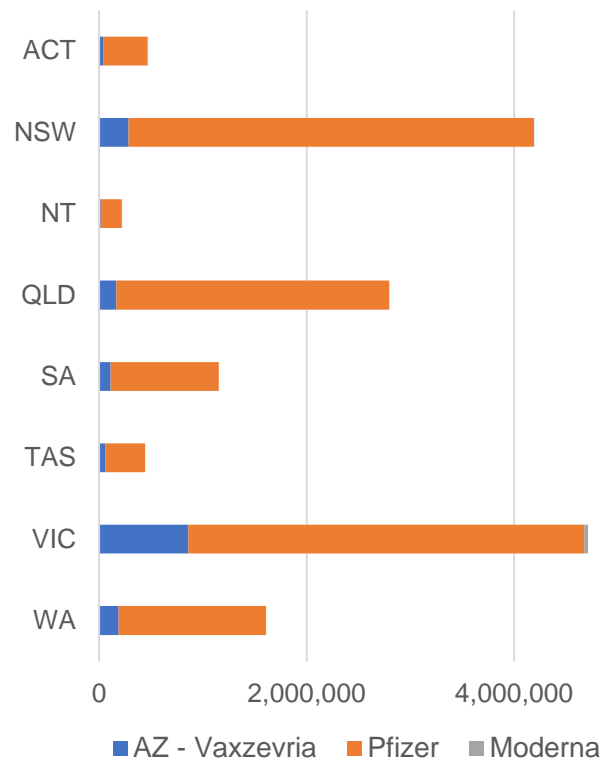
*Status updates are provided by facilities at least once per week. Reporting is updated Monday to Friday to encompass different facility updates being made on different days.

Data is sourced directly from Aged Care Service Providers and is not drawn or closely aligned with data from AIR due to inconsistencies and potential lags in uploading of records.

Data as at:
18 Nov 2021

Jurisdiction administered

Total vaccine doses administered in State and Territory clinics as at 18 November



15,588,237 total vaccine doses administered
in State and Territory clinics as at 18 November
+ **38,754** recorded in the last 24 hours
+ **293,240** recorded in the last 7 days

NSW
4,192,506
(+2,495 daily increase)

VIC
4,710,922
(+5,624 daily increase)

QLD
2,791,807
(+15,640 daily increase)

WA
1,608,592
(+6,053 daily increase)

TAS
443,349
(+53 daily increase)

SA
1,153,137
(+6,406 daily increase)

ACT
471,016
(+1,411 daily increase)

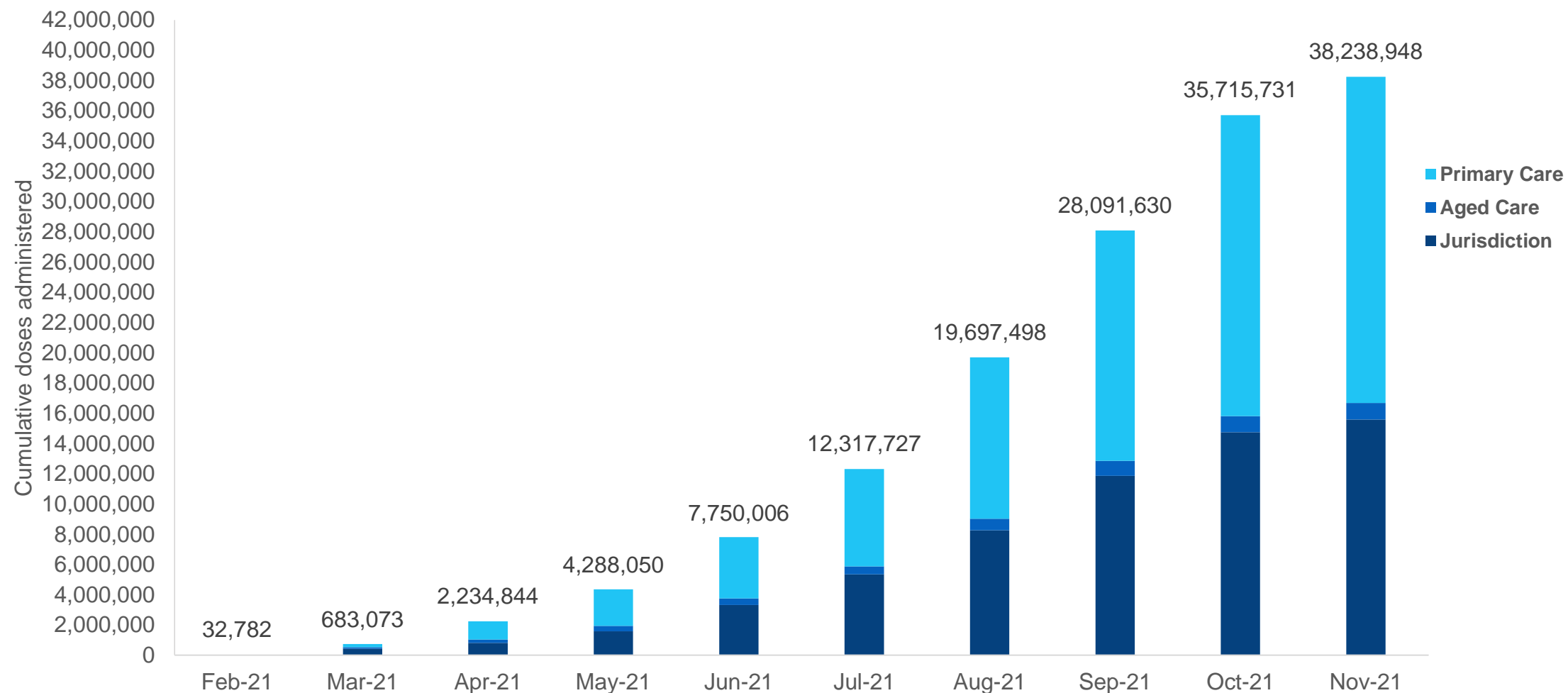
NT
216,908
(+1,072 daily increase)

*Sourced from the Australian Immunisation Register and self-reported data. Numbers are calculated as difference in daily cumulative reported numbers to allow for historical corrections in all self-reported data sources.

Cumulative doses administered by channel

Data as at:
18 Nov 2021

Australia's COVID-19
Vaccine Roadmap



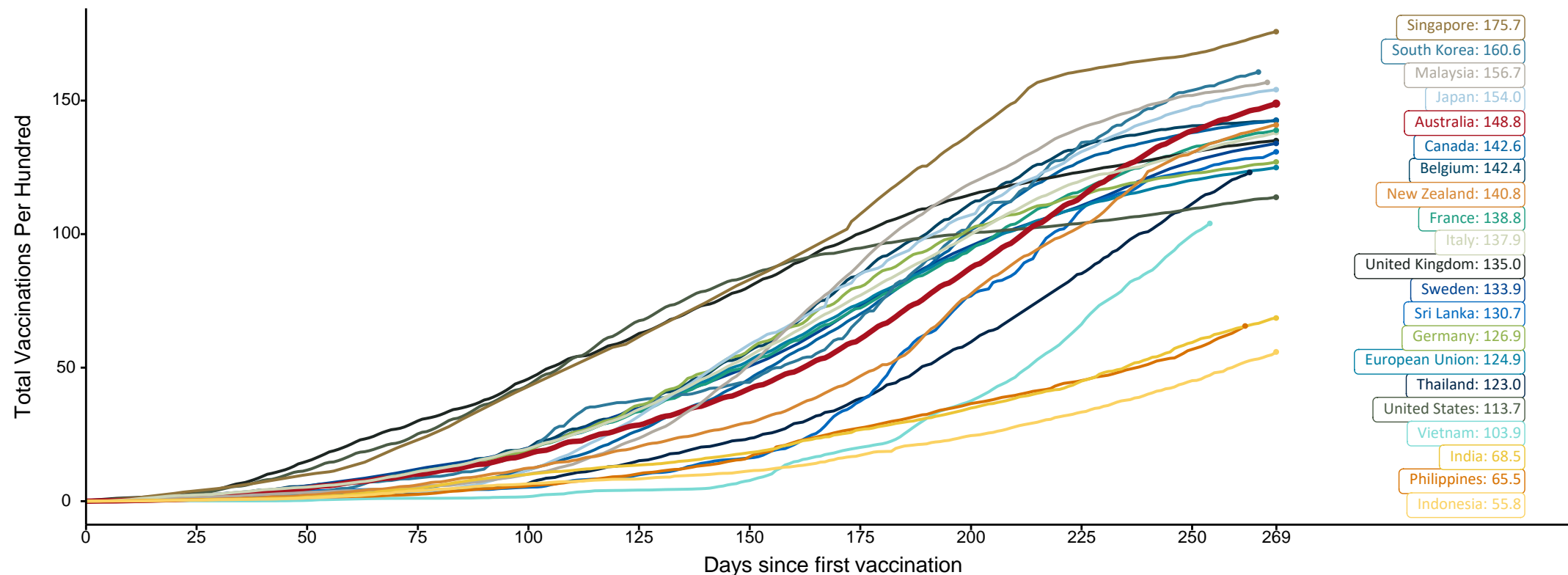
Source: Australian Immunisation Register

Doses at equivalent stages of rollout (Day 269)

Data as at:
18 Nov 2021

The x-axis is truncated at the length of Australia's vaccination program. Countries with intermittent reporting have had their doses per 100 imputed to Australia's current stage of rollout. Israel excluded as it is beyond scale of the graph

Cumulative doses administered (18 Nov): **38,238,948**

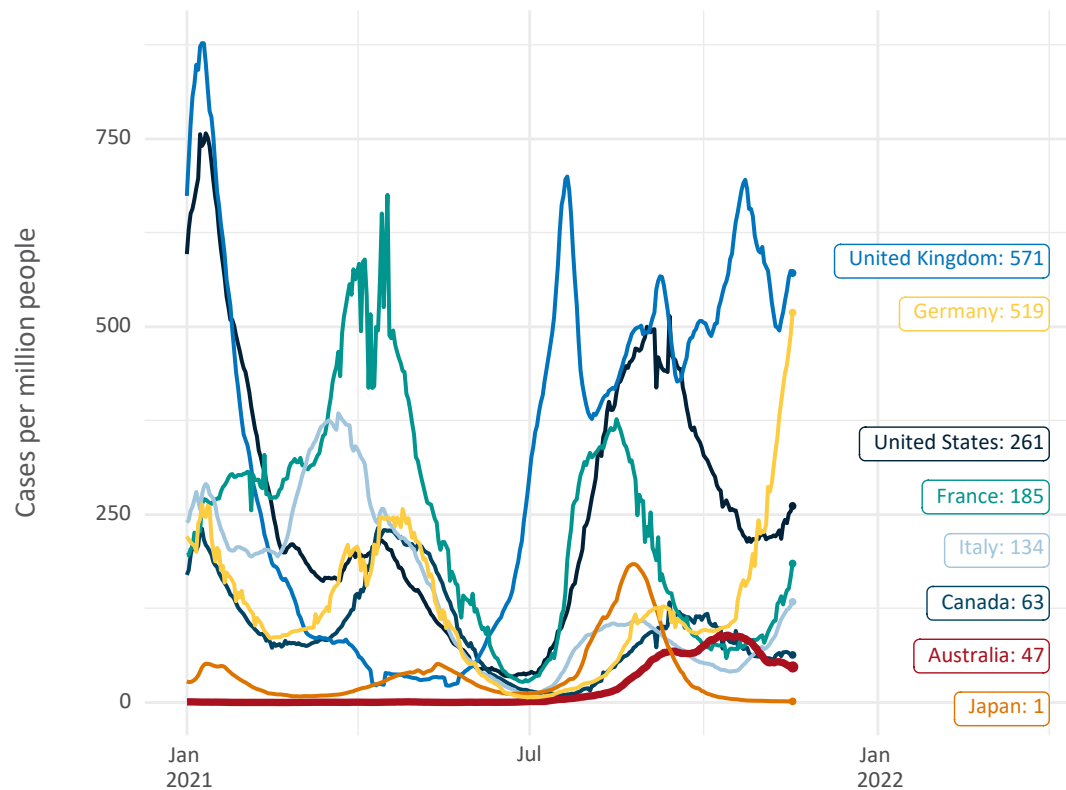


Note: From 15 September 2021, data for Australia includes all doses administered to people 12 and over. Prior to 15 September, data was for 16 and over
Source: Department of Health (Australia), Our World in Data (international)
Latest data: 18 November

International data – COVID-19

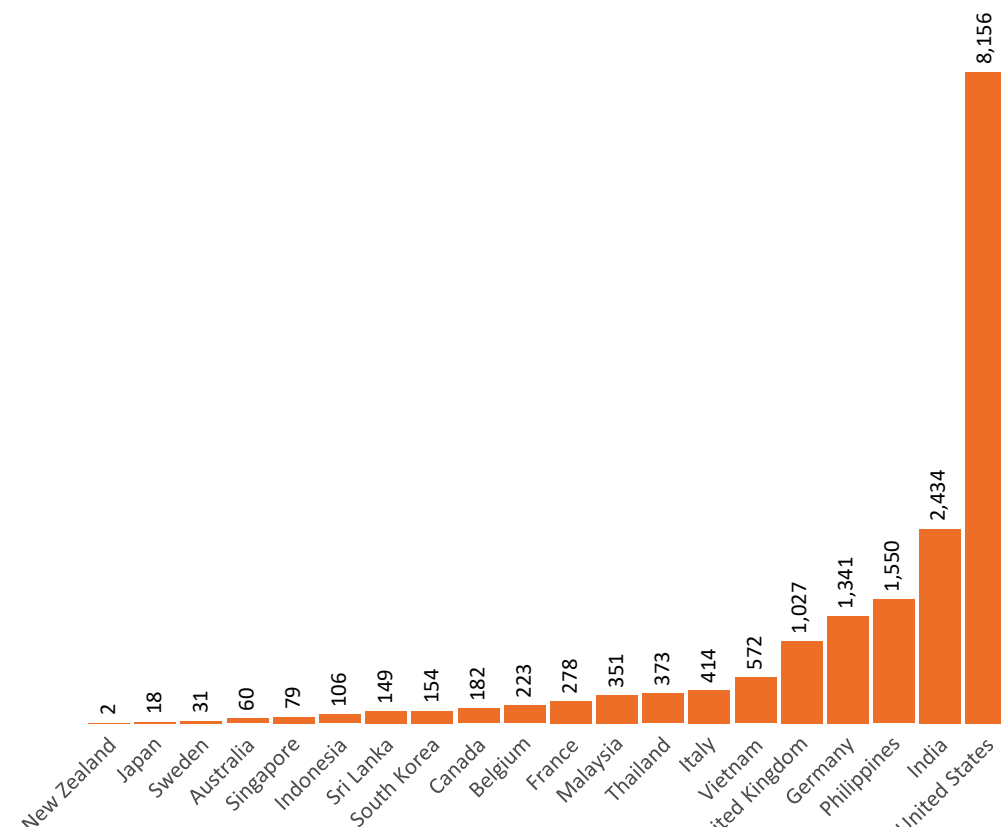
Data as at:
18 Nov 2021

New daily cases per million in 2021, Australia and G7 countries
Smoothed - 7 day average



Source: OWID
Data downloaded: 19 Nov 2021 08:19
Latest data: 17 Nov 2021

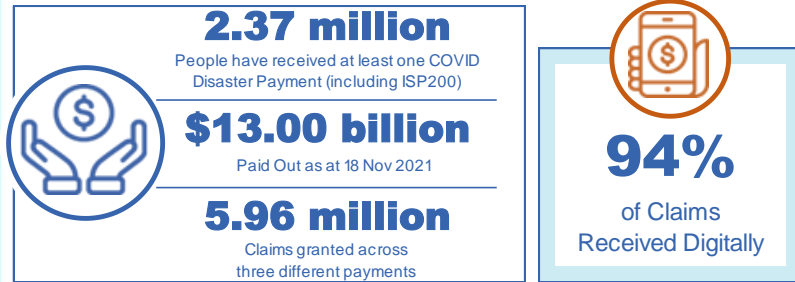
COVID-19 deaths in past 7 days - Australia and select countries



Source: OWID
Data downloaded: 19 Nov 2021 08:19
Latest data: 17 Nov 2021

Data as at midnight:
18 Nov 2021

Pandemic Response Payments (Current)



COVID Disaster Payment:	5.76 million claims received - 2.19 million individuals paid a total of \$12.54 billion.
\$200 Income Support Payment:	349,000 claims received - 183,000 individuals paid a total of \$268.41 million.
Pandemic Leave Disaster Payment:	134,000 claims received - 114,000 individuals paid a total of \$187.13 million.

CURRENT COVID-19 DISASTER PAYMENTS



**THREE
PAYMENTS
AVAILABLE**

COVID Disaster Payment

assisting during a lockdown event in a Commonwealth hotspot.

Income Support Payment \$200

for income support recipients who lost at least 8 hours of work.

Pandemic Leave Disaster Payment

for those who have to self-isolate, quarantine or care.

For more information visit:
servicesaustralia.gov.au

New South Wales

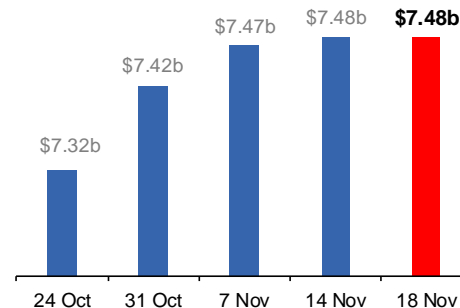
Lockdown from 24 Jun to 10 Oct
Claiming period ends 27 Nov

1.08m people have received at least one COVID Disaster Payment.

\$7.48b paid out as at 18 Nov 2021.

\$9m paid in initial and reoccurring payments in the week ending 14 Nov 2021.

Cumulative payments made by State since activation on 1 Jul 2021.



Victoria

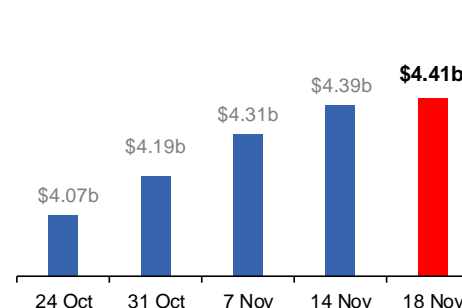
Lockdown (#6) since 6 Aug to 28 Oct
Claiming period ends 9 Dec

744,000 people have received at least one COVID Disaster Payment.

\$4.41b paid out as at 18 Nov 2021.

\$82m paid in initial and reoccurring payments in the week ending 14 Nov 2021.

Cumulative payments made by State since activation on 8 Jun 2021.



Australian Capital Territory

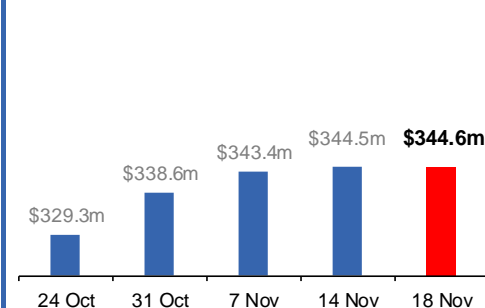
Lockdown since 12 Aug to 14 Oct
Claiming period ends 25 Nov

65,000 people have received at least one COVID Disaster Payment.

\$344.6m paid out as at 18 Nov 2021.

\$1.0m paid in initial and reoccurring payments in the week ending 14 Nov 2021.

Cumulative payments made by State since activation on 20 Aug 2021.



Northern Territory

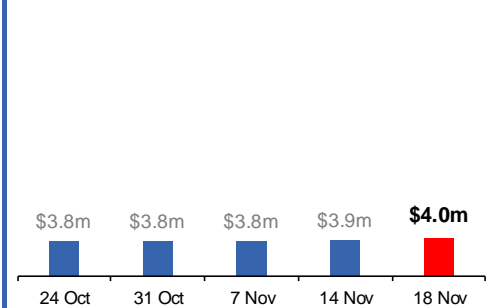
Lockdown (#2) from 5 Nov to 7 Nov
Claiming period ends 2 Dec

6,100 people have received at least one COVID Disaster Payment.

\$4.0m paid out as at 18 Nov 2021.

\$133,000 paid in initial payments in the week ending 14 Nov 2021.

Cumulative payments made by State since activation on 25 Aug 2021.



Pandemic Response Payments (Closed Events)

Data as at midnight:
18 Nov 2021

CLOSED COVID-19 DISASTER PAYMENTS

