



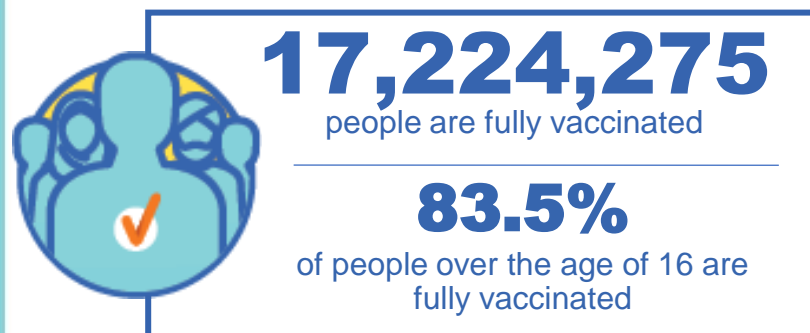
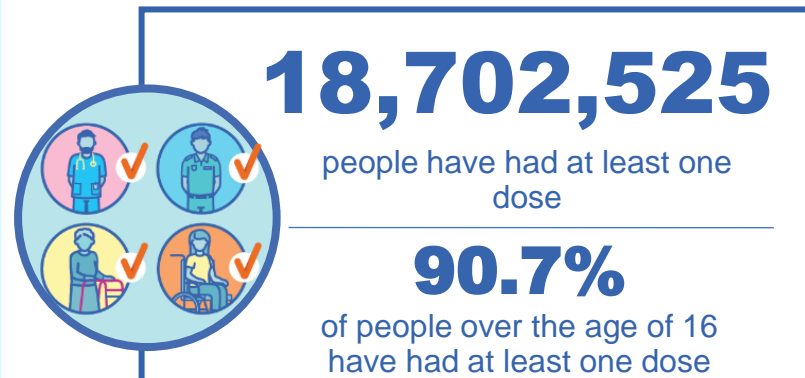
**Australian Government**  
**Operation COVID Shield**

# COVID-19 Vaccine Roll-out

16 November 2021

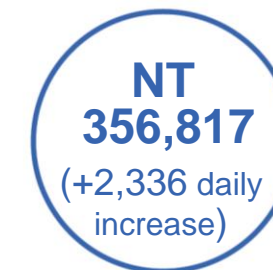
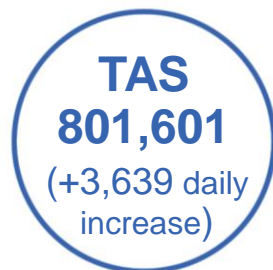
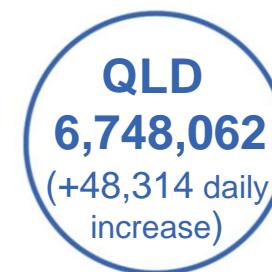
Data as at:  
15 Nov 2021

## Total vaccine doses



**37,846,128** total vaccine  
doses administered nationally as at 15 November

**+140,067** recorded in the last 24 hours



\*Administration state breakdown indicates state in which a vaccine was administered

\*\*Overall dose count includes instances of more than two doses per person in a small number of cases.

Source: Australian Immunisation Register

Data as at:  
15 Nov 2021

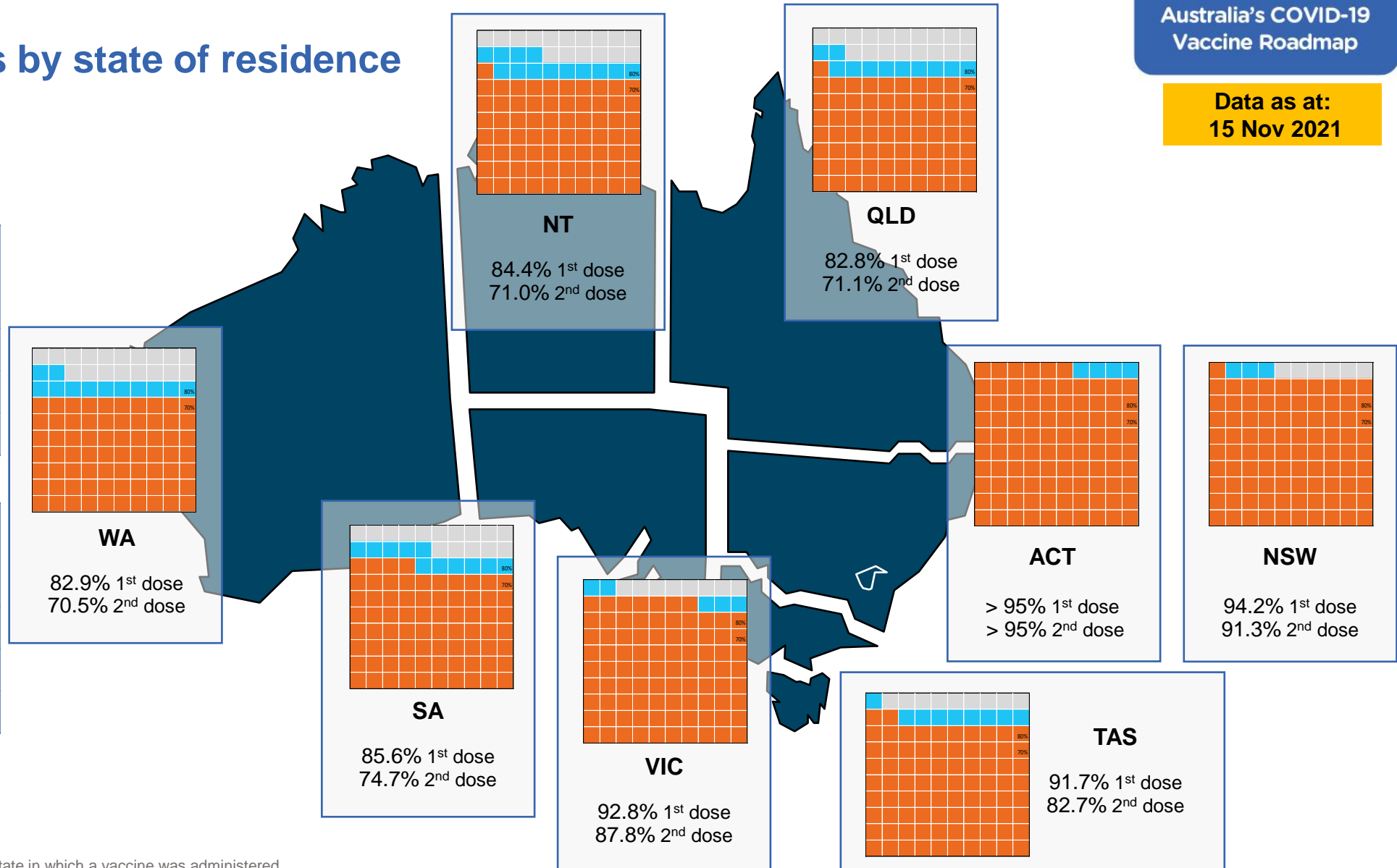
## Vaccinations by state of residence

### First doses

Age	Today	4 weeks ago	8 weeks ago
16+	90.7%	85.6%	73.8%
50+	>95%	93.7%	87.5%
70+	>95%	>95%	94.2%

### Fully vaccinated

Age	Today	4 weeks ago	8 weeks ago
16+	83.5%	69.9%	48.6%
50+	90.9%	81.2%	67.7%
70+	94.7%	86.7%	76.4%



\*Residential state may differ from the state in which a vaccine was administered

## Commonwealth and Jurisdiction vaccine doses administered

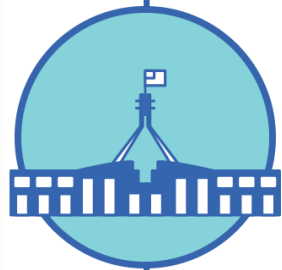
Data as at:  
15 Nov 2021



**37,846,128** total vaccine  
doses administered nationally as at 15 November  
**+ 140,067** recorded in the last 24 hours



**15,472,170**  
doses administered by state  
and territory facilities  
**+ 43,610**  
recorded in the last 24 hours



**22,373,958**  
doses administered by  
commonwealth facilities  
**+ 96,457**  
recorded in the last 24 hours

**21,293,486** total vaccine doses  
administered in primary care settings  
**1,080,472** total vaccine doses  
administered in aged care and disability  
settings

NSW	Jurisdictions	Commonwealth
Cumulative	4,184,113	8,585,518
Daily increase	3,174	15,975

VIC	Jurisdictions	Commonwealth
Cumulative	4,692,302	5,733,485
Daily increase	7,207	22,611

QLD	Jurisdictions	Commonwealth
Cumulative	2,749,396	3,998,666
Daily increase	17,119	31,195

WA	Jurisdictions	Commonwealth
Cumulative	1,591,518	1,818,524
Daily increase	6,050	14,305

TAS	Jurisdictions	Commonwealth
Cumulative	440,290	361,311
Daily increase	1,239	2,400

SA	Jurisdictions	Commonwealth
Cumulative	1,134,598	1,266,597
Daily increase	6,218	7,717

ACT	Jurisdictions	Commonwealth
Cumulative	466,662	466,331
Daily increase	1,440	1,081

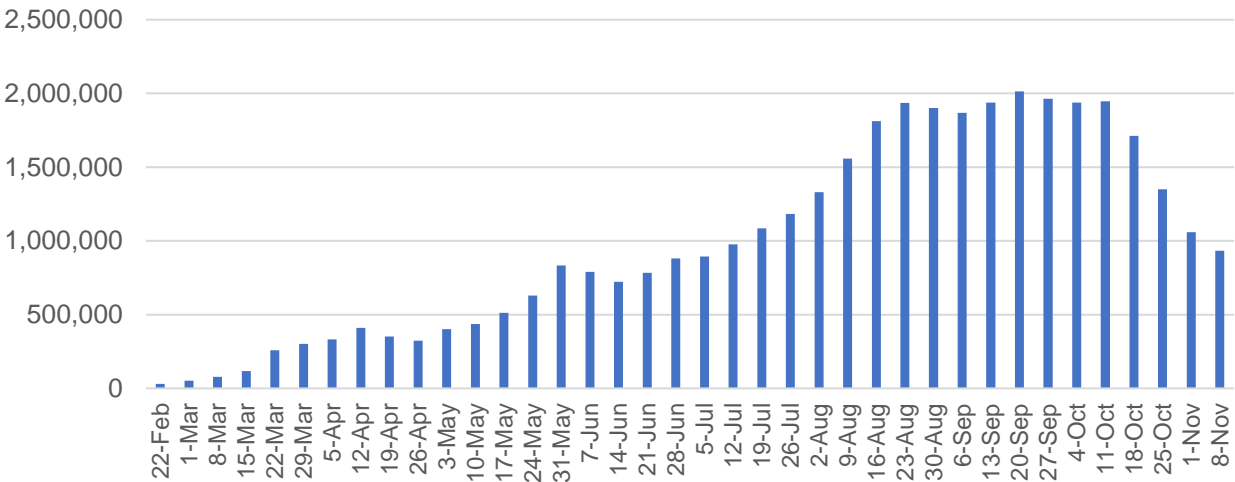
NT	Jurisdictions	Commonwealth
Cumulative	213,291	143,526
Daily increase	1,163	1,173

# Vaccine milestone charts

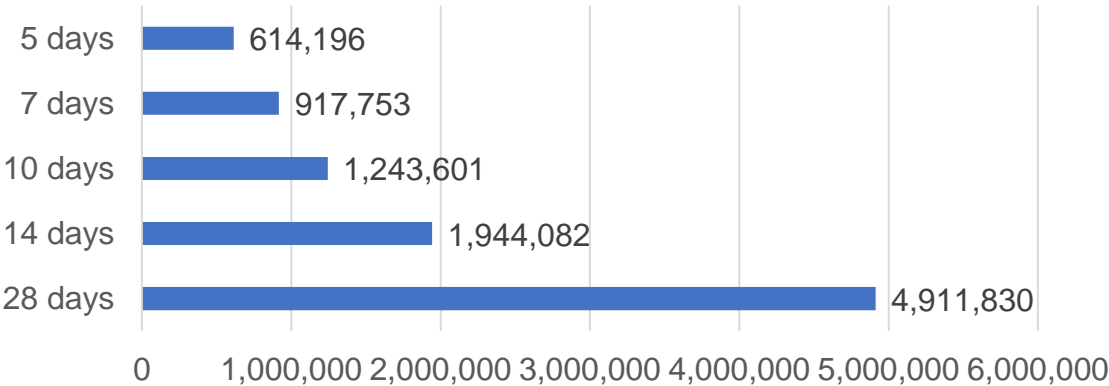
Data as at:  
15 Nov 2021

Australia's COVID-19  
Vaccine Roadmap

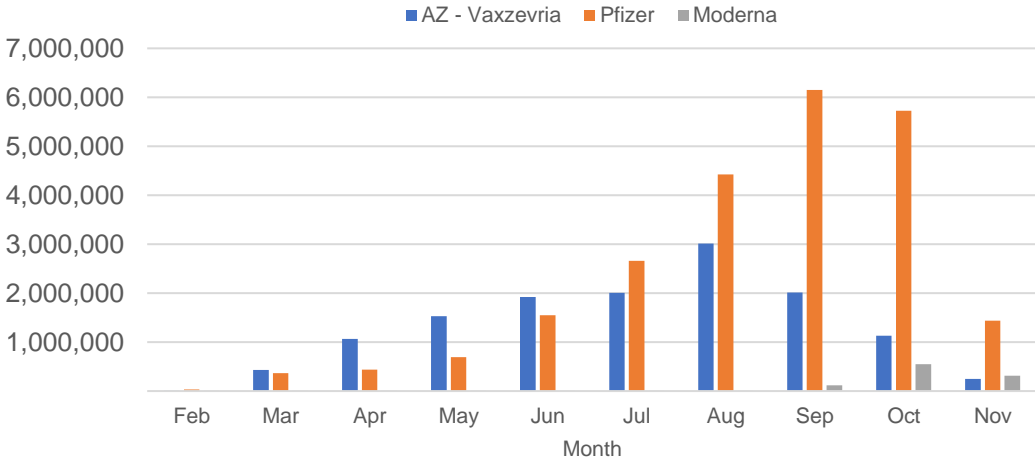
Doses Administered by Week



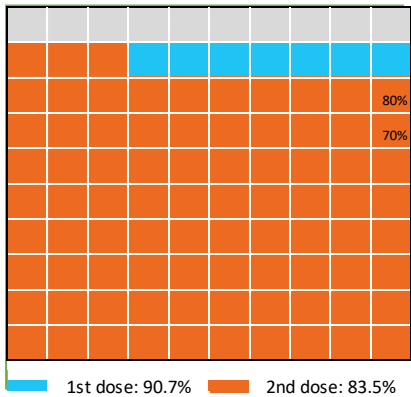
Doses Reported



Doses by administration month and vaccine type



Eligible population percentage coverage



\*Sourced from the Australian Immunisation Register.

\*Each square represents 1% of the national population.  
Squares are filled as milestones are achieved.

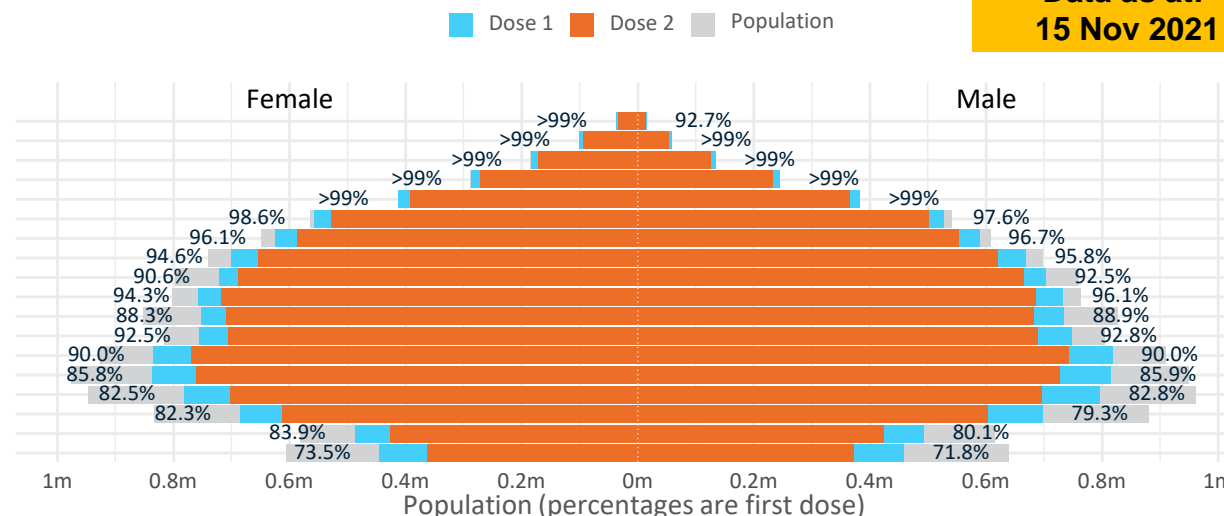
# Doses by age and sex

First and second doses by age and sex

Australia's COVID-19  
Vaccine Roadmap

Data as at:  
15 Nov 2021

Age	Dose 1	Dose 2
95+	51,540 (97.4%)	46,287 (87.5%)
90-94	159,475 (>99%)	146,737 (92.6%)
85-89	317,452 (>99%)	296,083 (93.6%)
80-84	531,524 (>99%)	502,229 (95.0%)
75-79	795,971 (>99%)	757,350 (97.9%)
70-74	1,085,355 (98.2%)	1,030,162 (93.2%)
65-69	1,214,643 (96.5%)	1,140,057 (90.6%)
60-64	1,369,234 (95.3%)	1,274,031 (88.7%)
55-59	1,425,364 (91.6%)	1,353,218 (87.0%)
50-54	1,490,326 (95.3%)	1,404,450 (89.8%)
45-49	1,486,775 (88.7%)	1,391,369 (83.0%)
40-44	1,503,860 (92.8%)	1,396,375 (86.2%)
35-39	1,656,389 (90.3%)	1,513,932 (82.5%)
30-34	1,659,144 (86.2%)	1,493,315 (77.6%)
25-29	1,586,617 (83.2%)	1,406,410 (73.8%)
20-24	1,388,250 (81.1%)	1,220,767 (71.3%)
16-19	980,606 (82.0%)	851,503 (71.2%)
12-15	903,267 (72.6%)	734,339 (59.0%)



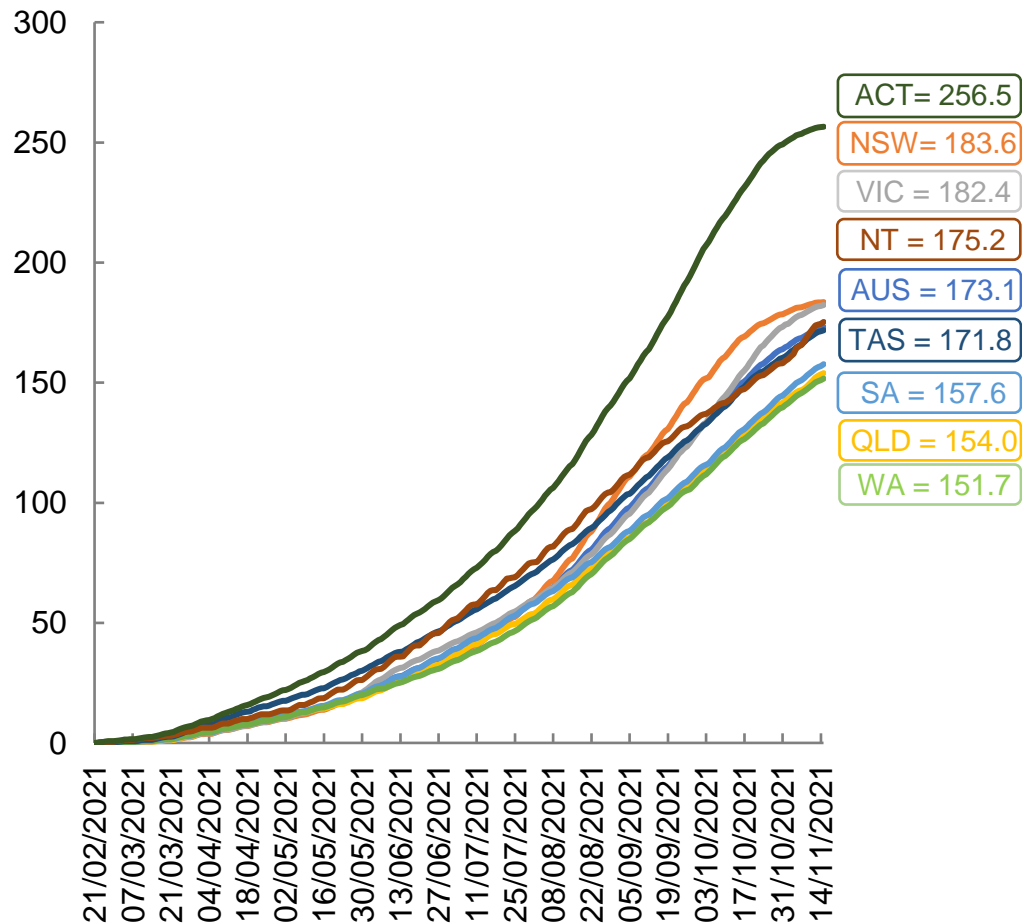
	AUS	ACT	NSW	NT	QLD	SA	TAS	VIC	WA
16 and over - dose 1	18,702,525	344,255	6,186,837	160,805	3,403,461	1,233,603	403,488	5,017,128	1,754,015
16 and over - dose 2	17,224,275	332,949	5,991,536	135,262	2,922,920	1,075,508	363,814	4,750,217	1,490,552
16 and over - population	20,619,959*	344,037	6,565,651	190,571	4,112,707	1,440,400	440,172	5,407,574	2,114,978
16 and over % with dose 1	90.70%	>99%	94.23%	84.38%	82.75%	85.64%	91.67%	92.78%	82.93%
16 and over % with dose 2	83.53%	96.78%	91.26%	70.98%	71.07%	74.67%	82.65%	87.84%	70.48%
50 and over - dose 1	8,440,884	133,296	2,759,005	54,869	1,623,825	629,069	209,426	2,158,072	818,134
50 and over - dose 2	7,950,604	129,654	2,686,944	49,488	1,480,331	568,438	193,249	2,062,010	734,035
50 and over - population	8,749,703	127,802	2,807,793	62,280	1,758,855	674,384	220,036	2,211,211	885,370
50 and over % with dose 1	96.47%	>99%	98.26%	88.10%	92.32%	93.28%	95.18%	97.60%	92.41%
50 and over % with dose 2	90.87%	>99%	95.70%	79.46%	84.16%	84.29%	87.83%	93.25%	82.91%
70 and over - dose 1	2,941,317	43,395	973,462	11,244	562,931	236,568	77,048	742,745	272,742
70 and over - dose 2	2,778,848	42,050	944,561	10,335	522,268	215,118	71,111	707,351	247,884
70 and over - population	2,934,706	39,946	962,606	12,343	577,767	240,514	77,155	743,519	280,281
70 and over % with dose 1	>99%	>99%	>99%	91.10%	97.43%	98.36%	>99%	>99%	97.31%
70 and over % with dose 2	94.69%	>99%	98.13%	83.73%	90.39%	89.44%	92.17%	95.14%	88.44%
12 to 15 - dose 1	903,267	19,598	314,932	8,374	159,572	49,307	17,645	258,828	68,433
12 to 15 - dose 2	734,339	18,407	288,431	5,919	108,945	31,438	12,482	221,942	42,287
12 to 15 - population	1,243,990	19,693	390,330	13,060	270,146	82,747	26,308	308,611	132,869
12 to 15 % with dose 1	72.61%	>99%	80.68%	64.12%	59.07%	59.59%	67.07%	83.87%	51.50%
12 to 15 % with dose 2	59.03%	93.47%	73.89%	45.32%	40.33%	37.99%	47.45%	71.92%	31.83%

\*National population will not equal sum of listed jurisdictions due to a small number of people counted in national population residing in some 'other' territories. Sum of state doses will not add to national total as some records are unable to be geocoded to a State or Territory.

Doses sourced from Australian Immunisation Register, population from ABS ERP June 2020

# Vaccinations by location

Cumulative total doses administered vs eligible state populations\*

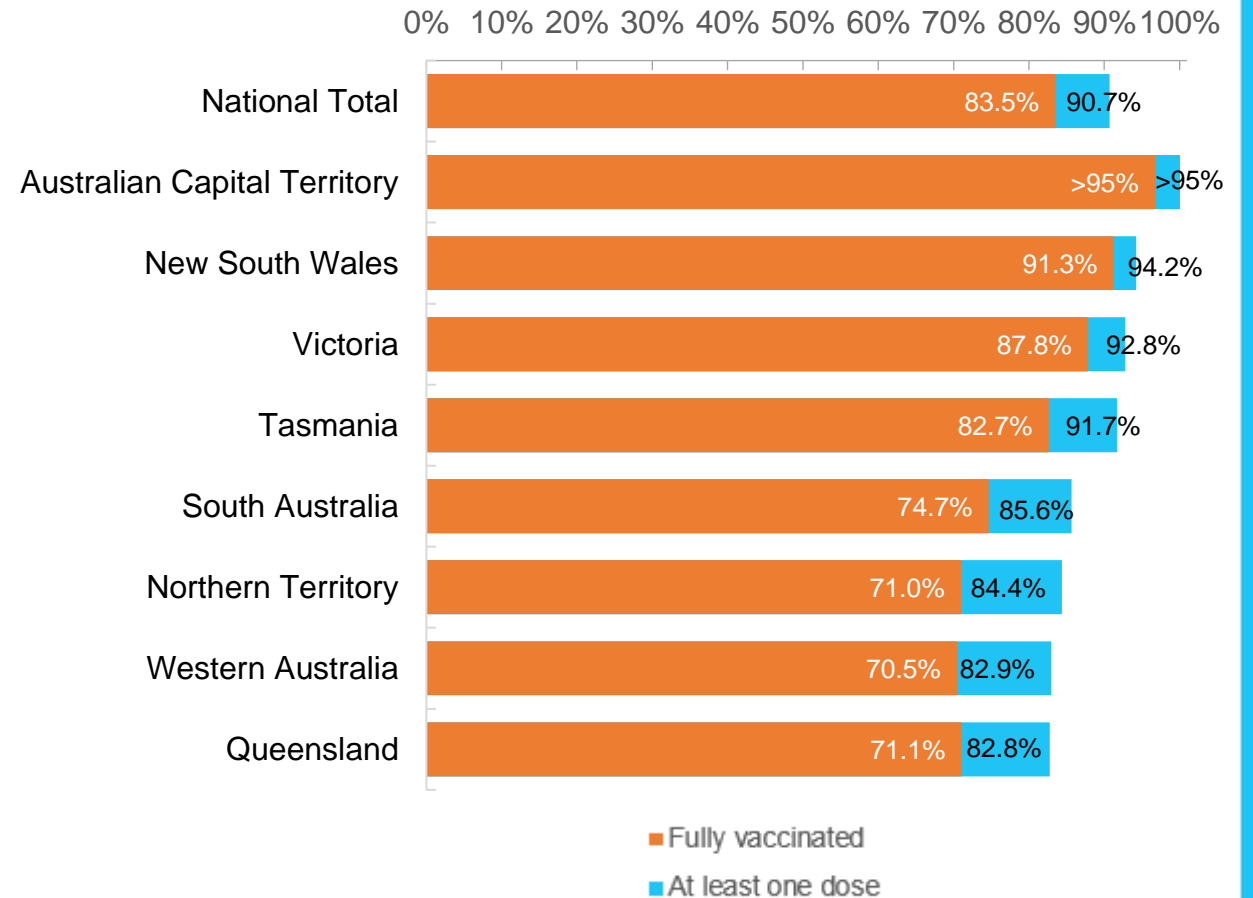


\*Not an indication of percentage vaccinated, numbers will exceed 100 due to multiple doses required per person of the population. All doses are included, including those for the 12-15 cohort, and are based on vaccination provider location.

Data as at:  
15 Nov 2021

Australia's COVID-19  
Vaccine Roadmap

First and Second Doses by state of residence



# Aboriginal and Torres Strait Islander peoples

## Number of people vaccinated

Data as at:  
09 Nov 2021  
Updated weekly

Australia's COVID-19  
Vaccine Roadmap



**352,289**

people over the age of 16  
have had at least one dose

**67.0%**

of people over the age of 16  
have had at least one dose



**291,171**

people over the age of 16  
are fully vaccinated

**55.3%**

of people over the age of 16 are  
fully vaccinated



**33,540  
(46.7%)**

people aged 12-15 years  
have had at least one dose

## 172 Aboriginal community controlled health services (ACCHS)

0#	50	26	40	12	3	21	18
<b>ACT</b>	<b>NSW</b>	<b>NT</b>	<b>QLD</b>	<b>SA</b>	<b>TAS</b>	<b>VIC</b>	<b>WA</b>

Medicare Address State <sup>##</sup>	Individuals Dose 1	Individuals Dose 1 %	Individuals Dose 2	Individuals Dose 2 %
Unknown	11,049	41.4%	7,527	28.1%
Australian Capital Territory	4,807	88.6%	4,498	82.7%
New South Wales	133,749	83.6%	123,270	76.9%
Northern Territory	30,991	67.5%	22,567	48.9%
Other Territories	148	91.1%	142	87.5%
Queensland	79,840	55.1%	61,183	42.1%
South Australia	14,809	57.5%	11,272	43.6%
Tasmania	12,821	74.7%	10,858	62.8%
Victoria	34,253	84.9%	29,810	73.6%
Western Australia	29,822	46.4%	20,044	31.0%
<b>Totals</b>	<b>352,289</b>	<b>67.0%</b>	<b>291,171</b>	<b>55.3%</b>

\*Identifying as Aboriginal and Torres Strait Islander is optional and the estimated population may be under reported.

\*\*Includes all Aboriginal and Torres Strait Islander peoples who have received a vaccination, not limited to those administered in an ACCHS setting

#ACCHS in the ACT are currently operating as a Commonwealth Vaccine Clinics so not included to avoid double counting

##The above table includes all identified Aboriginal and Torres Strait Islander people who are aged 16 and above by their state of residence.

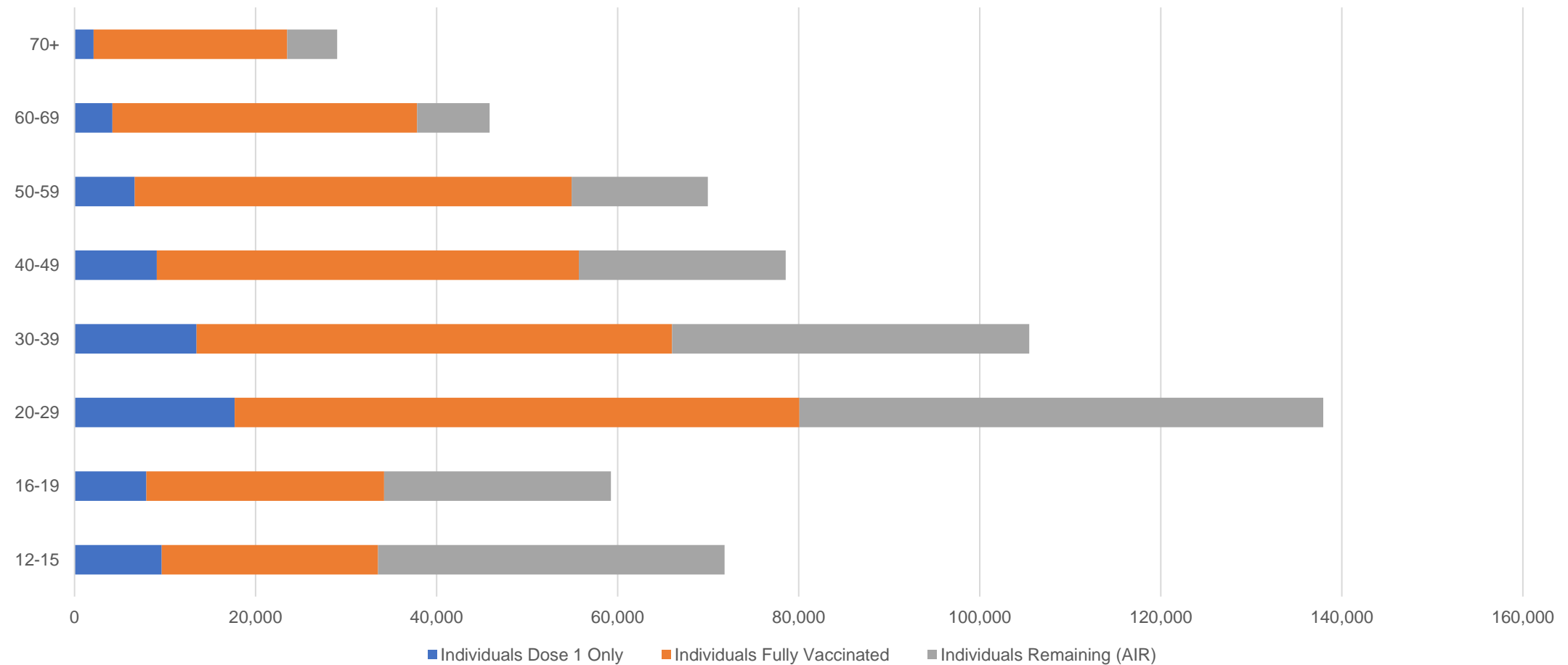


# Aboriginal and Torres Strait Islander peoples

## Number of people vaccinated by age

Data as at:  
09 Nov 2021  
Updated weekly

Australia's COVID-19  
Vaccine Roadmap



Source: Australian Immunisation Register

Data as at:  
15 Nov 2021

# Commonwealth primary care



## Primary care vaccine administration sites

<b>5,622</b>	<b>137</b>	<b>172</b>	<b>3,439</b>
GPs	CVCs	ACCHS	Pharmacies



**21,293,486** total vaccine doses administered  
primary care settings as at 15 November  
**+ 94,383** recorded in the last 24 hours

## Primary care vaccinations by provider type

	Doses administered	Daily increase	7 day increase
General Practice* includes other Commonwealth	19,231,478	65,553	409,541
Pharmacy	2,062,008	28,830	173,592



**142,316** doses administered to persons  
residing in other territories or with  
missing residential information

\*General practice includes Commonwealth Vaccination Clinics, Aboriginal Community Health Centres, Royal Flying Doctor Service and other Commonwealth vaccination facilities

Source: Australian Immunisation Register

Data as at:  
15 Nov 2021

# Commonwealth aged care and disability doses administered



**1,080,472** (+ 2,074 last 24 hours)

Total vaccine doses administered in aged care and disability facilities as at 15 November

Number of doses administered as part of the Commonwealth aged and disability care rollout

**NSW**  
**514,310**  
(+3 daily increase)

**VIC**  
**200,900**  
(+154 daily increase)

**QLD**  
**161,632**  
(+1,210 daily increase)

**WA**  
**75,258**  
(+269 daily increase)

**TAS**  
**17,675**  
(+5 daily increase)

**SA**  
**65,644**  
(+262 daily increase)

**ACT**  
**13,543**  
(+21 daily increase)

**NT**  
**6,082**  
(+15 daily increase)

**25,428**

doses administered to persons  
residing in other territories or with  
missing residential information

\*Sourced from the Australian Immunisation Register. Includes all persons vaccinated at participating residential aged care, disability and related industry settings.

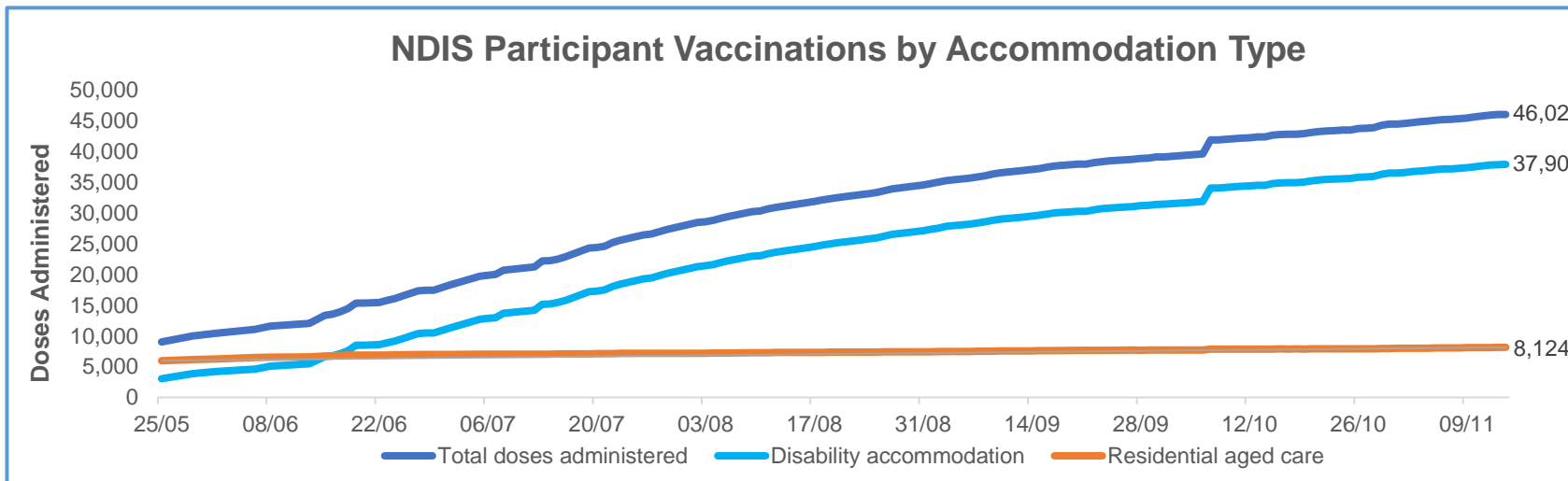
\*\*State level breakdown indicates the residential location and may not align to the state in which the vaccination occurred.

Source: Australian Immunisation Register

Data as at:  
15 Nov 2021\*

# Vaccination rate of people with disability and the disability workforce

## Phase 1a – People with disability living in shared accommodation



	Total people with at least one dose	People fully vaccinated	Total number of individuals in cohort	Total doses administered	% People with at least one dose	% People fully vaccinated
NDIS participants living in shared accommodation **	23,650	22,378	27,603	46,028	85.7%	81.1%
NDIS screened workers ***	207,058	194,060	242,348	401,118	85.4%	80.1%



\* Updates are available Monday to Friday on participants, and bi-weekly for workers, numbers may be up to four days old.

\*\* Shared accommodation means two or more people with disability living in shared residential accommodation and NDIS participants living in Residential Aged Care accommodation as per the eligibility criteria of Phase 1a.

\*\*\* Total number of workers within the NDIS Commission Worker Screening database who have ever been successfully screened and linked to an NDIS registered provider or participant.

Source: Linkage between National Disability Insurance Agency data, NDIS Quality and Safeguards Commission data and the Australian Immunisation Register.

## Residential aged care vaccination rollout

### Residential aged care facilities status

**100%** Commonwealth facilities visited (2,553 planned sites)

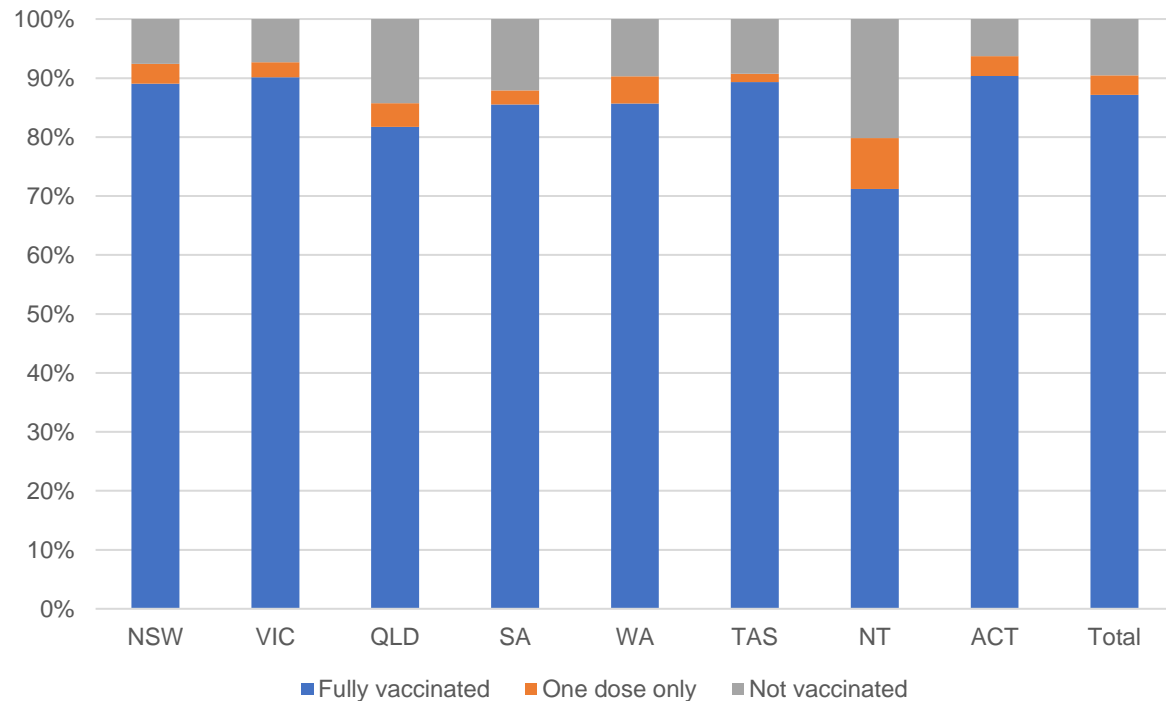
**161,189** People fully vaccinated

**167,317** People with at least one dose

Australia's COVID-19 Vaccine Roadmap

Data as at:  
15 Nov 2021

### Aged care resident vaccinations



### Aged care worker vaccinations

Jurisdictions	Total workers with at least one dose	Workers fully vaccinated	% Workers with at least one dose	% Workers fully vaccinated
NSW	78,709	77,791	99.7%	98.6%
VIC	71,285	68,765	99.8%	96.2%
QLD	48,648	47,417	99.9%	97.3%
SA	27,435	26,337	100.0%	96.0%
WA	23,692	22,258	99.9%	93.9%
TAS	7,660	7,336	100.0%	95.8%
NT	822	817	99.5%	98.9%
ACT	2,959	2,897	99.9%	97.8%
<b>Total</b>	<b>261,210</b>	<b>253,618</b>	<b>99.8%</b>	<b>96.9%</b>

Source: My Aged Care Portal staff vaccination progress

\*\*Resident vaccination information is reported manually by service providers

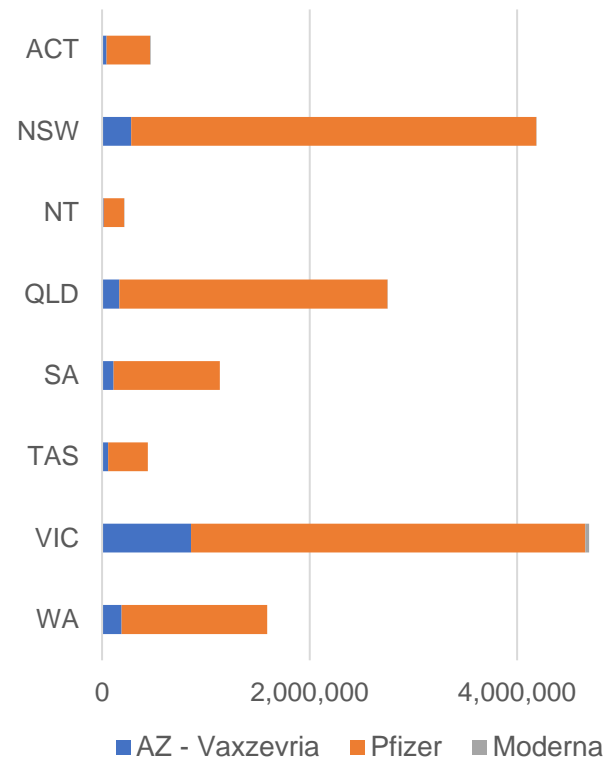
\*Status updates are provided by facilities at least once per week. Reporting is updated Monday to Friday to encompass different facility updates being made on different days.

Data is sourced directly from Aged Care Service Providers and is not drawn or closely aligned with data from AIR due to inconsistencies and potential lags in uploading of records.

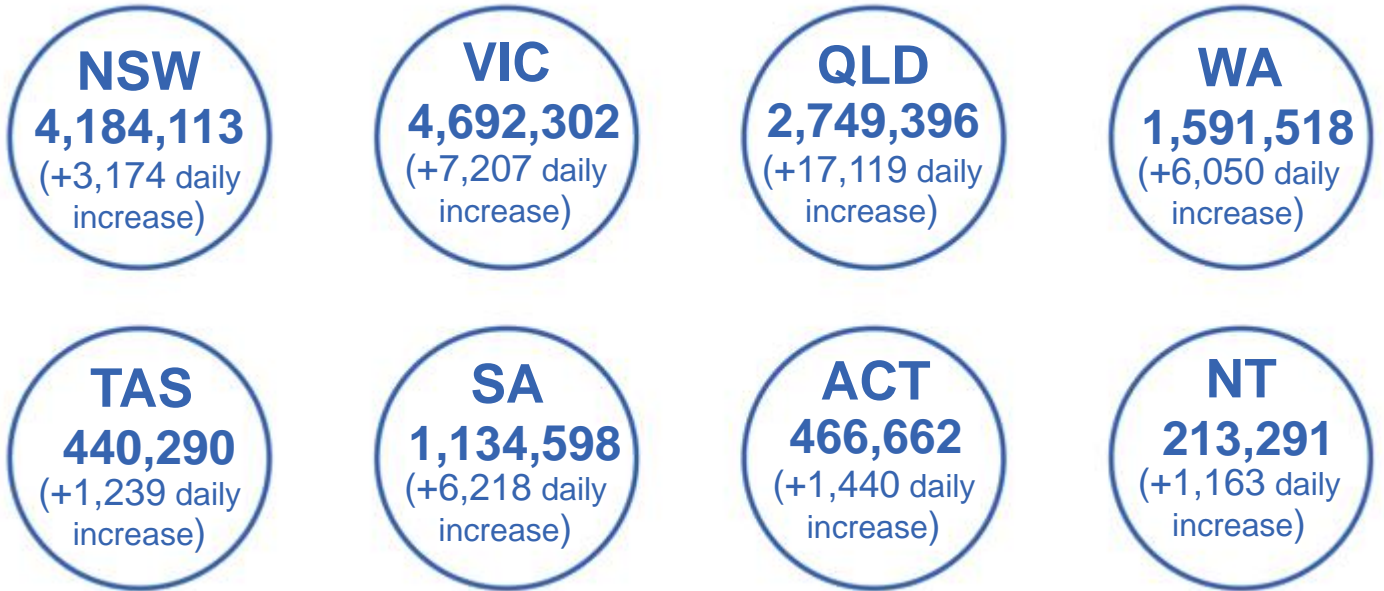
Data as at:  
15 Nov 2021

# Jurisdiction administered

Total vaccine doses administered in State and Territory clinics as at 15 November



**15,472,170** total vaccine doses administered  
in State and Territory clinics as at 15 November  
+ **43,610** recorded in the last 24 hours  
+ **318,962** recorded in the last 7 days



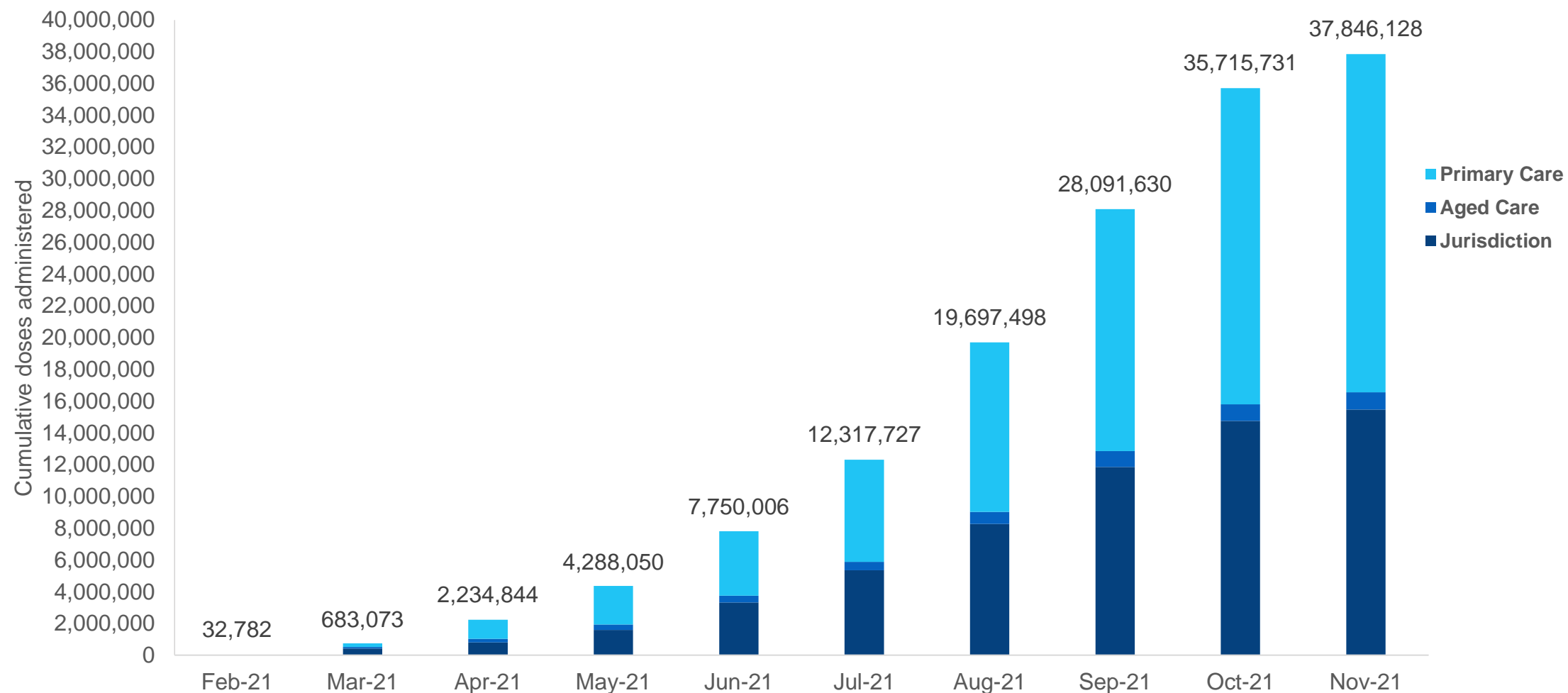
\*Sourced from the Australian Immunisation Register and self-reported data. Numbers are calculated as difference in daily cumulative reported numbers to allow for historical corrections in all self-reported data sources.

Source: Australian Immunisation Register

# Cumulative doses administered by channel

Data as at:  
15 Nov 2021

Australia's COVID-19  
Vaccine Roadmap



Source: Australian Immunisation Register

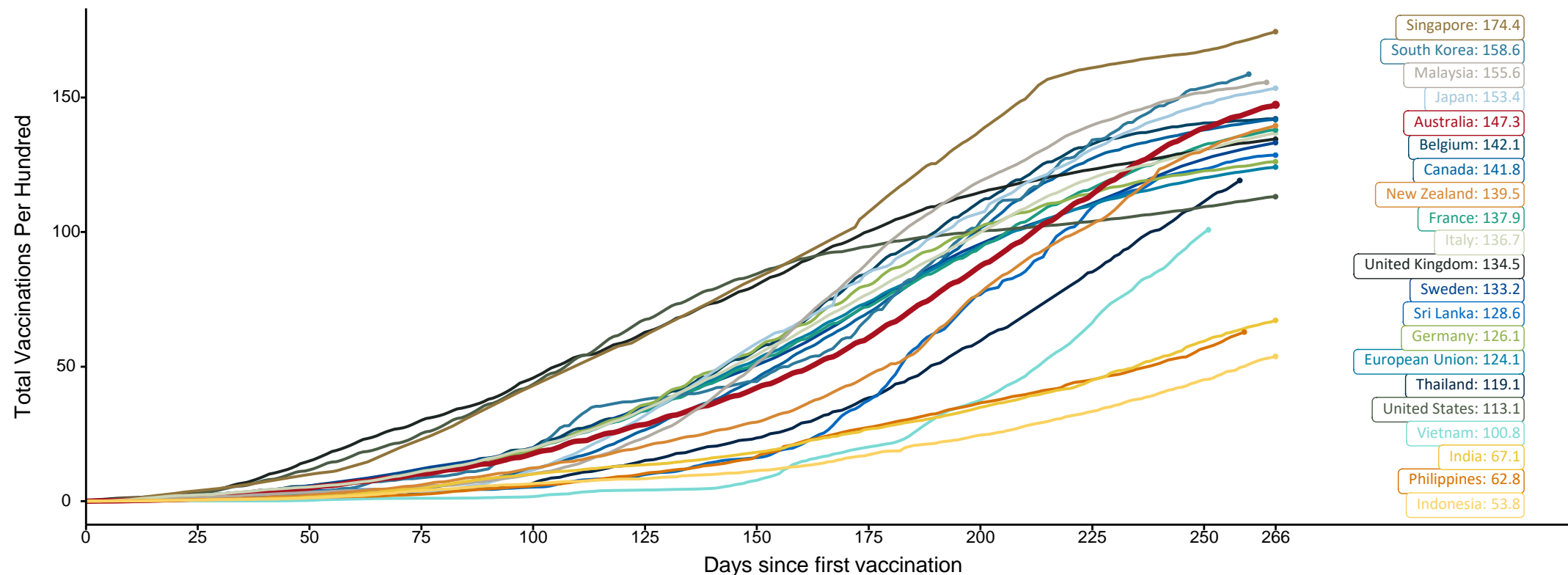


# Doses at equivalent stages of rollout (Day 266)

Data as at:  
15 Nov 2021

The x-axis is truncated at the length of Australia's vaccination program. Countries with intermittent reporting have had their doses per 100 imputed to Australia's current stage of rollout. Israel excluded as it is beyond scale of the graph

Cumulative doses administered (15 Nov): **37,846,128**



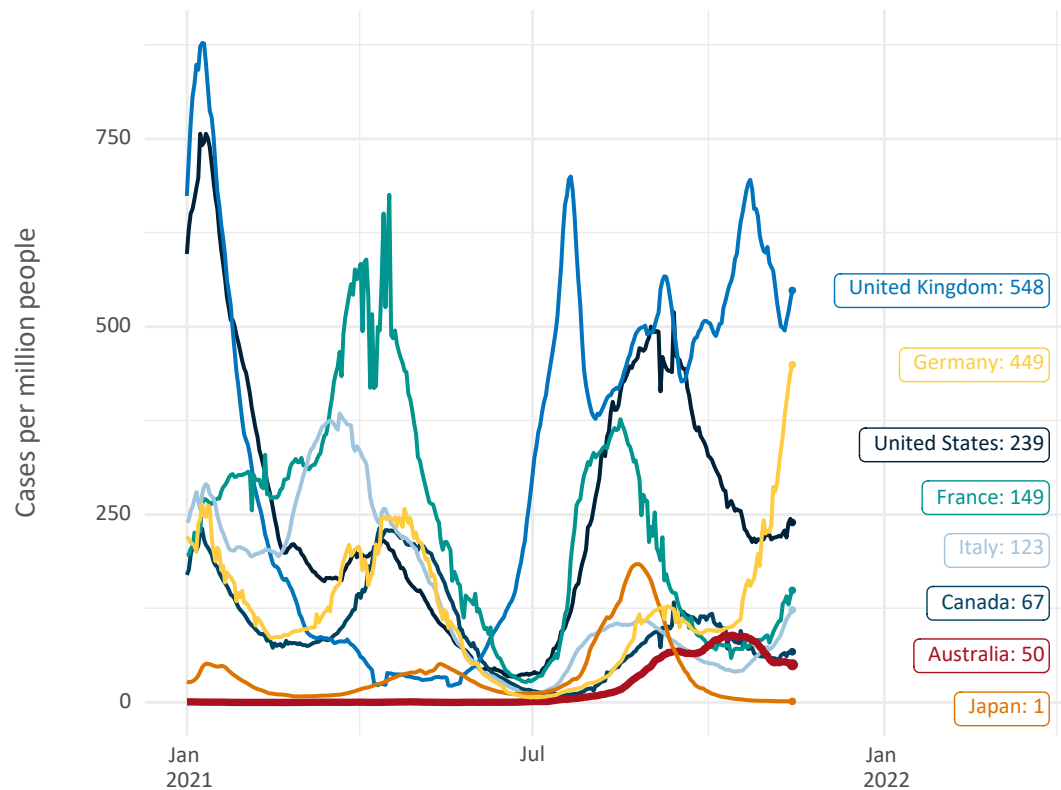
Note: From 15 September 2021, data for Australia includes all doses administered to people 12 and over. Prior to 15 September, data was for 16 and over  
Source: Department of Health (Australia), Our World in Data (international)  
Latest data: 15 November



# International data – COVID-19

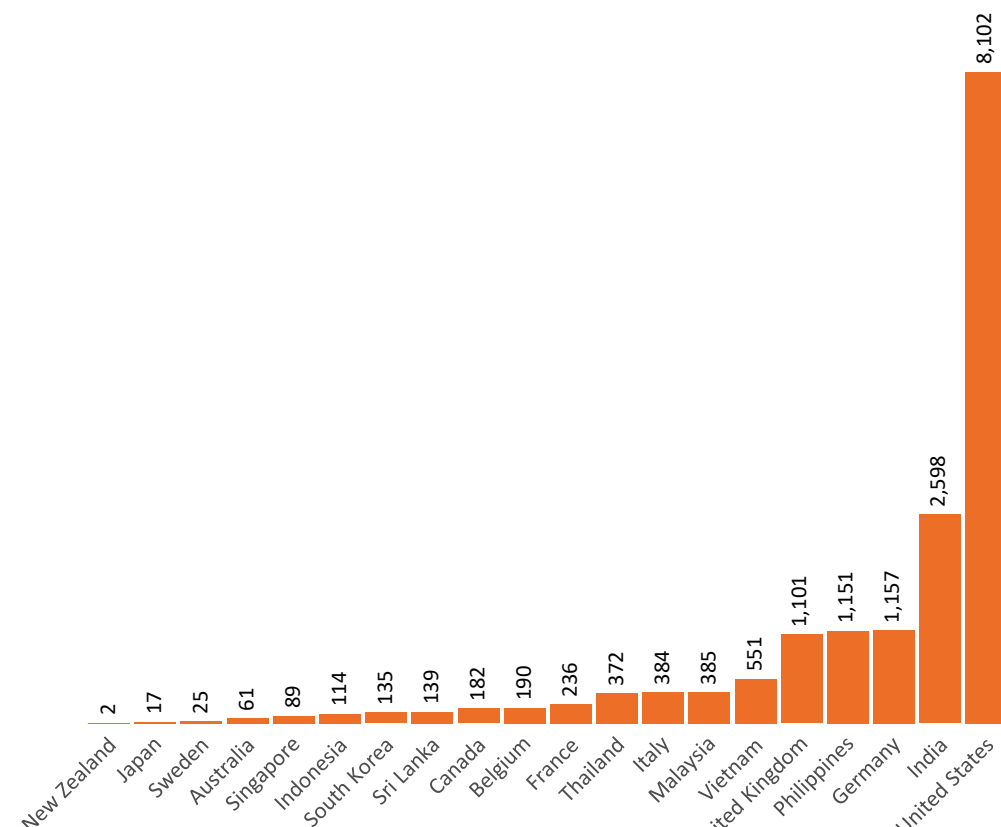
Data as at:  
15 Nov 2021

New daily cases per million in 2021, Australia and G7 countries  
Smoothed - 7 day average



Source: OWID  
Data downloaded: 16 Nov 2021 08:24  
Latest data: 14 Nov 2021

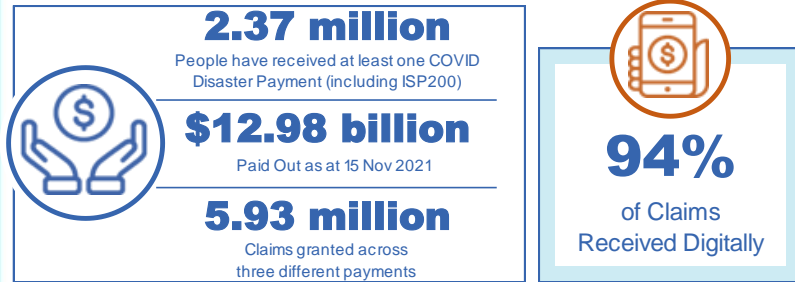
COVID-19 deaths in past 7 days - Australia and select countries



Source: OWID  
Data downloaded: 16 Nov 2021 08:25  
Latest data: 14 Nov 2021

Data as at midnight:  
15 Nov 2021

# Pandemic Response Payments (Current)



<b>COVID Disaster Payment:</b>	5.73 million claims received - 2.19 million individuals paid a total of \$12.53 billion.
<b>\$200 Income Support Payment:</b>	347,000 claims received - 183,000 individuals paid a total of \$268.09 million.
<b>Pandemic Leave Disaster Payment:</b>	130,000 claims received - 111,000 individuals paid a total of \$181.64 million.



## COVID Disaster Payment

assisting during a lockdown event in a Commonwealth hotspot.

## Income Support Payment \$200

for income support recipients who lost at least 8 hours of work.

## Pandemic Leave Disaster Payment

for those who have to self-isolate, quarantine or care.

For more information visit:  
[servicesaustralia.gov.au](https://servicesaustralia.gov.au)

## CURRENT COVID-19 DISASTER PAYMENTS

### New South Wales

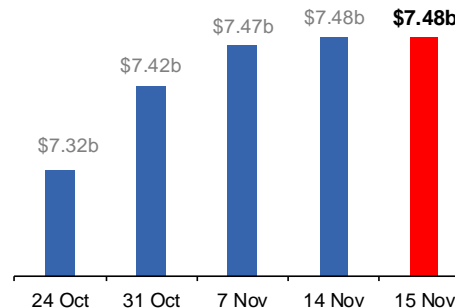
Lockdown from 24 Jun to 10 Oct  
Claiming period ends 27 Nov

**1.08m people have received at least one COVID Disaster Payment.**

**\$7.48b paid out as at 15 Nov 2021.**

**\$9m paid in initial and reoccurring payments in the week ending 14 Nov 2021.**

Cumulative payments made by State since activation on 1 Jul 2021.



### Victoria

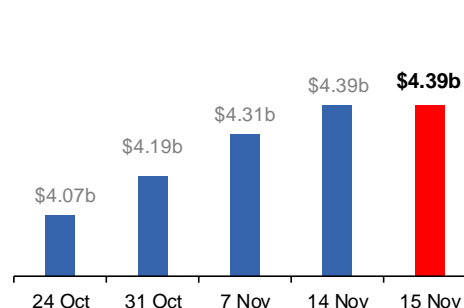
Lockdown (#6) since 6 Aug to 28 Oct  
Claiming period ends 9 Dec

**743,000 people have received at least one COVID Disaster Payment.**

**\$4.39b paid out as at 15 Nov 2021.**

**\$82m paid in initial and reoccurring payments in the week ending 14 Nov 2021.**

Cumulative payments made by State since activation on 8 Jun 2021.



### Australian Capital Territory

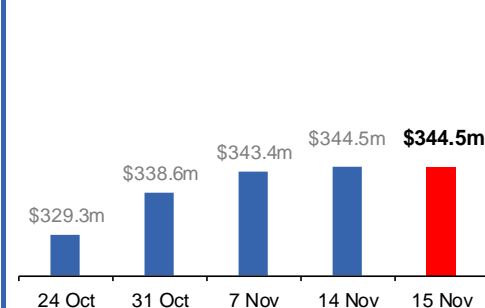
Lockdown since 12 Aug to 14 Oct  
Claiming period ends 25 Nov

**65,000 people have received at least one COVID Disaster Payment.**

**\$344.5m paid out as at 15 Nov 2021.**

**\$1.0m paid in initial and reoccurring payments in the week ending 14 Nov 2021.**

Cumulative payments made by State since activation on 20 Aug 2021.



### Northern Territory

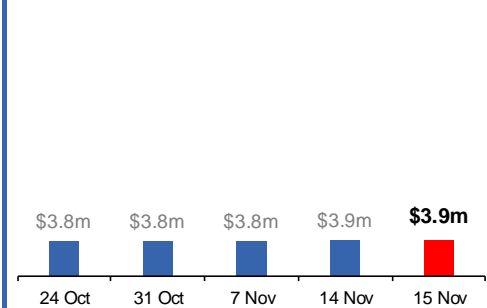
Lockdown (#2) from 5 Nov to 7 Nov  
Claiming period ends 2 Dec

**5,900 people have received at least one COVID Disaster Payment.**

**\$3.9m paid out as at 15 Nov 2021.**

**\$133,000 paid in initial payments in the week ending 14 Nov 2021.**

Cumulative payments made by State since activation on 25 Aug 2021.



# Pandemic Response Payments (Closed Events)

Data as at midnight:  
15 Nov 2021

## CLOSED COVID-19 DISASTER PAYMENTS


### Tasmania

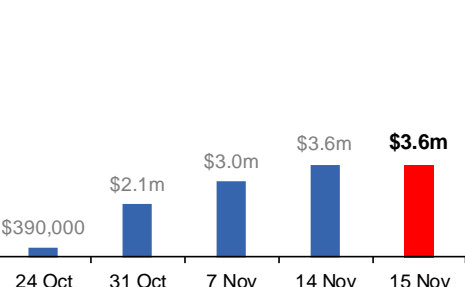
Lockdown from 15 Oct to 18 Oct  
Claiming period ended 12 Nov

**6,900 people have received at least one COVID Disaster Payment.**

**\$3.6m paid out as at 15 Nov 2021.**

**\$565,000 paid in initial payments in the week ending 14 Nov 2021.**

 Cumulative payments made by State since activation on 22 Oct 2021.




### Queensland

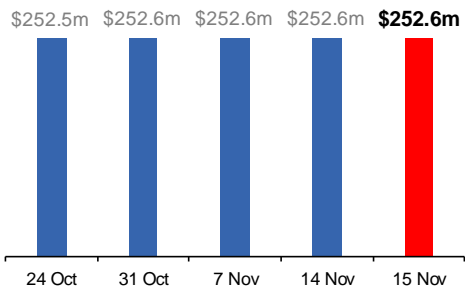
Lockdown from 31 Jul to 11 Aug  
Claiming period ended 28 Aug

**196,000 people have received at least one COVID Disaster Payment.**

**\$252.6m paid out as at 15 Nov 2021.**

**\$14,000 paid in initial and reoccurring payments in the week ending 14 Nov 2021.**

 Cumulative payments made by State since activation on 7 Aug 2021.




### South Australia

Lockdown from 21 to 27 Jul  
Claiming period ended 17 Aug

**86,000 people have received at least one COVID Disaster Payment.**

**\$48.2m paid out as at 15 Nov 2021.**

**Nil payments made in the week ending 14 Nov 2021.**

 Cumulative payments made by State since activation on 28 Jul 2021.

