



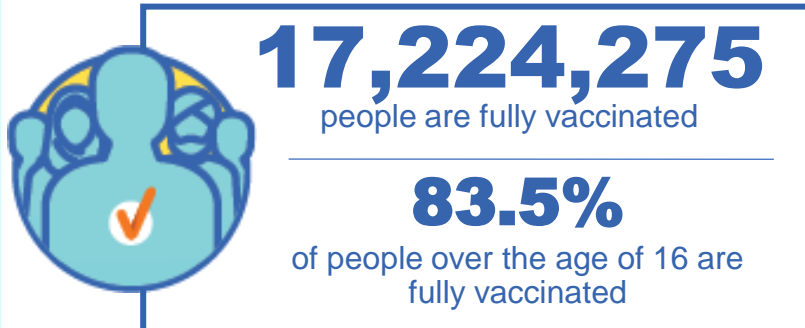
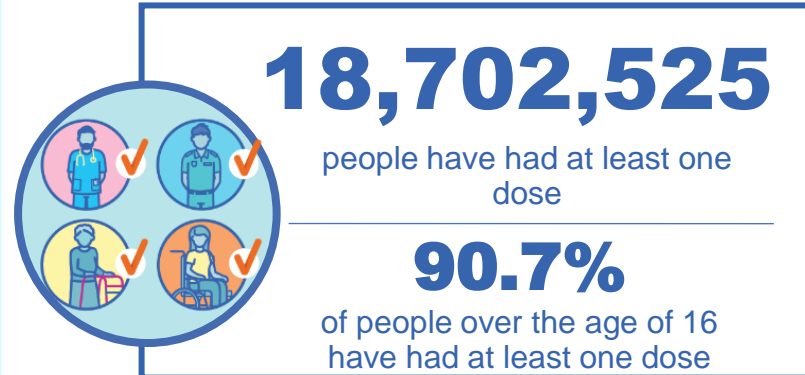
Australian Government
Operation COVID Shield

COVID-19 Vaccine Roll-out

16 November 2021

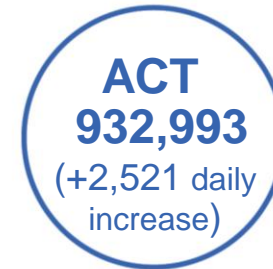
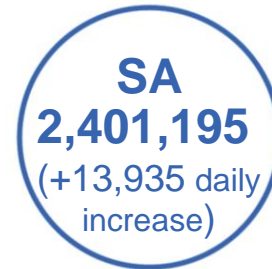
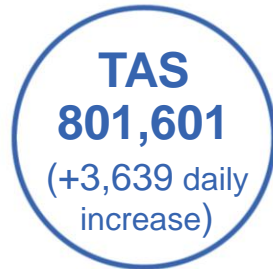
Data as at:
15 Nov 2021

Total vaccine doses



37,846,128 total vaccine doses administered nationally as at 15 November

+140,067 recorded in the last 24 hours



*Administration state breakdown indicates state in which a vaccine was administered
**Overall dose count includes instances of more than two doses per person in a small number of cases.

Source: Australian Immunisation Register

Data as at:
15 Nov 2021

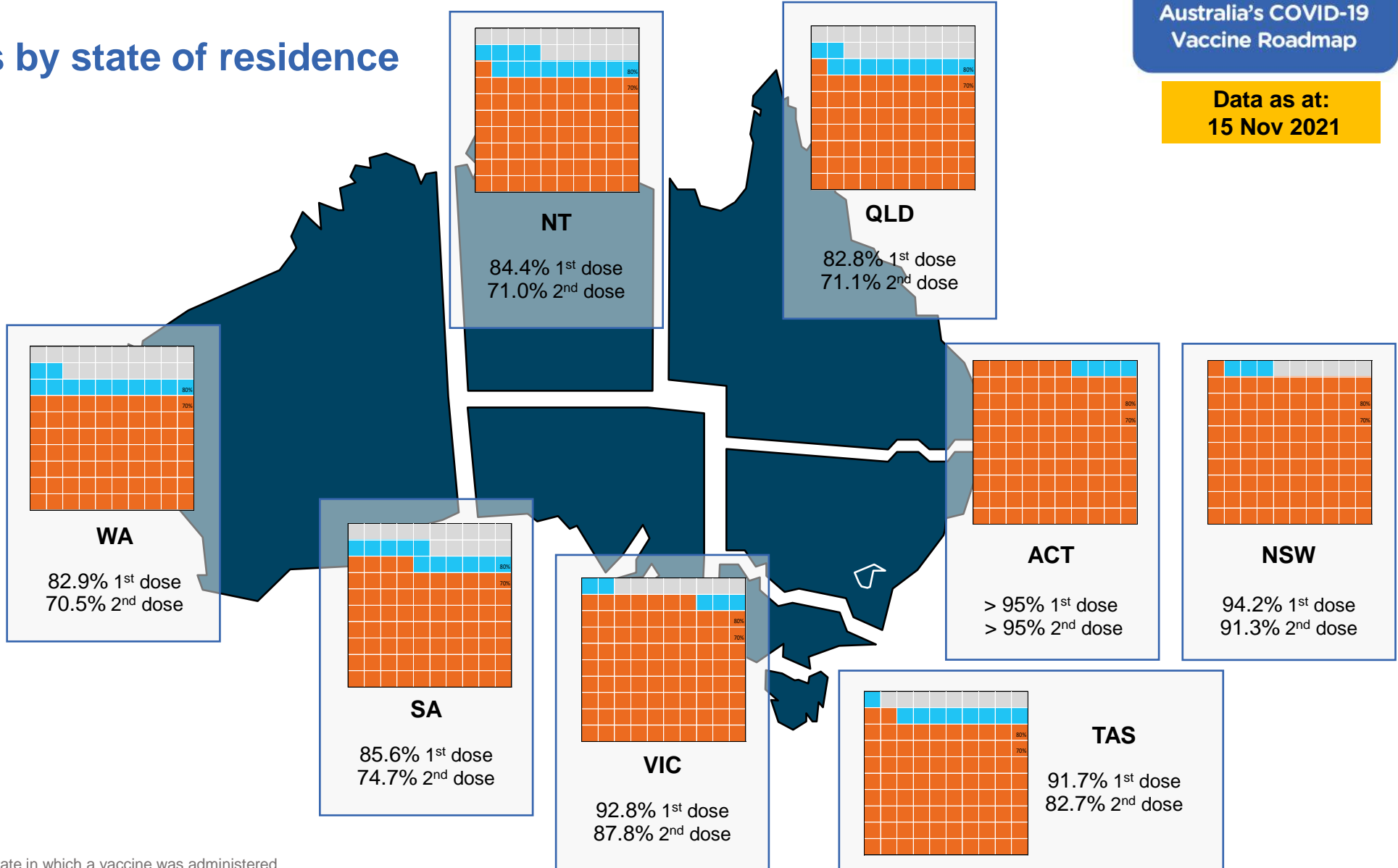
Vaccinations by state of residence

First doses

Age	Today	4 weeks ago	8 weeks ago
16+	90.7%	85.6%	73.8%
50+	>95%	93.7%	87.5%
70+	>95%	>95%	94.2%

Fully vaccinated

Age	Today	4 weeks ago	8 weeks ago
16+	83.5%	69.9%	48.6%
50+	90.9%	81.2%	67.7%
70+	94.7%	86.7%	76.4%



*Residential state may differ from the state in which a vaccine was administered

Commonwealth and Jurisdiction vaccine doses administered

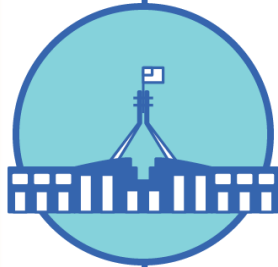
Data as at:
15 Nov 2021



37,846,128 total vaccine doses administered nationally as at 15 November
+ **140,067** recorded in the last 24 hours



15,472,170 doses administered by state and territory facilities
+ **43,610** recorded in the last 24 hours



22,373,958 doses administered by commonwealth facilities
+ **96,457** recorded in the last 24 hours
21,293,486 total vaccine doses administered in primary care settings
1,080,472 total vaccine doses administered in aged care and disability settings

NSW	Jurisdictions	Commonwealth
Cumulative	4,184,113	8,585,518
Daily increase	3,174	15,975

VIC	Jurisdictions	Commonwealth
Cumulative	4,692,302	5,733,485
Daily increase	7,207	22,611

QLD	Jurisdictions	Commonwealth
Cumulative	2,749,396	3,998,666
Daily increase	17,119	31,195

WA	Jurisdictions	Commonwealth
Cumulative	1,591,518	1,818,524
Daily increase	6,050	14,305

TAS	Jurisdictions	Commonwealth
Cumulative	440,290	361,311
Daily increase	1,239	2,400

SA	Jurisdictions	Commonwealth
Cumulative	1,134,598	1,266,597
Daily increase	6,218	7,717

ACT	Jurisdictions	Commonwealth
Cumulative	466,662	466,331
Daily increase	1,440	1,081

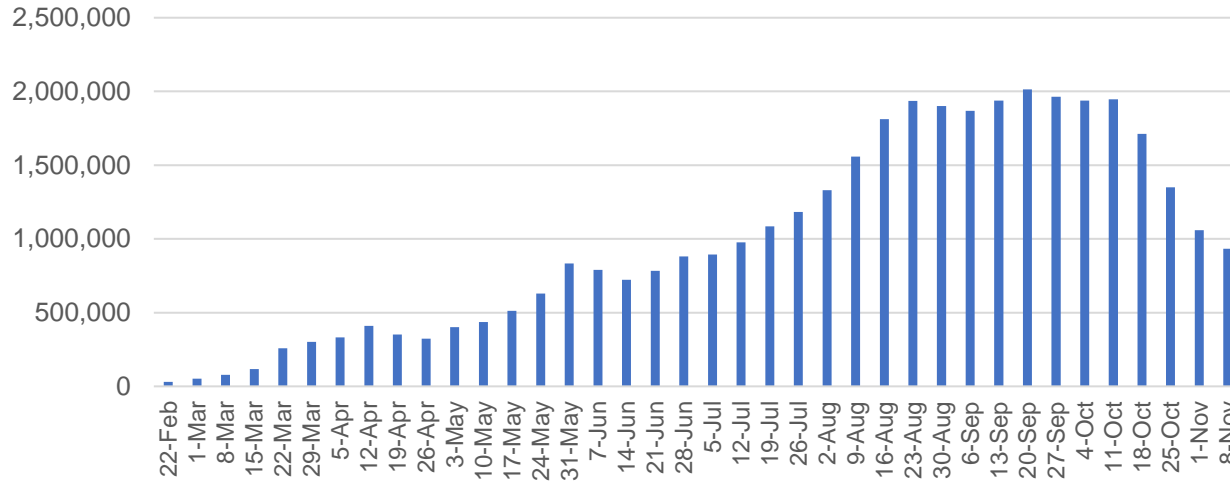
NT	Jurisdictions	Commonwealth
Cumulative	213,291	143,526
Daily increase	1,163	1,173

Vaccine milestone charts

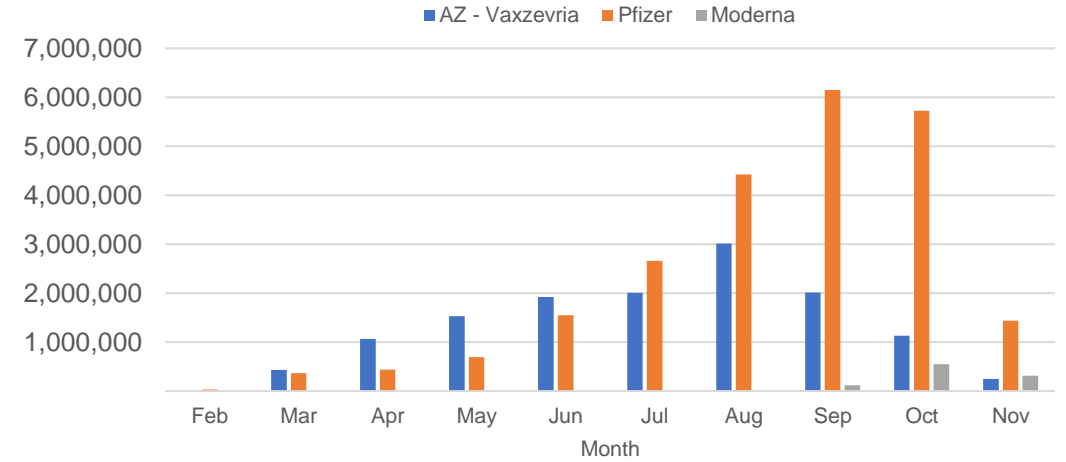
Data as at:
15 Nov 2021

Australia's COVID-19
Vaccine Roadmap

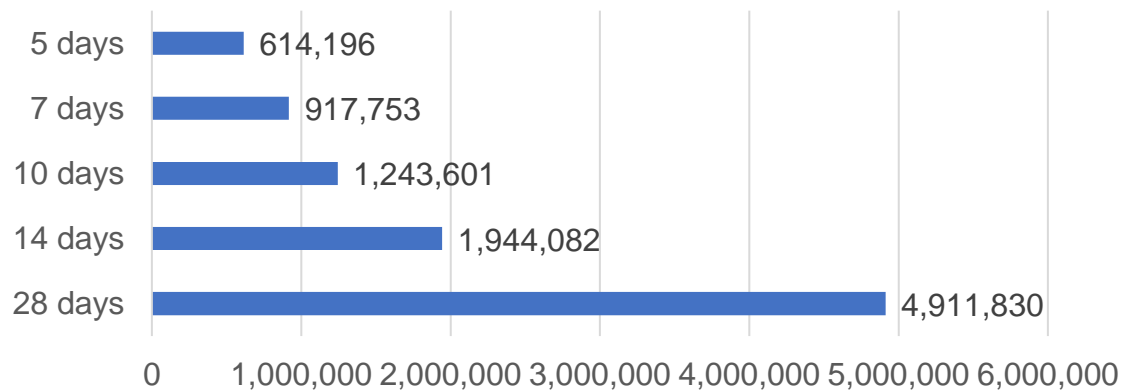
Doses Administered by Week



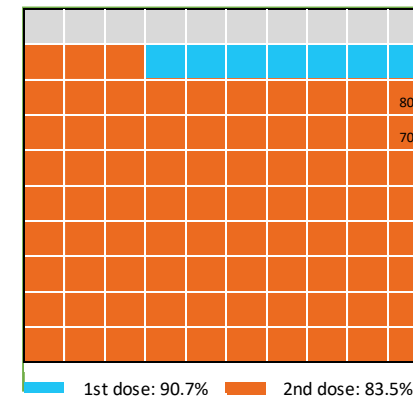
Doses by administration month and vaccine type



Doses Reported



Eligible population percentage coverage



*Sourced from the Australian Immunisation Register.

*Each square represents 1% of the national population. Squares are filled as milestones are achieved.

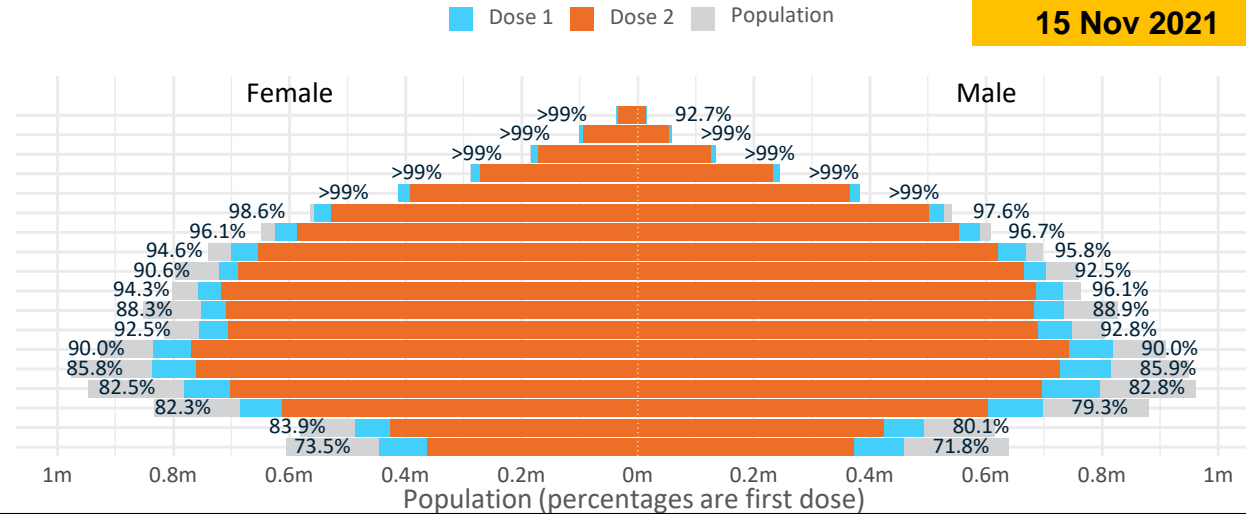
Doses by age and sex

First and second doses by age and sex

Data as at:
15 Nov 2021

	16+	50+	70+	12-15
Dose 1	90.70% (18,702,525 doses / 20,619,959 people)	96.47% (8,440,884 doses / 8,749,703 people)	>99% (2,941,317 doses / 2,934,706 people)	72.61% (903,267 doses / 1,243,990 people)
Dose 2	83.53% (17,224,275 doses / 20,619,959 people)	90.87% (7,950,604 doses / 8,749,703 people)	94.69% (2,778,848 doses / 2,934,706 people)	59.03% (734,339 doses / 1,243,990 people)

Age	Dose 1	Dose 2
95+	51,540 (97.4%)	46,287 (87.5%)
90-94	159,475 (>99%)	146,737 (92.6%)
85-89	317,452 (>99%)	296,083 (93.6%)
80-84	531,524 (>99%)	502,229 (95.0%)
75-79	795,971 (>99%)	757,350 (97.9%)
70-74	1,085,355 (98.2%)	1,030,162 (93.2%)
65-69	1,214,643 (96.5%)	1,140,057 (90.6%)
60-64	1,369,234 (95.3%)	1,274,031 (88.7%)
55-59	1,425,364 (91.6%)	1,353,218 (87.0%)
50-54	1,490,326 (95.3%)	1,404,450 (89.8%)
45-49	1,486,775 (88.7%)	1,391,369 (83.0%)
40-44	1,503,860 (92.8%)	1,396,375 (86.2%)
35-39	1,656,389 (90.3%)	1,513,932 (82.5%)
30-34	1,659,144 (86.2%)	1,493,315 (77.6%)
25-29	1,586,617 (83.2%)	1,406,410 (73.8%)
20-24	1,388,250 (81.1%)	1,220,767 (71.3%)
16-19	980,606 (82.0%)	851,503 (71.2%)
12-15	903,267 (72.6%)	734,339 (59.0%)



	AUS	ACT	NSW	NT	QLD	SA	TAS	VIC	WA
16 and over - dose 1	18,702,525	344,255	6,186,837	160,805	3,403,461	1,233,603	403,488	5,017,128	1,754,015
16 and over - dose 2	17,224,275	332,949	5,991,536	135,262	2,922,920	1,075,508	363,814	4,750,217	1,490,552
16 and over - population	20,619,959*	344,037	6,565,651	190,571	4,112,707	1,440,400	440,172	5,407,574	2,114,978
16 and over % with dose 1	90.70%	>99%	94.23%	84.38%	82.75%	85.64%	91.67%	92.78%	82.93%
16 and over % with dose 2	83.53%	96.78%	91.26%	70.98%	71.07%	74.67%	82.65%	87.84%	70.48%
50 and over - dose 1	8,440,884	133,296	2,759,005	54,869	1,623,825	629,069	209,426	2,158,072	818,134
50 and over - dose 2	7,950,604	129,654	2,686,944	49,488	1,480,331	568,438	193,249	2,062,010	734,035
50 and over - population	8,749,703	127,802	2,807,793	62,280	1,758,855	674,384	220,036	2,211,211	885,370
50 and over % with dose 1	96.47%	>99%	98.26%	88.10%	92.32%	93.28%	95.18%	97.60%	92.41%
50 and over % with dose 2	90.87%	>99%	95.70%	79.46%	84.16%	84.29%	87.83%	93.25%	82.91%
70 and over - dose 1	2,941,317	43,395	973,462	11,244	562,931	236,568	77,048	742,745	272,742
70 and over - dose 2	2,778,848	42,050	944,561	10,335	522,268	215,118	71,111	707,351	247,884
70 and over - population	2,934,706	39,946	962,606	12,343	577,767	240,514	77,155	743,519	280,281
70 and over % with dose 1	>99%	>99%	>99%	91.10%	97.43%	98.36%	>99%	>99%	97.31%
70 and over % with dose 2	94.69%	>99%	98.13%	83.73%	90.39%	89.44%	92.17%	95.14%	88.44%
12 to 15 - dose 1	903,267	19,598	314,932	8,374	159,572	49,307	17,645	258,828	68,433
12 to 15 - dose 2	734,339	18,407	288,431	5,919	108,945	31,438	12,482	221,942	42,287
12 to 15 - population	1,243,990	19,693	390,330	13,060	270,146	82,747	26,308	308,611	132,869
12 to 15 % with dose 1	72.61%	>99%	80.68%	64.12%	59.07%	59.59%	67.07%	83.87%	51.50%
12 to 15 % with dose 2	59.03%	93.47%	73.89%	45.32%	40.33%	37.99%	47.45%	71.92%	31.83%

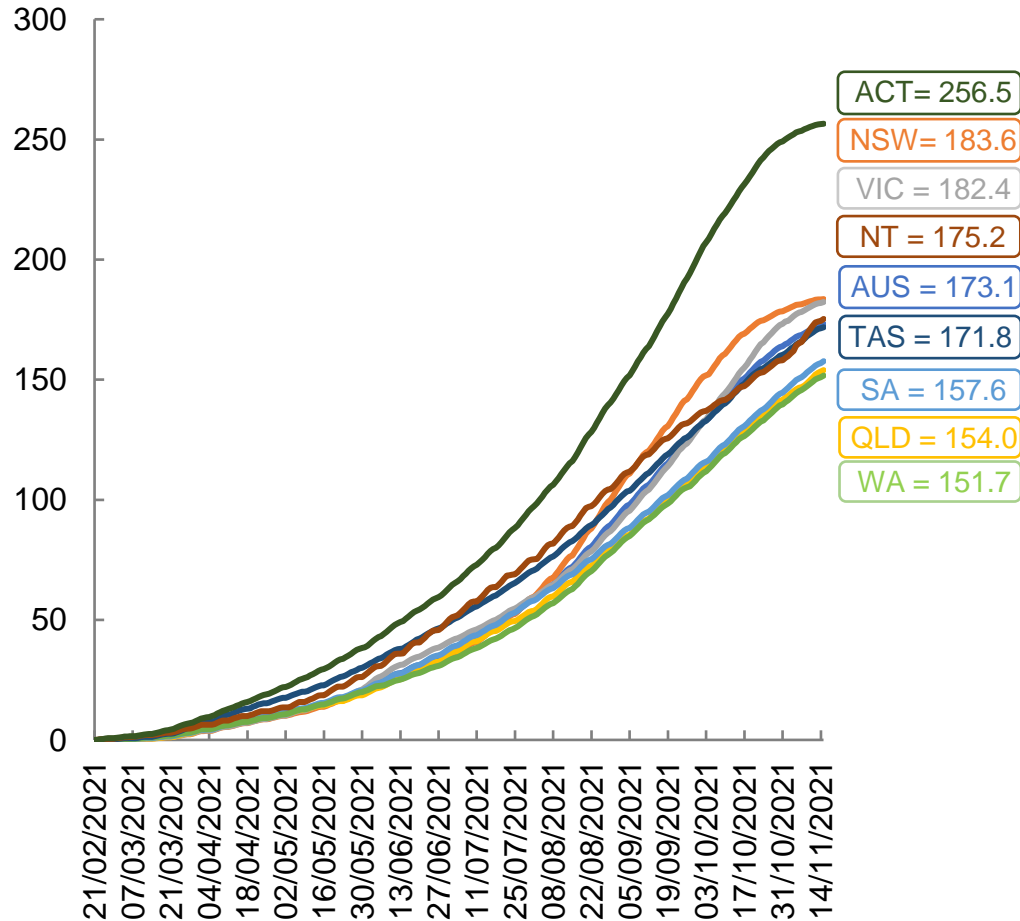
*National population will not equal sum of listed jurisdictions due to a small number of people counted in national population residing in some 'other' territories. Sum of state doses will not add to national total as some records are unable to be geocoded to a State or Territory.
Doses sourced from Australian Immunisation Register, population from ABS ERP June 2020

Vaccinations by location

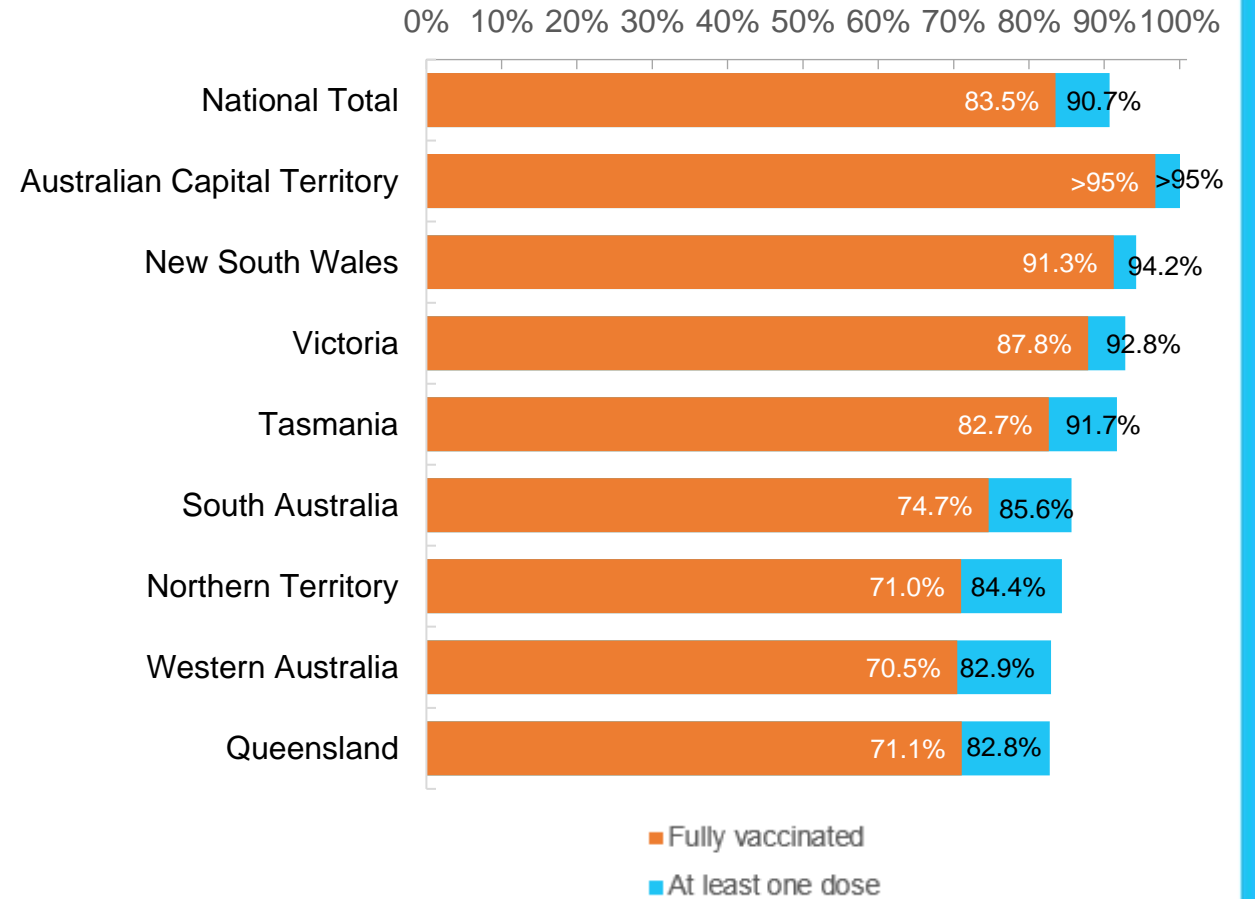
Data as at:
15 Nov 2021

Australia's COVID-19
Vaccine Roadmap

Cumulative total doses administered vs eligible state populations*



First and Second Doses by state of residence



*Not an indication of percentage vaccinated, numbers will exceed 100 due to multiple doses required per person of the population. All doses are included, including those for the 12-15 cohort, and are based on vaccination provider location.

Aboriginal and Torres Strait Islander peoples

Number of people vaccinated

Data as at:
09 Nov 2021
Updated weekly

Australia's COVID-19
Vaccine Roadmap



352,289

people over the age of 16
have had at least one dose

67.0%

of people over the age of 16
have had at least one dose



291,171

people over the age of 16
are fully vaccinated

55.3%

of people over the age of 16 are
fully vaccinated



33,540

(46.7%)

people aged 12-15 years
have had at least one dose

172 Aboriginal community controlled health services (ACCHS)

0#	50	26	40	12	3	21	18
ACT	NSW	NT	QLD	SA	TAS	VIC	WA

Medicare Address State ^{##}	Individuals Dose 1	Individuals Dose 1 %	Individuals Dose 2	Individuals Dose 2 %
Unknown	11,049	41.4%	7,527	28.1%
Australian Capital Territory	4,807	88.6%	4,498	82.7%
New South Wales	133,749	83.6%	123,270	76.9%
Northern Territory	30,991	67.5%	22,567	48.9%
Other Territories	148	91.1%	142	87.5%
Queensland	79,840	55.1%	61,183	42.1%
South Australia	14,809	57.5%	11,272	43.6%
Tasmania	12,821	74.7%	10,858	62.8%
Victoria	34,253	84.9%	29,810	73.6%
Western Australia	29,822	46.4%	20,044	31.0%
Totals	352,289	67.0%	291,171	55.3%

*Identifying as Aboriginal and Torres Strait Islander is optional and the estimated population may be under reported.

**Includes all Aboriginal and Torres Strait Islander peoples who have received a vaccination, not limited to those administered in an ACCHS setting

#ACCHS in the ACT are currently operating as a Commonwealth Vaccine Clinics so not included to avoid double counting

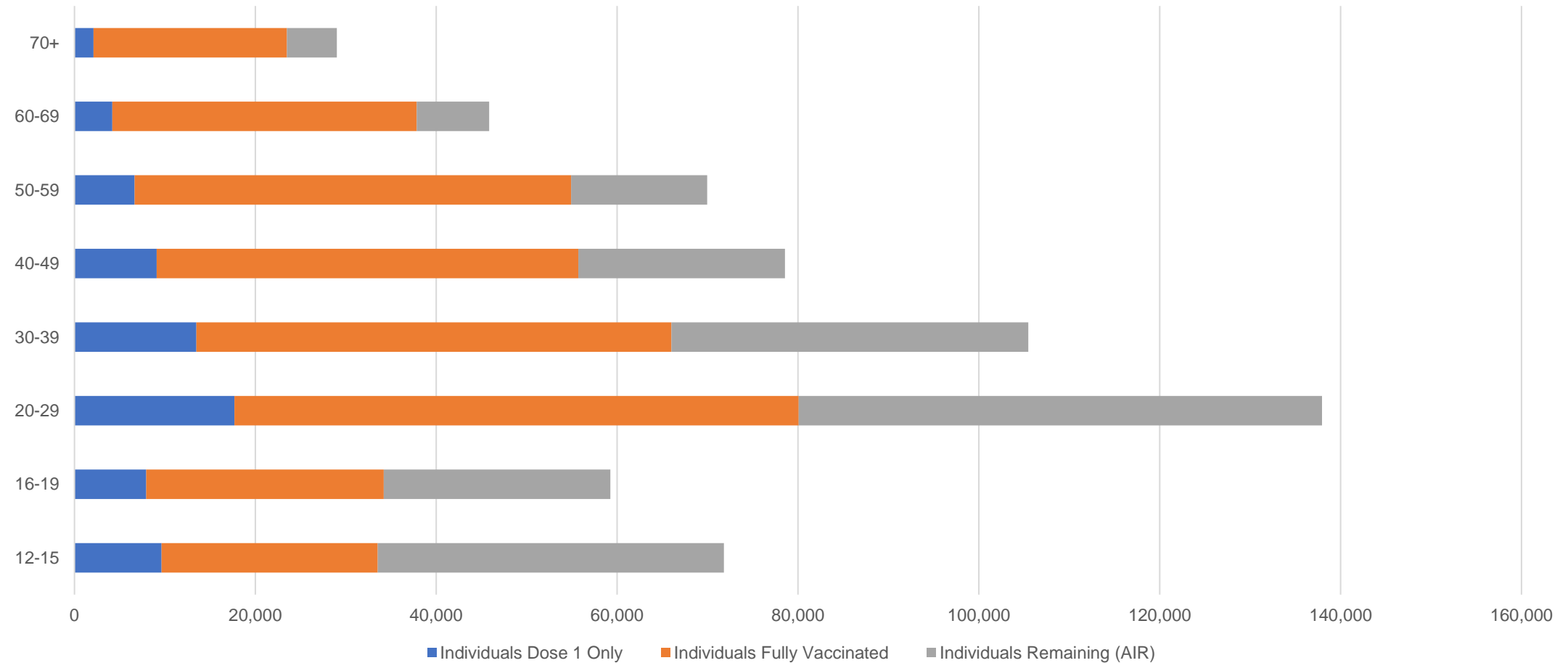
##The above table includes all identified Aboriginal and Torres Strait Islander people who are aged 16 and above by their state of residence.

Aboriginal and Torres Strait Islander peoples

Number of people vaccinated by age

Data as at:
09 Nov 2021
Updated weekly

Australia's COVID-19
Vaccine Roadmap



Source: Australian Immunisation Register

Data as at:
15 Nov 2021

Commonwealth primary care



Primary care vaccine administration sites

5,622	137	172	3,439
GPs	CVCs	ACCHS	Pharmacies



21,293,486 total vaccine doses administered
primary care settings as at 15 November
+ 94,383 recorded in the last 24 hours

Primary care vaccinations by provider type

	Doses administered	Daily increase	7 day increase
General Practice* includes other Commonwealth	19,231,478	65,553	409,541
Pharmacy	2,062,008	28,830	173,592



142,316 doses administered to persons residing in other territories or with missing residential information

*General practice includes Commonwealth Vaccination Clinics, Aboriginal Community Health Centres, Royal Flying Doctor Service and other Commonwealth vaccination facilities

Source: Australian Immunisation Register

Data as at:
15 Nov 2021

Commonwealth aged care and disability doses administered



1,080,472 (+ 2,074 last 24 hours)

Total vaccine doses administered in aged care and disability facilities as at 15 November

Number of doses administered as part of the Commonwealth aged and disability care rollout

NSW
514,310
(+3 daily increase)

VIC
200,900
(+154 daily increase)

QLD
161,632
(+1,210 daily increase)

WA
75,258
(+269 daily increase)

TAS
17,675
(+5 daily increase)

SA
65,644
(+262 daily increase)

ACT
13,543
(+21 daily increase)

NT
6,082
(+15 daily increase)

25,428

doses administered to persons residing in other territories or with missing residential information

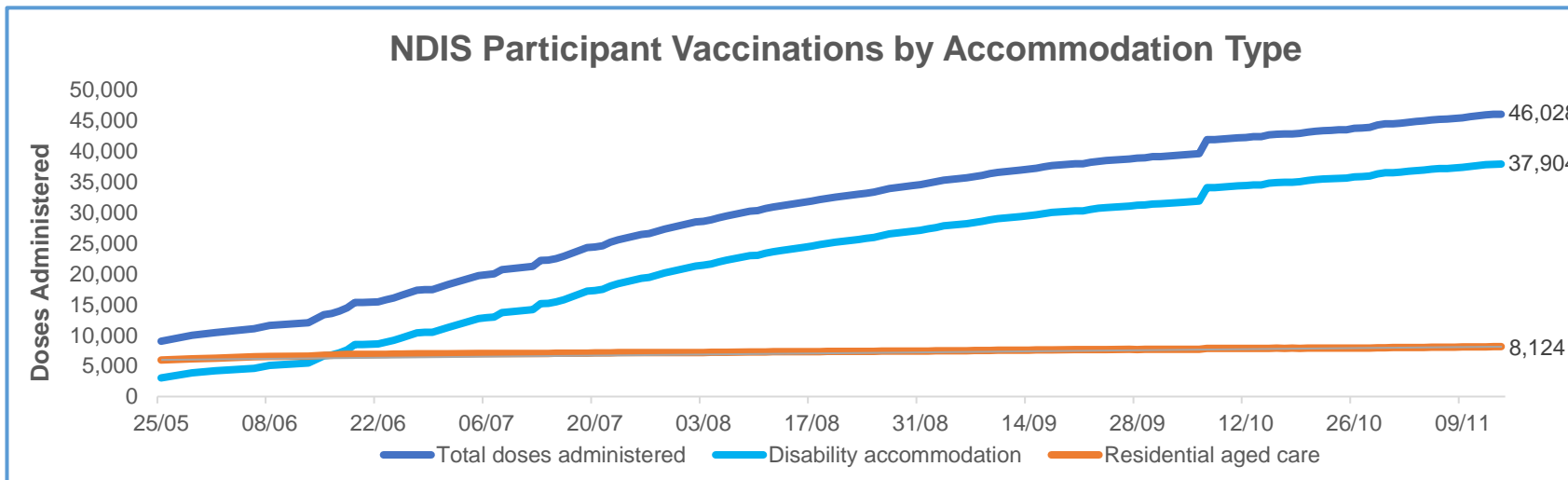
*Sourced from the Australian Immunisation Register. Includes all persons vaccinated at participating residential aged care, disability and related industry settings.
**State level breakdown indicates the residential location and may not align to the state in which the vaccination occurred.

Source: Australian Immunisation Register

Data as at:
15 Nov 2021*

Vaccination rate of people with disability and the disability workforce

Phase 1a – People with disability living in shared accommodation



	Total people with at least one dose	People fully vaccinated	Total number of individuals in cohort	Total doses administered	% People with at least one dose	% People fully vaccinated
NDIS participants living in shared accommodation **	23,650	22,378	27,603	46,028	85.7%	81.1%
NDIS screened workers ***	207,058	194,060	242,348	401,118	85.4%	80.1%



* Updates are available Monday to Friday on participants, and bi-weekly for workers, numbers may be up to four days old.

** Shared accommodation means two or more people with disability living in shared residential accommodation and NDIS participants living in Residential Aged Care accommodation as per the eligibility criteria of Phase 1a.

*** Total number of workers within the NDIS Commission Worker Screening database who have ever been successfully screened and linked to an NDIS registered provider or participant.

Source: Linkage between National Disability Insurance Agency data, NDIS Quality and Safeguards Commission data and the Australian Immunisation Register.

Residential aged care vaccination rollout

Residential aged care facilities status

100%

Commonwealth facilities visited (2,553 planned sites)

161,189

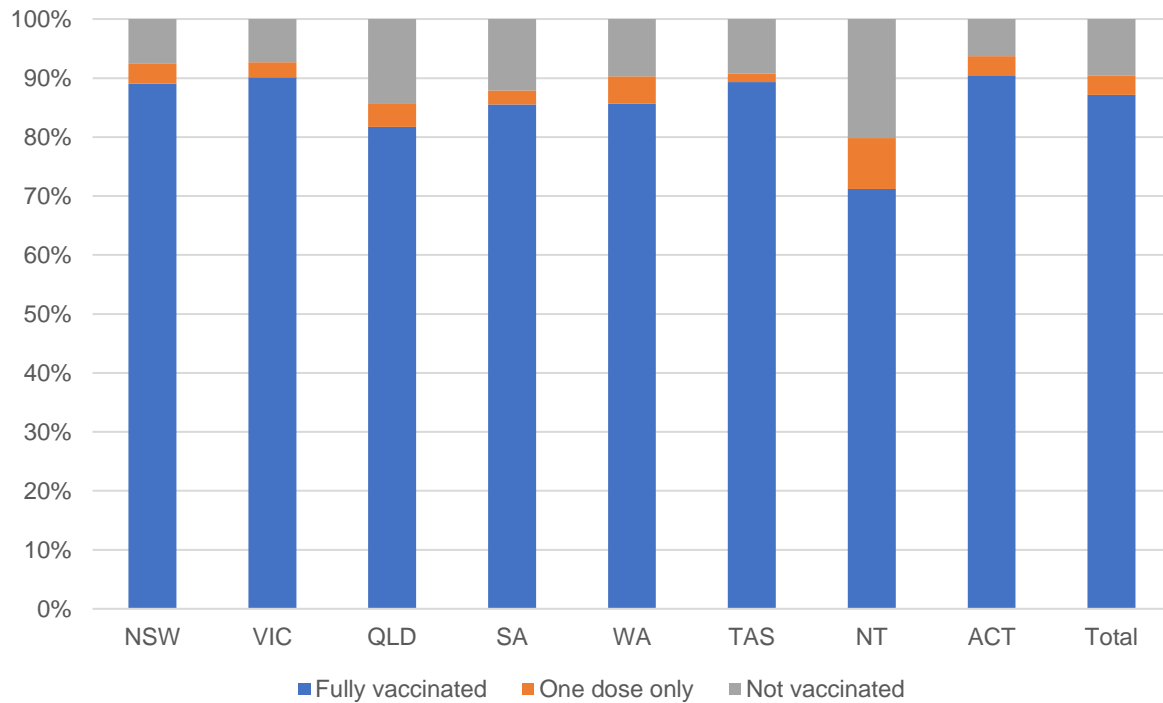
People fully vaccinated

167,317

People with at least one dose

**Data as at:
15 Nov 2021**

Aged care resident vaccinations



Aged care worker vaccinations

Jurisdictions	Total workers with at least one dose	Workers fully vaccinated	% Workers with at least one dose	% Workers fully vaccinated
NSW	78,709	77,791	99.7%	98.6%
VIC	71,285	68,765	99.8%	96.2%
QLD	48,648	47,417	99.9%	97.3%
SA	27,435	26,337	100.0%	96.0%
WA	23,692	22,258	99.9%	93.9%
TAS	7,660	7,336	100.0%	95.8%
NT	822	817	99.5%	98.9%
ACT	2,959	2,897	99.9%	97.8%
Total	261,210	253,618	99.8%	96.9%

Source: My Aged Care Portal staff vaccination progress

**Resident vaccination information is reported manually by service providers

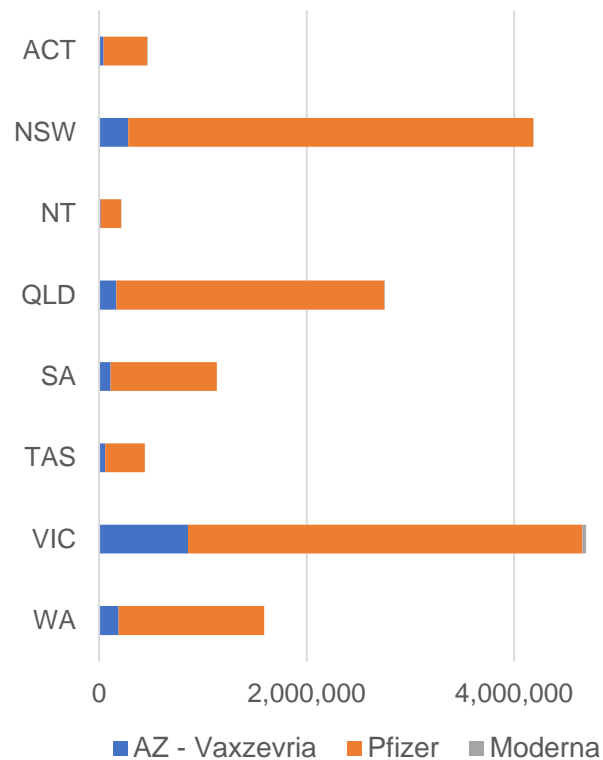
*Status updates are provided by facilities at least once per week. Reporting is updated Monday to Friday to encompass different facility updates being made on different days.

Data is sourced directly from Aged Care Service Providers and is not drawn or closely aligned with data from AIR due to inconsistencies and potential lags in uploading of records.

Data as at:
15 Nov 2021

Jurisdiction administered

Total vaccine doses administered in State and Territory clinics as at 15 November



15,472,170 total vaccine doses administered in State and Territory clinics as at 15 November
 + **43,610** recorded in the last 24 hours
 + **318,962** recorded in the last 7 days

NSW
4,184,113
 (+3,174 daily increase)

VIC
4,692,302
 (+7,207 daily increase)

QLD
2,749,396
 (+17,119 daily increase)

WA
1,591,518
 (+6,050 daily increase)

TAS
440,290
 (+1,239 daily increase)

SA
1,134,598
 (+6,218 daily increase)

ACT
466,662
 (+1,440 daily increase)

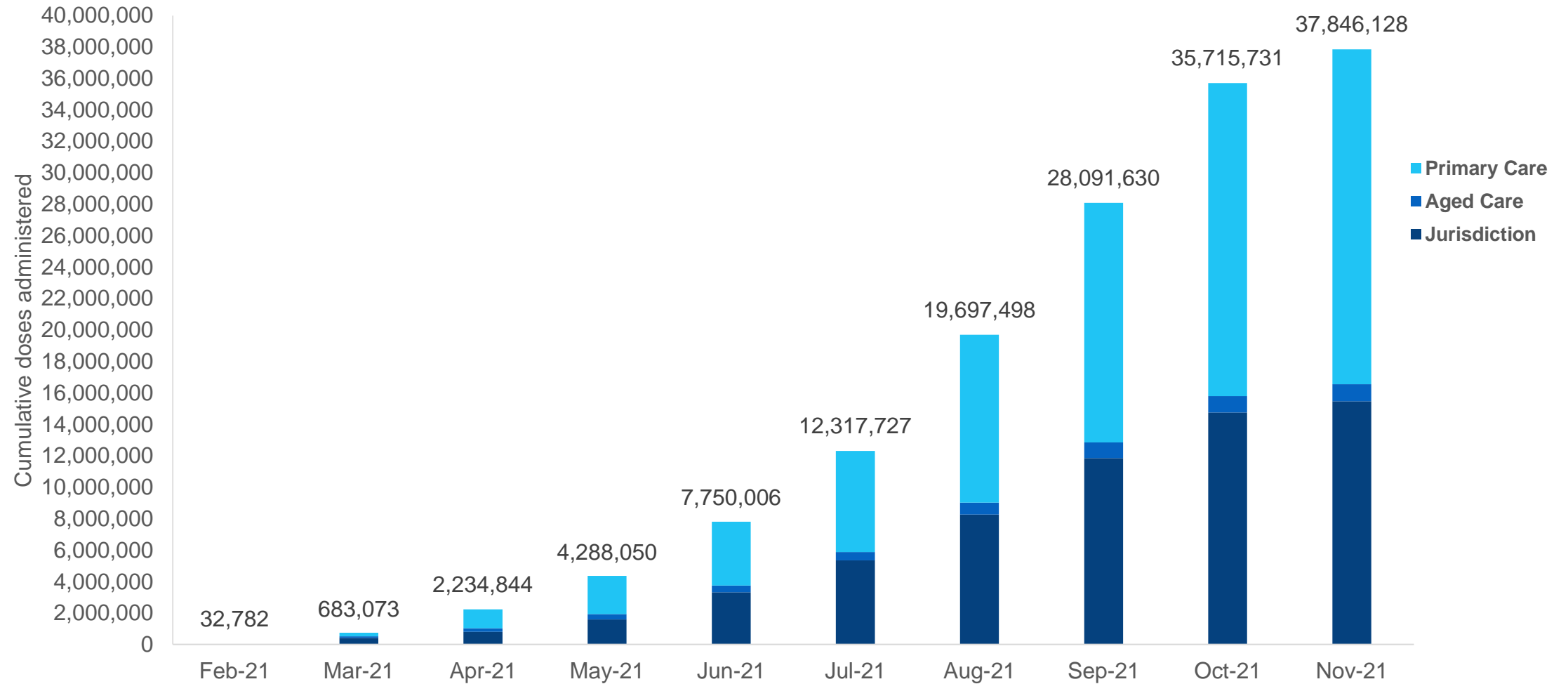
NT
213,291
 (+1,163 daily increase)

*Sourced from the Australian Immunisation Register and self-reported data. Numbers are calculated as difference in daily cumulative reported numbers to allow for historical corrections in all self-reported data sources.

Source: Australian Immunisation Register

Data as at:
15 Nov 2021

Cumulative doses administered by channel



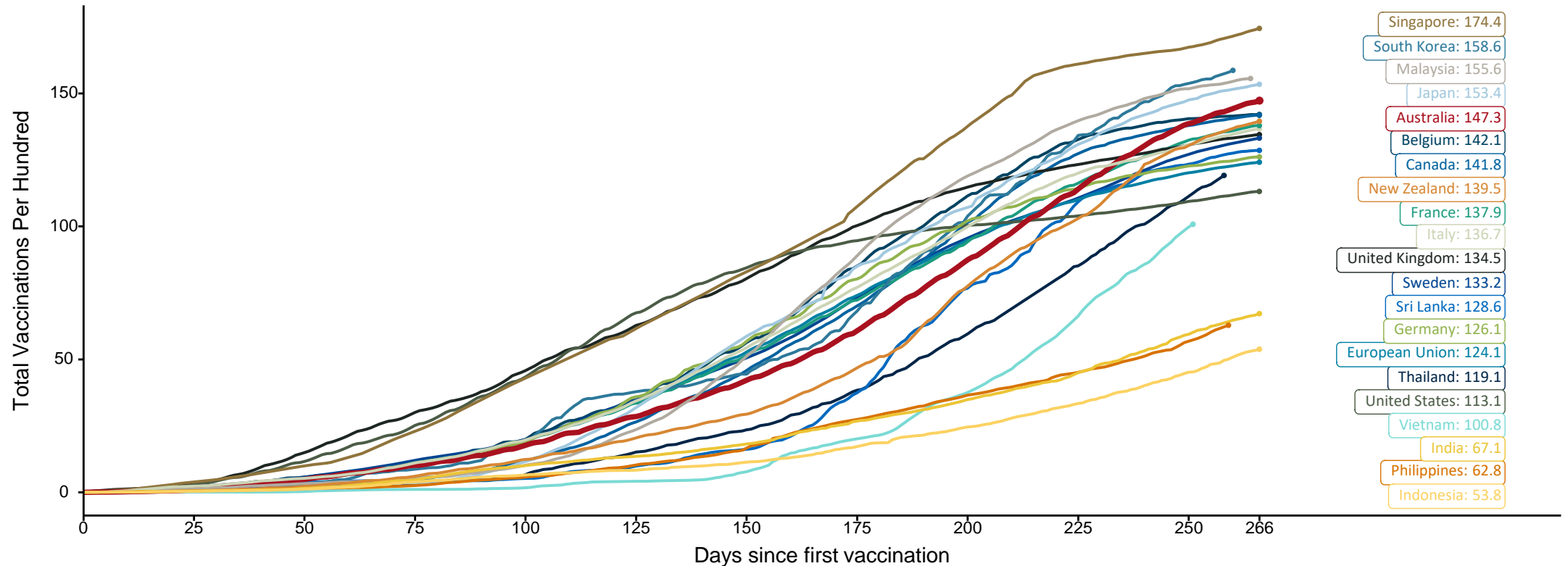
Source: Australian Immunisation Register

Doses at equivalent stages of rollout (Day 266)

Data as at:
15 Nov 2021

The x-axis is truncated at the length of Australia's vaccination program. Countries with intermittent reporting have had their doses per 100 imputed to Australia's current stage of rollout. Israel excluded as it is beyond scale of the graph

Cumulative doses administered (15 Nov): **37,846,128**

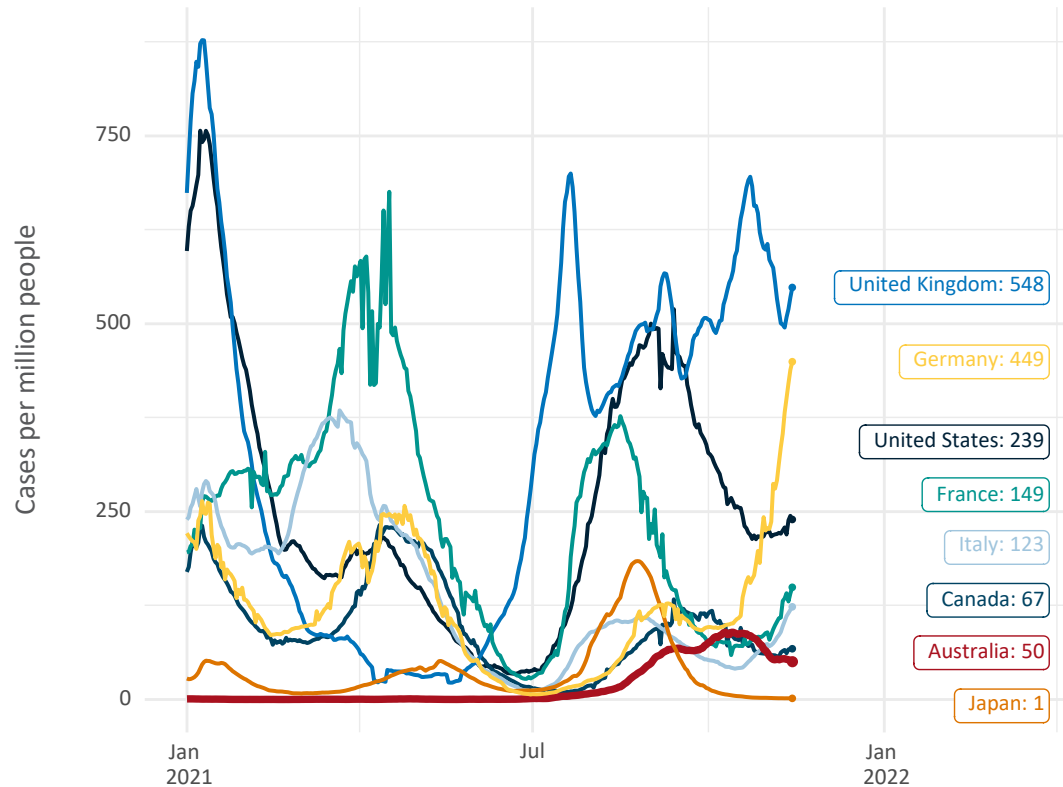


Note: From 15 September 2021, data for Australia includes all doses administered to people 12 and over. Prior to 15 September, data was for 16 and over
 Source: Department of Health (Australia), Our World in Data (international)
 Latest data: 15 November

Data as at:
15 Nov 2021

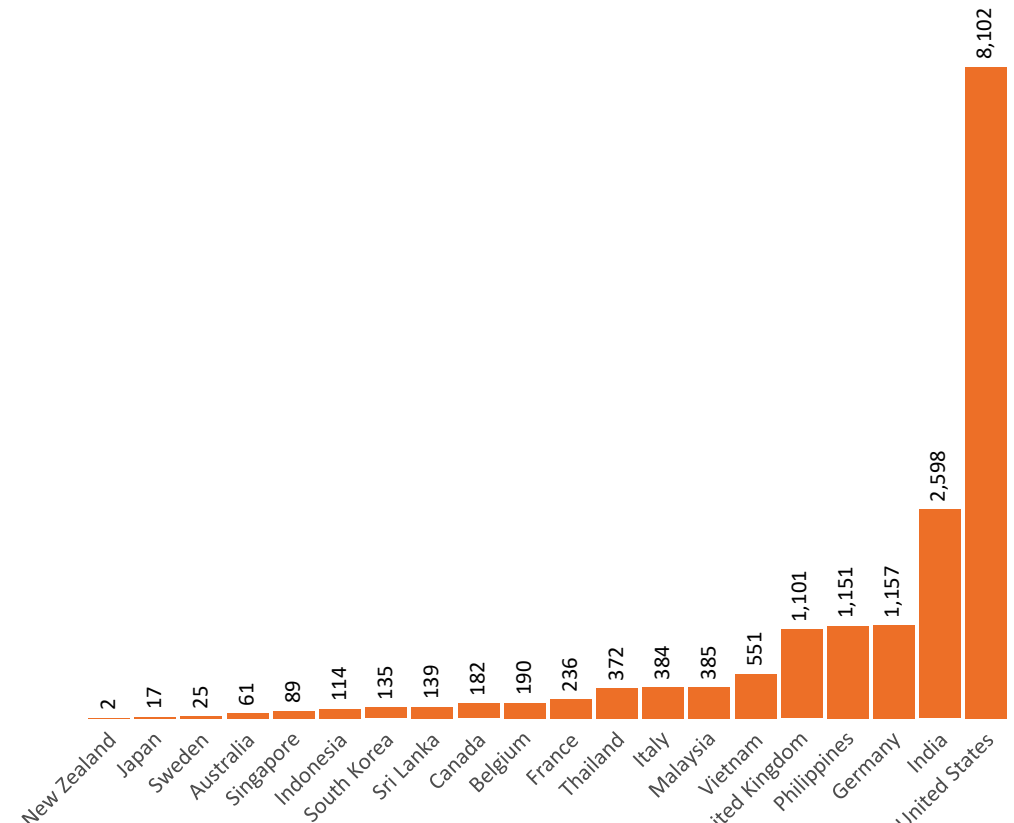
International data – COVID-19

New daily cases per million in 2021, Australia and G7 countries
Smoothed - 7 day average



Source: OWID
Data downloaded: 16 Nov 2021 08:24
Latest data: 14 Nov 2021

COVID-19 deaths in past 7 days - Australia and select countries



Source: OWID
Data downloaded: 16 Nov 2021 08:25
Latest data: 14 Nov 2021

Pandemic Response Payments (Current)

Data as at midnight:
15 Nov 2021



2.37 million
People have received at least one COVID Disaster Payment (including ISP200)

\$12.98 billion
Paid Out as at 15 Nov 2021


5.93 million
Claims granted across three different payments



94%
of Claims Received Digitally



COVID Disaster Payment:	5.73 million claims received - 2.19 million individuals paid a total of \$12.53 billion.
\$200 Income Support Payment:	347,000 claims received - 183,000 individuals paid a total of \$268.09 million.
Pandemic Leave Disaster Payment:	130,000 claims received - 111,000 individuals paid a total of \$181.64 million.



THREE PAYMENTS AVAILABLE

COVID Disaster Payment
assisting during a lockdown event in a Commonwealth hotspot.

Income Support Payment \$200
for income support recipients who lost at least 8 hours of work.

Pandemic Leave Disaster Payment
for those who have to self-isolate, quarantine or care.

For more information visit:
servicesaustralia.gov.au

CURRENT COVID-19 DISASTER PAYMENTS

New South Wales
Lockdown from 24 Jun to 10 Oct
Claiming period ends 27 Nov

1.08m people have received at least one COVID Disaster Payment.

\$7.48b paid out as at 15 Nov 2021.

\$9m paid in initial and reoccurring payments in the week ending 14 Nov 2021.

Cumulative payments made by State since activation on 1 Jul 2021.

Date	Cumulative Payments (\$b)
24 Oct	\$7.32b
31 Oct	\$7.42b
7 Nov	\$7.47b
14 Nov	\$7.48b
15 Nov	\$7.48b

Victoria
Lockdown (#6) since 6 Aug to 28 Oct
Claiming period ends 9 Dec

743,000 people have received at least one COVID Disaster Payment.

\$4.39b paid out as at 15 Nov 2021.

\$82m paid in initial and reoccurring payments in the week ending 14 Nov 2021.

Cumulative payments made by State since activation on 8 Jun 2021.

Date	Cumulative Payments (\$b)
24 Oct	\$4.07b
31 Oct	\$4.19b
7 Nov	\$4.31b
14 Nov	\$4.39b
15 Nov	\$4.39b

Australian Capital Territory
Lockdown since 12 Aug to 14 Oct
Claiming period ends 25 Nov

65,000 people have received at least one COVID Disaster Payment.

\$344.5m paid out as at 15 Nov 2021.

\$1.0m paid in initial and reoccurring payments in the week ending 14 Nov 2021.

Cumulative payments made by State since activation on 20 Aug 2021.

Date	Cumulative Payments (\$m)
24 Oct	\$329.3m
31 Oct	\$338.6m
7 Nov	\$343.4m
14 Nov	\$344.5m
15 Nov	\$344.5m

Northern Territory
Lockdown (#2) from 5 Nov to 7 Nov
Claiming period ends 2 Dec

5,900 people have received at least one COVID Disaster Payment.

\$3.9m paid out as at 15 Nov 2021.

\$133,000 paid in initial payments in the week ending 14 Nov 2021.

Cumulative payments made by State since activation on 25 Aug 2021.

Date	Cumulative Payments (\$m)
24 Oct	\$3.8m
31 Oct	\$3.8m
7 Nov	\$3.8m
14 Nov	\$3.9m
15 Nov	\$3.9m

Data as at midnight:
15 Nov 2021

Pandemic Response Payments (Closed Events)

CLOSED COVID-19 DISASTER PAYMENTS

Tasmania

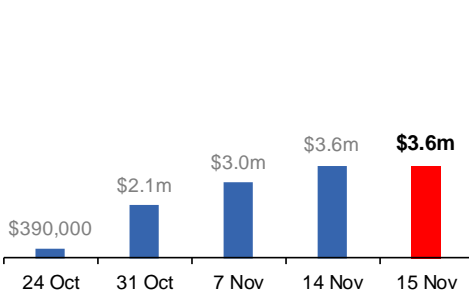
Lockdown from 15 Oct to 18 Oct
Claiming period ended 12 Nov

6,900 people have received at least one COVID Disaster Payment.

\$3.6m paid out as at 15 Nov 2021.

\$565,000 paid in initial payments in the week ending 14 Nov 2021.

Cumulative payments made by State since activation on 22 Oct 2021.



Queensland

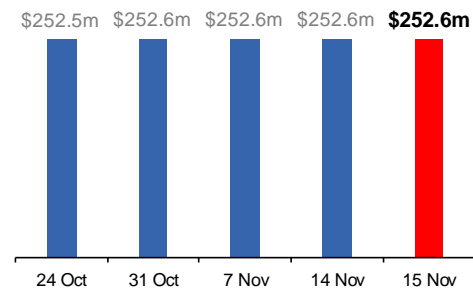
Lockdown from 31 Jul to 11 Aug
Claiming period ended 28 Aug

196,000 people have received at least one COVID Disaster Payment.

\$252.6m paid out as at 15 Nov 2021.

\$14,000 paid in initial and reoccurring payments in the week ending 14 Nov 2021.

Cumulative payments made by State since activation on 7 Aug 2021.



South Australia

Lockdown from 21 to 27 Jul
Claiming period ended 17 Aug

86,000 people have received at least one COVID Disaster Payment.

\$48.2m paid out as at 15 Nov 2021.

Nil payments made in the week ending 14 Nov 2021.

Cumulative payments made by State since activation on 28 Jul 2021.

