



**Australian Government**  
**Operation COVID Shield**

# COVID-19 Vaccine Rollout

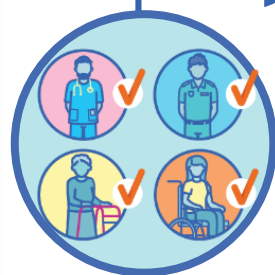
15 November 2021

Data as at:  
14 Nov 2021

## Total vaccine doses



**37,706,061** total vaccine  
doses administered nationally as at 14 November  
**+61,360** recorded in the last 24 hours



**18,663,788**

people have had at least one  
dose

**90.5%**

of people over the age of 16  
have had at least one dose



**17,147,602**

people are fully vaccinated

**83.2%**

of people over the age of 16 are  
fully vaccinated



**260,638**

people over the age of 16  
who have received more  
than two doses

**NSW**  
**12,750,482**  
(+3,183 daily  
increase)

**VIC**  
**10,395,969**  
(+9,651 daily  
increase)

**QLD**  
**6,699,748**  
(+30,739 daily  
increase)

**WA**  
**3,389,687**  
(+7,508 daily  
increase)

**TAS**  
**797,962**  
(+2,267 daily  
increase)

**SA**  
**2,387,260**  
(+6,827 daily  
increase)

**ACT**  
**930,472**  
(+738 daily  
increase)

**NT**  
**354,481**  
(+447 daily  
increase)

\*Administration state breakdown indicates state in which a vaccine was administered

\*\*Overall dose count includes instances of more than two doses per person in a small number of cases.

Source: Australian Immunisation Register

Data as at:  
14 Nov 2021

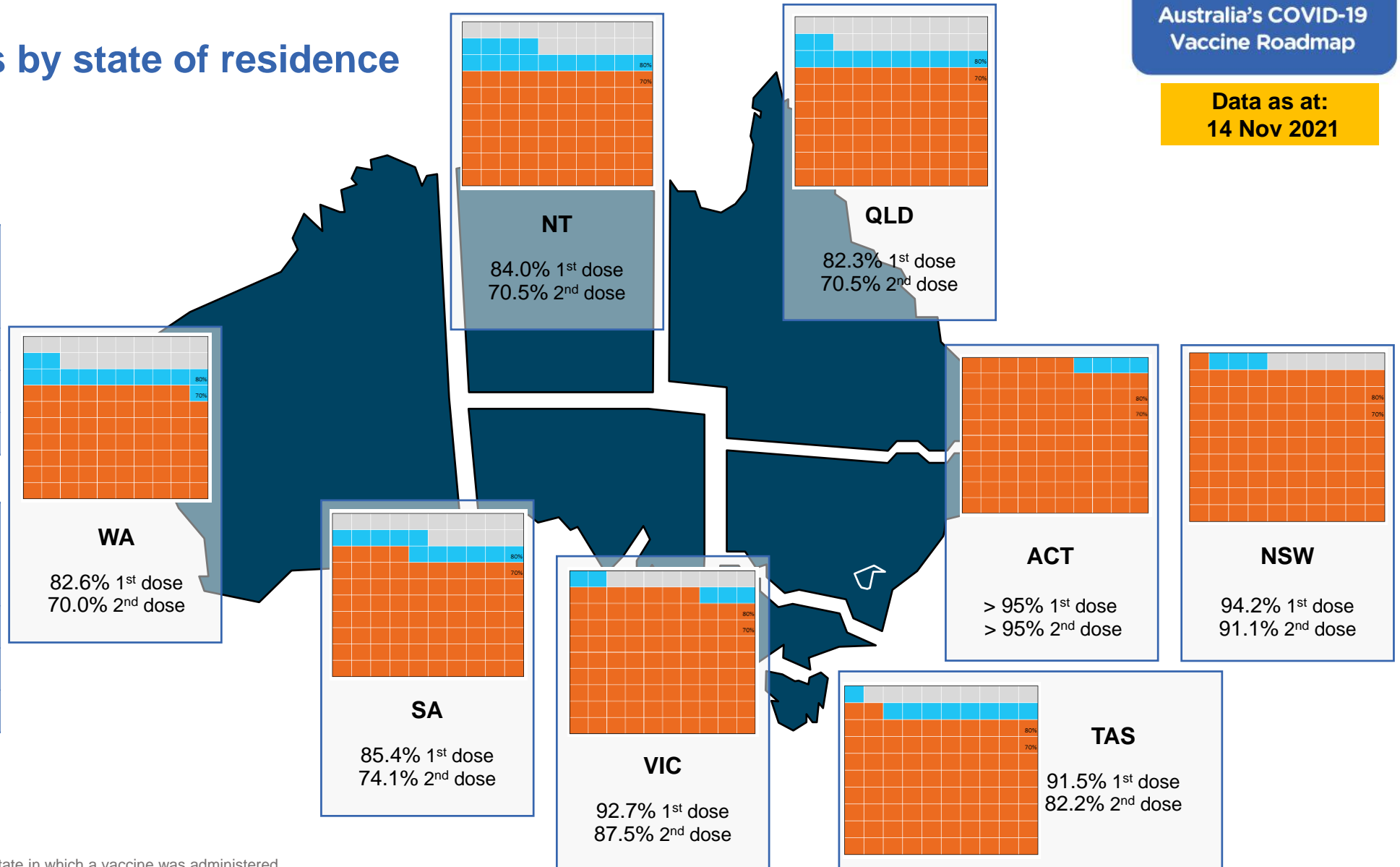
## Vaccinations by state of residence

### First doses

Age	Today	4 weeks ago	8 weeks ago
16+	90.5%	85.3%	73.1%
50+	>95%	93.6%	87.1%
70+	>95%	>95%	94.0%

### Fully vaccinated

Age	Today	4 weeks ago	8 weeks ago
16+	83.2%	69.1%	47.9%
50+	90.6%	80.7%	67.1%
70+	94.4%	86.2%	75.9%



\*Residential state may differ from the state in which a vaccine was administered

## Commonwealth and Jurisdiction vaccine doses administered

Data as at:  
14 Nov 2021

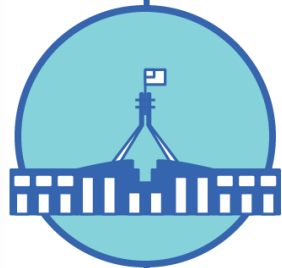


**15,428,560**

doses administered by state  
and territory facilities

**+ 41,167**

recorded in the last 24 hours



**22,277,501**

doses administered by  
commonwealth facilities

**+ 20,193**

recorded in the last 24 hours

**21,199,103** total vaccine doses  
administered in primary care settings

**1,078,398** total vaccine doses  
administered in aged care and disability  
settings



**37,706,061**

total vaccine  
doses administered nationally as at 14 November

**+ 61,360**

recorded in the last 24 hours

NSW	Jurisdictions	Commonwealth
Cumulative	4,180,939	8,569,543
Daily increase	973	2,210

VIC	Jurisdictions	Commonwealth
Cumulative	4,685,095	5,710,874
Daily increase	5,083	4,568

QLD	Jurisdictions	Commonwealth
Cumulative	2,732,277	3,967,471
Daily increase	23,003	7,736

WA	Jurisdictions	Commonwealth
Cumulative	1,585,468	1,804,219
Daily increase	4,177	3,331

TAS	Jurisdictions	Commonwealth
Cumulative	439,051	358,911
Daily increase	1,625	642

SA	Jurisdictions	Commonwealth
Cumulative	1,128,380	1,258,880
Daily increase	5,284	1,543

ACT	Jurisdictions	Commonwealth
Cumulative	465,222	465,250
Daily increase	590	148

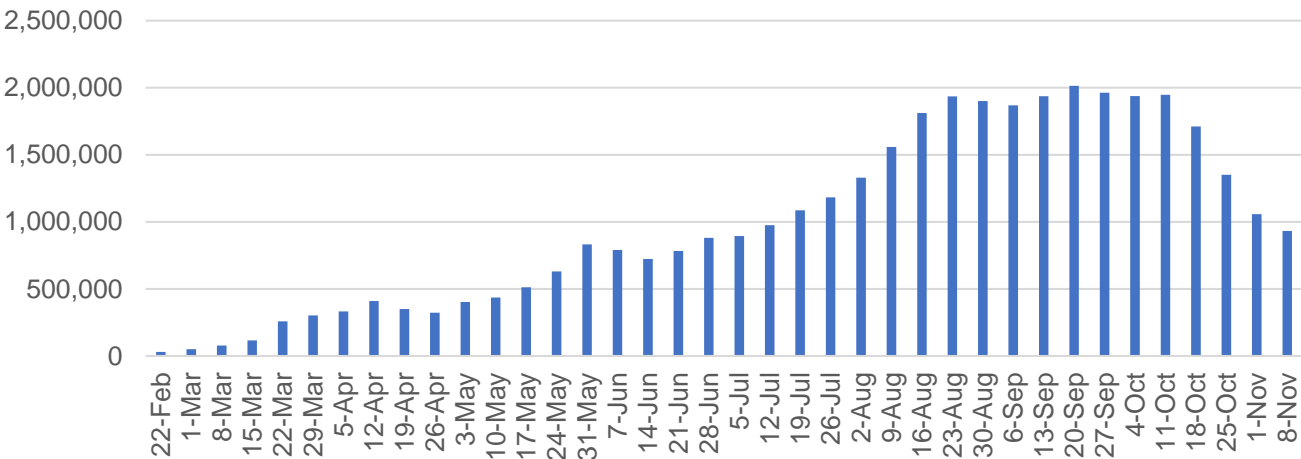
NT	Jurisdictions	Commonwealth
Cumulative	212,128	142,353
Daily increase	432	15

# Vaccine milestone charts

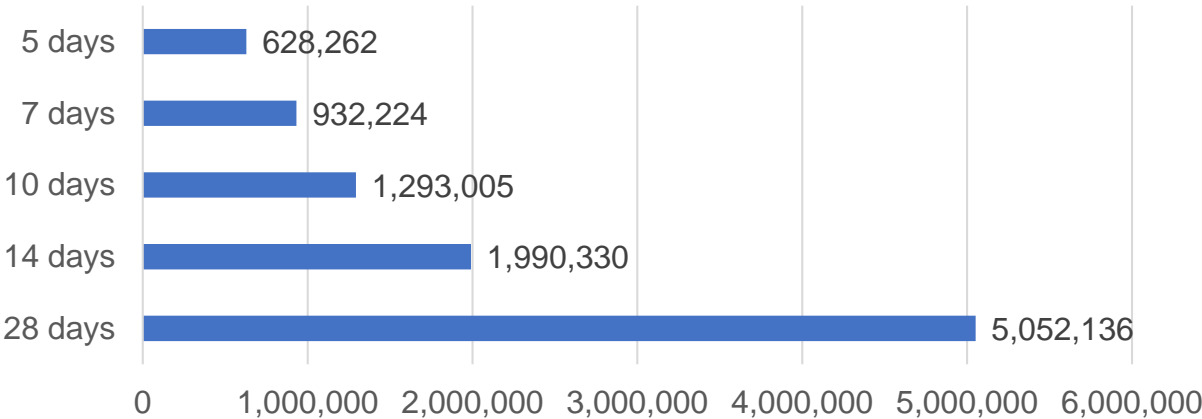
Data as at:  
14 Nov 2021

Australia's COVID-19  
Vaccine Roadmap

Doses Administered by Week

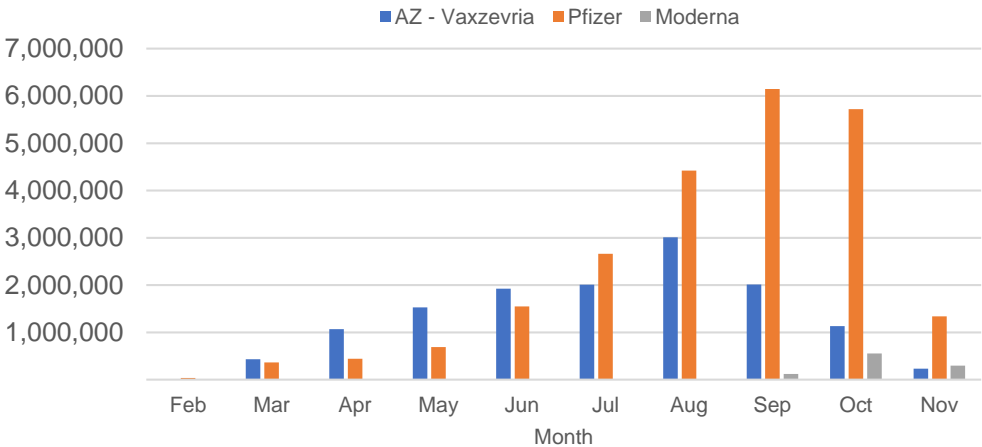


Doses Reported

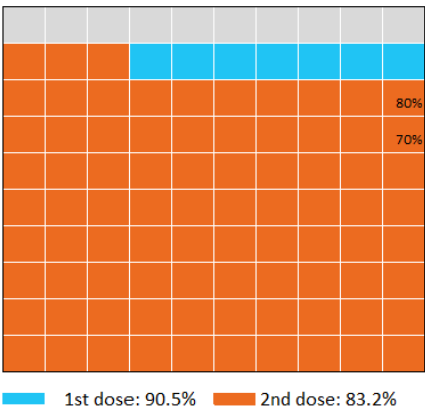


\*Sourced from the Australian Immunisation Register.

Doses by administration month and vaccine type



Eligible population percentage coverage



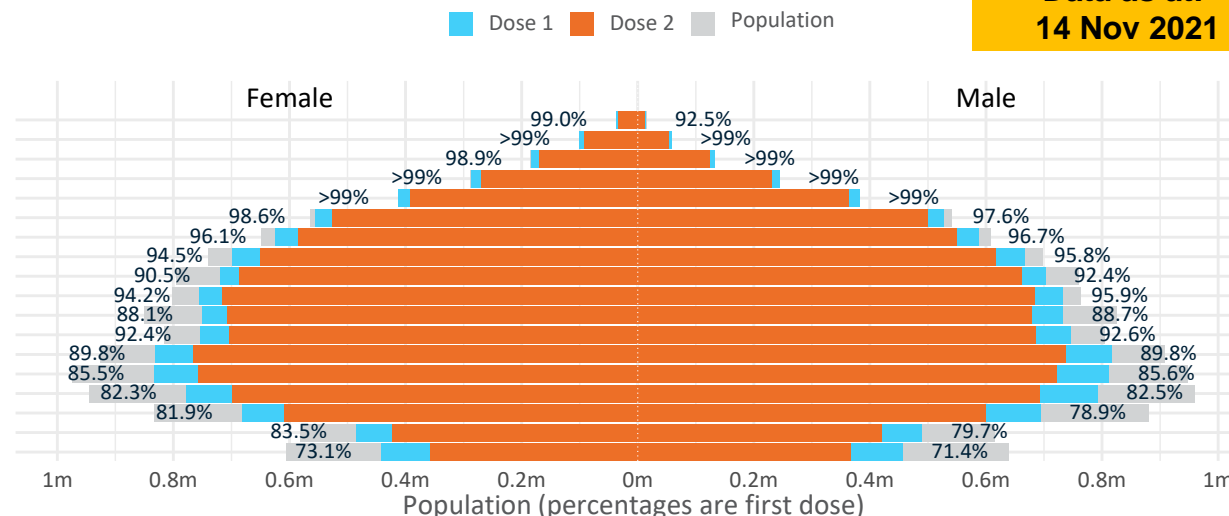
\*Each square represents 1% of the national population.  
Squares are filled as milestones are achieved.

Data as at:  
14 Nov 2021

# Doses by age and sex

First and second doses by age and sex

Age	Dose 1	Dose 2
95+	51,446 (97.2%)	46,107 (87.1%)
90-94	159,319 (>99%)	146,311 (92.4%)
85-89	317,194 (>99%)	295,139 (93.3%)
80-84	531,203 (>99%)	500,791 (94.8%)
75-79	795,325 (>99%)	755,129 (97.6%)
70-74	1,084,836 (98.2%)	1,027,225 (93.0%)
65-69	1,213,690 (96.5%)	1,135,638 (90.3%)
60-64	1,368,042 (95.2%)	1,268,488 (88.3%)
55-59	1,423,753 (91.5%)	1,349,339 (86.7%)
50-54	1,488,269 (95.1%)	1,399,869 (89.5%)
45-49	1,484,275 (88.5%)	1,386,346 (82.7%)
40-44	1,500,891 (92.6%)	1,390,895 (85.8%)
35-39	1,652,624 (90.1%)	1,506,700 (82.1%)
30-34	1,654,089 (86.0%)	1,485,186 (77.2%)
25-29	1,580,763 (82.9%)	1,397,808 (73.3%)
20-24	1,382,324 (80.7%)	1,212,454 (70.8%)
16-19	975,745 (81.6%)	844,177 (70.6%)
12-15	899,237 (72.3%)	724,475 (58.2%)



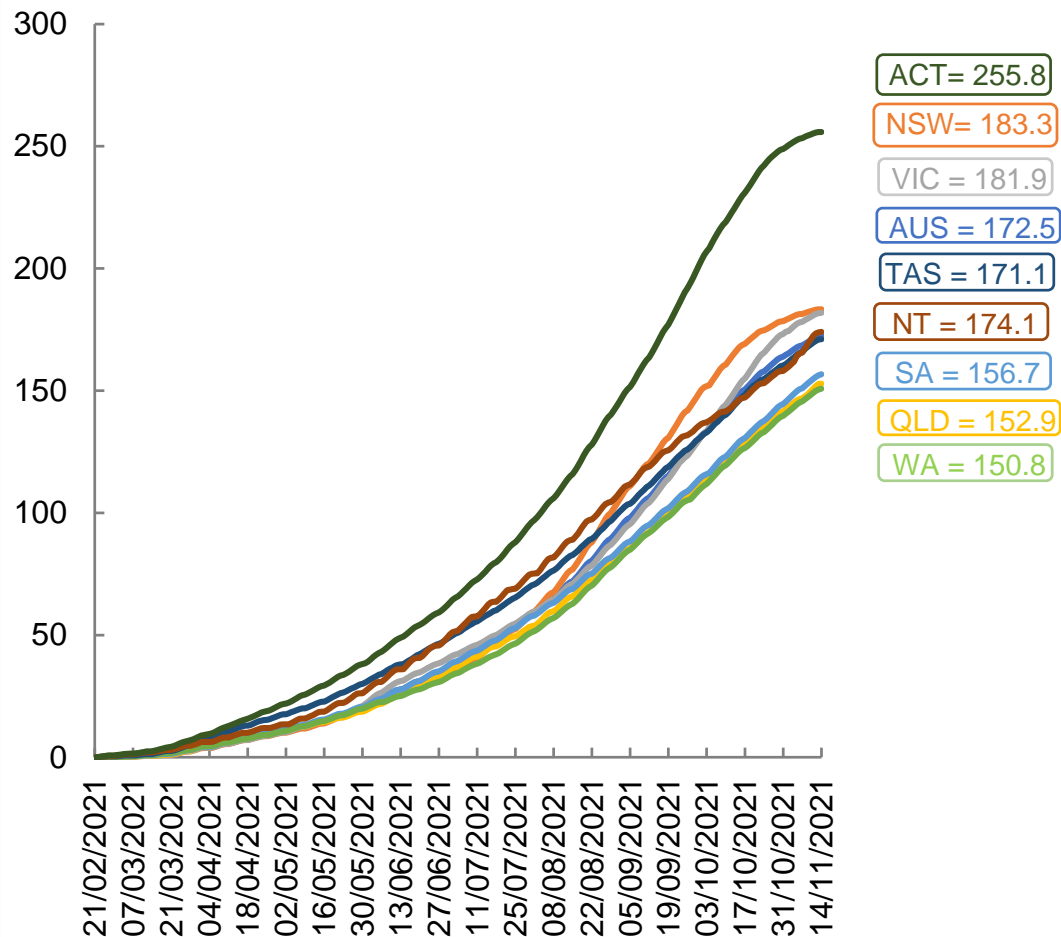
	AUS	ACT	NSW	NT	QLD	SA	TAS	VIC	WA
16 and over - dose 1	18,663,788	344,166	6,184,871	160,080	3,384,250	1,230,257	402,744	5,013,650	1,746,895
16 and over - dose 2	17,147,602	332,326	5,981,699	134,319	2,901,153	1,067,673	361,739	4,729,769	1,479,754
16 and over - population	20,619,959*	344,037	6,565,651	190,571	4,112,707	1,440,400	440,172	5,407,574	2,114,978
16 and over % with dose 1	90.51%	>99%	94.20%	84.00%	82.29%	85.41%	91.50%	92.72%	82.60%
16 and over % with dose 2	83.16%	96.60%	91.11%	70.48%	70.54%	74.12%	82.18%	87.47%	69.97%
50 and over - dose 1	8,433,077	133,263	2,758,447	54,689	1,620,657	628,309	209,244	2,156,996	816,832
50 and over - dose 2	7,924,036	129,445	2,683,007	49,252	1,473,606	565,457	192,404	2,054,875	730,241
50 and over - population	8,749,703	127,802	2,807,793	62,280	1,758,855	674,384	220,036	2,211,211	885,370
50 and over % with dose 1	96.38%	>99%	98.24%	87.81%	92.14%	93.17%	95.10%	97.55%	92.26%
50 and over % with dose 2	90.56%	>99%	95.56%	79.08%	83.78%	83.85%	87.44%	92.93%	82.48%
70 and over - dose 1	2,939,323	43,375	973,151	11,224	562,363	236,355	77,002	742,281	272,495
70 and over - dose 2	2,770,702	41,980	943,086	10,293	520,525	214,179	70,847	704,961	246,805
70 and over - population	2,934,706	39,946	962,606	12,343	577,767	240,514	77,155	743,519	280,281
70 and over % with dose 1	>99%	>99%	>99%	90.93%	97.33%	98.27%	>99%	>99%	97.22%
70 and over % with dose 2	94.41%	>99%	97.97%	83.39%	90.09%	89.05%	91.82%	94.81%	88.06%
12 to 15 - dose 1	899,237	19,576	314,685	8,309	157,603	48,931	17,500	258,408	67,817
12 to 15 - dose 2	724,475	18,324	286,692	5,828	105,836	30,536	12,110	219,340	41,487
12 to 15 - population	1,243,990	19,693	390,330	13,060	270,146	82,747	26,308	308,611	132,869
12 to 15 % with dose 1	72.29%	>99%	80.62%	63.62%	58.34%	59.13%	66.52%	83.73%	51.04%
12 to 15 % with dose 2	58.24%	93.05%	73.45%	44.62%	39.18%	36.90%	46.03%	71.07%	31.22%

\*National population will not equal sum of listed jurisdictions due to a small number of people counted in national population residing in some 'other' territories. Sum of state doses will not add to national total as some records are unable to be geocoded to a State or Territory.

Doses sourced from Australian Immunisation Register, population from ABS ERP June 2020

# Vaccinations by location

Cumulative total doses administered vs eligible state populations\*

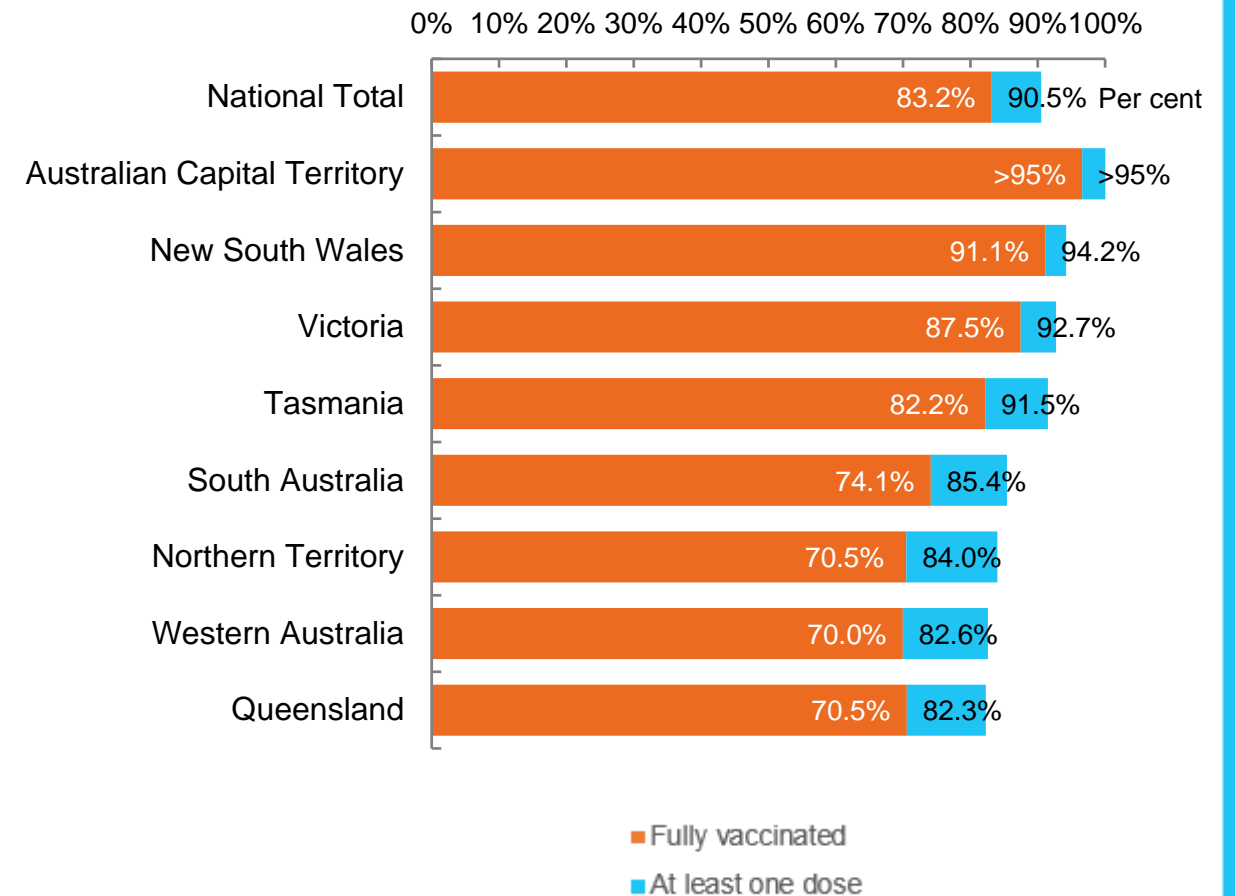


\*Not an indication of percentage vaccinated, numbers will exceed 100 due to multiple doses required per person of the population. All doses are included, including those for the 12-15 cohort, and are based on vaccination provider location.

Data as at:  
14 Nov 2021

Australia's COVID-19  
Vaccine Roadmap

First and Second Doses by state of residence



# Aboriginal and Torres Strait Islander peoples

## Number of people vaccinated

Data as at:  
09 Nov 2021  
Updated weekly

Australia's COVID-19  
Vaccine Roadmap



**352,289**

people over the age of 16  
have had at least one dose

**67.0%**

of people over the age of 16  
have had at least one dose



**291,171**

people over the age of 16  
are fully vaccinated

**55.3%**

of people over the age of 16 are  
fully vaccinated



**33,540  
(46.7%)**

people aged 12-15 years  
have had at least one dose

## 172 Aboriginal community controlled health services (ACCHS)

0#	50	26	40	12	3	21	18
<b>ACT</b>	<b>NSW</b>	<b>NT</b>	<b>QLD</b>	<b>SA</b>	<b>TAS</b>	<b>VIC</b>	<b>WA</b>

Medicare Address State <sup>##</sup>	Individuals Dose 1	Individuals Dose 1 %	Individuals Dose 2	Individuals Dose 2 %
Unknown	11,049	41.4%	7,527	28.1%
Australian Capital Territory	4,807	88.6%	4,498	82.7%
New South Wales	133,749	83.6%	123,270	76.9%
Northern Territory	30,991	67.5%	22,567	48.9%
Other Territories	148	91.1%	142	87.5%
Queensland	79,840	55.1%	61,183	42.1%
South Australia	14,809	57.5%	11,272	43.6%
Tasmania	12,821	74.7%	10,858	62.8%
Victoria	34,253	84.9%	29,810	73.6%
Western Australia	29,822	46.4%	20,044	31.0%
<b>Totals</b>	<b>352,289</b>	<b>67.0%</b>	<b>291,171</b>	<b>55.3%</b>

\*Identifying as Aboriginal and Torres Strait Islander is optional and the estimated population may be under reported.

\*\*Includes all Aboriginal and Torres Strait Islander peoples who have received a vaccination, not limited to those administered in an ACCHS setting

##ACCHS in the ACT are currently operating as a Commonwealth Vaccine Clinics so not included to avoid double counting

##The above table includes all identified Aboriginal and Torres Strait Islander people who are aged 16 and above by their state of residence.

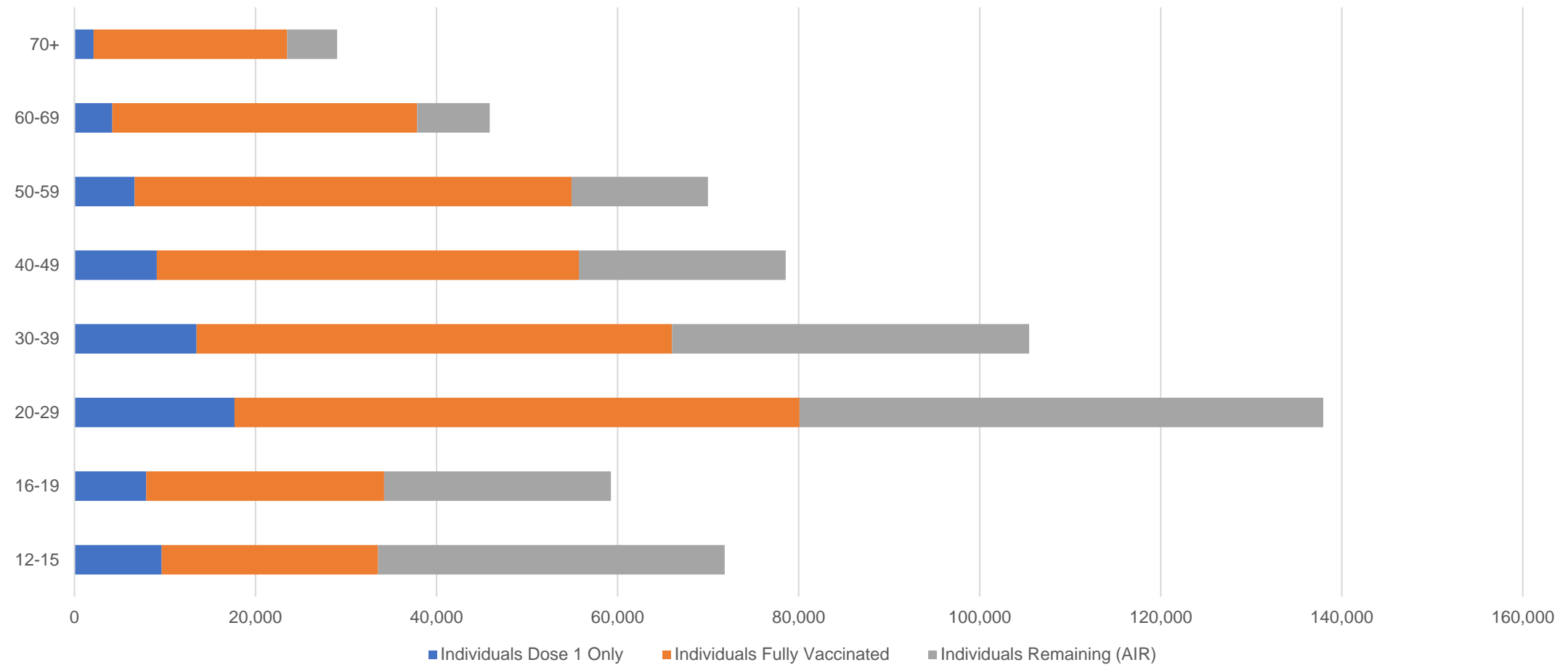


# Aboriginal and Torres Strait Islander peoples

## Number of people vaccinated by age

Data as at:  
09 Nov 2021  
Updated weekly

Australia's COVID-19  
Vaccine Roadmap



Source: Australian Immunisation Register

Data as at:  
14 Nov 2021

# Commonwealth primary care



## Primary care vaccine administration sites

<b>5,622</b>	<b>137</b>	<b>172</b>	<b>3,440</b>
GPs	CVCs	ACCHS	Pharmacies



**21,199,103** total vaccine doses administered  
primary care settings as at 14 November  
**+ 18,522** recorded in the last 24 hours

## Primary care vaccinations by provider type

	Doses administered	Daily increase	7 day increase
General Practice* includes other Commonwealth	19,165,925	14,077	420,805
Pharmacy	2,033,178	4,445	174,425



**139,318** doses administered to persons residing in other territories or with missing residential information

\*General practice includes Commonwealth Vaccination Clinics, Aboriginal Community Health Centres, Royal Flying Doctor Service and other Commonwealth vaccination facilities

Source: Australian Immunisation Register

Data as at:  
14 Nov 2021

# Commonwealth aged care and disability doses administered



**1,078,398** (+ 1,671 last 24 hours)

Total vaccine doses administered in aged care and disability facilities as at 14 November

Number of doses administered as part of the Commonwealth aged and disability care rollout

**NSW**  
**514,307**  
(+89 daily increase)

**VIC**  
**200,746**  
(+94 daily increase)

**QLD**  
**160,422**  
(+843 daily increase)

**WA**  
**74,989**  
(+394 daily increase)

**TAS**  
**17,670**  
(+2 daily increase)

**SA**  
**65,382**  
(+200 daily increase)

**ACT**  
**13,522**  
(+16 daily increase)

**NT**  
**6,067**  
(+6 daily increase)

**25,293**

doses administered to persons  
residing in other territories or with  
missing residential information

\*Sourced from the Australian Immunisation Register. Includes all persons vaccinated at participating residential aged care, disability and related industry settings.

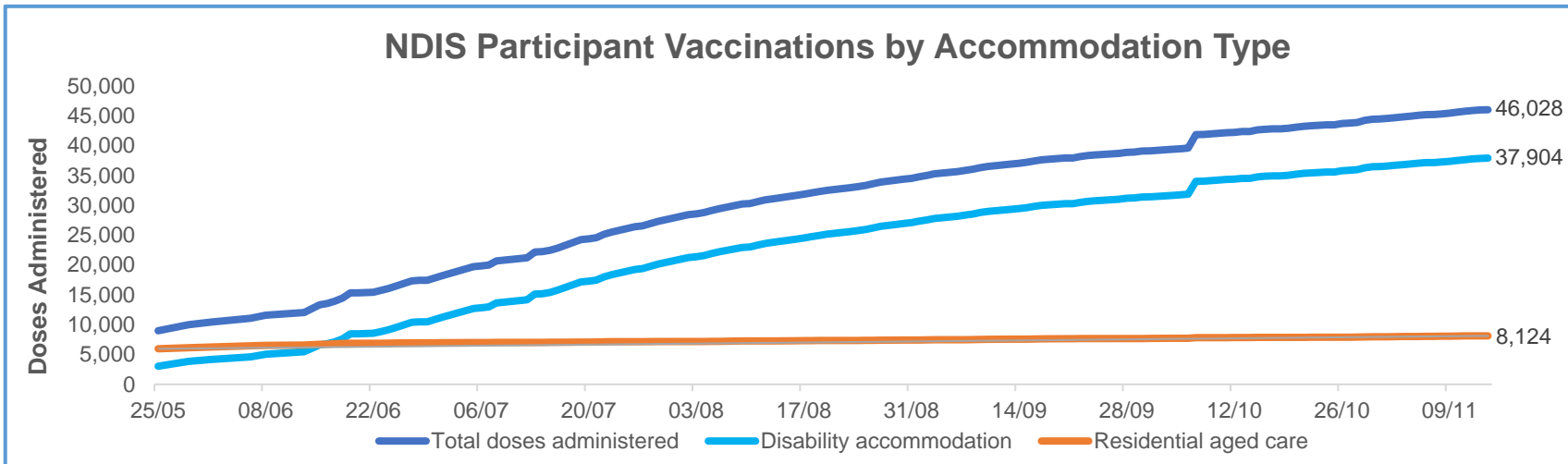
\*\*State level breakdown indicates the residential location and may not align to the state in which the vaccination occurred.

Source: Australian Immunisation Register

Data as at:  
14 Nov 2021\*

# Vaccination rate of people with disability and the disability workforce

## Phase 1a – People with disability living in shared accommodation



	Total people with at least one dose	People fully vaccinated	Total number of individuals in cohort	Total doses administered	% People with at least one dose	% People fully vaccinated
NDIS participants living in shared accommodation **	23,650	22,378	27,603	46,028	85.7%	81.1%
NDIS screened workers ***	199,288	186,247	235,211	385,535	84.7%	79.2%



\* Updates are available Monday to Friday on participants, and bi-weekly for workers, numbers may be up to four days old.

\*\* Shared accommodation means two or more people with disability living in shared residential accommodation and NDIS participants living in Residential Aged Care accommodation as per the eligibility criteria of Phase 1a.

\*\*\* Total number of workers within the NDIS Commission Worker Screening database who have ever been successfully screened and linked to an NDIS registered provider or participant.

Source: Linkage between National Disability Insurance Agency data, NDIS Quality and Safeguards Commission data and the Australian Immunisation Register.

## Residential aged care vaccination rollout

### Residential aged care facilities status

**100%** Commonwealth facilities visited (2,553 planned sites)

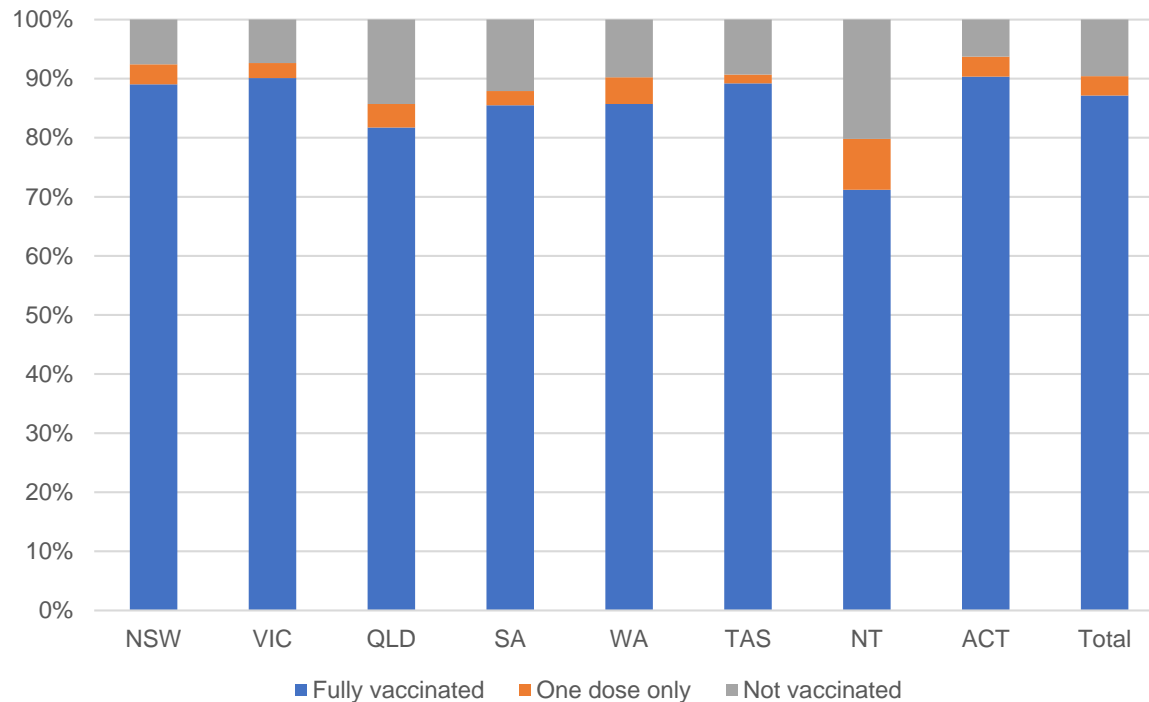
**161,166** People fully vaccinated

**167,262** People with at least one dose

Australia's COVID-19 Vaccine Roadmap

Data as at:  
14 Nov 2021

### Aged care resident vaccinations



### Aged care worker vaccinations

Jurisdictions	Total workers with at least one dose	Workers fully vaccinated	% Workers with at least one dose	% Workers fully vaccinated
NSW	78,643	77,708	99.6%	98.4%
VIC	71,348	68,721	99.8%	96.1%
QLD	48,656	47,418	99.9%	97.3%
SA	27,436	26,260	100.0%	95.7%
WA	23,677	22,205	99.9%	93.7%
TAS	7,666	7,327	100.0%	95.6%
NT	822	817	99.5%	98.9%
ACT	2,959	2,897	99.9%	97.8%
Total	261,207	253,353	99.8%	96.8%

Source: My Aged Care Portal staff vaccination progress

\*\*Resident vaccination information is reported manually by service providers

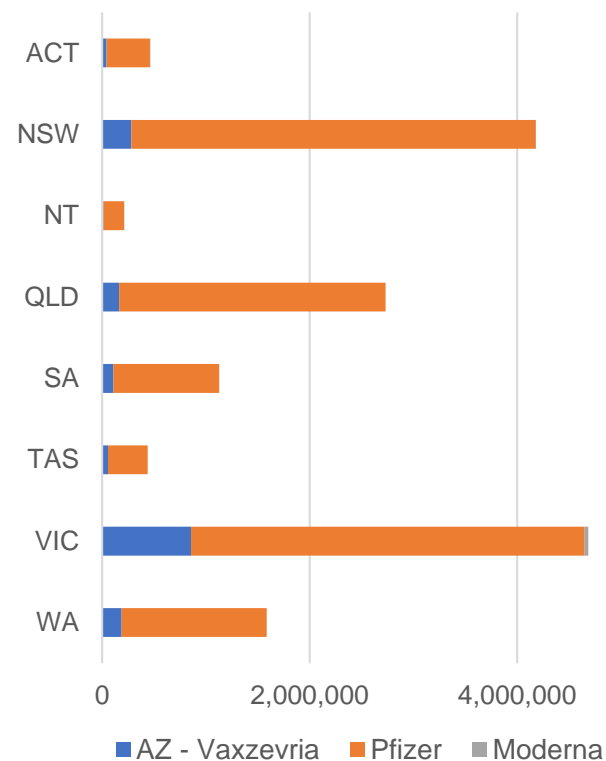
\*Status updates are provided by facilities at least once per week. Reporting is updated Monday to Friday to encompass different facility updates being made on different days.

Data is sourced directly from Aged Care Service Providers and is not drawn or closely aligned with data from AIR due to inconsistencies and potential lags in uploading of records.

Data as at:  
14 Nov 2021

# Jurisdiction administered

Total vaccine doses administered in State and Territory clinics as at 14 November



**15,428,560** total vaccine doses administered  
in State and Territory clinics as at 14 November  
+ **41,167** recorded in the last 24 hours  
+ **322,455** recorded in the last 7 days

**NSW**  
**4,180,939**  
(+973 daily increase)

**VIC**  
**4,685,095**  
(+5,083 daily increase)

**QLD**  
**2,732,277**  
(+23,003 daily increase)

**WA**  
**1,585,468**  
(+4,177 daily increase)

**TAS**  
**439,051**  
(+1,625 daily increase)

**SA**  
**1,128,380**  
(+5,284 daily increase)

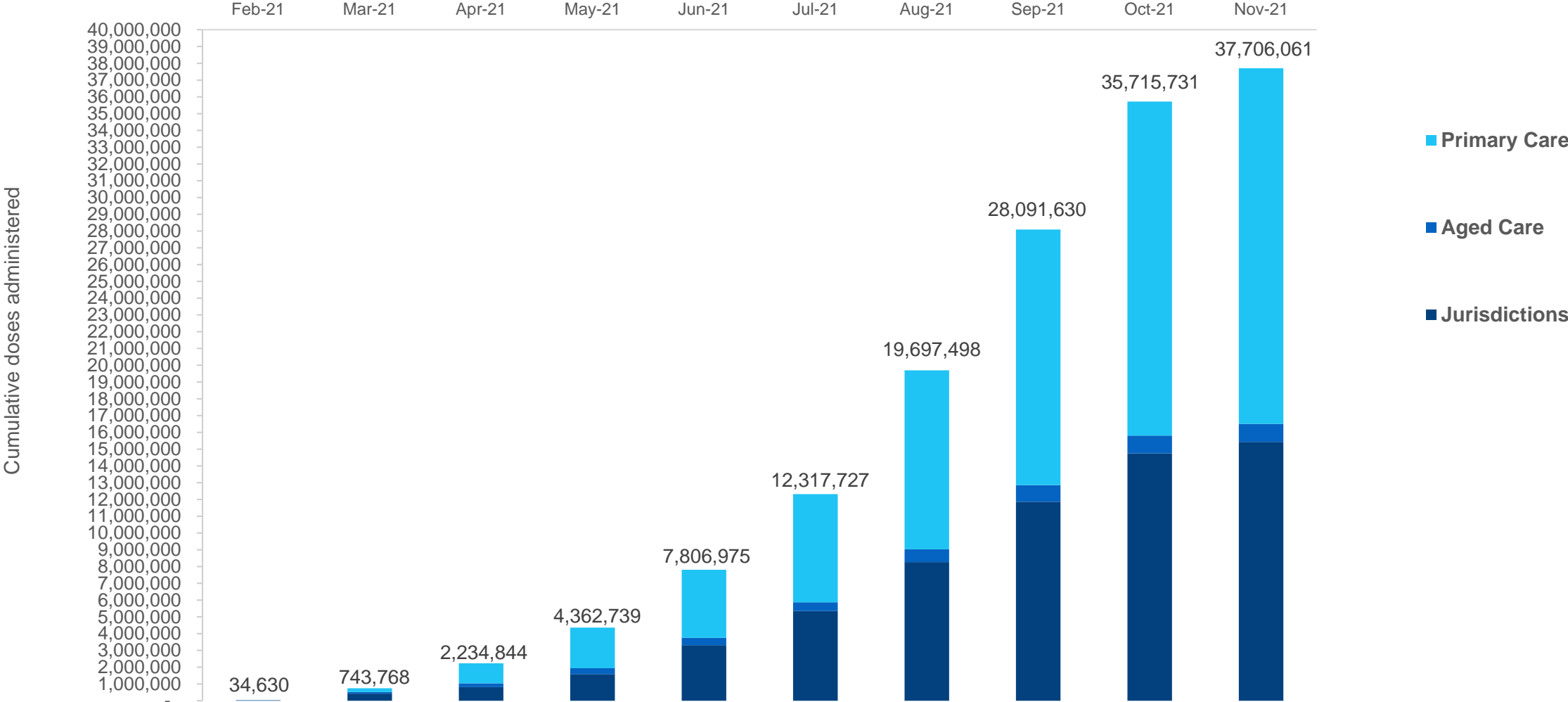
**ACT**  
**465,222**  
(+590 daily increase)

**NT**  
**212,128**  
(+432 daily increase)

\*Sourced from the Australian Immunisation Register and self-reported data. Numbers are calculated as difference in daily cumulative reported numbers to allow for historical corrections in all self-reported data sources.

# Cumulative doses administered by channel

Data as at:  
14 Nov 2021



Source: Australian Immunisation Register

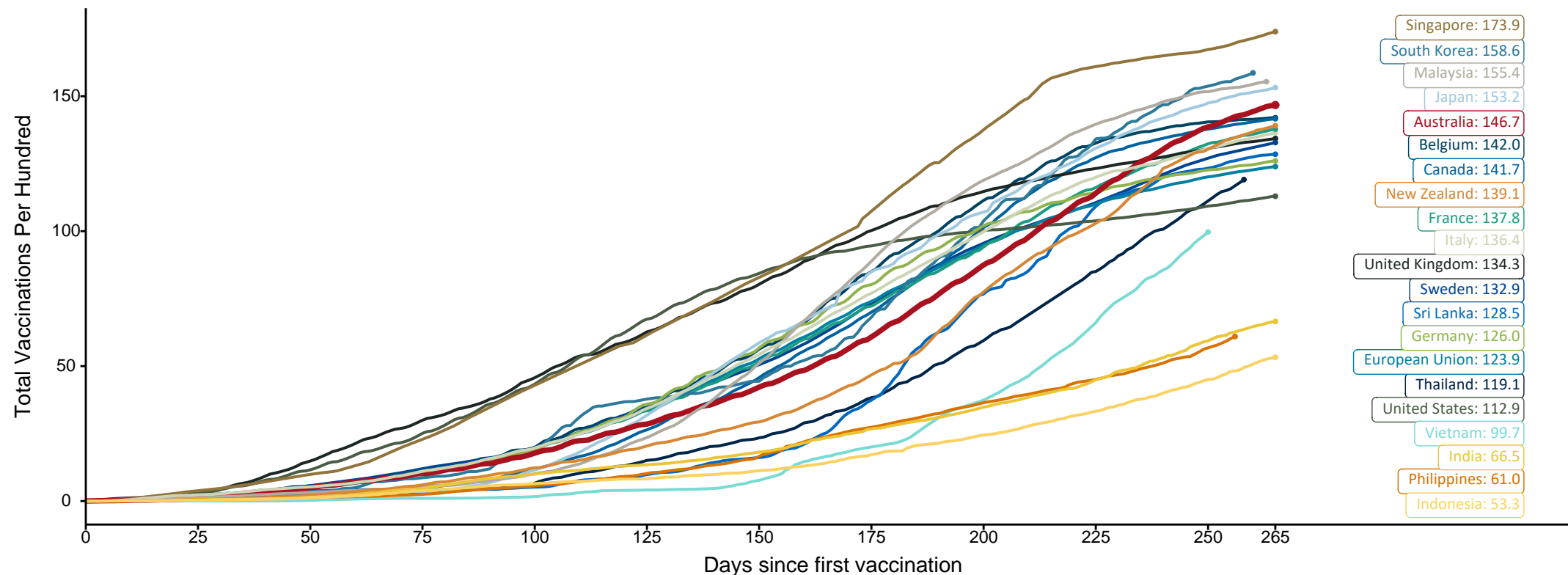


# Doses at equivalent stages of rollout (Day 265)

Data as at:  
14 Nov 2021

The x-axis is truncated at the length of Australia's vaccination program. Countries with intermittent reporting have had their doses per 100 imputed to Australia's current stage of rollout. Israel excluded as it is beyond scale of the graph

Cumulative doses administered (14 Nov): **37,706,061**



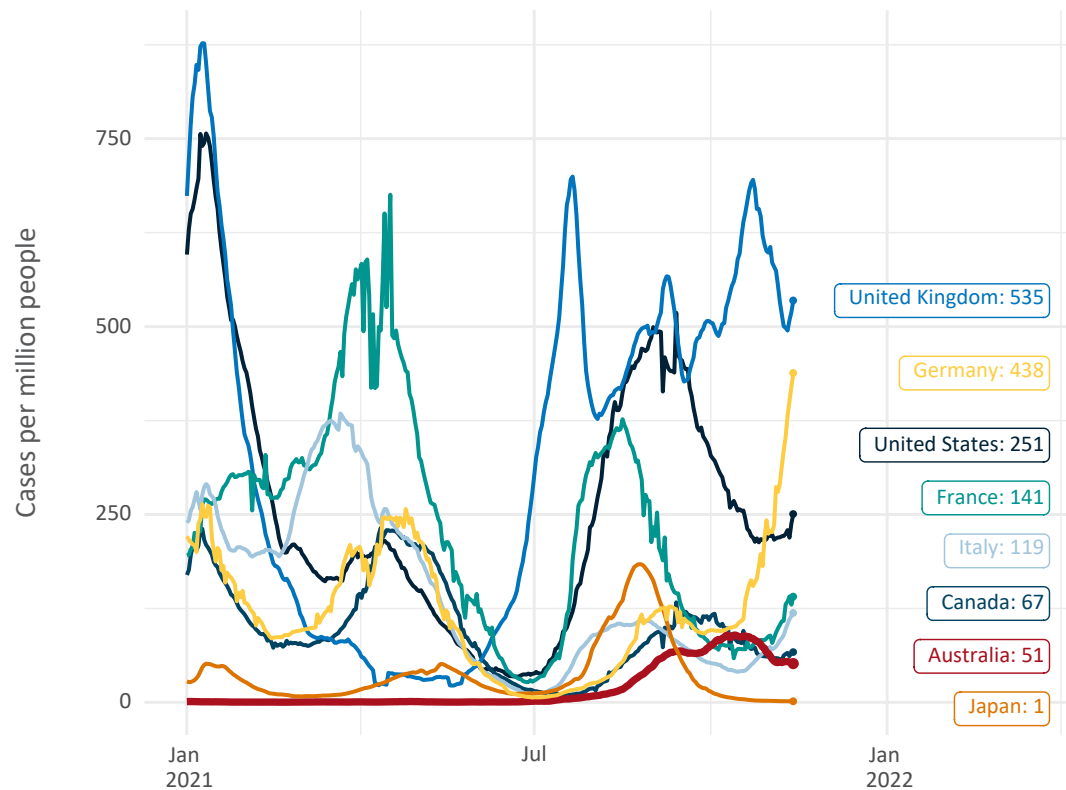
Note: From 15 September 2021, data for Australia includes all doses administered to people 12 and over. Prior to 15 September, data was for 16 and over  
Source: Department of Health (Australia), Our World in Data (international)  
Latest data: 14 November



# International data – COVID-19

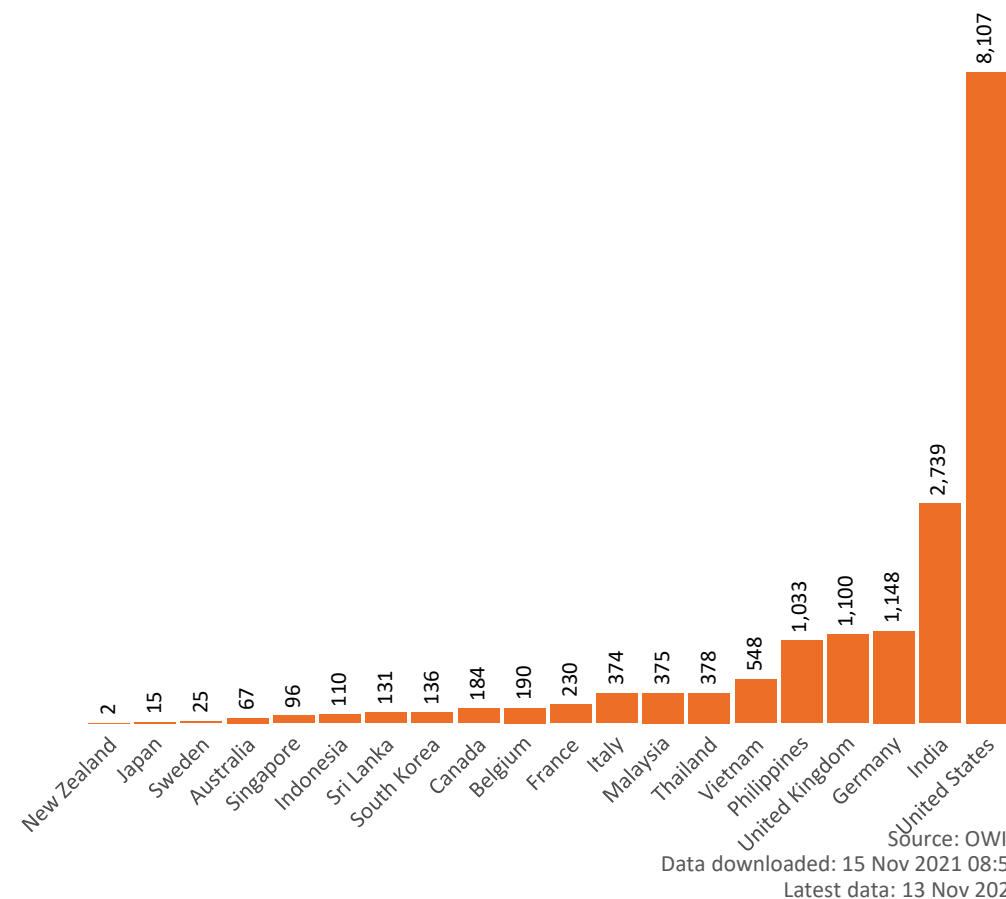
Data as at:  
14 Nov 2021

New daily cases per million in 2021, Australia and G7 countries  
Smoothed - 7 day average



Source: OWID  
Data downloaded: 15 Nov 2021 08:52  
Latest data: 13 Nov 2021

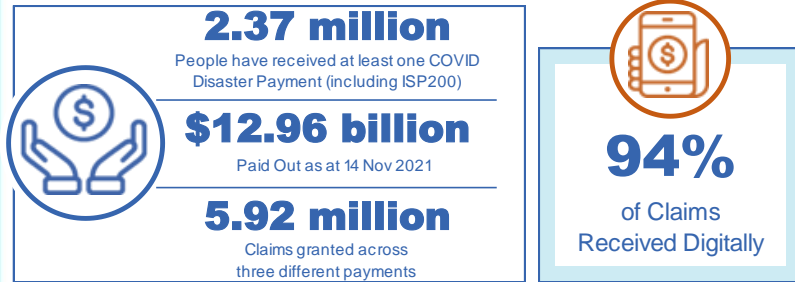
COVID-19 deaths in past 7 days - Australia and select countries



Source: OWID  
Data downloaded: 15 Nov 2021 08:52  
Latest data: 13 Nov 2021

Data as at midnight:  
14 Nov 2021

# Pandemic Response Payments (Current)



<b>COVID Disaster Payment:</b>	5.72 million claims received - 2.19 million individuals paid a total of \$12.52 billion.
<b>\$200 Income Support Payment:</b>	346,000 claims received - 183,000 individuals paid a total of \$267.92 million.
<b>Pandemic Leave Disaster Payment:</b>	128,000 claims received - 109,000 individuals paid a total of \$178.63 million.



## COVID Disaster Payment

assisting during a lockdown event in a Commonwealth hotspot.

## Income Support Payment \$200

for income support recipients who lost at least 8 hours of work.

## Pandemic Leave Disaster Payment

for those who have to self-isolate, quarantine or care.

For more information visit:  
[servicesaustralia.gov.au](https://servicesaustralia.gov.au)

## CURRENT COVID-19 DISASTER PAYMENTS

### New South Wales

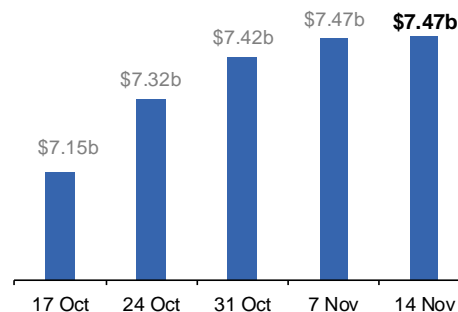
Lockdown from 24 Jun to 10 Oct  
Claiming period ends 27 Nov

**1.08m people have received at least one COVID Disaster Payment.**

**\$7.47b paid out as at 14 Nov 2021.**

**\$9m paid in initial and reoccurring payments in the week ending 14 Nov 2021.**

Cumulative payments made by State since activation on 1 Jul 2021.



### Victoria

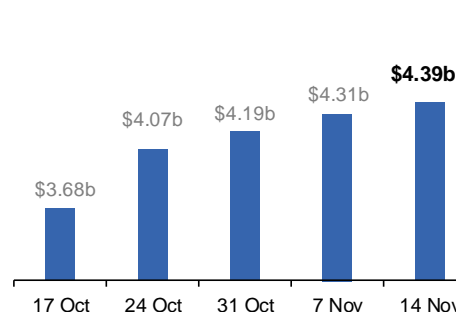
Lockdown (#6) since 6 Aug to 28 Oct  
Claiming period ends 9 Dec

**743,000 people have received at least one COVID Disaster Payment.**

**\$4.39b paid out as at 14 Nov 2021.**

**\$82m paid in initial and reoccurring payments in the week ending 14 Nov 2021.**

Cumulative payments made by State since activation on 8 Jun 2021.



### Australian Capital Territory

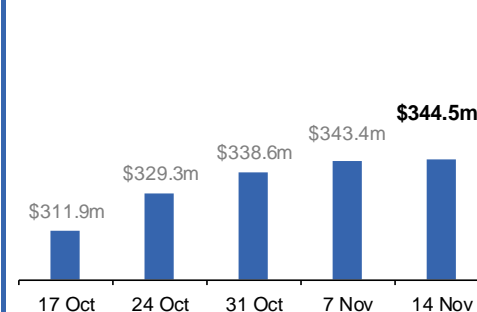
Lockdown since 12 Aug to 14 Oct  
Claiming period ends 25 Nov

**65,000 people have received at least one COVID Disaster Payment.**

**\$344.5m paid out as at 14 Nov 2021.**

**\$1.0m paid in initial and reoccurring payments in the week ending 14 Nov 2021.**

Cumulative payments made by State since activation on 20 Aug 2021.



### Northern Territory

Lockdown (#2) from 5 Nov to 7 Nov  
Claiming period ends 2 Dec

**5,900 people have received at least one COVID Disaster Payment.**

**\$3.9m paid out as at 14 Nov 2021.**

**\$133,000 paid in initial payments in the week ending 14 Nov 2021.**

Cumulative payments made by State since activation on 25 Aug 2021.



# Pandemic Response Payments (Closed Events)

Data as at midnight:  
14 Nov 2021

## CLOSED COVID-19 DISASTER PAYMENTS


### Tasmania

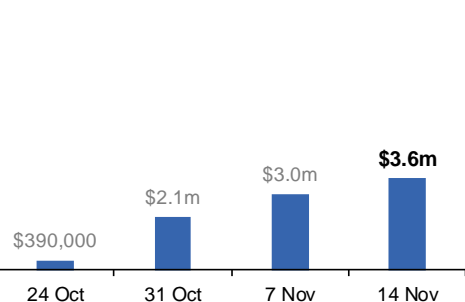
Lockdown from 15 Oct to 18 Oct  
Claiming period ended 12 Nov

**6,800 people have received at least one COVID Disaster Payment.**

**\$3.6m paid out as at 14 Nov 2021.**

**\$565,000 paid in initial payments in the week ending 14 Nov 2021.**

 Cumulative payments made by State since activation on 22 Oct 2021.




### Queensland

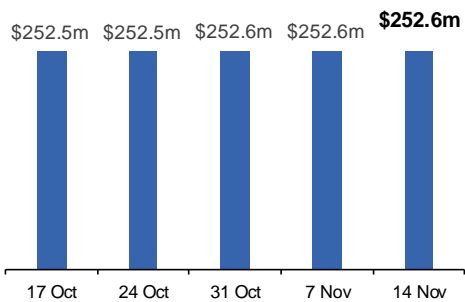
Lockdown from 31 Jul to 11 Aug  
Claiming period ended 28 Aug

**196,000 people have received at least one COVID Disaster Payment.**

**\$252.6m paid out as at 14 Nov 2021.**

**\$14,000 paid in initial and reoccurring payments in the week ending 14 Nov 2021.**

 Cumulative payments made by State since activation on 7 Aug 2021.




### South Australia

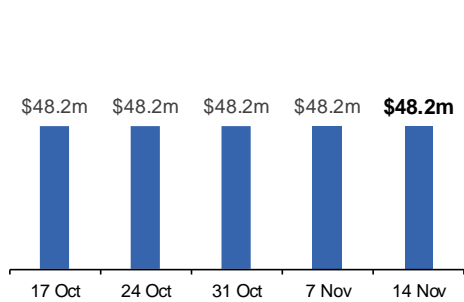
Lockdown from 21 to 27 Jul  
Claiming period ended 17 Aug

**86,000 people have received at least one COVID Disaster Payment.**

**\$48.2m paid out as at 14 Nov 2021.**

**Nil payments made in the week ending 14 Nov 2021.**

 Cumulative payments made by State since activation on 28 Jul 2021.



# Administration and Utilisation

## Doses as at Week 38

	Ordered	Available	Administered	Available minus Administered	Estimated Dose Utilisation %
	Up to Week 38	Delivered up to Week 37 including redistributions	Up to Week 38		(see note)
NSW	4,761,410	4,761,410	4,180,939	580,471	98%
VIC	5,767,154	5,660,034	4,685,095	974,939	93%
QLD	3,415,390	3,335,750	2,732,277	603,473	92%
WA	1,824,898	1,802,358	1,585,468	216,890	98%
SA	1,568,820	1,467,280	1,128,380	338,900	87%
TAS	458,230	458,230	439,051	19,179	Fully utilised
NT	265,524	248,316	212,128	36,188	95%
ACT	502,856	502,856	465,222	37,634	Fully utilised
Jurisdiction delivered total	18,564,282	18,236,234	15,428,560	2,807,674	95%
Commonwealth Aged Care & Disability	1,091,878	1,083,382	1,078,398	4,984	N/A
Commonwealth Primary Care & Other	28,284,532	27,433,668	21,199,103	6,234,565	87%
Total	47,940,692	46,753,284	37,706,061	9,047,223	91%

### About this data

- Ordered – Total doses delivered to sites. Based on logistics provider data. This figure includes doses allocated for administration in the coming week.
- Available – total doses that could have been administered to date, less doses re-distributed from States & Territories to Primary Care or Aged Care & Disability (i.e. does not include those deliveries recently received, and intended for use in the coming week).
- Administered – Doses administered as at 14 November 2021.
- The dose utilisation is calculated based on the total doses administered and a small % wastage in line with international standards in relation to total available doses.
- For Aged Care & Disability, the doses available for administration is for the full period (Weeks 1-38).
- Aged Care & Disability utilisation is not provided as the in-reach rollout is demand-based, with vaccines ordered based on resident numbers.