



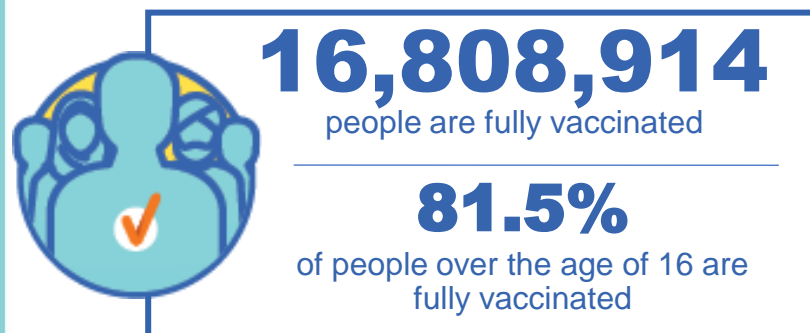
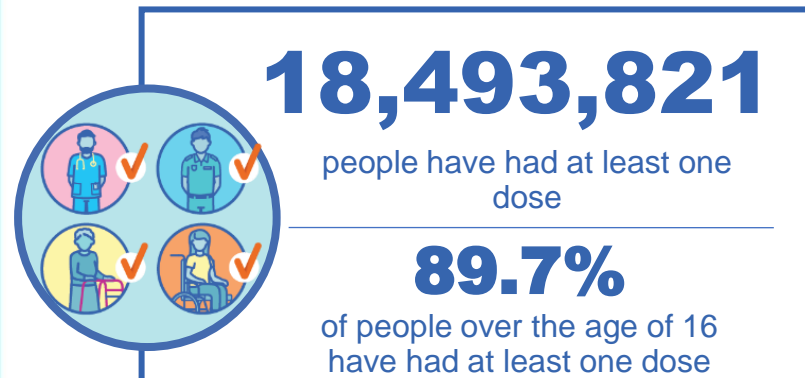
Australian Government
Operation COVID Shield

COVID-19 Vaccine Roll-out

10 November 2021

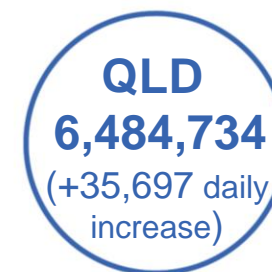
Data as at:
09 Nov 2021

Total vaccine doses



37,077,799 total vaccine doses administered nationally as at 09 November

+149,424 recorded in the last 24 hours



*Administration state breakdown indicates state in which a vaccine was administered

**Overall dose count includes instances of more than two doses per person in a small number of cases.

Source: Australian Immunisation Register

Data as at:
09 Nov 2021

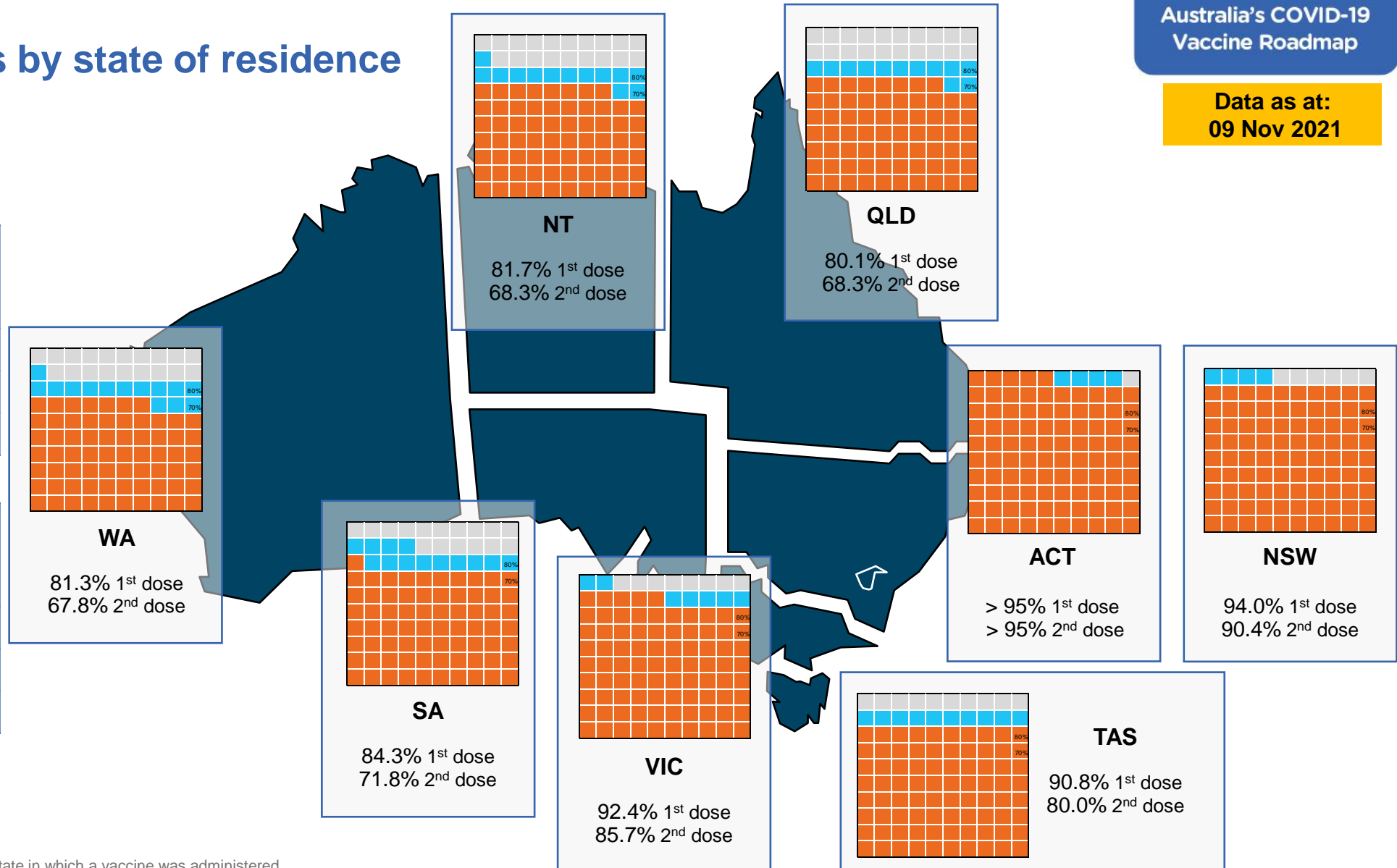
Vaccinations by state of residence

First doses

Age	Today	4 weeks ago	8 weeks ago
16+	89.7%	83.8%	70.1%
50+	>95%	92.7%	85.6%
70+	>95%	>95%	92.9%

Fully vaccinated

Age	Today	4 weeks ago	8 weeks ago
16+	81.5%	65.2%	44.8%
50+	89.3%	78.5%	64.4%
70+	93.3%	84.5%	73.7%



*Residential state may differ from the state in which a vaccine was administered

Commonwealth and Jurisdiction vaccine doses administered

Data as at:
09 Nov 2021



37,077,799 total vaccine
doses administered nationally as at 09 November
+ 149,424 recorded in the last 24 hours



15,199,450
doses administered by state
and territory facilities
+ 46,242
recorded in the last 24 hours



21,878,349
doses administered by
commonwealth facilities
+ 103,182
recorded in the last 24 hours

20,812,031 total vaccine doses
administered in primary care settings
1,066,318 total vaccine doses
administered in aged care and disability
settings

NSW	Jurisdictions	Commonwealth
Cumulative	4,165,292	8,498,949
Daily increase	5,313	22,477

VIC	Jurisdictions	Commonwealth
Cumulative	4,641,061	5,611,169
Daily increase	10,991	27,487

QLD	Jurisdictions	Commonwealth
Cumulative	2,643,763	3,840,971
Daily increase	9,128	26,569

WA	Jurisdictions	Commonwealth
Cumulative	1,555,597	1,750,124
Daily increase	6,454	12,916

TAS	Jurisdictions	Commonwealth
Cumulative	430,574	350,318
Daily increase	3,671	2,251

SA	Jurisdictions	Commonwealth
Cumulative	1,098,480	1,228,226
Daily increase	6,574	7,456

ACT	Jurisdictions	Commonwealth
Cumulative	458,991	461,231
Daily increase	1,968	2,538

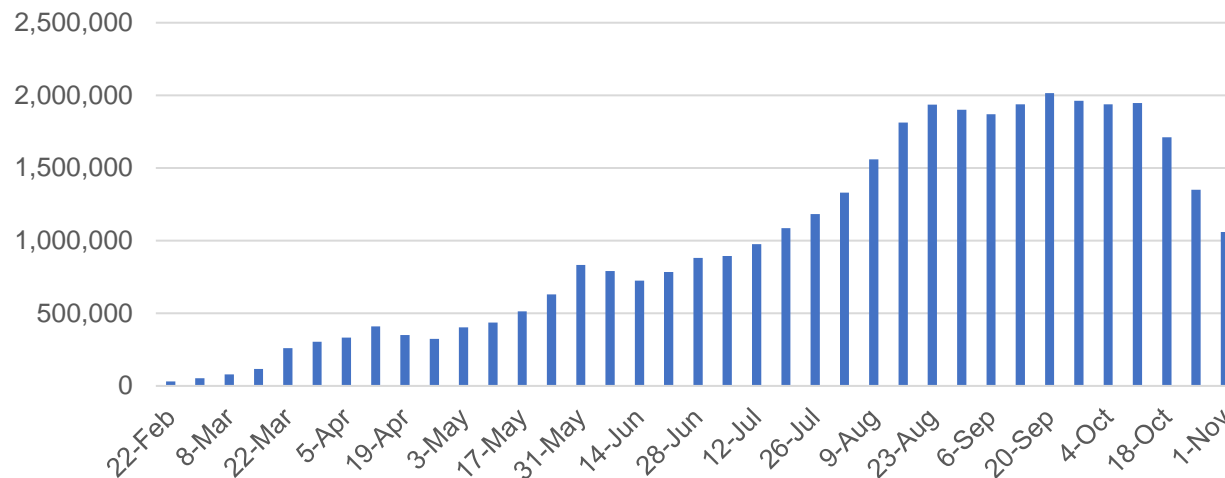
NT	Jurisdictions	Commonwealth
Cumulative	205,692	137,361
Daily increase	2,143	1,488

Vaccine milestone charts

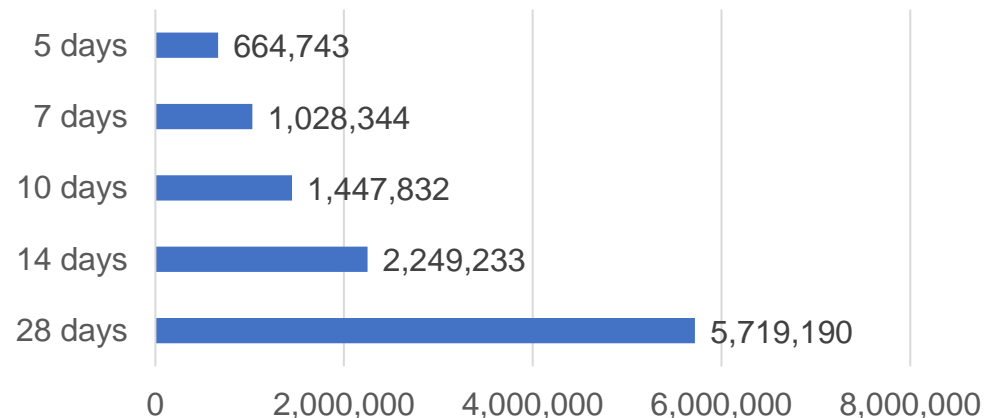
Data as at:
09 Nov 2021

Australia's COVID-19
Vaccine Roadmap

Doses Administered by Week

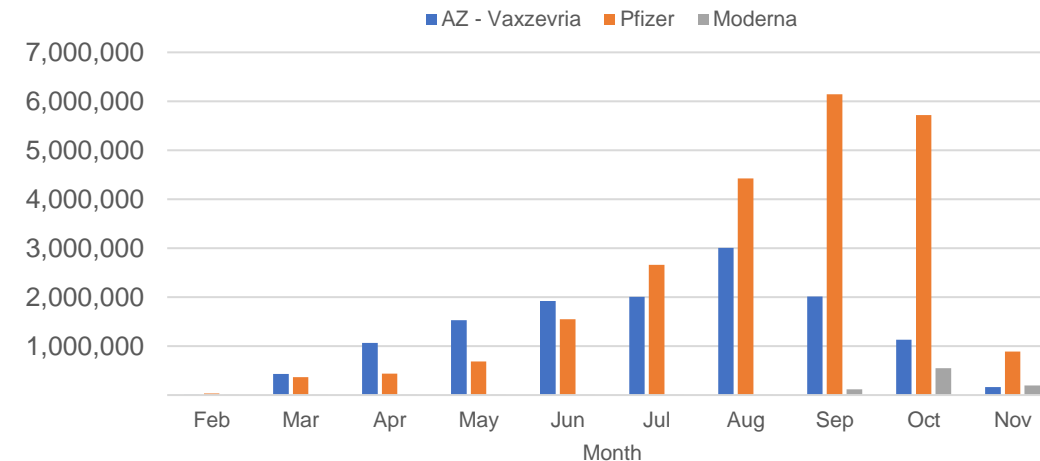


Doses Reported

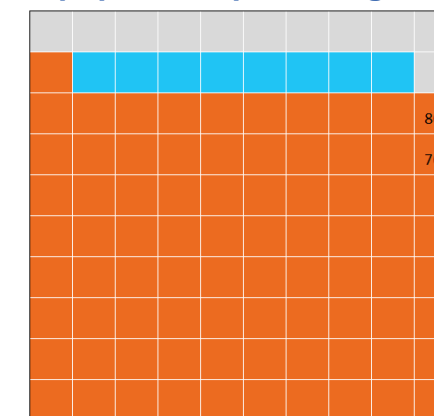


*Sourced from the Australian Immunisation Register.

Doses by administration month and vaccine type



Eligible population percentage coverage



1st dose: 89.7% 2nd dose: 81.5%

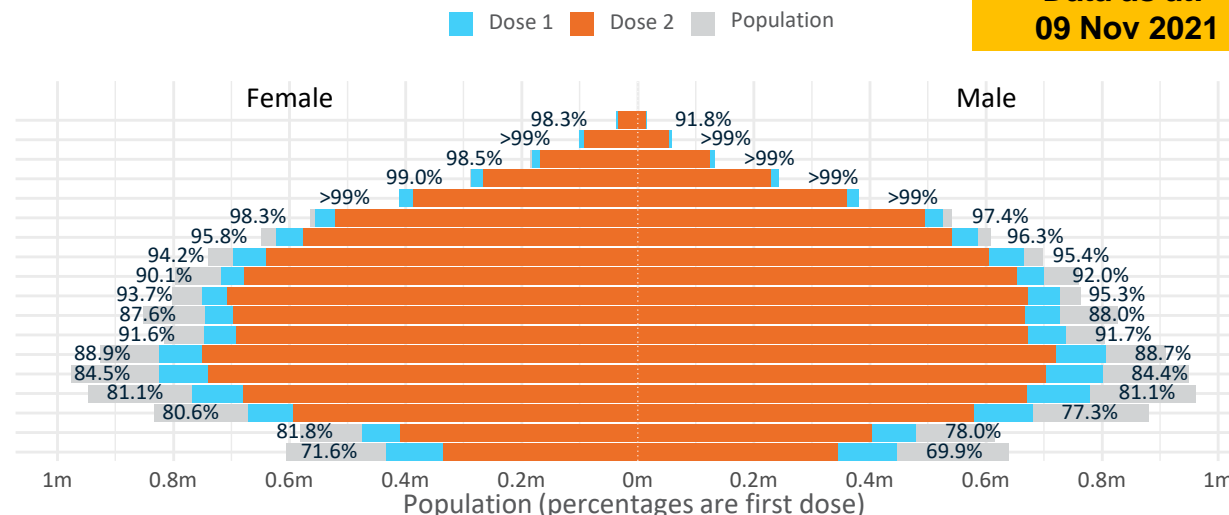
*Each square represents 1% of the national population.
Squares are filled as milestones are achieved.

Data as at:
09 Nov 2021

Doses by age and sex

First and second doses by age and sex

Age	Dose 1	Dose 2
95+	51,082 (96.5%)	45,438 (85.9%)
90-94	158,571 (>99%)	144,448 (91.2%)
85-89	315,890 (>99%)	291,450 (92.2%)
80-84	529,434 (>99%)	494,955 (93.7%)
75-79	792,385 (>99%)	745,898 (96.4%)
70-74	1,082,529 (98.0%)	1,015,353 (91.9%)
65-69	1,209,841 (96.2%)	1,118,175 (88.9%)
60-64	1,362,820 (94.9%)	1,245,519 (86.7%)
55-59	1,417,037 (91.1%)	1,332,456 (85.7%)
50-54	1,478,949 (94.5%)	1,379,440 (88.2%)
45-49	1,473,375 (87.9%)	1,363,824 (81.3%)
40-44	1,487,252 (91.8%)	1,365,935 (84.3%)
35-39	1,634,178 (89.1%)	1,472,511 (80.2%)
30-34	1,631,974 (84.8%)	1,447,473 (75.2%)
25-29	1,556,070 (81.6%)	1,357,926 (71.2%)
20-24	1,357,467 (79.3%)	1,176,025 (68.7%)
16-19	954,967 (79.9%)	812,088 (67.9%)
12-15	880,121 (70.7%)	678,267 (54.5%)



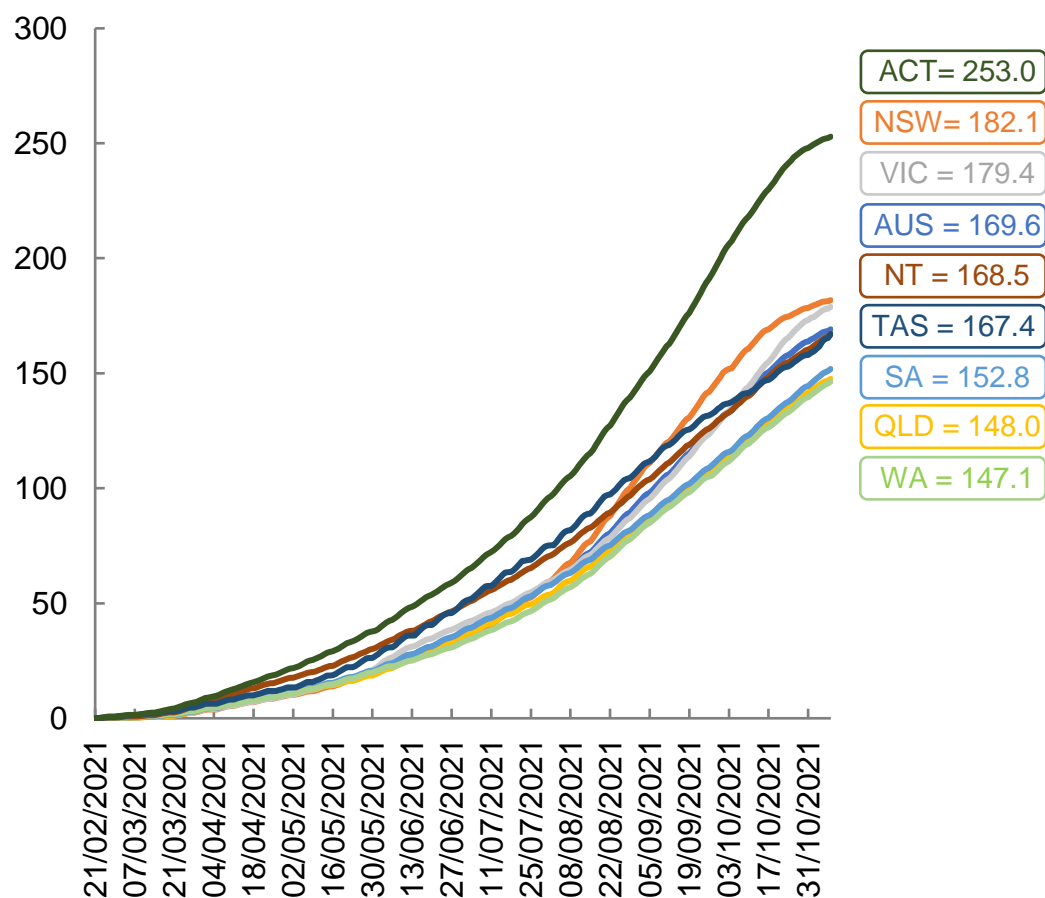
	AUS	ACT	NSW	NT	QLD	SA	TAS	VIC	WA
16 and over - dose 1	18,493,821	343,499	6,172,851	155,752	3,294,389	1,214,530	399,847	4,998,751	1,720,471
16 and over - dose 2	16,808,914	329,246	5,932,584	130,186	2,809,513	1,034,656	352,087	4,632,226	1,434,936
16 and over - population	20,619,959*	344,037	6,565,651	190,571	4,112,707	1,440,400	440,172	5,407,574	2,114,978
16 and over % with dose 1	89.69%	>99%	94.02%	81.73%	80.10%	84.32%	90.84%	92.44%	81.35%
16 and over % with dose 2	81.52%	95.70%	90.36%	68.31%	68.31%	71.83%	79.99%	85.66%	67.85%
50 and over - dose 1	8,398,538	133,109	2,754,700	53,811	1,606,180	624,496	208,676	2,151,917	811,525
50 and over - dose 2	7,813,132	128,556	2,664,345	48,196	1,444,152	553,619	189,185	2,024,441	716,171
50 and over - population	8,749,703	127,802	2,807,793	62,280	1,758,855	674,384	220,036	2,211,211	885,370
50 and over % with dose 1	95.99%	>99%	98.11%	86.40%	91.32%	92.60%	94.84%	97.32%	91.66%
50 and over % with dose 2	89.30%	>99%	94.89%	77.39%	82.11%	82.09%	85.98%	91.55%	80.89%
70 and over - dose 1	2,929,891	43,304	971,363	11,090	559,602	235,259	76,797	740,007	271,389
70 and over - dose 2	2,737,542	41,683	936,358	10,087	513,015	210,568	69,810	695,154	243,047
70 and over - population	2,934,706	39,946	962,606	12,343	577,767	240,514	77,155	743,519	280,281
70 and over % with dose 1	>99%	>99%	>99%	89.85%	96.86%	97.82%	>99%	>99%	96.83%
70 and over % with dose 2	93.28%	>99%	97.27%	81.72%	88.79%	87.55%	90.48%	93.50%	86.72%
12 to 15 - dose 1	880,121	19,500	313,339	7,957	149,757	45,916	17,021	256,349	64,165
12 to 15 - dose 2	678,267	17,895	277,519	5,178	95,128	26,343	10,475	205,401	36,498
12 to 15 - population	1,243,990	19,693	390,330	13,060	270,146	82,747	26,308	308,611	132,869
12 to 15 % with dose 1	70.75%	>99%	80.28%	60.93%	55.44%	55.49%	64.70%	83.07%	48.29%
12 to 15 % with dose 2	54.52%	90.87%	71.10%	39.65%	35.21%	31.84%	39.82%	66.56%	27.47%

*National population will not equal sum of listed jurisdictions due to a small number of people counted in national population residing in some 'other' territories. Sum of state doses will not add to national total as some records are unable to be geocoded to a State or Territory.

Doses sourced from Australian Immunisation Register, population from ABS ERP June 2020

Vaccinations by location

Cumulative total doses administered vs eligible state populations*

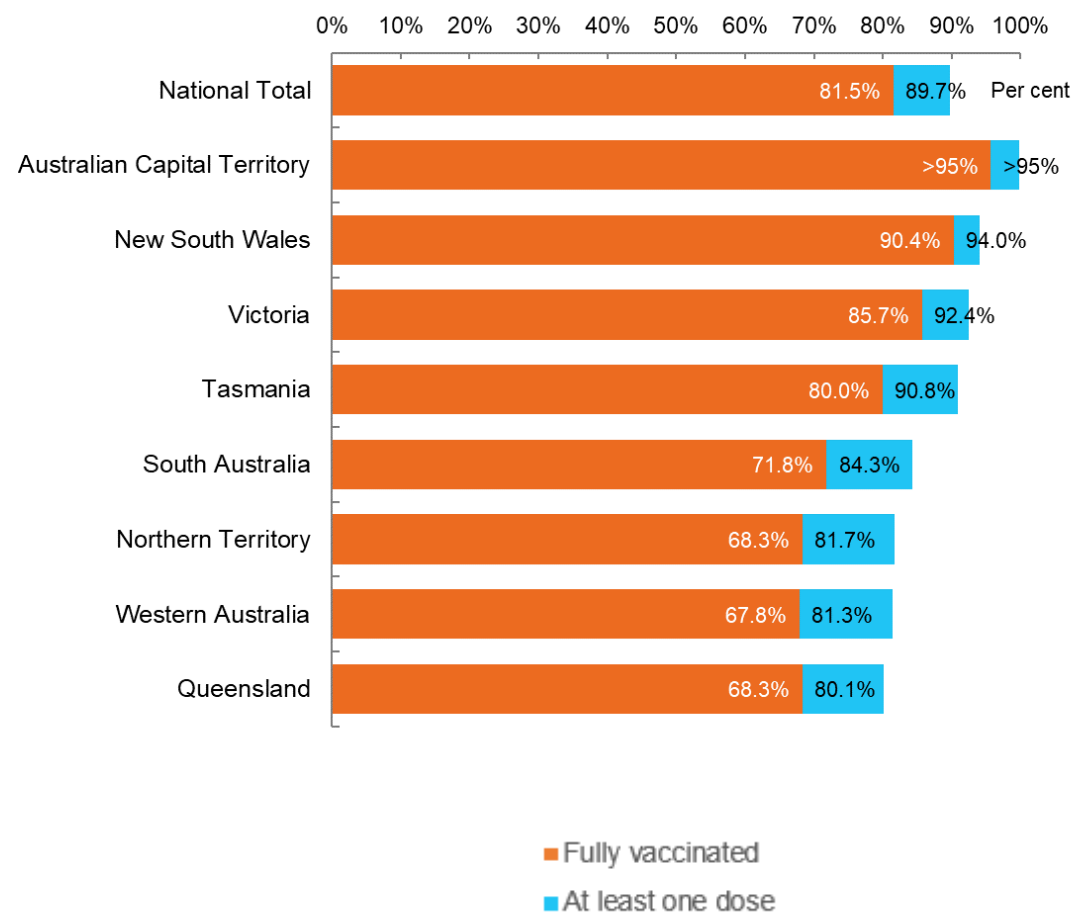


*Not an indication of percentage vaccinated, numbers will exceed 100 due to multiple doses required per person of the population. All doses are included, including those for the 12-15 cohort, and are based on vaccination provider location.

Data as at:
09 Nov 2021

Australia's COVID-19
Vaccine Roadmap

First and Second Doses by state of residence



Aboriginal and Torres Strait Islander peoples

Number of people vaccinated

Data as at:
09 Nov 2021
Updated weekly

Australia's COVID-19
Vaccine Roadmap



352,289

people over the age of 16
have had at least one dose

67.0%

of people over the age of 16
have had at least one dose



291,171

people over the age of 16
are fully vaccinated

55.3%

of people over the age of 16 are
fully vaccinated



**33,540
(46.7%)**

people aged 12-15 years
have had at least one dose

170 Aboriginal community controlled health services (ACCHS)

0#	50	26	40	12	3	21	18
ACT	NSW	NT	QLD	SA	TAS	VIC	WA

Medicare Address State ^{##}	Individuals Dose 1	Individuals Dose 1 %	Individuals Dose 2	Individuals Dose 2 %
Unknown	11,049	41.4%	7,527	28.1%
Australian Capital Territory	4,807	88.6%	4,498	82.7%
New South Wales	133,749	83.6%	123,270	76.9%
Northern Territory	30,991	67.5%	22,567	48.9%
Other Territories	148	91.1%	142	87.5%
Queensland	79,840	55.1%	61,183	42.1%
South Australia	14,809	57.5%	11,272	43.6%
Tasmania	12,821	74.7%	10,858	62.8%
Victoria	34,253	84.9%	29,810	73.6%
Western Australia	29,822	46.4%	20,044	31.0%
Totals	352,289	67.0%	291,171	55.3%

*Identifying as Aboriginal and Torres Strait Islander is optional and the estimated population may be under reported.

**Includes all Aboriginal and Torres Strait Islander peoples who have received a vaccination, not limited to those administered in an ACCHS setting

#ACCHS in the ACT are currently operating as a Commonwealth Vaccine Clinics so not included to avoid double counting

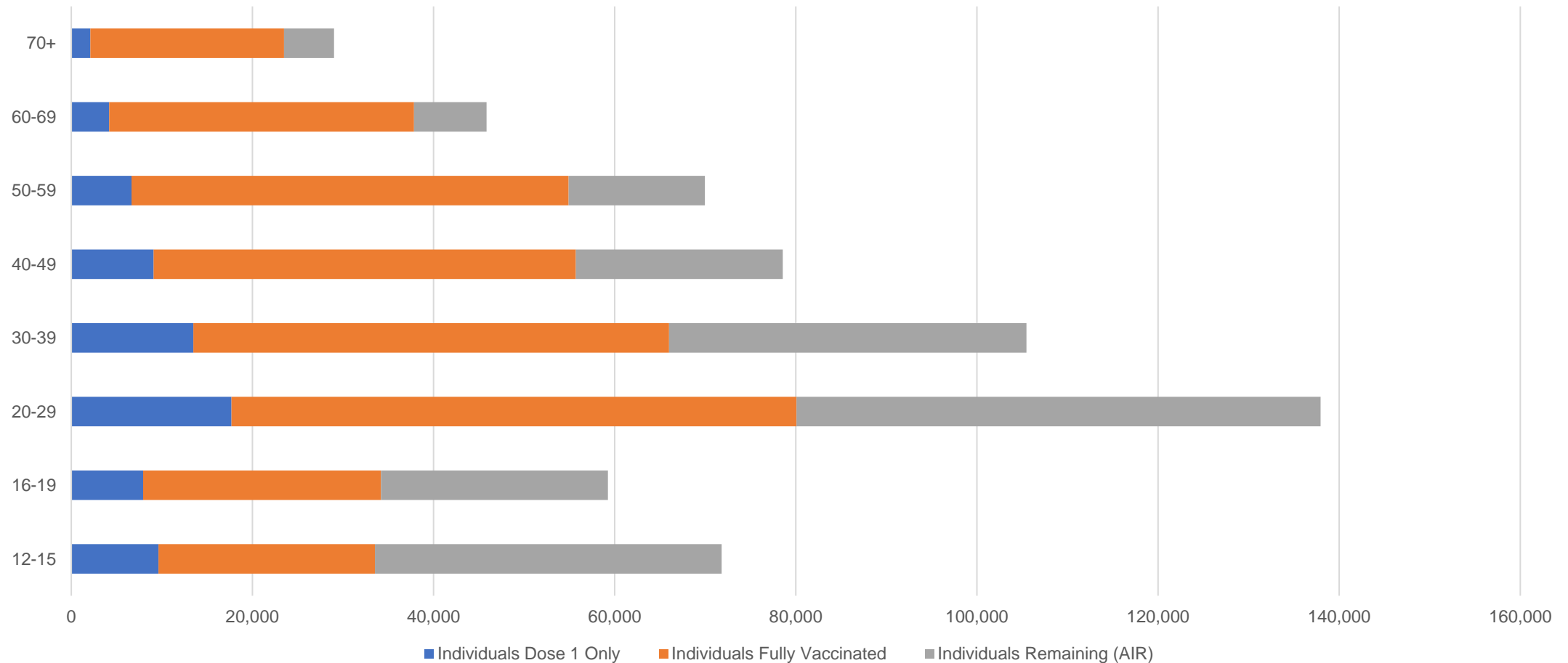
##The above table includes all identified Aboriginal and Torres Strait Islander people who are aged 16 and above by their state of residence.

Aboriginal and Torres Strait Islander peoples

Number of people vaccinated by age

Data as at:
09 Nov 2021
Updated weekly

Australia's COVID-19
Vaccine Roadmap



Source: Australian Immunisation Register

Data as at:
09 Nov 2021

Commonwealth primary care



Primary care vaccine administration sites

5,611	137	170	3,434
GPs	CVCs	ACCHS	Pharmacies



20,812,031 total vaccine doses administered
primary care settings as at 09 November
+ 101,678 recorded in the last 24 hours

Primary care vaccinations by provider type

	Doses administered	Daily increase	7 day increase
General Practice* includes other Commonwealth	18,895,504	73,567	488,465
Pharmacy	1,916,527	28,111	186,088



133,570 doses administered to persons
residing in other territories or with
missing residential information

*General practice includes Commonwealth Vaccination Clinics, Aboriginal Community Health Centres, Royal Flying Doctor Service and other Commonwealth vaccination facilities

Source: Australian Immunisation Register

Data as at:
09 Nov 2021

Commonwealth aged care and disability doses administered



1,066,318 (+ 1,504 last 24 hours)

Total vaccine doses administered in aged care and disability facilities as at 09 November

Number of doses administered as part of the Commonwealth aged and disability care rollout

NSW
512,505
(+311 daily increase)

VIC
198,841
(+190 daily increase)

QLD
157,117
(+293 daily increase)

WA
73,210
(+269 daily increase)

TAS
17,110
(+35 daily increase)

SA
63,372
(+230 daily increase)

ACT
13,202
(+52 daily increase)

NT
5,991
(+41 daily increase)

24,970

doses administered to persons
residing in other territories or with
missing residential information

*Sourced from the Australian Immunisation Register. Includes all persons vaccinated at participating residential aged care, disability and related industry settings.

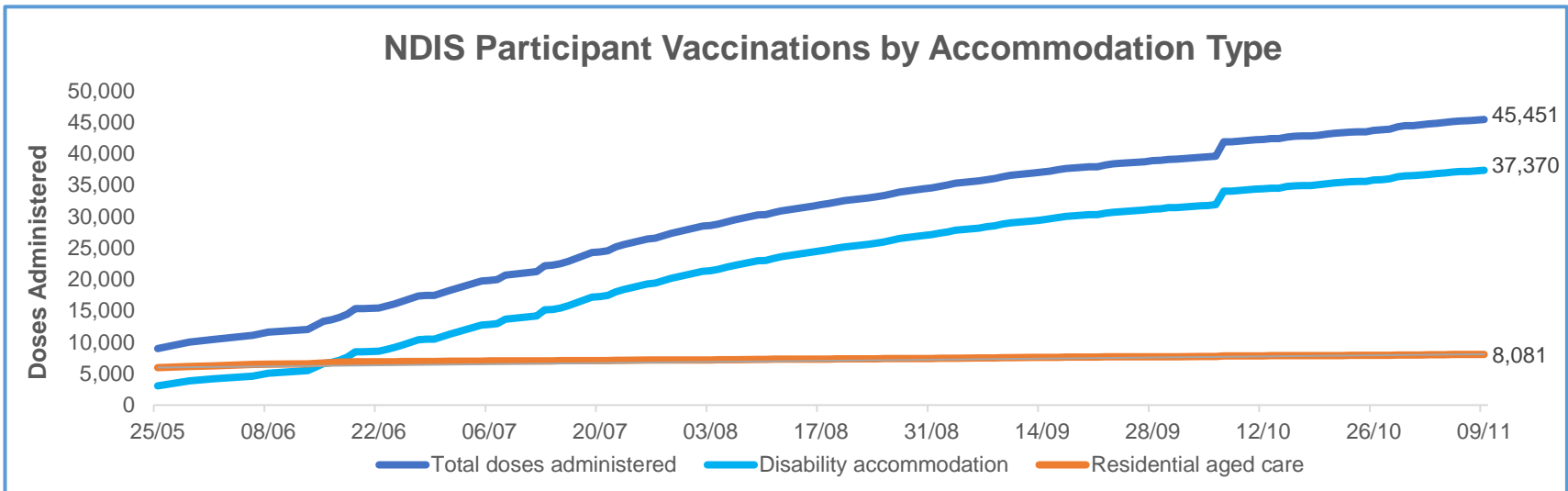
**State level breakdown indicates the residential location and may not align to the state in which the vaccination occurred.

Source: Australian Immunisation Register

Data as at:
09 Nov 2021*

Vaccination rate of people with disability and the disability workforce

Phase 1a – People with disability living in shared accommodation



	Total people with at least one dose	People fully vaccinated	Total number of individuals in cohort	Total doses administered	% People with at least one dose	% People fully vaccinated
NDIS participants living in shared accommodation **	23,399	22,052	27,603	45,451	84.8%	79.9%
NDIS screened workers ***	198,387	184,292	235,211	382,679	84.3%	78.4%



* Updates are available Monday to Friday on participants, and bi-weekly for workers, numbers may be up to four days old.

** Shared accommodation means two or more people with disability living in shared residential accommodation and NDIS participants living in Residential Aged Care accommodation as per the eligibility criteria of Phase 1a.

*** Total number of workers within the NDIS Commission Worker Screening database who have ever been successfully screened and linked to an NDIS registered provider or participant.

Source: Linkage between National Disability Insurance Agency data, NDIS Quality and Safeguards Commission data and the Australian Immunisation Register.

Residential aged care vaccination rollout

Residential aged care facilities status

100% Commonwealth facilities visited (2,552 planned sites)

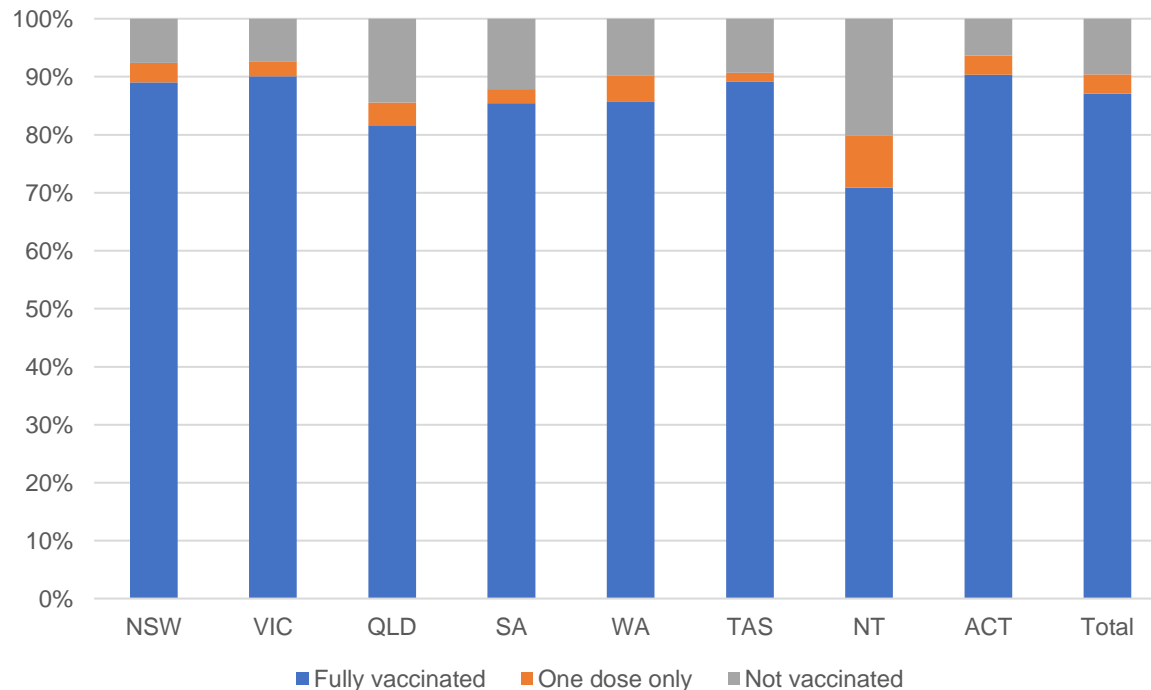
161,049 People fully vaccinated

167,157 People with at least one dose

Australia's COVID-19 Vaccine Roadmap

Data as at:
9 Nov 2021

Aged care resident vaccinations



Aged care worker vaccinations

Jurisdictions	Total workers with at least one dose	Workers fully vaccinated	% Workers with at least one dose	% Workers fully vaccinated
NSW	78,322	77,329	99.4%	98.2%
VIC	71,363	68,404	97.2%	93.2%
QLD	48,233	47,238	99.4%	97.3%
SA	27,432	26,221	100.0%	95.6%
WA	23,663	22,031	99.9%	93.0%
TAS	7,684	7,321	100.0%	95.3%
NT	822	817	99.5%	98.9%
ACT	2,958	2,888	99.8%	97.5%
Total	260,477	252,249	98.9%	95.8%

Source: My Aged Care Portal staff vaccination progress

**Resident vaccination information is reported manually by service providers

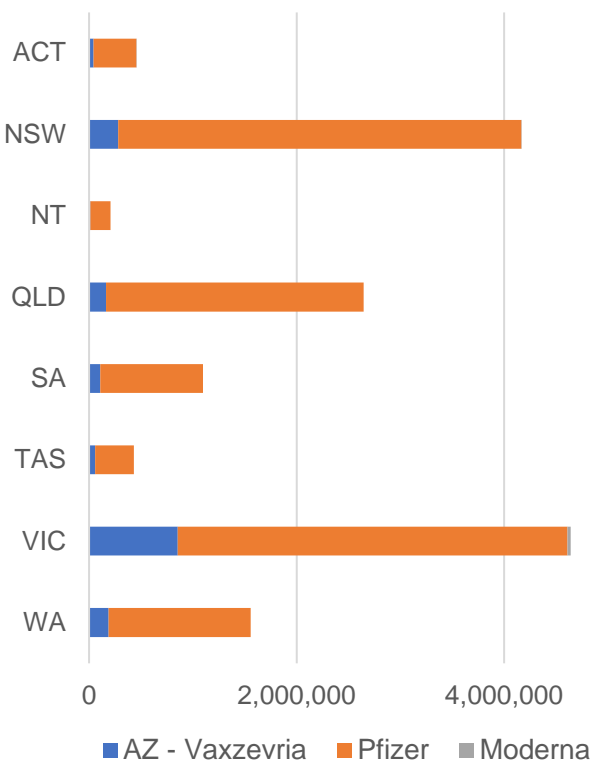
*Status updates are provided by facilities at least once per week. Reporting is updated Monday to Friday to encompass different facility updates being made on different days.

Data is sourced directly from Aged Care Service Providers and is not drawn or closely aligned with data from AIR due to inconsistencies and potential lags in uploading of records.

Data as at:
09 Nov 2021

Jurisdiction administered

Total vaccine doses administered in State and Territory clinics as at 09 November



15,199,450 total vaccine doses administered
in State and Territory clinics as at 09 November
+ **46,242** recorded in the last 24 hours
+ **344,216** recorded in the last 7 days

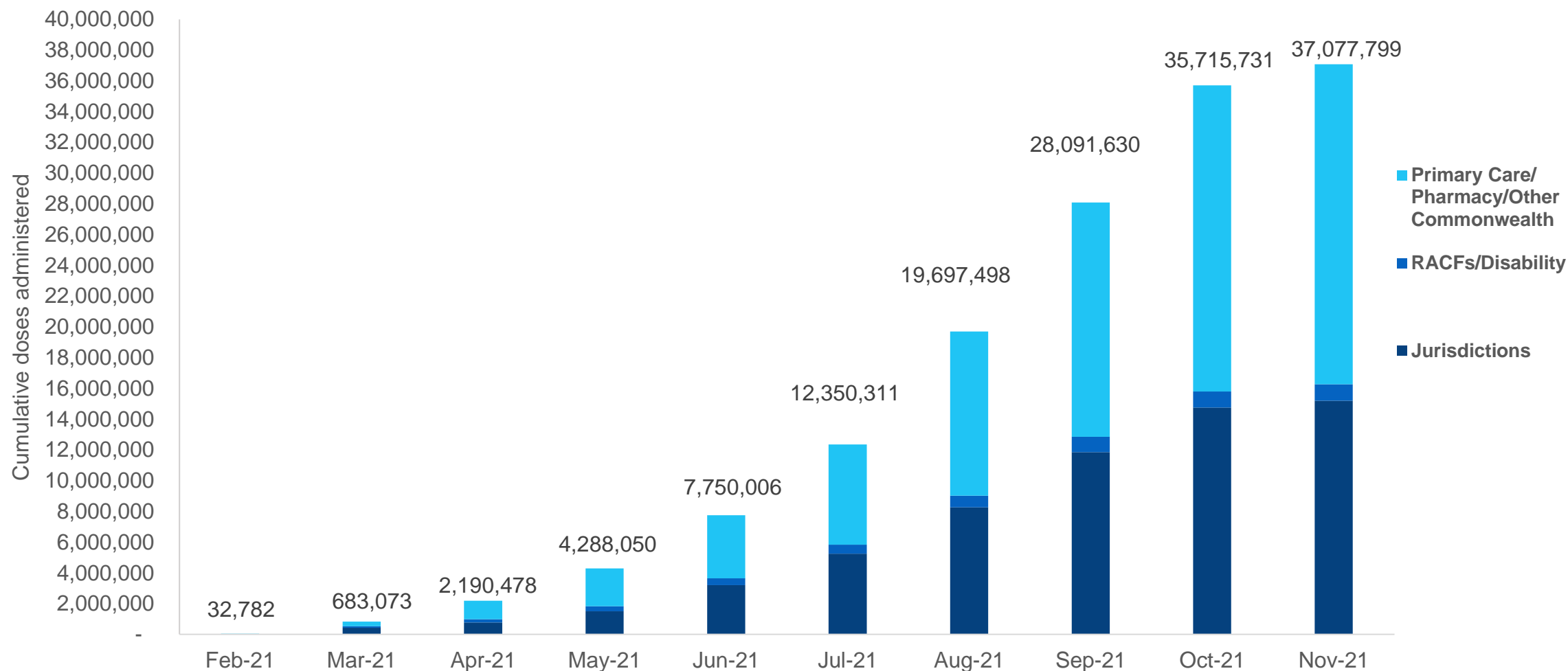


*Sourced from the Australian Immunisation Register and self-reported data. Numbers are calculated as difference in daily cumulative reported numbers to allow for historical corrections in all self-reported data sources.

Cumulative doses administered by channel

Data as at:
09 Nov 2021

Australia's COVID-19
Vaccine Roadmap



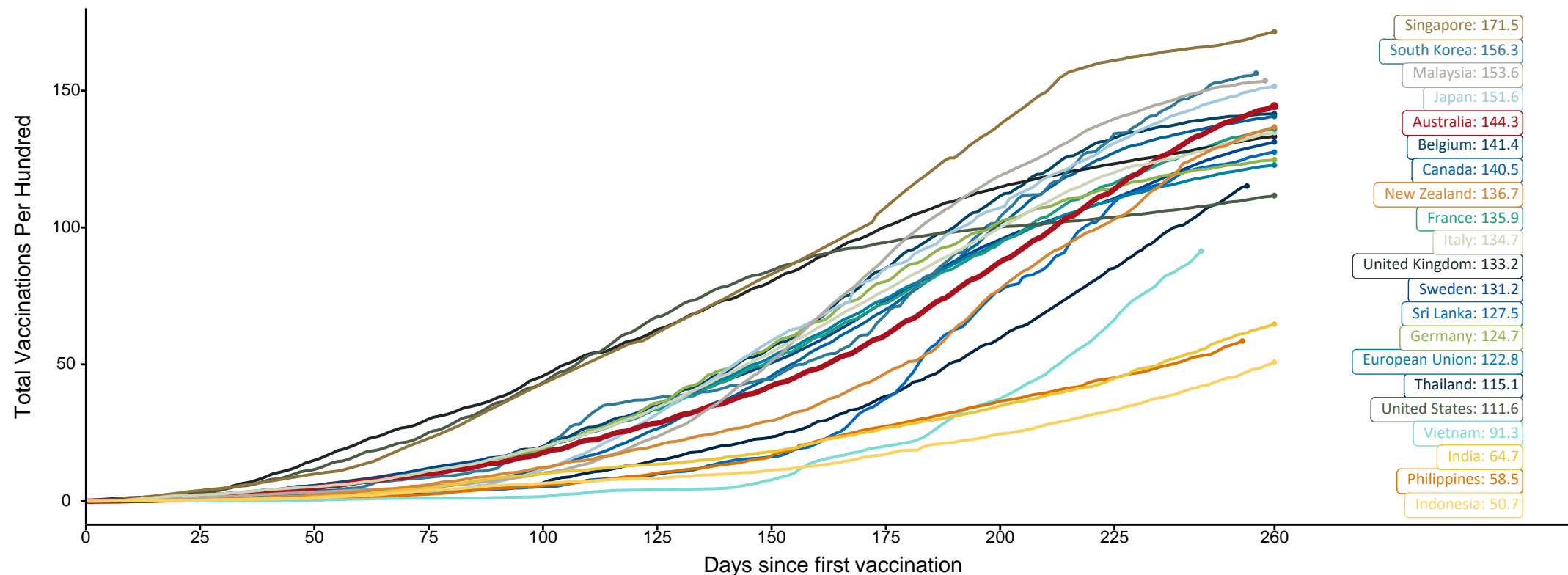
Source: Australian Immunisation Register

Doses at equivalent stages of rollout (Day 260)

Data as at:
09 Nov 2021

The x-axis is truncated at the length of Australia's vaccination program. Countries with intermittent reporting have had their doses per 100 imputed to Australia's current stage of rollout. Israel excluded as it is beyond scale of the graph

Cumulative doses administered (09 Nov): **37,077,799**

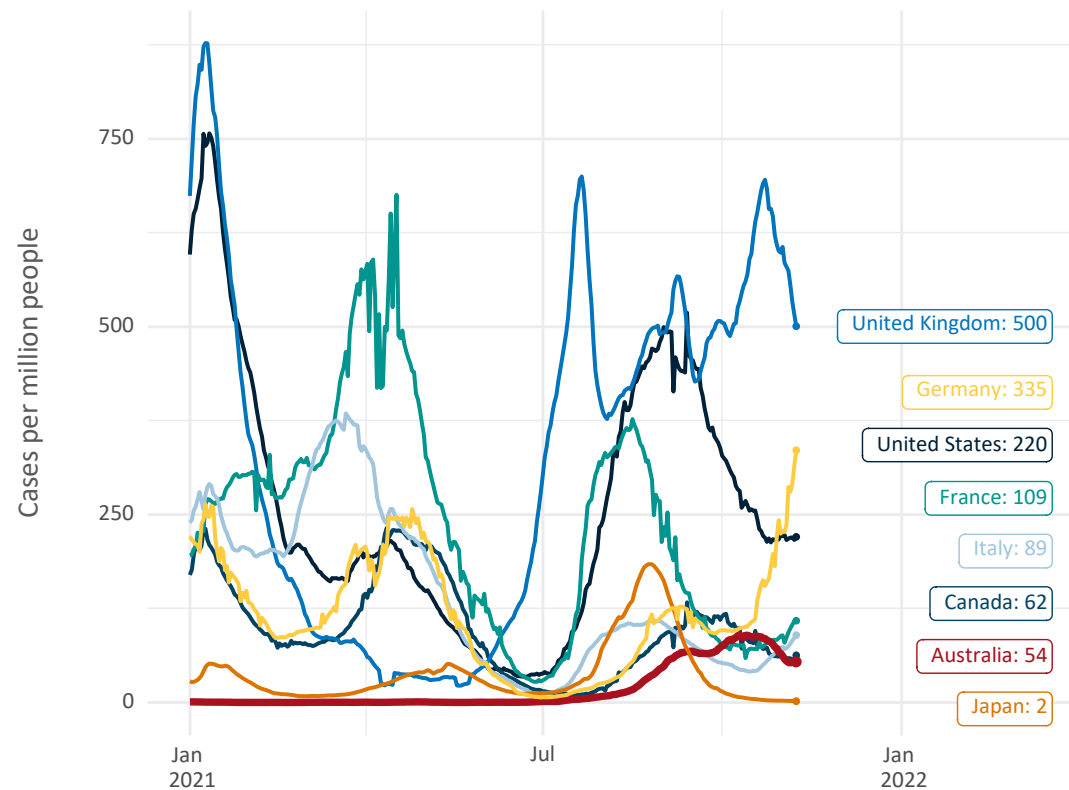


Note: From 15 September 2021, data for Australia includes all doses administered to people 12 and over. Prior to 15 September, data was for 16 and over
Source: Department of Health (Australia), Our World in Data (international)
Latest data: 09 November

International data – COVID-19

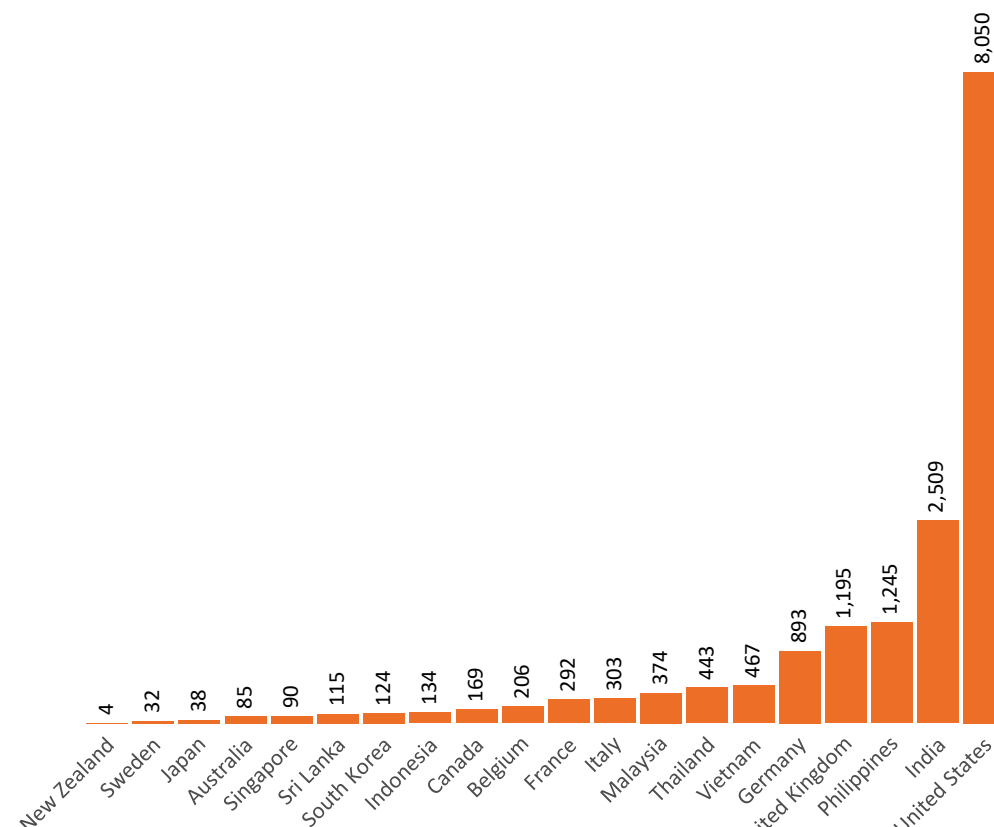
Data as at:
09 Nov 2021

New daily cases per million in 2021, Australia and G7 countries
Smoothed - 7 day average



Source: OWID
Data downloaded: 10 Nov 2021 08:14
Latest data: 08 Nov 2021

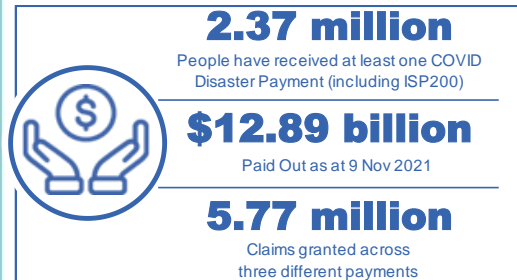
COVID-19 deaths in past 7 days - Australia and select countries



Source: OWID
Data downloaded: 10 Nov 2021 08:15
Latest data: 08 Nov 2021

Data as at midnight:
9 Nov 2021

Pandemic Response Payments (Current)



COVID Disaster Payment:	5.59 million claims received - 2.19 million individuals paid a total of \$12.45 billion.
\$200 Income Support Payment:	337,000 claims received - 182,000 individuals paid a total of \$266.71 million.
Pandemic Leave Disaster Payment:	124,000 claims received - 106,000 individuals paid a total of \$173.53 million.



COVID Disaster Payment

assisting during a lockdown event in a Commonwealth hotspot.

Income Support Payment \$200

for income support recipients who lost at least 8 hours of work.

Pandemic Leave Disaster Payment

for those who have to self-isolate, quarantine or care.

For more information visit:
servicesaustralia.gov.au

CURRENT COVID-19 DISASTER PAYMENTS

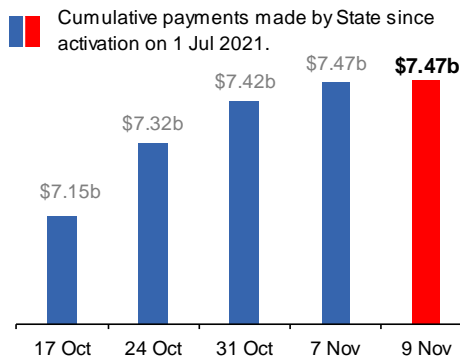
New South Wales

Active lockdown since 24 Jun to 10 Oct
Claiming period ends 27 Nov

1.08m people have received at least one COVID Disaster Payment.

\$7.47b paid out as at 9 Nov 2021.

\$46m paid in initial and reoccurring payments in the week ending 7 Nov 2021.



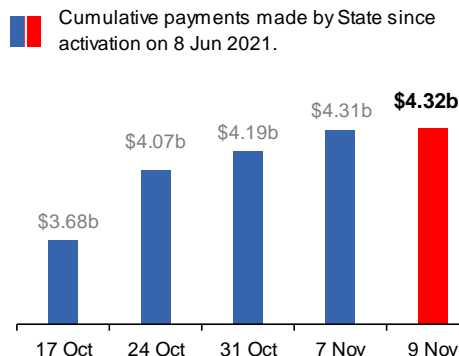
Victoria

Active lockdown (#6) since 6 Aug to 28 Oct
Claiming period ends 9 Dec

742,000 people have received at least one COVID Disaster Payment.

\$4.32b paid out as at 9 Nov 2021.

\$121m paid in initial and reoccurring payments in the week ending 7 Nov 2021.



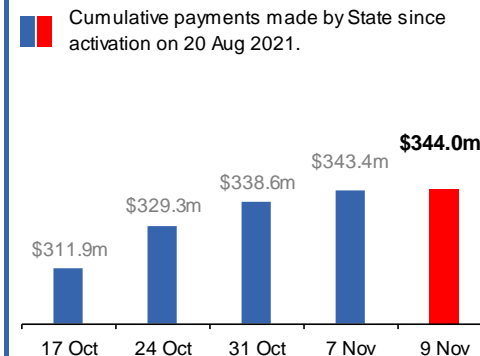
Australian Capital Territory

Active lockdown since 12 Aug to 14 Oct
Claiming period ends 25 Nov

65,000 people have received at least one COVID Disaster Payment.

\$344.0m paid out as at 9 Nov 2021.

\$4.8m paid in initial and reoccurring payments in the week ending 7 Nov 2021.



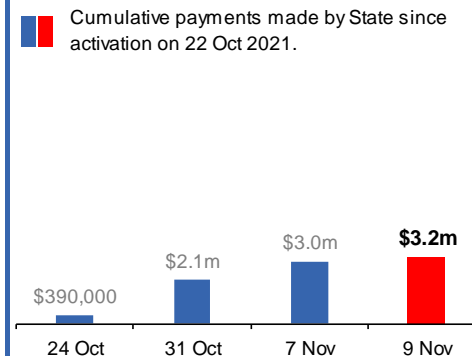
Tasmania

Lockdown from 15 Oct to 18 Oct
Claiming period ends 12 Nov

6,200 people have received at least one COVID Disaster Payment.

\$3.2m paid out as at 9 Nov 2021.

\$941,000 paid in initial payments in the week ending 7 Nov 2021.



Pandemic Response Payments (Closed Events)

Data as at midnight:
9 Nov 2021

CLOSED COVID-19 DISASTER PAYMENTS

