



Australian Government
Operation COVID Shield

COVID-19 Vaccine Roll-out

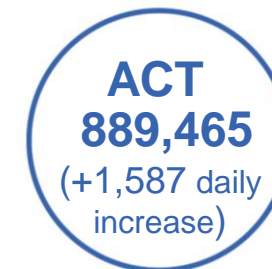
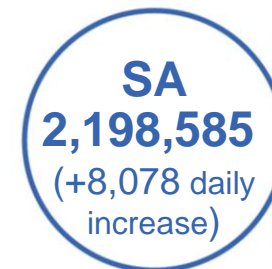
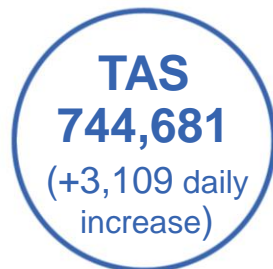
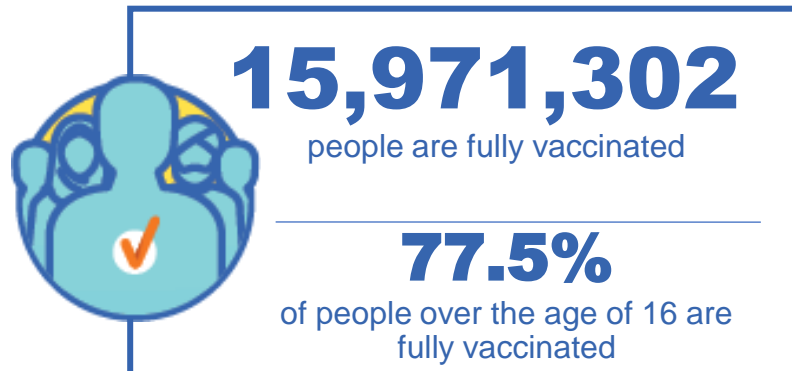
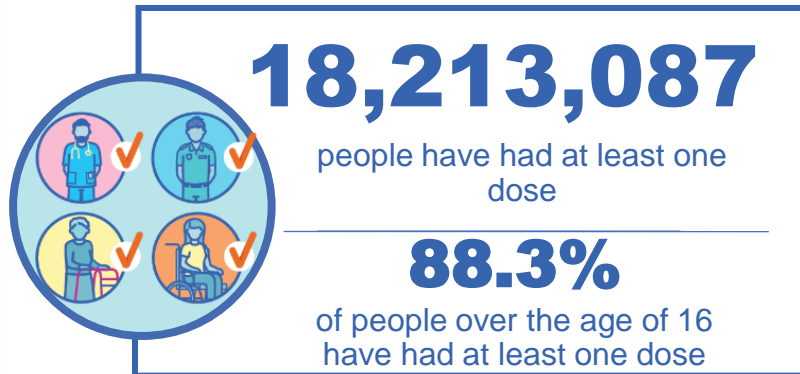
01 November 2021

Data as at:
31 Oct 2021

Total vaccine doses



35,715,731 total vaccine
doses administered nationally as at 31 October
+85,764 recorded in the last 24 hours



*Administration state breakdown indicates state in which a vaccine was administered

**Overall dose count includes instances of more than two doses per person in a small number of cases.

Source: Australian Immunisation Register

Data as at:
31 Oct 2021

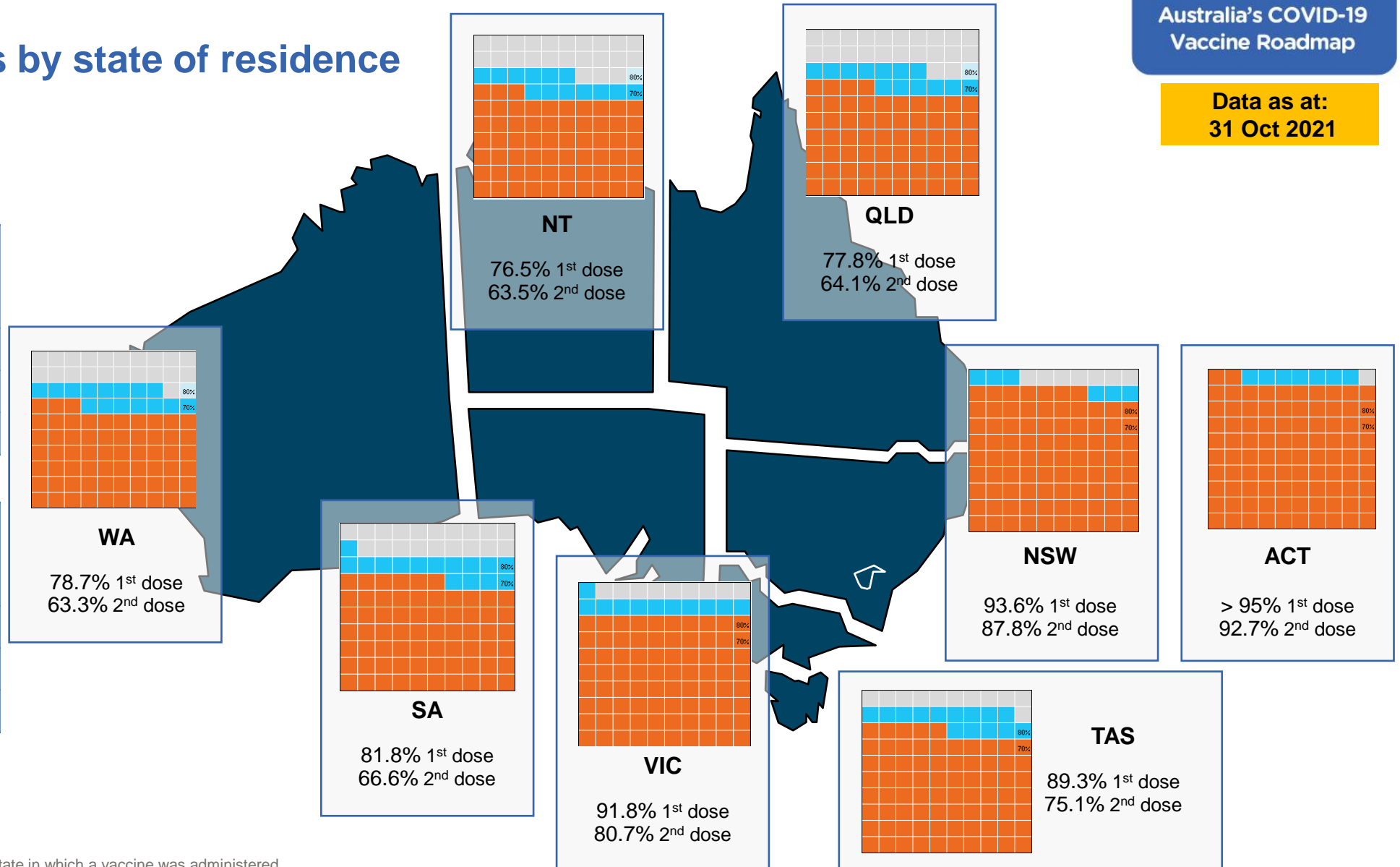
Vaccinations by state of residence

First doses

Age	Today	4 weeks ago	8 weeks ago
16+	88.3%	80.3%	64.3%
50+	>95%	90.7%	82.3%
70+	>95%	>95%	90.6%

Fully vaccinated

Age	Today	4 weeks ago	8 weeks ago
16+	77.5%	57.7%	39.3%
50+	86.0%	73.8%	58.1%
70+	90.4%	80.8%	68.5%



*Residential state may differ from the state in which a vaccine was administered

Commonwealth and Jurisdiction vaccine doses administered

Data as at:
31 Oct 2021

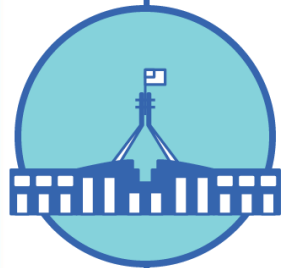


14,749,064

doses administered by state
and territory facilities

+ 52,773

recorded in the last 24 hours



20,966,667

doses administered by
commonwealth facilities

+ 32,991

recorded in the last 24 hours

19,912,202 total vaccine doses
administered in primary care settings

1,054,465 total vaccine doses
administered in aged care and disability
settings



35,715,731 total vaccine
doses administered nationally as at 31 October

+ 85,764 recorded in the last 24 hours

NSW	Jurisdictions	Commonwealth
Cumulative	4,104,392	8,284,580
Daily increase	5,064	6,163

VIC	Jurisdictions	Commonwealth
Cumulative	4,528,542	5,348,790
Daily increase	14,382	12,428

QLD	Jurisdictions	Commonwealth
Cumulative	2,541,861	3,626,778
Daily increase	17,144	7,330

WA	Jurisdictions	Commonwealth
Cumulative	1,491,493	1,636,774
Daily increase	5,887	4,318

TAS	Jurisdictions	Commonwealth
Cumulative	411,977	332,704
Daily increase	2,938	171

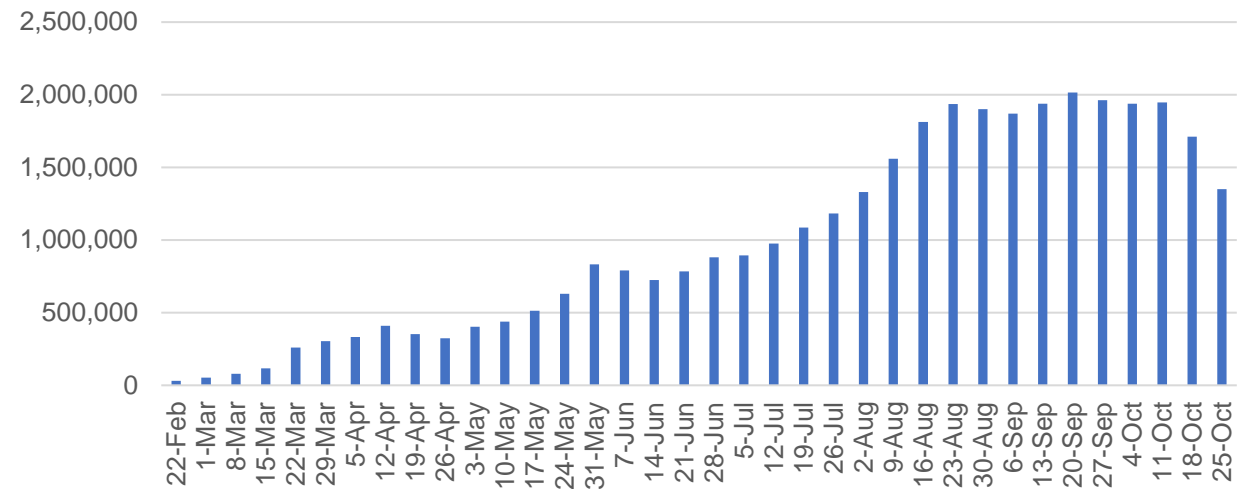
SA	Jurisdictions	Commonwealth
Cumulative	1,034,744	1,163,841
Daily increase	5,907	2,171

ACT	Jurisdictions	Commonwealth
Cumulative	444,033	445,432
Daily increase	1,189	398

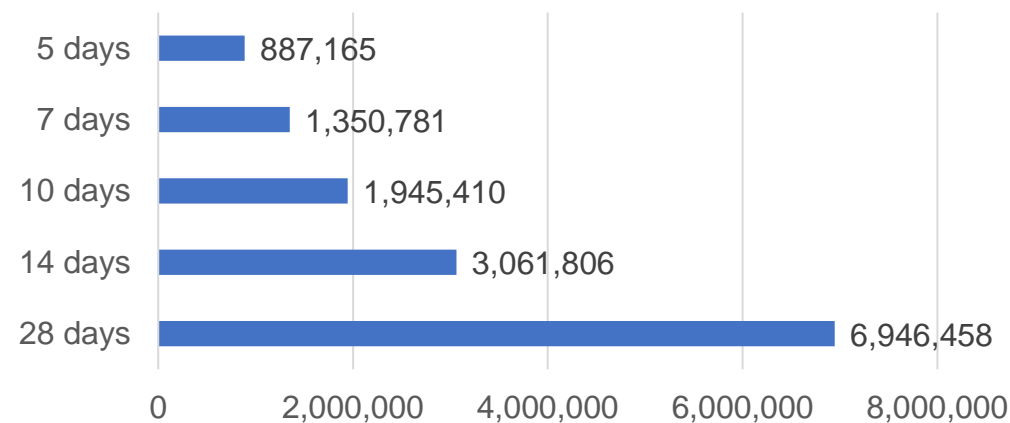
NT	Jurisdictions	Commonwealth
Cumulative	192,022	127,768
Daily increase	262	12

Vaccine milestone charts

Jabs in arms by week



Doses Reported

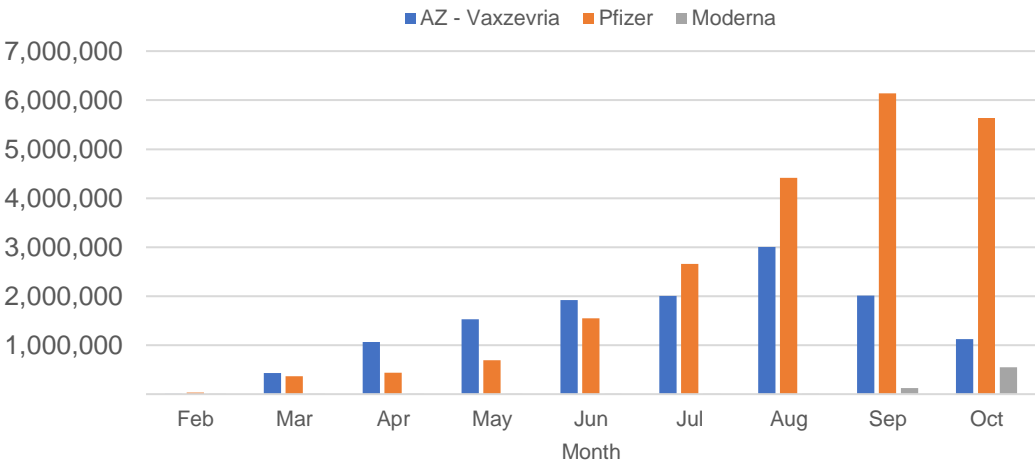


*Sourced from the Australian Immunisation Register.

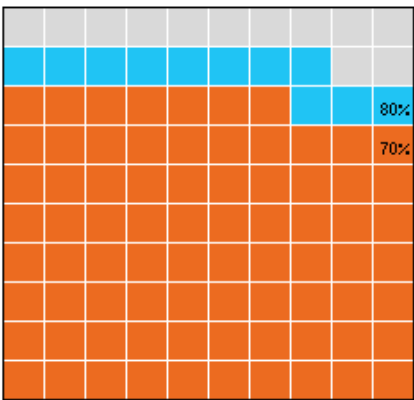
Data as at:
31 Oct 2021

Australia's COVID-19
Vaccine Roadmap

Doses by administration month and vaccine type



Eligible population percentage coverage



*Each square represents 1% of the national population. Squares are filled as milestones are achieved.

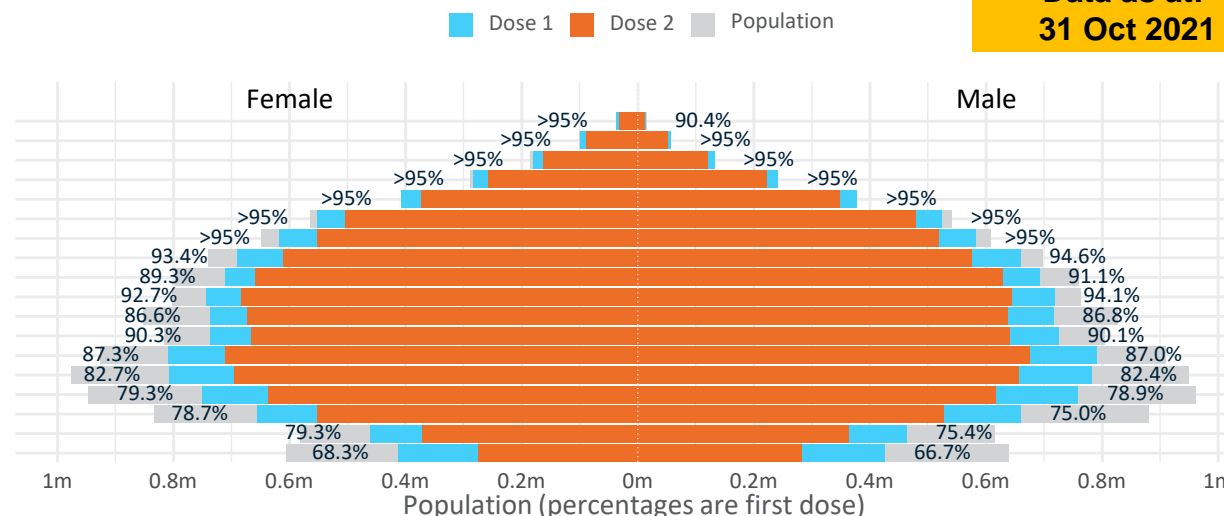
Doses by age and sex

First and second doses by age and sex

Australia's COVID-19
Vaccine Roadmap

Data as at:
31 Oct 2021

Age	Dose 1	Dose 2
95+	50,311 (>95%)	44,014 (83.2%)
90-94	156,996 (>95%)	140,287 (88.6%)
85-89	313,167 (>95%)	282,334 (89.3%)
80-84	525,607 (>95%)	480,034 (90.8%)
75-79	786,286 (>95%)	722,585 (93.4%)
70-74	1,077,097 (>95%)	983,284 (89.0%)
65-69	1,201,487 (>95%)	1,071,513 (85.2%)
60-64	1,351,749 (94.1%)	1,186,421 (82.6%)
55-59	1,404,365 (90.3%)	1,289,589 (82.9%)
50-54	1,461,878 (93.4%)	1,329,023 (84.9%)
45-49	1,454,904 (86.8%)	1,311,473 (78.2%)
40-44	1,464,103 (90.4%)	1,308,453 (80.8%)
35-39	1,603,746 (87.4%)	1,388,169 (75.6%)
30-34	1,596,089 (83.0%)	1,355,890 (70.5%)
25-29	1,518,657 (79.7%)	1,259,622 (66.1%)
20-24	1,321,878 (77.2%)	1,083,543 (63.3%)
16-19	924,767 (77.3%)	735,068 (61.5%)
12-15	839,475 (67.5%)	558,140 (44.9%)



	AUS	ACT	NSW	NT	QLD	SA	TAS	VIC	WA
16 and over - dose 1	18,213,087	341,933	6,144,386	145,706	3,200,979	1,177,739	392,880	4,962,658	1,663,679
16 and over - dose 2	15,971,302	318,883	5,766,278	121,050	2,636,923	959,334	330,543	4,363,268	1,339,599
16 and over - population	20,619,959*	344,037	6,565,651	190,571	4,112,707	1,440,400	440,172	5,407,574	2,114,978
16 and over % with dose 1	88.33%	>95%	93.58%	76.46%	77.83%	81.76%	89.26%	91.77%	78.66%
16 and over % with dose 2	77.46%	92.69%	87.82%	63.52%	64.12%	66.60%	75.09%	80.69%	63.34%
50 and over - dose 1	8,328,943	132,699	2,746,404	52,081	1,585,325	615,563	206,861	2,140,073	799,903
50 and over - dose 2	7,529,084	125,743	2,603,058	45,789	1,382,071	527,058	182,526	1,940,519	683,435
50 and over - population	8,749,703	127,802	2,807,793	62,280	1,758,855	674,384	220,036	2,211,211	885,370
50 and over % with dose 1	>95%	>95%	>95%	83.62%	90.13%	91.28%	94.01%	>95%	90.35%
50 and over % with dose 2	86.05%	>95%	92.71%	73.52%	78.58%	78.15%	82.95%	87.76%	77.19%
70 and over - dose 1	2,909,464	43,122	967,582	10,889	554,771	232,893	76,233	734,858	268,976
70 and over - dose 2	2,652,538	40,777	915,726	9,695	496,582	202,249	67,725	669,190	234,054
70 and over - population	2,934,706	39,946	962,606	12,343	577,767	240,514	77,155	743,519	280,281
70 and over % with dose 1	>95%	>95%	>95%	88.22%	>95%	>95%	>95%	>95%	>95%
70 and over % with dose 2	90.39%	>95%	>95%	78.55%	85.95%	84.09%	87.78%	90.00%	83.51%
12 to 15 - dose 1	839,475	19,387	309,584	7,008	136,409	40,031	15,607	250,421	55,812
12 to 15 - dose 2	558,140	15,979	243,296	3,940	75,913	18,096	6,119	165,790	26,323
12 to 15 - population	1,243,990	19,693	390,330	13,060	270,146	82,747	26,308	308,611	132,869
12 to 15 % with dose 1	67.48%	>95%	79.31%	53.66%	50.49%	48.38%	59.32%	81.14%	42.01%
12 to 15 % with dose 2	44.87%	81.14%	62.33%	30.17%	28.10%	21.87%	23.26%	53.72%	19.81%

*National population will not equal sum of listed jurisdictions due to a small number of people counted in national population residing in some 'other' territories. Sum of state doses will not add to national total as some records are unable to be geocoded to a State or Territory.

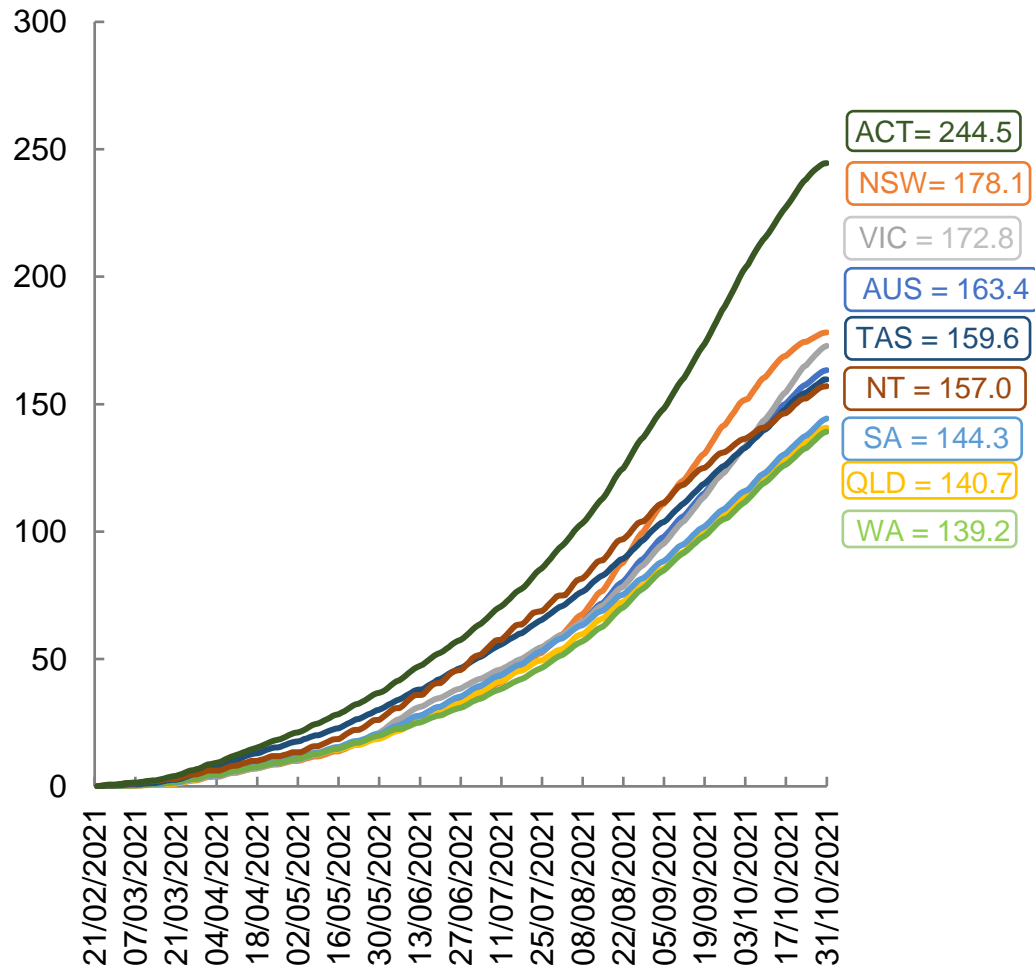
Doses sourced from Australian Immunisation Register, population from ABS ERP June 2020

Vaccinations by location

Data as at:
31 Oct 2021

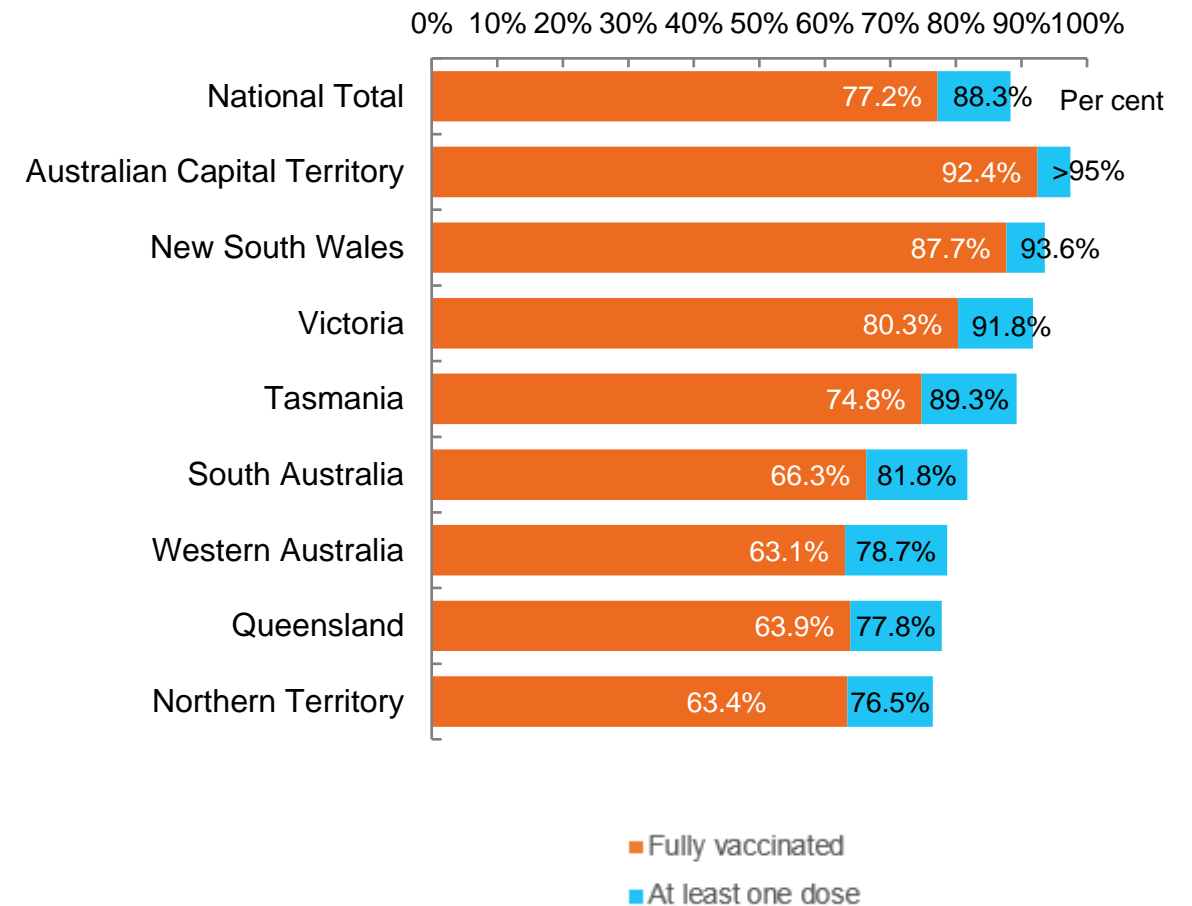
Australia's COVID-19
Vaccine Roadmap

Cumulative total doses administered vs eligible state populations*



*Not an indication of percentage vaccinated, numbers will exceed 100 due to multiple doses required per person of the population. All doses are included, including those for the 12-15 cohort, and are based on vaccination provider location.

First and Second Doses by state of residence



Aboriginal and Torres Strait Islander peoples

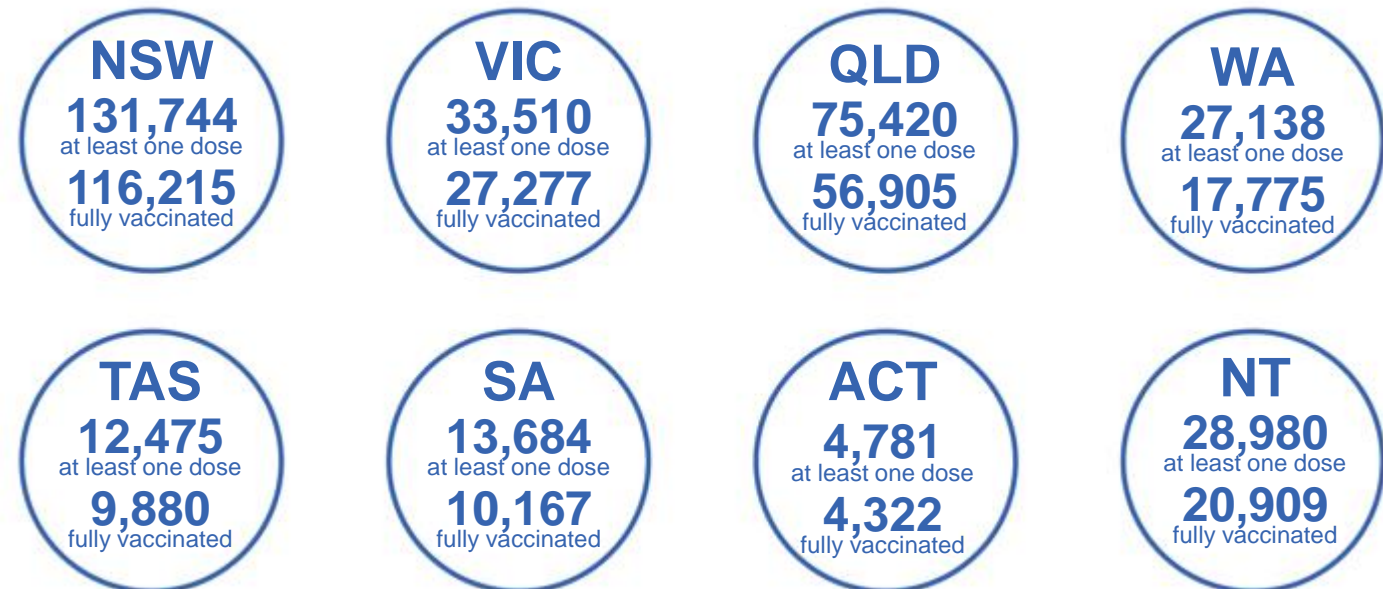
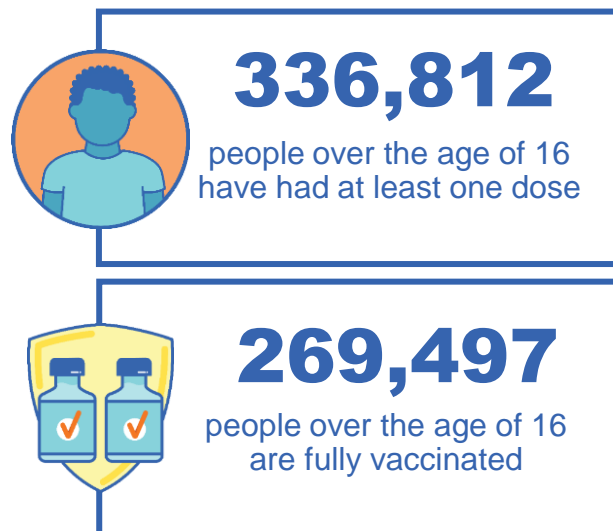
Number of people vaccinated

Data as at:
31 Oct 2021
Updated weekly

Australia's COVID-19
Vaccine Roadmap

169 Aboriginal community controlled health services (ACCHS)

0#	50	26	39	12	3	21	18
ACT	NSW	NT	QLD	SA	TAS	VIC	WA



9,080 people with at least one dose
6,047 people fully vaccinated

residing in other territories or with missing residential information
Source: Australian Immunisation Register

*Identifying as Aboriginal and Torres Strait Islander is optional and the estimated population may be under reported.

**Includes all Aboriginal and Torres Strait Islander peoples who have received a vaccination, not limited to those administered in an ACCHS setting

***Updated weekly.

#ACCHS in the ACT are currently operating as a Commonwealth Vaccine Clinics so not included to avoid double counting

Data as at:
31 Oct 2021

Commonwealth primary care



Primary care vaccine administration sites

5,604	137	169	3,416
GPs	CVCs	ACCHS	Pharmacies



19,912,202 total vaccine doses administered primary care settings as at 31 October
+ 31,759 recorded in the last 24 hours

Primary care vaccinations by provider type

	Doses administered	Daily increase	7 day increase
General Practice* includes other Commonwealth	18,239,727	25,652	672,244
Pharmacy	1,672,475	6,107	216,644



114,657 doses administered to persons residing in other territories or with missing residential information

*General practice includes Commonwealth Vaccination Clinics, Aboriginal Community Health Centres, Royal Flying Doctor Service and other Commonwealth vaccination facilities

Source: Australian Immunisation Register

Data as at:
31 Oct 2021

Commonwealth aged care and disability doses administered



1,054,465 (+ 1,232 last 24 hours)

Total vaccine doses administered in aged care and disability facilities as at 31 October

Number of doses administered as part of the Commonwealth aged and disability care rollout

NSW
510,468
(+165 daily increase)

VIC
197,166
(+280 daily increase)

QLD
154,853
(+310 daily increase)

WA
70,960
(+374 daily increase)

TAS
16,869
(+1 daily increase)

SA
61,108
(+70 daily increase)

ACT
13,060
(+16 daily increase)

NT
5,793
(+13 daily increase)

*Sourced from the Australian Immunisation Register. Includes all persons vaccinated at participating residential aged care, disability and related industry settings.

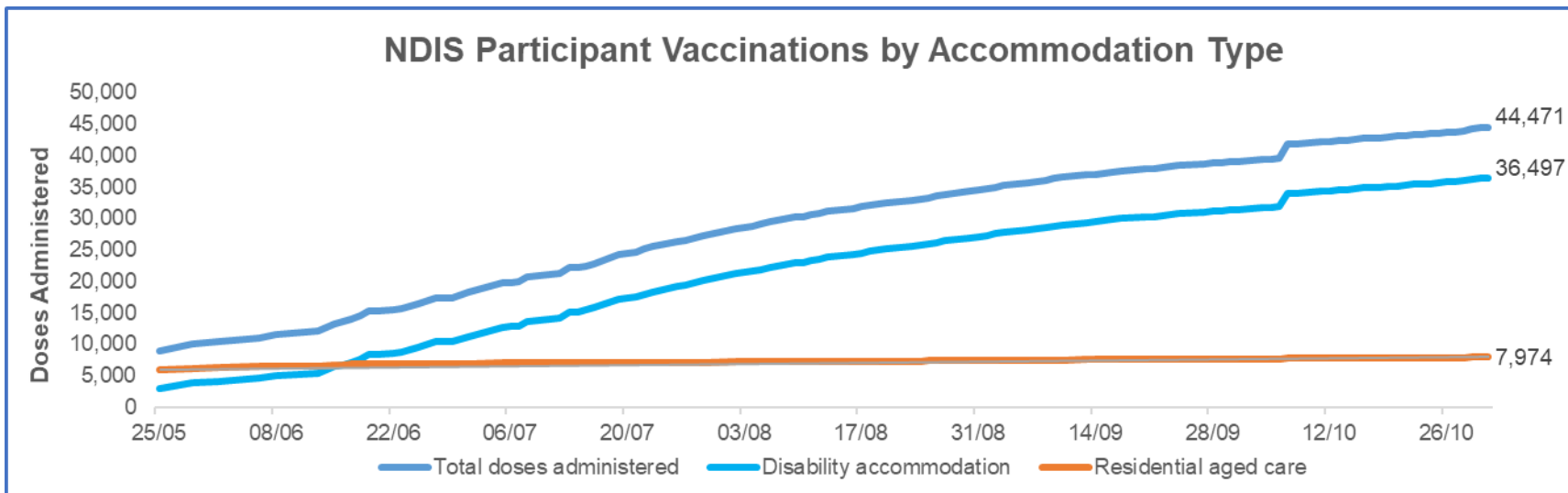
**State level breakdown indicates the residential location and may not align to the state in which the vaccination occurred.

24,188 doses administered to persons residing in other territories or with missing residential information

Data as at:
31 Oct 2021*

Vaccination rate of people with disability and the disability workforce

Phase 1a – People with disability living in shared accommodation



	Total people with at least one dose	People fully vaccinated	Total number of individuals in cohort	Total doses administered	% People with at least one dose	% People fully vaccinated
NDIS participants living in shared accommodation **	22,997	21,474	27,603	44,471	83.3%	77.8%
NDIS screened workers ***	184,994	167,792	223,262	352,786	82.9%	75.2%



* Updates are available Monday to Friday on participants, and bi-weekly for workers, numbers may be up to four days old.

** Shared accommodation means two or more people with disability living in shared residential accommodation and NDIS participants living in Residential Aged Care accommodation as per the eligibility criteria of Phase 1a.

*** Total number of workers within the NDIS Commission Worker Screening database who have ever been successfully screened and linked to an NDIS registered provider or participant.

Source: Linkage between National Disability Insurance Agency data, NDIS Quality and Safeguards Commission data and the Australian Immunisation Register.

Residential aged care vaccination rollout

Residential aged care facilities status

100%
Commonwealth facilities visited (2,573 planned sites)

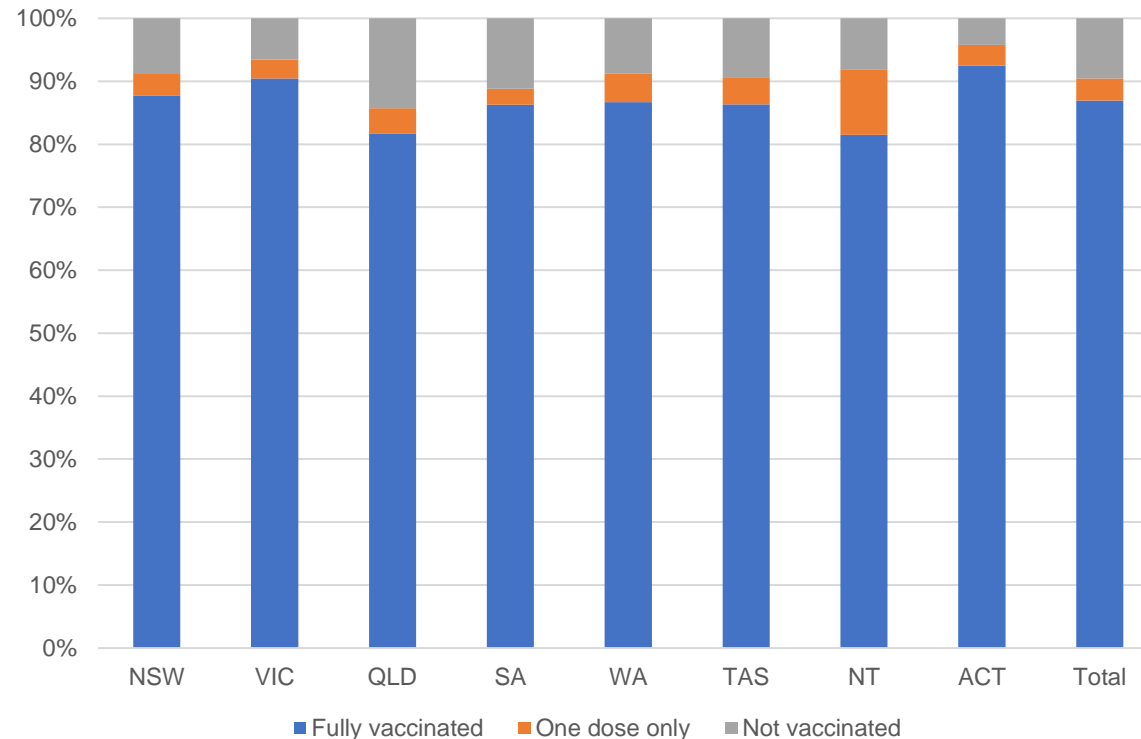
161,973
People fully vaccinated

168,520
People with at least one dose

Australia's COVID-19 Vaccine Roadmap

Data as at:
31 Oct 2021

Aged care resident vaccinations



Aged care worker vaccinations

Jurisdictions	Total workers with at least one dose	Workers fully vaccinated	% Workers with at least one dose	% Workers fully vaccinated
NSW	78,308	76,709	99.9%	97.8%
VIC	71,414	67,092	99.8%	93.7%
QLD	48,568	45,164	99.9%	92.9%
SA	27,312	25,571	100.0%	93.6%
WA	23,581	20,779	99.9%	88.0%
TAS	7,673	6,948	99.9%	90.4%
NT	830	807	99.5%	96.8%
ACT	2,969	2,874	99.9%	96.7%
Total	260,655	245,944	99.9%	94.2%

Source: My Aged Care Portal staff vaccination progress

**Resident vaccination information is reported manually by service providers

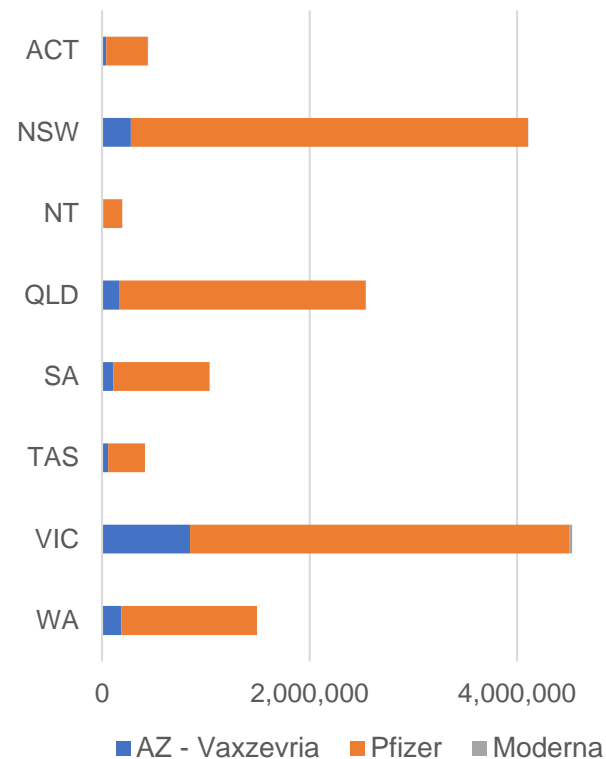
*Status updates are provided by facilities at least once per week. Reporting is updated Monday to Friday to encompass different facility updates being made on different days.

Data is sourced directly from Aged Care Service Providers and is not drawn or closely aligned with data from AIR due to inconsistencies and potential lags in uploading of records.

Data as at:
31 Oct 2021

Jurisdiction administered

Total vaccine doses administered in State and Territory clinics as at 31 October



14,749,064 total vaccine doses administered
in State and Territory clinics as at 31 October
+ 52,773 recorded in the last 24 hours
+ 449,017 recorded in the last 7 days

NSW
4,104,392
(+5,064 daily
increase)

VIC
4,528,542
(+14,382 daily
increase)

QLD
2,541,861
(+17,144 daily
increase)

WA
1,491,493
(+5,887 daily
increase)

TAS
411,977
(+2,938 daily
increase)

SA
1,034,744
(+5,907 daily
increase)

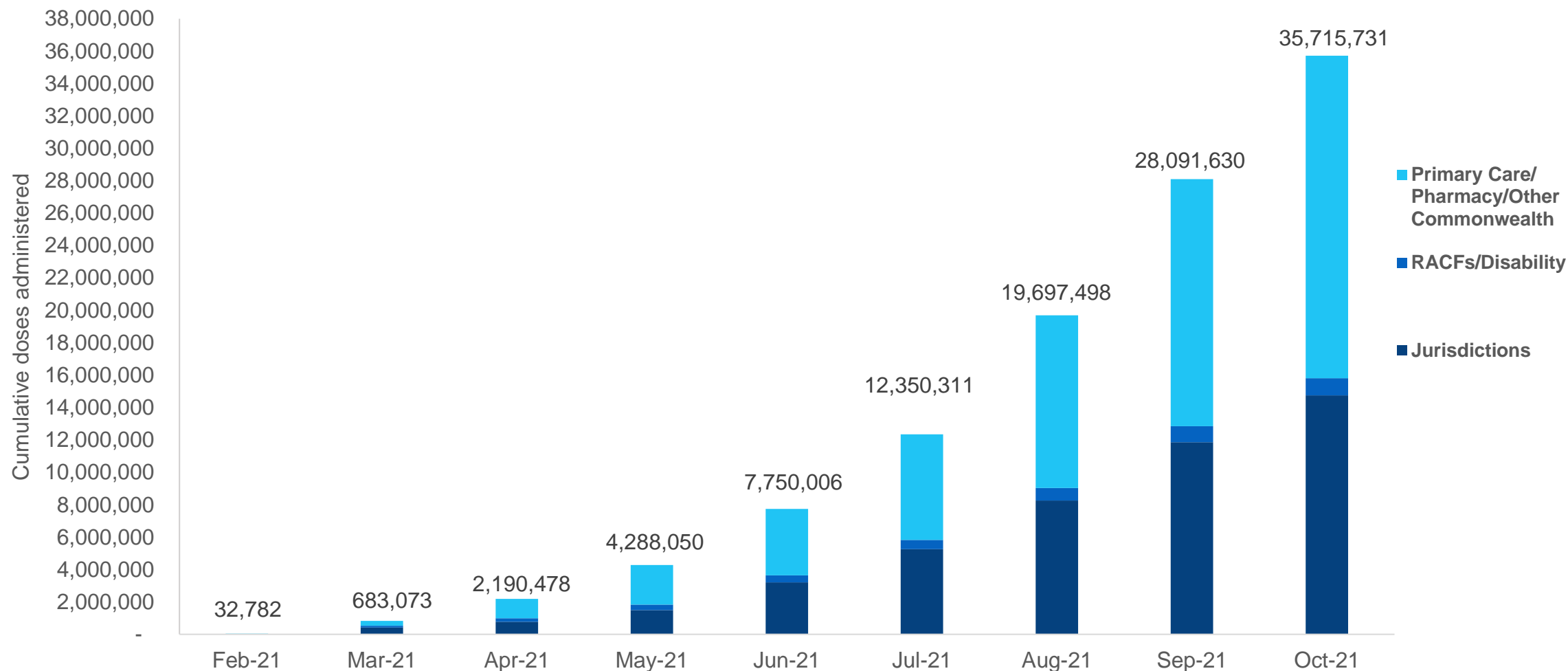
ACT
444,033
(+1,189 daily
increase)

NT
192,022
(+262 daily
increase)

*Sourced from the Australian Immunisation Register and self-reported data. Numbers are calculated as difference in daily cumulative reported numbers to allow for historical corrections in all self-reported data sources.

Cumulative doses administered by channel

Data as at:
31 Oct 2021



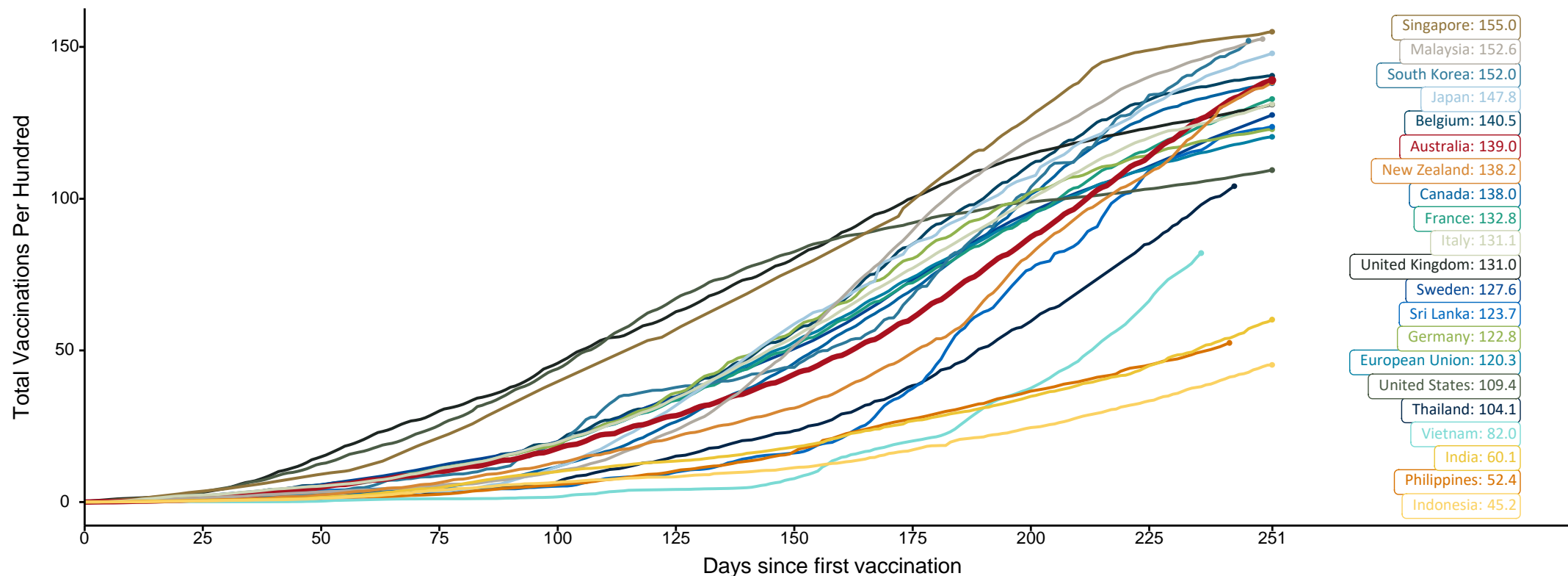
Source: Australian Immunisation Register

Doses at equivalent stages of rollout (Day 251)

Data as at:
31 Oct 2021

The x-axis is truncated at the length of Australia's vaccination program. Countries with intermittent reporting have had their doses per 100 imputed to Australia's current stage of rollout. Israel excluded as it is beyond scale of the graph.

Cumulative doses administered (31 Oct): **35,715,731**

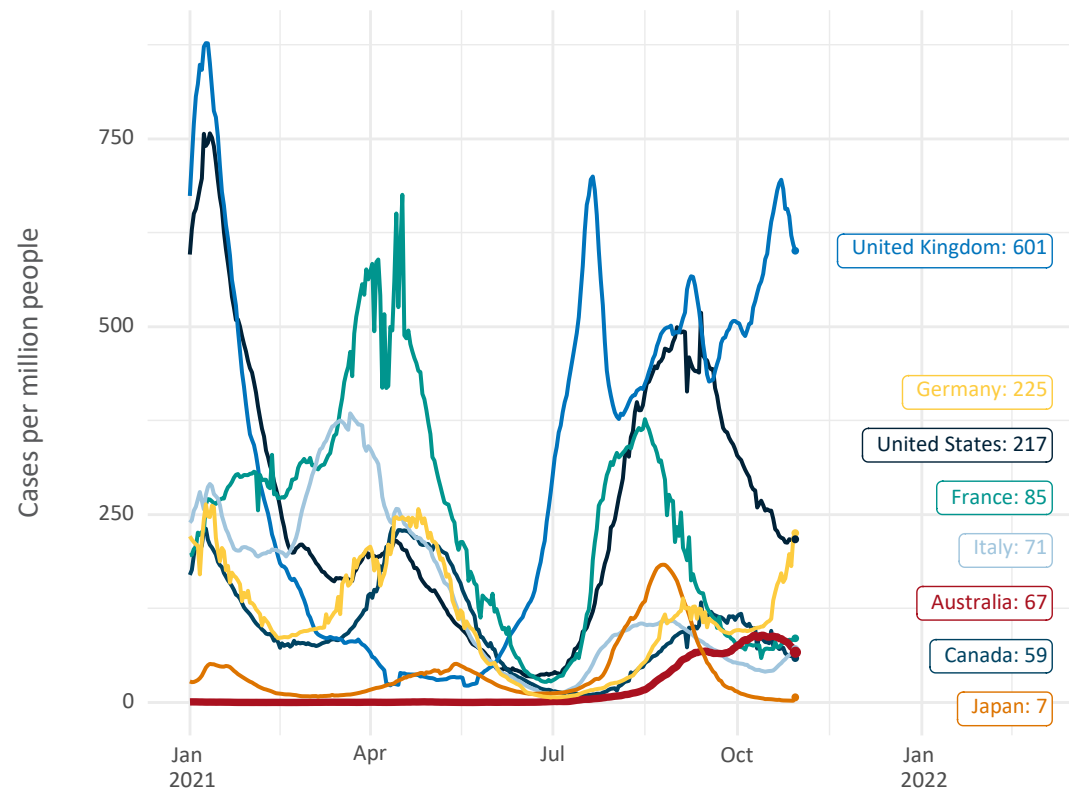


Note: From 15 September 2021, data for Australia includes all doses administered to people 12 and over. Prior to 15 September, data was for 16 and over
Source: Department of Health (Australia), Our World in Data (international)
Latest data: 31 October

International data – COVID-19

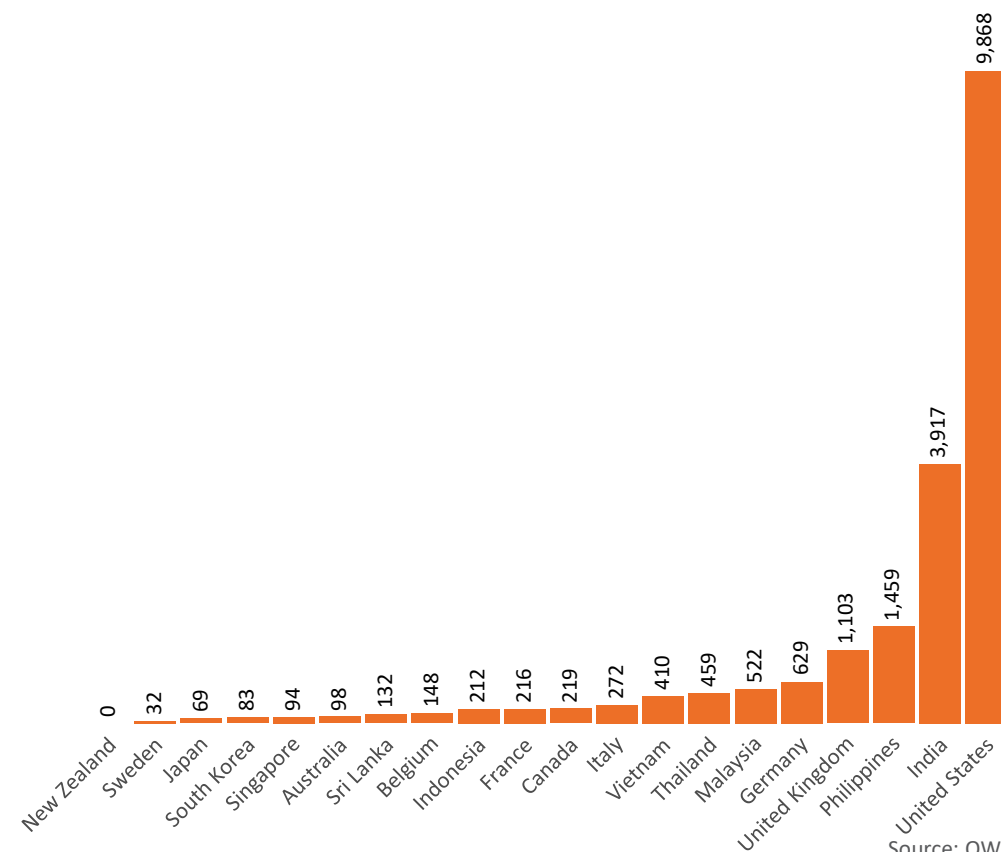
Data as at:
31 Oct 2021

New daily cases per million in 2021, Australia and G7 countries
Smoothed - 7 day average



Source: OWID
Data downloaded: 01 Nov 2021 08:44
Latest data: 30 Oct 2021

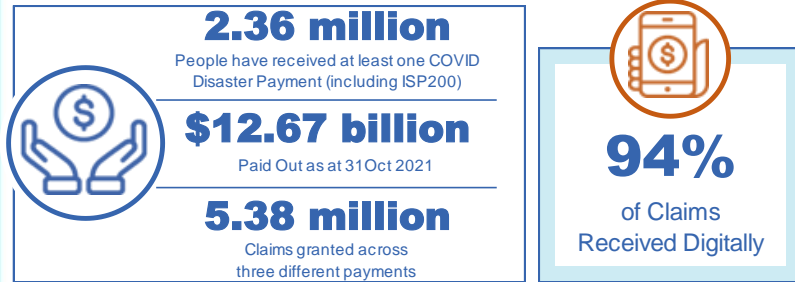
COVID-19 deaths in past 7 days - Australia and select countries



Source: OWID
Data downloaded: 01 Nov 2021 08:44
Latest data: 30 Oct 2021

Data as at midnight:
31 Oct 2021

Pandemic Response Payments (Current)



COVID Disaster Payment:	5.24 million claims received - 2.18 million individuals paid a total of \$12.25 billion.
\$200 Income Support Payment:	319,000 claims received - 181,000 individuals paid a total of \$263.09 million.
Pandemic Leave Disaster Payment:	114,000 claims received - 98,000 individuals paid a total of \$159.45 million.



COVID Disaster Payment

assisting during a lockdown event in a Commonwealth hotspot.

Income Support Payment \$200

for income support recipients who lost at least 8 hours of work.

Pandemic Leave Disaster Payment

for those who have to self-isolate, quarantine or care.

For more information visit:
servicesaustralia.gov.au

CURRENT COVID-19 DISASTER PAYMENTS

New South Wales

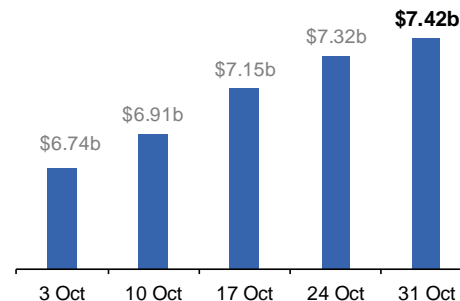
Active lockdown since 24 Jun
Partial reopening from 10 Oct

1.08m people have received at least one COVID Disaster Payment.

\$7.42b paid out as at 31 Oct 2021.

\$98m paid in initial and reoccurring payments in the week ending 31 Oct 2021.

Cumulative payments made by State since activation on 1 Jul 2021.



Victoria

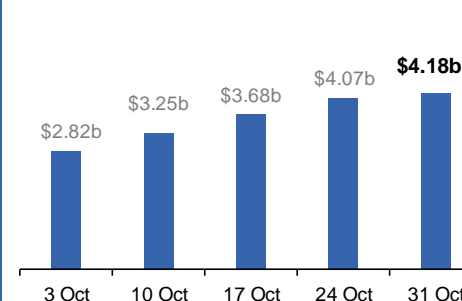
Active lockdown (#6) since 6 Aug

737,000 people have received at least one COVID Disaster Payment.

\$4.18b paid out as at 31 Oct 2021.

\$111m paid in initial and reoccurring payments in the week ending 31 Oct 2021.

Cumulative payments made by State since activation on 8 Jun 2021.



Australian Capital Territory

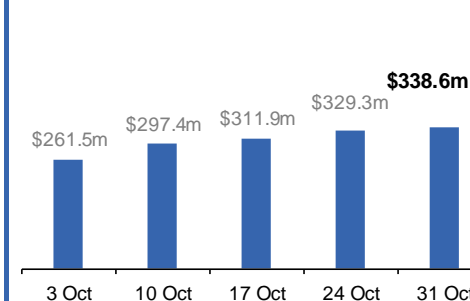
Active lockdown since 12 Aug
Partial reopening from 14 Oct

65,000 people have received at least one COVID Disaster Payment.

\$338.6m paid out as at 31 Oct 2021.

\$9.2m paid in initial and reoccurring payments in the week ending 31 Oct 2021.

Cumulative payments made by State since activation on 20 Aug 2021.



Tasmania

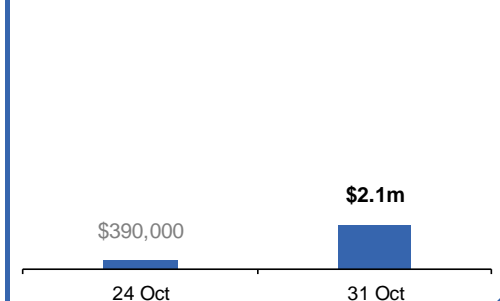
Lockdown from 15 Oct to 18 Oct
Claiming period ends 12 Nov

4,000 people have received at least one COVID Disaster Payment.

\$2.1m paid out as at 31 Oct 2021.

\$1.7m paid in initial payments in the week ending 31 Oct 2021.

Cumulative payments made by State since activation on 22 Oct 2021.



Pandemic Response Payments (Closed Events)

Data as at midnight:
31 Oct 2021

CLOSED COVID-19 DISASTER PAYMENTS


Northern Territory

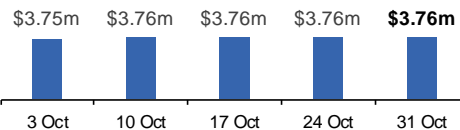
Lockdown from 18 – 20 Jul
Claiming period ended 13 Sep

5,804 people have received at least one COVID Disaster Payment.

\$3.76m paid out as at 31 Oct 2021.

There were no additional payments made in the week ending 31 Oct 2021.

 Cumulative payments made by State since activation on 25 Aug 2021.




Queensland

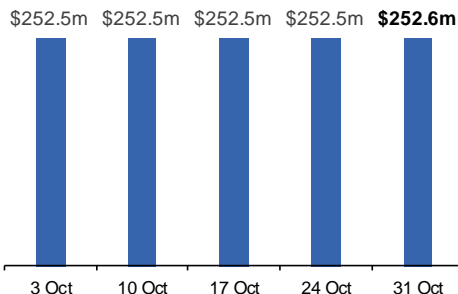
Lockdown from 31 Jul – 11 Aug
Claiming period ended 28 Aug

196,000 people have received at least one COVID Disaster Payment.

\$252.6m paid out as at 31 Oct 2021.

\$12,000 paid in initial and reoccurring payments in the week ending 31 Oct 2021.

 Cumulative payments made by State since activation on 7 Aug 2021.




South Australia

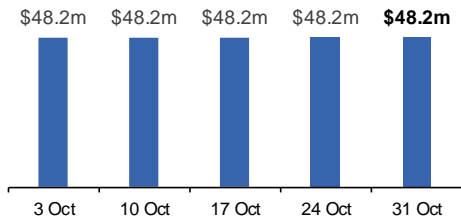
Lockdown from 21 – 27 Jul
Claiming period ended 17 Aug

86,000 people have received at least one COVID Disaster Payment.

\$48.2m paid out as at 31 Oct 2021.

There were no additional payments made in the week ending 31 Oct 2021.

 Cumulative payments made by State since activation on 28 Jul 2021.



Administration and Utilisation

Doses as at Week 36

	Ordered	Available	Administered	Available minus Administered	Estimated Dose Utilisation %
	Up to Week 36	Delivered up to Week 35 including redistributions	Up to Week 36		(see note)
NSW	4,761,410	4,761,410	4,104,392	657,018	96%
VIC	5,404,124	5,025,494	4,528,542	496,952	Fully utilised
QLD	3,294,220	3,139,160	2,541,861	597,299	91%
WA	1,683,538	1,630,408	1,491,493	138,915	Fully utilised
SA	1,423,740	1,262,410	1,034,744	227,666	92%
TAS	426,640	426,640	411,977	14,663	Fully utilised
NT	258,084	248,096	192,022	56,074	87%
ACT	478,526	453,716	444,033	9,683	Fully utilised
Jurisdiction delivered total	17,730,282	16,947,334	14,749,064	2,198,270	97%
Commonwealth Aged Care & Disability	1,072,930	1,072,818	1,054,465	18,353	N/A
Commonwealth Primary Care & Other	26,583,522	25,663,486	19,912,202	5,751,284	88%
Total	45,386,734	43,683,638	35,715,731	7,967,907	92%

About this data

- Ordered – Total doses delivered to sites. Based on logistics provider data. This figure includes doses allocated for administration in the coming week.
- Available – total doses that could have been administered to date, less doses re-distributed from States & Territories to Primary Care or Aged Care & Disability (i.e. does not include those deliveries recently received, and intended for use in the coming week).
- Administered – Doses administered as at 31 October 2021.
- The dose utilisation is calculated based on the total doses administered and a small % wastage in line with international standards in relation to total available doses.
- For Aged Care & Disability, the doses available for administration is for the full period (Weeks 1-36).
- Aged Care & Disability utilisation is not provided as the in-reach rollout is demand-based, with vaccines ordered based on resident numbers.