



**CURRENT STATUS OF CONFIRMED CASES**



**140**



ACT	NSW	NT	QLD	SA	TAS	VIC	WA
1	48	0	0	0	0	91	0

**835**



ACT	NSW	NT	QLD	SA	TAS	VIC	WA
1	264	4	10	0	0	556	0

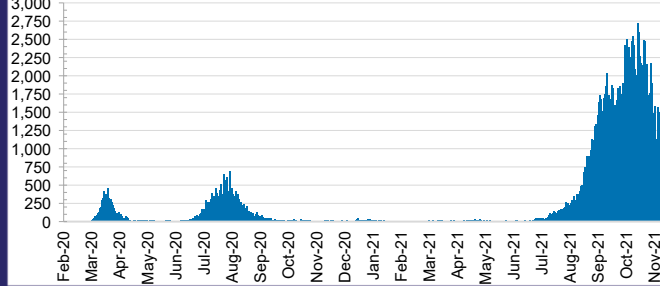
**44,582,410**



**0.4% POSITIVE**

ACT	NSW	NT	QLD
570,237	20,329,807	453,921	4,728,092
POSITIVE	POSITIVE	POSITIVE	POSITIVE
0.3%	0.4%	0.1%	0.0%
SA	TAS	VIC	WA
2,437,668	396,031	13,777,569	1,889,085
POSITIVE	POSITIVE	POSITIVE	POSITIVE
0.0%	0.1%	0.7%	0.1%

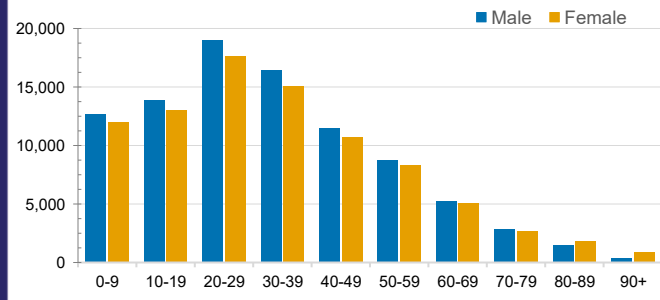
**DAILY NUMBER OF REPORTED CASES**



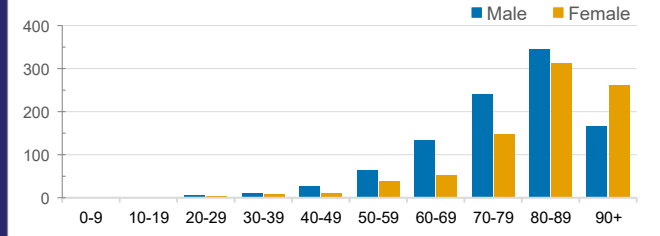
**CASES IN AGED CARE SERVICES**

Confirmed Cases	Australia	ACT	NSW	NT	QLD	SA	TAS	VIC	WA
Residential Care Recipients	3101 [1569] (832)	15 [8] (7)	484 [110] (95)	0	1 (1)	0	1 (1)	2600 [1451] (728)	0
In Home Care Recipients	118 [75] (10)	0	34 [15] (2)	0	8 [8]	1 [1]	5 [3] (2)	69 [48] (5)	1 (1)
Cases in care recipients [recovered] (deaths)									

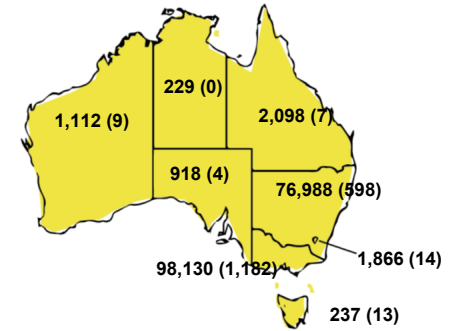
**CASES BY AGE GROUP AND SEX**



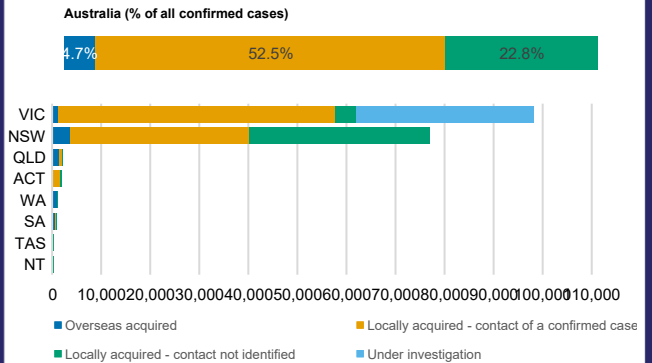
**DEATHS BY AGE GROUP AND SEX**



**CASES (DEATHS) BY STATE AND TERRITORIES**



**CASES BY SOURCE OF INFECTION**



**PUBLIC HEALTH RESPONSE MEASURE**

