



CURRENT STATUS OF CONFIRMED CASES



149



ACT	NSW	NT	QLD	SA	TAS	VIC	WA
1	52	0	0	0	0	96	0

851



ACT	NSW	NT	QLD	SA	TAS	VIC	WA
1	269	4	9	0	0	568	0

44,459,987

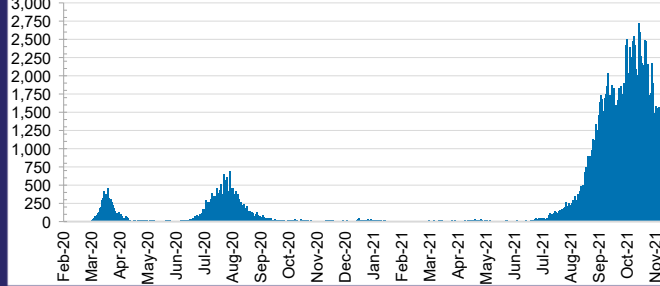


0.4% POSITIVE

**TOTAL TESTS
CONDUCTED**

ACT	NSW	NT	QLD
568,573	20,276,868	448,464	4,722,223
POSITIVE	POSITIVE	POSITIVE	POSITIVE
0.3%	0.4%	0.1%	0.0%
SA	TAS	VIC	WA
2,434,315	395,595	13,733,090	1,880,859
POSITIVE	POSITIVE	POSITIVE	POSITIVE
0.0%	0.1%	0.7%	0.1%

DAILY NUMBER OF REPORTED CASES

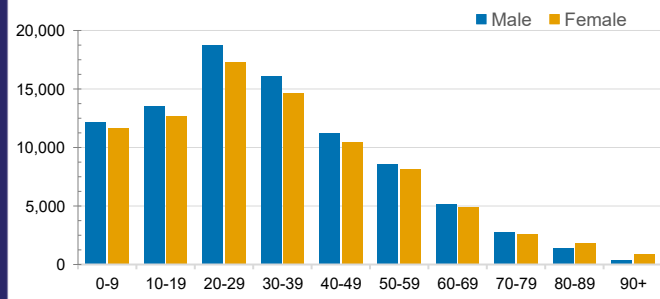


CASES IN AGED CARE SERVICES

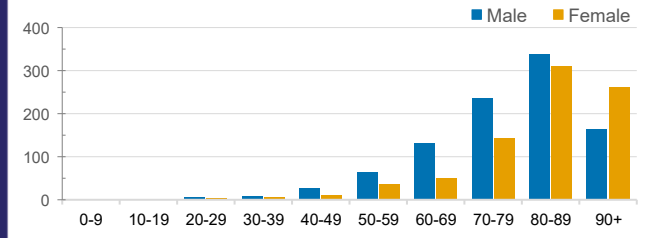
Confirmed Cases	Australia	ACT	NSW	NT	QLD	SA	TAS	VIC	WA
Residential Care Recipients	3060 [1550] (819)	15 [8] (7)	484 [110] (93)	0	1 (1)	0	1 (1)	2559 [1432] (717)	0
In Home Care Recipients	117 [75] (10)	0	34 [15] (2)	0	8 [8]	1 [1]	5 [3] (2)	68 [48] (5)	1 (1)

Cases in care recipients [recovered] (deaths)

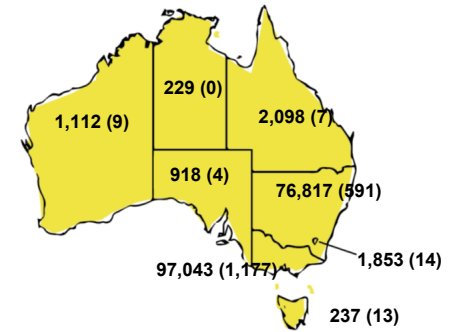
CASES BY AGE GROUP AND SEX



DEATHS BY AGE GROUP AND SEX

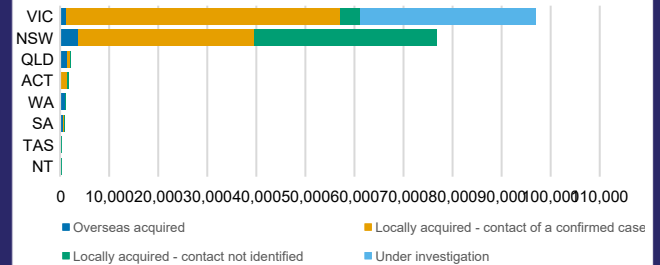


CASES (DEATHS) BY STATE AND TERRITORIES



CASES BY SOURCE OF INFECTION

Australia (% of all confirmed cases)



PUBLIC HEALTH RESPONSE MEASURE

Proportion of total cases under investigation

