



**CURRENT STATUS OF CONFIRMED CASES**



**171**

CURRENT CASES  
INTENSIVE CARE UNITS (ICU)

ACT	NSW	NT	QLD	SA	TAS	VIC	WA
1	61	0	0	0	0	109	0

**931**

CURRENT CASES  
ADMITTED TO HOSPITALS

ACT	NSW	NT	QLD	SA	TAS	VIC	WA
3	285	2	7	0	0	634	0

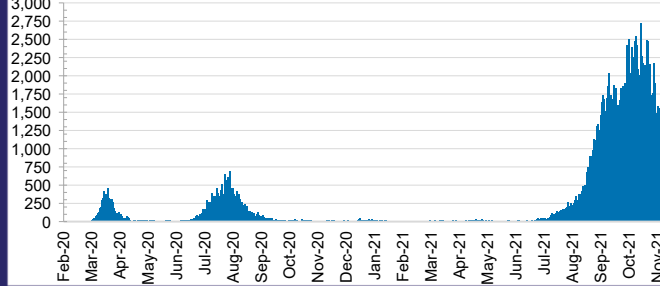
**44,167,105**

**0.4%** POSITIVE

TOTAL TESTS  
CONDUCTED

ACT	NSW	NT	QLD
566,220	20,134,242	444,719	4,708,548
POSITIVE	POSITIVE	POSITIVE	POSITIVE
0.3%	0.4%	0.1%	0.0%
SA	TAS	VIC	WA
2,426,899	394,587	13,611,031	1,880,859
POSITIVE	POSITIVE	POSITIVE	POSITIVE
0.0%	0.1%	0.7%	0.1%

**DAILY NUMBER OF REPORTED CASES**

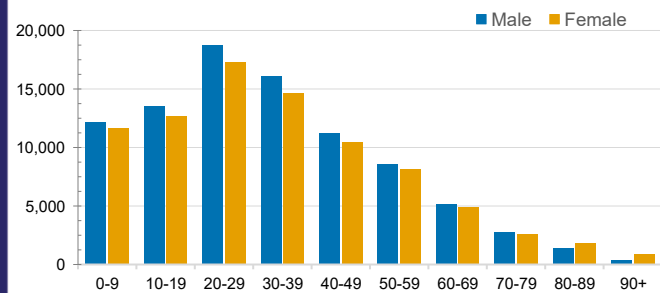


**CASES IN AGED CARE SERVICES**

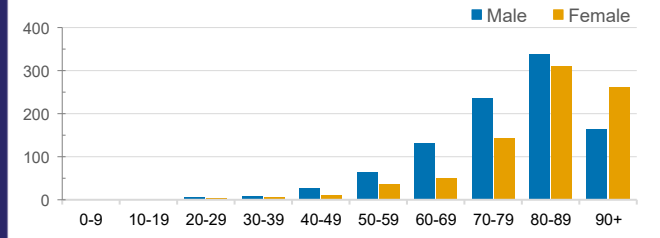
Confirmed Cases	Australia	ACT	NSW	NT	QLD	SA	TAS	VIC	WA
Residential Care Recipients	3060 [1550] (819)	15 [8] (7)	484 [110] (93)	0	1 (1)	0	1 (1)	2559 [1432] (717)	0
In Home Care Recipients	117 [75] (10)	0	34 [15] (2)	0	8 [8]	1 [1]	5 [3] (2)	68 [48] (5)	1 (1)

Cases in care recipients [recovered] (deaths)

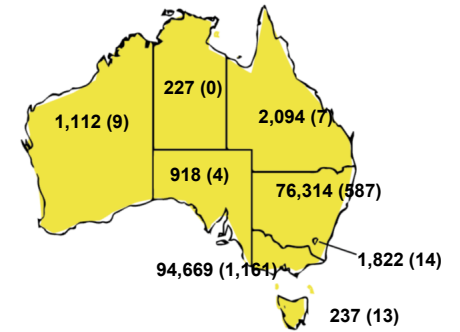
**CASES BY AGE GROUP AND SEX**



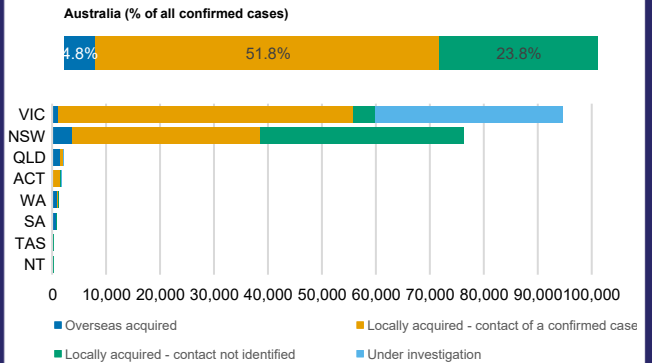
**DEATHS BY AGE GROUP AND SEX**



**CASES (DEATHS) BY STATE AND TERRITORIES**



**CASES BY SOURCE OF INFECTION**



**PUBLIC HEALTH RESPONSE MEASURE**

