



CURRENT STATUS OF CONFIRMED CASES



180



ACT	NSW	NT	QLD	SA	TAS	VIC	WA
2	64	0	0	0	0	114	0

978



ACT	NSW	NT	QLD	SA	TAS	VIC	WA
6	302	1	9	0	0	660	0

43,996,749

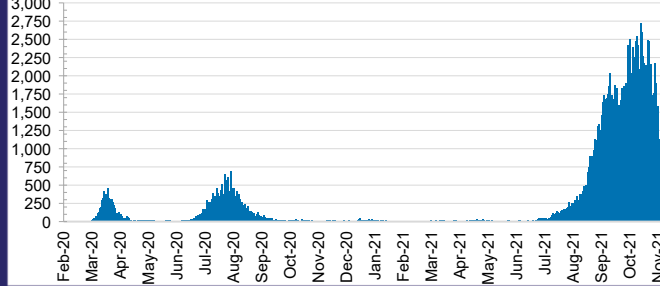


0.4% POSITIVE

TOTAL TESTS CONDUCTED

ACT	NSW	NT	QLD
564,321	20,053,661	443,062	4,696,721
POSITIVE	POSITIVE	POSITIVE	POSITIVE
0.3%	0.4%	0.1%	0.0%
SA	TAS	VIC	WA
2,422,164	393,814	13,544,876	1,878,130
POSITIVE	POSITIVE	POSITIVE	POSITIVE
0.0%	0.1%	0.7%	0.1%

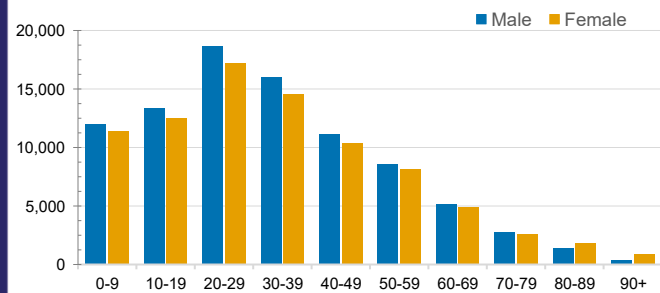
DAILY NUMBER OF REPORTED CASES



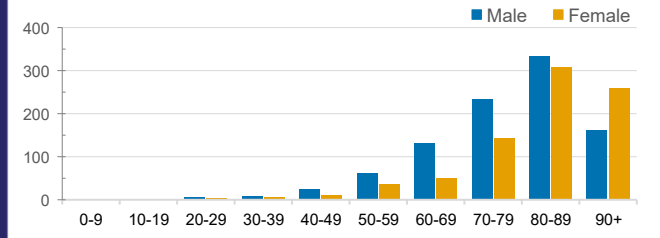
CASES IN AGED CARE SERVICES

Confirmed Cases	Australia	ACT	NSW	NT	QLD	SA	TAS	VIC	WA
Residential Care Recipients	3046 [1548] (815)	15 [8] (7)	484 [110] (91)	0	1 (1)	0	1 (1)	2545 [1430] (715)	0
In Home Care Recipients	117 [75] (10)	0	34 [15] (2)	0	8 [8]	1 [1]	5 [3] (2)	68 [48] (5)	1 (1)
Cases in care recipients [recovered] (deaths)									

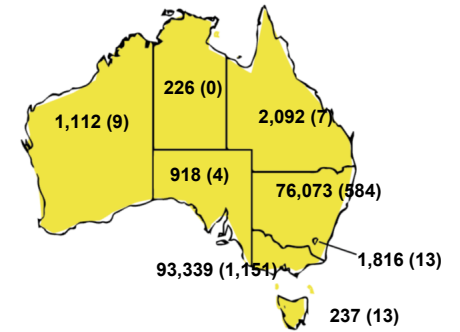
CASES BY AGE GROUP AND SEX



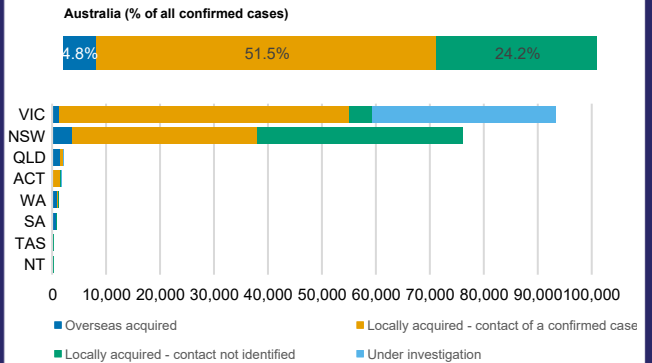
DEATHS BY AGE GROUP AND SEX



CASES (DEATHS) BY STATE AND TERRITORIES



CASES BY SOURCE OF INFECTION



PUBLIC HEALTH RESPONSE MEASURE

