



**CURRENT STATUS OF CONFIRMED CASES**



**187**



ACT	NSW	NT	QLD	SA	TAS	VIC	WA
2	68	0	0	0	0	117	0

**983**



ACT	NSW	NT	QLD	SA	TAS	VIC	WA
5	309	0	12	0	0	657	0

**43,836,283**

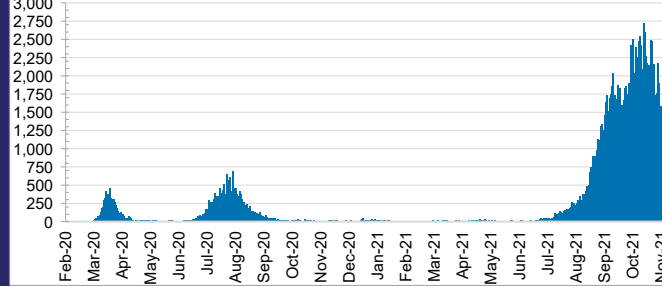


**0.4% POSITIVE**

**TOTAL TESTS  
CONDUCTED**

ACT	NSW	NT	QLD
561,893	19,959,000	441,761	4,691,512
POSITIVE	POSITIVE	POSITIVE	POSITIVE
0.3%	0.4%	0.1%	0.0%
SA	TAS	VIC	WA
2,418,446	393,198	13,494,696	1,875,777
POSITIVE	POSITIVE	POSITIVE	POSITIVE
0.0%	0.1%	0.7%	0.1%

**DAILY NUMBER OF REPORTED CASES**

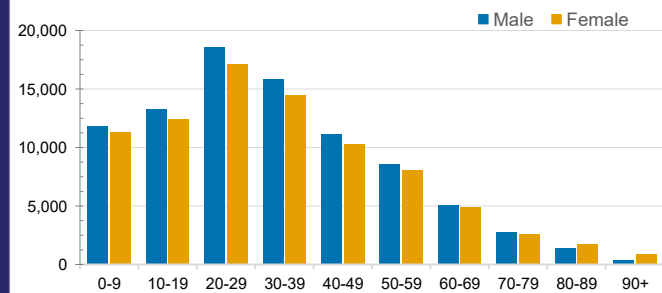


**CASES IN AGED CARE SERVICES**

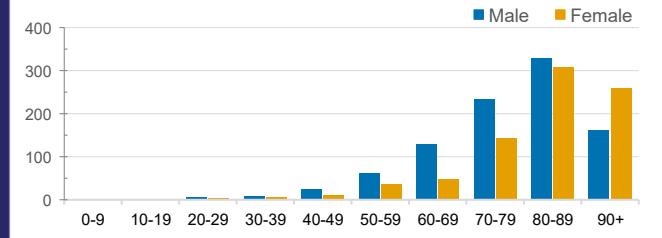
Confirmed Cases	Australia	ACT	NSW	NT	QLD	SA	TAS	VIC	WA
Residential Care Recipients	3022 [1530] (812)	15 [8] (7)	483 [100] (90)	0	1 (1)	0	1 (1)	2522 [1422] (713)	0
In Home Care Recipients	117 [75] (10)	0	34 [15] (2)	0	8 [8]	1 [1]	5 [3] (2)	68 [48] (5)	1 (1)

Cases in care recipients [recovered] (deaths)

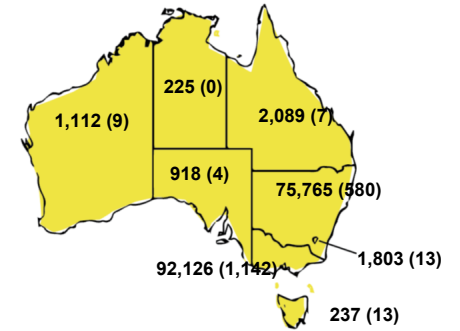
**CASES BY AGE GROUP AND SEX**



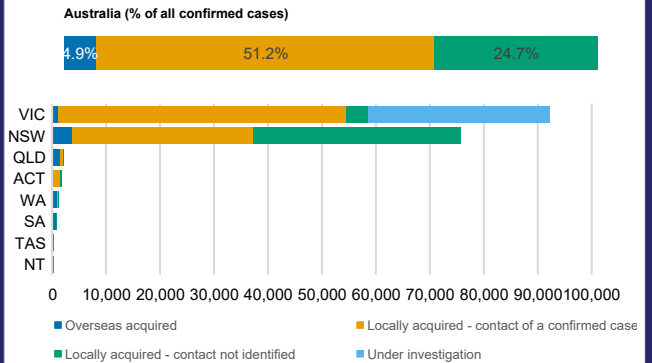
**DEATHS BY AGE GROUP AND SEX**



**CASES (DEATHS) BY STATE AND TERRITORIES**



**CASES BY SOURCE OF INFECTION**



**PUBLIC HEALTH RESPONSE MEASURE**

