



CURRENT STATUS OF CONFIRMED CASES



75



ACT	NSW	NT	QLD	SA	TAS	VIC	WA
5	25	0	0	0	0	45	0

542



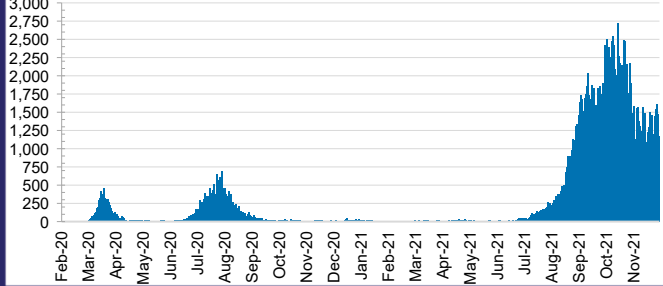
ACT	NSW	NT	QLD	SA	TAS	VIC	WA
7	170	58	7	0	0	300	0

47,767,406



ACT	NSW	NT	QLD
634,449	21,729,315	508,339	4,906,027
POSITIVE	POSITIVE	POSITIVE	POSITIVE
0.3%	0.4%	0.1%	0.0%
SA	TAS	VIC	WA
2,551,100	410,496	15,080,046	1,947,634
POSITIVE	POSITIVE	POSITIVE	POSITIVE
0.0%	0.1%	0.8%	0.1%

DAILY NUMBER OF REPORTED CASES

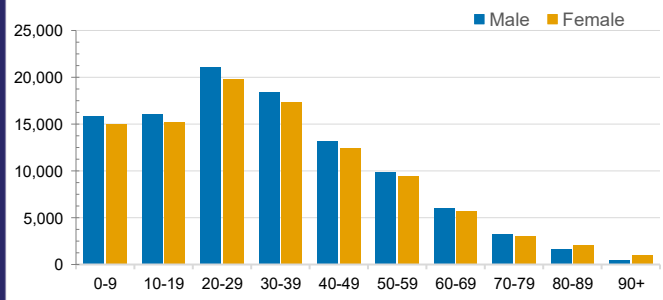


CASES IN AGED CARE SERVICES

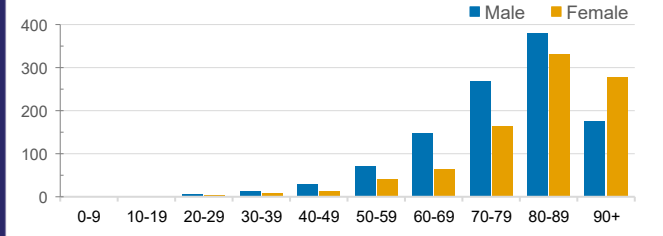
Confirmed Cases	Australia	ACT	NSW	NT	QLD	SA	TAS	VIC	WA
Residential Care Recipients	3397 [1757] (872)	19 [8] (7)	497 [122] (99)	0	1 (1)	0	1 (1)	2879 [1627] (764)	0
In Home Care Recipients	122 [76] (10)	0	34 [15] (2)	0	8 [8]	1 [1]	5 [3] (2)	73 [49] (5)	1 (1)

Cases in care recipients [recovered] (deaths)

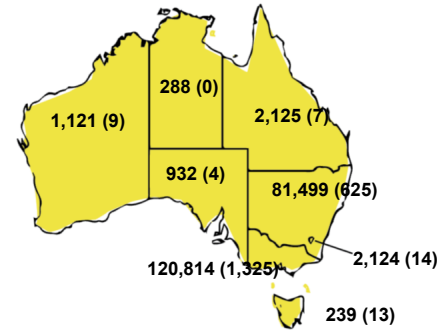
CASES BY AGE GROUP AND SEX



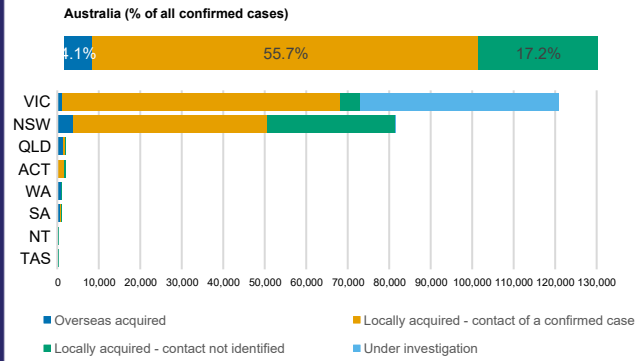
DEATHS BY AGE GROUP AND SEX



CASES (DEATHS) BY STATE AND TERRITORIES



CASES BY SOURCE OF INFECTION



PUBLIC HEALTH RESPONSE MEASURE

