



CURRENT STATUS OF CONFIRMED CASES



73



| ACT | NSW | NT | QLD | SA | TAS | VIC | WA |
|-----|-----|----|-----|----|-----|-----|----|
| 5 | 24 | 0 | 0 | 0 | 0 | 44 | 0 |

512



| ACT | NSW | NT | QLD | SA | TAS | VIC | WA |
|-----|-----|----|-----|----|-----|-----|----|
| 7 | 165 | 53 | 4 | 0 | 0 | 283 | 0 |

47,643,647

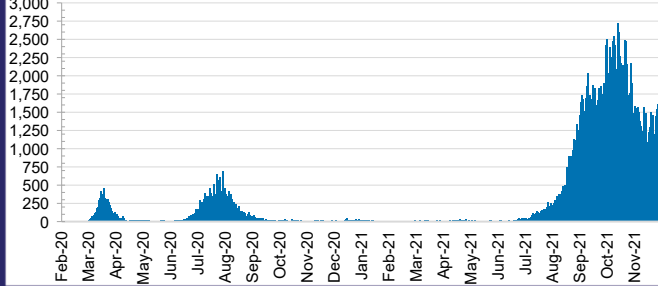


0.4% POSITIVE

**TOTAL TESTS
CONDUCTED**

| ACT | NSW | NT | QLD |
|-----------|------------|------------|-----------|
| 630,867 | 21,682,140 | 505,897 | 4,899,035 |
| POSITIVE | POSITIVE | POSITIVE | POSITIVE |
| 0.3% | 0.4% | 0.1% | 0.0% |
| SA | TAS | VIC | WA |
| 2,543,746 | 409,866 | 15,031,649 | 1,940,447 |
| POSITIVE | POSITIVE | POSITIVE | POSITIVE |
| 0.0% | 0.1% | 0.8% | 0.1% |

DAILY NUMBER OF REPORTED CASES

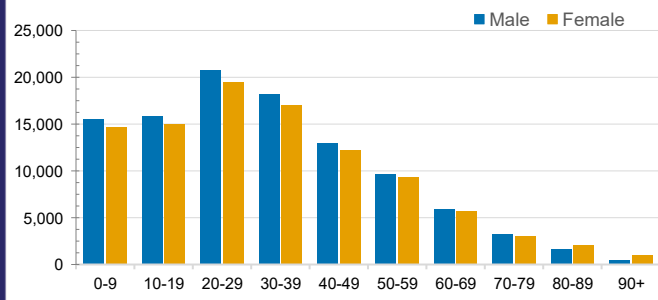


CASES IN AGED CARE SERVICES

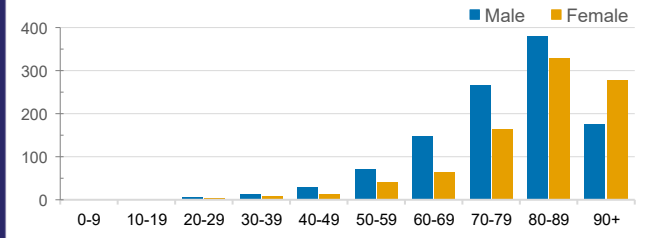
| Confirmed Cases | Australia | ACT | NSW | NT | QLD | SA | TAS | VIC | WA |
|-----------------------------|-------------------|------------|----------------|----|-------|-------|-----------|-------------------|-------|
| Residential Care Recipients | 3387 [1755] (867) | 19 [8] (7) | 495 [122] (99) | 0 | 1 (1) | 0 | 1 (1) | 2871 [1625] (759) | 0 |
| In Home Care Recipients | 122 [76] (10) | 0 | 34 [15] (2) | 0 | 8 [8] | 1 [1] | 5 [3] (2) | 73 [49] (5) | 1 (1) |

Cases in care recipients [recovered] (deaths)

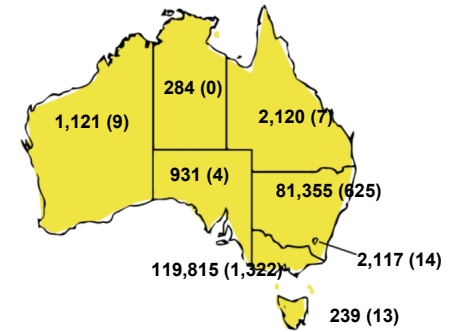
CASES BY AGE GROUP AND SEX



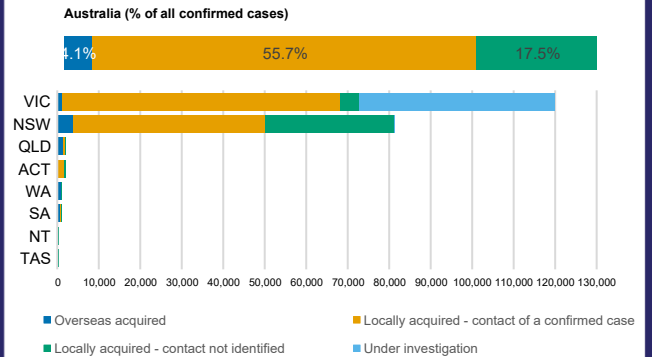
DEATHS BY AGE GROUP AND SEX



CASES (DEATHS) BY STATE AND TERRITORIES



CASES BY SOURCE OF INFECTION



PUBLIC HEALTH RESPONSE MEASURE

